

Sandpiper SELECT



TRAVEL TRAILERS AND FIFTH WHEELS

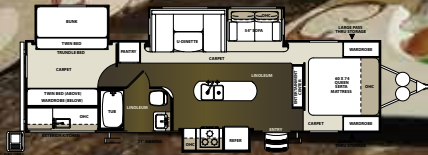


travel anywhere



31ZIP

TRAVEL ANYWHERE



SELECT LIVING.

31ZIP SADDLE INTERIOR



3010K

TRAVEL ANYWHERE



SELECT STYLE.

3010K SADDLE INTERIOR

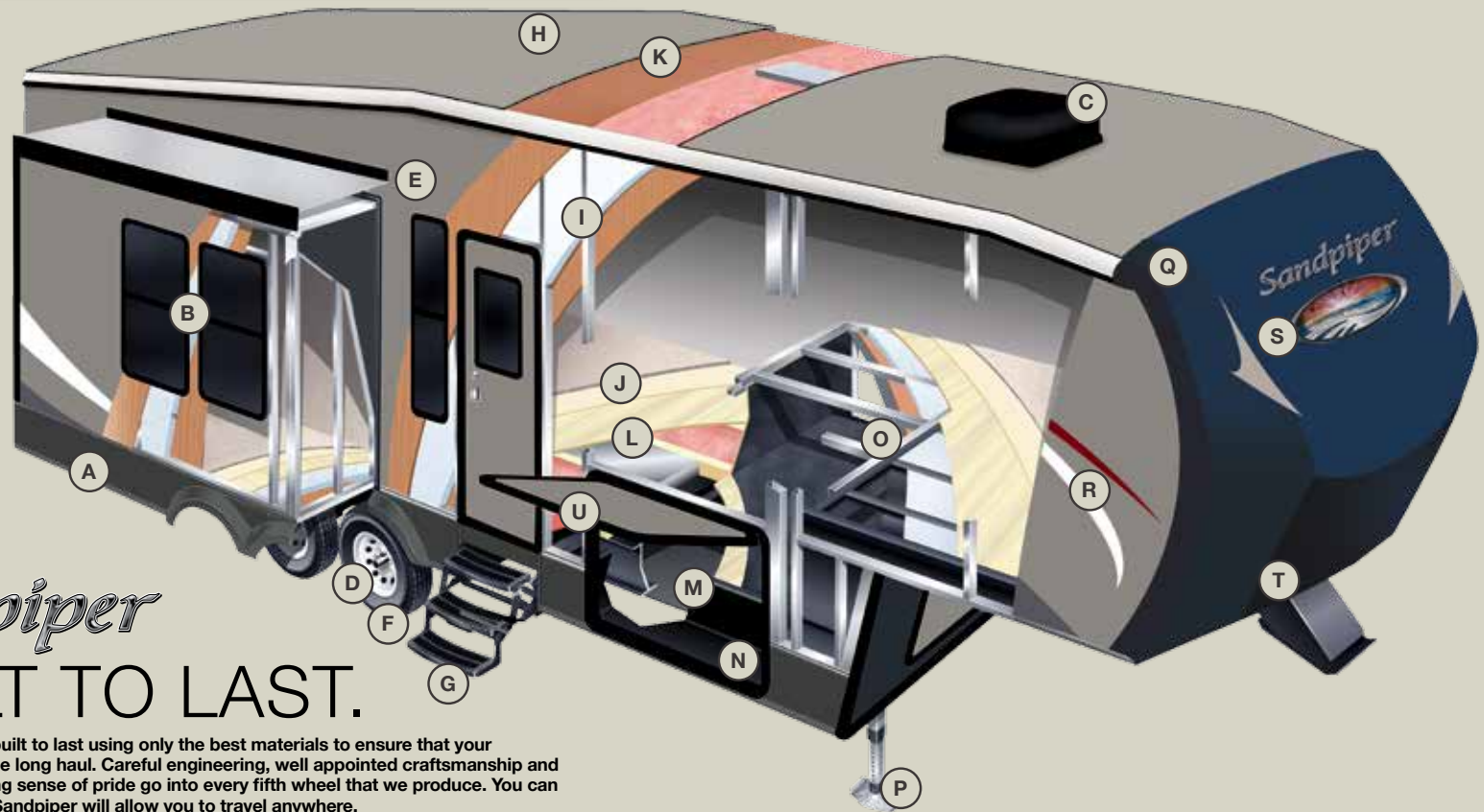


Exterior kitchen



Large walk in pantry

SANDPIPER CONSTRUCTION



Sandpiper

BUILT TO LAST.

The Sandpiper is built to last using only the best materials to ensure that your coach is in it for the long haul. Careful engineering, well appointed craftsmanship and an uncompromising sense of pride go into every fifth wheel that we produce. You can rest assured that Sandpiper will allow you to travel anywhere.

- | | | |
|---|---|--|
| A. ROLLED ALUMINUM SIDED SKIRTING | H. COLOR MATCHED SEAMLESS RUBBER ROOF (12-YR. WARRANTY) | O. ALUMINUM LAMINATED & INSULATED BATH DECK |
| B. TINTED SAFETY GLASS WINDOWS (80%) | I. BLOCK FOAM INSULATION | P. POWER FRONT JACKS WITH QUICK RELEASE SNAP PINS (HYDRAULIC OPTIONAL) |
| C. DUAL ZONE DUCTED 15K BTU AIR CONDITIONING | J. SHAW R2X STAIN RESISTANT CARPET WITH PADDING | Q. SLEEK RADIUS ROOF |
| D. DEXTER AXLES WITH AUTO ADJUST BRAKES | K. 3/8" ROOF DECKING (FULL WALK-ON ROOF) | R. PAINTED COLOR MATCHED HIGH GLOSS GEL-COATED FIBERGLASS EXTERIOR |
| E. LAMINATED VACUUM BONDED ALUMINUM SIDEWALLS | L. 5/8" TONGUE AND GROOVE PLYWOOD FLOORING | S. FRONT GEL-COAT FIBERGLASS CAP (STANDARD) |
| F. E-RATED RADIAL TIRES | M. ENCLOSED HEATED UNDERBELLY | T. IMPROVED FRONT CAP FOR SHARPER TURNING RADIUS |
| G. HICKORY SPRINGS RADIUS ENTRY STEPS | N. I-BEAM POWDER-COATED FRAME W/ RUST INHIBITOR | U. INSULATED SLAM LOCK BAGGAGE DOORS |

EXTERIOR KITCHEN

DSI

20th Annual RVDA DEALER
SATISFACTION INDEX
AWARD WINNER



ALUMA-STRUCTURE
VACUUM BONDED

The Sandpiper has a Welded Aluminum Superstructure that is regarded as the Industry's finest, pictured left is the heavier gauge aluminum tubing used by Sandpiper vs. The Competitions lighter gauge aluminum.



Sandpiper's unique exterior kitchen brings the joys of camp cooking to the outdoors where it truly belongs. Sandpiper's exterior kitchen offers a very modern look with its use of L.E.D. lights and rich water resistant cabinetry to store everything needed to prepare the perfect meal while still enjoying the wonders of nature. Rain or shine Sandpiper's outdoor kitchen turns ordinary cooking into extraordinary fun.

SANDPIPER FEATURES



110v outlet and cable outlet conveniently located in the pass-thru storage area.



Sandpiper's convenient lighted outside docking station.



Heated and enclosed underbelly protects your coach and improved airflow allows for a sturdier ride.



Sandpiper's command center allows you to monitor tanks and other systems quickly and easily.



Optional hydraulic wide stance power front jacks.



Contemporary aluminum rims with E-rated radial tires.



Optional under mount exterior storage bin keeps commonly used items close at hand.



Insulated heavy duty Slam Lock baggage doors.



Gel coat fiberglass protects from UV rays and prevents yellowing and cracking.



Drip rail with extra long drip spouts that help prevent black streaking.



The quick connect spray port is great for easy clean up.



Control the A/C temperature in the bedroom and living area with the dual zone Dometic® thermostat.

STANDARDS / OPTIONS

EXTERIOR FEATURES

- Painted Aerodynamic fiberglass front cap with LED light strips (fifth wheels)
- Colored exterior fiberglass
- Enclosed and heated dump valves
- Docking station: easy winterization, hot and cold spray port, black Tank flush, pull valves for tanks
- Large tinted windows with 80/20 UV prohibitor
- Dexter axles with self adjusting brakes
- Hickory Springs™ radius triple steps with 9" riser (no pinched fingers)
- Dometic™ "One-Touch" electric awning with adjustable arms and LED strip light
- Power front jacks with spring loaded snap pins (fifth wheels)
- 15" Radial tires (TT), 16" (FW)
- Automotive-style fender skirts
- Hitch light -travel trailers
- Porch light with interior switch
- 30 lb. double LP tanks with auto change over
- Black tank flush
- 2 exterior speakers
- Rain gutters with extra long drip spouts (prevents black streaking)
- Insulated heavy duty slam lock baggage doors
- Exterior foldable grab handle
- Unobstructed pass-through storage area with cable jacks and 110V outlet (fifth wheels)

- 2 spray ports with 25' hose (one on each side)
- Outside kitchen with swing arm grill standard on 30IOK, 31ZIP

INTERIOR FEATURES

- 84" interior height with 6'4" slide heights (fifth wheels)
- Solid surface kitchen countertops
- Four color coordinated interiors
- Raised panel refrigerator insert
- Full extension ball bearing drawer glides
- Serta® memory foam mattress
- Stone cast under mounted kitchen sink
- Handmade cabinetry with screwed lumber core stile construction
- Designer slideout fascia
- Extra large picture windows throughout
- Vented side windows in slideouts
- Digital TV antenna with booster
- 32" Flatscreen LED/HD TV
- Premium sound TV hook-up
- Solid wood drawer fronts with pine sides
- Raised panel cabinet doors
- Bedroom slideout fascia
- Shower with glass door (where available)
- Designer window treatment accented per decor
- Overhead cabinet in slideout
- Ceiling fan (fifth wheels)
- Upgraded decorative lighting

- throughout (recessed LED's fifth wheels)
- Shaw R2x stain resistant carpeting
- Center mounted A/C unit for even cooling
- Quilted bedspread
- Shower surround with etched tile pattern
- Tile pattern Beauflor™ linoleum

APPLIANCES/SYSTEMS

- Ducted Dometic® 15K A/C with quick cool
- Sandpiper command center for switches
- Floor ducted 35,000 BTU furnace
- Three burner High output range with 22" oven
- Double door refrigerator
- Interior monitor panel for holding tanks
- Interior digital thermostat for heating and cooling
- Flush floor slideouts (per floorplan)
- Satellite and cable hookup with RG-6 cable for high quality picture
- Porcelain foot flush toilets
- Water heater with quick recovery

CONSTRUCTION

- Welded aluminum-framed, vacuum bonded laminated superstructure
- 3/8" roof decking (full walk-on roof)
- Cambered powder coated frame with rust prohibitor
- Fully enclosed heated underbelly

- 5" truss roof rafters
- R-10 sidewall insulation

FOR YOUR SAFETY

- Smoke alarm
- Fire extinguisher
- Breakaway switch (battery hook-up required)
- Dead-bolt lock on entry door
- Liquid propane (LP) gas detector
- Fire escape windows

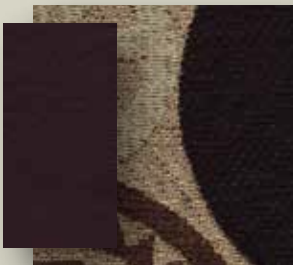
POPULAR OPTIONS

- Free-standing dinette with 4 chairs
- Roof ladder
- 50 Amp service (travel trailers)
- Spare tire kit
- Plank wood pattern Beauflor™ linoleum
- Exterior storage bin (FW)
- Hydraulic landing gear (FW)

SANDPIPER SELECT Signature Package (Mandatory option)

- 50 Amp service with 2nd AC prep (fifth wheels)
- Serta memory foam mattress
- 15K BTU air conditioner
- Porcelain foot flush toilet
- Safety glass windows - 80% tint
- Docking station with bypass (fifth wheels)
- High rise faucet
- High gloss fiberglass exterior
- Designer window shades
- Surround sound system
- "One Touch" Dometic electric awning with LED lights
- 8 cu. ft. refer with oak insert
- Full walk on roof
- 32" flat screen television
- Undermount sink
- Jensen am/fm cd/dvd player with bluetooth
- Aerodynamic front cap (fifth wheels)
- Fantastic fan in bathroom
- Designer tile Beauflor™
- Tri-fold hide-a-bed sofa
- Aluminum wheels

Sandpiper



SADDLE INTERIOR



STORM INTERIOR



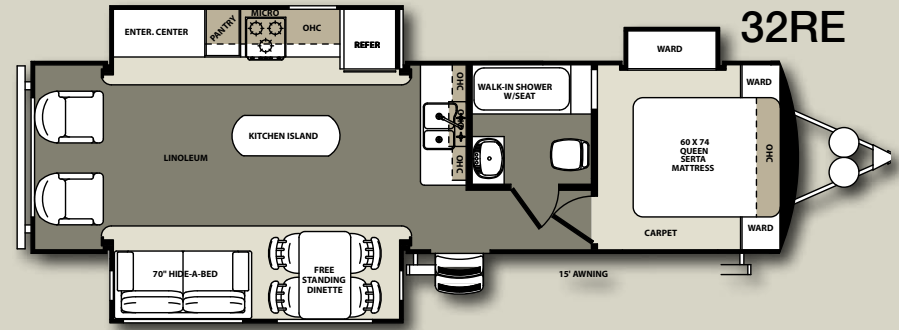
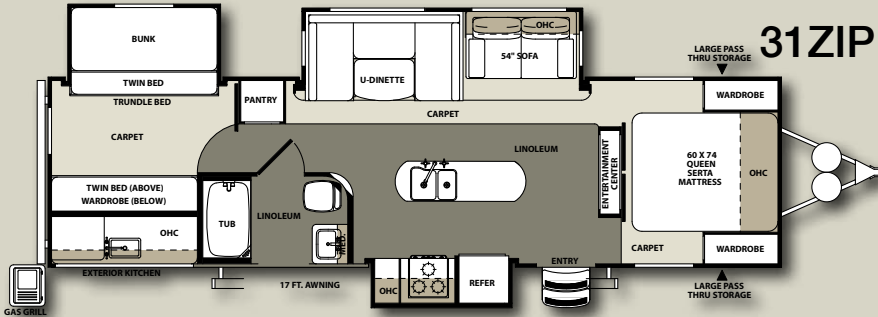
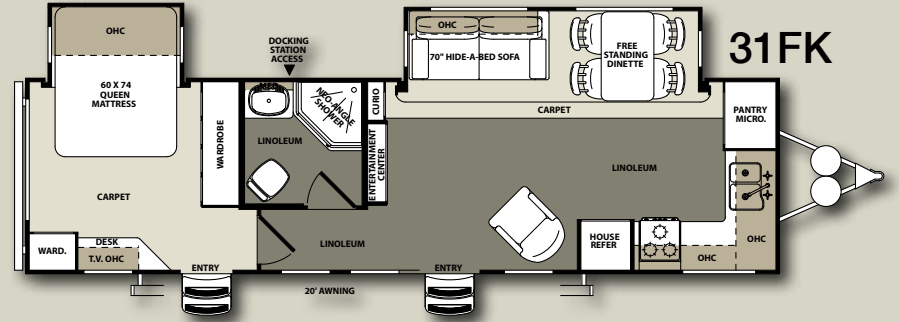
KAHLUA INTERIOR



DESIGNER INTERIOR

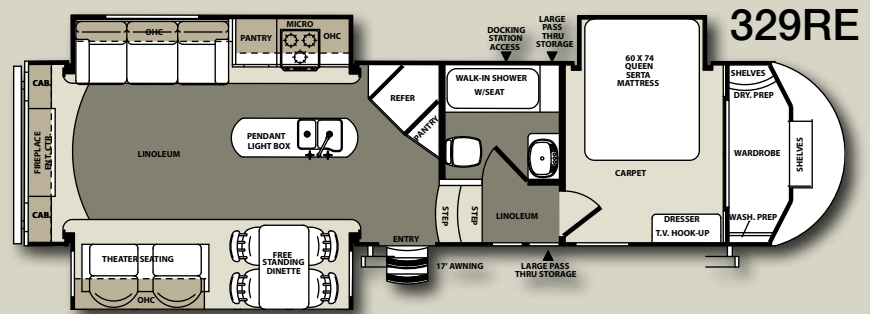
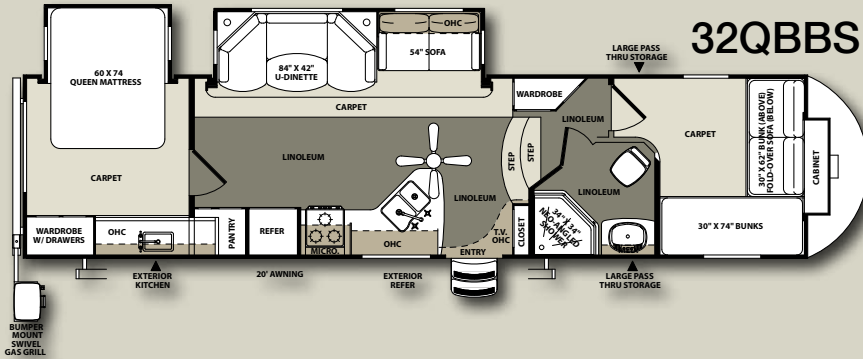
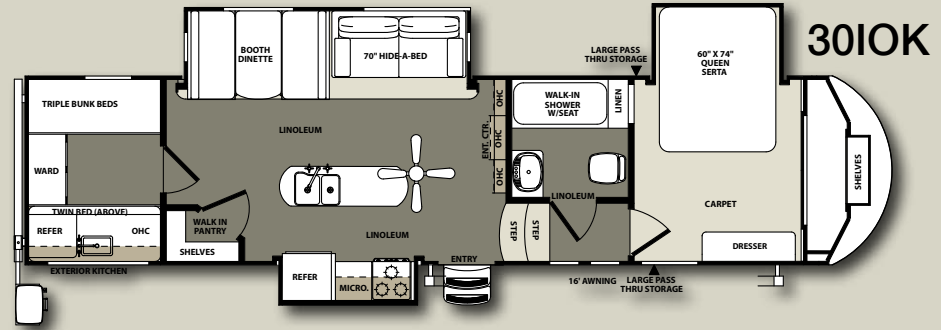
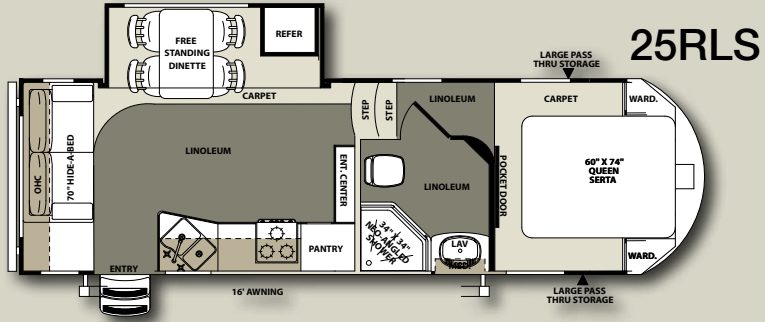
FLOORPLANS

Sandpiper



TRAVEL TRAILER SPECIFICATIONS

Model	31FK	31ZIP	32RE
Hitch Weight	1,213	871	1,055
Ship Weight	7,745	8,887	9,100
GVWR	11,373	12,871	11,215
Cargo	3,628	3,984	2,056
Length	34'6"	34'5"	35'10"
Height	11'9"	11'9"	11'9"
Awning Size	20'	21'	15'
Gray Tank (cap)	62	86	108
Black Tank (cap)	31	54	54
Fresh Tank (cap)	43	60	43



FIFTH WHEEL SPECIFICATIONS

Model	25RLS	30IOK	32QBSS	329RE
Hitch Weight	1,472	1,930	1,896	1,899
Ship Weight	7,526	10,472	9,000	9,996
GVWR	13,472	13,930	13,896	13,899
Cargo	5,946	3,503	4,896	3,844
Length	29'0"	37'11"	36'11"	36'3"
Height	12'6"	12'6"	13'0"	13'0"
Awning Size	18'	16'	20'	17'
Gray Tank (cap)	32	81	62	89
Black Tank (cap)	32	54	31	54
Fresh Tank (cap)	43	43	43	43



Sandpiper SELECT



PRE-DELIVERY INSPECTION FACILITY

20,000 square feet of quality assurance. The bare essentials for a premium product. This state-of-the-art facility gives immediate daily feedback to production for quality assurance in every unit built.

24/7 EMERGENCY ROADSIDE ASSISTANCE

For a worry-free ownership experience Forest River includes one year of Coach-Net RV Technical & Roadside Assistance with each RV purchase. Whether new to the RV lifestyle or an experienced RV enthusiast, Forest River owners have 24/7 access to technical, operational and emergency road service coverage throughout the US & Canada. Coach-Net's fast, dependable service is just a phone call away.

Coach-Net®

RV Technical & Roadside Assistance



Forest River, Inc. encourages our customers to purchase their Forest River products from a local dealership whenever possible for the following reasons:

- 1) Forest River, Inc. dealers are independently owned and operated businesses so priority service and scheduling is at their discretion and is often provided to customers that purchased their unit at that dealership.
- 2) Purchasing locally allows customers to establish meaningful relationships with a dealer, enhancing the RV experience through assistance with product questions, user tips or RV regulations for your state or country, and much more!
- 3) Canadian customers must meet requirements to bring an RV purchased out of the country to their home. These requirements may involve additional inspections and certifications, taxes and fees. Your local Canadian Dealer is a professional at meeting these requirements.
- 4) Scheduling timely warranty repairs and adjustments through a local dealership provides far greater flexibility and convenience to you, the customer!

It is the goal of Forest River, Inc. that all of our RV owners fully enjoy the RV experience and that customer satisfaction meets or exceeds their expectations!

FREE MEMBERSHIP
to Forest River Owners' Group

www.forestriverfrog.com



Learn More

Scan this barcode using a QR Reader on your smart phone to learn more about Forest River.



A Berkshire Hathaway company.

Forest River, Inc.
2012 Century Dr.
Goshen, IN 46528
(574) 389-4600
www.forestriverinc.com/sandpiper
www.forestriveraccessories.com

YOUR SANDPIPER DEALER