

Blue Ridge

by Forest River

WIDE BODY FIFTH WHEELS

BLUE RIDGE FIFTH WHEELS



MAKE THE MOST OF LEISURE TIME

Blue Ridge

FIFTH WHEELS

Relax and Enjoy Life

Blue Ridge is designed with open, well-planned living spaces to comfortably welcome family and friends on long leisurely vacations. Blue Ridge standard features include solid Maple hardwood cabinet doors, satin nickel hardware, solid surface countertops with sink covers, and stainless steel kitchen sinks with a pull-out faucet. All Blue Ridge models feature flush floor slide outs for safety and easy movement throughout the coach.

3025RL *Imagine serving breakfast in this beautiful Blue Ridge kitchen equipped with these standards: a 42" LED TV, electric fireplace, convection/microwave, LED lighting, free standing dinette and a rolling, lockable island with two bar stools. (Theater seating is available as an option.)*

3025RL *Broad picture windows and facing flush-floor slide outs create an open, airy atmosphere. The 90" Hide-a-bed sofa and optional reclining theater seats are shown in Pewter bonded leather.*



3025RL



3025RL *This exceptional bedroom has a king bed, generous dresser drawers and a large closet with sliding mirrored doors, and is equipped with a stackable washer and dryer hook-up. Dual electrical supply permits both the washer and dryer to work simultaneously.*

3025RL *This well lit bathroom features a 30" x 60" Mega shower with a skylight and an extended height vanity.*



HOME STYLE LIVING AT ITS BEST



3125RT This storage friendly kitchen features include a solid surface countertop, convection microwave and three-burner stove with a 22 cu. in. oven.

3125RT

3125RT This spacious slide out is shown with the residential free standing dinette and optional Pewter bonded leather theater seating. Beautiful Maple hardwood cabinetry creates a warm, inviting atmosphere.



3125RT Kick back and watch the game on the 42" LED TV with an articulating swing arm. An electric fireplace and bonded leather upholstery create a comfortable place for conversation. Pewter decor shown.



3125RT This roomy bath features a spacious radius shower with a built-in seat and a textured glass door. A skylight lets in natural light.





3600RS

Raised panel Maple hardwoods, a mosaic tile kitchen backsplash and solid surface countertops add residential appeal while LED lighting throughout brightens up living areas. Standard Dometic Quiet Cool air conditioning, a convection microwave oven and under stove storage add convenience. A handy bulletin board with key hooks conceals the command center. Sienna decor with bonded leather seating and optional theater seating is shown in the living area.



3815FL

Friends appreciate this well appointed front theater living room with a 58" LED TV, CD/DVD/AM/FM stereo surround sound and a heated electric fireplace. This ample seating arrangement includes two extra large sofas – one with a hide-a-bed! The radius roof in all Blue Ridge models provides a feeling of spacious luxury.



3815FL This extra large wardrobe features solid hardwood maple doors and is shown with optional flip up 32" LED TV.



The two-color aerodynamic front end has LED lights for easy hitch hook-up.



3815FL Cooks enjoy this open kitchen with a large French door residential size refrigerator, rich solid maple hardwood cabinet doors, solid surface countertops, a deep stainless steel sink and a three burner, high output range with a 22" oven plus an overhead convection microwave.



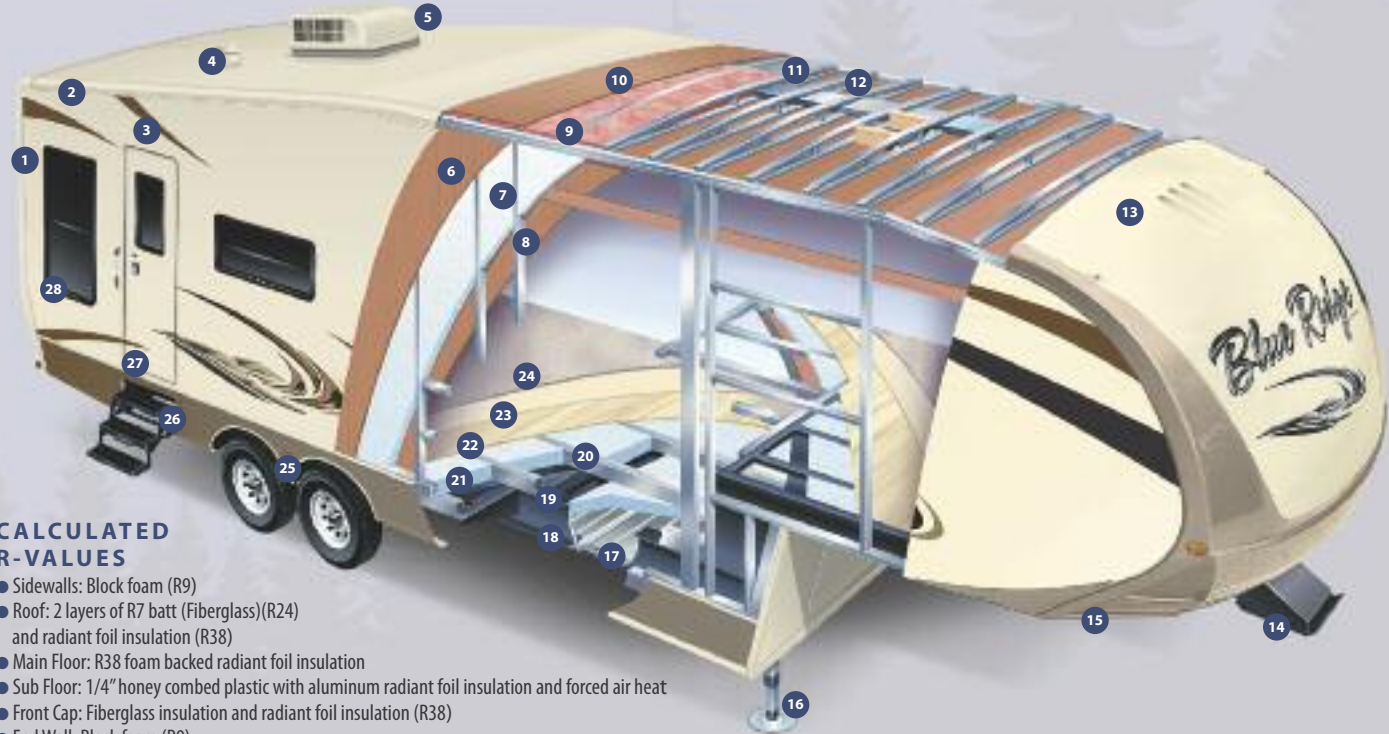
The **3815FL's** bath features an extra large radius shower with a glass door, a built in seat and a spray hose shower head.

Blue Ridge

FIFTH WHEELS

CONSTRUCTION FEATURES

1. Cream Pigmented High Gloss Gel Coat Fiberglass
2. One-Piece SuperFlex II™ Thermoplastic Polyolefin (TPO)
3. Deluxe Graphics Package
4. Two Attic Vents (Front and rear)
5. Dometic Quiet Cool 15,000 BTU Air Conditioner
6. Wet Laid Luan Substrate
7. Block Foam Insulation
8. Welded Tubular Aluminum Studs (2" Wall)
9. 2 Layers of Fiberglass Batt Insulation
10. 3/8" Roof Decking (Screwed)
11. Aluminum Radiant Foil Insulation
12. 5" Tapered Aluminum Roof Trusses
13. Gel Coat Fiberglass Exterior (Sidewalls, entry doors, compartment doors, end walls of slide-outs and front cap)
14. Extended Hitch Pin
15. Chamfered Frame Design for Extended Turning Radius
16. Extra Wide Front Hydraulic Jacks
17. Heated & Enclosed Underbelly
18. 10" Powder Coated Steel I-Beam w/Z-Frame (12" on 3600 RS, 3715 BH, 3775 RL, 3815 FL)
19. Black Polymax Moisture Barrier
20. Aluminum Floor Truss
21. Block Foam Insulation
22. 2" Laminated Wood Floor
23. Soft Foam Padding
24. Plush Carpet
25. MOR-Ryde Suspension
26. Extended Radius Entry Step
27. 30" x 76" Entry Door w/Light
28. Frameless Premium Windows



CALCULATED R-VALUES

- Sidewalls: Block foam (R9)
- Roof: 2 layers of R7 batt (Fiberglass)(R24) and radiant foil insulation (R38)
- Main Floor: R38 foam backed radiant foil insulation
- Sub Floor: 1/4" honey combed plastic with aluminum radiant foil insulation and forced air heat
- Front Cap: Fiberglass insulation and radiant foil insulation (R38)
- End Wall: Block foam (R9)

NEW WIDE BODY FIFTH WHEELS STANDARD FEATURES

INTERIOR

- Solid Hardwood Maple Raised Panel Glazed Cabinet Doors and Drawers
- Crown Molding
- Solid Wood Drawer Boxes (Baltic Birch)
- Ball Bearing, Full Extension Drawer Guides
- Dehco Trekk Flooring (3-Year Cold Crack warranty)
- Residential Carpet
- Residential Cabinet Hardware and Accents
- Satin Nickel Plumbing Fixtures
- Decorative Slide Room Fascia Frame
- Solid Wood Exit Assist Handle
- Fireplace (N/A 2950RK)

GALLEY

- LG Solid Surface Polished Counter Tops with Under Mount Sink
- Spice Rack (Where applicable)
- Double Bowl Stainless Steel Kitchen Sink
- High Rise "J" Spout Kitchen Faucet
- Hardwood Refrigerator Fronts
- Fantastic Fan with Rain Sensor
- Flush Floor Kitchen Slide-out

LIGHTING

- LED Running and Tail Lights
- LED Lighting Throughout
- Decorative Ceiling Light above Dinette
- Hanging Lighting above Sink with Decorative Mount
- Ceiling Fan
- Exterior LED Docking Lights (2 Mounted into front cap)
- Exterior Security Lights (2)
- Exterior Amber Patio Light
- LED Awning Light Strip

FURNITURE/WINDOW COVERINGS

- Swivel/glider Recliners (2) (N/A 3715BH, 3815FL; opt 2950RK)
- Free Standing Dinette Table with Dual Leafs and (2) Chairs with Flip-up Storage (2 Folding chairs)
- Three Seat Rear Sofa with Hide-A-Bed
- Bonded Leather Sofa and Recliners

- Night Shades
- Designer Fabric Window Treatments (Where available)

BATHROOM

- 12 Volt Power Roof Vent
- HPL Vanity Top with Oversized Residential Bowl
- Porcelain Toilet with Foot Flush
- Mega or Radius Shower
- Glass Shower Door
- Shower Skylight/Dome
- Adjustable Shower Head
- Medicine Cabinet with Mirrored Door
- Dedicated Heat and A/C Duct

BEDROOM

- Premium, Innerspring Mattress
- King Bed (N/A 2950RK)
- Designer Headboard, Bedspread, Pillows and Sham
- Full Height Hanging Wardrobe
- French Mirrored Closet Doors
- Stackable/Combination Washer/Dryer Prep
- Shoe Caddy
- Chest of Drawers
- Underbed Storage
- (2) Bedside Windows in Slide-Out
- (2) Reading Light with Individual Controls
- (2) Bedside Power Outlets

APPLIANCES

- 8 Cu. ft. Double Door Refrigerator
- Residential Refrigerator with 2000 Watt Inverter (Standard 3815FL)
- 3-Burner, High Output Range with 22" Oven
- Range Cover
- 30" Convection Microwave
- 42K BTU LP Furnace
- Wire and Frame for Second A/C
- Dometic Quiet Cool 15K Ducted AC
- 10 Gal. Gas/electric DSI Water Heater
- "Shurflo" On-demand High Output Water Pump (3g/min @ 55 psi)
- LP Leak Detector
- Carbon Monoxide Detector

ELECTRONICS

- 5-Function Remote Control with Key Fob
- Key Fob Operates Slides, Awning, Patio Light, Front Jacks and Rear Jacks
- 42" LED TV with HD Steel Swing Arm (32" – 3715BH, 58" – 3815FL)
- Furrion Theater System with Bluetooth, HDMI, DVD, AM/FM, Weather Band
- Digital TV Antenna with Signal Booster
- Glass Shower Door
- Cable TV Hook-ups (Bedroom)
- Cable TV Hook-up Exterior Garage Bulkhead
- Satellite Prep (Roof mounted)
- Exterior Flip-down Speakers

EXTERIOR

- High Gloss Pigmented Gel Coat Fiberglass Exterior on All Walls
- Front Cap: Molded Two Color Painted High Gloss Gel Coat Fiberglass with Led Light Accents
- Front Cap Design: Engineered with Extended Turning Radius (Chamfered front)
- Laminated Front Bulkhead with High Gloss Gel Coat Fiberglass
- Slam Latch 1.5" Thick Baggage Doors with High Gloss Gel Coat Fiberglass (N/A LP door)
- Slide End Walls: Laminated with High Gloss Gel Coat Fiberglass
- 30" x 76" Entry and Screen Door with High Gloss Gel Coat Fiberglass
- 45° Angled Skirting
- Automotive Hehr Frameless Windows
- Hydraulic Slide Room Power
- Individual Slide Room Selector Switches
- Roof Ladder
- Electric Awning with LED Light Strip
- Entry Assist Handle (XI-Folding)
- 1.5" Aluminum Black Belt Rail with Caps (No exposed screws)
- Roto-cast Spun Seamless Water/Waste Tanks
- PEX Plumbing System
- Enclosed, Heated Underbelly and Heated Tanks (Forced air heat)

- Dual Roof Vents
- LP Quick Disconnect

SLIDE ROOM SEAL/GASKET SYSTEM

- Aluminum "H" Frame Slide Room Perimeter
- Dual Neoprene Squeegee Seals
- Exterior and Interior "D" Seals
- Exterior "H" Seals

UTILITY DOCKING COMPARTMENT

- 12 Volt Light
- Outside Shower (Hot and cold)
- Black Tank Flush System
- Water Heater Bypass Valve
- Full Coach Water Filtration System
- Winterizing Bypass System
- Protected/Insulated Pull Waste Valves
- Waste Hose Storage Tube
- Slam Latch Baggage Doors (1.5" Thick)

CHASSIS/FOUNDATION

- I-beam "Z" Frame Powder Coated Chassis
- Chamfered Frame Technology
- 10" Beams: 2950RK, 3025RL, 3125RT
- 12" Beams: 3600RS, 3775RL, 3715BH, 3815FL
- Dual 6K Axles: 2950RK, 3025RL, 3125RT
- Dual 7K Axles: 3600RS, 3775RL, 3715BH, 3815FL
- Easy Lube Hubs
- MOR/ryde 3000 Suspension System
- 8 Lug Hubs
- Aluminum Rims 16"
- Radial Tires (E-rated)
- Spare Tire (Inside storage mount)
- Hydraulic Front Jacks
- Electric Rear Stabilizer Jacks
- Triple Steel Entry Steps (2950RK, 3025RL, 3125RT)
- Four Steel Entry Steps (3600RS, 3715BH, 3775RL, 3815FL)
- Flush Floor Slide Design with Steel Ramp and Glide Bar (Main Slide Room)
- Hydraulic Slide System with 2.5" Steel Rams

- Hydraulic Pump Station with Manual Overrides
- 18K Extended Hitch Pin

CONSTRUCTION

- Wide Body Construction
- Sidewalls: 2" Welded Aluminum Framed Vacuum Bonded Laminated Walls
- Roof: 5" Dual Radiused Aluminum Roof Trusses on 16" Centers
- Roof: Alpha Super Flex II TPO Roof Material
- Front Wall: Welded Aluminum Frame
- Rear Wall: 2" Welded Aluminum Frame Vacuum Bonded Laminated Wall
- Main Floor: 2" Vacuum Bond Laminated with Welded Aluminum Trusses
- Bath/Bed Floor/Deck: Welded Aluminum Frame
- Slide End Walls: 2" Welded Aluminum Frame, Laminated
- Slide Floor: 1" Wood Flooring

INSULATION

- Sidewalls: High Density Block Foam Insulation (R-9)
- Roof: Aluminum Radiant Foil Insulation and Fiberglass Insulation (R-38)
- Main Floor: High Density Block Foam Insulation and Aluminum Radiant Foil Insulation (R-38)
- Sub Floor: ¼" Honey Combed Plastic with Aluminum Radiant Foil Insulation and Direct Forced Air Heat
- Front Cap: Fiberglass Insulation and Aluminum Radiant Foil Insulation (R-38)
- End Wall: High Density Block Foam Insulation (R-9)

ELECTRICAL SYSTEMS

- Centralized Command Center and Monitor Panel
- 70 AMP Converter with Charge Wizard
- 50 AMP Service
- Marine Grade Detachable 50 AMP Power Cord
- 12 Volt Battery Disconnect
- Battery Prep Box (2)

OPTIONS

INTERIOR

- 12 Cu. ft. 4-Door Refrigerator (3600RS, 3775RL)
- 2 Door Residential Refrigerator with 2000 Watt Inverter (3025RL)
- 3 Door Residential Refrigerator with 2000 Watt Inverter (3600RS, 3775RL, Std. 3815FL)
- 32" LED HD Bedroom TV (Bunkhouse 3715BH)
- Night Roller Shades
- Booth Dinette
- Theater Seats
- (2) Recliners IPO J-Lounge (2950RK only)
- Serta Deluxe Pillow Top Mattress (Donald Trump Edition)
- Queen Bed with Night Stand (IPO King Bed)
- Hide-a-Bed sofa in Bunkroom
- Dyson DC 35 Vacuum Cleaner
- Oversized U-shaped Sofa Dinette (3715BH only)

EXTERIOR

- "Level Up" One-touch Automatic 6-Point Hydraulic Leveling System
- Dual Pane Frameless Windows
- Generator Prep
- 5.5 KW LP Generator (Includes prep)
- Slide-out Awning Toppers
- Dometic Quiet Cool 13.5 Ducted A/C in Bedroom (Standard on 3815FL)
- Heat Pump for 15,000 BTU A/C
- Fantastic Fan with Rain Sensor in Bedroom (N/A with Low profile 13.5 BTU AC)(N/A 3815FL)
- Rotoflex Pin Box
- Outside Entertainment Center with 32" LED TV
- Tank Heat Pads (12 Volt) (Secondary Heating System)
- Bike Rack

Control slides, electric front and rear jacks, awnings and patio light from the ALTA remote.

Hook up utilities, flush tanks and change the water filter from the universal docking station. Includes hot and fresh water bypass valves.

Sleek, frameless tinted windows help maintain interior temperature. (Dual pane option also available.)

Built with durable gel coated, vacuum bonded, laminated fiberglass sidewalls, end walls and roof on all slide outs.

Slam-Latch baggage doors are on all exterior compartment doors, except the LP tank door.

LCI One-Touch electric awning with adjustable arms.





Blue Ridge's spacious radius roof provides plenty of headroom and accommodates a ceiling fan. The overhead storage has stylish raised panel Maple hardwood doors.



A stainless steel dual bowl sink with a pull-out faucet and solid surface countertops are standard on all Blue Ridge models.



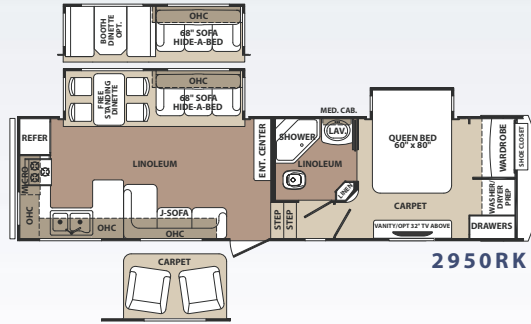
Whole unit water filter removes unpleasant odors and tastes.



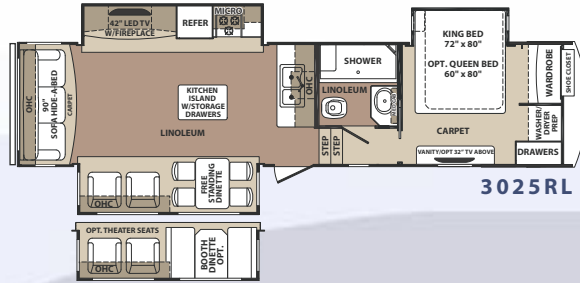
An easy access, full size spare tire is located in the spacious pass-thru storage area, not under the unit like the competition.



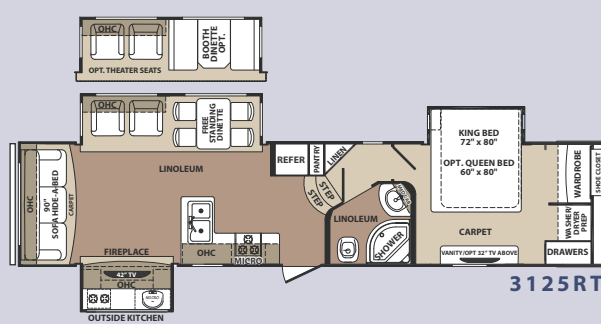
MOR/ryde CRE/3000 compressor rubber equalizer system for smoother towing.



2950RK



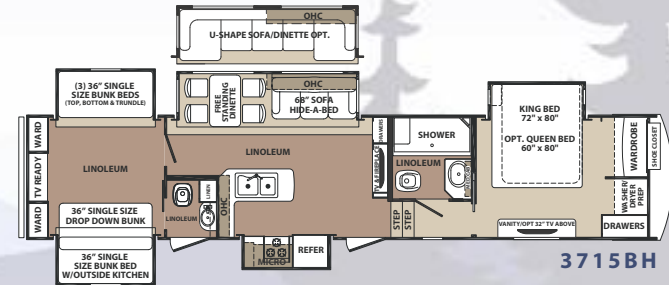
3025RL



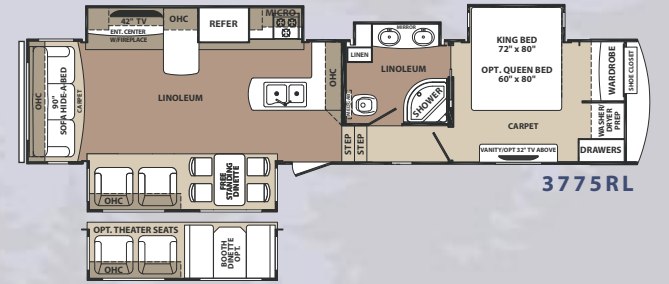
3125RT



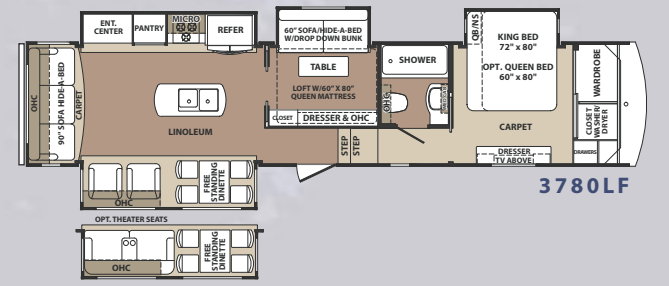
3600RS



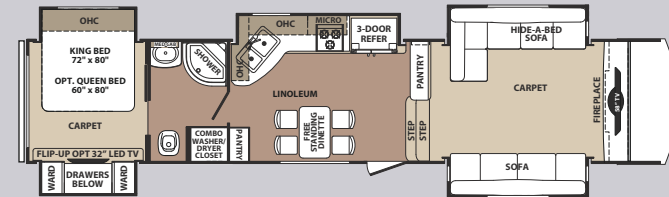
3715BH



3775RL



3780LF



3815FL

WIDE BODY	2950RK	3025RL	3125RT	3600RS	3715BH	3775RL	3780LF	3815FL
Length (Center of Pin to Rear of Bumper)	33' - 8"	37' - 3"	38' - 1"	40' - 8"	41' - 6"	40' - 1"	41' - 2"	41' - 6"
Shipping Weight	10251	11792	11904	12800	13819	12858	13341	13365
UVW	10310	11851	11963	12859	13878	12917	13400	13424
Hitch Weight	2317	2240	2136	2432	2473	2832	2583	2655
GAWR	12000	12000	12000	13680	13680	13680	13680	13680
GVWR	14317	14240	14136	16112	16153	16512	16263	16335
Cargo Carrying Capacity (CCC)	4007	2389	2173	3253	2275	3595	2863	2911
Exterior Height	13' 6"	13' 6"	13' 6"	13' 6"	13' 6"	13' 6"	13' 6"	13' 6"
Exterior Width	100"	100"	100"	100"	100"	100"	100"	100"
Interior Height (Bedroom)	81"	81"	81"	81"	81"	81"	81"	106 1/2"
Interior Height (Living area)	106 1/2"	106 1/2"	106 1/2"	106 1/2"	106 1/2"	106 1/2"	106 1/2"	81"
Tire Size	ST235/80R16E	ST235/80R16E	ST235/80R16E	ST235/80R16E	ST235/80R16E	ST235/80R16E	ST235/80R16E	ST235/80R16E
Brake Size	12"	12"	12"	12"	12"	12"	12"	12"
Fresh Water	64 gal.	64 gal.	64 gal.	64 gal.	64 gal.	64 gal.	64 gal.	64 gal.
Waste Water	120 gal.	120 gal.	120 gal.	120 gal.	160 gal.	120 gal.	120 gal.	120 gal.
Water Heater	10 gal.	10 gal.	10 gal.	10 gal.	10 gal.	10 gal.	10 gal.	10 gal.
Furnace	42000 BTU	42000 BTU	42000 BTU	42000 BTU	42000 BTU	42000 BTU	42000 BTU	42000 BTU
Patio Awning	17'	17'	19'	19'	19'	18'	18'	17'
Exterior Storage (Cu. ft.)	113	113	113	122	122	122	118	122

Quickly and easily flush the black tank. (3715 BH has two.)

GVWR (Gross Vehicle Weight Rating) - is the maximum permissible weight of the unit when fully loaded. It includes all weights at the unit's axle(s) and tongue or pin, inclusive of all fluids, occupants, cargo, optional equipment and accessories. For Safety and product performance do NOT exceed the GVWR.

UVW (Unloaded Vehicle Weight) * - is the typical weight of the unit as manufactured at the factory. It includes all weight at the unit's axle(s) and tongue or pin and LP Gas. The UVW does not include cargo, fresh potable water, additional optional equipment or dealer installed accessories.

*Estimated Average based on standard build optional equipment.
CCC (Cargo Carrying Capacity) ** - is the amount of weight available for all fluids, occupants, cargo, additional optional equipment and accessories. CCC is equal to GVWR minus UVW. Available CCC should accommodate fresh potable water (8.3lbs per gallon).

**Estimated Average based on standard build optional equipment.
 Each Forest River RV is weighed at the manufacturing facility prior to shipping. A label identifying the unloaded vehicle weight of the actual unit and the cargo carrying capacity is applied to every Forest River RV prior to leaving our facilities.

Blue Ridge

FIFTH WHEELS



EXPAND YOUR HORIZONS

With a selection of floorplans including double slideouts, spacious Blue Ridge Wide Body Fifth Wheels are designed to bring people together in comfort.

f Blue Ridge Division
58277 State Road 19 South ■ Elkhart, IN 46517 ■ (574) 296-7700
www.forestriverinc.com/blueridge ■ www.forestriveraccessories.com

All information contained in this brochure is believed to be accurate at the time of publication. However, during the model year, it may be necessary to make revisions and Forest River, Inc., reserves the right to make all such changes without notice, including prices, colors, materials, equipment and specifications as well as the addition of new models and the discontinuance of models shown in this brochure. Therefore, please consult with your Forest River, Inc., dealer and confirm the existence of any materials, design or specifications that are material to your purchase decision. All units are shipped F.O.B. point of manufacture. ©2015 Blue Ridge, a Division of Forest River, Inc., a Berkshire Hathaway company. All rights reserved. 5/15

FREE MEMBERSHIP
to Forest River Owners' Group

www.forestriverfrog.com



CHESTNUT



PEWTER



SIENNA



Your BLUE RIDGE Dealer



PRE-DELIVERY INSPECTION FACILITY

20,000 square feet of quality assurance. The bare essentials for a premium product. This state-of-the-art facility gives immediate daily feedback to production for quality assurance in every unit built.



Forest River, Inc. encourages our customers to purchase their Forest River products from a local dealership whenever possible for the following reasons:

- 1) Forest River, Inc. dealers are independently owned and operated businesses so priority service and scheduling is at their discretion and is often provided to customers that purchased their unit at that dealership.
- 2) Purchasing locally allows customers to establish meaningful relationships with a dealer, enhancing the RV experience through assistance with product questions, user tips or RV regulations for your state or country, and much more!
- 3) Canadian customers must meet requirements to bring an RV purchased out of the country to their home. These requirements may involve additional inspections and certifications, taxes and fees. Your local Canadian Dealer is a professional at meeting these requirements.
- 4) Scheduling timely warranty repairs and adjustments through a local dealership provides far greater flexibility and convenience to you, the customer!

It is the goal of Forest River, Inc. that all of our RV owners fully enjoy the RV experience and that customer satisfaction meets or exceeds their expectations!

24/7 EMERGENCY ROADSIDE ASSISTANCE

For a worry-free ownership experience Forest River includes one

Coach-Net[®]

RV Technical & Roadside Assistance

year of Coach-Net RV Technical & Roadside Assistance with each RV purchase. Whether new to the RV lifestyle or an experienced RV enthusiast, Forest River owners have 24/7 access to technical, operational and emergency road service coverage throughout the US & Canada. Coach-Net's fast, dependable service is just a phone call away.



Learn More
Scan this barcode using a QR Reader on your smart phone to learn more about Forest River.



A Berkshire Hathaway company.