

# Cottage

BY CEDAR CREEK

HATHAWAY EDITION  
WIDE BODY TRAVEL TRAILERS



THE SMART CHOICE  
FOR THE EXPERIENCED RV'ER

BY CEDAR CREEK

Cottage







40CCK

Enjoy the comfort of your very own Cottage at a favorite vacation spot. The Cedar Creek Cottage offers the convenience of a travel trailer with the amenities of a fine vacation home. The wide body design and eight foot interior heights provide roomy comfort for family and guests. Whether at the lake, in the mountains, or a favorite campground, your Cottage welcomes you with upscale features created to make you feel right at home.

#### KITCHEN FEATURES

- ◆ Stainless steel 30" microwave
- ◆ Stainless steel large oven with Piezo igniter and sealed burners
- ◆ Optional 20 cu. ft. stainless steel French door refrigerator with freezer drawer and ice maker
- ◆ 17 Kitchen drawers plus a double waste basket cabinet
- ◆ Cedar Creek's one-of-a-kind Hoosier Cabinet with sliding counter extension and utility garage create an abundance of beauty, versatility, and storage space.

*The bedroom slide accommodates a queen size bed that includes a deluxe Serta® mattress and large under bed storage area. The mirrored wardrobe, residential dresser, and lots of deep overhead cabinets provide plenty of personal storage space. An optional king sized bed is available in all models.*

Serta









Create your own living space with our new 40CD, designed with a multi-purpose room that can be used as a den, an office or a full second bedroom. Privacy doors allow for a quiet retreat or they can be opened to create large living space for family and friends. The contemporary La-Z-Boy® tri-fold sofa converts into a full size bed, or add the optional 36" overhead bunk for multiple sleeping areas.

### HOME COMFORTS

- ◆ Raised panel, European Beech cabinetry and hardwood stiles
  - ◆ Hidden hinges
  - ◆ Full extension, drawer roller guides
  - ◆ LG® countertops with under mounted, stainless steel sinks
  - ◆ Congoleum® Diamondflor™
  - ◆ Stainless steel appliances
  - ◆ Hardwood fascia
  - ◆ Freestanding table with leaf extension and 4 chairs
  - ◆ LED lighting
  - ◆ Day screen and black out roller shades
  - ◆ La-Z-Boy® furniture
  - ◆ Shaw carpeting
  - ◆ Electric fireplace
  - ◆ Jensen® electronics
  - ◆ Dirt Devil® central vacuum system
  - ◆ Fantastic Fan® with rain sensor –
- All designed with experienced RV'ers in mind.

*Cottage bathrooms all feature a 48" residential, one-piece fiberglass rectangular shower with sliding glass doors, a large seat and an upgraded shower head. An 18" circular flow porcelain toilet and linen cabinet complete this spacious bathroom.*







MAHOGANY



BEIGE



Live life comfortably with our standard La-Z-Boy® sofa sets. Choose Beige or Mahogany recliners, or theater seating for residential comfort that lasts a lifetime.



These day shades with blackout roller shades offer the best of both worlds. They're actually two shades in one – a night fabric lowers completely for privacy, or can be retracted to the top to reveal a full length day shade. Both day and night shades can be set in any position and are designed with speed and length controls for privacy or a scenic view.



Our freestanding table comes standard with a large leaf extension and four chairs. Optional water saving dishwasher

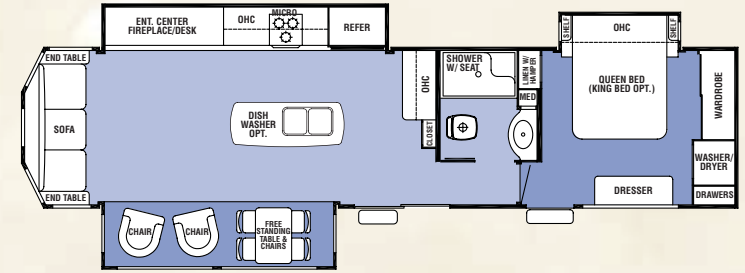


"Made in the USA" 20 watt LED Gig lighting throughout our cabin is cool to the touch, creates a brighter, white light, and uses 80% less electricity.

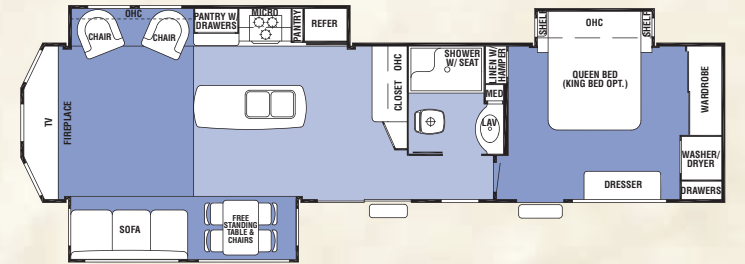
Watch the Cedar Creek Cottage construction video at: [www.forestriverinc.com/destinationtraveltrailers/cedarcreekcottage](http://www.forestriverinc.com/destinationtraveltrailers/cedarcreekcottage)

MODEL	40CRL	40CCK	40CRS	40CD
Exterior Length	41'4"	40'4"	41'6"	41'10"
Exterior Height w/Air Cond.	12'10"	12'10"	12'10"	12'10"
Exterior Width	102"	102"	102"	102"
Bedroom Interior Height	8'	8'	8'	8'
Hitch Weight	1,135	1,835	1,565	1,465
Axle Dry Weight	9,340	9,410	9,875	9,505
Unloaded Vehicle Weight	10,416	11,245	11,440	10,970
GVWR	13,135	13,835	13,565	13,465
Gross Cargo Capacity	2,710	2,590	1,066	2,495
Dual Axles (2)	6000# Straight	6000# Straight	6000# Straight	6000# Straight
Wheel Size	16 x 6	16 x 6	16 x 6	16 x 6
Tire Size	ST225/80R/16E	ST225/80R/16E	ST225/80R/16E	ST225/80R/16E
Awning Size	18'	18'	18'	18'
Furnace Size	40,000	40,000	40,000	40,000
Water Heater Size	20	20	20	20
Demand Fresh Water Cap.	76	76	76	76
Black and Grey Water Cap.	40 / 40 / 40 / 40	40 / 40 / 40 / 40	40 / 40 / 40 / 40	40 / 40 / 40 / 40
Sleeping Capacity	6	6	6	8

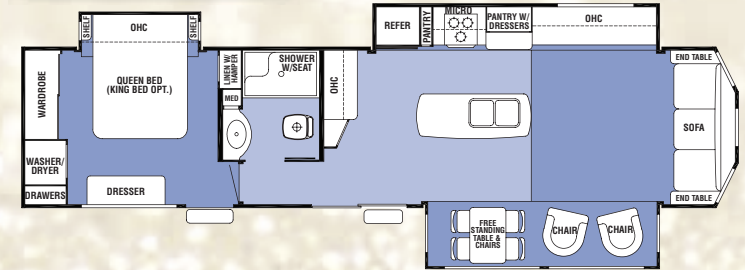
40CRS



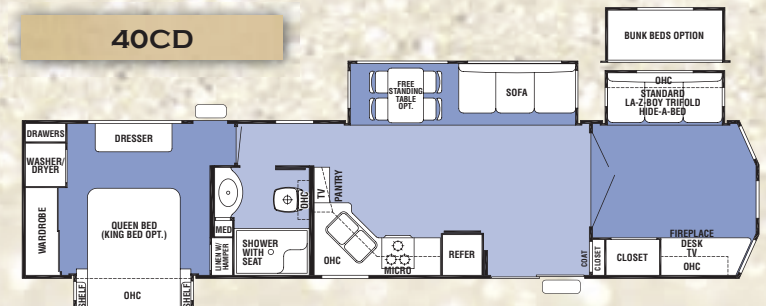
40CRL



40CCK



40CD



All Weights listed above are base weights. Weight capacities +/- 5%. NOTE: Model number of any particular unit does not necessarily reflect the overall length of the unit itself.



## STANDARD FEATURES AND OPTIONS

### HATHAWAY EDITION PACKAGE

- ◆ Golden Glazed European Beech cabinetry
- ◆ Solid surface LG® countertops with full twin stainless steel under-mounted sinks
- ◆ Sculpted solid hardwood fascia in living room
- ◆ Congoleum® Diamondflor
- ◆ Ceramic kitchen backsplash
- ◆ Island overhead with pendant lights and island surround
- ◆ Larger fireplace with surround
- ◆ New LED Lighting fixtures throughout the coach

### 2015 CEDAR CREEK COTTAGE SPECIAL PACKAGE

- ◆ "True" pearl gelcoat exterior – truly the best of the best in gelcoat exteriors. Stronger, thicker and keeps it's high gloss longer than our competitors less expensive gel "coated" exteriors
- ◆ Black metal wrapped electric awning with LED night lighting strip
- ◆ Rebonded carpet pad
- ◆ Jensen 46" LED television
- ◆ Day shade and blackout roller shades
- ◆ La-Z-Boy® sofa and recliner set with lifetime warranty on parts

### BEDROOM FEATURES

- ◆ 9 - 8" Deep drawers in main bedroom area
- ◆ Bedroom roof vent
- ◆ Serta® Dreamscape 60 x 80" queen bed (Optional 72 x 80" Serta® king bed), 2 x 2 finished bed base with gas lifts, side ventilation windows
- ◆ Ceiling mounted, individually switched, overhead reading lights
- ◆ Solid wood dresser top (No Formica)
- ◆ Washer/Dryer prep that allows for either combination or stack washer/dryer

### KITCHEN FEATURES

- ◆ Create-A-Breeze Fantastic Fan with thermostat and rain sensor in the kitchen
- ◆ Stainless steel 30" over the range microwave with built-in vent

- ◆ Residential, sealed burner, stainless steel oven with high output super burner, heavy duty removable grates, and iezo ignition
- ◆ Hidden hinges
- ◆ Crown molding complementing all overhead cabinets in kitchen area
- ◆ Free standing table with hidden table leaf extension and (4) chairs
- ◆ Residential style full extension drawer guides with travel locks
- ◆ Hoosier Cabinet (40CCK, 40CRL, 40CRS) with 2' expandable countertop and appliance garage

### MISC. FEATURES

- ◆ 20 Gallon electric water heater
- ◆ 12V Battery disconnect
- ◆ Carbon monoxide detector
- ◆ Cedar Creek switch control center
- ◆ Dometic comfort control center with dual zone controller heating and cooling
- ◆ LP gas/Carbon monoxide detector
- ◆ Smoke detector
- ◆ Solid state 65 amp power converter
- ◆ 40,000 BTU furnaces
- ◆ Wall mount monitor panel

### LIVING ROOM

- ◆ Ceiling fan with light
- ◆ Custom designed day/night roller shades
- ◆ Dimplex® fireplace - the world leader in electric fireplaces
- ◆ Lambrequin style valance with curtains throughout except bedroom
- ◆ Solid wood fascia – most competitors have switched to false wood foam
- ◆ Shaw® r2x® stain and soil resistant system carpeting in all living room and bedroom areas

### BATHROOM

- ◆ 18" Tall porcelain toilet with circular flow flush system
- ◆ 2" (10) Blade bathroom Breeze power bath vent with convenient wall switch
- ◆ Bath towel rack and toilet paper holder
- ◆ Large, double stack bathroom mirror medicine cabinet with overhead make-up lights
- ◆ Linen cabinet

- ◆ 48" One-piece fiberglass residential shower with large seat and upgraded shower head

### EXTERIOR FEATURES

- ◆ 102" Wide body
- ◆ 50 Amp service
- ◆ 7' (84") Tall slide-outs
- ◆ 8' (96") Interior height
- ◆ ABS Ribbed underbelly panels with no screws into the I-Beam frame
- ◆ Black metal wrapped electric awning
- ◆ Black tank flush
- ◆ Break away switch
- ◆ Cambered 10" I-Beam
- ◆ Cedar Creek's famous ALL residential super-structure aluminum
- ◆ Clamp ring windows with butyl rubber seals
- ◆ Convenient single access phone jack and cable TV connections
- ◆ Decorative front cap with molded picket fence
- ◆ Detachable hitch
- ◆ Ducted 15,000 BTU Duo-Therm "HP" (High performance) air conditioner - the most powerful in RV's today! Prepped for a second optional ducted 15,000 BTU duo-therm "HP" unit. Circular motion ductwork and cold air returns with a larger compressor to force 30% more air.
- ◆ Enclosed and triple layered insulated underbelly (R-38)
- ◆ Hitch light
- ◆ Large surface 12V heating pads on all holding and fresh water tanks
- ◆ Lighted entry step
- ◆ Marine grade 5/8" tongue and groove plywood floor
- ◆ Porch light
- ◆ Royal Silaprene® bonded sidewalls – resilient, grows stronger with age. Also has outstanding resistance to UV, heat, cold, moisture, oils, gasoline, highway chemicals; creates a bond that cannot delaminate with time.
- ◆ Satellite and cable hook-ups into living room and bedroom
- ◆ Selector switches for slide-rooms
- ◆ Thermal pane patio door

### COTTAGE EXPLORER PACKAGE

- ◆ **Dexter Safety and Performance Package:**
  - Nev-R-Adjust™ brakes are always properly adjusted for improved stopping power in half the distance
  - Heavy duty axles with 1/2" link plates in shackles
  - 16" 8-Lug, ST, "E" tires Dexter axles
- ◆ 18 Cu ft. Gas/Electric refrigerator with exterior digital temperature gage and thermostat
- ◆ Jensen Slimline AM/FM/DVD/CD/USB bluetooth stereo system with powered subwoofer, (4) interior speakers, and (2) exterior speakers
- ◆ Front "True" gelcoat cap
- ◆ Winegard® HD ready pre-wire
- ◆ One year of Coach Net roadside assistance
- ◆ Membership to the Forest River Owner's Group (F.R.O.G.)

### OPTIONS

- ◆ 2nd Ducted 15,000 BTU high performance "HP" air conditioner for (2) total
- ◆ 20 Cu. ft. electric French door refrigerator with ice maker
- ◆ 30" Stainless steel convection oven/microwave
- ◆ Stainless steel dishwasher
- ◆ 72 x 80" King size bed with Serta® mattress
- ◆ Trump Luxury queen and king mattress
- ◆ Awning toppers
- ◆ Awning toppers with metal wrap
- ◆ Beige leather La-Z-Boy® recliners
- ◆ Ottoman with hidden storage
- ◆ 36" Overhead bunk (40CDBR only)
- ◆ Additional 12' slide patio awning
- ◆ Create-A-Breeze Fantastic fans with thermostat and rain sensor in the bedroom area
- ◆ Central vacuum system
- ◆ Heat pump
- ◆ Washer/dryer prep
- ◆ Splendide® combination washer/dryer
- ◆ Splendide® stackable washer and dryer - wired individually to allow simultaneous wash and dry cycles
- ◆ Thermal pane windows
- ◆ Dexter axles and suspension
- ◆ 16" ST (Special Trailer) tires
- ◆ Membership to the Forest River Owner's Group (F.R.O.G.)

DÉCOR

AUTUMN

PEWTER

PARADISE

DOMINO



## 40CRS

*This amazing 12 volt Jensen Home Theater System includes full integration with Apple's iPhone, iPod, iPad, plus Bluetooth streaming audio, MP3, and weather band information. A digital handshake between the 46" Jensen television and stereo, makes this system the RV industry's first, easy to use, stereo with all-digital connectivity. Control the stereo and interior/exterior speakers with your phone, or the remote from inside or outside the coach.*



**LIFE'S A JOURNEY – ENJOY IT!**



**Learn More**  
Scan this barcode using a QR Reader on your smart phone to learn more about Forest River.



A Berkshire Hathaway company.

**FREE MEMBERSHIP**  
to Forest River Owners' Group

[www.forestriverfrog.com](http://www.forestriverfrog.com)



### Forest River, Inc.

501 Hawpatch Road ♦ Topeka, IN 46571 ♦ Ph: 260-593-2404 ♦ Fax: 260-593-2447

Parts and Service Ph: 260-593-3017 ♦ Fax: 260-593-2645

Visit our website at: [www.forestriverinc.com/destinationtraveltrailers/cedarcreekcottage](http://www.forestriverinc.com/destinationtraveltrailers/cedarcreekcottage)

**DEALER**



### PRE-DELIVERY INSPECTION FACILITY

20,000 square feet of quality assurance. The bare essentials for a premium product. This state-of-the-art facility gives immediate daily feedback to production for quality assurance in every unit built.

### 24/7 EMERGENCY ROADSIDE ASSISTANCE

For a worry-free ownership experience

Forest River includes one

year of Coach-Net RV Technical & Roadside

Assistance with each RV purchase. Whether

new to the RV lifestyle or an experienced RV enthusiast,

Forest River owners have 24/7 access to technical,

operational and emergency road service

coverage throughout the US & Canada.

Coach-Net's fast, dependable

service is just a phone

call away.

**Coach-Net®**

RV Technical & Roadside Assistance



1) Forest River, Inc. dealers are independently owned and operated businesses so priority service and scheduling is at their discretion and is often provided to customers that purchased their unit at that dealership.

2) Purchasing locally allows customers to establish meaningful relationships with a dealer, enhancing the RV experience through assistance with product questions, user tips or RV regulations for your state or country, and much more!

3) Canadian customers must meet requirements to bring an RV purchased out of the country to their home. These requirements may involve additional inspections and certifications, taxes and fees. Your local Canadian Dealer is a professional at meeting these requirements.

4) Scheduling timely warranty repairs and adjustments through a local dealership provides far greater flexibility and convenience to you, the customer!

**Forest River, Inc. encourages our customers to purchase their Forest River products from a local dealership whenever possible for the following reasons:**

It is the goal of Forest River, Inc. that all of our RV owners fully enjoy the RV experience and that customer satisfaction meets or exceeds their expectations!

All illustrations and specifications contained in this literature are based on the latest product information at the time of publication. Forest River, Inc. reserves the right to make changes in prices, colors, materials, equipment and specifications at any time without notice and assumes no responsibility for any error in this literature. All units are shipped F.O.B. Topeka, Indiana. CONSULT YOUR LOCAL DEALER FOR WARRANTY INFORMATION.

©2014 Cottage by Cedar Creek, a Division of Forest River, Inc., a Berkshire Hathaway Company. All Rights Reserved. 12/14