



IT'S YOUR TURN. CREATE YOUR OWN MEMORIES.



*It's your turn.*

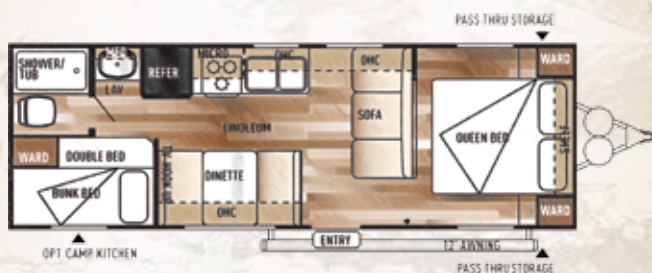
**CREATE YOUR OWN MEMORIES.**





CRUISE LITE  
**261BHX L**  
OUR MOST POPULAR MODEL

INTERIOR SHOWN IN  
**MEADOW**

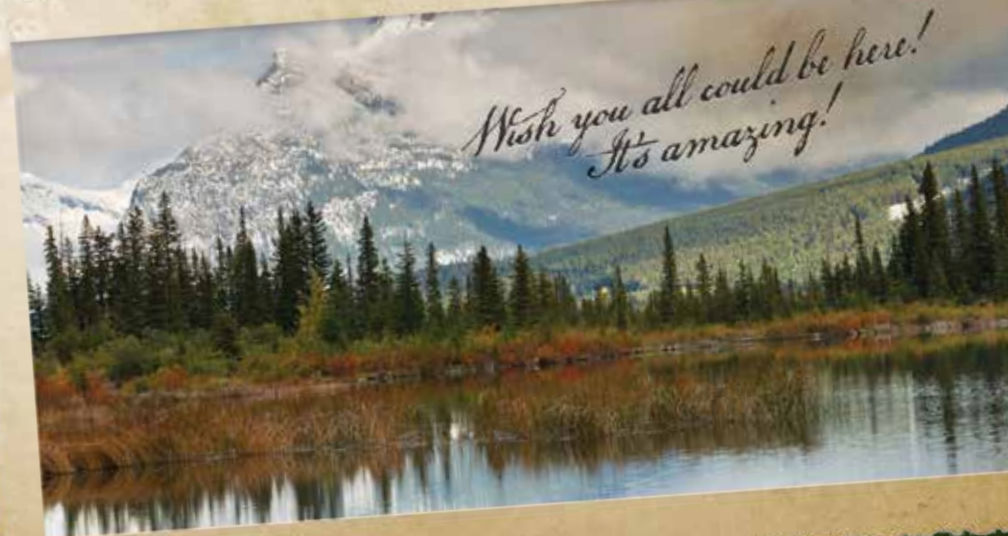


**LIGHTWEIGHT TOWABILITY FOR YOUR FAMILY**

Your family can relax in our lightweight trailers without the typical lightweight size or price. Salems are 8' wide (instead of 7.5') at a price that is significantly lower than the competitor's. Creating fond memories should be worth a fortune... they shouldn't cost one!

**PREMIUM STANDARDS**

Enjoy true hardwood tabletops, full-size cabinets with base shelves and glass inserts, along with numerous other amenities. With the lightweight construction, our 261BHX L is one of the most sought after coaches in the market!



Optional Outside Camp Kitchen





CRUISE LITE  
**262BHXL**

FAMILY FRIENDLY TOWABLE COACH

INTERIOR SHOWN IN  
**MINERAL**

**THIS IS YOUR TIME.** With an optional power package and remote control that will make this one of the easiest coaches to set up and break down, why not spend that time enjoying life and making memories? Get outside, take that hike, create fond memories with your family. When you do finally get back to the trailer, unwind in style for a fraction of the cost of competitor's coaches.





A

J

G

I

H

E

F

D

B

C

6

REST ASSURED, YOUR COACH IS BUILT WITH PRIDE AND INTEGRITY BY OUR DEDICATED TEAM OF CRAFTSMAN.

CRUISE LITE  
**INTERIOR FEATURES**

**INTERIOR SHOWN IN LEATHER**

- A.** FM Radio, DVD Player w/ MP3 Hook-up
- B.** Cherry Stained, Hardwood Table Top
- C.** Armstrong® Linoleum - Scratch, Tear, and Cold-Resistant Flooring.
- D.** Shoe Nook (Some models)
- E.** Double-stitched, Pillow Back Jiffy Sofa
- F.** "High Definition" Countertops
- G.** Extra Large Cabinets with Base Shelf and Glass Inserts
- H.** Night Shades
- I.** Decorative Curtain Rods and Curtains
- J.** Dahlia Cherry Mouldings, Cabinets and Shelves.



1



2



3



4



5



6



7



8

1. Extra Large Cabinet Doors with Glass Inserts

2. Full Extension Ball Bearing Drawer Guides Allow You to Access The Whole Drawer and Provides Years of Trouble-Free Service. (Per Floorplan)

3. Exterior Speakers Allow You to Enjoy Your Favorite Music While Relaxing Outside Your Coach.

4. 5/8" Tongue and Groove Plywood Floor Decking, Much Stronger, More Durable and Longer Lasting than the Competitor's OSB.

5. The Cruise Lite has Spacious Pass-Through Storage Allowing You to Pack Oversized or Bulky Items.

6. Clean Up is a Breeze With The High Rise Faucet and Large Sink.

7. 6 Gal. Gas DSI Water Heater.

8. Cherry Stained Solid Wood Table Top

**STANDARD FEATURES**

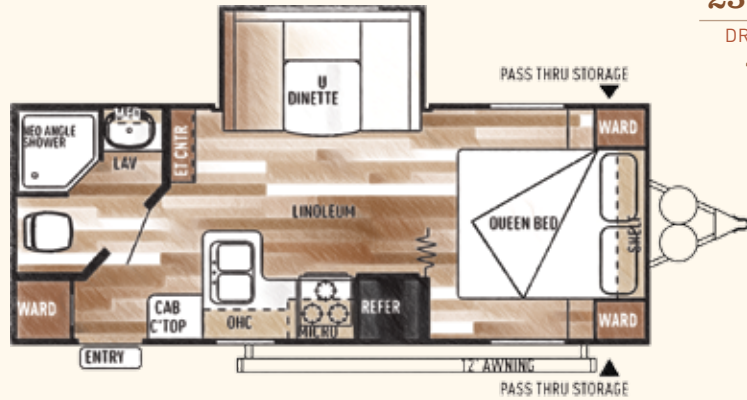
- Aerodynamic Front Profile
- NEW: Taller Interior Heights
- NEW: Plank Wood Linoleum
- NEW: Cherry Stained Solid Wood Tabletop
- NEW: Brushed Nickel Cabinet Hardware
- NEW: Extra Large Cabinets with Glass Inserts
- Central Switch Center
- High Definition Counter Tops
- 13.5K A/C (non-ducted)
- Diamond Plate Rock Guard
- Digital TV Antenna w/ Booster
- 2 Exterior Speakers
- 2-20# LP Bottles w/Hard Cover
- Microwave
- Water Heater By-Pass
- Kitchen Backsplash
- Single Door Refrigerator
- Ball Bearing Drawer Guides
- 6 Gal. Gas DSI Water Heater
- Pass Thru Storage
- Awning
- Bedsprad for Main Bed
- Cable/Satellite Hookups

**POPULAR OPTIONS**

- Double Door Refer IPO Single Door
- Stabilizer Jacks
- Range with Oven IPO Cook Top
- Spare Tire & Carrier
- Ducted A/C

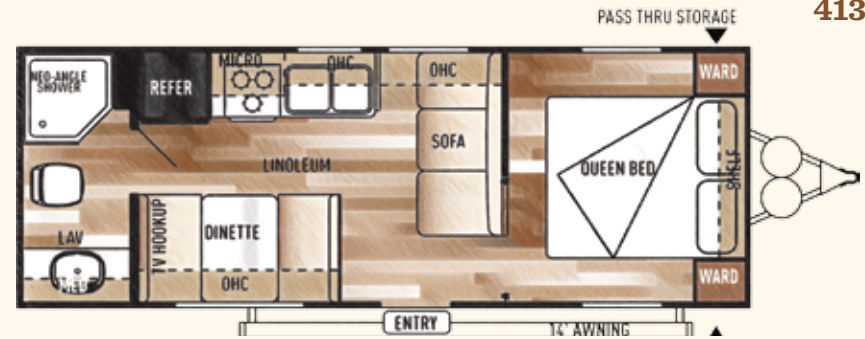
### 231RBXL

DRY WEIGHT:  
4718



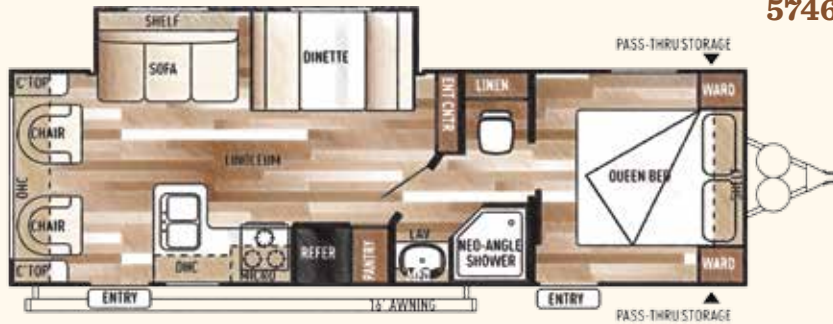
### 241QBXL

DRY WEIGHT:  
4135



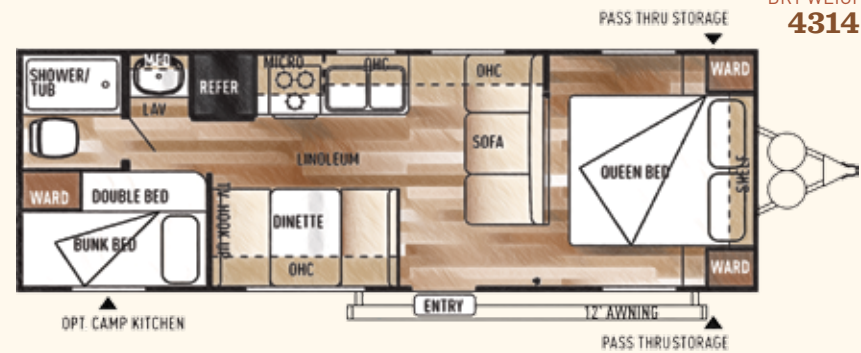
### 253RLXL

DRY WEIGHT:  
5746



### 261BHXL

DRY WEIGHT:  
4314



## Cruise Lite Travel Trailers

	T231RBXL	T241QBXL	T253RLXL	T261BHXL	T262BHXL	T271RBXL	T272QBXL	T281QBXL
HITCH WEIGHT (LBS.)	631	499	685	434	650	672	735	649
DRY SHIP WEIGHT (LBS.)	4718	4135	5746	4314	5801	5772	5884	5438
CARGO CARRYING CAPACITY (LBS.)	2854	3326	1901	3082	1811	1881	1832	2173
EXTERIOR LENGTH	24'7"	26'11"	30' 8"	29'1"	30'5"	30'5"	32'10"	32'6"
EXTERIOR HEIGHT	10'4"	9'11"	10' 4"	9'11"	10'4"	10'4"	10'4"	10'2"
FRESH WATER CAPACITY (GAL.)	40	40	40	40	40	40	40	40
BLACK WATER CAPACITY (GAL.)	32	30	43	30	32	43	35	34
GREY WATER CAPACITY (GAL.)	43	40	32	28	32	32	32	32
AWNING SIZE (FT.)	14'	14'	16'	12'	15'	14'	16'	16'

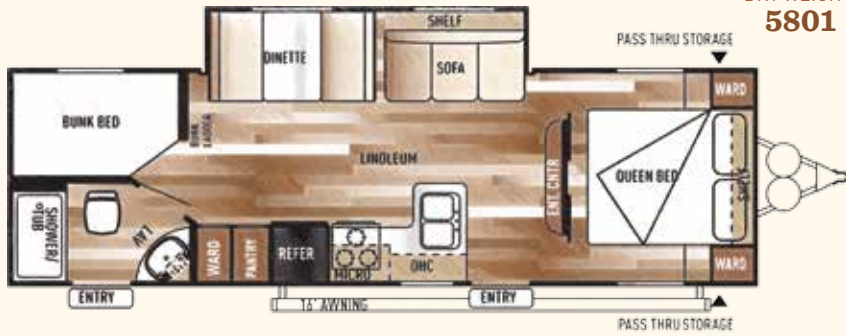
### FLOORPLAN KEY

OHC	OVERHEAD CABINET
WARD	WARDROBE
MICRO	MICROWAVE
LAV	BATHROOM SINK
MED	MEDICINE CABINET



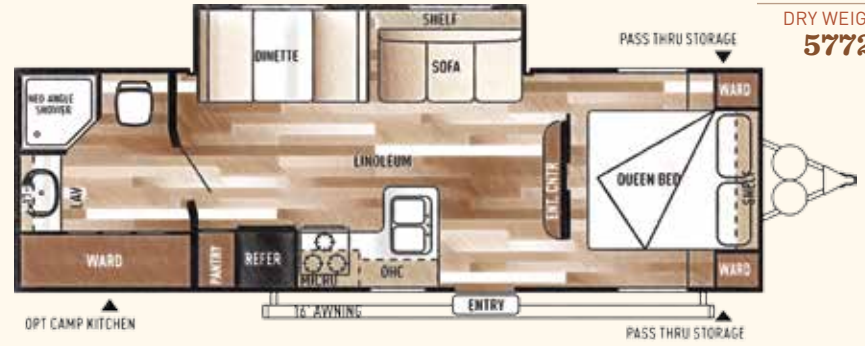
### 262BXL

DRY WEIGHT:  
**5801**



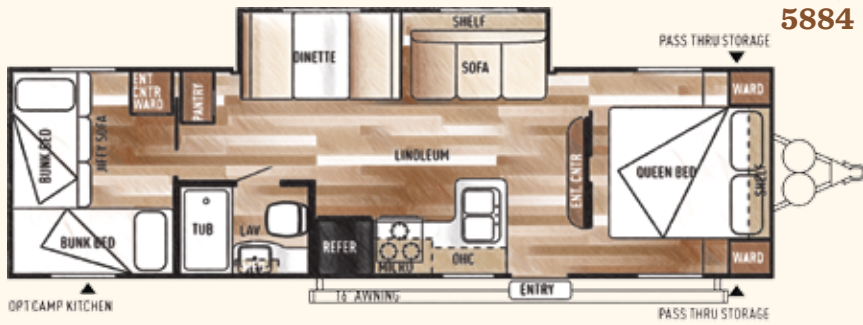
### 271RBXL

DRY WEIGHT:  
**5772**



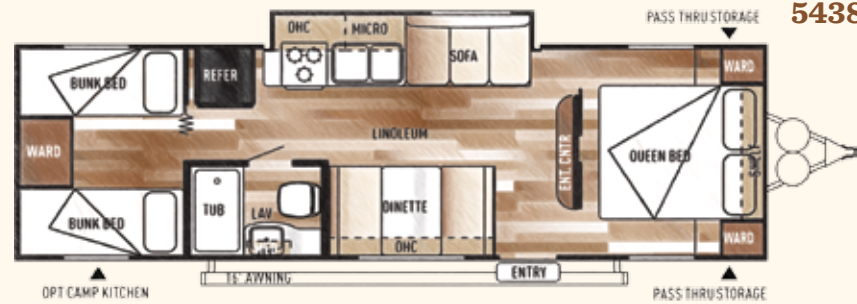
### 272QBXL

DRY WEIGHT:  
**5884**



### 281QBXL

DRY WEIGHT:  
**5438**





CRUISE LITE  
**195BH**  
LIGHTWEIGHT  
FACTORY SELECT

---

**3,000 LB.**  
LIGHTWEIGHT SOLUTIONS

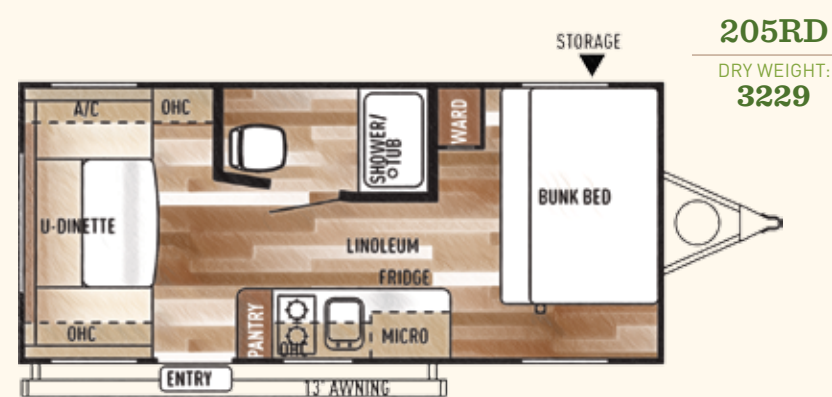
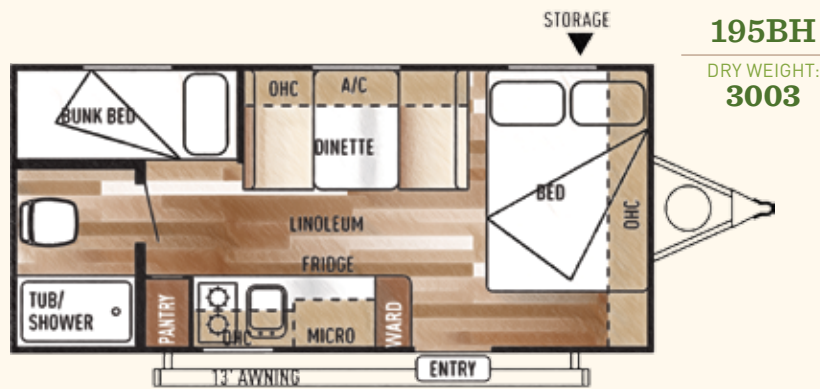
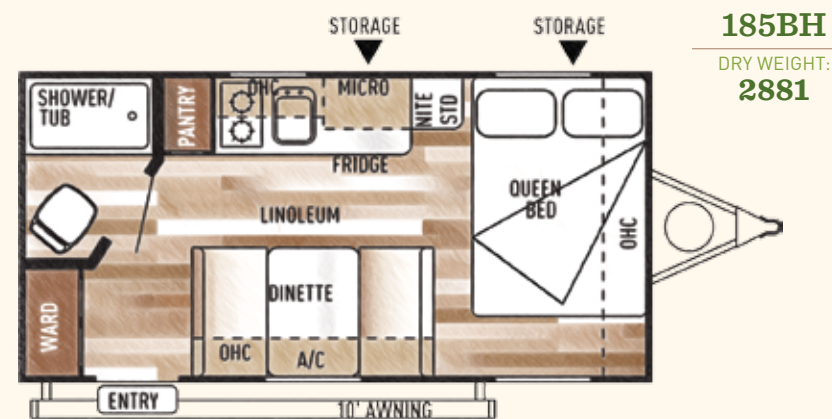
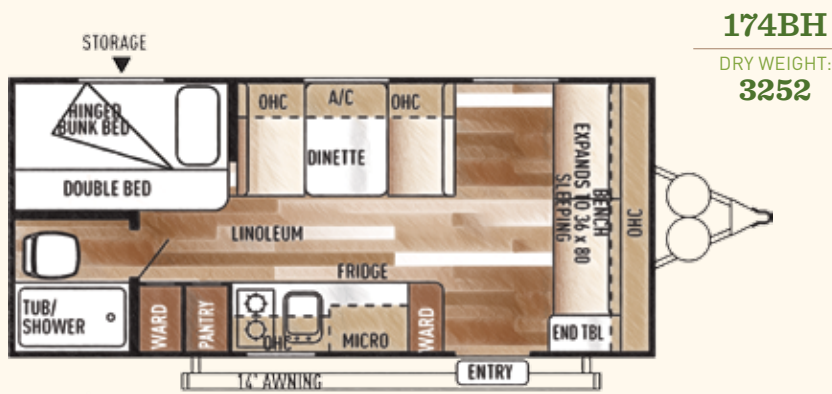
---

**YOUR SEARCH IS OVER.**

If you are looking for an ultra-lightweight coach that can be towed by most vehicles, then your search is finally over. Get rid of the canvas and step into a new Factory Select Edition trailer.

---

*Special Note: These are built in limited supplies. They are only built a couple times a year, so don't miss your opportunity!*



## Cruise Lite FS Edition Travel Trailers

	T174BH	T185BH	T195BH	T205RD
HITCH WEIGHT (LBS.)	489	328	403	336
DRY SHIP WEIGHT (LBS.)	3252	2881	3003	3229
CARGO CARRYING CAPACITY (LBS.)	718	928	881	588
EXTERIOR LENGTH	22'2"	19'10"	21'5"	21' 10"
EXTERIOR HEIGHT	10'4"	10'4"	10'4"	10' 4"
FRESH WATER CAPACITY (GAL.)	28	28	28	28
BLACK WATER CAPACITY (GAL.)	25	25	25	25
GREY WATER CAPACITY (GAL.)	25	28	25	25
AWNING SIZE (FT.)	14'	10'	13'	13'



### FLOORPLAN KEY

OHC	OVERHEAD CABINET
WARD	WARDROBE
MICRO	MICROWAVE

# The Salem Line-Up



SALEM CRUISE LITE



SALEM



SALEM VILLA | VILLA ESTATE



SALEM HEMISPHERE



**FREE MEMBERSHIP**  
to Forest River Owners' Group

[www.forestriverfrog.com](http://www.forestriverfrog.com)



**Learn More**  
Scan this barcode using a QR Reader on your smart phone to learn more about Forest River.



A Berkshire Hathaway company.

Forest River, Inc. 55470 C.R. 1 Elkhart, IN 46515 | (574) 533-5934  
[www.forestriverinc.com/Salem](http://www.forestriverinc.com/Salem) | [www.forestriveraccessories.com](http://www.forestriveraccessories.com)

YOUR SALEM CRUISE LITE DEALER

## 24/7 EMERGENCY ROADSIDE ASSISTANCE

For a worry-free ownership experience Forest River includes one year of Coach-Net RV Technical & Roadside Assistance with each RV purchase. Whether new to the RV lifestyle or an experienced RV enthusiast, Forest River owners have 24/7 access to technical, operational and emergency road service coverage throughout the US & Canada. Coach-Net's fast, dependable service is just a phone call away.

## Coach-Net®

RV Technical & Roadside Assistance



Forest River, Inc. encourages our customers to purchase their Forest River products from a local dealership whenever possible for the following reasons:

- 1) Forest River, Inc. dealers are independently owned and operated businesses so priority service and scheduling is at their discretion and is often provided to customers that purchased their unit at that dealership.
- 2) Purchasing locally allows customers to establish meaningful relationships with a dealer, enhancing the RV experience through assistance with product questions, user tips or RV regulations for your state or country, and much more!
- 3) Canadian customers must meet requirements to bring an RV purchased out of the country to their home. These requirements may involve additional inspections and certifications, taxes and fees. Your local Canadian Dealer is a professional at meeting these requirements.
- 4) Scheduling timely warranty repairs and adjustments through a local dealership provides far greater flexibility and convenience to you, the customer!

It is the goal of Forest River, Inc. that all of our RV owners fully enjoy the RV experience and that customer satisfaction meets or exceeds their expectations!



### PRE-DELIVERY INSPECTION FACILITY

20,000 square feet of quality assurance. The bare essentials for a premium product. This state-of-the-art facility gives immediate daily feedback to production for quality assurance in every unit built.