

FLAGSTAFF

FLAGSTAFF

SUPER LITE, SUPER V LITE, MICRO LITE AND SHAMROCK



SUPER LITE, SUPER V LITE, MICRO LITE AND SHAMROCK



YOUR LITE WEIGHT SPECIALIST.

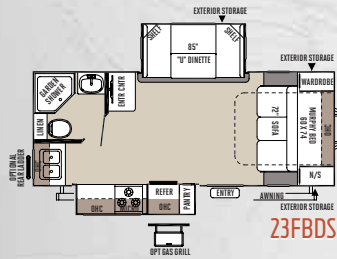
FLAGSTAFF

SUPER LITE

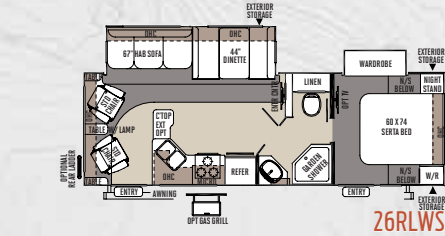
YOU'LL LOVE WHAT YOU FIND IN OUR FLOOR PLANS. Our trailers are packed full of quality features in order to bring to you one of the best values in the light weight market. There are spacious flush floor slides, comfortable stylish sofas and wide dinettes with easily adjustable legs. We only use our best inside the "Super Lite" series.



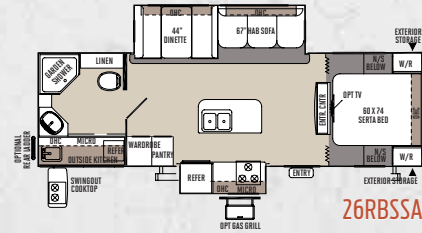
26RBSSA EMERALD PACKAGE HARBOR WITH CHERRY



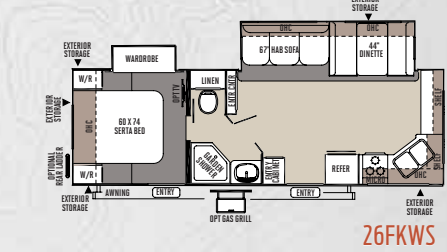
23FBDS



26RLWS



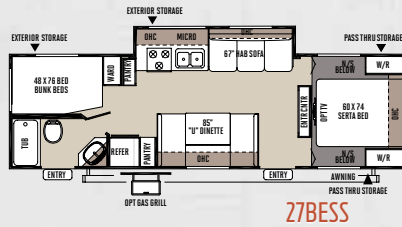
26RBSSA



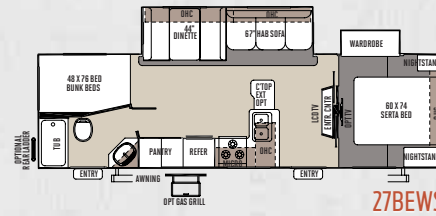
26FKWS



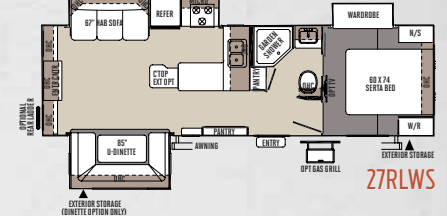
Free Standing Table and Chairs optional with:
23FBDS, 26RLWS, 26RBSSA,
26FKWS, 27BEWS, 27RLWS,
27VRL, 28VRBS, 29RLWS,
29IKTS.



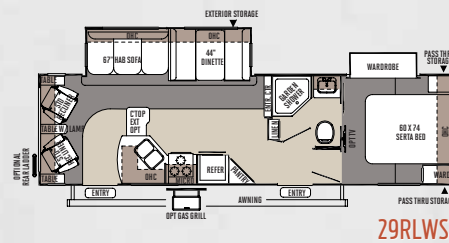
27BESS



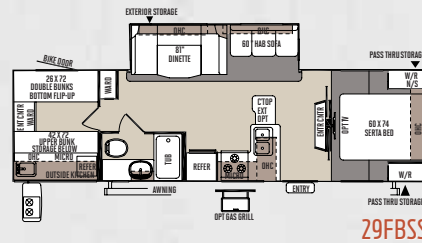
27BEWS



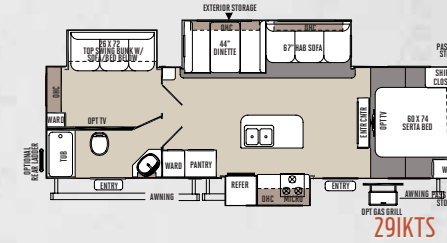
27RLWS



29RLWS



29FBSS



29IKTS



Super Lite with Emerald Package



Super V Lite

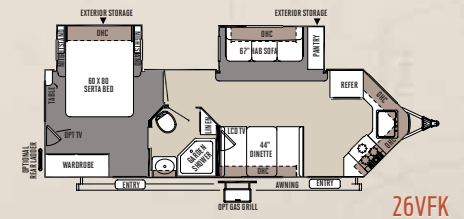
SPECIFICATIONS.

Model number of any particular unit does not necessarily reflect the overall length of the unit itself.

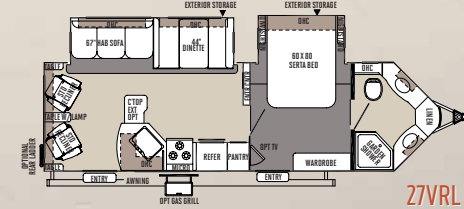
MODEL	23FBDS	26RLWS	26RBSSA	26FKWS	27BESS	27BEWS	27RLWS	29RLWS	29FBSS	29IKTS	26VFKS	27VRL	28VRBS
BASE DRY UNIT WEIGHT	5012	5779	6042	5716	5246	6053	6443	6279	5872	6566	6161	6504	6239
BASE DRY HITCH WEIGHT	606	714	846	748	629	788	618	810	730	876	784	858	794
BASE DRY AXLE WEIGHT	4406	5065	5196	4968	4617	5265	5825	5469	5142	5690	5377	5646	5445
CARGO CAPACITY	1535	1508	1538	1515	1345	1527	1453	1472	1546	1588	1564	1296	1496
LENGTH	24' 9"	29' 6"	31'	29' 6"	31' 11"	32' 1"	31' 11"	33' 5"	33' 5"	33' 5"	29' 9"	31' 8"	31' 9"
WIDTH	96"	96"	96"	96"	96"	96"	96"	96"	96"	96"	96"	96"	96"
HEIGHT W/O A/C	115"	115"	115"	115"	111"	116"	116"	116"	114"	115"	116"	116"	116"
INTERIOR HEIGHT	80"	80"	80"	80"	80"	80"	80"	80"	80"	80"	80"	80"	80"
FRESH WATER CAPACITY	36 gal	36 gal	36 gal	36 gal	36 gal	36 gal	36 gal	36 gal	36 gal	36 gal	36 gal	36 gal	36 gal
GRAY WATER CAPACITY	37 gal	37 gal	74 gal	74 gal	37 gal	37 gal	37 gal	74 gal	37 gal	74 gal	74 gal	74 gal	37 gal
BLACK WATER CAPACITY	37 gal	37 gal	37 gal	37 gal	37 gal	37 gal	37 gal	37 gal	37 gal	37 gal	37 gal	37 gal	37 gal

The Base/Dry Unit Weight listed represents the weight of one trailer with that model's standard equipment including specified Convenience Package content. The actual weight of a trailer with its specific option content is documented on the yellow weight tag attached to the unit when weighed upon completion. This weight is provided for use in comparison to the manufacturer's published towing capacity of potential tow vehicles. **Be aware that many brands choose to show unloaded weights that do not include options.**

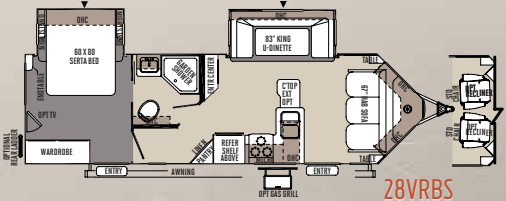
SUPER V LITE



26VFK



27VRL



28VRBS

WE'RE BUILDING A LEGACY WITH

FLAGSTAFF

THE TRADITIONAL SUPER LITE TRAILER CONTINUES TO PROVIDE UNSURPASSED VALUE AND COMFORT.

The spacious interiors offer numerous windows, 80" vaulted ceilings with directional vented air conditioning and extensive interior LED lighting throughout. Rich with appointments like the flush mount Stonecast sink, a stove top with glass cover, 22" oven and distinctive Cherry or Hickory cabinets with solid wood doors and drawer fronts throughout add to the tremendous value provided.



Featuring an aluminum framed with vacuum bonded construction, fiberglass exterior and deluxe graphics, the Super Lite is one of the best constructed, most well insulated trailers available on the market today.

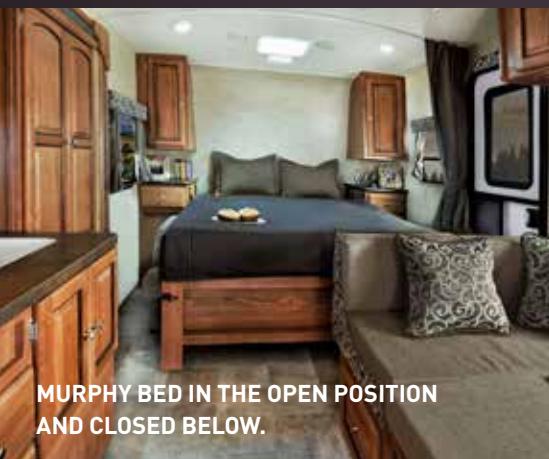


ST. JAMES WITH HICKORY

THE EMERALD PACKAGE. THE LEGACY CONTINUES.

To continue this tradition, Flagstaff offers a group of appealing features to enhance the appearance of the Super Lite series. The Emerald package adds style and luxury as demonstrated in the picture of the 26RBSSA on page 2. This option package includes: Oyster colored fiberglass, Deep tinted frameless bonded windows, Slam latches on most storage doors exterior step lighting, aluminum wheels, upgraded slide fascia and solid surface Corian® kitchen counter tops.





MURPHY BED IN THE OPEN POSITION
AND CLOSED BELOW.



FLAGSTAFF

MICRO LITE

CLEARLY THE BEST CHOICE IN A LIGHT WEIGHT TRAILER. As with every series designed by Flagstaff, a premium is placed on superior craftsmanship and unmatched value. By combining light weight floor plans with residential features you wouldn't expect to find, the Micro Lite surpasses other products in its class.

MICRO LITE



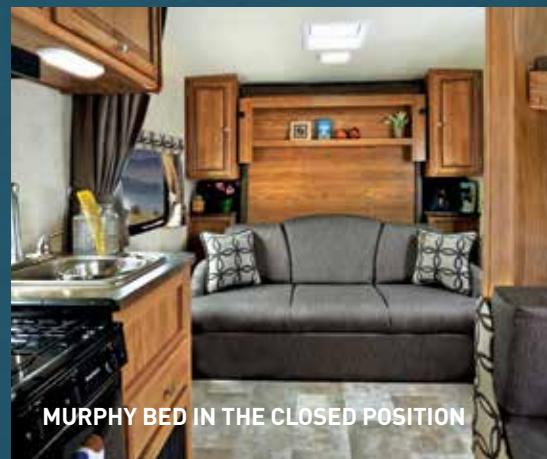
05

25KS VALENCIA WITH HICKORY

FLAGSTAFF

MICRO LITE

TOWING A TRAILER DOESN'T REQUIRE A TRUCK ANYMORE. When towing size and weight are your focus. You will find that these specially designed Micro Lite models offer flexible floor plans that provide you with more comfort and amenities that you would expect all within the towing capacity of many small SUV's and Mini Vans



MURPHY BED IN THE CLOSED POSITION



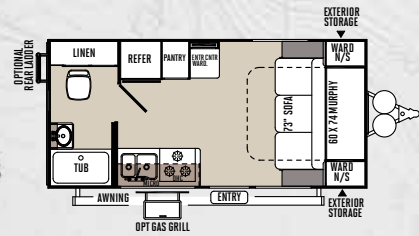
MURPHY BED IN THE OPEN POSITION



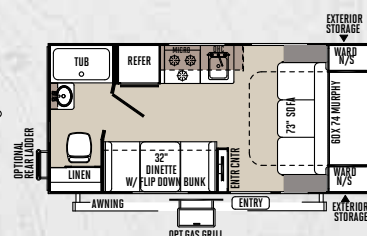
19FD ST. JAMES WITH HICKORY



Sapphire Package Exterior



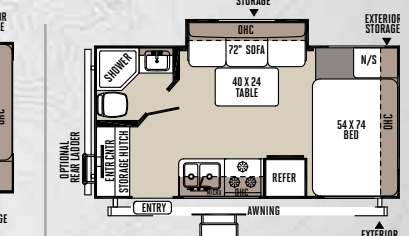
19RB



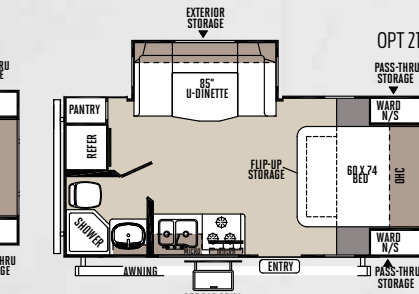
19FD



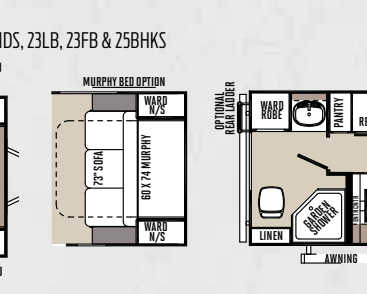
19SB



18FBRS

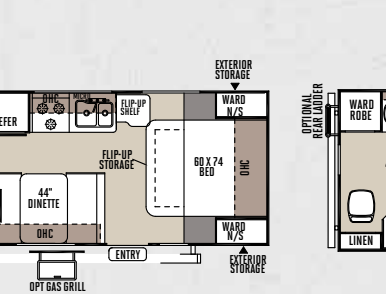


21FBRS

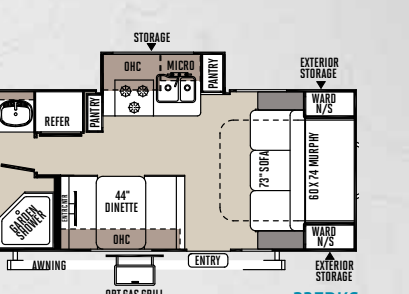


OPT 21DS, 23LB, 23FB & 25BHS

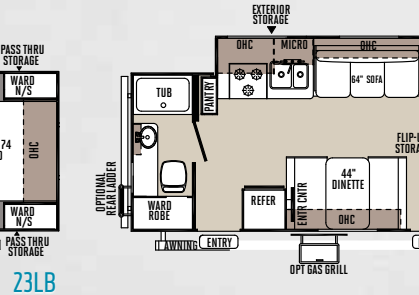
21DS



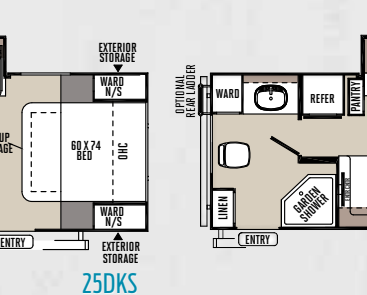
23FB



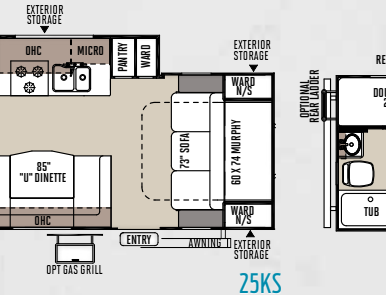
23FBKS



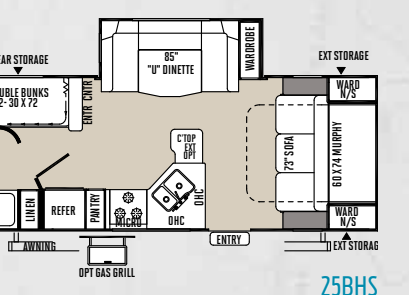
23LB



25DKS



25KS



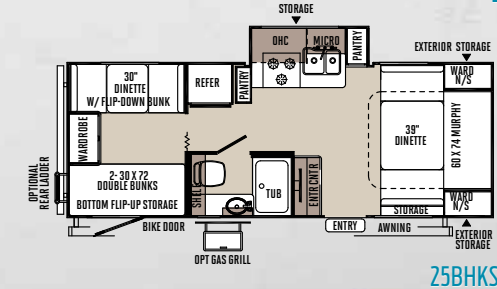
25BHS

SPECIFICATIONS.

Model number of any particular unit does not necessarily reflect the overall length of the unit itself.

MODEL	19RB	19FD	19SB	18FBRS	21DS	21FBRS	23FB	23FBKS	23LB	25DKS	25KS	25BHS	25BHSKS
BASE DRY UNIT WEIGHT	3023	3111	3062	3522	3765	3901	3756	4155	3704	4493	4310	4804	4274
BASE DRY HITCH WEIGHT	397	446	394	253	450	455	527	623	430	577	538	609	554
BASE DRY AXLE WEIGHT	2626	2665	2668	3269	3315	3446	3229	3532	3274	3916	3772	4195	3720
CARGO CAPACITY	815	776	773	1093	1035	904	1133	809	1088	1833	1833	1746	1833
LENGTH	19' 11"	19' 11"	19' 11"	20'	21' 8"	21' 8"	23' 9"	23' 9"	23' 8"	25' 8"	25' 8"	25' 10"	25' 8"
WIDTH	96"	96"	96"	96"	96"	96"	96"	96"	96"	96"	96"	96"	96"
HEIGHT W/O A/C	107"	107"	107"	109"	113"	111"	108"	108"	108"	109"	110"	117"	111"
INTERIOR HEIGHT	80"	80"	80"	80"	80"	80"	80"	80"	80"	80"	80"	80"	80"
FRESH WATER CAPACITY	36 gal	36 gal	36 gal	36 gal	36 gal	36 gal	36 gal	36 gal	36 gal	36 gal	36 gal	36 gal	36 gal
GRAY WATER CAPACITY	30 gal	30 gal	30 gal	30 gal	30 gal	30 gal	30 gal	30 gal	30 gal	30 gal	30 gal	30 gal	30 gal
BLACK WATER CAPACITY	30 gal	30 gal	30 gal	30 gal	30 gal	30 gal	30 gal	30 gal	30 gal	30 gal	30 gal	30 gal	30 gal

The Base/Dry Unit Weight listed represents the weight of one trailer with that model's standard equipment including specified Convenience Package content. The actual weight of a trailer with its specific option content is documented on the yellow weight tag attached to the unit when weighed upon completion. This weight is provided for use in comparison to the manufacturer's published towing capacity of potential tow vehicles. **Be aware that many brands choose to show unloaded weights that do not include options.**



25BHSKS



FLAGSTAFF

POPULAR FEATURES

CAMPING WITH FLAGSTAFF IS ALWAYS COMFORTABLE. Flagstaff takes pride in packing the most value possible into our Super Lite, Super V, Micro Lite and Shamrock series. While coming standard with many features, you have the flexibility to incorporate all the options you choose to fit your camping preferences.



- 1 Power Awning with Adjustable Rain Dump and LED Lighting (SL/SV: Std/Opt, ML and S: Opt.)
- 2 29" or 32" LCD w/ 5.1 Dolby Speaker System with "Bluetooth" Technology. (Opt. SL/SV: Select Models)
- 3 EZ Sleep Comfort Series HAB Sofa
- 4 EZ Sleep HAB Sofa w/ Storage Drawer
- 5 EZ Sleep HAB Sofa with Comfortable, Easy Set-up Queen Bed. (Std. SL/SV Models w/ 67" HAB Sofa) (Full Size Bed, Std. SL: 29FBSS, Opt. S: 21SS, 21SSL, 23IKSS)



1 Water Filter System
(Std. Opt.)



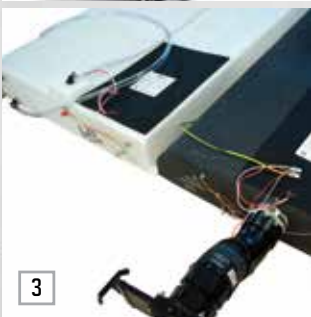
2 Solar Panel Prep (Std. All Models)
The Zamp 40 amp. portable solar panel shown is sold separately.



3 Heated holding tanks with 12 volt heat pads secured to the bottom (Opt.)



4 Outside Shower (Std.)



5 Under mount Stonecast Kitchen Sinks (Std. in Most Models)



6 Swivel Rocker Chair Fabric Matched to Sofa shown w/ Velencia Decor
(Std. 26RLWS Only. Opt. 28VBRS)



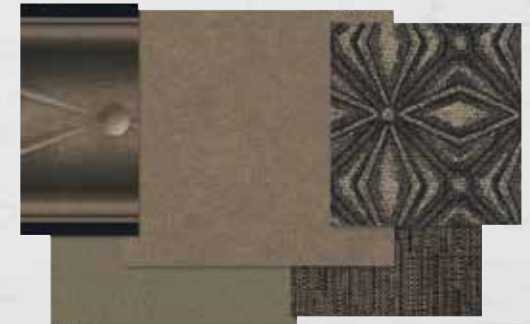
7 Swivel Rocker Recliner Fabric Matched to Sofa shown w/ Velencia Decor
(Std. 29RLWS, 27VRL Only)



Velencia



St. James



Harbor



Hickory Décor Standard



Cherry Décor Option



Standard Floor Covering



Optional Floor Covering

CONSTRUCTION

THE DETAILS ARE WHAT MAKE ALL THE DIFFERENCE.

Flagstaff takes pride in constructing the very best products possible in each price point. From our entry level units to our top of the line products, no short cuts are taken to achieve excellence.

From the all-steel I-beams to the residential interior amenities to the vacuum-bonded exteriors, Flagstaff products are quality built from the ground-up.



- 1 Glued and screwed wood cabinetry
- 2 Aluminum dinette frames for added strength and weight savings
- 3 Vacuum-bonded floor with 16" on center aluminum floor joists (*Std. Super Lite, select Shamrock models*)
- 4 Extra large dinette storage doors and full extension metal drawer guides in the kitchen
- 5 Dexter Torflex Axles:
 - Independent wheel suspension and self-damping action
 - Rubber cushioning eliminates metal-to-metal contact.
 - Forged torsion arm for maximum strength

Models are also equipped with E-Z Lube® System and Nev-R-Adjust® Brakes.
- 6 Enclosed underbelly protects trailer components as well as increasing aerodynamics (*Super Lite models only*)
- 7 Aluminum Frame Construction with fiberglass exterior shown with Emerald Package and deluxe graphics

ROOF CONSTRUCTION



Vacuum-bonded radius roof with vaulted ceiling providing superior insulation and more interior height.



4" thick roof with built in insulated A/C ducts



Built strong to enable you to conveniently perform periodic roof maintenance.

WALL STRENGTH



Structurally engineered materials makes our vacuum-bonded walls some of the strongest in the industry.

VACUUM-BONDED LAMINATED CONSTRUCTION



Flagstaff is one of the few manufacturers that is a fully 6 sided vacuum-bonded trailer. Our walls, floors, roof, fronts and backs are all aluminum framed and vacuum-bonded to ensure a light weight strong structural trailer.

FLAGSTAFF

SHAMROCK

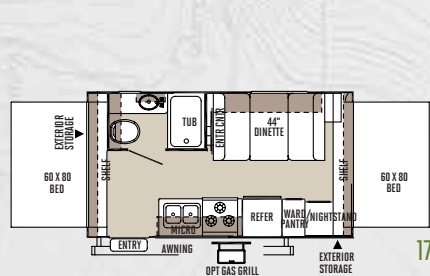
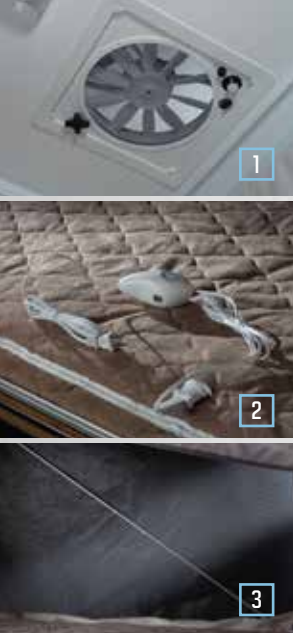
YOU'RE IN LUCK! WE HAVE A TRAILER JUST FOR YOU. Whether you are interested in the expanded interior space provided by the spacious drop down bunks with heated innerspring mattresses or the ability to bring an ATV along with the feel of a traditional trailer, the Flagstaff Shamrock will deliver with the quality and amenities you expect. Flagstaff brings the necessities of residential living on the campsite.



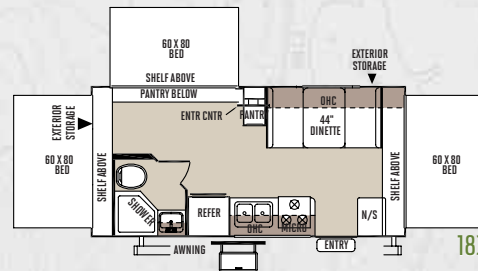
- 1 Fantastic Fan with Cover
(2 w/ Shamrock Models)
- 2 Heated Innerspring
Mattresses
(Std. Opt. on ML & S)
- 3 Roo Bunk Cables —
No Support Poles Needed
(Std. all Shamrock Models)



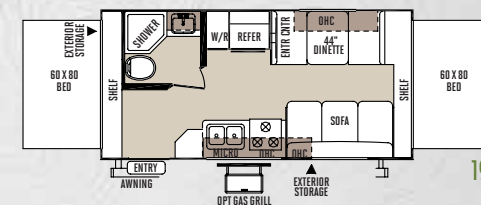
233S VALENCIA WITH CHERRY



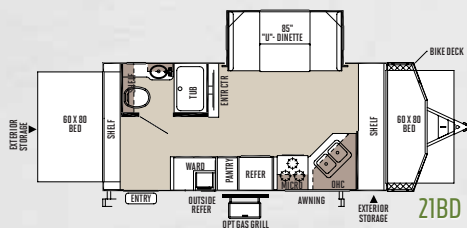
17



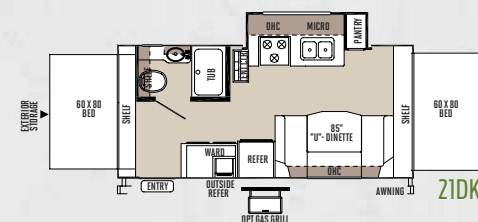
183



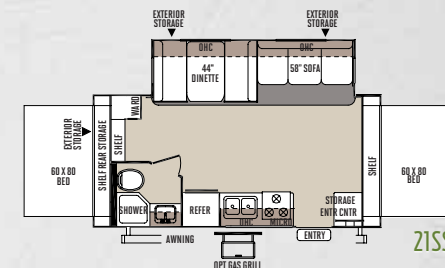
19



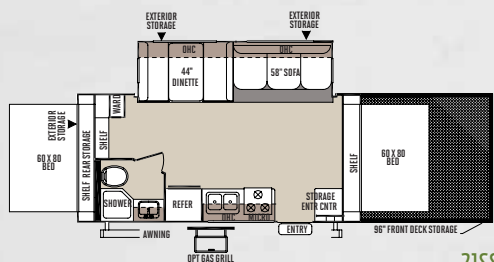
21BD



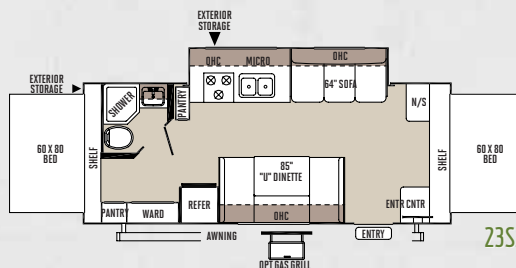
21DK



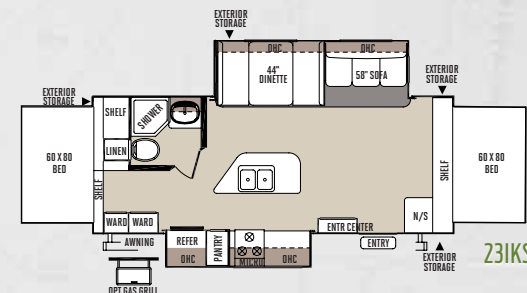
21SS



21SSL



23SS



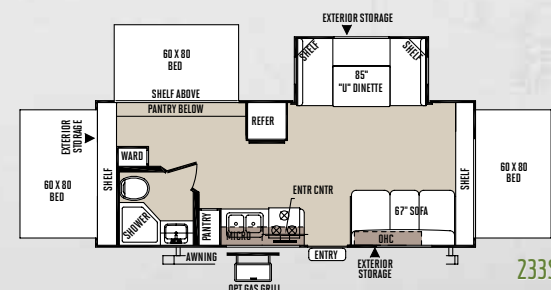
23IKSS

SPECIFICATIONS.

Model number of any particular unit does not necessarily reflect the overall length of the unit itself.

MODEL	17	183	19	21BD	21DK	21SS	23IKSS	23SS	23SS	21SSL
BASE DRY UNIT WEIGHT	3116	3653	3648	4647	4008	4454	5045	4512	4441	5117
BASE DRY HITCH WEIGHT	354	420	446	678	616	674	558	602	458	410
BASE DRY AXLE WEIGHT	2762	3233	3164	3969	3392	3780	4487	3910	3983	4707
CARGO CAPACITY	1037	1428	1535	1564	1307	1503	1512	1527	1498	2592
LENGTH	18' 8"	20' 8"	20' 8"	23' 6"	21' 8"	21' 9"	24' 8"	24' 8"	24' 8"	31' 1"
TRAILER LENGTH (OPEN)	23' 2"	25' 1"	25' 1"	27' 6"	26' 2"	26' 2"	29' 2"	29' 2"	29' 2"	35' 2"
WIDTH	96"	96"	96"	96"	96"	96"	96"	96"	96"	96"
HEIGHT W/O A/C	108"	110"	108"	115"	108"	115"	115"	110"	110"	116"
INTERIOR HEIGHT	80"	80"	80"	80"	80"	80"	80"	80"	80"	80"
FRESH WATER CAPACITY	36 gal	36 gal	36 gal	36 gal	36 gal	36 gal	36 gal	36 gal	36 gal	36 gal
GRAY WATER CAPACITY	30 gal	30 gal	30 gal	30 gal	30 gal	30 gal	30 gal	30 gal	30 gal	30 gal
BLACK WATER CAPACITY	30 gal	30 gal	30 gal	30 gal	30 gal	30 gal	30 gal	30 gal	30 gal	30 gal

The Base/Dry Unit Weight listed represents the weight of one trailer with that model's standard equipment including specified Convenience Package content. The actual weight of a trailer with its specific option content is documented on the yellow weight tag attached to the unit when weighed upon completion. This weight is provided for use in comparison to the manufacturer's published towing capacity of potential tow vehicles. **Be aware that many brands choose to show unloaded weights that do not include options.**



233S



Sapphire Package Exterior

21SSL w/ 8' X 8" Storage Deck

STANDARDS & OPTIONS

MODELS	SL/SV	ML	S
INTERIOR FEATURES			
Hickory Interior	S	S	S
Cherry (w/ Solid Cherry Hand Rubbed Cabinet Doors) Interior	O	O	O
Upgraded Decorative Wood Slide Out Fascia	EP	--	--
Solid Wood and Raised Panel Doors and Drawers	S	S	S
Screwed and Glued Wood Cabinetry	S	S	S
Residential FSLI Extension Metal Drawer Guides in Kitchen	S	S	S
Flooring: Carpet and an Engineered Mold and Mildew Resistant Floor Covering (21SS, 21SSL, 23IKSS, 233S Only, All SL Models)	S	--	S*
Engineered Mold and Mildew Resistant Floor Covering	S	S	S*
Minimum Carpet	O	--	--
Ducted Furnace	--	S	S
Floor Ducted Furnace	S	--	--
13,500 BTU Ducted Air (N/A 19RB, 19FD, 19SB, 18FBRS, 17, 183, 19)	SO	SO*	SO*
15,000 BTU A/C	O	O	O
13,500 Roof A/C (Std. 18FBRS, , 17, 183, 19) (Opt. 19RB, 19FD, 19SB)	--	SO*	SO*
Carbon Monoxide Detector	SO	SO	SO
12 Volt Power Plug Hook-up	S	S	S
CSA	O	O	O
Monitor Panel Switch Station	S	S	S
55 Amp Converter With Charger	S	S	S
Battery Disconnect Switch	S	S	S
Solar Panel Prep	S	S	S
LED 12 Volt Interior Lighting	S	S	S
Directional Reading Lights on Most Sofa Slides	S	S	S
Bunk Fan/Light Combination with Each Bed	--	--	S
Mounted 24" LCD TV (Opt. 19RB, 19FD, 19SB)	SO	SO*	SO
Bedroom Mounted 24" LCD TV (Opt. All SL Models Except 23FBDS) (ML: 25BHS Bunk Room) (S: 23IKSS, 23SS, 233S Only)	O*	--	O*
29" LCD TV With 5.1 Digital Dolby Surround Sound Speaker System	O*	--	--
32" LCD TV w/ 5.1 Digital Dolby Surround Sound Speaker System (Std. 27RLWS Opt. 23FBDS, 26RBSSA, 27BESS, 27BEWS, 29RLWS, 29FBSS, 29IKTS)	O*/S*	--	--

MODELS	SL/SV	ML	S
Digital AM/FM/CD/DVD w/ Remote	S	S	S
MP3 Player Hook-Up	S	S	S
Decorative Valances	--	S	S
Designer Valances w/ Lambert Arms	S	--	--
Mini Blinds	S	--	--
Night Shades	--	O	O
Day/Night Shades	O	--	--
Swivel Rocker Chairs Fabric Matched to Sofa (Std. 26RLWS Only)	S*	--	--
Swivel Rocker Recliners Fabric Matched to Sofa (Std. 29RLWS, 27VRL Only) (Opt. 28VRBS)	S*	--	--
End Table with Attached Lamp (Std. 26RLWS, 29RLWS)	S*	--	--
EZ Sleep Hide-A-Bed Sofa w/ Storage (Std. 26RLWS, 26RBSSA, 26FKWS, 26VKS, 27BESS, 27BEWS, 27RLWS, 28VRBS, 29RLWS, 29FBSS, 29IKTS) (Opt. 21SS/21SSL, 23IKSS)	S*	--	O*
Aluminum Bed and Dinette Frames	S	S	S
44" Family Dinette (Opt. 25BHS) (N/A 21DS, 25BHS, 23FBDS, 27BESS, 27BEWS, 27RLWS, 28VRBS, 29FBSS, 21DK, 233S)	S*	O*/S*	S*
48" X 84" Spacious King-U-Style Dinette (Std. 21DS, 25BHS, 23FBDS, 27BESS, 27BEWS, 27RLWS, 28VRBS, 29FBSS, 21BD, 21DK, 233S)	S*	S*	S*
Free Standing High Pressure Laminated Table with Swing Level Legs (Swing Level Legs N/A 19RB, 19FD, 19SB, 18FBRS, 21FBRS, 23FB, 23FBRS, 23LB, 25DKS, 25BHS)	S	S*	S
Free Standing Table and Chairs (23FBDS, 26RLWS, 26FKWS, 26RBSSA, 27BESS, 27BEWS, 27RLWS, 27VRL, 28VRBS, 29RLWS, 29FBSS, 29IKTS Only)	O*	--	--
Stainless Steel Appliances	O	O	O
Raised Refrigerator Panels	O	O	O
Single Door Auto Gas/Elec. Refrigerator (19RB, 19FD, 19SB, 17, 183, 19 Only)	--	S*	S*
Double Door Auto Gas/Elec. Large Refrigerator (N/A 19RB, 19FD, 19SB)	S	S*	S
3 Burner High Output Gas Range w/ Glass Stove Top Cover	S	S	S
Gas Oven (Required 21DK, 23IKSS, 23SS, 23FBRS, 25DKS, 25KS, 25BHS) (Included w/ OPG: 19RB, 19FD, 19SB Only)	SO	O*	O*
Microwave Oven	SO	SO	SO

MODELS	SL/SV	ML	S
Solid Surface Corian Counter Tops in Kitchen	EP	--	--
Under Mount Double Bowl Stonecast Kitchen Sink w/ Residential Style Faucet (N/A 19FD, 19SB)	S	S*	S
Residential One-Piece Sink Cover	S	S	S
Cutting Board	S	S	S
Kitchen Cabinet Mounted Fold Down Shelf (23FB, 23LB Only)	--	S*	--
Counter Top Extension (Available 26RLWS, 27BESS, 27BEWS, 27RLWS, 27VRL, 28VRBS, 29RLWS, 29FBSS, 25BHS Only)	O*	O*	--
Water-Pur Filtration System	SO	SO	SO
Tub Surround	S	S	S
Bathroom Skylight	S	S	S
110 DSI Gas/Electric Six Gallon "Quick Recovery" Water Heater	SO	SO	SO
Water Heater By-Pass Kit	S	S	S
Foot Flush Toilets	S	S	S
Maxxair® Ventilation Fan and Vent Cover	SO	SO	SO
Extra Maxxair® Ventilation Fan and Vent Cover	O	O	S
Murphy Bed w/ Under Sofa Storage System and Outside Access for Unmatched Floor Plan Flexibility (Std. 23FBDS, 23FBRS, 25KS, 25BHS, 25BHS, 19RB, 19FD) (Opt. 21DS, 23FB, 23LB)	S*	O*/S*	--
Murphy Bed w/ Dinette for Unmatched Floor Plan Flexibility (Std. 25BHS)	--	S*	--
Heated Mattress	O	SO	SO
Serta Upgrade Mattress All Walk Around Beds	S	--	--

EXTERIOR FEATURES

Fully Laminated Aluminum Frame (Floor, Sidewall, & Roof)	S	S	S
Insulation Factors R-7 Side Wall, R-12 Floor and R-14 Ceiling	S	S	S
Radius Roofs w/ Interior Vaulted Ceilings	S	S*	S
Vinyl / Rubber Composite Roofing Membrane	S	S	S
T V Antenna w/ Cable & Satellite Hook-Up	S	S*	S
Laminated Oyster Colored Fiberglass Sidewalls	EP	SP	SP
Laminated Fiberglass Sidewalls	S	S	S
Distinctive Black Exterior Trim	EP	S	S
Electric Slide-Out (All Slide Out Models)	S	S	S
Lower Front Diamond Plate Panel	S	S	--
Decorative Frame Skirting (21DS, 25BHS Only) (N/A 17)	S	S*	S*

SL/SV = SUPER LITE/SUPER V ML = MICRO LITE S = SHAMROCK

S = STANDARD SO = STANDARD OPTION O = OPTIONAL -- NOT AVAILABLE OP = OPTIONAL PACKAGE CP = CONVENIENCE PACKAGE EP = EMERALD PACKAGE SP = SAPPHIRE PACKAGE * = SELECTED MODELS



MODELS

SL/SV ML S

Easy to Reach Lockable Bed Latch System	--	--	S
Bed Cable System (No Poles)	--	--	S
Rear Ladder (N/A 21DS)	0	0	--
Power Awning With Adjustable Rain Dump and LED Lighting	SO	0	0
Awning (Opt: 19RB, 19FD, 19SB)	--	SO*	SO
Awning Slide Topper	0	0	0
Entrance/Screen Door	--	S	S
30" Primary Entrance/Screen Door	S	--	--
Large Assist Grab Handles	SO	S	S
Lighted Entry Step and Scare Light	EP	--	--
Radius Corner Windows and Doors	S	S	S
Windows w/ Tinted Safety Glass	SO	SO	SO
Tinted Bonded Frameless Windows	EP	SP	SP
Thermopane Windows	0	0	0
Large Dinette Picture Window (N/A 19RB, 19FD, 25BHS)	S	S*	S
Outside Grill Prep	S	S	S
Outside Gas Grill and Worktable (Opt: 19RB, 19FD, 19SB)	SO	SO*	0
Outside Speakers	S	S	S
Outside Shower	S	S	S
1/2 Sliding Storage Tray (N/A 19RB, 19FD, 19SB, 23FB and All Models w/ Murphy Bed) (Opt: 23FBDS, 17, 183, 19, 21SS, 21SSL, 23SS, 23IKSS)	0*	0*	0*
Outside Antifreeze Stations	S	S	S
Slam Latches on Storage Doors	EP	--	--
Two-20 Lb Gas Bottles (19RB, 19FD, 19SB Only)	--	S*	S
Two-30 Lb Gas Bottles (N/A 19RB, 19FD, 19SB Only)	S	S*	--
Enclosed Gas Bottles w/ Storage Door Access (26VFKS, 27VRL, 28VRBS Only)	S*	--	--
Molded Bottle Cover (N/A 26VFKS, 27VRL, 28VRBS)	S*	S	S
Surface Coated Steel I-Beam Frame (N/A 19RB, 19FD, 19SB)	S	S*	S
8' X 8' Front Storage Deck: 1300 LBS. Max Capacity (21SSL Only)	--	--	S*
2' X 8' Front Storage Deck w/ Enclosed Storage Compartment: 350 LBS. Max Capacity (21BD Only)	--	--	S*
Fuel Station with 18 Gallon Capacity (Gasoline Only)(Opt: 21SSL Only)	--	--	0
Toylok Mounted Locking System (21BD, 21SSL Only)	--	--	S*
Power Tongue Jack	0	0	0
Stabilizer Jacks	S	S	S
Power Stabilizer Jacks	0	--	--
Torsion Axle, Rubber-Ryde Suspension	S	S	S

MODELS

SL/SV ML S

Easy Lube Axles and Nev-R Adjust Brakes	S	S	S
Radial Tires w/ Nitro Fill	S	S	S
Double or Triple Entry Step	S	S	S
Off Road Package (Includes: 15" Off Road Tires and Aluminum Wheels) (21SSL Only)	--	--	S*
Chrome-look Wheel Covers	0	0	0
Aluminum Wheels	0/EP	0/SP	0/SP
Spare Tire Carrier & Cover	SO	SO	0
Electronically Controlled Heated Holding Tanks	0	0	0
Enclosed Holding Tanks	S	--	--
Black Water Flush	S	S	S

EMERALD PACKAGE INCLUDES:

0 -- --

Oyster Colored Fiberglass
 Deep Tinted Frameless Bonded Windows
 Slam Latches on Storage Doors
 Exterior Step and "Scare" Light
 Aluminum Wheels
 Solid Surface Corian Kitchen Counter top

SAPPHIRE PACKAGE INCLUDES:

-- 0 0

Oyster Colored Fiberglass
 Deep Tinted Frameless Bonded Windows
 Aluminum Wheels

CONVENIENCE PKG. B INCLUDES

SO -- --

13,500 BTU Ducted Air
 Mounted 24" LCD TV w/ AM/FM Stereo, CD, DVD Player
 Gas Oven
 Microwave Oven
 110 DSI Gas/Electric Six Gallon "Quick Recovery Water Heater
 Power Awning w/ LED Lighting
 Large Assist Grab Handle
 Windows w/ Tinted Safety Glass
 Outside Grill and Worktable
 Outside Speakers
 Spare Tire Carrier & Cover

MODELS

SL/SV ML S

OPTION PKG. G (19RB, 19FD, 19SB ONLY) INCLUDES:

-- SO* --

Gas Oven
 Microwave Oven
 110 DSI Gas/Electric Six Gallon "Quick Recovery" Water Heater
 TV Antenna w/ Cable & Satellite Hook-up
 Spare Tire Carrier & Cover
 Outside Speakers

CONVENIENCE PKG. A (N/A 19RB, 19FD, 19SB) INCLUDES:

-- SO* --

13,500 BTU Roof A/C (18FBRS Only)
 13,500 BTU Ducted Air (All Except 18FBRS)
 Mounted 24" LCD TV w/ AM/FM Stereo, CD, DVD Player
 Microwave Oven
 110 DSI Gas/Electric Six Gallon "Quick Recovery" Water Heater
 Water Heater
 Awning
 Windows w/ Tinted Safety Glass
 Outside Grill and Worktable
 Outside Speakers
 Spare Tire Carrier & Cover

CONVENIENCE PACKAGE C INCLUDES:

-- -- SO

13,500 BTU Roof A/C (17, 183, 19)
 13,500 BTU Ducted Air (21DK, 21SS, 21SSL, 23SS, 23IKSS, 233S)
 Mounted 24" LCD TV w/ TV Antenna & Cable Hook-up
 Microwave Oven
 110 DSI Gas/Electric Six Gallon "Quick Recovery" Water Heater
 Water Heater
 Awning
 Windows w/ Tinted Safety Glass
 Outside Speakers



PRE-DELIVERY INSPECTION FACILITY

20,000 square feet of quality assurance. The bare essentials for a premium product. This state-of-the-art facility gives immediate daily feedback to production for quality assurance in every unit built.



Forest River, Inc. encourages our customers to purchase their Forest River products from a local dealership whenever possible for the following reasons:

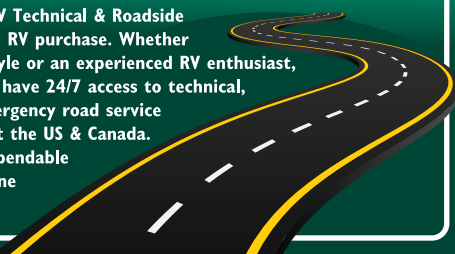
It is the goal of Forest River, Inc. that all of our RV owners fully enjoy the RV experience and that customer satisfaction meets or exceeds their expectations!

- 1) Forest River, Inc. dealers are independently owned and operated businesses so priority service and scheduling is at their discretion and is often provided to customers that purchased their unit at that dealership.
- 2) Purchasing locally allows customers to establish meaningful relationships with a dealer, enhancing the RV experience through assistance with product questions, user tips or RV regulations for your state or country, and much more!
- 3) Canadian customers must meet requirements to bring an RV purchased out of the country to their home. These requirements may involve additional inspections and certifications, taxes and fees. Your local Canadian Dealer is a professional at meeting these requirements.
- 4) Scheduling timely warranty repairs and adjustments through a local dealership provides far greater flexibility and convenience to you, the customer!

24/7 EMERGENCY ROADSIDE ASSISTANCE

For a worry-free ownership experience Forest River includes one year of Coach-Net RV Technical & Roadside Assistance with each RV purchase. Whether new to the RV lifestyle or an experienced RV enthusiast, Forest River owners have 24/7 access to technical, operational and emergency road service coverage throughout the US & Canada. Coach-Net's fast, dependable service is just a phone call away.

Coach-Net®
RV Technical & Roadside Assistance



MAC, CLASSIC, HIGH WALL & HARD SIDE CAMPERS



V-LITE, CLASSIC SUPER LITE TT & FW

FLAGSTAFF

WARRANTY

FOR DETAILS ON FLAGSTAFF'S COMPLETE WARRANTY PROGRAM, SEE YOUR FLAGSTAFF DEALER. When it comes to backing products with the same quality and commitment it has when it begins the manufacturing process, the only name you have to remember when you're looking for a recreational vehicle is Flagstaff. Flagstaff offers the following additional limited warranties to the original purchasers. Consult written warranty for details.

1. Twelve-year vinyl roof warranty, 2. Two-year fiberglass warranty, 3. Five-year axle warranty, 4. Five-year tent warranty, 5. One-year bumper to bumper warranty, 6. Available second-year warranty

YOUR FLAGSTAFF DEALER

201 West Elm Millersburg, IN 46543 | www.forestriverinc.com/Flagstaff
574.642.2640



Learn More
Scan this barcode using a QR Reader on your smart phone to learn more about Forest River.



A Berkshire Hathaway company.

All specifications contained herein are based on the latest product information at time of printing. Forest River reserves the right to make changes in colors, materials, equipment and specifications at any time without notice and assumes no responsibility for any errors in this brochure. Litho. U.S.A W: 2015.02.12