

# XLR THUNDERBOLT



XLR  
THUNDERBOLT

**X**TENDED **L**IVING AND **R**ECREATION

375AMP STOUT DECOR



# DYNAMIC

## *Expect More*

We are committed to providing you with the best toy hauler in the market today. Every single Thunderbolt floor plan is carefully designed and engineered for functionality and feature content. The latest materials and complementary design finishes are implemented throughout every fifth wheel. The 375AMP (left) exhibits this commitment with a highly functional kitchen layout and angled entertainment center so that no matter where you are on the main floor, you won't miss a minute of the action.

The 415AMP galley (below) showcases the latest trends including solid hardwood cabinet doors, residential appliances, and contrasting cabinet finishes.

*The 415AMP kitchen is open for entertaining and boasts a huge countertop workstation, residential size microwave, island sink, and optional 110V residential Whirlpool refrigerator.*



*Bathrooms feature plenty of storage, a medicine cabinet, and a full size shower with triple glass door (select models).*

**XLR**  
THUNDERBOLT

401AMP STOUT DECOR





*Combinations of wood styling and bead board panels in the entertainment center combine to add to the residential quality you expect in an XLR. Enjoy the large HD TV with soundbar for the latest in streaming capabilities. The electric fireplace takes the edge off of a cool night without firing up the furnace.*

*The 401AMP surpasses all expectations with generous countertop space, wrap around seating, abundant storage, a 12 cu. ft. refer, and full view sliding glass door...all standard!*



*60/40 Stainless steel undermount sink with industrial style pull down faucet accommodates large pots for preparing meals away from home. Standard solid surface countertops stand the test of time.*

*Standard living room recliner seating customized to each model invites you and your guests to kick back and chill out. Grab a book, the TV remote, or a well deserved nap.*



## FIRST CLASS

***Because you've earned it***

You work hard, you play hard too...you deserve nothing short of the best. Thunderbolt owners are discerning buyers. Most of them have considered the alternatives and chosen, not settled on, a Thunderbolt fifth wheel.

Our interior designers work diligently to provide you with warmer interior lighting, today's contemporary fabrics, and stylish decor features. Our focus has always been on designing a fifth wheel you'll be proud to own.



*You can fit your entire wardrobe into this cavernous front closet. Full length mirrors take the guess work out of looking your best (select models).*



# EXCLUSIVE

## *In a class all by itself*

The 385AMP is an innovative and exclusive floor plan. This gorgeous layout is the only front living room in the industry that offers you the ability to transport your toys. We've conveniently left enough space in the rear bedroom to bring along a golf cart, ATV, or single motorcycle.

No toys...no problem. The rear master suite's french doors open up to a private porch where you can enjoy your coffee in the morning while you overlook the lake.

**XLR**  
THUNDERBOLT



*During the day, this room doubles as a lounge area or perfect spot for the family pets to hang out. Remove the cushions and bolsters before lowering your King bed down for the night.*



*At the end of the day, the custom designed murphy bed easily converts into the King master bedroom complete with his & hers nightstands.*

*This front living room complete with theater seating (not shown) is sure to be the envy of everyone around you.*



*The amount of storage in this bathroom is amazing...massive drawers and a generous wardrobe closet are surrounded by huge overhead cabinets. The premium shower surround and glass doors enhance the elegance of this floorplan.*



*The 385AMP kitchen includes functional drawer and cabinet placement, residential microwave, and a 21 cu. ft. residential refrigerator with 1,000W inverter.*

## 385AMP

This large U-shaped kitchen has more than enough space. When guests arrive, the tiered countertop is perfect for serving snacks and drinks. The flow of the 385AMP is perfect for large groups because while guests are in the kitchen, others can still be part of the conversation in the raised front living room.





*The Thunderbolt bedroom is a perfect retreat with warm earth tones, and a cool gel, memory foam mattress. King beds (select models) let you recharge for whatever tomorrow brings.*

# CONNECT

## ***Thunderbolt puts you in control.***

Whether you just want to connect with nature, or stay in touch with friends and family back home, we've got you covered.

If your goal is to find a spot away from it all and relax, our amenities allow you to be fully self-sufficient while you "unplug."

Or, if you're one who can't leave home without it, our electronics packages, technology features, and extra gadgets will keep you connected.

## **DECOR**



**GRAPHITE**



**DESERT**



**MIDNIGHT**



**STOUT**





The pop-up charging station is recessed into your countertop. It's ready at a moment's notice to charge your smartphone or fire up the blender for a chocolate malt.



The custom entertainment centers offer you the latest in connectivity with specific locations designed for your personal audio/video equipment. Our soundbar includes bluetooth audio and streaming capabilities for the living room. Additional stereo systems control the exterior speakers and rear living zones.

# XLR THUNDERBOLT



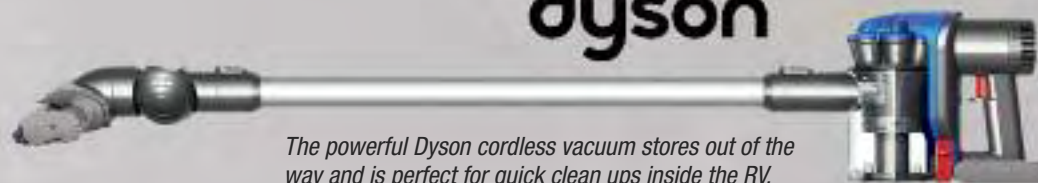
The optional Level Up hydraulic auto leveling system is powerful and easy to use. In less than a minute, your Thunderbolt is level and ready to use.

## GARMIN.



This optional Garmin RV 760PRO GPS and Trip Planner includes an easy to read 7" display, wireless back-up camera, and syncs with a smart phone via Bluetooth.

## dyson



The powerful Dyson cordless vacuum stores out of the way and is perfect for quick clean ups inside the RV.



# FLEXIBILITY

***No, we can't put our feet behind our head  
but our multi-zone living is just as impressive.***

XLR Thunderbolts offer today's buyers something traditional fifth wheels can't - flexibility. We don't restrict you to one particular use. The rear living space of your Thunderbolt could be a garage, a bunkhouse, dining room, game room, man cave, kennel, mobile office, or anything else you can come up with.

*Game nights after dinner or playing cards to pass the time while the rainstorm passes...whatever you need it for, Thunderbolt adapts.*



*Our additional rear half bath means your sleep isn't interrupted by late night bathroom visits (select models).*



*Kids love the extra space you can create just for them. Our queen "bunkbeds" are even large enough for grandma and grandpa to come along.*

***BRING IT!*** Our interior bed height is maximized so you can load your off road vehicles, motorcycles, dirt bikes, golf cart, or whatever else you like to ride.



*The optional cargo bath upgrade (select models) converts the half bath into a second full bathroom combo.*



*Optional VIP Party Deck includes aluminum rails, awning, and his/hers XLR zero-gravity chairs.*



*The optional Three Season Patio Door lets air in, keeps pests out, and also helps keep the air conditioning or heat inside where it belongs.*



*The doors quickly swing out over the ramp to make loading and unloading a breeze.*



*Whether it's tailgating, eating dinner outside, or just enjoying some quiet time, the VIP party deck provides endless possibilities and sets up in just minutes.*

**XLR**  
THUNDERBOLT



1. Gel Coat Fiberglass Radius Cap
2. Molded Hitch Pin Cover
3. Optional Extreme Pkg Foil Insulation
4. 7,000 lb EZ Lube Dexter Axles
5. 16" E-Rated Tires
6. NitroFill Radial Tires
7. 5/8" Plywood Floor Decking
8. Fully Enclosed/Heated Underbelly
9. Holding Tanks Secured by Frame Cradle
10. 3" Wood Floor Joists w/ Fiberglass Insulation
11. Slam Latch Compartment Doors
12. Ultra View Frameless Windows
13. High Gloss Fiberglass Exterior
14. Laminated & Insulated Slideout End Walls/Roof
15. Beavertail Storage Compartment (AMP models)
16. 1" Garage Floor Decking w/ Rubberized Flooring
17. 8 Ft. Easy Lift, 3,000 lb Ramp Door
18. One Piece Rubber Roof
19. 15,000 BTU Air Conditioner
20. Rear Electric Stabilizer Jacks
21. Steel Anchor Plates for 5,000 lb Tie Downs
22. High Efficiency A/C Duct System
23. Vacuum Bonded Sidewall w/ Block Foam Insulation
24. 3/8" Roof Decking
25. Fiberglass Roof Insulation
26. Radius Metal Roof Transition
27. Attic Vents
28. 102" Widebody Construction
29. Full Walk On Roof
30. 2" Aluminum Framed Sidewalls
31. Hydraulic Wide Stance Front Landing Gear

*\*Foil Insulation is included in the Extreme Weather Package option.*

## XLR THUNDERBOLT



*The optional energy management system with three air conditioners efficiently manages your usage on those scorching summer days.*



*Equa Flex Suspension creates a smoother ride...for you AND your Thunderbolt.*



*Frameless tinted safety glass windows provide a sleek design and withstand exposure to the elements over time.*



*The industry's first 5,000 lb tie down system are steel reinforced to insure your cargo stays where it should.*



*Tread Lite "Maintenance Free" aluminum steps make getting in and out a breeze.*



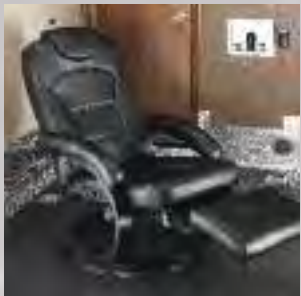
Optional 110V Whirlpool Residential Refrigerator comes with a 1,000W dedicated inverter.



Optional keyless entry lets you customize your own passcode.



Room darkening roller shades insure privacy and won't collect dust.



Optional euro reclining chairs are great for additional seating in the main or rear living rooms.

## INTERIOR STANDARDS

- Professionally Designed Interiors
- Custom Hardwood Cognac Maple Cabinets with Raised Panel Doors
- LG Solid Surface Countertops
- Large Residential Microwave (Select models)
- Stainless Steel 60/40 Deep Bowl Kitchen Sink
- Crown Molding Throughout
- Night Shades
- Attic Ventilation System
- 7'6" Slide Room Height
- Living Room LCD HDTV
- Multi Zone Entertainment
- Sony Sound Bar with Bluetooth, WIFI, Subwoofer
- Zero Wall Recliner Theater Seating
- 15K BTU Air Conditioner
- Bathroom Fantastic Fan
- LED Shower Light
- 12 Gallon Gas/Electric/DSI Water Heater
- Washer/Dryer Prep
- Retractable Hid-N-Screen Wall (N/A 385AMP)
- Heated Garage
- Dovetail Storage Box (AMP Series only)
- 5/8" Tongue and Groove Plywood Floor

## EXTERIOR STANDARDS

- Front Hydraulic Landing Gear
- Vacuum-Bonded Aluminum Framed Construction
- Gel Coated Sidewalls
- Gel Coat Radius Front Cap with LED Lights
- Exterior LED Brake Lights and Marker Lights
- Reverse Activated Rear LED Flood Lights
- 7,000 lb. E-Z Lube® Dexter Axles
- NitroFill™ Radial Tires
- Convenience Center for Utilities
- 50 AMP Service
- 100 AMP Converter
- Exclusive Fiberglass Hitch Pin Cover
- 5,000 lb. Flush Mount Steel Reinforced Tie Downs
- Generator Ready with Fuel Tank – 18 Gal.
- Ultra View Frameless Windows
- Electric Awning with LED Lights
- Friction Hinge Entry Doors
- Slam Latch Baggage Doors
- Premium Ramp Door Compression Keyed Locks
- Bolted to Frame Fuel Tanks
- Collapsible Exterior Ladder
- Large Assist Handles on all Entry Doors
- Hydraulic Flush-Floor Main Slide
- Black Laminated Slide-Out End Walls

- Satellite Prep
- Hot/Cold Outside Shower
- Enclosed Termination Valves (AMP models)
- 30# LP Tanks

## MANDATORY OPTIONS

### ■ Accelerator Package:

Stainless Steel Appliances, Tread Lite Aluminum Steps, Hydraulic Auto Level System, Solar Charger Input, Friction Hinge Entry Doors, Spring Spout Kitchen Faucet, Equa-Flex Suspension Enhancement, Roller Shades (Bedroom, Living Room)

### ■ Lightning Package:

Front Cap LED Strip Lighting, 7,000 lb. Dexter Axles, 7'6" Main Slide Height, Wide Stance Frame Upgrade, Spare Tire, Stainless Steel Backsplash, Satellite Prep on Roof, Dyson Cordless Vacuum, Gel Memory Foam Mattress

- 5.5 Onan CARB EVAP Generator
- Mobile Fuel Station with Fuel Tank (30 gal.)
- Electric Bed with Pass-through Dinette (N/A on 385AMP)

## OPTIONAL EQUIPMENT

### ■ Extreme Weather Package:

Dual Pane Windows, 12V Heated Holding Tanks, Ducted Heat and Radiant Roof/Floor/Slide Out Floor Insulation (R-38 @ 80F Radiant Technology)

### ■ Intensity Package:

- Black Painted Cap, Grey Gel-Coated Sidewalls, Upgraded Graphics
- Garmin RV 760 with Back-up Camera
- Keyless Main Entry Door
- 32" Flat Screen TV (Bedroom, Garage)
- Blu Ray Player
- 110 Volt Whirlpool Residential Refrigerator with Inverter
- Convection Microwave
- 12 Volt/160 Watt Solar Kit
- Second Air Conditioner (Bedroom or Cargo Area)
- Third Air Conditioner with Energy Management System (N/A 385AMP)
- Eurostyle Chair
- Three Season Door IPO Hid-N-Screen (N/A 385AMP)
- Multi-function Wireless Remote
- Plush, Removable Cargo Carpet Kit
- VIP Party Deck with Awning and (2) Zero Gravity Chairs
- Cargo Shower Upgrade (415AMP)
- Second Power Awning with LED Lights
- Custom Full Body Paint (See page 15)
- Tuson Electronic Sway Control



Standard convenience center keeps all your utilities in one place (AMP models only).



Get "off-the-grid" with this solar charger input.

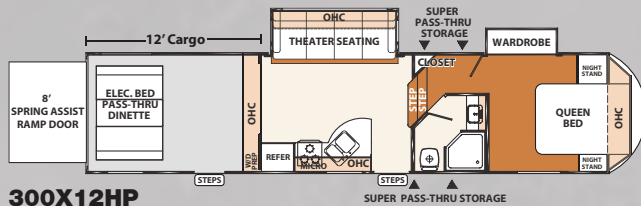


Beavertail storage bin standard in AMP models only.

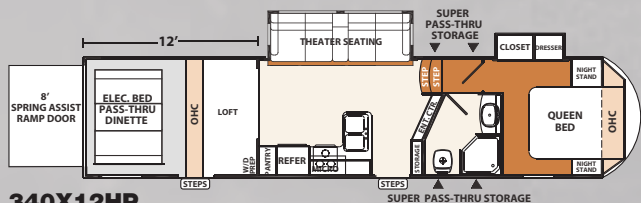


Collapsible ladder stores flat and is ready when you need it.

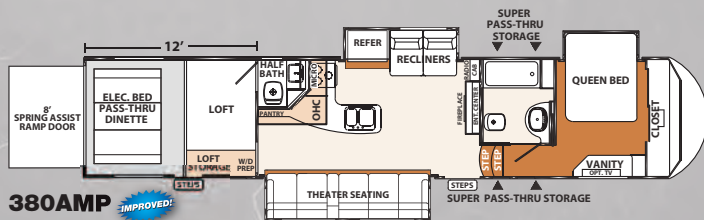
# XLR THUNDERBOLT



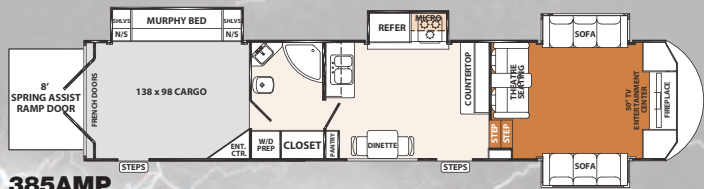
**300X12HP**



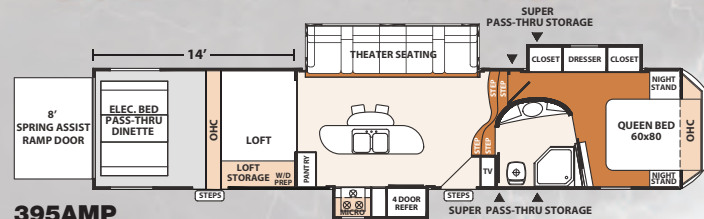
**340X12HP**



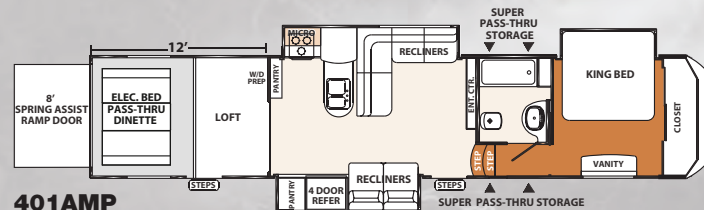
**385AMP**



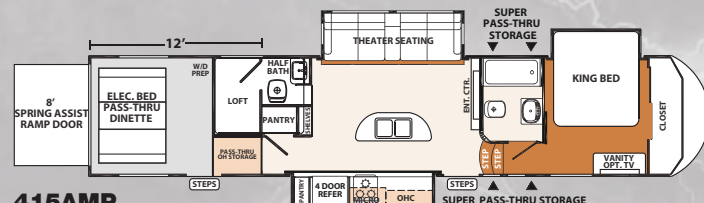
**385AMP**



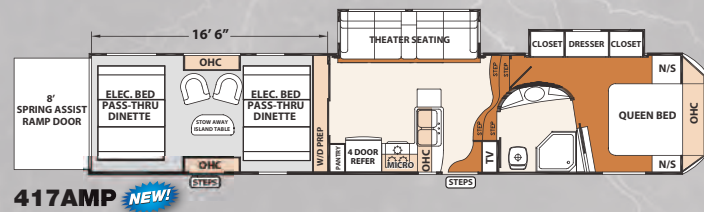
**395AMP**



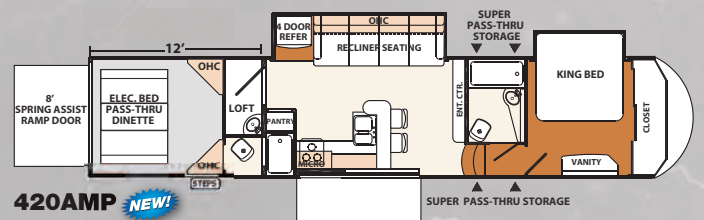
**401AMP**



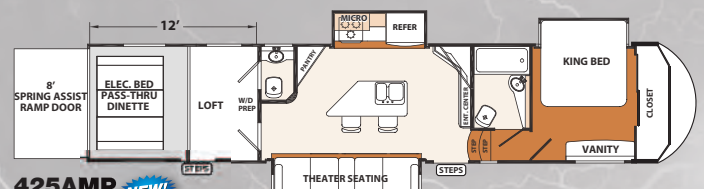
**415AMP**



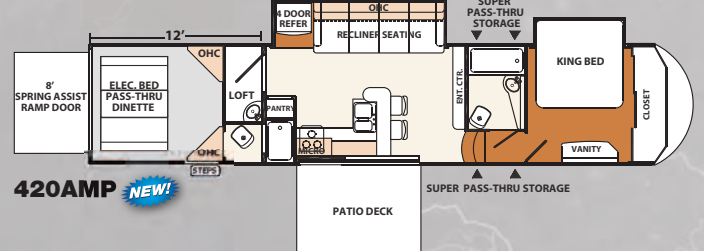
**417AMP** *NEW!*



**420AMP** *NEW!*



**425AMP** *NEW!*



**420AMP** *NEW!*



Standard Graphics



Intensity Package - Black Painted Cap, Grey Gel Coated Sidewalls, Upgraded Graphics



Full Body Paint - Black Pearl



Full Body Paint - Acid Green



Full Body Paint - Victory Red



Full Body Paint - Neon Yellow



Full Body Paint - Cobalt Blue



Full Body Paint - HD Orange

Model	300X12HP	340X12HP	375AMP	380AMP	385AMP	395AMP	401AMP	415AMP	417AMP	420AMP	425AMP
<b>Hitch Weight</b>	1858	2640	2888	2323	2543	2647	3473	2331	TBD	TBD	TBD
<b>Ship Weight</b>	10395	11618	13366	13416	14549	14177	14533	13660	TBD	TBD	TBD
<b>Cargo Capacity</b>	5404	4963	7575	7525	6392	6764	6408	7281	TBD	TBD	TBD
<b>Exterior Length</b>	38' 0"	38' 0"	42' 4"	42' 3"	42' 2"	42' 2"	43' 2"	42' 1"	TBD	TBD	TBD
<b>Exterior Height</b>	13' 4"	13' 4"	13' 4"	13' 4"	13' 4"	13' 4"	13' 4"	13' 4"	13' 4"	13' 4"	13' 4"
<b>Exterior Width</b>	102"	102"	102"	102"	102"	102"	102"	102"	102"	102"	102"
<b>Fresh Water</b>	92	92	150	150	150	150	150	150	TBD	TBD	TBD
<b>Grey Water</b>	64	64	108	54	108	108	108	100	TBD	TBD	TBD
<b>Black Water</b>	32	32	86	108	54	54	54	108	TBD	TBD	TBD

Actual towing capacity is dependent on your particular loading and towing circumstances, which includes GVWR, GAWR and GCWR, as well as adequate trailer brakes. Please refer to the Owners Manual of your vehicle for further information. All illustrations and specifications contained in this literature are based on the latest product information at the time of publication. Forest River, Inc. reserves the right to make changes in prices, colors, materials, equipment and specifications at anytime, without notice, and assumes no responsibility for any error in this literature. All units are shipped F.O.B. point of manufacture. ©2014 Forest River, Inc. XLR 1/14



# XLR THUNDERBOLT TOY HAULERS

Our name says it all -  
**X**tended Living  
and **R**ecreation.

Thunderbolt toy haulers are bold, luxurious and loaded for adventure. Floorplans are carefully planned to create plush, well appointed, living spaces that flow from room-to-room with contemporary appeal. With double and triple slide-outs, 12' to 16-1/2' garages, and a 102" widebody design with vacuum bonded aluminum construction, the choice of rock-solid configurations is up to you.

Life is easy with XLR.



## PRE-DELIVERY INSPECTION FACILITY

20,000 square feet of quality assurance. The bare essentials for a premium product. This state-of-the-art facility gives immediate daily feedback to production for quality assurance in every unit built.



**Forest River, Inc. encourages our customers to purchase their Forest River products from a local dealership whenever possible for the following reasons:**

- 1) Forest River, Inc. dealers are independently owned and operated businesses so priority service and scheduling is at their discretion and is often provided to customers that purchased their unit at that dealership.
- 2) Purchasing locally allows customers to establish meaningful relationships with a dealer, enhancing the RV experience through assistance with product questions, user tips or RV regulations for your state or country, and much more!
- 3) Canadian customers must meet requirements to bring an RV purchased out of the country to their home. These requirements may involve additional inspections and certifications, taxes and fees. Your local Canadian Dealer is a professional at meeting these requirements.
- 4) Scheduling timely warranty repairs and adjustments through a local dealership provides far greater flexibility and convenience to you, the customer!

It is the goal of Forest River, Inc. that all of our RV owners fully enjoy the RV experience and that customer satisfaction meets or exceeds their expectations!

## 24/7 EMERGENCY ROADSIDE ASSISTANCE

For a worry-free ownership experience

Forest River includes one year of **Coach-Net<sup>®</sup>** RV Technical & Roadside Assistance with each RV purchase. Whether new to the RV lifestyle or an experienced RV enthusiast, Forest River owners have 24/7 access to technical, operational and emergency road service coverage throughout the US & Canada. Coach-Net's fast, dependable service is just a phone call away.

**Coach-Net<sup>®</sup>**

RV Technical & Roadside Assistance

## Forest River

2421 Century Dr. ■ Goshen, IN 46528 ■ Phone: 574-642-0438 ■ Fax: 574-343-5909

E-mail: [XLInfo@forestriverinc.com](mailto:XLInfo@forestriverinc.com) ■ [www.forestriverinc.com/XLR](http://www.forestriverinc.com/XLR) ■ [www.forestriveraccessories.com](http://www.forestriveraccessories.com)

Actual towing capacity is dependent on your particular loading and towing circumstances, which includes GVWR, GAWR and GCWR, as well as adequate trailer brakes. Please refer to the Owners Manual of your vehicle for further information. All illustrations and specifications contained in this literature are based on the latest product information at the time of publication. Forest River, Inc. reserves the right to make changes in prices, colors, materials, equipment and specifications at any time, without notice, and assumes no responsibility for any error in this literature. All units are shipped F.O.B. point of manufacture. ©2014 XLR Thunderbolt, a Division of Forest River, Inc., a Berkshire Hathaway company. All Rights Reserved. 12/14

**FREE MEMBERSHIP**  
to Forest River Owners' Group

[www.forestriverfrog.com](http://www.forestriverfrog.com)



### Learn More

Scan this barcode using a QR Reader on your smart phone to learn more about Forest River.



A Berkshire Hathaway company.

 #XLRtoyhaulers

YOUR THUNDERBOLT DEALER