

Cedar Creek

HATHAWAY EDITION

FIFTH WHEELS

Cedar Creek
HATHAWAY EDITION



THE SMART CHOICE FOR THE EXPERIENCED RV'ER



HATHAWAY EDITION PACKAGE:

- ◆ 48" LED TV in Living Room
- ◆ Jensen Slimline AM/FM/ DVD/CD/ USB blue tooth stereo system with powered subwoofer, (4) interior speakers, and (2) exterior speakers
- ◆ Golden Glazed European Beech cabinetry
- ◆ Sculpted solid hardwood slideroom fascia in living room
- ◆ Larger fireplace with solid wood surround
- ◆ Newly designed window valances
- ◆ New LED lighting fixtures
- ◆ Day shade and blackout roller shades
- ◆ La-Z-Boy® Sofa and recliner set with lifetime warranty on parts
- ◆ New wallboard
- ◆ Solid surface LG® countertops with full twin stainless steel under-mounted sinks
- ◆ Recessed stove top with glass cover and solid surface handle
- ◆ Congoleum® Diamondflor
- ◆ New full panel backsplash
- ◆ Island overhead with pendant lights, island surround and LED night lighting
- ◆ Self-closing full extension drawer guides
- ◆ Large medicine cabinet with side shelves in bathroom
- ◆ Newly designed shower
- ◆ "True" pearl gelcoat exterior – truly the best of the best in gelcoat exteriors. Stronger, thicker and keeps it's high gloss longer than our competitors less expensive gel "coated" exteriors
- ◆ Quad level entry step
- ◆ Black metal wrapped electric awning with LED night lighting strip
- ◆ Friction hinge entry door with "soft top" storm door



DOMINO DECOR

Cedar Creek's residential design creates a feeling of home away from home. Name brand products including Congoleum®, Shaw®, Whirlpool®, La-Z-Boy® and LG® offer high quality products for comfort and peace of mind while on the road.

Cedar Creek

HATHAWAY EDITION



34RE



AUTUMN DECOR

This amazing 12 volt Jensen Home Theater System includes full integration with smart devices including Apple's iPhone, iPod, iPad, plus Bluetooth streaming audio, video, MP3 and weather band information. A digital handshake between the 48" Jensen television and stereo, makes this system the RV industry's first, easy to use, stereo with all-digital connectivity. Control the stereo and interior/exterior speakers with your phone, or the remote from inside or outside the coach.



Cedar Creek

HATHAWAY EDITION



38FB2

Cedar Creek's bathrooms all feature a 48" residential, one-piece fiberglass rectangular shower with sliding glass doors, a large seat and an upgraded shower head. An 18" circular flow porcelain toilet and linen cabinet complete this spacious bathroom. This walk-in closet makes the most of every inch, with a place for everything. Each closet is washer/dryer prepped, features 92" of hanging space, a three drawer storage box, and plenty of shelving.



This 38FB2 front bathroom floorplan provides a choice of a half bath or walk-in pantry, (pictured here), near the living area. Add an optional stack washer and dryer, (located in the front closet), and you have the perfect coach for full time travel.



Cedar Creek
HATHAWAY EDITION

**RELAX IN RESIDENTIAL
STYLE AND LUXURY**

Relax a little longer in our private bedroom retreat. Each Serta® Winding Road Mattress is a 60" x 80" queen (King optional) or upgrade to the Bellagio mattress (Queen or king) with a gel memory foam top, which gives you the luxury sleep of a five star hotel.



Cedar Creek

HATHAWAY EDITION

Radius ceilings create a dramatic effect, adding beauty and elegance to Cedar Creek's front living room fifth wheels.

Anything but basic - Cedar Creek's modern luxury kitchens are a central living space to prepare meals, enjoy dinner and relax comfortably with family and friends.

KITCHEN FEATURES:

- ◆ Stainless steel 30" microwave with built in vent
- ◆ Recessed large stainless steel oven with Piezo igniter, sealed burners and glass cover with solid surface handle
- ◆ Optional 20 cu. ft. stainless steel french door refrigerator with freezer drawer and ice maker
- ◆ Self-closing kitchen drawer guides plus a double waste basket cabinet
- ◆ Solid surface LG® countertops with full twin stainless steel under-mounted sinks



38FL6

HARVEST DECOR





38CK

Sit back, relax and enjoy this entertainment center in peaceful comfort with the roof mounted Whisper Quiet High Performance air conditioner with cold air returns. Shown with Paradise decor and Lux Beige La-Z-Boy® 80" sofa and optional theater seating.

DECOR

AUTUMN

HARVEST

PARADISE

DOMINO



L A Z B O Y RECLINERS AND THEATRE SEATING

Live life comfortably with our standard La-Z-Boy® sofa sets. Choose Beige or Mahogany recliners, or theater seating for residential comfort that lasts a lifetime.



Dirt Devil® CV950 central vacuum cleaning system with VacPan™ automatic dustpan at entry door.

38CK Hall closet with optional front loading Splendide washer and dryer.



MAHOGANY



BEIGE



A water saving, stainless steel drawer dishwasher is optional on select models. (36CKTS, 38CK, 38FB2 only)



Our freestanding table comes standard with a large leaf extension and four chairs, (two with hidden storage and two fold-away).



Cedar Creek's luxurious bathroom includes a spacious 48" one-piece fiberglass residential shower with a large seat and triple sliding glass doors, an 18" tall porcelain toilet with circular flush and a Fantastic Fan.



Wireless Remote Control – A Forest River exclusive that has controls for the electric awning, slide rooms, all jacks including the optional "level-up", and security entrance lighting.



Aluminum skirting is wrapped all the way to the frame for a clean, crisp looking exterior.



Automotive frameless windows give this coach's exterior an elegance only seen in high dollar fifth wheels.



Removable "Soft Top" Vinyl Storm Doors allow light and visibility without losing cooling or heating.



Cedar Creek's original design "Z-frame" chassis. This frame gives our customers over 100 cu. ft. of storage space, turning their front storage compartment into a front storage shed.

Docking Station includes outside shower, black tank flush, water bypass, 12V battery disconnect, selector switches, dump valves, water tank and city fills for centralized convenience.



All fifth wheels are now prewired for easy wireless observation camera installation at the dealership for safe, convenient rear viewing when backing up and on the road.



Suburban

All Cedar Creeks are now equipped with a Suburban two-stage, on demand, water heater with 5 burners. It uses 50% less propane than a standard RV water heater and has freeze protection.



A&E metal wrapped awning with LED night light strip.



Another feature that we've taken from residential construction is our super quiet "HP" (High performance) 15,000 BTU air conditioning system, which includes a larger compressor and cold air returns! This means 30% more air is being forced into the coach than a standard 15,000 BTU air conditioner.



These day shades with blackout roller shades offer the best of both worlds. They're actually two shades in one – a night fabric lowers completely for privacy, or can be retracted to the top to reveal a full length day shade. Both day and night shades can be set in any position and are designed with speed and length controls for privacy or a scenic view.

OPTIONAL "LEVEL-UP"™ 6 POINT HYDRAULIC STABILIZATION SYSTEM



Rated #1 Customer Preferred Option

Leveling and stabilizing a fifth wheel has never been easier. Patented "Level-Up" technology makes set ups faster, and a lot safer than the older systems. This system stabilizes the coach once the legs have been set.

Cedar Creek

HATHAWAY EDITION

Cedar Creek

HATHAWAY EDITION

Side Walls R-Value (9)

- ◆ Handmade 2" x 2" - 16" (or less) on center sidewalls with individually fastened custom "L" brackets combined with 3M® Silaprene adhesives for a stronger frame without welding or lamination. (475 PSI at 2" per minute, marine grade)

- ◆ Nobel "True" Classic Performance Plus Gelcoat on all exteriors - the best of the best in fiberglass. Don't accept "hi-gloss fiberglass" or "gel-coated" sidewalls - only True Performance Plus Gelcoat stands the test of time.
- ◆ All baggage doors and entry doors are made out of Nobel Classic True Gelcoat exterior to prevent uneven aging of your unit

- ◆ 3M® Silaprene Bonded Sidewalls - resilient, grows stronger with age. Also has outstanding resistance to UV, heat, cold, moisture, oils, gasoline, highway chemicals, and creates a bond that cannot delaminate with time
- ◆ Sidewalls are bolted to the floor with 5/16" x 6-1/2" carriage bolts at each outrigger
- ◆ Glued R-7 fiberglass insulation expanded to its full capacity within the sidewall frame
- ◆ Designed by Forest River, a new unique slide-out seal system for tighter, stronger water protection - first of its class - compare it!
- ◆ Slide rooms insulated on all five sides

Floors R-Value (38)

- ◆ 3" Aluminum frame floor with in-floor heat ducting and radius "L" brackets combined with 3M® Silaprene adhesives
- ◆ Cambered 10" + 2" I-beam "Z" frame with large support outriggers and full length welds
- ◆ 5/8" Tongue and groove plywood floor is attached to the aluminum frame with Silaprene and screwed every 6"
- ◆ Darco waterproof underbelly
- ◆ Fully enclosed 4' x 8' ABS removable panels for easier access into the underbelly. We use wood stringers to attach with no holes in the frame
- ◆ Triple layer insulation enhances the protective values of plywood, vinyl, carpet, carpet pads, tank heaters, etc.
- ◆ 12 Volt tank heaters on all tanks
- ◆ Radiant shield insulation - 97% reflectivity, 3% emission

Roof R-Value (38)

- ◆ Full length 3/8" wood roof decking for a full walk-on roof (Screwed - not stapled)
- ◆ Triple layer insulation supplements the cohesive retention factors of roof decking and rubber membrane
- ◆ 2" x 2" - 16" OC -5" truss roof rafters with 8" wide circular air duct. Circular ducting combined with our high performance (bigger compressor) air conditioner gives Cedar Creek a 30% increase in air conditioning performance over our competitors in hotter climates
- ◆ Optional second Whisper Quiet roof mount air conditioner (Bedroom)
- ◆ Two ply - Tuff Ply rubber roof membrane with built-in fire retardant. (12 Year warranty)
- ◆ Full length drip rails from the front to the rear of the unit
- ◆ Roof is bolted to sidewall with 5/16" x 3-1/2" carriage bolts
- ◆ Radiant shield insulation - R Value 38, 97% reflectivity, 3% emission
- ◆ Fully ducted 15,000 BTU high output A/C with cold air returns that are also braced and wired for an optional ducted second A/C



Cold room tested to zero degrees Fahrenheit with standard insulation and heating pads.

SUPERIOR PERFORMANCE

Dexter Axles/Brakes/Suspension DEXTER AXLE For Performance and Safety

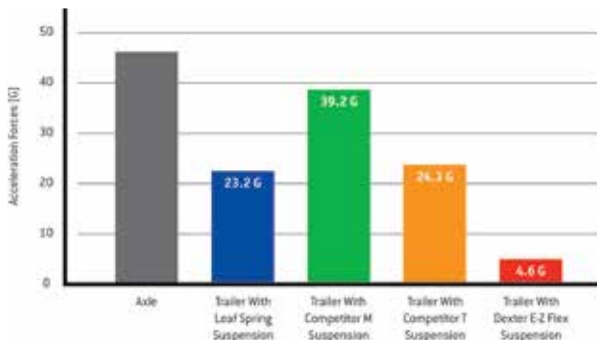
- ◆ Nev-R-Adjust™ Brakes are always properly adjusted for improved stopping power in half the distance
- ◆ E-Z Flex™ rubber equalization system with 1/2" link plates and eight grease zerks per side
- ◆ Heavy duty axles with bronze bushings in shackles (No plastic bushings like our competitors)
- ◆ 16" eight lug, ST, "G" rated, 14 ply tires on 7000 lb. Dexter Axles



Dexter Nev-R-Adjust®
Brakes Standard



Dexter E-Z Flex®
Suspension Standard



Compare acceleration forces experienced by an axle and trailer while traveling over railroad tracks at 30 MPH. The E-Z Flex® System provides up to an 80% reduction in forces on the trailer frame vs. a standard equalizer. E-Z Flex® significantly outperforms all other competitors in the same road test for a smoother, more protective ride for your trailer and cargo.

Aluminum Frame Construction

State-of-the-art construction techniques along with top grade building components give Cedar Creek its reputation for long-lasting quality.

Cedar Creek's famous all aluminum super-structure

Bonded True Nobel Classic™ Pearl gelcoat exteriors

Hehr automotive frameless windows

Optional Level-Up 6-point hydraulic leveling system

The Dexter difference - safety and performance package

Wired for wireless rear camera

Soft top vinyl storm doors

Remote control for slides, hydraulic jacks, awning and security lights

Black metal wrapped A&E awnings with LED night light strip

Radiant Shield thermo-foil R-38 value

R-38 ♦ Heating pads on all tanks



True Nobel Classic fiberglass gelcoat exteriors and end walls. Truly the best of the best in fiberglass. Accept no imitations.



Residential Glasswool Insulation, designed by nature.



Cedar Creek's famous residential All-aluminum Super-structure (Roof, sidewalls, and floor) on 16" centers or less.



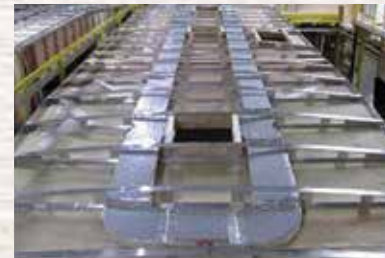
3" Aluminum floor studs, heat duct and 5/8" tongue and groove plywood floor.



Aluminum window frames.

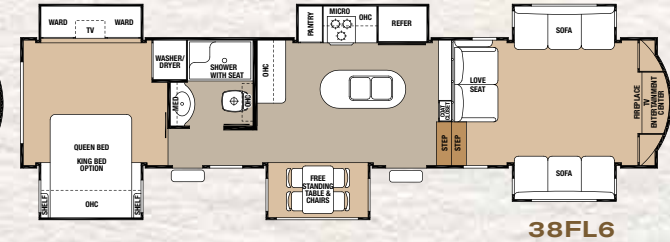
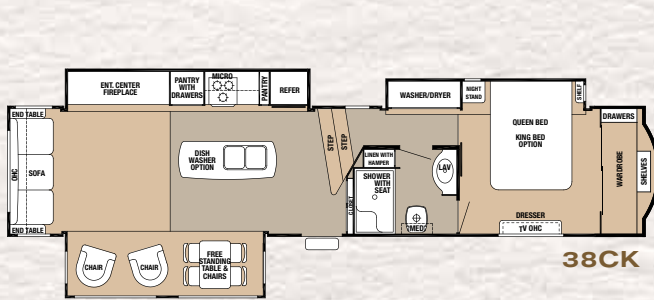
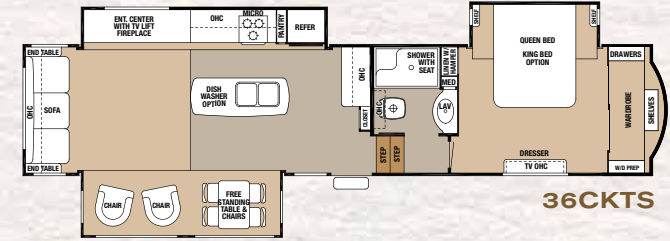
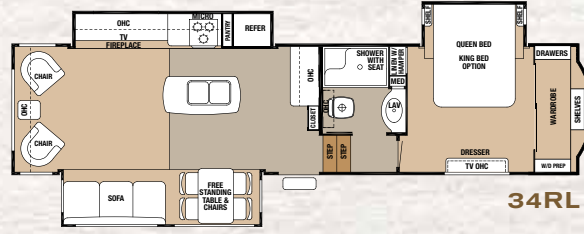
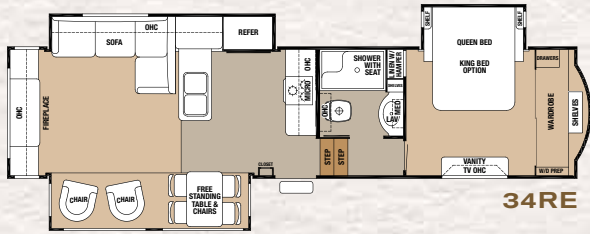


R-38 Radiant shield Thermo-foil wrap through ceilings, underbellies and under front caps.



High-Performance Quiet Zone™ Ducted Air System with a 15,000-BTU HP air conditioner, a residential-style return air duct system and Comfort Control Center creates a dynamic combination for powerful results. It's the most efficient AC system in existence with both the industry's highest-performance AC and the industry's lowest power draw, with second Bedroom air conditioner too!





SPECIFICATIONS

MODEL	34RE	34RL	36CKTS	38CK	38FB2	38FL6
GVWR	15853 lb	16173 lb	16407 lb	16235 lb	16390 lb	18000 lb
Hitch Weight	1853 lb	2173 lb	2500 lb	2310 lb	2390 lb	2715 lb
UVW	11955 lb	11440 lb	12670 lb	13260 lb	12920 lb	14290 lb
CCC	3898 lb	4733 lb	3737 lb	2975 lb	3470 lb	3710 lb
Exterior Length	37'	36' 8"	39' 10"	40'7"	41'10"	41'9"
Exterior Height	13'	13'	13'	13'	13'	13'
Exterior Width	96"	96"	96"	96"	96"	96"
Fresh Water	69 gal	69 gal	69 gal	69 gal	69 gal	69 gal
Gray Water	80 gal	80 gal	80 gal	80 gal	80 gal	80 gal
Black Water	40 gal	40 gal	40 gal	40 gal	80 gal	40 gal
Awning Size	16 ft	16 ft	18 ft	18 ft	18 ft	21 ft

All Weights listed above are base weights. Weight capacities +/- 5%. NOTE: All fifth wheel lengths include extended pin box and 4" bumper. Model number of any particular unit does not necessarily reflect the overall length of the unit itself.

GVWR (Gross Vehicle Weight Rating) - is the maximum permissible weight of the unit when fully loaded. It includes all weights, inclusive of all fluids, cargo, optional equipment and accessories. For safety and product performance do NOT exceed the GVWR.

GAWR (Gross Axle Weight Rating) - is the maximum permissible weight, including cargo, fluids, optional equipment and accessories that can be safely supported by a combination of all axles.

UVW (Unloaded Vehicle Weight)* - is the typical weight of the unit as manufactured at the factory. It includes all weight at the unit's axle(s) and tongue or pin and LP Gas. The UVW does not include cargo, fresh potable water, additional optional equipment or dealer installed accessories.

CCC (Cargo Carrying Capacity)** - is the amount of weight available for fresh potable water, cargo, additional optional equipment and accessories. CCC is equal to GVWR minus UVW. Available CCC should accommodate fresh potable water (8.3 lbs. per gallon). Before filling the fresh water tank, empty the black and gray tanks to provide for more cargo capacity.

*Estimated Average based on standard build optional equipment.** Estimated average based on standard build optional equipment

Each Forest River RV is weighed at the manufacturing facility prior to shipping. A label identifying the unloaded vehicle weight of the actual unit and the cargo carrying capacity is applied to every Forest River RV prior to leaving our facilities.

The load capacity of your unit is designated by weight, not by volume, so you cannot necessarily use all available space when loading your unit.

All information contained in this brochure is believed to be accurate at the time of publication. However, during the model year, it may be necessary to make revisions and Forest River, Inc., reserves the right to make all such changes without notice, including prices, colors, materials, equipment and specifications as well as the addition of new models and the discontinuance of models shown in this brochure. Therefore, please consult with your Forest River dealer and confirm the existence of any materials, design or specifications that are material to your purchase decision.

FEATURES AND OPTIONS

HATHAWAY EDITION PACKAGE

- ◆ 48" LED TV in Living Room
- ◆ Jensen Slimline AM/FM/ DVD/CD/USB blue tooth stereo system with powered subwoofer, (4) interior speakers, and (2) exterior speakers
- ◆ Golden Glazed European Beech cabinetry
- ◆ Sculpted solid hardwood slideroom fascia in living room
- ◆ Larger fireplace with solid wood surround
- ◆ Newly designed window valances
- ◆ New LED lighting fixtures
- ◆ Day shade and blackout roller shades
- ◆ La-Z-Boy® Sofa and recliner set with lifetime warranty on parts
- ◆ New wallboard
- ◆ Solid surface LG® countertops with full twin stainless steel under-mounted sinks
- ◆ Recessed stainless steel large oven with Piezo igniter, sealed burners and glass cover with solid surface handle
- ◆ Congoleum® Diamondflor
- ◆ New full panel backsplash
- ◆ Island overhead with pendant lights and island surround
- ◆ Self-closing full extension drawer guides
- ◆ Large medicine cabinet with side shelves in bathroom
- ◆ Newly designed shower
- ◆ "True" pearl gelcoat exterior – truly the best of the best in gelcoat exteriors. Stronger, thicker and keeps it's high gloss longer than our competitors less expensive gel "coated" exteriors
- ◆ Quad level entry step
- ◆ Black metal wrapped electric awning with LED night lighting strip
- ◆ Friction hinge entry door

CEDAR CREEK EXPLORER PACKAGE

◆ DEXTER® SAFETY AND PERFORMANCE PACKAGE

- Nev-R-Adjust™ brakes are always properly adjusted for improved stopping power in half the distance
- E-Z Flex™ rubber equalization system with 1/2" link plates and (8) grease zerks per side
- Heavy duty axles with bronze bushings in shackles (No plastic bushings like our competitors)
- ◆ 16" 8-lug, ST, "G" rated tires on 7,000 lb. Dexter axles
- ◆ 17.5" 8-lug, ST, "H" rated tires on 8,000 lb. Dexter axles (38FL6 only)
- ◆ Prepped for wireless observation system



DEXTER AXLE

- ◆ Hehr® automotive frameless windows with tinted safety glass – all windows open!
- ◆ 19 Cu. ft. stainless steel electric refrigerator with inverter and ice maker
- ◆ Dirt Devil® central vacuum system automatic dustpan
- ◆ Front and rear "True" gelcoat caps
- ◆ Winegard® HD ready pre-wire
- ◆ One year of Coach Net roadside assistance
- ◆ Membership to the Forest River Owner's Group (F.R.O.G.)

EXTERIOR FEATURES

- ◆ 1-1/4" thick, insulated, compartment doors with gas lifts, slam door latches and dedicated key lock
- ◆ "Soft top" storm doors
- ◆ 50 Amp service
- ◆ 65 Amp power converter
- ◆ Central docking station
- ◆ Satellite and cable hook-ups located in docking station wired into the living room and bedroom
- ◆ Ducted 15,000 BTU Duo-Therm "HP" (High performance) air conditioner with larger compressor, circular motion 8" ductwork and cold air returns. The larger compressor forces 30% more air into the coach - the most powerful air conditioner in RVs today.
- ◆ Hydraulic front landing jacks placed outside the frame with 8" round landing pads
- ◆ Braced and wired for second air conditioner
- ◆ Rear ladder
- ◆ LED high bright lights on the front and rear of the coach
- ◆ Lighted entry step
- ◆ Radius wrapped bottom metal skirt to the frame
- ◆ Remote control operates safety entry lights, slide-outs, electric awning and jack legs of the 6-point leveling system
- ◆ Selector switches for slide-rooms

LIVING ROOM

- ◆ Ceiling fan with light
- ◆ Lambrequin style valance with curtains throughout except bedroom
- ◆ Newly designed solid wood slideroom fascia (Most competitors use vinyl wrapped foam)
- ◆ Shaw® R2X stain and soil resistant carpeting in all living room and bedroom areas
- ◆ (1) Barstool (N/A 34RE, 38FL6)

KITCHEN FEATURES

- ◆ Create-A-Breeze Fantastic fan with thermostat and rain sensor in the kitchen
- ◆ Stainless steel 30" over the range microwave with built-in vent
- ◆ Hidden hinges
- ◆ Crown molding complimenting all overhead cabinets in kitchen area
- ◆ Free standing table with hidden table leaf extension, (2) standard chairs and (2) folding chairs
- ◆ Pantry (Where applicable)
- ◆ Golden Glazed European Beech drawer fronts with Baltic Birch sides and ends
- ◆ Golden Glazed European Beech cabinet doors with hardwood styles
- ◆ Toe kicks at the base of the kitchen cabinetry

BATHROOM

- ◆ Granite-Light bathroom sink
- ◆ 18" Tall porcelain toilet with circular flow flush system
- ◆ 12" Ten blade bathroom breeze power bath vent with convenient wall switch
- ◆ Residential bath towel rack and toilet paper holder
- ◆ 48" One-piece fiberglass residential shower with large seat, upgraded shower head, wrap around storage ledges and triple sliding glass doors

MISCELLANEOUS FEATURES

- ◆ Suburban two-stage on demand water heater
- ◆ 12 Volt battery disconnect
- ◆ Arched radius ceilings for additional height throughout
- ◆ Cedar Creek switch control center
- ◆ Dometic comfort control center with dual zone control for heating and cooling
- ◆ LP gas/carbon monoxide detector
- ◆ Smoke detector
- ◆ Solid state 65 amp power converter
- ◆ Component plate with HDMI® in entertainment center
- ◆ Suburban 35,000 and 40,000 BTU furnaces
- ◆ Wall mount monitor panel

BEDROOM FEATURES

- ◆ 32" LED Jensen Television
- ◆ Serta® Winding Road 60" x 80" Queen bed with 2" x 2" Finished bed base with gas lifts, side ventilation windows
- ◆ Ceiling mounted overhead reading lights with individual switches
- ◆ Walk-in front closet
- ◆ Radius ceilings with a full 6'9" of bedroom height
- ◆ Solid wood dresser top (No Formica)

- ◆ Washer/dryer prep that allows for either combination or stack washer/dryer

OPTIONS

- ◆ Level-Up hydraulic 6-point leveling system – levels within 1/10" in less than 60 seconds
- ◆ Second 13,500 BTU ducted "Whisper Quiet" Penguin air conditioner
- ◆ Third 13,500 BTU ducted "Whisper Quiet" Penguin air conditioner with power management system
- ◆ 13 Cu. ft. side-by-side gas/electric refrigerator with raised wood fronts
- ◆ 20 Cu. ft. stainless steel French door electric refrigerator with pull-out lower freezer compartment, inverter and ice maker (N/A 34RL)
- ◆ 30" Stainless steel convection oven/microwave
- ◆ Stainless steel dishwasher
- ◆ 72" x 80" King size bed with Serta® Winding Road mattress
- ◆ Serta® Bellagio Luxury Queen and King Mattress with Gel Memory Foam Top
- ◆ Awning toppers
- ◆ Metal wraps for awning toppers
- ◆ 12' Slide room awning with metal wrap (N/A 38FL6)
- ◆ 1-1/4" Bike rack receiver hitch
- ◆ Create-A-Breeze Fantastic fans with thermostat and rain sensor in the bedroom area
- ◆ Exterior paint packages - custom or full body touring edition
- ◆ Heat pump on main air conditioner
- ◆ Matching ottoman with hidden storage
- ◆ Theater seating IPO recliners (No charge)
- ◆ Power theater seating IPO recliners
- ◆ Vinyl flooring throughout, except in bedroom and slides (No charge)
- ◆ Rebond carpet pad
- ◆ LP generator prep
- ◆ Cadet self-regulating bedroom wall heater
- ◆ Splendide® combination washer/dryer
- ◆ Splendide® stackable washer/dryer – wired individually to allow simultaneous wash/dry cycles
- ◆ Wireless rear observation camera
- ◆ Onan 5.5 kw Marquis Gold LP generator
- ◆ Dual pane windows
- ◆ Trail Air™ air ride hitch coupler
- ◆ 50 Amp cord reel
- ◆ Solar prep
- ◆ 12 Gal. gas/electric water heater
- ◆ 200W Solar panel



BURGUNDY



ARIZONA BEIGE



CLASSIC CHAMPAGNE



MIDNIGHT MIST

CUSTOM PAINT

CEDAR CREEK "TOURING EDITION" FULL BODY PAINT

Full Body Paint, adorned with Cedar Creek graphics, will turn heads wherever you travel. These bold new exterior options are offered along with our Standard Graphics and Custom Paint choices.



Forest River, Inc. encourages our customers to purchase their Forest River products from a local dealership whenever possible for the following reasons:

- 1) Forest River, Inc. dealers are independently owned and operated businesses so priority service and scheduling is at their discretion and is often provided to customers that purchased their unit at that dealership.
- 2) Purchasing locally allows customers to establish meaningful relationships with a dealer, enhancing the RV experience through assistance with product questions, user tips or RV regulations for your state or country, and much more!
- 3) Canadian customers must meet requirements to bring an RV purchased out of the country to their home. These requirements may involve additional inspections and certifications, taxes and fees. Your local Canadian Dealer is a professional at meeting these requirements.
- 4) Scheduling timely warranty repairs and adjustments through a local dealership provides far greater flexibility and convenience to you, the customer!

It is the goal of Forest River, Inc. that all of our RV owners fully enjoy the RV experience and that customer satisfaction meets or exceeds their expectations!



PRE-DELIVERY INSPECTION FACILITY

20,000 square feet of quality assurance. The bare essentials for a premium product. This state-of-the-art facility gives immediate daily feedback to production for quality assurance in every unit built.

FREE MEMBERSHIP
to Forest River Owners' Group

www.forestriverfrog.com



24/7 EMERGENCY ROADSIDE ASSISTANCE

For a worry-free ownership experience

Coach-Net®

RV Technical & Roadside Assistance

Forest River includes one year of Coach-Net RV Technical & Roadside Assistance with each RV purchase. Whether new to the RV lifestyle or an experienced RV enthusiast, Forest River owners have 24/7 access to technical, operational and emergency road service coverage throughout the US & Canada. Coach-Net's fast, dependable service is just a phone call away.



Learn More

Scan this barcode using a QR Reader on your smart phone to learn more about Forest River.



A Berkshire Hathaway company.



HATHAWAY EDITION

YOUR CEDAR CREEK DEALER

The Smart Choice for the Experienced RV'er

FOREST RIVER INC. / CEDAR CREEK DIVISION

501 Hawpatch Road / Topeka, IN 46571 ♦ Phone : 260-593-2404 / Fax: 260-593-2447

Parts & Service / Ph: 260-593-3017 / Fax: 260-593-2645

On The Web at: www.forestriverinc.com/cedarcreek

All information contained in this brochure is believed to be accurate at the time of publication. However, during the model year, it may be necessary to make revisions and Forest River, Inc., reserves the right to make all such changes without notice, including prices, colors, materials, equipment and specifications as well as the addition of new models and the discontinuance of models shown in this brochure. Therefore, please consult with your Forest River dealer and confirm the existence of any materials, design or specifications that are material to your purchase decision. ©2015 Cedar Creek, a Division of Forest River, Inc., a Berkshire Hathaway company. All Rights Reserved. 11/15