

# Cottage

BY CEDAR CREEK

HATHAWAY EDITION ♦ WIDE BODY TRAVEL TRAILERS

BY CEDAR CREEK

Cottage

THE SMART CHOICE  
FOR THE EXPERIENCED RV'ER



40CCK







# Cottage

BY CEDAR CREEK

## HATHAWAY EDITION WIDE BODY TRAVEL TRAILERS

*Enjoy the comfort of your very own Cottage at a favorite vacation spot. The Cedar Creek Cottage offers the convenience of a travel trailer with the amenities of a fine vacation home. The wide body design and eight foot interior heights provide roomy comfort for family and guests. Whether at the lake, in the mountains, or a favorite campground, Cottage's upscale features make you feel right at home.*

### COTTAGE PACKAGE

- ◆ 48" LED TV in Living Room
- ◆ Jensen Slimline AM/FM/DVD/CD/USB Bluetooth stereo system with smart device integration, powered subwoofer, (4) interior speakers, and (2) exterior speakers
- ◆ Golden Glazed European Beech cabinetry
- ◆ Sculpted solid hardwood slideroom fascia in living room
- ◆ Larger fireplace with solid wood surround
- ◆ Newly designed window valances
- ◆ New LED lighting fixtures
- ◆ Day shade and blackout roller shades
- ◆ La-Z-Boy® Sofa and recliner set with lifetime warranty on parts
- ◆ New wallboard
- ◆ Solid surface LG® countertops with full twin stainless steel under-mounted sinks
- ◆ Recessed, stainless steel large oven with Piezo igniter, sealed burners and glass cover with solid surface handle
- ◆ Congoleum® Diamondflor
- ◆ New full panel backsplash
- ◆ Island overhead with pendant lights and island surround
- ◆ Self-closing full extension drawer guides
- ◆ Large medicine cabinet with side shelves in bathroom
- ◆ Newly designed shower
- ◆ "True" pearl gelcoat exterior – truly the best of the best in gelcoat exteriors. Stronger, thicker and keeps its high gloss longer than our competitors less expensive gel "coated" exteriors
- ◆ Black metal wrapped electric awning with LED night lighting strip
- ◆ Friction hinge entry door with "soft top" vinyl storm door



*Our freestanding table comes standard with a large leaf extension and four chairs.*

*Cedar Creek's residential design creates a feeling of home away from home. Name brand products including Congoleum®, Shaw®, Whirlpool®, La-Z-Boy® and LG® offer high quality products for comfort, and peace of mind, while on the road.*









Cottage bathrooms all feature a 48" residential, one-piece fiberglass rectangular shower with sliding glass doors, a large seat and an upgraded shower head. An 18" circular flow porcelain toilet and linen cabinet complete this spacious bathroom.



The bedroom slide accommodates a queen size bed that includes a deluxe Serta® mattress and large under bed storage area. The mirrored wardrobe, residential dresser, and lots of deep overhead cabinets provide plenty of personal storage space. An optional king sized bed is available in all models.



**DECOR**

**AUTUMN**

**HARVEST**

**PARADISE**

**DOMINO**

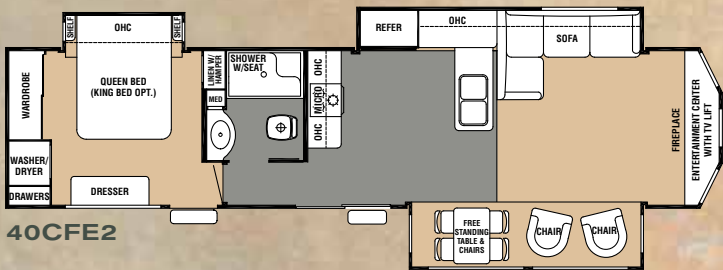
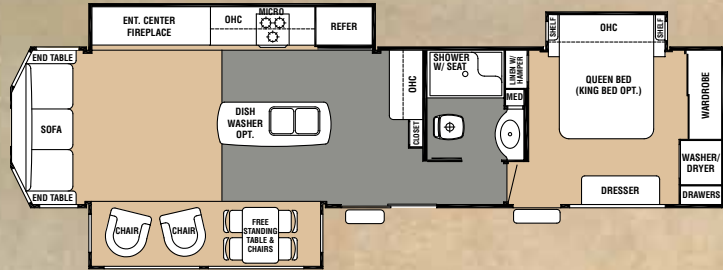
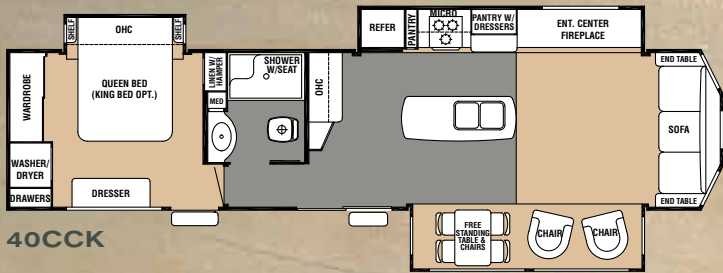


*Cottage*  
BY CEDAR CREEK



# COTTAGE FLOOR PLANS

# L A Z B O Y RECLINERS AND THEATRE SEATING



MODEL	40CCK	40CRS	40CFE2
GVWR	13835 lb	13565 lb	13764 lb
Hitch Weight	1835 lb	1565 lb	1674 lb
UVW	11304 lb	11499 lb	12019 lb
CCC	2531 lb	2066 lb	1655 lb
Exterior Length	40' 4"	41' 6"	40' 6"
Exterior Height	12' 10"	12' 10"	12' 10"
Exterior Width	102"	102"	102"
Fresh Water	76 gal	76 gal	76 gal
Gray Water	120 gal	120 gal	120 gal
Black Water	40 gal	40 gal	40 gal
Awning Size	18 ft	18 ft	21 ft

All Weights listed at left are base weights. Weight capacities +/- 5%. NOTE: All fifth wheel lengths include extended pin box and 4" bumper. Model number of any particular unit does not necessarily reflect the overall length of the unit itself.

Live life comfortably with our standard La-Z-Boy® sofa sets. Choose Beige or Mahogany recliners, or theater seating for residential comfort that lasts a lifetime.



These day shades with blackout roller shades offer the best of both worlds. They're two shades in one – a night fabric lowers completely for privacy, or can be retracted to the top to reveal a full length day shade. Both day and night shades can be set in any position and are designed with speed and length controls for privacy or a scenic view.



"Made in the USA" 20 watt LED lighting throughout our cabin is cool to the touch, creates a brighter, white light, and uses 80% less electricity.



Optional water saving dishwasher

Watch the Cedar Creek Cottage construction video at: [www.forestriverinc.com/destinationtraveltrailers/cedarcreekcottage](http://www.forestriverinc.com/destinationtraveltrailers/cedarcreekcottage)

GVWR (Gross Vehicle Weight Rating) - is the maximum permissible weight of the unit when fully loaded. It includes all weights, inclusive of all fluids, cargo, optional equipment and accessories. For safety and product performance do NOT exceed the GVWR.

GAWR (Gross Axle Weight Rating) - is the maximum permissible weight, including cargo, fluids, optional equipment and accessories that can be safely supported by a combination of all axles.

UVW (Unloaded Vehicle Weight)\* - is the typical weight of the unit as manufactured at the factory. It includes all weight at the unit's axle(s) and tongue or pin and LP Gas. The UVW does not include cargo, fresh potable water, additional optional equipment or dealer installed accessories.

CCC (Cargo Carrying Capacity)\*\* - is the amount of weight available for fresh potable water, cargo, additional optional equipment and accessories. CCC is equal to GVWR minus UWW. Available CCC should accommodate fresh potable water (8.3 lbs. per gallon). Before filling the fresh water tank, empty the black and gray tanks to provide for more cargo capacity.

\*Estimated Average based on standard build optional equipment. \*\*Estimated average based on standard build optional equipment.

Each Forest River RV is weighed at the manufacturing facility prior to shipping. A label identifying the unloaded vehicle weight of the actual unit and the cargo carrying capacity is applied to every Forest River RV prior to leaving our facilities.

The load capacity of your unit is designated by weight, not by volume, so you cannot necessarily use all available space when loading your unit.



# Cottage

BY CEDAR CREEK

## FEATURES AND OPTIONS

### COTTAGE PACKAGE

- ◆ 48" LED TV in Living Room
- ◆ Jensen Slimline AM/FM/DVD/CD/USB Bluetooth stereo system with smart device integration, powered subwoofer, (4) interior speakers, and (2) exterior speakers
- ◆ Golden Glazed European Beech cabinetry
- ◆ Sculpted solid hardwood fascia in living room
- ◆ Larger fireplace with solid wood slideroom surround
- ◆ Newly designed window valances
- ◆ New LED lighting fixtures
- ◆ Day shade and blackout roller shades
- ◆ La-Z-Boy® Sofa and recliner set with lifetime warranty on parts
- ◆ New wallboard
- ◆ Solid surface LG® countertops with full twin stainless steel under-mounted sinks
- ◆ Recessed, stainless steel large oven with Piezo igniter, sealed burners and glass cover with solid surface handle
- ◆ Congoleum® Diamondflor
- ◆ New full panel backsplash
- ◆ Island overhead with pendant lights and island surround
- ◆ Self-closing full extension drawer guides
- ◆ Large medicine cabinet with side shelves in bathroom
- ◆ Newly designed shower
- ◆ "True" pearl gelcoat exterior – truly the best of the best in gelcoat exteriors. Stronger, thicker and keeps its high gloss longer than our competitors less expensive gel "coated" exteriors
- ◆ Black metal wrapped electric awning with LED night lighting strip
- ◆ Friction hinge entry door with "soft top" vinyl storm door

### CEDAR CREEK COTTAGE EXPLORER PACKAGE

- ◆ Dexter Safety and Performance Package
  - Nev-R-Adjust™ brakes are always properly adjusted for improved stopping power in half the distance
  - Heavy Duty Axles with Heavy Duty Link Plates and Shackles
  - 16" 6-Lug, ST, "E" Tires on 6,000 lb. Dexter Axles
- ◆ 19 Cu. Ft. Electric Refrigerator
- ◆ Front "True" Gelcoat Cap
- ◆ One-Year Coach-Net® Roadside Assistance
- ◆ Winegard® HD Ready Pre-Wire
- ◆ FREE Membership to the Forest River Owner's Group (FROG)

### EXTERIOR FEATURES

- ◆ 102" Wide Body
- ◆ 50 Amp Service
- ◆ 7' (84") Tall Slide-Outs
- ◆ 8" (96") Interior Height
- ◆ ABS Ribbed Underbelly Panels with No Screws Into the I-Beam Frame
- ◆ Black Tank Flush
- ◆ Break Away Switch
- ◆ Cambered 10" I-Beam
- ◆ Cedar Creek's Famous All Residential Super Structure Aluminum
- ◆ Convenient Single Access Phone Jack and Cable TV Connections
- ◆ Decorative Front Cap with Molded Picket Fence
- ◆ Detachable Hitch
- ◆ Enclosed and Triple Layered Insulated Underbelly (R-38)
- ◆ Hitch Light
- ◆ Large Surface 12V Heating Pads on All Holding and Fresh Water Tanks
- ◆ Lighted Entry Step
- ◆ Porch Light
- ◆ Selector Switches for Slide-Rooms
- ◆ Clamp Ring Windows with Butyl Rubber Seals
- ◆ Ducted 15,000 Duo-Therm High Performance Air Conditioner, Braced and Wired for a Second Air Conditioner
- ◆ 5/8" Tongue and Groove Plywood Floor
- ◆ 3M Silaprene® Bonded Sidewalls
- ◆ Satellite And Cable Hookups Into Living Room and Bedroom
- ◆ Thermal Pane Patio Door

### LIVING ROOM FEATURES

- ◆ Ceiling Fan with Light
- ◆ Lambrequin Style Valances with Curtains Throughout Except Bedroom
- ◆ Solid Wood Slideroom Fascia
- ◆ Shaw® R2X Stain and Soil Resistant System Carpeting in ALL Living Room and Bedroom Areas

### KITCHEN FEATURES

- ◆ Create-A-Breeze Fantastic Fan with Thermostat and Rain Sensor in Kitchen
- ◆ Stainless Steel 30" Over-the-Range Microwave with Built-In Vent
- ◆ Hidden Hinges
- ◆ Full Twin Stainless Steel Under-Mounted Sinks
- ◆ Crown Molding Complementing All Overhead Cabinets in Kitchen Area
- ◆ Free-Standing Table with Hidden Table Leaf Extension and Four (4) Chairs

### BEDROOM FEATURES

- ◆ (9) 8" Deep, Drawers in Main Bedroom Area
- ◆ Bedroom Roof Vent
- ◆ Serta® Winding Road 60" x 80" Queen Bed (Optional 72" x 80" Serta King Bed)
- ◆ 2" x 2" Finished Bed Base with Gas Lifts
- ◆ Side Ventilation Windows
- ◆ Ceiling Mounted, Individually Switched, Overhead Reading Lights
- ◆ Solid Wood Dresser Top (No Formica)
- ◆ Washer/Dryer Prep that Allows for Either Combination or Stack Washer/Dryer

### OPTIONS

- ◆ 30" Stainless Steel Convection Oven/Microwave
- ◆ 20 Cu. Ft. Electric French Door Refrigerator with Ice Maker
- ◆ Stainless Steel Dishwasher
- ◆ 72" x 80" Serta® King Mattress
- ◆ Serta® Bellagio Luxury Queen and King Mattress with Gel Memory Foam Top
- ◆ Create-A-Breeze Fantastic Fans with Thermostat and Rain Sensor in the Bedroom Area
- ◆ Central Vacuum System
- ◆ Theater Seating IPO Recliners (No charge)
- ◆ Power Theater Seating IPO Recliners
- ◆ Vinyl Flooring throughout, except in Bedroom and Slides (No charge)

### BATHROOM FEATURES

- ◆ 18" Tall Porcelain Toilet with Circular Flow Flush System
- ◆ 2", 10-Blade Bathroom Breeze Power Bath Vent with Convenient Wall Switch
- ◆ Bath Towel Rack and Toilet Paper Holder
- ◆ Large, Double Stack Bathroom Mirror Medicine Cabinet with Overhead Makeup Lights
- ◆ Linen Cabinet
- ◆ 48" One-piece Fiberglass Residential Shower with Large Seat, Upgraded Shower Head, Wrap-around Storage Ledges and Triple Sliding Glass Doors

### MISCELLANEOUS FEATURES

- ◆ 20 Gallon Electric Water Heater
- ◆ 12V Battery Disconnect
- ◆ Carbon Monoxide Detector
- ◆ LP Gas/Carbon Monoxide Detector
- ◆ Dometic® Comfort Control Center with Dual Zone Controller Heating and Cooling
- ◆ Smoke Detector
- ◆ Cedar Creek Switch Control Center
- ◆ Solid State 65 amp Power Converter
- ◆ 40,000 BTU Furnace
- ◆ Wall Mount Monitor Panel

- ◆ Ottoman with Hidden Storage
- ◆ 32" LED TV in Bedroom
- ◆ Second Ducted 15,000 High Performance Air Conditioner
- ◆ Awning Toppers
- ◆ Metal Wraps for Awning Toppers
- ◆ Heat Pump on Main Air Conditioner
- ◆ Splendide® Stackable Washer and Dryer (Wired individually to allow simultaneous wash and dry cycles)
- ◆ Thermal Pane Windows
- ◆ Additional 12' Slide Patio Awning
- ◆ Cadet Self-regulating Bedroom Wall Heater
- ◆ Ceiling Fan in Bedroom



## ALL THE COMFORTS OF HOME

*This amazing 12 volt Jensen Home Theater System includes full integration with smart devices including Apple's iPhone, iPod, iPad, plus Bluetooth streaming audio, video, MP3 and weather band information. A digital handshake between the 48" Jensen television and stereo, makes this system the RV industry's first, easy to use, stereo with all-digital connectivity. Control the stereo and interior/exterior speakers with your phone, or the remote from inside or outside the coach.*



# Cottage

**HATHAWAY EDITION  
WIDE BODY TRAVEL TRAILERS**

**BY CEDAR CREEK  
Forest River, Inc.**

501 Hawpatch Road ♦ Topeka, IN 46571 ♦ Ph: 260-593-2404 ♦ Fax: 260-593-2447  
Parts and Service Ph: 260-593-4000 ♦ Fax: 260-593-4013

Visit our website at: [www.forestriverinc.com/destinationtraveltrailers/cedarcreekcottage](http://www.forestriverinc.com/destinationtraveltrailers/cedarcreekcottage)

YOUR COTTAGE DEALER



All information contained in this brochure is believed to be accurate at the time of publication. However, during the model year, it may be necessary to make revisions and Forest River, Inc., reserves the right to make all such changes without notice, including prices, colors, materials, equipment and specifications as well as the addition of new models and the discontinuance of models shown in this brochure. Therefore, please consult with your Forest River dealer and confirm the existence of any materials, design or specifications that are material to your purchase decision.

All units are shipped F.O.B. Topeka, Indiana. **CONSULT YOUR LOCAL DEALER FOR WARRANTY INFORMATION.**

© 2015 Cottage by Cedar Creek, a Division of Forest River, Inc., a Berkshire Hathaway Company. All Rights Reserved. 2/16



### PRE-DELIVERY INSPECTION FACILITY

20,000 square feet of quality assurance. The bare essentials for a premium product. This state-of-the-art facility gives immediate daily feedback to production for quality assurance in every unit built.



**Forest River, Inc. encourages our customers to purchase their Forest River products from a local dealership whenever possible for the following reasons:**

- 1) Forest River, Inc. dealers are independently owned and operated businesses so priority service and scheduling is at their discretion and is often provided to customers that purchased their unit at that dealership.
- 2) Purchasing locally allows customers to establish meaningful relationships with a dealer, enhancing the RV experience through assistance with product questions, user tips or RV regulations for your state or country, and much more!
- 3) Canadian customers must meet requirements to bring an RV purchased out of the country to their home. These requirements may involve additional inspections and certifications, taxes and fees. Your local Canadian Dealer is a professional at meeting these requirements.
- 4) Scheduling timely warranty repairs and adjustments through a local dealership provides far greater flexibility and convenience to you, the customer!

It is the goal of Forest River, Inc. that all of our RV owners fully enjoy the RV experience and that customer satisfaction meets or exceeds their expectations!

### 24/7 EMERGENCY ROADSIDE ASSISTANCE

For a worry-free ownership experience Forest River includes one year of Coach-Net RV Technical & Roadside Assistance with each RV purchase. Whether new to the RV lifestyle or an experienced RV enthusiast, Forest River owners have 24/7 access to technical, operational and emergency road service coverage throughout the US & Canada. Coach-Net's fast, dependable service is just a phone call away.

**Coach-Net®**  
RV Technical & Roadside Assistance



**Learn More**  
Scan this barcode using a QR Reader on your smart phone to learn more about Forest River.



A Berkshire Hathaway company.

**FREE MEMBERSHIP**  
to Forest River Owners' Group

[www.forestriverfrog.com](http://www.forestriverfrog.com)

