

TOWABLES DEFINITIONS

GVWR (Gross Vehicle Weight Rating)

– is the maximum permissible weight of the unit when fully loaded. It includes all weights, inclusive of all fluids, cargo, optional equipment and accessories. For safety and product performance do NOT exceed the GVWR.

GAWR (Gross Axle Weight Rating)

– is the maximum permissible weight, including cargo, fluids, optional equipment and accessories that can be safely supported by a combination of all axles.

UVW (Unloaded Vehicle Weight)*

– is the typical weight of the unit as manufactured at the factory. It includes all weight at the unit's axle(s) and tongue or pin and LP Gas. The **UVW** does not include cargo, fresh potable water, additional optional equipment or dealer installed accessories.

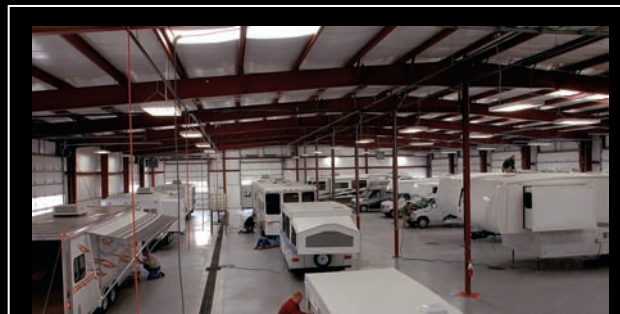
*Estimated Average based on standard build optional equipment.

CCC (Cargo Carrying Capacity)**

– is the amount of weight available for fresh potable water, cargo, additional optional equipment and accessories. CCC is equal to GVWR minus UVW. Available CCC should accommodate fresh potable water (8.3 lbs per gallon). Before filling the fresh water tank, empty the black and gray tanks to provide for more cargo capacity.

**Estimated average based on standard build optional equipment

Each Forest River RV is weighed at the manufacturing facility prior to shipping. A label identifying the unloaded vehicle weight of the actual unit and the cargo carrying capacity is applied to every Forest River RV prior to leaving our facilities. The load capacity of your unit is designated by weight, not by volume, so you cannot necessarily use all available space when loading your unit.



PRE-DELIVERY INSPECTION FACILITY

20,000 square feet of quality assurance. The bare essentials for a premium product. This state-of-the-art facility gives immediate daily feedback to production for quality assurance in every unit built.

24/7 EMERGENCY ROADSIDE ASSISTANCE

For a worry-free ownership experience

Coach-Net®

RV Technical & Roadside Assistance
Forest River includes one year of Coach-Net RV Technical & Roadside Assistance with each RV purchase. Whether new to the RV lifestyle or an experienced RV enthusiast, Forest River owners have 24/7 access to technical, operational and emergency road service coverage throughout the US & Canada. Coach-Net's fast, dependable service is just a phone call away.



Forest River, Inc. encourages our customers to purchase their Forest River products from a local dealership whenever possible for the following reasons:

- 1) Forest River, Inc. dealers are independently owned and operated businesses so priority service and scheduling is at their discretion and is often provided to customers that purchased their unit at that dealership.
- 2) Purchasing locally allows customers to establish meaningful relationships with a dealer, enhancing the RV experience through assistance with product questions, user tips or RV regulations for your state or country, and much more!
- 3) Canadian customers must meet requirements to bring an RV purchased out of the country to their home. These requirements may involve additional inspections and certifications, taxes and fees. Your local Canadian Dealer is a professional at meeting these requirements.
- 4) Scheduling timely warranty repairs and adjustments through a local dealership provides far greater flexibility and convenience to you, the customer!

It is the goal of Forest River, Inc. that all of our RV owners fully enjoy the RV experience and that customer satisfaction meets or exceeds their expectations!

FREE MEMBERSHIP
to Forest River Owners' Group

www.forestriverfrog.com



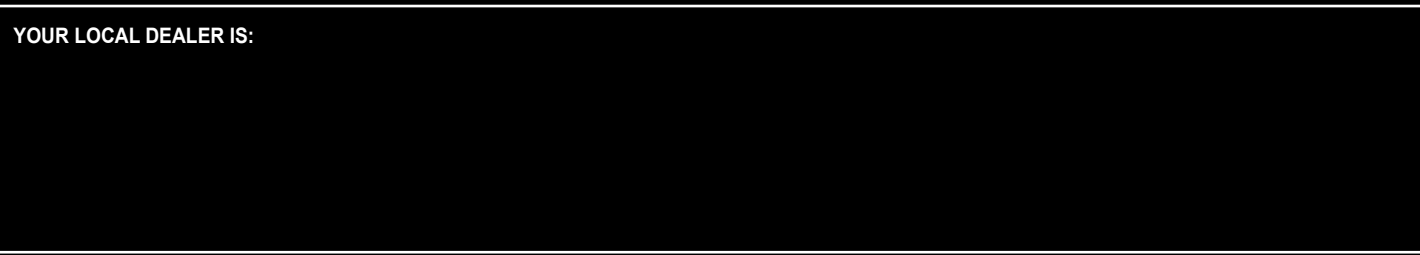
Learn More
Scan this barcode using a QR Reader on your smart phone to learn more about Forest River.



A Berkshire Hathaway company.

All information contained in this brochure is believed to be accurate at the time of publication. However, during the model year, it may be necessary to make revisions and Forest River, Inc., reserves the right to make all such changes without notice, including prices, colors, materials, equipment and specifications as well as the addition of new models and the discontinuance of models shown in this brochure. Therefore, please consult with your Forest River, Inc. dealer and confirm the existence of any materials, design or specifications that are material to your purchase decision.

YOUR LOCAL DEALER IS:



B U I L T F O R T H E O P E N R O A D



SABRE • 2412 CENTURY DRIVE • GOSHEN, INDIANA 46528 • 574.642.3697 • WWW.FORESTRIVERINC.COM/SABRE
© 2015 SABRE, A DIVISION OF FOREST RIVER, INC., A BERKSHIRE HATHAWAY COMPANY, ALL RIGHTS RESERVED
LIT NO. SBR - 01R/063016

SABRE INTERIOR FEATURES



315RE



365MB



STANDARD ON SABRE



315RE / 330CK



365MB



360QB



STANDARD ON SABRE



360QB



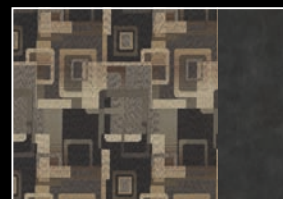
365MB



EXPRESSO



SANDSTONE



PEWTER



360QB



365MB



360QB

SABRE LITE INTERIOR FEATURES



25RL



28RL



STANDARD ON SABRE AND SABRE LITE



AVAILABLE ON SABRE LITE



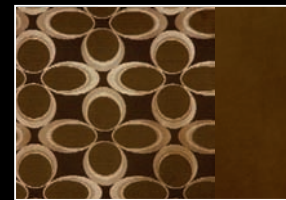
28RL



25RL



EXPRESSO



SANDSTONE



PEWTER



STANDARD ON SABRE LITE



28RL

SABRE AND SABRE LITE FLOORPLANS

SABRE FLOORPLANS



295CK

See definitions on back cover

UVW	CC	HITCH	TRUE LENGTH	HEIGHT	AXLES	FRESH WATER	GRAY WATER	WASTE WATER
9,932	3,828	1,760	35' 0"	12' 10"	6,000	60**	84	42



315RE

UVW	CC	HITCH	TRUE LENGTH	HEIGHT	AXLES	FRESH WATER	GRAY WATER	WASTE WATER
10,309	3,546	1,855	36' 2"	12' 10"	6,000	60**	84	42



330CK

UVW	CC	HITCH	TRUE LENGTH	HEIGHT	AXLES	FRESH WATER	GRAY WATER	WASTE WATER
10,309	3,561	1,870	36' 10"	12' 10"	6,000	60**	84	42



335TB

UVW	CC	HITCH	TRUE LENGTH	HEIGHT	AXLES	FRESH WATER	GRAY WATER	WASTE WATER
10,914	3,121	2,035	37' 11"	12' 10"	6,000	60**	84	42



360QB

UVW	CC	HITCH	TRUE LENGTH	HEIGHT	AXLES	FRESH WATER	GRAY WATER	WASTE WATER
12,264	3,236	1,952	41' 10"	12' 10"	7,000	60**	84	84

SABRE FLOORPLAN



365MB

UVW	CC	HITCH	TRUE LENGTH	HEIGHT	AXLES	FRESH WATER	GRAY WATER	WASTE WATER
12,994	2,506	2,390	42' 5"	12' 10"	7,000	60**	84	42

SABRE LITE FLOORPLANS



25RL

UVW	CC	HITCH	TRUE LENGTH	HEIGHT	AXLES	FRESH WATER	GRAY WATER	WASTE WATER
7,224	4,256	1,320	28' 8"	12' 7"	5,200	37*	42	42



28RL

UVW	CC	HITCH	TRUE LENGTH	HEIGHT	AXLES	FRESH WATER	GRAY WATER	WASTE WATER
8,439	3,346	1,625	32' 6"	12' 7"	5,200	55*	42	42



28BH

UVW	CC	HITCH	TRUE LENGTH	HEIGHT	AXLES	FRESH WATER	GRAY WATER	WASTE WATER
8,509	3,181	1,530	33' 4"	12' 7"	5,200	55*	84	42



29RE

UVW	CC	HITCH	TRUE LENGTH	HEIGHT	AXLES	FRESH WATER	GRAY WATER	WASTE WATER
8,864	2,626	1,330	33' 0"	12' 7"	5,200	55*	42	42

SABRE AND SABRE LITE FEATURES AND OPTIONS



Outside kitchen is equipped with refrigerator and sink in slam-latch compartment



Aluminum "Tread Lite" steps for safe and easy access



Upgraded EQUA FLEX suspension increases vertical travel for smooth towing



JT Strong Arm Stabilizers standard (Sabre only)



Industry-leading unobstructed pass-thru storage



Convenience center with winterization, water heater by-pass and black tank flush

EXTERIOR

- Painted aerodynamic fiberglass front cap with LED hitch lighting
- High gloss gelcoat fiberglass sidewalls (Enhanced fiberglass sidewalls standard on Sabre Lite)
- LED lights standard throughout
- Upgraded EQUA FLEX suspension system
- "Correct Track" axle alignment system
- Frameless windows 80% tint (Optional on Sabre Lite)
- Battery disconnect switch
- 2 - 30 lb. LP tanks
- 30" entry door
- Oversized fold-away entry assist handle
- Exterior roof ladder
- Under carriage spare tire carrier (bumper mount standard on Sabre Lite)
- Convenience center with winterization, water heater bypass and black tank flush
- Easy access low point drains
- Hot and cold outside shower
- 10 gallon DSI gas/electric hot water heater with quick recovery (6 gallon standard on Sabre Lite)
- Heated and enclosed underbelly
- Locking slam-latch baggage doors
- Electric awning with adjustable arms and LED awning night lights against sidewall
- Marine grade outside speakers
- Electric powered front and rear stabilizer jacks
- JT Strong Arm Stabilizers on front jacks standard (Sabre only)
- Easy-to-access Super Lube System on axles
- Nitrous filled steel belted radial tires with roadside assistance
- 16" aluminum rims with E-rated tires (Sabre)
- 15" aluminum rims with D-rated tires (Sabre Lite)
- Accessory hitch standard (N/A on Sabre Lite)
- 55 AMP power converter with smart fan cooling
- 50 AMP service detachable power cord wired and framed for second A/C (Optional on Sabre Lite)
- Aluminum "Tread Lite" steps

INTERIOR

- 48" HD flat panel TV (40" HD flat panel TV standard on Sabre Lite)
- CD/DVD/AM/FM blue tooth stereo system
- Electric fireplace (Optional on Sabre Lite)
- 35,000 BTU furnace with automatic ignition
- 15,000 BTU air conditioner ducted throughout
- Hand rubbed solid maple cabinet doors
- Full extension ball bearing drawer glides
- Solid core cabinet stiles pre-drilled and screwed cabinetry
- Hardwood slide-out fascia
- Hardwood step treads to bedroom (Congoleum step treads standard on Sabre Lite)
- Congoleum wood plank flooring with cold crack warranty
- Residential style window treatments
- Day/Night shades (Night shades standard on Sabre Lite)
- Residential style tri-fold hide-a-bed sofa
- Wall hugger theatre seats (Swivel rocker recliner standard on Sabre Lite)
- Residential Shaw nylon carpet with R2X™ with pad
- Electric slides with individual switches
- Digital thermostat

KITCHEN

- Hand rubbed solid maple cabinet doors
- Solid surface countertops with sink covers standard on Sabre (Sabre Lite optional)
- Stainless steel appliances (N/A on Sabre Lite)
- Deep 50/50 stainless kitchen sink
- Residential size overhead cabinets
- Residential style kitchen faucet with pullout sprayer
- Residential style microwave
- Residential style pantry (N/A on Sabre Lite)
- 8 cubic ft. double door refrigerator
- Oversized oven standard at 22"
- Free standing dinette (chairs include seat storage on most models)

BATHROOM

- Residential 30" x 48" one-piece fiberglass shower on most Sabre models (Neo radius corner shower standard on Sabre Lite)
- Skylight over shower
- Waterproof shower light
- Power vent fan
- Residential style medicine cabinet
- Heat duct and A/C vent in bathroom
- Extra large lav top with stainless steel sink
- Porcelain toilet with foot flush and power flush jets

BEDROOM

- True 60" x 80" queen mattress
- Residential bedspread with two pillow shams
- Large under bed storage
- Bedroom heat registers
- Closeable A/C vents
- Bedroom speakers
- TV and cable prep
- Large wardrobe closet with extra shoe shelf storage (N/A on Sabre Lite)
- Washer and dryer prep on most models
- Bed side night stands on all models (N/A on King Bed Option)

CONSTRUCTION

- 5-sided welded aluminum substructure
- Laminated aluminum main floor on Sabre Lite only
- Residential roof trusses 16" OC
- 3/8" thick walk-on roof decking
- One-piece roof membrane with 12 year warranty
- Insulation values - walls (R-9) roof and floor (R-28) (Walls (R-9) roof and floor (R-14) on Sabre Lite)

SABRE OPTIONS

- 4-point one-touch electric auto leveling
- 6-point one-touch electric auto leveling (360QB and 365MB)
- Dual pane windows (frameless)
- Trailair rota flex rubberized pin box
- 2nd A/C 13.5 bedroom
- King size bed (bedside models only)
- Night rola shades in living area
- Two leather rocker recliners IPO theatre seating
- 6-panel woodgrain refrigerator door
- 12 cubic side-by-side refrigerator (360 QB)
- Tri-fold sleeper sofa IPO lower bunk (360 QB)

SABRE LITE OPTIONS

- Electric fireplace
- Trailair rota flex rubberized pin box
- 50 AMP service with A/C prep
- 2nd A/C 13.5 bedroom (Req 50 AMP option)
- Solid surface countertops
- Dual pane windows (non-frameless)
- Frameless windows

* For your benefit, at Sabre we give "True Length" from nose-of-cap to tip-of-bumper. Most manufacturers list the much shorter towing length.
 ** Includes 10 gallon water heater capacity
 * Includes 6 gallon water heater capacity