

SIERRA

DESTINATION SERIES

SIERRA



DESTINATION SERIES



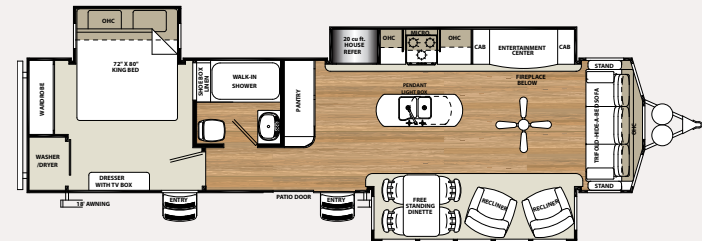




401FLX



CARBON INTERIOR



Sierra's 401FLX offers a spacious layout with a full bank of windows to bring the outside in. It comes standard with an oversize kitchen island to meet all your food preparation needs. The focal point of this floorplan is the beautifully crafted entertainment center which features a 40" flat screen TV with premium sound bar and Sony DVD player. With a king bed standard and a full walk in shower with seat this floorplan promises to be the crown jewel of any destination.

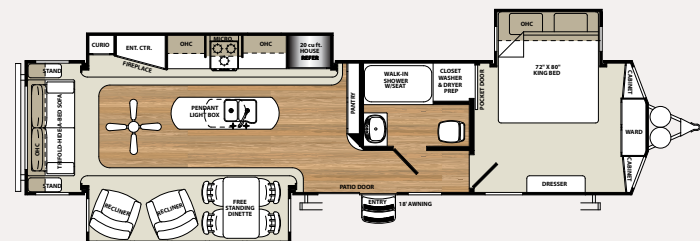




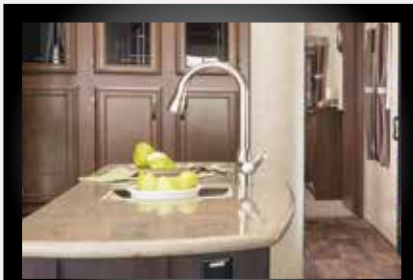
393RL



MERLOT INTERIOR



With the Sierra series you will experience the pride of ownership. And who wouldn't be proud to own the Sierra393RL, this floorplan will provide you with effortless living at you favorite destination. From the ground up this Sierra floorplan is the finest in spacious, luxurious living. It has been engineered and decorated for residential style and comfort. The kitchen is well designed with plenty of storage. The living area is large, bright and comfortable. This floorplan, like all floorplans in the Sierra Destination series, provide you with a great value without a sacrifice in quality, comfort, or amenities.



High rise faucet with undermount sink and pull out sprayer.



The upgraded and intricately detailed slide-out fascia.



Optional theater seats in place of recliners.



Full extension, soft close ball bearing drawer guides.



The fireplace warms and is a great focal point for the living area.



SIERRA's control center allows you to monitor tanks and other systems quickly and easily.



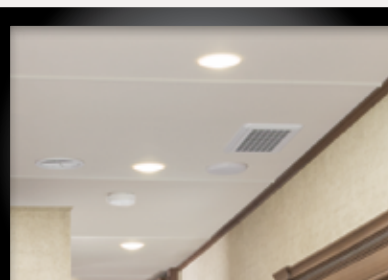
Serta™ Memory Foam mattress is a Forest River exclusive feature.



Flatscreen LED HDTV with premium soundbar and DVD player.



Contemporary ceiling fan.



LED interior lighting. Our LED lights are 40% more efficient than incandescent lights.

ISLAND KITCHEN

THE SIERRA ISLAND KITCHEN PROVIDES YOU WITH AN ABUNDANCE OF COUNTERTOP SPACE. (PER FLOORPLAN)

SIERRA EXTERIOR FEATURES



60" Patio door with tinted glass and vertical blinds.



Gel coated fiberglass protects from UV rays and prevents yellowing and cracking.



The radius roof line of the Sierra Destination series allows for a 94" interior height.



Optional quadruple entry steps for safer and easier entry and exit.



Ducted 15K BTU air conditioner with "Quiet Cool"



Large tinted windows with 80/20 UV prohibitor.



2-30 Lb. LP tanks with ABS Tank cover.



Heated and enclosed underbelly protects your coach and improved airflow allows for a sturdier ride.



Optional outside kitchen on the 402QB.



Drip rail with extra long drip spouts help prevent black streaking.



16" Radial tires-E Rated

EXTERIOR FEATURES

- High gloss gel coated color matched exterior fiberglass
- Enclosed and heated dump valves
- Large tinted windows with 80/20 UV prohibitor
- Dexter auto adjust brakes
- Hickory Springs™ radius triple steps with 9" riser (no pinched fingers)
- Dometic™ "One-Touch" electric awning with adjustable arms, and integrated LED light
- 16" Radial tires-E Rated
- Automotive-style fender skirts
- Hitch light
- Porch light with interior switch
- Patio recreation light with interior switch
- 30 lb. double LP tanks with auto change over
- 2 exterior speakers
- Rain gutters with extra long drip spouts (prevents black streaking)
- Exterior folding grab handle
- 60" Patio door

INTERIOR FEATURES

- 94" interior height with 6'4" slide heights
- Radius "barreled" ceiling
- Residential stain resistant carpet
- Rustic Plank pattern Beauflor® linoleum
- Swivel glider recliners
- Four color coordinated interiors (Carbon, Merlot, Pebble, Beachwood)
- Full extension ball bearing drawer glides
- Stone cast under mounted kitchen sink
- Washer/dryer prep (select floorplans)
- Handmade cabinetry with screwed lumber core stile construction
- Residential countertops
- Dual zone A/C prep (living room and bedroom)
- Recessed residential LED lighting throughout
- Colored shower surround with etched tile pattern
- Upgraded adjustable shower head with shelf
- Accent paneling in slideouts
- Accent lighting over dinette
- Walk-in shower (select models)
- Crown molding over kitchen cabinets
- Extra large picture windows throughout
- Vented side windows in slideouts

- TV antenna with booster
- Solid wood drawer fronts with birch sides
- Upgraded raised panel cabinet doors with designer rails
- Bedroom slideout fascia
- Serta® memory foam mattress
- 20 cu. ft. stainless steel refrigerator
- Stainless steel kitchen package
- 40" LED HDTV with Sony DVD and premium soundbar
- Designer window treatment accented per decor
- Ceiling fan
- Hide-a-bed sofa with tri-fold
- Residential carpeting
- Center mounted A/C unit for even cooling
- Quilted bedspread
- Home decor package
- Trash receptacle in kitchen

APPLIANCES/SYSTEMS

- Ducted Dometic® 15K A/C with quiet cool
- Dual zone thermostat for living room and bedroom A/C
- Floor ducted 35,000 BTU furnace
- Three burner High output range with 22" oven
- 20 cu. ft. stainless steel refrigerator
- Interior monitor panel for holding tanks
- Interior thermostat for heating and cooling
- Flush floor hydraulic slideouts (per floorplan)
- Satellite and cable hookup with RG-6 cable for high quality picture
- Porcelain foot flush toilets
- Full coach water filtration system
- 10 Gal. DSI water heater
- 65 Amp converter
- Water filter system
- Fantastic fan in bath

CONSTRUCTION

- Welded aluminum-framed, vacuum bonded laminated superstructure
- 2" x 3" floor joists 12" on center
- 5/8" tongue & groove plywood floor decking
- 3/8" roof decking (full walk-on roof)
- Cambered powder coated frame with rust prohibitor

- Fully enclosed heated underbelly
- 5" truss roof rafters
- R-10 sidewall construction

POPULAR OPTIONS

- Solid surface countertops in kitchen
- Free-standing dinette with 4 chairs
- Washer and dryer (per floorplan)
- Sofa IPO bottom bunk (per floorplan)
- Second air conditioner-bedroom
- Fantastic fan with power hood operated with wall switch
- 12 Volt heated holding tanks
- R-38e Insulation package
- Tile pattern Beauflor® linoleum
- Central vacuum
- Bedroom ceiling fan
- Roof ladder

OPTIONAL POLAR TECH PACKAGE

- Thermal pane windows
- Heated holding tanks
- R-38e roof & all floors insulation
- 40K BTU furnace
- Double fiberglass insulation in roof & floor

FOR YOUR SAFETY

- Smoke alarm
- Fire extinguisher
- Breakaway switch (battery hook-up required)
- Dead-bolt lock on entry door
- LP/CO₂ gas detector
- Fire escape windows

SIERRA SIGNATURE PACKAGE

- Residential stain resistant carpet
- Serta® memory foam mattress
- Radius 94" cathedral ceilings
- "One Touch" Dometic® electric awning w/LED lights
- Stainless steel kitchen package
- 15K BTU air conditioner with quiet cool
- King bed standard
- Ceiling fan in living room
- Décor package
- 50 amp service
- High gloss gel coated fiberglass color matched exterior
- 10 gal. G/E water heater w/DSI
- Residential pullout kitchen faucet
- 20 cu. ft. stainless steel refrigerator
- Tinted patio door
- 40" LED HDTV with Sony DVD and premium soundbar
- Washer/dryer prep (where available)
- Fantastic fan in bathroom
- Tri-fold hide-a-bed
- "Rustic Wood" Beauflor® linoleum



CARBON INTERIOR



MERLOT INTERIOR



PEBBLE INTERIOR



BEACHWOOD INTERIOR



THE SIERRA SUPERSTRUCTURE

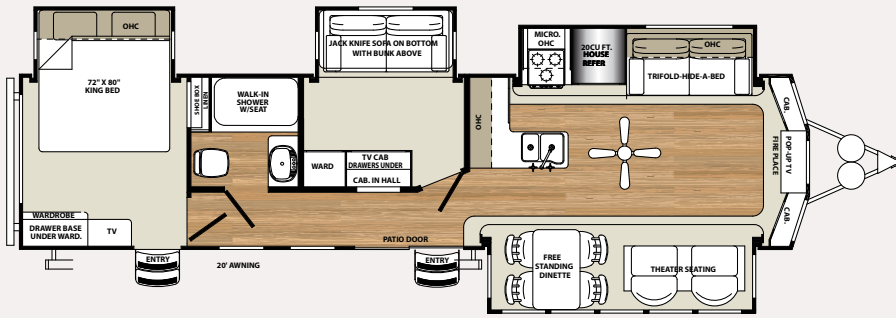
The SIERRA has a Welded Aluminum Superstructure that is regarded as the industry's finest, pictured left is the heavier gauge aluminum tubing used by SIERRA vs. The competitions lighter gauge aluminum.

- A. ROLLED ALUMINUM SIDE SKIRTING
- B. SAFETY GLASS TINTED WINDOWS (80%)
- C. DUCTED 15K BTU AIR CONDITIONING
- D. DEXTER AXLES WITH AUTO ADJUST BRAKES
- E. LAMINATED VACUUM BONDED ALUMINUM SIDEWALLS
- F. E RATED RADIAL TIRES
- G. HICKORY SPRINGS™ RADIUS ENTRY STEPS
- H. SEAMLESS RUBBER ROOF (12 YR. WARRANTY)
- I. BLOCK FOAM INSULATION
- J. RESIDENTIAL STAIN RESISTANT CARPET W/PADDING
- K. 3/8" ROOF DECKING (FULL WALK-ON ROOF)
- L. 5/8" TONGUE AND GROOVE PLYWOOD FLOORING
- M. ENCLOSED HEATED UNDERBELLY
- N. I-BEAM POWDER-COATED FRAME
- O. 60" PATIO DOOR WITH TINTED GLASS AND VERTICAL BLINDS
- P. RADIUS 94" CATHEDRAL CEILINGS
- Q. SLEEK RADIUS ROOF
- R. HIGH GLOSS GEL-COATED COLOR MATCHED FIBERGLASS EXTERIOR
- S. TWO (2) 30 LB. LP TANKS

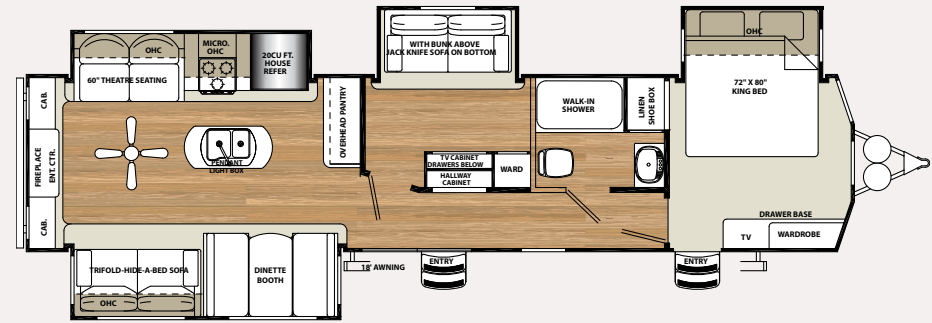


The Sierra floorplan lineup is one of the most diverse on the market. We offer some of the most popular floorplans in the industry, but we also offer our customers more. We offer floorplans that are designed from the ground up to be the most functional, efficient and luxurious RV's on the market.

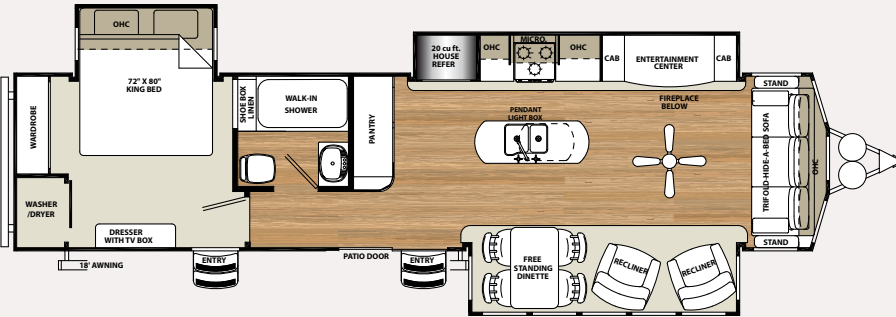
385FKBH



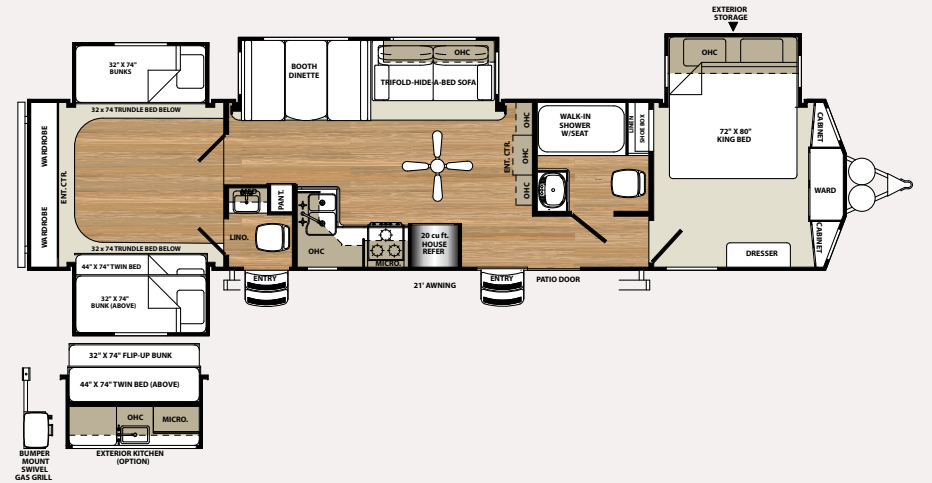
391SAB



401FLX

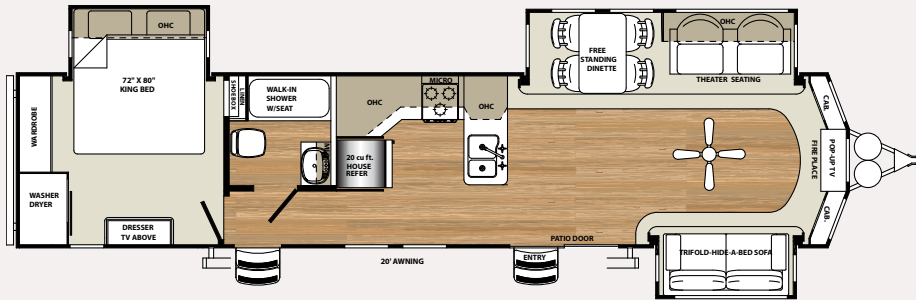


402QB

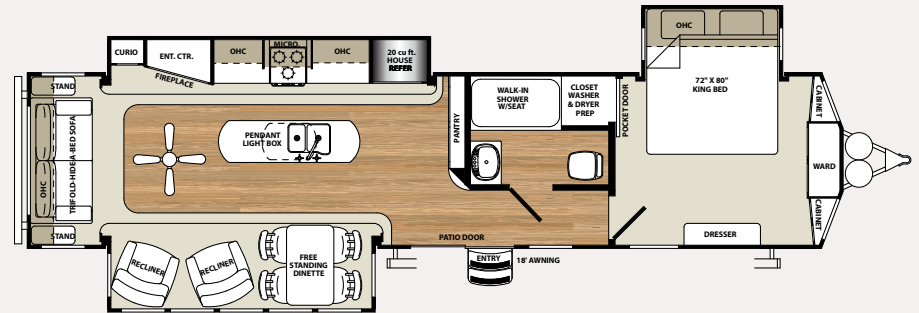


SIERRA

393CK



393RL



SIERRA DESTINATION SERIES SPECIFICATIONS

MODEL	385FKBH	391SAB	393CK	393RL	401FLX	402QB
HITCH	1,615	1,406	1,245	1,379	1,841	1,180
UVW	11,049	11,062	10,287	10,726	10,830	11,289
GVWR	13,615	13,406	13,245	13,379	13,841	13,180
CARGO	2,566	2,344	2,958	2,653	3,011	1,891
LENGTH	40' 3"	41' 6"	42' 1"	41' 6"	40' 10"	43' 0"
HEIGHT	12' 7"	12' 7"	12' 7"	12' 7"	12' 7"	12' 7"
AWNING	20'	18'	20'	19'	17'	20'
BLACK	33	30	33	50	30	100
GRAY	66	75	66	83	80	133
FRESH	60	60	60	60	60	60

See back cover for more information on weights.



PRE-DELIVERY INSPECTION FACILITY

20,000 square feet of quality assurance. The bare essentials for a premium product. This state-of-the-art facility gives immediate daily feedback to production for quality assurance in every unit built.



Forest River, Inc. encourages our customers to purchase their Forest River products whenever possible for the following reasons:

- 1) Forest River, Inc. dealers are independently owned and operated businesses so priority service and scheduling is at their discretion and is often provided to customers that purchased their unit at that dealership.
- 2) Purchasing locally allows customers to establish meaningful relationships with a dealer, enhancing the RV experience through assistance with product questions, user tips or RV regulations for your state or country, and much more!
- 3) Canadian customers must meet requirements to bring an RV purchased out of the country to their home. These requirements may involve additional inspections and certifications, taxes and fees. Your local Canadian Dealer is a professional at meeting these requirements.
- 4) Scheduling timely warranty repairs and adjustments through a local dealership provides far greater flexibility and convenience to you, the customer!

It is the goal of Forest River, Inc. that all of our RV owners fully enjoy the RV experience and that customer satisfaction meets or exceeds their expectations!

24/7 EMERGENCY ROADSIDE ASSISTANCE

For a worry-free ownership experience Forest River includes one year of Coach-Net RV Technical & Roadside Assistance with each RV purchase. Whether new to the RV lifestyle or an experienced RV enthusiast, Forest River owners have 24/7 access to technical, operational and emergency road service coverage throughout the US & Canada. Coach-Net's fast, dependable service is just a phone call away.

Coach-Net®

RV Technical & Roadside Assistance

FREE MEMBERSHIP

to Forest River Owners' Group

www.forestriverfrog.com



SIERRA

GVWR (Gross Vehicle Weight Rating) - is the maximum permissible weight of the unit when fully loaded. It includes all weights, inclusive of all fluids, cargo, optional equipment and accessories. For safety and product performance do NOT exceed the GVWR.

GAWR (Gross Axle Weight Rating) - is the maximum permissible weight, including cargo, fluids, optional equipment and accessories that can be safely supported by a combination of all axles.

UVW (Unloaded Vehicle Weight)* - is the typical weight of the unit as manufactured at the factory. It includes all weight at the unit's axle(s) and tongue or pin and LP Gas. The UVW does not include cargo, fresh potable water, additional optional equipment or dealer installed accessories.

*Estimated Average based on standard build optional equipment.

CCC (Cargo Carrying Capacity)** - is the amount of weight available for fresh potable water, cargo, additional optional equipment and accessories. CCC is equal to GVWR minus UVW. Available CCC should accommodate fresh potable water (8.3 lbs per gallon). Before filling the fresh water tank, empty the black and gray tanks to provide for more cargo capacity.

** Estimated average based on standard build optional equipment

Each Forest River RV is weighed at the manufacturing facility prior to shipping. A label identifying the unloaded vehicle weight of the actual unit and the cargo carrying capacity is applied to every Forest River RV prior to leaving our facilities.

The load capacity of your unit is designated by weight, not by volume, so you cannot necessarily use all available space when loading your unit.

All information contained in this brochure is believed to be accurate at the time of publication. However, during the model year, it may be necessary to make revisions and Forest River, Inc., reserves the right to make all such changes without notice, including prices, colors, materials, equipment and specifications as well as the addition of new models and the discontinuance of models shown in this brochure. Therefore, please consult with your Forest River dealer and confirm the existence of any materials, design or specifications that are material to your purchase decision.



Learn More

Scan this barcode using a QR Reader on your smart phone to learn more about Forest River.



A Berkshire Hathaway company.

Forest River, Inc.
2012 Century Dr.
Goshen, IN 46528
(574) 389-4600
www.forestriverinc.com/Sierra
www.forestriveraccessories.com

YOUR SIERRA DEALER