

Cedar Creek

SILVERBACK EDITION

FIFTH WHEELS

Cedar Creek
SILVERBACK EDITION



THE SMART CHOICE FOR THE EXPERIENCED RV'ER



Cedar Creek

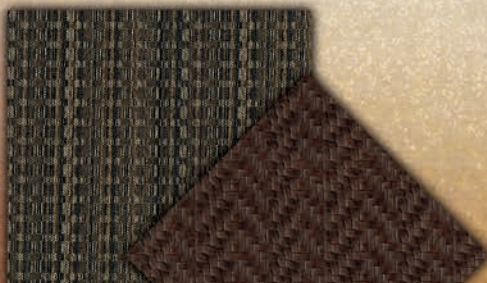
SILVERBACK EDITION

CEDAR CREEK SILVERBACK EDITION PACKAGE

- 48" LED TV in living room (N/A 37BH,31RK)
- Jensen 12 volt CD/DVD, AM/FM, Bluetooth, MP3/USB stereo system with video streaming capabilities, 4 ceiling mount speakers and two waterproof exterior speakers
- New Maple hardwood cabinet doors
- New ceiling cove molding
- New wallboard
- Upgraded solid wood slide room fascia in living room
- Rebond carpet pad
- Electric fireplace
- Updated Shaw carpet and Congoleum Diamondfloor™ flooring
- La-Z-Boy® sofa and recliners with lifetime warranty on parts
- Dirt Devil central vacuum system
- New recessed stove top with glass cover and LG solid surface handle
- New full panel backsplash
- Upgraded kitchen faucet
- New stainless steel sinks
- New self-closing drawer guides
- 32" LED TV in bedroom
- New bedding and window treatments in bedroom
- New larger mirrored closet doors
- Medicine cabinet in bathroom
- New quad entry step
- Hehr automotive frameless windows
- New friction hinge entry door
- Black A&E metal weather shield for awning
- New pearl front cap with new upgraded graphics package
- LED lighting under awning
- 50 amp cord reel
- 3 battery compartment

DECOR

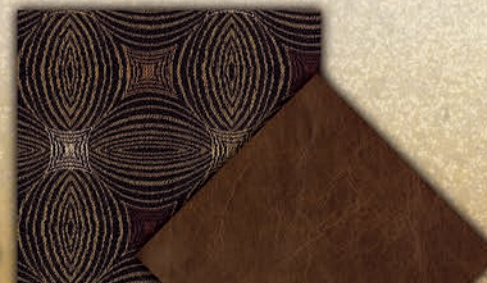
STORM



COFFEE



PEPPERCORN



THE SILVERBACK ADVANTAGE

The New Cedar Creek Silverback Edition surrounds you in luxury. Experience rich interiors, brand name appliances and our famous all aluminum super-structure... a few of the many standard hallmarks of quality and value Cedar Creek is known for.



33IK



33IK

Cedar Creek

SILVERBACK EDITION

THE PERFECT CHOICE FOR LIFE'S GREAT ADVENTURES

29RE This popular rear living room provides plenty of comfortable living space for visiting family and friends. The La-Z-Boy® hide-a-bed Comfort Sleep sofa converts to an additional sleeping area for your guests. The beautiful rear entertainment wall, with brick fireplace surround, brings an inviting and residential look to this spacious floorplan.





31RK This open rear kitchen has an abundance of storage and space. This floorplan can also accommodate our optional 11 cu. ft. electric only refrigerator, 13 cu. ft. gas/electric side-by-side refrigerator or 19 cu. ft. electric only refrigerator (pictured above.)

L A **Z** B O Y[®] **RECLINERS AND THEATRE SEATING**



MAHOGANY



BEIGE



Live life comfortably with our standard La-Z-Boy[®] sofa sets. Choose Beige or Mahogany recliners, or upgrade to our optional theater seating for residential comfort that lasts a lifetime.



37RL This rear living area is designed for entertaining, with seating for up to six people. Comfortable La-Z-Boy® residential furniture has a lifetime warranty on all parts.

The kitchen is the center of daily activity. The 37BH is loaded with storage, including this abundant floor-to-ceiling pantry. It's available with your choice of an optional 11 cu. ft. electric refrigerator, 13 cu. ft. gas/electric side-by-side refrigerator or 19 cu. ft. electric refrigerator.

OUTDOOR CONVENIENCE

This standard outside kitchen provides the ultimate in outdoor convenience. With a sink, faucet, enamel metal weatherproof cabinetry, refrigerator, microwave and RVQ gas grill all within easy reach, you can cook, clean-up, and store everything you need without missing all the outdoor fun!





37BH This family-friendly bunk house is big on storage space. The standard 12' Super Sofa with two sliding table tops creates a comfortable lounge area for up to eight people or a pull-out sleeper sofa for extra friends.



The 37BH bunk house provides ample living space for your guests or family. Silverback's exclusive cathedral ceilings in the rear bunkroom slide-room provide plenty of headroom above the top bunk. Extra wide bunks can accommodate the choice of an optional tri-fold Comfort Sleep sofa, or a jackknife sofa, to maximize sleeping space.

A convenient second bathroom is accessible from the bunk house.



CEDAR CREEK'S FAMOUS ALL ALUMINUM SUPER STRUCTURE

CHECK OUT OUR CONSTRUCTION VIDEO AT WWW.FORESTRIVERINC.COM/SILVERBACK

ROOF - CALCULATED R-VALUE = R-38

- ◆ Roof - calculated R-Value = 38
- ◆ Radiant shield insulation, 97% reflective/3% emission (Valued at R-38)

- ◆ 2 Layers of residential home Eco-Batt glasswool insulation (Valued at R-14)
- ◆ Triple layer insulation supplements the cohesive retention factors of roof decking and rubber membrane
- ◆ Attic vents
- ◆ Full length 3/8" wood roof decking for a full walk on roof

- ◆ 2" x 2" - 16" OC 5" Aluminum truss roof rafters
- ◆ 2-Ply Tuff Ply rubber roof membrane with built-in fire retardant and 12 year warranty
- ◆ Full length drip rails from the front to the rear of the unit
- ◆ Roof is bolted to sidewall with 5/16" x 3-1/2" carriage bolts
- ◆ 5" Radius roof



COLD ROOM TESTED

- ◆ Calculated R-value = R-38 in the roof and floor
- ◆ 12 Volt heating pads on all tanks
- ◆ 2 Layers of residential insulation
- ◆ 1 Layer of radiant shield Thermo-foil



Cedar Creek
SILVERBACK EDITION

**FLOORS & UNDERBELLY -
CALCULATED R-VALUE = R-38**

- ◆ Cambered I-beam frame (10" on 29RE, 29IK; 12" on all others) with large support outriggers and full length welds
- ◆ Fully enclosed underbelly with 4' x 8' ABS removable panels for easy access to the tanks
- ◆ Radiant shield insulation, 97% reflective/3% emission (Valued at R-38)
- ◆ 2 Layers of residential home Eco-Batt glasswool insulation (Valued at R-14)
- ◆ 12 V Heating pads on ALL tanks
- ◆ Handmade 3" aluminum frame floor with in-floor heat ducting
- ◆ 5/8" tongue and groove plywood floor decking held down by Silaprene super adhesive and screws every 6" in floor joists
- ◆ Triple layer insulation enhances the protective values of plywood, vinyl, carpet, carpet pads, tank heaters, etc..

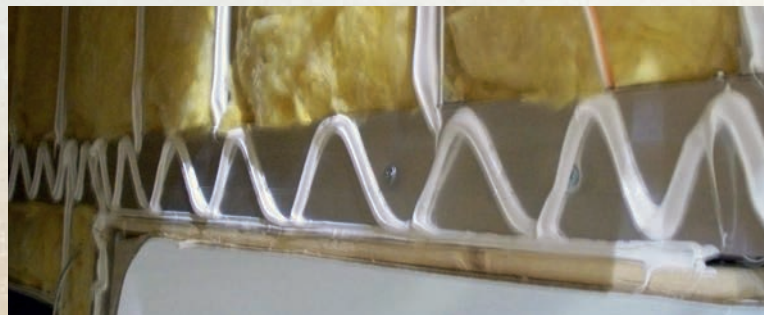
- ◆ "True" Classic Performance Plus Gelcoat on all exteriors - the best of the best in fiberglass. Don't accept "Hi-Gloss Fiberglass" or "Gel-Coated" sidewalls - only True Performance Plus Gelcoat stands the test of time.
- ◆ All 1-1/2" thick baggage doors and entry doors are made out of "True" Classic Performance Gelcoat to prevent uneven aging of your unit!
- ◆ Sidewalls are bolted to the floor with 5/16" x 6-1/2" carriage bolts at each outrigger
- ◆ Glued R-7 Eco-Batt glasswool insulation, expanded to full capacity within the sidewall frame
- ◆ Designed by Cedar Creek, a unique slide out seal system for tighter, stronger water protection - first of its class - compare it!
- ◆ Slide rooms insulated on all five sides



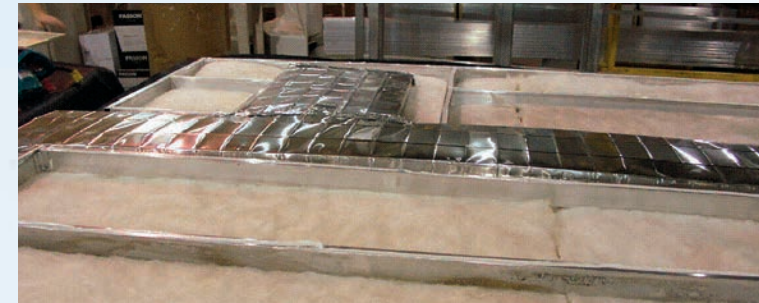
Aluminum studded sidewalls and roof trusses on 16" centers or less

**2" THICK SIDE WALLS -
CALCULATED R-VALUE = R-9**

- ◆ Cedar Creek's famous all aluminum super-structure. Handmade 2"x 2"/16" (or less) on center sidewalls and individually fastened custom "L" brackets combined with 3M® Silaprene super adhesives for a strong flexible frame without welding or lamination. (475 PSI at 2" per minute) - because we depend on the frame for our strength!



Thick Silaprene super adhesive (475 PSI) guarantees solid contact between the True bonded gelcoat and aluminum frame without lamination



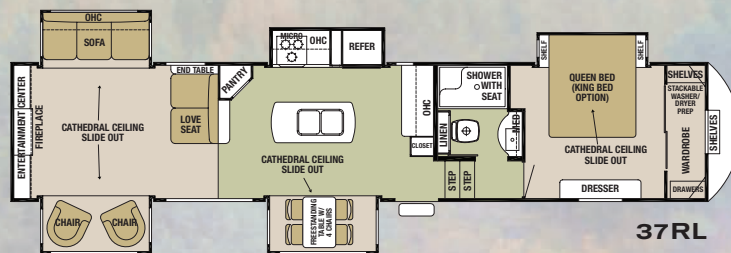
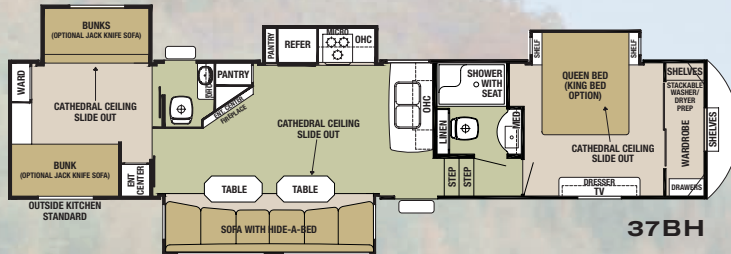
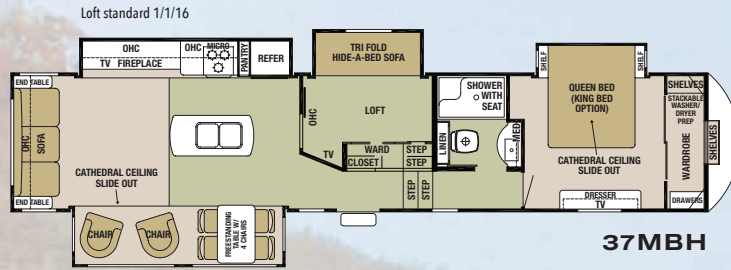
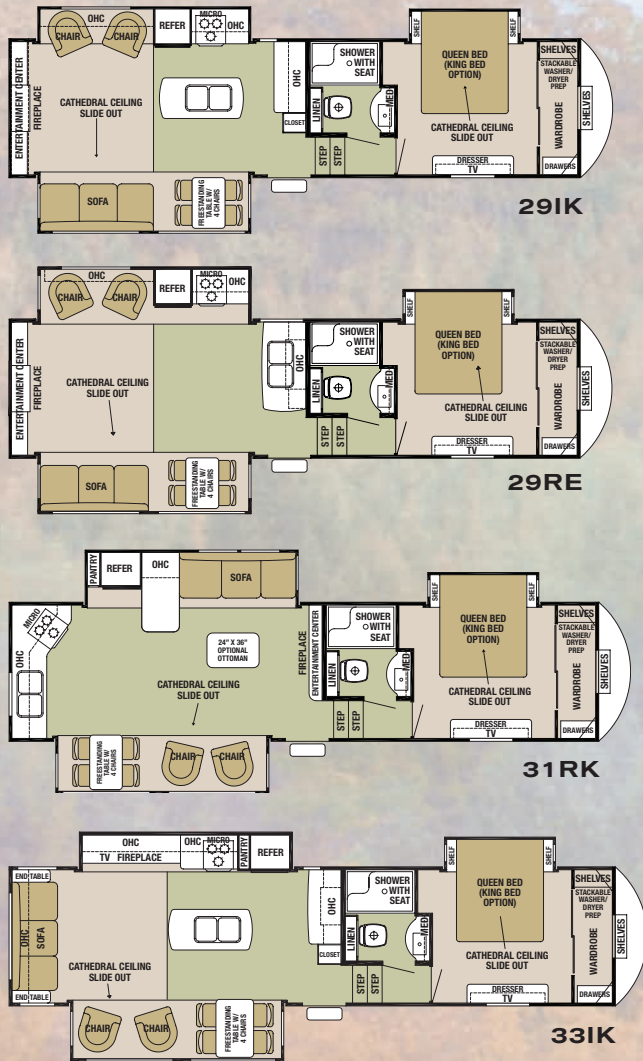
2" x 3" Aluminum floor studs



R-38 Radiant shield Thermo-foil wrap through ceilings, underbellies and under front cap.



Residential, glasswool insulation designed by nature



All Weights listed above are base weights. Weight capacities +/- 5%.
NOTE: All fifth wheel lengths include extended pin box and 4" bumper.
Model number of any particular unit does not necessarily reflect the overall length of the unit itself.

MODEL	29IK	29RE	31RK	33IK	37MBH	37BH	37RL
GVWR	13965 lb.	13985 lb.	14005 lb.	14067 lb.	16135 lb.	15940 lb.	16250 lb.
Hitch Weight	1965 lb.	1985 lb.	2005 lb.	2067 lb.	2135 lb.	1940 lb.	2250 lb.
UVW	10630 lb.	10705 lb.	10555 lb.	10880 lb.	12620 lb.	12650 lb.	12830 lb.
CCC	3335 lb.	3280 lb.	3450 lb.	3187 lb.	3515 lb.	3290 lb.	3420 lb.
Exterior Length	33' 11"	33' 11"	35' 4"	36' 11"	42' 2"	39' 11"	41' 6"
Exterior Height	12' 9"	12' 9"	12' 9"	12' 9"	12' 9"	12' 9"	12' 11"
Exterior Width	96"	96"	96"	96"	96"	96"	96"
Fresh Water	67 gal.	67 gal.	67 gal.	67 gal.	67 gal.	67 gal.	67 gal.
Gray Water	80 gal.	80 gal.	80 gal.	80 gal.	80 gal.	80 gal.	80 gal.
Black Water	40 gal.	40 gal.	40 gal.	40 gal.	40 gal.	40 gal.	40 gal.
Awning Size	16 ft.	16 ft.	16 ft.	16 ft.	21 ft.	16 ft.	16 ft.



Silverback's luxurious bath includes a large 48" shower with seat and glass doors, porcelain toilet, and a Fantastic Fan.



solid wood fascia gives "A" quality difference you can hear and feel!

Many of our competitors use false foam in their fascia. Silverback's



Removable "Soft Top" vinyl storm doors allow light and visibility without losing cooling or heating.

GVWR (Gross Vehicle Weight Rating) - is the maximum permissible weight of the unit when fully loaded. It includes all weights, inclusive of all fluids, cargo, optional equipment and accessories. For safety and product performance do NOT exceed the GVWR.

GAWR (Gross Axle Weight Rating) - is the maximum permissible weight, including cargo, fluids, optional equipment and accessories that can be safely supported by a combination of all axles.

UVW (Unloaded Vehicle Weight)* - is the typical weight of the unit as manufactured at the factory. It includes all weight at the unit's axle(s) and tongue or pin and LP Gas. The UVW does not include cargo, fresh potable water, additional optional equipment or dealer installed accessories.

CCC (Cargo Carrying Capacity)** - is the amount of weight available for fresh potable water, cargo, additional optional equipment and accessories. CCC is equal to GVWR minus UVW. Available CCC should accommodate fresh potable water (8.3 lbs. per gallon). Before filling the fresh water tank, empty the black and gray tanks to provide for more cargo capacity.

*Estimated Average based on standard build optional equipment.

**Estimated average based on standard build optional equipment. Each Forest River RV is weighed at the manufacturing facility prior to shipping. A label identifying the unloaded vehicle weight of the actual unit and the cargo carrying capacity is applied to every Forest River RV prior to leaving our facilities.

The load capacity of your unit is designated by weight, not by volume, so you cannot necessarily use all available space when loading your unit.



Silverback's front storage compartment is insulated with 1-1/4" thick baggage doors. The central docking station includes the water bypass, outside

shower, easy access dump valves, slide-room valves and water systems.



LG Solid surface countertop and dual bowl, stainless steel sinks



Another feature that we've taken from residential construction is our super quiet "HP"

(High performance) 15,000 BTU air conditioning system, which includes a larger compressor and cold air returns! This means 30% more air is being forced into the coach than a standard 15,000 air conditioner.



All Silverback fifth wheels are now prewired for an optional Furion wireless camera. This back-up camera system utilizes wireless

digital technology for a clearer rear view and enhanced safety.



A&E metal wrapped awning with LED night light strip.

FEATURES AND OPTIONS

CEDAR CREEK SILVERBACK EDITION PACKAGE (MANDATORY OPTIONS)

- 48" LED TV in living room (N/A 37BH, 31RK)
- Jensen 12 volt CD/DVD, AM/FM, Bluetooth, MP3/USB stereo system with video streaming capabilities, 4 ceiling mount speakers and two waterproof exterior speakers
- New Maple hardwood cabinet doors
- New ceiling cove molding
- New wallboard
- Upgraded solid wood slide room fascia in living room
- Rebond carpet pad
- Electric fireplace
- Updated Shaw carpet and Congoleum Diamondfloor™ flooring
- Medicine cabinet in bathroom
- La-Z-Boy® sofa and recliners with lifetime warranty on parts
- Dirt Devil central vacuum system
- New recessed stove top with glass cover and LG solid surface handle
- New full panel backsplash
- Upgraded kitchen faucet
- New stainless steel sinks
- New self-closing drawer guides
- 32" LED TV in bedroom
- New bedding and window treatments in bedroom
- New larger mirrored closet doors
- New quad entry step
- Hehr automotive frameless windows
- New friction hinge entry door
- Black A&E metal weather shield for awning
- New pearl front cap with new upgraded graphics package
- LED lighting under awning
- 50 Amp cord reel
- 3 Battery compartment

EXPLORER PACKAGE (MANDATORY OPTIONS)

- Dexter axles/brakes/suspension performance package
 - Dexter E-Z Flex® rubber equalization system with bronze bushings and six greased zerks per side
 - Dexter E-Z Lube™ hubs
 - Dexter Nev-R-Adjust® brakes
- 16" ST tires and aluminum rims
- 8 Cu. ft. gas/electric refrigerator with solid glazed wood door front
- 30" Over the range microwave with outside venting
- LG® Hi-MACS Classic solid surface countertops
- Black tank flush
- Bathroom Breeze Power Fan with wall switch in the bathroom

- Front hydraulic landing legs
- Cedar Creek switch control center
- Winegard HD roof satellite prep
- Prepped for Furion rear wireless camera

STANDARD FEATURES

- "Quite Zone" ducted 15,000 "HP" (High performance), air conditioner with circular motion ductwork and cold air returns. The larger compressor on this AC pushes 30% more air into the coach.
- Attic Vents
- Braced and wired for second air conditioner
- Enclosed and insulated underbelly with 12 volt heating pads on all holding tanks (R38)
- 5/8" Tongue and groove plywood floor
- Braced for optional "Level-Up" 6-point hydraulic level system
- LED tail lights and lower front lights
- Lighted entry step
- Locked docking station with water by-pass, slide room controls, outside shower, satellite and cable hook-ups, 12 volt battery disconnect, city and fresh water fills and easy to use tank handles
- 10 Gallon LP/110 volt/DSI water heater
- Cathedral slide rooms (Main and bedroom slides)
- Create-A-Breeze Fantastic Fan with rain sensor in kitchen
- Digital thermostat for heat and air
- LED ceiling lights with lifetime warranty
- Radius ceiling
- Outside kitchen with sink, faucet, enamel metal waterproof cabinetry, refrigerator, microwave and RVQ gas grill (37BH only)
- 48" Shower with seat and glass doors
- Porcelain toilet with top swirl flush
- Serta® residential mattress
- "True" Pearl Gelcoat Exterior - truly the best of the best in gelcoat exteriors. Stronger, thicker, and keeps its high gloss longer than our competitor's less expensive gel-coated exteriors
- Solid wood fascia - no wrapped foam - try the "Tap Test"

OPTIONAL "LEVEL-UP"™ 6-POINT HYDRAULIC STABILIZATION SYSTEM

RATED #1 CUSTOMER PREFERRED OPTION

Leveling and stabilizing a fifth wheel has never been easier. Patented "Level-Up" technology makes set ups faster, and a lot safer than the older systems. This system stabilizes the coach once the legs have been set. Powerful "Level-Up" even has the strength to level a unit with the tires off of the ground.

OPTIONS

- "Level-Up" 6-point hydraulic level system
- "Quiet Zone" ducted Penguin 13,500 BTU roof mount second air conditioner
- Create-a-Breeze fan with rain sensor and thermostat in the bedroom IPO vent
- Vinyl flooring throughout except bedroom and slides
- Wall hugger La-Z-Boy® theater seating
- Power wall hugger La-Z-Boy® theater seating
- Deluxe La-Z-Boy® ottoman with hidden storage
- Dinette table IPO free standing table and chairs
- La-Z-Boy® trifold Comfort Sleep sofa (37MBH and 37BH Only)
- Jack-knife sofa IPO bottom bunk (37MBH and 37BH Only)
- 12' Super Sofa with hide-a-bed and two sliding tables with mounts (37MBH only)
- Serta® Winding Road King bed
- Serta® Bellagio luxury Queen and King mattress with gel memory foam top
- 11 Cu. ft. stainless steel electric only refrigerator with inverter (N/A 29IK)
- 13 Cu. ft. side-by-side gas/electric refrigerator with raised wood fronts (N/A 29RE, 29IK)
- 19 Cu. ft. stainless steel electric only refrigerator with inverter and icemaker (N/A 29RE, 29IK)
- Washer/dryer prep
- Splendide combination washer/dryer
- Splendide stackable washer/dryer
- Kitchen slide awning topper (1)
- Dual pane windows
- 1-1/4" Bike rack hitch receiver
- Furion rear camera - mounted
- Solar prep
- 200W Solar panel





LUXURIOUS BEDROOM All spacious master bedrooms come standard with 32" LED TVs, roomy cathedral bedroom slide outs and Serta® queen beds with residential bedspreads and matching pillow shams. A king bed is available as an option.

I TRAVEL NOT TO GO ANYWHERE, BUT TO GO. I TRAVEL FOR TRAVEL'S SAKE. THE GREAT AFFAIR IS TO MOVE. - Robert Lewis Stevenson

Cedar Creek

SILVERBACK EDITION

The Smart Choice for the Experienced RV'er

FOREST RIVER INC./ CEDAR CREEK DIVISION

501 Hawpatch Road / Topeka, IN 46571

Ph: 260-593-2404 / Fax: 260-593-2447

Parts & Service Ph: 260-593-3017 / Fax: 260-593-2645

All information contained in this brochure is believed to be accurate at the time of publication. However, during the model year, it may be necessary to make revisions and Forest River, Inc., reserves the right to make all such changes without notice, including prices, colors, materials, equipment and specifications as well as the addition of new models and the discontinuance of models shown in this brochure. Therefore, please consult with your Forest River dealer and confirm the existence of any materials, design or specifications that are material to your purchase decision. ©2015 Cedar Creek. A division of Forest River, Inc., a Berkshire Hathaway Company. 11/15 Silverback

On The Web at: www.forestriverinc.com/silverback

FREE MEMBERSHIP
to Forest River Owners' Group

www.forestriverfrog.com



THE SILVERBACK EXPERIENCE

Cedar Creek is dedicated to enhancing the joy of the outdoors and your peace of mind, by building better quality recreational vehicles designed to withstand rugged road conditions and extreme temperatures. Experience Silverback - see where the road leads and enjoy what life has to offer!

YOUR SILVERBACK DEALER



PRE-DELIVERY INSPECTION FACILITY

20,000 square feet of quality assurance. The bare essentials for a premium product. This state-of-the-art facility gives immediate daily feedback to production for quality assurance in every unit built.

24/7 EMERGENCY ROADSIDE ASSISTANCE

For a worry-free ownership experience Forest River includes one year of Coach-Net RV Technical & Roadside Assistance with each RV purchase. Whether new to the RV lifestyle or an experienced RV enthusiast, Forest River owners have 24/7 access to technical, operational and emergency road service coverage throughout the US & Canada. Coach-Net's fast, dependable service is just a phone call away.

Coach-Net®

RV Technical & Roadside Assistance



Learn More

Scan this barcode using a QR Reader on your smart phone to learn more about Forest River.



A Berkshire Hathaway company.



Forest River, Inc. encourages our customers to purchase their Forest River products from a local dealership whenever possible for the following reasons:

- 1) Forest River, Inc. dealers are independently owned and operated businesses so priority service and scheduling is at their discretion and is often provided to customers that purchased their unit at that dealership.
- 2) Purchasing locally allows customers to establish meaningful relationships with a dealer, enhancing the RV experience through assistance with product questions, user tips or RV regulations for your state or country, and much more!
- 3) Canadian customers must meet requirements to bring an RV purchased out of the country to their home. These requirements may involve additional inspections and certifications, taxes and fees. Your local Canadian Dealer is a professional at meeting these requirements.
- 4) Scheduling timely warranty repairs and adjustments through a local dealership provides far greater flexibility and convenience to you, the customer!

It is the goal of Forest River, Inc. that all of our RV owners fully enjoy the RV experience and that customer satisfaction meets or exceeds their expectations!