

LAMINATED VENGEANCE

& SUPER SPORT FIFTH WHEELS



LAMINATED SUPER SPORT FIFTH WHEELS



312A



315A11



320A



COMING SOON

EXTERIOR

- 102" Wide Body Construction
- Fiberglass Front Cap w/LED Accent Lighting
- 21' Power Awning w/LED Lights
- Rear Loading Lights
- Sony Marine Grade Exterior Speakers
- Electric Front Landing Gear
- Enclosed and Heated Underbelly
- 100% Exterior LED Lights
- Solar Prep
- Exterior Cable Outlet with TV Bracket
- Central Docking Station
- Black Tank Flush
- Outside Shower with Hot and Cold Water
- Large Entry Assist Handle
- Rain Gutters with Extended Drip Spouts
- 8' Ramp Door
- 1" Garage Floor and Tuff Ply Cover
- Full Walk-on Radius Roof
- 6 gallon Gas/Electric DSI Water Heater
- Aluminum Wheels
- Battery Quick Disconnect
- Nitrogen Filled Tires
- Spare Tire with Carrier
- Safety Glass Windows

OPTIONS

- 1000 Watt Inverter with Transfer Panel
- 2nd A/C
- 8 Cubic Foot Gas/Electric Refrigerator w/ Refer Fronts
- 5.5 Onan Generator
- Fifth Wheel Electric Stabilizer Jacks (Rear)
- Happijac Bed Lift-Top Bed with Bottom Sofa Combo
- Upgraded Steel Framed Roll Over Garage Sofas
- Ultracold Heated Holding Tank Pads
- Alumifoil Insulation
- Roof Ladder
- Ramp Patio Steps with Handrail

VENGEANCE SS PLATINUM OPTIONS

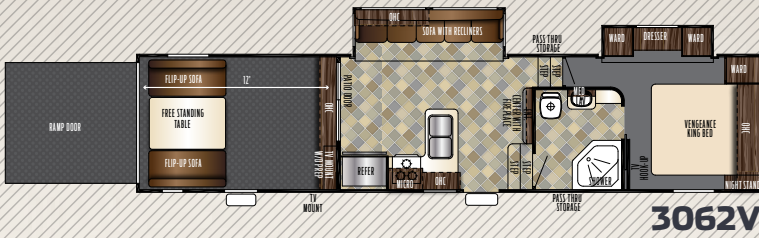
- Aluminum Constructed, Vacuum Bonded Side Walls, Slide Out End Walls and Bed Deck
- Wide Spread Chassis
- Upgrade 5,000 lb. Tie Downs Secured to Steel in Garage
- New Front Cap with Improved Turn Radius
- 7,000 lb. Axles with 8 Lug Wheels
- Back Up Camera Ready
- Dual 30lb. LP Tank Upgrade
- Equa Flex Suspension
- Bluetooth Stereo Upgrade
- LED Lighted Awning
- 100% LED Lighting with Accents
- Upgrade Ramp Patio System
- 30 Gallon Fuel Tank with Pump
- Generator Prep with Transfer Switch
- 100 Gallon Fresh Water Tank
- Screen Wall/Tent Wall
- Rigid Loading Light Upgrade

INTERIOR

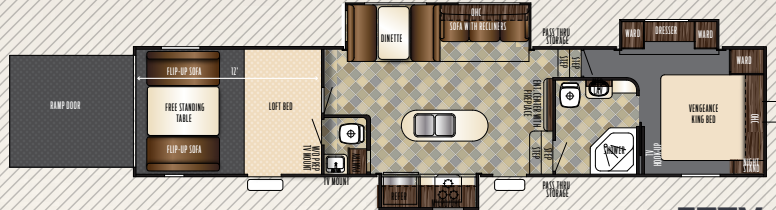
- 42" LED TV on Swing Arm
- Fireplace with Stone Front
- Interior LED Lighting Throughout
- 16 Cubic foot Residential Refrigerator
- 3 Burner Stove Top with Glass Cover
- Half Time Convection Microwave Oven
- Residential Wood Blinds in the Living Room
- Double Basin Stainless Steel Sink
- Pull Down Faucet
- Slide Out Cabinet Storage (N/A 315A11)
- LED Accent Lighting
- Interior Loft Bed (N/A 312A)
- Pantry Storage
- Kitchen Drawers with Ball Bearing Guides
- Neo-Angle Shower with Glass Enclosure
- Large Skylight Above Shower
- Large Bathroom Counter Tops
- Foot Flush Toilet
- 35,000 BTU Furnace Ducted in Floor
- Satellite Ready
- 2 Interior Speakers

- Residential Reclining Furniture (n/a 315A)
- 15,000 BTU Ducted A/C
- 2nd A/C Prep in the Bedroom
- 12V USB Charging Station
- Tuff Ply Cargo Floor
- Free Standing Folding Table
- Large Windows
- Diamond Plate Base Boards in Garage
- Blackout Snap On Window Covers in Garage
- Indoor/Outdoor Garage Carpet
- Garage TV Hook-Ups
- Bedroom TV Hook-Ups
- Night Shades in the Bedroom
- Backlit Lighted Switches
- Vapor Barrier Doors in Garage
- 50 Amp Service
- 90 Amp Converter
- Fire Extinguisher
- Smoke Detector
- LP Gas Detector
- Carbon Monoxide Detector

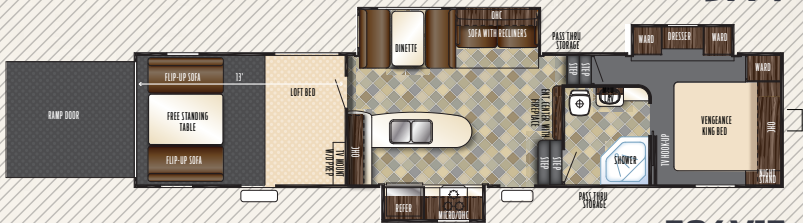
LAMINATED VENGEANCE FIFTH WHEELS



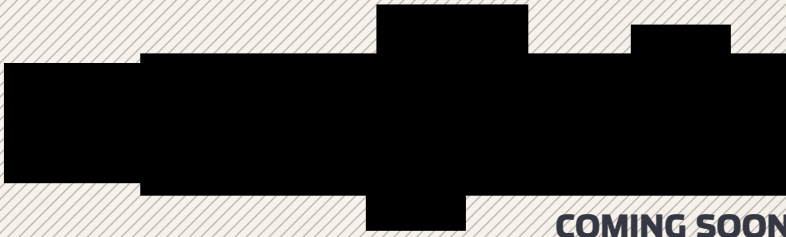
3062V



377V



394V13



COMING SOON

EXTERIOR

- 102" Wide Body Construction
- Fiberglass Front Cap w/LED Accent Lighting
- 21' Power Awning w/LED Lights
- Rear Loading Lights
- Sony Marine Grade Exterior Speakers
- Electric Front Landing Gear
- Enclosed and Heated Underbelly
- 100% Exterior LED lights
- Solar Prep
- Exterior Cable Outlet with TV Bracket
- Central Docking Station
- Black Tank Flush
- Outside Shower with Hot and Cold Water
- Large Entry Assist Handle
- Rain Gutters with Extended Drip Spouts
- 8' Ramp Door
- 1" Garage Floor and Tuff Ply Cover
- Full Walk-On Radius Roof
- 6 gallon Gas/Electric DSI Water Heater
- Aluminum Wheels
- Battery Quick Disconnect
- Nitrogen Filled Tires
- Spare Tire with Carrier

OPTIONS

- 1000 Watt Inverter with Transfer Panel
- 2nd A/C
- 8 Cubic Foot Gas/Electric Refrigerator w/Refer Fronts
- 5.5 Onan Generator
- Fifth Wheel Electric Stabilizer Jacks (Rear)
- Ramp Door Patio System
- Ramp Patio Steps with Handrail
- Happijac Bed Lift-Top Bed with Bottom Sofa Combo
- Upgraded Steel Framed Roll Over Garage Sofas
- Deluxe Solid Surface Sink Covers
- Ultracold Heated Holding Tank Pads
- Alumifoil Insulation
- Toylak Security Cable
- Flatscreen TV in Garage
- Roof Ladder

VENGEANCE PLATINUM OPTIONS

- Aluminum Constructed, Vacuum Bonded Side Walls,
- Slide Out End Walls and Bed Deck
- Wide Spread Chassis
- Upgrade 5,000 lb. Tie Downs Secured to Steel in Garage
- New Front Cap with Improved Turn Radius
- 7,000 lb. Axles with 8 Lug Wheels
- Back Up Camera Ready
- Dual 30lb. LP Tank Upgrade
- Equa Flex Suspension
- Solid Surface Counter Tops
- Upgraded Kitchen Faucet
- Fireplace with Stone Front
- Upscaling DVD Player with Sound Bar in Living Room
- Bluetooth Stereo Upgrade
- LED Lighted Awning
- 100% LED Lighting with Accents
- Generator Prep with Transfer Switch
- Screen Wall/Tent Wall
- Rigid Loading Light Upgrade

INTERIOR

- 42" LED TV on Swing Arm
- Interior LED Lighting Throughout
- 16 Cubic Foot Residential Refrigerator
- 3 Burner Stove Top with Glass Cover
- Half Time Convection Microwave Oven
- Booth Dinette with Storage Drawers (n/a 3062V)
- Residential Wood Blinds in the Living Room
- Double Basin Stainless Steel Sink
- Slide Out Cabinet Storage
- LED Accent Lighting
- Interior Loft Bed (n/a 3062V)
- Pantry Storage
- Washer/Dryer Prep in Garage
- Decorative Ceiling and Wall Lighting
- Slide Out Cabinet Storage
- Residential Style Pull Down Faucet
- Garage Stereo with Speakers
- Wardrobe Storage and Drawers in Bedroom
- Kitchen Drawers with Ball Bearing Guides
- Neo-Angle Shower with Glass Enclosure
- Large Sky Light Above Shower
- Large Bathroom Counter Tops
- Foot Flush Toilet

- Residential Reclining Furniture
- 15,000 BTU Ducted A/C
- 2nd A/C Prep in the Bedroom
- 12V USB Charging Station
- Blackout Snap-On Window Covers in Garage
- 35,000 BTU Furnace Ducted in Floor
- Satellite Ready
- Tuff Ply Cargo Floor
- Free Standing Folding Table
- Large Windows
- Diamond Plate Base Boards in Garage
- Indoor/Outdoor Garage Carpet
- Garage TV Hook-Ups
- Bedroom TV Hook-Ups
- Night Shades in the Bedroom
- Backlit Lighted Switches
- Vapor Barrier Doors in Garage
- 50 Amp Service
- 90 Amp Converter
- Fire Extinguisher
- Smoke Detector
- LP Gas Detector
- Carbon Monoxide Detector
- Safety Glass Windows

SUPER SPORT

	312A	315A11	320A	NEW FP
DRY HITCH WEIGHT	1972-lbs.	2068-lbs.	2398-lbs.	TBA
UNLOADED VEHICLE WEIGHT	10637-lbs.	10459-lbs.	11939-lbs.	TBA
AXLE WEIGHT	8606-lbs.	8332-lbs.	9482-lbs.	TBA
GVWR W/BRAKES	14636-lbs.	14458-lbs.	15938-lbs.	TBA
CARGO CARRYING CAPACITY	3999-lbs.	3999-lbs.	3999-lbs.	TBA
EXTERIOR LENGTH	38'-9"	38'-4"	39'-8"	TBA
EXTERIOR HEIGHT W/ AC	13'-4"	13'-4"	13'-4"	TBA
EXTERIOR WIDTH	102"	102"	102"	TBA
GREY CAPACITY	42-Gal.	42-Gal.	50-Gal.	TBA
BLACK CAPACITY	42-Gal.	42-Gal.	50-Gal.	TBA
FRESH CAPACITY	100-Gal.	100-Gal.	100-Gal.	TBA
AWNING SIZE	21'	21'	21'	TBA
CARGO AREA SIZE-OFF DS	144"	132"	146"	TBA
CARGO AREA SIZE-DS	144"	132"	146"	TBA

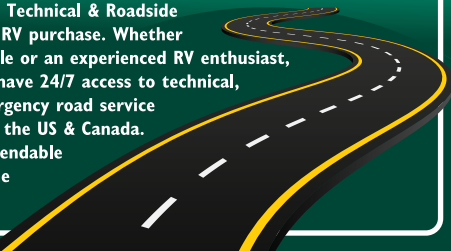
FIFTH WHEELS

	3062V	377V	394V13	NEW FP
DRY HITCH WEIGHT	2372-lbs.	2646-lbs.	2994-lbs.	TBA
UNLOADED VEHICLE WEIGHT	11877-lbs.	13275-lbs.	13195-lbs.	TBA
AXLE WEIGHT	9446-lbs.	10570-lbs.	10142-lbs.	TBA
GVWR W/BRAKES	15876-lbs.	17274-lbs.	17100-lbs.	TBA
CARGO CARRYING CAPACITY	3999-lbs.	3999-lbs.	3905-lbs.	TBA
EXTERIOR LENGTH	39'-4"	42'-4"	41'-8"	TBA
EXTERIOR HEIGHT W/ AC	13'-4"	13'-4"	13'-4"	TBA
EXTERIOR WIDTH	102"	102"	102"	TBA
GREY CAPACITY	72-Gal.	80-Gal.	80-Gal.	TBA
BLACK CAPACITY	42-Gal.	80-Gal.	50-Gal.	TBA
FRESH CAPACITY	100-gal	100-gal	100-gal	TBA
AWNING SIZE	21'	21'	21'	TBA
CARGO AREA SIZE-OFF DS	144"	144"	156"	TBA
CARGO AREA SIZE-DS	144"	144"	156"	TBA

24/7 EMERGENCY ROADSIDE ASSISTANCE

For a worry-free ownership experience Forest River includes one year of Coach-Net RV Technical & Roadside Assistance with each RV purchase. Whether new to the RV lifestyle or an experienced RV enthusiast, Forest River owners have 24/7 access to technical, operational and emergency road service coverage throughout the US & Canada. Coach-Net's fast, dependable service is just a phone call away.

Coach-Net®
RV Technical & Roadside Assistance



Forest River, Inc. encourages our customers to purchase their Forest River products from a local dealership whenever possible for the following reasons:

- 1) Forest River, Inc. dealers are independently owned and operated businesses so priority service and scheduling is at their discretion and is often provided to customers that purchased their unit at that dealership.
- 2) Purchasing locally allows customers to establish meaningful relationships with a dealer, enhancing the RV experience through assistance with product questions, user tips or RV regulations for your state or country, and much more!
- 3) Canadian customers must meet requirements to bring an RV purchased out of the country to their home. These requirements may involve additional inspections and certifications, taxes and fees. Your local Canadian Dealer is a professional at meeting these requirements.
- 4) Scheduling timely warranty repairs and adjustments through a local dealership provides far greater flexibility and convenience to you, the customer!

Specification Definitions

GVWR (Gross Vehicle Weight Rating) - is the maximum permissible weight of the unit when fully loaded. It includes all weights, inclusive of all fluids, cargo, optional equipment and accessories. For safety and product performance do NOT exceed the GVWR.

GAWR (Gross Axle Weight Rating) - is the maximum permissible weight, including cargo, fluids, optional equipment and accessories that can be safely supported by a combination of all axles.

UVW (Unloaded Vehicle Weight) - is the typical weight of the unit as manufactured at the factory. It includes all weight at the unit's axle(s) and tongue or pin and LP Gas. The UVW does not include cargo, fresh potable water, additional optional equipment or dealer installed accessories.

*Estimated average based on standard build optional equipment.

CCC (Cargo Carrying Capacity)** - is the amount of weight available for fresh potable water, cargo, additional optional equipment and accessories. CCC is equal to GVWR minus UVW. Available CCC should accommodate fresh potable water (8.3 lbs per gallon). Before filling the fresh water tank, empty the black and gray tanks to provide for more cargo capacity.

** Estimated average based on standard build optional equipment

Each Forest River RV is weighed at the manufacturing facility prior to shipping. A label identifying the unloaded vehicle weight of the actual unit and the cargo carrying capacity is applied to every Forest River RV prior to leaving our facilities.

The load capacity of your unit is designated by weight, not by volume, so you cannot necessarily use all available space when loading your unit.

It is the goal of Forest River, Inc. that all of our RV owners fully enjoy the RV experience and that customer satisfaction meets or exceeds their expectations!



PRE-DELIVERY INSPECTION FACILITY

20,000 square feet of quality assurance. The bare essentials for a premium product. This state-of-the-art facility gives immediate daily feedback to production for quality assurance in every unit built.



Learn More
Scan this barcode using a QR Reader on your smart phone to learn more about Forest River.



A Berkshire Hathaway company.

Forest River, Inc. 55470 C.R. 1 Elkhart, IN 46515
www.forestriverinc.com/Vengeance | www.forestriveraccessories.com

All information contained in this brochure is believed to be accurate at the time of publication. However, during the model year, it may be necessary to make revisions and Forest River, Inc., reserves the right to make all such changes without notice, including prices, colors, materials, equipment and specifications as well as the addition of new models and the discontinuance of models shown in this brochure. Therefore, please consult with your Forest River dealer and confirm the existence of any materials, design or specifications that are material to your purchase decision. Litho. U.S.A. FOR 1313 PPW: 2016.02.12

YOUR VENGEANCE DEALER