

# Blue Ridge

By Forest River

WIDE BODY FIFTH WHEELS

BLUE RIDGE FIFTH WHEELS



## Relax and Enjoy Life!

Experience leisure living at its finest with well-planned Blue Ridge wide body fifth wheels. Standard features include raised panel, solid Maple hardwood cabinet doors, satin nickel hardware, a mosaic tile kitchen backsplash, solid surface countertops with sink covers, stainless steel kitchen sinks with a pull-out faucet and LED lighting throughout. Dometic Quiet Cool air conditioning, a convection microwave oven and under stove storage add convenience. All Blue Ridge models are designed with flush floor slide outs for safe, easy walkways.



3780LF



**3780LF** This rear living room bunkhouse model is a perfect choice for vacation time with family and friends. A private lower bunk room doubles as a convenient office or sleeping area. The upper loft is kid-friendly and comes prepped for an optional combination TV/DVD player.





**3125RT**

**3125RT** This spacious slide out is shown with the residential free standing dinette and optional Pewter bonded leather theater seating. Kick back, enjoy this electric fireplace and watch the game in comfort on the 42" LED TV with an articulating swing arm. Pewter decor shown.



**3125RT** This storage friendly kitchen includes a solid surface countertop, convection microwave and three-burner stove with a 22 cu. in. oven.

**3125RT** Natural light enhances this roomy radius shower with a textured glass door.



**SIENNA**



**PEWTER**



**CHESTNUT**

**Blue Ridge**  
by Forest River



**3045RL**



**3045RL** This well lit bathroom features a 30" x 60" Mega shower with a skylight and an extended height vanity. The bedroom has a king bed, generous dresser drawers and a large closet, equipped with a stackable washer/dryer hook-up. Dual electrical supply allows both the washer and dryer to work simultaneously.



**3045RL** Serving friends is a treat in this Blue Ridge kitchen, equipped with these standard features: a 42" LED TV, electric fireplace, LED lighting, convection microwave, free-standing dinette and an island with storage. The living room area has broad picture windows. Facing flush floor slide outs create an open, airy atmosphere. The 90" Hide-a-bed sofa and optional reclining theater seats are shown in Pewter bonded leather.





# Blue Ridge

## Style and Convenience

Blue Ridge is big on storage and wide open living spaces.

### 2910SK

*This warm, inviting room with a view includes all the conveniences and well-planned storage of our larger Blue Ridge floor plans, in a slightly smaller package. Large picture windows and opposing, flush floor slide outs provide a roomy, well-lit living space to host family and friends. The free standing dinette table includes two chairs with flip-up storage and two folding chairs.*

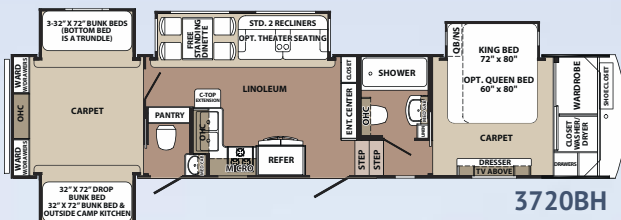
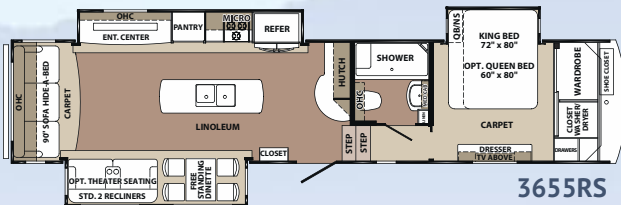
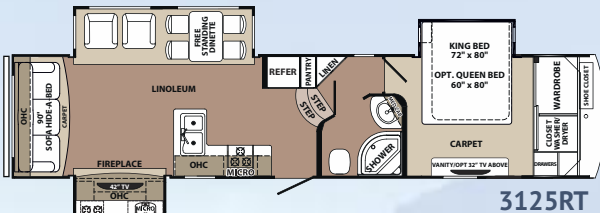
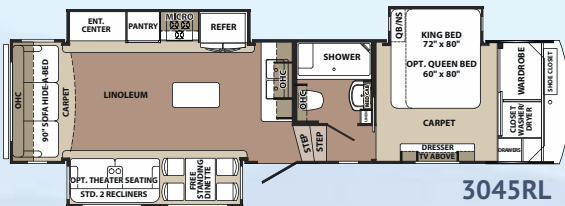
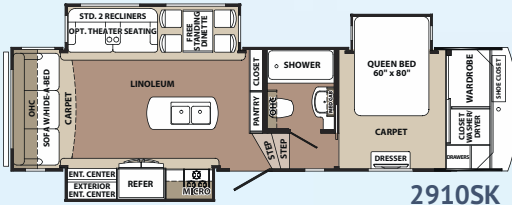
### 2910SK



# Blue Ridge

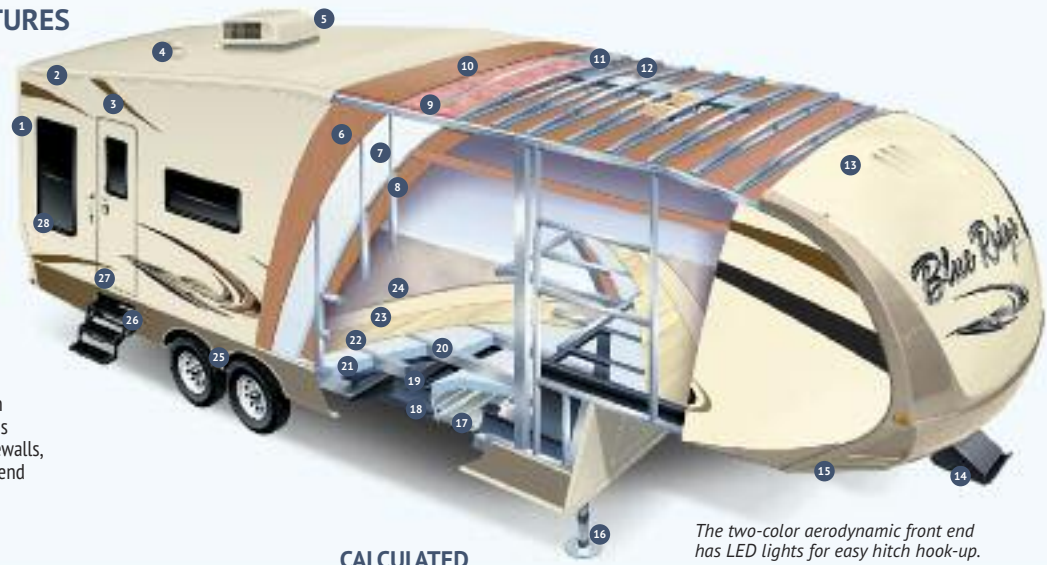
## Expand Your Horizons

With a selection of floorplans including double slideouts, spacious Blue Ridge Wide Body Fifth Wheels are designed to bring people together in comfort.



## CONSTRUCTION FEATURES

1. Cream Pigmented High Gloss Gel Coat Fiberglass
2. One-Piece SuperFlex II™ Thermoplastic Polyolefin (TPO)
3. Deluxe Graphics Package
4. Two Attic Vents (Front and rear)
5. Dometic Quiet Cool 15,000 BTU Air Conditioner
6. Wet Laid Luan Substrate
7. Block Foam Insulation
8. Welded Tubular Aluminum Studs (2" Wall)
9. 2 Layers of Fiberglass Batt Insulation
10. 3/8" Roof Decking (Screwed)
11. Aluminum Radiant Foil Insulation
12. 5" Tapered Aluminum Roof Trusses
13. Gel Coat Fiberglass Exterior (Sidewalls, entry doors, compartment doors, end walls of slide-outs and front cap)
14. Extended Hitch Pin
15. Chamfered Frame Design for Extended Turning Radius
16. Extra Wide Front Hydraulic Jacks
17. Heated and Enclosed Underbelly
18. 10" Powder Coated Steel I-Beam with Z-Frame (12" on 3655RS, 3815FL)
19. Black Polymax Moisture Barrier
20. Aluminum Floor Truss
21. Block Foam Insulation
22. 2" Laminated Wood Floor
23. Soft Foam Padding
24. Plush Carpet
25. MOR-Ryde® 3000 Suspension
26. Extended Radius Entry Step
27. 32" x 76" Entry Door with Light
28. Frameless Premium Windows



The two-color aerodynamic front end has LED lights for easy hitch hook-up.

## CALCULATED R-VALUES

- Sidewalls: Block foam (R9)
- Roof: 2 layers of R7 batt (Fiberglass)(R24) and radiant foil insulation (R38)
- Main Floor: R38 foam backed radiant foil insulation
- Sub Floor: 1/4" honey combed plastic with aluminum radiant foil insulation and forced air heat
- Front Cap: Fiberglass insulation and radiant foil insulation (R38)
- End Wall: Block foam (R9)

WIDE BODY	2910SK	3045RL	3125RT	3655RS	3720BH	3780LF	3815FL
Length (Center of Pin to Rear of Bumper)	33' - 7"	37' - 3"	38' - 1"	40' - 8"	41' - 1"	41' - 2"	41' - 6"
Shipping Weight	11230	11888	11904	12736	13957	13341	13365
UVW	11289	11947	11963	12795	14016	13400	13424
Hitch Weight	2270	2345	2136	2450	2303	2583	2655
GAWR	12000	12000	12000	13680	13680	13680	13680
GVWR	14270	14345	14136	16130	15983	16263	16335
Cargo Carrying Capacity (CCC)	2981	2398	2173	3335	1967	2863	2911
Exterior Height	13' 6"	13' 6"	13' 6"	13' 6"	13' 6"	13' 6"	13' 6"
Exterior Width	100"	100"	100"	100"	100"	100"	100"
Interior Height (Bedroom)	81"	81"	81"	81"	81"	81"	81"
Interior Height (Living area)	106 1/2"	106 1/2"	106 1/2"	106 1/2"	106 12"	106 1/2"	81"
Tire Size ST235/80R16E	■	■	■	■	■	■	■
Brake Size	12"	12"	12"	12"	12"	12"	12"
Fresh Water	64 gal.	64 gal.	64 gal.	64 gal.	64 gal.	64 gal.	64 gal.
Waste Water	110 gal.	120 gal.	120 gal.	110 gal.	160 gal.	120 gal.	120 gal.
Water Heater	10 gal.	10 gal.	10 gal.	10 gal.	10 gal.	10 gal.	10 gal.
Furnace	42000 BTU	42000 BTU	42000 BTU	42000 BTU	42000 BTU	42000 BTU	42000 BTU
Patio Awning	14'	16'	19'	19'	16'	18'	17'
Exterior Storage (Cu. ft.)	105	118	113	118	120	118	122

**GVWR (Gross Vehicle Weight Rating)** - is the maximum permissible weight of the unit when fully loaded. It includes all weights, inclusive of all fluids, cargo, optional equipment and accessories. For safety and product performance do NOT exceed the GVWR.

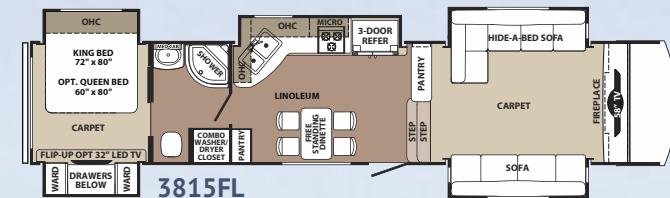
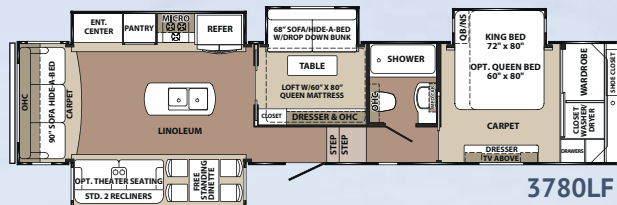
**GAWR (Gross Axle Weight Rating)** - is the maximum permissible weight, including cargo, fluids, optional equipment and accessories that can be safely supported by a combination of all axles.

**UVW (Unloaded Vehicle Weight)** - is the typical weight of the unit as manufactured at the factory. It includes all weight at the unit's axle(s) and tongue or pin and LP Gas. The UVW does not include cargo, fresh potable water, additional optional equipment or dealer installed accessories.

**CCC (Cargo Carrying Capacity)\*\*** - is the amount of weight available for fresh potable water, cargo, additional optional equipment and accessories. CCC is equal to GVWR minus UVW. Available CCC should accommodate fresh potable water (8.3 lbs. per gallon). Before filling the fresh water tank, empty the black and gray tanks to provide for more cargo capacity.

\*Estimated Average based on standard build optional equipment.  
\*\*Estimated average based on standard build optional equipment. Each Forest River RV is weighed at the manufacturing facility prior to shipping. A label identifying the unloaded vehicle weight of the actual unit and the cargo carrying capacity is applied to every Forest River RV prior to leaving our facilities.

The load capacity of your unit is designated by weight, not by volume, so you cannot necessarily use all available space when loading your unit.





ALTA remote controls slides, electric front and rear jacks, awnings and patio light.



Hook up utilities, flush tanks and change the water filter from the universal docking station. Includes hot and fresh water bypass valves.



Blue Ridge's spacious radius roof provides plenty of headroom for a ceiling fan. The overhead storage has stylish raised panel Maple hardwood doors.



MOR/ryde CRE/3000 compression rubber equalizer system for smoother towing.



Whole unit water filter removes unpleasant odors and tastes.



LCI One-Touch electric awning with adjustable arms.

## STANDARD FEATURES

### INTERIOR

- Solid Hardwood Maple Raised Panel Glazed Cabinet Doors and Drawers
- Crown Molding
- Solid Wood Drawer Boxes (Baltic Birch)
- Ball Bearing, Full Extension Drawer Guides
- Dehco Trekk Flooring (3-Year Cold Crack warranty)
- Residential Carpet
- Residential Cabinet Hardware and Accents
- Satin Nickel Plumbing Fixtures
- Decorative Slide Room Fascia Frame
- Solid Wood Exit Assist Handle
- Fireplace

### GALLEY

- LG Solid Surface Polished Counter Tops with Under Mount Sink
- Double Bowl Stainless Steel Kitchen Sink
- High Rise "J" Spout Kitchen Faucet
- Fantastic Fan with Rain Sensor
- Flush Floor Kitchen Slide-out

### LIGHTING

- LED Running and Tail Lights
- LED Lighting Throughout
- Decorative Ceiling Light above Dinette
- Hanging Lighting above Sink with Decorative Mount
- Ceiling Fan
- Exterior LED Docking Lights (2 Mounted into front cap)
- Exterior Security Lights (2)
- Exterior Amber Patio Light
- LED Awning Light Strip

### FURNITURE/WINDOW COVERINGS

- Swivel/Glider Recliners (2) (N/A 3815FL)
- Free Standing Dinette Table with Dual Leafs and (2) Chairs with Flip-up Storage (2 Folding chairs)
- Three Seat Rear Sofa with Hide-A-Bed
- Bonded Leather Sofa and Recliners
- Night Shades
- Designer Fabric Window Treatments (Where available)

### BATHROOM

- 12 Volt Power Roof Vent
- HPL Vanity Top with Oversized Residential Bowl
- Porcelain Toilet with Foot Flush

- Mega or Radius Shower
- Glass Shower Door
- Shower Skylight/Dome
- Adjustable Shower Head
- Medicine Cabinet with Mirrored Door
- Dedicated Heat and A/C Duct

### BEDROOM

- Premium, Innerspring Mattress
- King Bed (N/A 2910SK)
- Designer Headboard, Bedsread, Pillows and Sham
- Full Height Hanging Wardrobe
- French Mirrored Closet Doors
- Stackable/Combination Washer/Dryer Prep
- Shoe Caddy
- Chest of Drawers
- Underbed Storage
- (2) Beside Windows in Slide-Out
- (2) Reading Light with Individual Controls
- (2) Beside Power Outlets

### APPLIANCES

- 8 Cu. ft. Double Door Refrigerator (3125RT)
- Residential Refrigerator with 2000 Watt Inverter (2910SK, 3045RL, 3655RS, 3720BH, 3780 LF, 3815FL)
- 3-Burner, High Output Range with 22" Oven Range Cover
- 30" Convection Microwave
- 42K BTU LP Furnace
- Wire and Frame for Second A/C
- Dometic Quiet Cool 15K Ducted AC
- 10 Gal. Gas/electric DSI Water Heater
- "Shurflo" On-demand High Output Water Pump (3g/min @ 55 psi)
- LP Leak Detector
- Carbon Monoxide Detector

### ELECTRONICS

- 5-Function Remote Control with Key Fob
- Key Fob Operates Slides, Awning, Patio Light, Front Jacks and Rear Jacks
- 42" LED TV with HD Steel Swing Arm (58" - 3815FL)
- Furriion Theater System with Bluetooth, HDMI, DVD, AM/FM, Weather Band
- Digital TV Antenna with Signal Booster
- Cable TV Hook-ups (Bedroom)
- Cable TV Hook-up Exterior Garage Bulkhead
- Satellite Prep (Roof mounted)
- Exterior Flip-down Speakers

### EXTERIOR

- High Gloss Pigmented Gel Coat Fiberglass Exterior on All Walls
- Front Cap: Molded Two Color Painted High Gloss Gel Coat Fiberglass with LED Light Accents
- Front Cap Design: Engineered with Extended Turning Radius (Chamfered front)
- Laminated Front Bulkhead with High Gloss Gel Coat Fiberglass
- Slam Latch 1.5" Thick Baggage Doors with High Gloss Gel Coat Fiberglass (N/A LP door)
- Slide End Walls: Laminated with High Gloss Gel Coat Fiberglass
- 32" x 76" Entry and Screen Door with High Gloss Gel Coat Fiberglass
- 45° Angled Skirting
- Automotive Hehr Frameless Windows
- Hydraulic Slide Room Power
- Individual Slide Room Selector Switches
- Roof Ladder
- Electric Awning with LED Light Strip
- Entry Assist Handle (XL-Folding)
- 1.5" Aluminum Black Belt Rail with Caps (No exposed screws)
- Roto-cast Spun Seamless Water/Waste Tanks
- PEX Plumbing System
- Enclosed, Heated Underbelly and Heated Tanks (Forced air heat)
- Dual Roof Vents
- LP Quick Disconnect

### SLIDE ROOM SEAL/GASKET SYSTEM

- Aluminum "H" Frame Slide Room Perimeter
- Dual Neoprene Squeegee Seals
- Exterior and Interior "D" Seals
- Exterior "H" Seals

### UTILITY DOCKING COMPARTMENT

- 12 Volt Light
- Outside Shower (Hot and cold)
- Black Tank Flush System
- Water Heater Bypass Valve
- Full Coach Water Filtration System
- Winterizing Bypass System
- Protected/Insulated Pull Waste Valves
- Waste Hose Storage Tube
- Slam Latch Baggage Doors (1.5" Thick)

### CHASSIS/FOUNDATION

- I-beam "Z" Frame Powder Coated Chassis
- Chamfered Frame Technology
- 10" Beams: 2910SK, 3045RL, 3125RT
- 12" Beams: 3655RS, 3720BH, 3780LF, 3815FL
- Dual 6K Axles: 2910SK, 3045RL, 3125RT
- Dual 7K Axles: 3655RS, 3720BH, 3780LF, 3815FL
- Easy Lube Hubs
- MOR/ryde 3000 Suspension System
- (8) Lug Hubs
- Aluminum Rims 16"
- Radial Tires (E-rated)
- Spare Tire (Inside storage mount)
- Hydraulic Front Jacks
- Electric Rear Stabilizer Jacks
- Triple Steel Entry Steps (2910SK, 3045RL, 3125RT)
- Four Steel Entry Steps (3655RS, 3720BH, 3780LF, 3815FL)
- Flush Floor Slide Design with Steel Ramp and Glide Bar (Main Slide Room)
- Hydraulic Slide System with 2.5" Steel Rams
- Hydraulic Pump Station with Manual Overrides
- 18K Extended Hitch Pin

### CONSTRUCTION

- Wide Body Construction
- Sidewalls: 2" Welded Aluminum Framed Vacuum Bonded Laminated Walls
- Roof: 5" Dual Radiused Aluminum Roof Trusses on 16" Centers
- Roof: Alpha Super Flex II TPO Roof Material
- Front Wall: Welded Aluminum Frame
- Rear Wall: 2" Welded Aluminum Frame Vacuum Bonded Laminated Wall
- Main Floor: 2" Vacuum Bond Laminated with Welded Aluminum Trusses
- Bath/Bed Floor/Deck: Welded Aluminum Frame
- Slide Floor: 1" Wood Flooring
- Slide End Walls: 2" Welded Aluminum Frame, Laminated

### INSULATION

- Sidewalls: High Density Block Foam Insulation (R-9)
- Roof: Aluminum Radiant Foil Insulation and Fiberglass Insulation (R-38)
- Main Floor: High Density Block Foam Insulation and Aluminum Radiant Foil Insulation (R-38)

- Sub Floor: 1/4" Honey Combed Plastic with Aluminum Radiant Foil Insulation and Direct Forced Air Heat
- Front Cap: Fiberglass Insulation and Aluminum Radiant Foil Insulation (R-38)
- End Wall: High Density Block Foam Insulation (R-9)

### ELECTRICAL SYSTEMS

- Centralized Command Center and Monitor Panel
- 70 AMP Converter with Charge Wizard
- 50 AMP Service
- Marine Grade Detachable 50 AMP Power Cord
- 12 Volt Battery Disconnect
- Battery Prep Box (2)

### OPTIONS

#### INTERIOR

- 18 Cu. ft. Gas/Electric 4-Door Refrigerator (N/A 3125RT)
- 32" LED HD Bedroom TV (3720BH Bunkhouse)
- 39" LED TV (3780LF Bunkhouse only)
- Night Roller Shades
- Theater Seats
- Serta Deluxe Pillow Top Mattress
- Queen Bed with Night Stand (IPO King Bed)
- Hide-a-Bed sofa in Bunkroom
- Dyson DC 35 Vacuum Cleaner
- Oversized U-shaped Sofa Dinette (3720BH only)

#### EXTERIOR

- "Level Up" One-touch Automatic 6-Point Hydraulic Leveling System
- Dual Pane Frameless Windows
- Generator Prep
- 5.5 KW LP Generator (Includes prep)
- Slide-out Awning Toppers
- Dometic Quiet Cool 13.5 Ducted A/C in Bedroom (Standard on 3815FL)
- Heat Pump for 15,000 BTU A/C
- Fantastic Fan with Rain Sensor in Bedroom (N/A with Low profile 13.5 BTU AC) (N/A 3815FL)
- Rotoflex Pin Box
- Outside Entertainment Center with 32" LED TV
- Tank Heat Pads (12 Volt) (Secondary Heating System)
- Bike Rack

A stainless steel dual bowl sink with a pull-out faucet and solid surface countertops are standard.



An easy access, full size spare tire is located in the pass-thru storage area, not under the unit like the competition.



Quickly and easily flush the black tank.



Built with durable gel coated, vacuum bonded, laminated fiberglass sidewalls, end walls and roof on all slide outs.



Slam-Latch baggage doors are on all exterior compartment doors, except the LP tank door.



Sleek, frameless tinted windows help maintain interior temperature. (Dual pane option also available.)





**3815FL**

## Home Style Living

**3815FL** Everyone appreciates this open kitchen with a large French door residential size refrigerator, solid maple hardwood cabinet doors, solid surface countertops, deep stainless steel sink, three burner, high output range with a 22" oven, and overhead convection microwave.

This front theater living room features a 58" LED TV, CD/DVD/AM/FM stereo, surround sound and a heated electric fireplace. The ample seating arrangement has two extra large sofas – one with a hide-a-bed!



**3815FL** This extra large wardrobe features solid hardwood maple doors and is shown with optional flip up 32" LED TV.



### PRE-DELIVERY INSPECTION FACILITY

20,000 square feet of quality assurance. The bare essentials for a premium product. This state-of-the-art facility gives immediate daily feedback to production for quality assurance in every unit built.



**Forest River, Inc. encourages our customers to purchase their Forest River products from a local dealership whenever possible for the following reasons:**

- 1) Forest River, Inc. dealers are independently owned and operated businesses so priority service and scheduling is at their discretion and is often provided to customers that purchased their unit at that dealership.
- 2) Purchasing locally allows customers to establish meaningful relationships with a dealer, enhancing the RV experience through assistance with product questions, user tips or RV regulations for your state or country, and much more!
- 3) Canadian customers must meet requirements to bring an RV purchased out of the country to their home. These requirements may involve additional inspections and certifications, taxes and fees. Your local Canadian Dealer is a professional at meeting these requirements.
- 4) Scheduling timely warranty repairs and adjustments through a local dealership provides far greater flexibility and convenience to you, the customer!

It is the goal of Forest River, Inc. that all of our RV owners fully enjoy the RV experience and that customer satisfaction meets or exceeds their expectations!

### 24/7 EMERGENCY ROADSIDE ASSISTANCE

For a worry-free ownership experience Forest River includes one

**Coach-Net®**

year of Coach-Net RV Technical & Roadside Assistance with each RV purchase. Whether new to the RV lifestyle or an experienced RV enthusiast, Forest River owners have 24/7 access to technical, operational and emergency road service coverage throughout the US & Canada. Coach-Net's fast, dependable service is just a phone call away.

RV Technical & Roadside Assistance



#### Learn More

Scan this barcode using a QR Reader on your smart phone to learn more about Forest River.



A Berkshire Hathaway company.

**Blue Ridge**  
by Forest River

Blue Ridge  
58277 State Road 19 South ■ Elkhart, IN 46517  
(574) 296-7700 ■ [www.forestriverinc.com/blueridge](http://www.forestriverinc.com/blueridge)  
[www.forestriveraccessories.com](http://www.forestriveraccessories.com)  
[fb.me/blueridgeffthwheels](http://fb.me/blueridgeffthwheels) Find us on Facebook

All information contained in this brochure is believed to be accurate at the time of publication. However, during the model year, it may be necessary to make revisions and Forest River, Inc., reserves the right to make all such changes without notice, including prices, colors, materials, equipment and specifications as well as the addition of new models and the discontinuance of models shown in this brochure. Therefore, please consult with your Forest River dealer and confirm the existence of any materials, design or specifications that are material to your purchase decision. ©2016 Blue Ridge, a Division of Forest River, Inc., a Berkshire Hathaway company. All rights reserved 7/16

Your BLUE RIDGE Dealer

**FREE MEMBERSHIP**  
to Forest River Owners' Group

[www.forestriverfrog.com](http://www.forestriverfrog.com)

