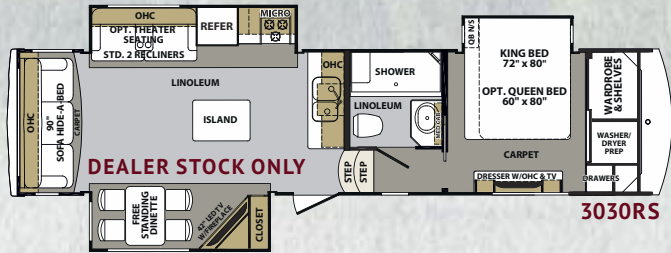
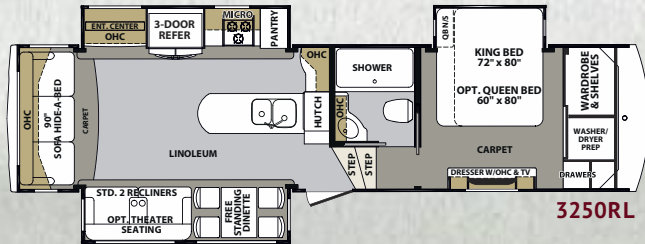


Cardinal

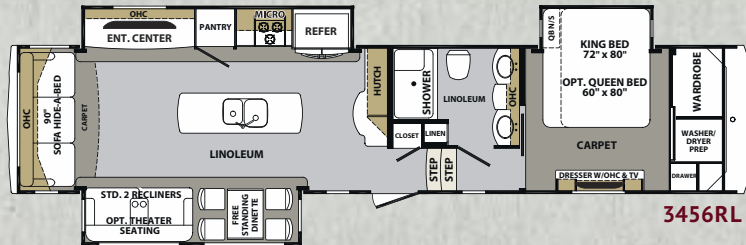
WIDE BODY FIFTH WHEELS
BY FOREST RIVER



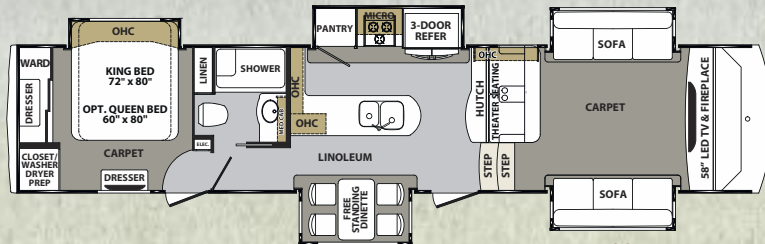
3030RS



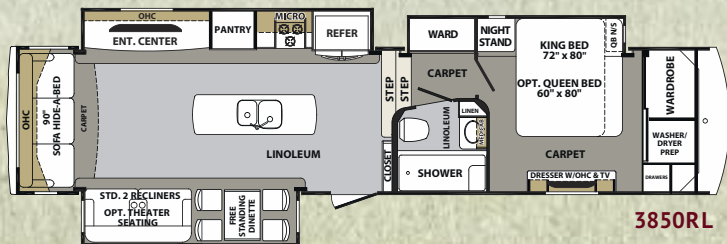
3250RL



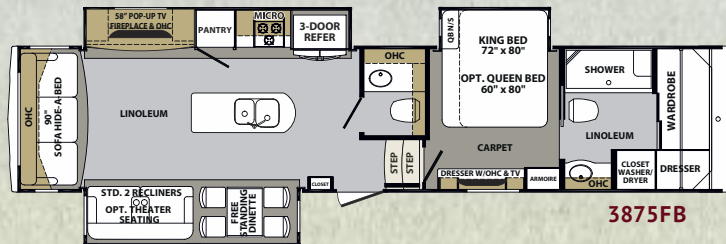
3456RL



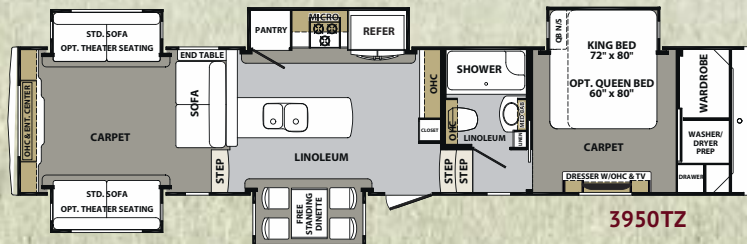
3825FL



3850RL



3875FB



3950TZ

WIDE BODY	3030RS	3250RL	3456RL	3825FL	3850RL	3875FB	3950TZ
Length (Center of Pin to Rear of Cap)	35' - 9"	34' - 11"	40' - 8"	41' - 7"	39' - 6"	40' - 6"	41' - 1"
Shipping Weight	12010	12142	13936	13978	13563	13975	14291
UVW	12069	12201	13995	14037	13622	14034	14350
Hitch Weight	2640	2252	2655	2452	2575	2490	2925
GAWR	12000	12000	13680	13680	13680	13680	13680
GVWR	14640	14252	16335	16132	16255	16170	16605
Cargo Carrying Capacity (CCC)	2571	2051	2340	2095	2633	2136	2255
Exterior Height	13' 6"	13' 6"	13' 6"	13' 6"	13' 6"	13' 6"	13' 6"
Exterior Width	100"	100"	100"	100"	100"	100"	100"
Interior Height (Bedroom)	81"	81"	81"	105"	81"	81"	81"
Interior Height (Living area)	105"	105"	105"	81"	105"	105"	88"
Tire Size	ST235/80R16E	ST235/80R16E	ST235/80R16E	ST235/80R16E	ST235/80R16E	ST235/80R16E	ST235/80R16E
Brake Size	12"	12"	12"	12"	12"	12"	12"
Fresh Water	64 gal.	64 gal.	64 gal.	64 gal.	64 gal.	64 gal.	64 gal.
Waste Water	120 gal.	120 gal.	120 gal.	120 gal.	120 gal.	140 gal.	120 gal.
Water Heater	12 gal.	12 gal.	12 gal.	12 gal.	12 gal.	12 gal.	12 gal.
Furnace	42000 BTU	42000 BTU	42000 BTU	42000 BTU	42000 BTU	42000 BTU	42000 BTU
Patio Awning	17'	14'	19'	6' - 6" & 14'	19'	18'	16'
Exterior Storage (Cu. ft.)	113	113	150	107	150	150	232

GVWR (Gross Vehicle Weight) - is the maximum permissible weight of the unit when fully loaded. It includes all weights, inclusive of all fluids, cargo, optional equipment and accessories. For safety and product performance do NOT exceed the GVWR.

GAWR (Gross Axle Weight Rating) - is the maximum permissible weight, including cargo, fluids, optional equipment and accessories that can be safely supported by a combination of all axles.

UVW (Unloaded Vehicle Weight) - is the typical weight of the unit as manufactured at the factory. It includes all weight at the unit's axle(s) and tongue or pin and LP Gas. The UVW does not include cargo, fresh potable water, additional optional equipment or dealer installed accessories.

CCC (Cargo Carrying Capacity)** - is the amount of weight available for fresh potable water, cargo, additional optional equipment and accessories. CCC is equal to GVWR minus UVW. Available CCC should accommodate fresh potable water (8.3 lbs. per gallon). Before filling the fresh water tank, empty the black and gray tanks to provide for more cargo capacity.

*Estimated Average based on standard build optional equipment.
**Estimated average based on standard build optional equipment.

Each Forest River RV is weighed at the manufacturing facility prior to shipping. A label identifying the unloaded vehicle weight of the actual unit and the cargo carrying capacity is applied to every Forest River RV prior to leaving our facilities. The load capacity of your unit is designated by weight, not by volume, so you cannot necessarily use all available space when loading your unit.

STANDARDS INTERIOR

- Kensington Maple or Monticello Maple Hardwood Raised Panel Glazed Cabinet Doors and Drawers
- Hardwood Maple Cabinet Frames (Stiles)
- Crown Molding Cabinet Accents
- Crown Molding Ceiling Trim
- Residential Hidden Hinge Adjustable Cabinet Hardware
- Solid Wood (Baltic Birch) Drawer Boxes
- Ball Bearing, Full Extension Drawer Guides
- Beaufort® Flooring (7-Year Cold Crack warranty)
- Residential Carpet
- Wainscoting
- Satin Nickel Plumbing Fixtures
- Solid Wood Slide-out Fascia Frame
- Decorative Solid Wood Frame Entry Door
- Solid Wood Exit Assist Handle
- Cathedral Ceilings Throughout

GALLEY

- LG Solid Surface Polished Counter Tops with Under Mount Sink (15 Year warranty)
- Dual Bowl "Giant" Stainless Steel Kitchen Sink
- High Rise Single Handle Pull-down Kitchen Faucet
- 8 Cu. Ft. Gas/Electric Refrigerator (3030RS*)
- Maxx Air Fan with Rain Sensor and Remote
- Flush Floor Galley Slides
- Coat Closet (Where applicable)
- Hardwood Drawers in Pantry

INTERIOR LED LIGHTING

- LED Lighting Throughout
- Indirect LED Lighting
- Decorative Ceiling Light Above Dinette
- Ceiling Fan
- Pendant Lights in Galley
- Dimmer Switch (Living area only)

FURNITURE/WINDOW COVERINGS

- Three Seat Leather Rear Sofa with Hide-A-Bed
- (2) Bonded Leather Swivel Recliners with Lifetime Frame Warranty
- Free Standing Dinette Table with Dual Leafs and Lift-up Storage
- (4) Residential Chairs (2) with Flip-up Storage (2) Folding
- Day/Night Roller Shades (Living area)
- Night Roller Shades (Bedroom)
- Designer Hard Valance Window Treatments (Where available)
- Designer Soffits (Where available)

BATHROOM

- Maxx Air Fan with Rain Sensor and Remote
- Solid Surface Polished Vanity Counter Top with Integrated Bowl (Residential Height) (Double bowl sinks on 3456RL)
- Porcelain Toilet with Foot Flush

* DEALER STOCK ONLY

- Radius Molded Fiberglass One-piece Shower with Seat (3850RL)
- "Mega" Fiberglass Molded Shower
- Shower Skylight/Dome
- Glass Shower Door
- Adjustable Shower Head
- Medicine Cabinet with Mirrored Door
- Dedicated Heat and A/C Duct

BEDROOM

- King Bed, Premium, Innerspring Mattress
- Solid Wood Head Board
- Designer Bedspread, Pillows and Sham
- Full Height Hanging Wardrobe
- Stackable/Combo Washer/Dryer Prep
- Washer/Dryer Dual Electrical Outlets (Operates W/D at same time)
- Shoe Caddy
- Cubby Storage
- Chest of Drawers
- Cedar Lined Closet and Drawers
- Under Bed Storage
- Solid Hardwood Slide-out Fascia Frame
- (2) Reading Lights with Individual Controls
- (2) Bed Side Power Outlets

APPLIANCES

- Dometic 8 cu. ft. Double Door Refrigerator (3030RS*)
- Stainless Steel Residential Refrigerator with 2000W Inverter (3250RL, 3455RL, 3825FL, 3850RL, 3875FB)
- 3-Burner, High Output Range with 22" Oven and Flush Mount Solid Surface Range Cover
- Range Cover Storage Compartment
- 30" Convection Microwave
- Dyson DC35 Cordless Vacuum
- 42K BTU LP Furnace
- Wired and Framed for Second and Third A/C
- 15K Ducted Dometic Quiet Cool A/C System
- Fireplace
- 12 Gal. Gas/Electric DSI Water Heater
- "Shurflo" On-demand High Output Water Pump (3 g/min at 55 psi)
- Dual 30 lb. Propane Bottles with Auto Switch Over
- LP Leak Detector
- Carbon Monoxide Detector

- 42" LED TV with Heavy Duty Swing Arm (Main living area: 3030RS, 3250RL)
- 58" LED TV (Main living area 3456RL, 3825FL, 3850RL, 3875FB)
- 32" LED HDTV (Bedroom)
- Furrion Theater System with Bluetooth, HDMI, DVD, AM/FM, Weather Band
- Digital TV Antenna with Signal Booster
- Cable TV Hook-ups (Main living, bedroom)
- Cable TV Hook-up (Exterior garage bulkhead)
- Satellite Prep (Roof mount)
- Exterior Flip-down Speakers in Pass-thru Storage

ELECTRONICS

- 42" LED TV with Heavy Duty Swing Arm (Main living area: 3030RS, 3250RL)
- 58" LED TV (Main living area 3456RL, 3825FL, 3850RL, 3875FB)
- 32" LED HDTV (Bedroom)
- Furrion Theater System with Bluetooth, HDMI, DVD, AM/FM, Weather Band
- Digital TV Antenna with Signal Booster
- Cable TV Hook-ups (Main living, bedroom)
- Cable TV Hook-up (Exterior garage bulkhead)
- Satellite Prep (Roof mount)
- Exterior Flip-down Speakers in Pass-thru Storage

EXTERIOR

- High-gloss Colored Gel Coat Exterior (Premium quality and thickness)
- Front Cap: Molded High-gloss Gel Coat Fiberglass with Extended Turning Radius (Chamfered Front)
- Rear Cap: Molded High-gloss Gel Coat Fiberglass
- Laminated Front Bulkhead with High Gloss Gel Coat Fiberglass
- Back-up Monitor Camera Prep
- 32" X 76" Entry and Screen Door with High Gloss Gel Coat Fiberglass
- 45° Angled Skirting
- Slam Latch 1.5" Thick Insulated Doors with High Gloss Gel Coat Fiberglass
- Slide End Walls: Laminated with High Gloss Gel Coat Fiberglass
- Automotive Hehr Frameless Windows
- Hydraulic Slide Room Power
- Individual Slide Room Selector Switches
- Roof Ladder
- Dual Aluminum Wrapped Electric Power Awnings with LED Light Strip
- Entry Assist Handle (XL - folding)
- 1.5" Aluminum Belt Rail with Caps (No exposed screws)
- Roto-cast Spun Seamless Water/Waste Tanks
- Enclosed and Heated Underbelly (Forced air heat)
- Thermostatically Controlled Tank Heat Pads (12 Volt Electric) (Dual heating sources)
- Dual Roof Vents
- LED Tail Lights And Rear Running Lights
- LP Quick Disconnect
- Aluminum "H" Frame Slide Room Perimeter
- Dual Neoprene Squeegee Seals
- Exterior and Interior "D" Seals
- Exterior "H" Seal

SLIDE ROOM SEAL/GASKET SYSTEM

- Aluminum "H" Frame Slide Room Perimeter
- Dual Neoprene Squeegee Seals
- Exterior and Interior "D" Seals
- Exterior "H" Seal

EXTERIOR LIGHTING

- LED Docking Lights (4 - mounted into front cap)
- Rear Cap Lighting: White Reverse and Red Running/Brake Lights
- Security Lights (2)
- Amber Patio Light
- Entry Door Auto Threshold Light
- LED Awning Lights

UTILITY DOCKING COMPARTMENT

- Light (12 Volt)
- Outside Shower (Hot and cold)
- Black Tank Flush System
- Fresh Water Heater Bypass Valve
- Full Coach Water Filtration System
- Winterizing Bypass System
- Protected/Insulated Pull Waste Valves
- Waste Hose Storage Tube

CHASSIS/FOUNDATION

- I-beam "Z" Frame Powder Coated Chassis
- Chamfered Frame Technology
- 12" I-beam Frames (10" I-beam frame 3030RS* 3250RL)

- Dual Axles (7K with 12" beams) or (6K with 10" beams)
- Dexter E-Z Lube Bearing Lubrication System and Nev-R-Adjust Brakes
- MOR/ryde 3000 Suspension System
- MOR/ryde 18K Extended Pin Box
- (8) Lug Hubs
- Aluminum Rims 16"
- Goodyear® Premium E-rated Tires
- Spare Tire (Inside storage mounted)
- Hydraulic Front Jacks
- 8" Radius Front Jack Pads
- Electric Rear Stabilizing Jacks
- MOR/ryde Step Above Quad Aluminum Entry Steps
- Pinless Front Jack Legs
- Flush Floor Slide Design with Steel Ramp and Glide Bar (Main slide rooms)
- Hydraulic Slide System with 2" Steel Rams
- Hydraulic Pump Station with Manual Override

CONSTRUCTION

- Wide Body Construction
- Sidewalls: 2" Welded Aluminum Framed Vacuum Bonded Laminated Walls
- Roof: 5" Double Radiused Aluminum Trusses 16" on Centers
- Roof: Alpha Super Flex II TPO Roof Material
- Front Wall: Welded Aluminum Frame
- Rear Wall: Welded Aluminum Frame
- Floor: 3" Vacuum Bond Laminated with Welded Aluminum Trusses
- Bath/Bed Deck: Welded Aluminum Frame
- Slide End Walls: 2" Welded Aluminum Frame, Laminated
- Slide Roof: 2" Welded Aluminum Frame, Laminated
- Slide Floor: 1" Wood Flooring
- No Expansion Gaps

INSULATION

- Sidewalls: High Density Block Foam Insulation (R-9)
- Roof: Fiberglass Batten Insulation and Radiant Foil Insulation (R-38)
- Main Floor: High Density Block Foam Insulation and Radiant Foil Insulation (R-38)
- Sub floor: Honey Combed Polyurethane with Aluminum Radiant Foil Insulation and Direct Forced Air Heat
- Front Cap: Fiberglass Insulation and Radiant Foil Insulation (R-38)
- Rear Cap: Fiberglass Insulation and Radiant Foil Insulation (R-38)

ELECTRICAL SYSTEMS

- "My RV One" Control Center System/Monitor Panel
- 70 AMP Converter (Progressive Dynamics)
- 50 AMP Service
- Marine Grade Detachable 50 AMP Power Cord
- 12 Volt Battery Disconnect
- Battery Prep Box (2)
- Energy Management System (Third AC prep)
- Solar Prep

OPTIONS INTERIOR

- Serta Bellagio Deluxe King Sized Pillow Top Mattress
- Queen Bed (IPO King)
- Extra Dinette Chair
- Theater Seats
- Electric Theater Seats (N/A 3825FL)
- Stainless Steel Appliance Package (Includes convection microwave)
- 18 Cu. Ft. 4-Door Gas/Electric Refrigerator (N/A 3030RS)
- Dishwasher (N/A 3030RS)
- Residential Refrigerator with 2,000W Inverter (3030RS)
- 32" Galley TV (3825FL)
- Stackable Washer/Dryer
- Fantastic Fan with Rain Sensor - Bedroom (N/A with second AC)

EXTERIOR

- Full-body Paint Package
- 3, 4 or 5) Slide-out Awnings
- Low Profile 13,500 BTU Quiet Cool Ducted AC in Bedroom (Standard 3825FL)
- Third Low Profile 13,500 BTU Quiet Cool Ducted AC in Living Area
- Heat Pump for 15,000 BTU AC
- Dual Pane Frameless Windows with Safety Glass
- Generator Prep
- 5.5 LP Generator (Includes prep)
- "Level Up" 6-Point One Touch Automatic Hydraulic Leveling System
- Outside Ice Maker
- Bike Hitch
- Exterior Entertainment Center with 32" LED TV
- Premium G-rated Tires
- Dexter® Axle 7,000 lb. Hydraulic Disc Brakes
- 200 Watt Roof Mount Solar Panel
- Back-up Monitor Camera

Cardinal
58277 State Road 19 South • Elkhart, IN 46517
(574) 296-7700
www.forestriverinc.com/cardinal
www.forestriveraccessories.com
fb.me/cardinalfifthwheels



All information contained in this brochure is believed to be accurate at the time of publication. However, during the model year, it may be necessary to make revisions and Forest River, Inc., reserves the right to make all such changes without notice, including prices, colors, materials, equipment and specifications as well as the addition of new models and the discontinuance of models shown in this brochure. Therefore, please consult with your Forest River dealer and confirm the existence of any materials, design or specifications that are material to your purchase decision.
©2016 Blue Ridge, a Division of Forest River, Inc., a Berkshire Hathaway company. All rights reserved 9/16

