

Quailridge

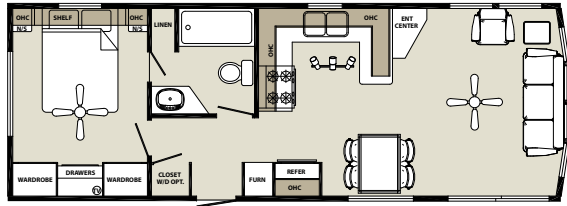


FLOOR PLAN GUIDE

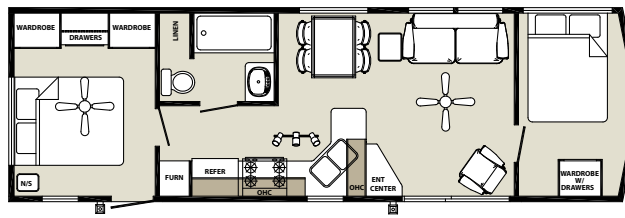


NON LOFT FLOOR PLANS

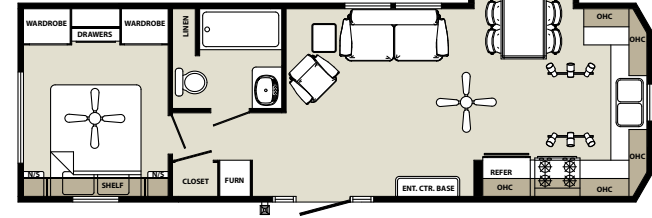
38FLA



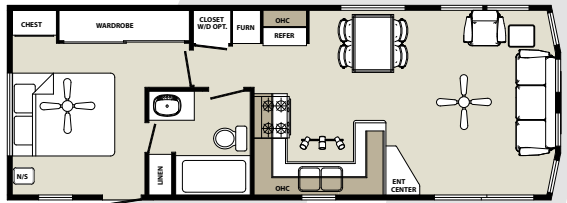
392B



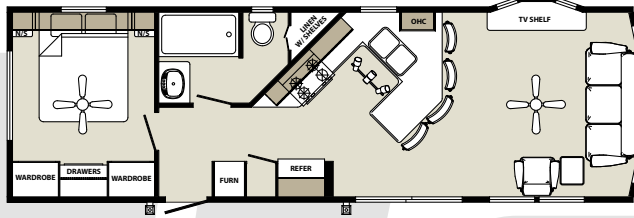
39FKB



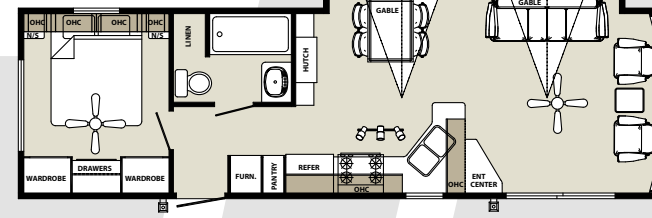
38FL



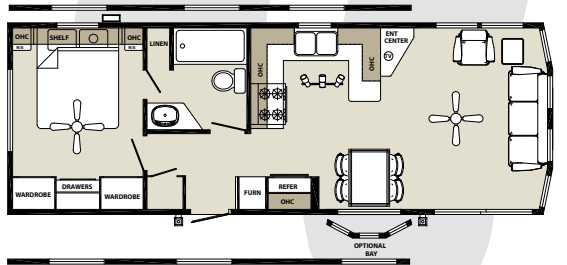
39AKFL



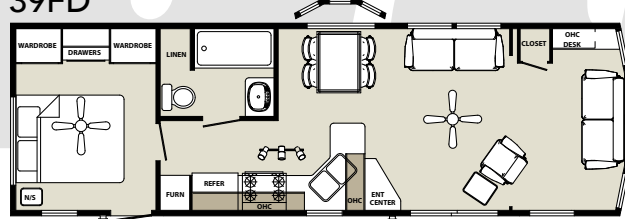
39FLSB



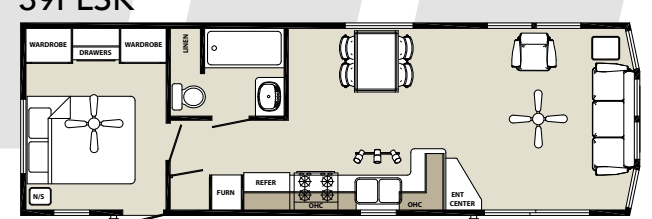
38FLAD



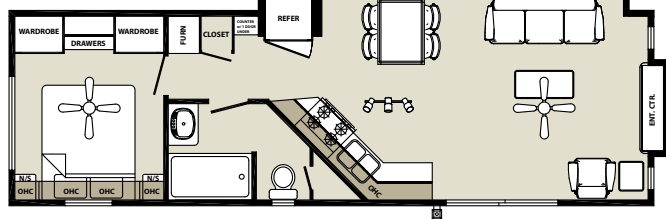
39FD



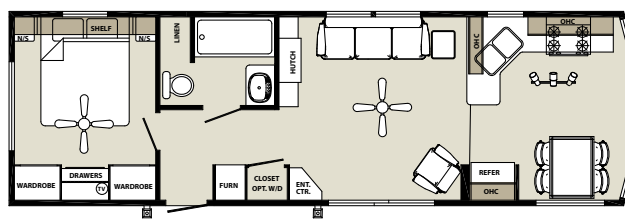
39FLSK



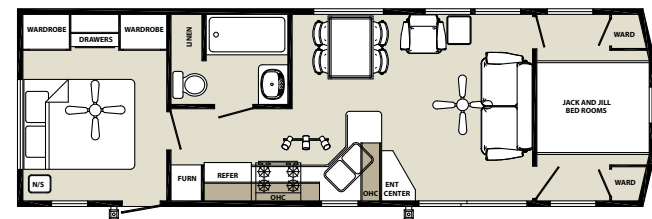
39FEC



39FK

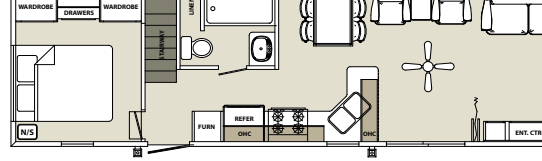
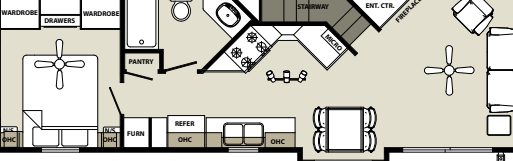
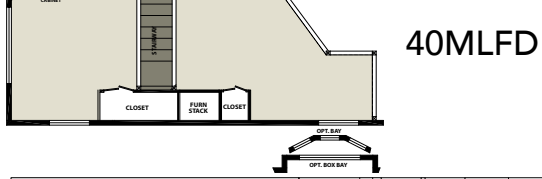
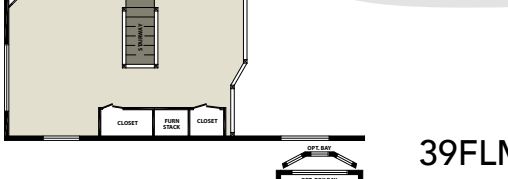
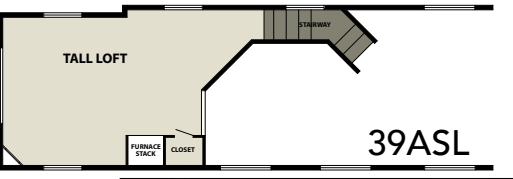
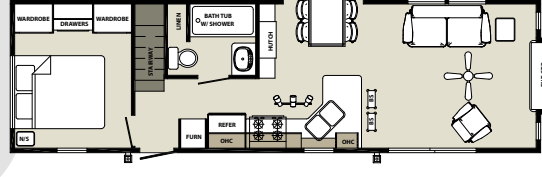
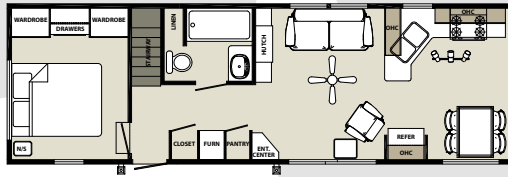
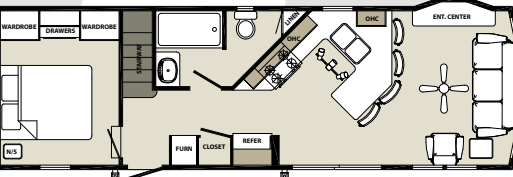
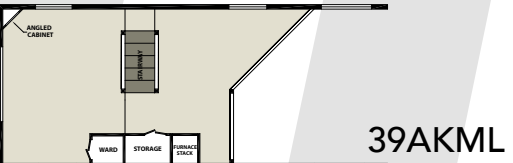
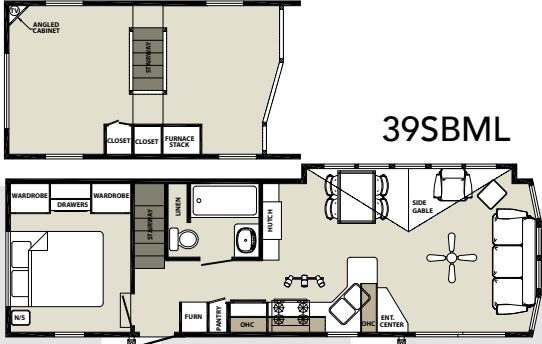
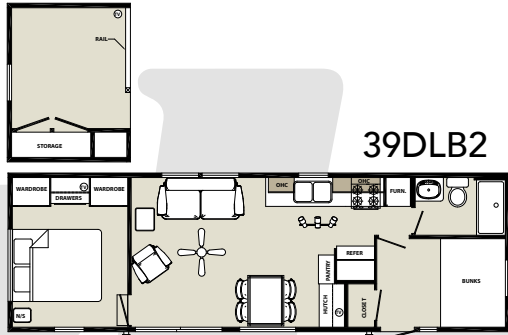
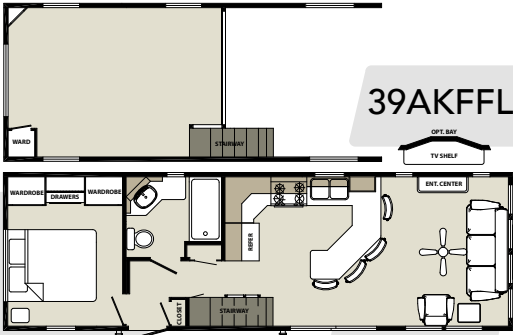
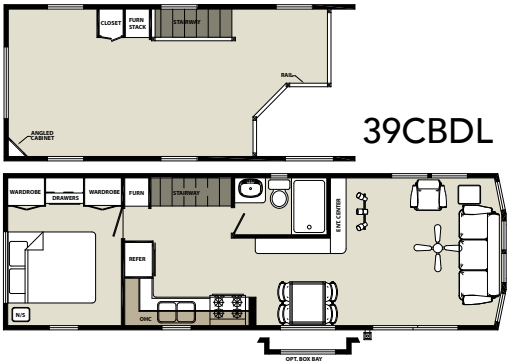
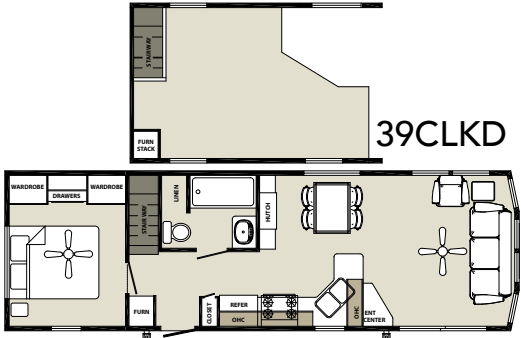
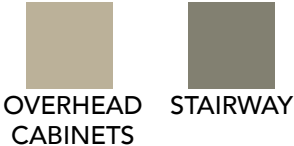


39JJ



LOFT FLOOR PLANS

LEGEND



QUAILRIDGE STANDARDS AND OPTIONS

EXTERIOR FEATURES

- Vinyl Siding with Lifetime Warranty
- Asphalt Architectural Upgrade Roofing Shingles (30 Year Warranty)
- Residential Shutters – Windows and Entry Doors*
- Residential Thermopane Single Hung Windows w/Grids
- Rear Door with Deadbolt Lock and Screen
- Solid Vinyl Patio Door
- R-11 Fiberglass Insulation with Vapor Barriers
- 8" I-Beam Steel Mains – Basement Frame
- Detachable Hitch
- Metal Underbelly
- 2" x 6" Traverse Floor Joist 16" On Center
- 2" x 4" Sidewall Studs 16" On Center
- Central Floor Heat Duct
- 5/8" Tongue and Groove Plywood Floor Decking
- Scissor Rafters 16" On Center.
- Roof Decking Overlaid with Felt Paper
- 110V Recept at City Water Fill

LIVING AREA

- Hide-A-Bed Sofa and La-Z-Boy®

- Recliner
- Solid Wood End Table with Lamp
- Entertainment Center
- Ceiling Fan with Light Kit
- Vertical Blind on Patio Door
- Residential Crown Molding
- Coordinated Chair Rail
- Hardwood Valances in Living Room & Dining Room
- Faux Wood Mini Blinds
- Coordinated Stained 6-Panel Interior Doors

KITCHEN/DINING AREA

- 18' cu. ft. 2-Door Frost Free Refrigerator
- 30" Gas Range
- Custom Kitchen Cabinets Featuring Raised Panel Doors
- Single Lever Faucet with Pull Down Sprayer
- Pull-out Trash Can *
- Pull-Out Wire Pantry *
- Composite Sink
- No Wax Vinyl Floor
- Rectangle Dinette Table with Leaf and 4 Fabric Color
- Coordinated Storage Chairs
- Self-Edged Countertops with Wood Beveled Edge

- Decorative Backsplash
- Space Saver Microwave
- Dining Room Hutch *
- Adjustable Shelving *

BATH AREA

- 1-Piece Fiberglass Tub/Shower with Shower Curtain
- Residential Style Ceramic Commode
- Power Exhaust Fan with Light
- Custom Hardwood Medicine Cabinet
- Linen Cabinet *
- Vanity Top with Sink and Faucet
- GFI Protected Receptacle

BEDROOM AREA

- 60" x 75" Serta® Queen Mattress
 - His and Her Lighted Wardrobes
 - Chest-O-Drawers
 - Night Stand with Lamp
 - Beadsread
 - TV Jack
- ## ADDITIONAL FEATURES
- 56,000 BTU Upright Furnace
 - 20 Gallon Electric Water Heater
 - Frost Proof Exterior Faucet
 - Exterior GFI Receptacle
 - Porch Light

- Smoke Detector
- LP Detector
- Fire Extinguisher
- Touch Control Wall Switches
- All Drawers on Full Extension Roller Guides
- Hurricane Tie Down Straps
- Seaspray Gypsum Ceiling Board
- RVIA Seal

OPTIONAL FEATURES

- Front Trap Windows
- Dining Room Bay *
- Stainless Steel Appliances
- Electric Fireplace
- Home Theater System
- Wood Plank Linoleum Upgrade
- Premium Carpet Upgrade
- Gas/Electric Water Heaters
- 15,000 BTU Floor Ducted A.C.
- 42,000 BTU RV Furnace
- Washer/Dryer Prep *
- Electric Fireplace Insert
- Flip-up Bed with Under Bed Storage
- Bench Dinette Seating with Storage *
- Pit Group Living Room Furniture *
- Neo-Angle Shower *
- Loft Entertainment Center *
- Loft A/C *

* Denotes where available

Quailridge

Forest River, Inc. Park Model Division
28936 Phillips St.
Elkhart, IN 46514
Phone: (574) 264-7613
Fax: (574) 264-7364
www.forestriverinc.com
www.forestriveraccessories.com



Learn More
Scan this barcode using a QR Reader on your smart phone to learn more about Forest River.



A Berkshire Hathaway company.