



Salem Villa

Welcome to the Original Social Networking Site

Salem Villa



Salem 100%

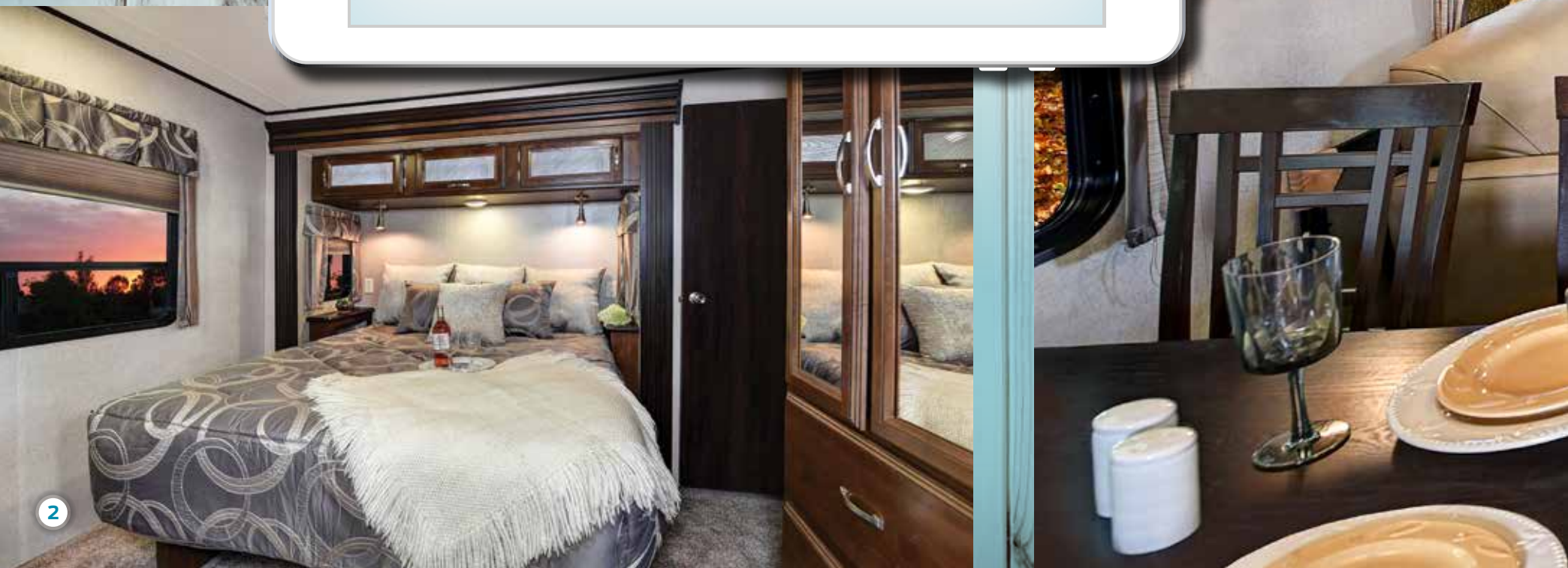
39FDEN

Totally Versatile Couples' Coach

SHOWN IN STERLING

The floor plan diagram illustrates the layout of the 39FDEN coach. At the front (left), there is a queen bed with a dresser and storage. The middle section contains a wardrobe, linen closet, shower, residential refrigerator, and a 27-inch awning. The rear (right) section features a dinette, sofa, chair, and another storage area. A central living area includes a linoleum floor, ceiling fan, and patio door. The front of the coach has a table, sofa, and another table.

Virtually no "wasted space." When company visits, family or friends, you have a unit that not only offers tremendous sitting and entertaining room, but also converts to un-matched sleeping capability in a non-bunk unit. Why have the wasted space of a bunk room, when it is not being utilized frequently? This coach offers it all, and when you are unwinding, you have tremendous room and comfort to just stretch out and relax!









Salem 100%

394FKDS

Luxurious and Practical

SHOWN IN AMARETTO

STORAGE
DRESSER
KING BED
CEILING FAN
WARDROBE
WASHER
DRIER
DPT.
LINEN
SHOWER
PATIO DOOR
ENTRY
21' AWNING
LIVING AREA
CHAIR
SOFA
FREE STAND
DINETTE
PATIO DOOR
ENTRY
PATIO DOOR
HOUSE TYPE REFER
MICRO

Stunning Couple's Retreat. This Villa Estate is a perfect mix of practicality, and comfort. Enjoy a seemingly endless amount of countertop space for meal prepping, kitchen appliances, and storage. All while being able to completely relax in our completely open floorplan. The storage, living and sleeping quarters, and amenities are designed to offer a completely inviting and open Villa that you will enjoy for years.





Salem 100%

4092BFL

Our Most Requested Villa.

SHOWN IN AMARETTO

Best of Both Worlds. Whether you are, or are not looking for bunks, there is no question why this trailer has been our #1 seller by a long shot. First, for families and guests, the bunk room is massive and entertaining. Completely "kid and adult approved". However, for those that do not have guests, or may not be looking for additional sleeping, they are always looking for that additional "storage space", and this unit provides an immense amount, without wasting valuable living space!







Classic

Salem Villa

Interior Features

Classic

- A. Vaulted Ceilings in Living Rooms
- B. Tinted Radius Safety Glass Windows
- C. High Rise Spring Faucet with Sprayer
- D. (4) Speaker Sound System
- E. LG® Solid Surface Counter Tops (Limited Time Options*)
- F. Decorative Overhead Dining Light
- G. Ceiling Fan with Light
- H. Curtain Rods and Night Shades in Living Room
- I. Cherry Slide Out Fascia Accents
- J. Hardwood Free Standing Table and 4 Chairs (Optional on Villa Classic)
- K. 84" Interior Heights



Estate

Estate

- A. Accent Glass Cabinet Doors
- B. 7' Tall Slide Out Heights
- C. 8' Tall Ceilings
- D. Beauflor® Cold, Crack and Tear Resistant Flooring
- E. Lazy Boy® Hide-A-Bed Sleeper Sofa
- F. Shaw® Residential Carpeting with R2X Stain Protection
- G. Brushed Nickel Hardware
- H. Raised-Panel Hardwood Overhead Doors
- I. 40" HD, LCD TV (Opt.)
- J. Residential Size Microwave
- K. 4-Burner Range with Oven and Vent Hood
- L. More Kitchen Counter Top Space
- M. Lazy Boy® Rocker Recliners

* See your dealer for more details about our Limited Time Options

Salem Villa Classic Standards & Options

Comfort & Convenience

- 84" interior height with cathedral ceilings
- Black framed tinted safety glass windows
- Powered self supporting slide rooms
- Pleated night shades
- Triple sealed slide outs
- Water heater by-pass
- 16-gallon per hour quick recovery DSI water heater
- Ducted Dometic® 13,500 BTU central air conditioner w/ quick cool feature
- In-floor ducted heat w/ 35K BTU furnace
- Stain resistant carpet with padding
- Flush-floor hydraulic slide rooms
- Systems monitor panel
- 6' 2" tall slide rooms
- Ultra lube axles
- Solid wood drawer fronts with ball bearing drawer guides
- 2 outside speakers
- Beauflor® flooring

Kitchen

- Extra large overhead cabinets
- Raised panel overhead cabinet doors
- 16 cu. ft. residential refrigerator
- 12-volt power range hood w/ light
- Whirlpool 1.6 cu ft oversized microwave
- Seamless one piece back splash
- Stainless single basin residential style sink

- Built in knife holder behind stove (some models)
- Thermoform countertops throughout
- 3 burner Piezo ignition range oven
- High rise spring faucet at kitchen sink
- Kitchen waste basket
- Pantry with shelves

Living Room

- **New** Bluetooth Radio with DVD and Remote
- Lazy-Boy® recliners (per floorplan)
- Lazy-Boy® Hide-a-bed sofa
- DVD/CD/FM stereo w/ mp3 hook-up
- Cathedral ceiling w/ ceiling fan
- Surround sound w/ TV hook-up
- Digital TV antenna w/ booster
- Cable and satellite ready
- Extra large picture window at dinette
- Extra large dinette for more comfortable dining and sleeping
- Decorative lights in slide-out

Bedroom

- **New** Seatech® Teddy Bear Bunk Mattresses
- Serta® Bradley mattress
- Designer residential bedspread with 5 pillows
- Lift-up beds w/ gas struts (most models)
- Cable TV hook-up
- Stain resistant carpet w/ padding
- Solid privacy doors

Bathroom

- Built-in wood medicine cabinet and mirror
- Ceiling light w/ convenient wall switch
- Porcelain foot flush toilet
- ABS tub or shower w/ one-piece surround

Exterior

- Cold crack and mildew resistant vinyl patio awning
- Patio door w/ screen
- Radius entry door
- 15" radial tires (16" with optional fiberglass exterior)
- Entry assist handle
- 2-30 lb. LP tanks w/ automatic change over & EZ access LP cover
- City water fill

Construction

- 10" Extruded I-beam frame (per model)
- Cambered chassis
- Fresh water tank
- 2" x 3" floor joists 12" on center
- 5/8" 5-ply tongue and groove plywood floor decking
- 2" wall studs maximum 16" on center
- 5" bowed truss roof rafters
- 3/8" walk-on roof decking
- R-7 insulation
- Seamless one piece roof w/ 12 year warranty

Security & Safety

- Smoke detector

- Fire extinguisher
- Carbon monoxide detector
- LP gas leak detector
- Amber porch light w/ interior switch
- Screen door w/ safety latch
- GFI receptacles and covered patio outlet
- Welded heavy duty safety chains
- Lockable fiberglass radius baggage doors
- Certified to meet all national highway traffic safety administration specs.

Salem Villa Classic Options

- **New** LED "Warm White" strip light above the Slide (Limited Time Options)
- **New** Designer Spring Kitchen Faucet (Limited Time Options)
- **New** Upgraded Kitchen Sink (Limited Time Options)
- LED colored awning light with remote (Limited Time Options)
- Gel coat fiberglass exterior
- 10-gallon gas/electric DSI water heater
- Skylight over tub
- Outside kitchen (402QBQ only)
- Free standing dinette w/ 4 chairs
- Outside shower
- Detachable Hitch
- Solid Surface Kitchen Countertop (Limited Time Option)
- LED interior lighting



Build to Last.

- 1** Radius triple entry steps
- 2** 102" exterior width for increased living space (96" on Villa Classic)
- 3** 110 volt residential style exterior light (Varies per model)
- 4** Standard patio door
- 5** 15" radial tires (16" with crème high gloss gel coat option)
- 6** 12" I-beam powder coated frame (per model)
- 7** 5/8" tongue and groove plywood flooring
- 8** Residential carpet w/ padding
- 9** Fender skirt
- 10** 2" wall studs 16" on center
- 11** 15K BTU high output A/C (13.5K on Villa Classic)
- 12** Seamless one-piece roof (12 yr. warranty)
- 13** 3/8" roof decking (Full walk-on roof)
- 14** R-7 fiberglass insulation throughout
- 15** Dual LP bottle cover w/ easy access
- 16** 5" truss roof rafters 16" on center
- 17** 0.024 aluminum siding (High gloss gel coat opt.)
- 18** 96" interior height (Villa Estate), 84" interior height (Villa Classic)
- 19** 30" Radius fiberglass door

AMISH CRAFTSMANSHIP

Only the finest attention to detail goes into each Salem. Our skilled craftsmen have many years of experience building beautifully finished cabinetry. The solid nature of our well-designed woodwork is another reason why Salem is the best built RV on the road.



A



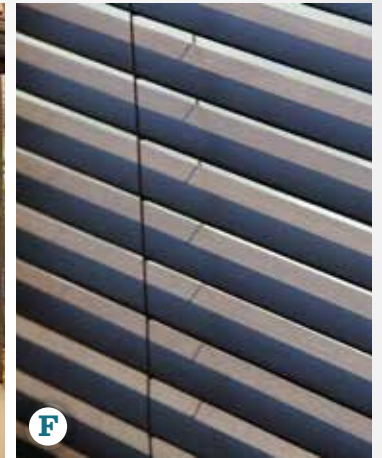
C



D



E



F



B

Salem Villa Classic / Villa Estate Popular Features



G



H



I

- A. New Accent Glass on Cabinets
- B. Lazy-Boy® Hide-A-Bed Sofa
- C. Frosted Glass Corner Shower (Per floorplan)
- D. 50" Walk-in Shower with Seat (Per floorplan)
- E. Cloth Night Shades (Villa Classic)
- F. 2" Wood Blinds (Villa Estate – Limited Time Options*)
- G. Stainless Steel Appliances and Residential Refrigerator
- H. Over Slide LED Accent Lighting (Limited Time Options*)
- I. Recessed Stove with Glass Cover
- J. LG® Solid Surface Countertops (Limited Time Options*)
- K. New Upgraded Seamless Backsplash
- L. Colored LED Awning Lights with Remote (Limited Time Options*)



J



K



L

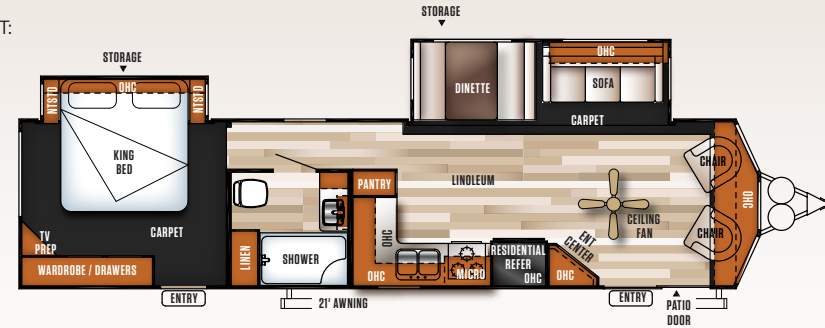
* See your dealer for more details about our Limited Time Options

Salem Villa Classic

Floorplans, Weights & Measures

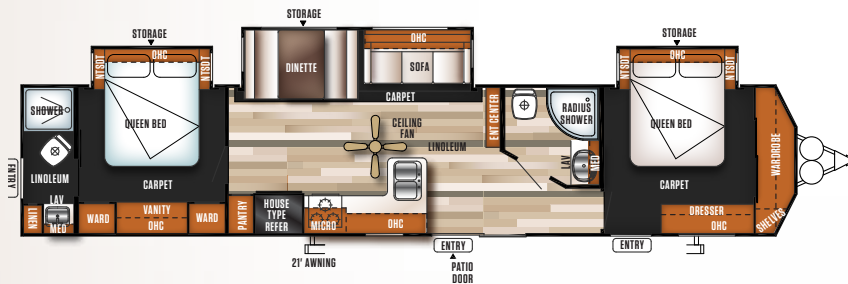
353FLFB

UNLOADED
VEHICLE WEIGHT:
8620



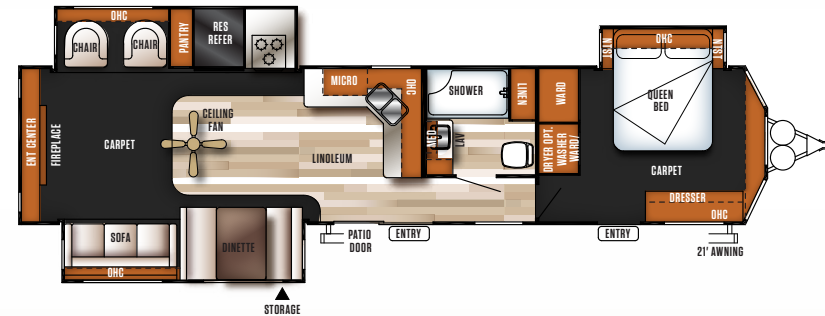
4002Q

UNLOADED
VEHICLE WEIGHT:
10240



400RETS

UNLOADED
VEHICLE WEIGHT:
10060



Floorplan Key

OHC	Overhead Cabinet
WARD	Wardrobe
MICRO	Microwave
LAV	Bathroom Sink
MED	Medicine Cabinet
	Villa Classic Floorplan
	Villa Estate Floorplan

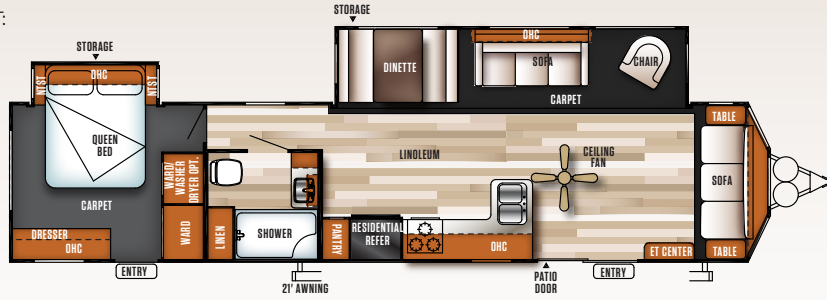
Weights & Measures

	T353FLFB	T39FDEN	T400RETS	T4002Q	T402QBQ	T426-2B	385FLBH	393FLT
HITCH WEIGHT (LBS.)	1290	1362	1375	1260	1075	1365	2148	1535
UNLOADED VEHICLE WEIGHT (LBS.)	8620	9725	10060	10240	10585	10175	10148	10970
CARGO CARRYING CAPACITY (LBS.)	2770	1737	1415	1120	2431	1290	3791	906
EXTERIOR LENGTH	38'6"	40'10"	40'9"	43'7"	40'8"	40'5"	38'6"	40'6"
EXTERIOR HEIGHT	11'11"	11'11"	11'10"	12'3"	12'3"	12'3"	12'6"	12'8"
FRESH WATER CAPACITY (GAL.)	40	40	40	40	40	40	40	40
BLACK WATER CAPACITY (GAL.)	40	40	40	70	70	62	43	40
GREY WATER CAPACITY (GAL.)	40	40	43	80	80	80	86	80
AWNING (FT.)	21'	21'	21'	21'	20'	21'	21'	21'

39FDEN

UNLOADED
VEHICLE WEIGHT:

9725



Salem

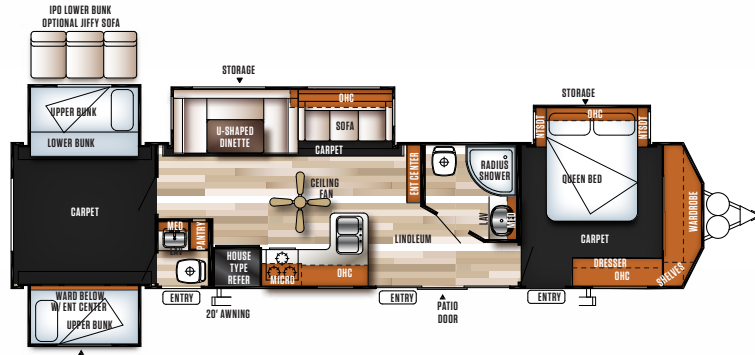
Villa Estate

Floorplans, Weights & Measures

402QBQ

UNLOADED
VEHICLE WEIGHT:

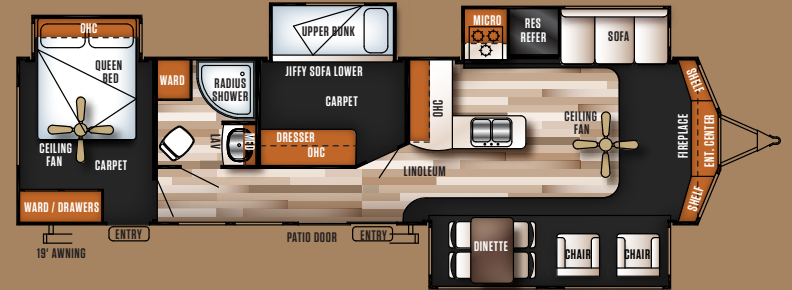
10585



385FLBH

UNLOADED
VEHICLE WEIGHT:

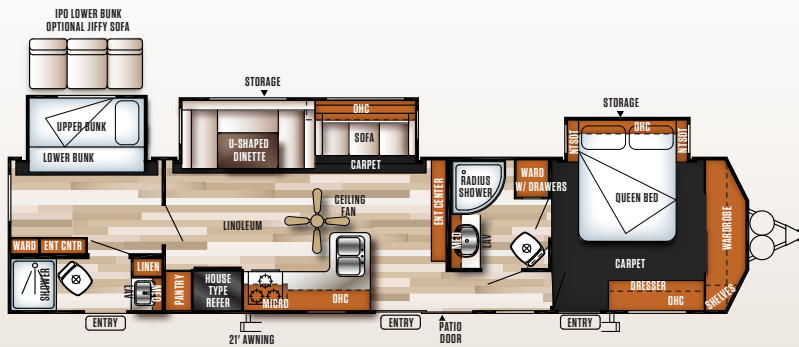
10148



426-2B

UNLOADED
VEHICLE WEIGHT:

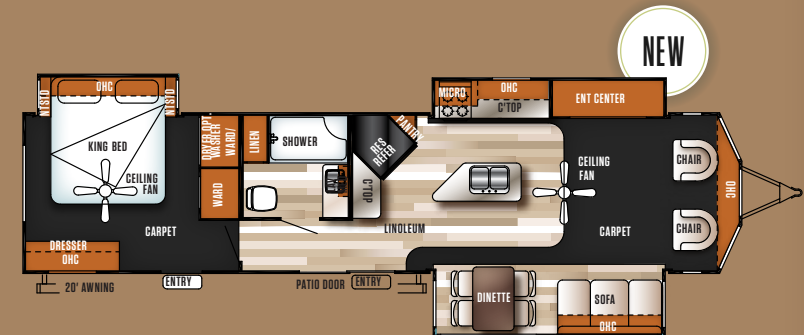
10175



393FLT

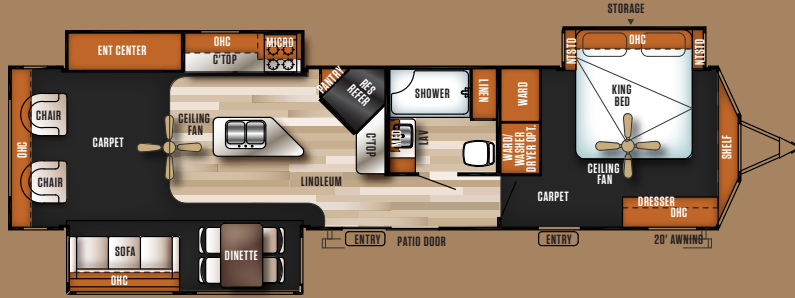
UNLOADED
VEHICLE WEIGHT:

10970



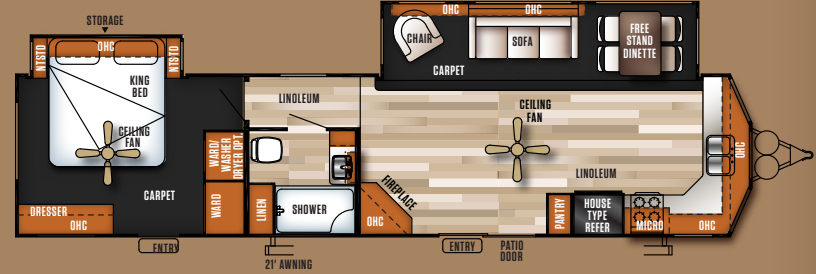
393RLT

UNLOADED VEHICLE WEIGHT:
10660



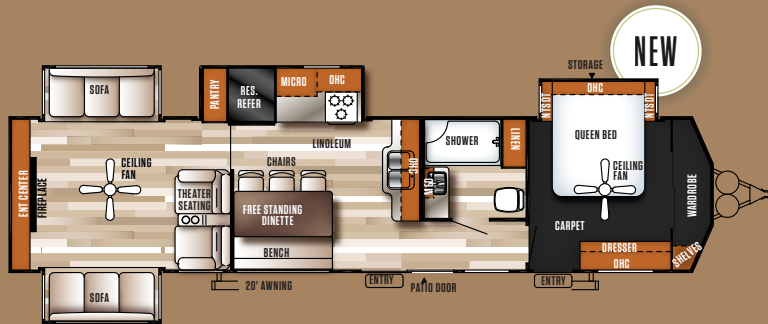
394FKDS

UNLOADED VEHICLE WEIGHT:
10075



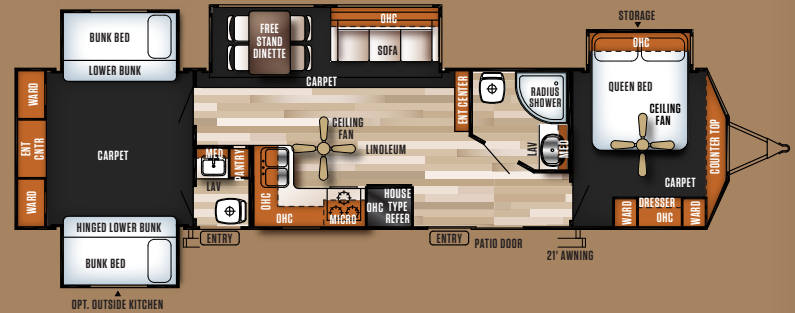
395RET

UNLOADED VEHICLE WEIGHT:
11298



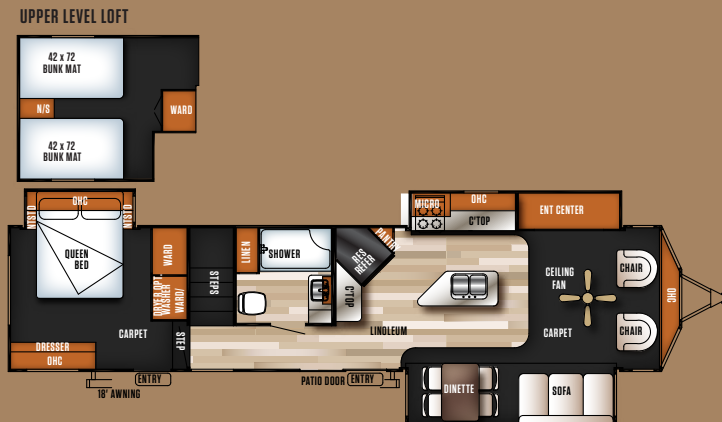
404X4

UNLOADED VEHICLE WEIGHT:
11280



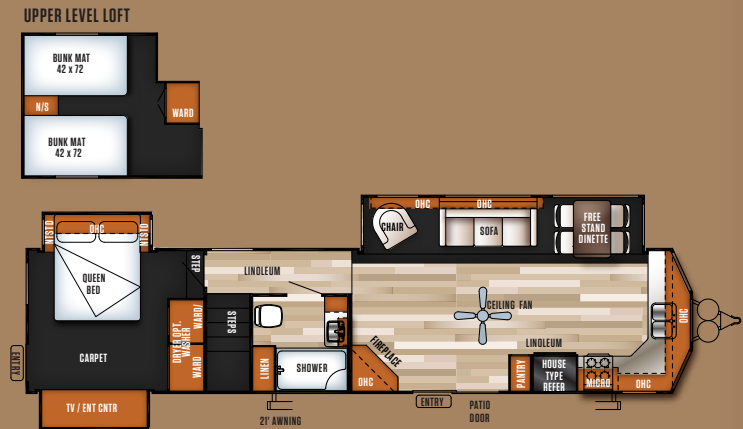
4092BFL

UNLOADED VEHICLE WEIGHT:
11853



4102BFK

UNLOADED VEHICLE WEIGHT:
11848



Salem Villa Estate Standards & Options

Comfort and Convenience

- 8 foot tall ceiling heights
- 7 foot tall slide heights
- Ceiling fan in living room and bedroom (na in 4092 and 4102 bedroom)
- Deluxe window package with tinted glass windows
- Beauflor® plank wood linoleum
- 102" exterior width for increased living space
- Water heater by-pass
- Wired and braced for second A/C
- Pleated night shades
- 20-gallon electric water heater
- Ducted Dometic® 15,000 BTU central air conditioner w/ quick cool feature
- In-floor ducted heat w/ 35K BTU furnace
- Flush-floor hydraulic slide rooms w/ manual override
- Systems monitor panel
- Shaw Stain resistant carpet with padding
- 50 amp electrical service and 65 amp 12 volt converter
- Solid hardwood drawer fronts

Kitchen

- 2 outlets in every kitchen
- Skylight in every kitchen
- Brushed nickle hardware
- Free standing dinette with 4 chairs

- Extra large raised panel overhead cabinets
- Full extension ball bearing drawer guides
- 20" free standing 4 burner gas range w/ oven
- 16 cu. ft. residential electric refrigerator
- Whirlpool 1.6 cu ft oversized microwave
- Pantry with shelves
- Thermoform countertops throughout

Living Room

- **New** Bluetooth DVD/CD/AM/FM stereo w/ MP3 hook-up
- Lazy boy sofa hide-a-bed
- Lazy boy rocker recliners (per floorplan)
- Surround sound TV hook-up
- 4 cube speakers
- Digital TV antenna w/ booster
- Cable and satellite door side hookup
- Glass sliding patio door w/ vertical blinds and screen door
- Ceiling fan with wall switch

Bedroom

- **New** Upgraded Seatech "Teddy Bear" Bunk Mattresses
- Extra large dresser drawers
- Shoe nook at foot of master bed
- Outlets at back-side of master-bed
- Serta® mattress

- Bedspread and decorative pillows
- Comfort Flex (box spring) bed frame and base with storage (most models)
- Under bed storage (most models)
- Cable TV hook-up
- Solid privacy doors

Bathroom

- 50" walk-in shower with seat (most models)
- Built-in wood medicine cabinet and mirror
- Full extension ball bearing drawer guides
- Porcelain foot flush toilet(s)
- 12" 10-blade Fantastic Bath Fan™
- Toothbrush holder and towel ring

Exterior

- Black exterior moldings
- (2) 110v lights on front (some models)
- Cold crack and mildew resistant vinyl awning
- 15" radial tires (per floorplan)
- 30 lb. double LP tanks w/ automatic change over
- EZ access LP tank cover
- City water fill w/ brass valve
- Swing out entry assist handle
- Two exterior speakers

Construction

- 12" forged I-beam frame
- Cambered chassis
- Seamless holding tanks
- Color coded water lines
- 2" x 3" floor joists 12" on center
- 5/8" 5-ply tongue and groove plywood floor decking
- 2" wall studs maximum 16" on center
- 5" bowed truss roof rafters
- 3/8" walk-on roof decking
- One-piece, seamless roof w/ 12 year warranty
- Triple sealed slide outs
- R-7 insulation throughout (floors, walls, ceilings, and slide-outs)

Security and Safety

- Smoke detector
- Fire extinguisher
- Carbon monoxide detector
- LP gas leak detector
- Door latch w/ integrated dead bolt lock
- Amber porch light w/ interior switch
- GFI receptacles and covered patio outlet
- Welded heavy duty safety chains
- ANSI 119.5
- Certified to meet all National Highway Traffic Safety Administration Specifications

Popular Options

- **New** LED "Warm White" strip light above the Slide (Limited Time Options)
- **New** Designer Spring Kitchen Faucet (Limited Time Options)
- **New** Upgraded Kitchen Sink (Limited Time Options)
- LED toe kick accent lighting (Limited Time Options)
- 2" wood blinds in living room and kitchen (Limited Time Options)
- LG® brand solid surface countertops (Limited Time Options)
- LED colored awning lights with remote (Limited Time Options)
- Central vacuum system (Limited Time Options)
- True high gloss Gelcoat fiberglass exterior
- Skylight over tub
- Detachable hitch
- Outside shower
- 10-gallon gas/electric DSI water heater (IPO 20 gal electric)

Weights & Measures

	393RLT	394FKDS	395RET	404X4	4092BFL	4102BFK
OHC Overhead Cabinet						
WARD Wardrobe						
MICRO Microwave						
LAV Bathroom Sink						
MED Medicine Cabinet						
HITCH WEIGHT (LBS.)	1492	1555	1468	1120	1605	1241
UNLOADED VEHICLE WEIGHT (LBS.)	10660	10075	11298	11280	11853	11848
CARGO CARRYING CAPACITY (LBS.)	2773	1580	2110	1780	1692	1333
EXTERIOR LENGTH	40'5"	40'10"	41'0"	41'0"	41'9"	41'6"
EXTERIOR HEIGHT	12'8"	12'8"	12'8"	12'8"	13'4"	13'4"
FRESH WATER CAPACITY (GAL.)	40	40	40	40	40	40
BLACK WATER CAPACITY (GAL.)	40	30	43	70	43	43
GREY WATER CAPACITY (GAL.)	80	80	80	80	86	86
AWNING (FT.)	21'	21'	21'	21'	18'	21'

FREE MEMBERSHIP
to Forest River Owners' Group

www.forestriverfrog.com



Learn More
Scan this barcode using a QR Reader on your smart phone to learn more about Forest River.



A Berkshire Hathaway company.

Forest River, Inc. 55470 C.R. 1 Elkhart, IN 46515 | (574) 533-5934
www.forestriverinc.com/Salem | www.forestriveraccessories.com

The Salem Line-Up



SALEM



SALEM CRUISE LITE



SALEM VILLA | VILLA ESTATE



SALEM HEMISPHERE

YOUR SALEM DEALER

2017

Specification Definitions

GVWR (Gross Vehicle Weight Rating) - is the maximum permissible weight of the unit when fully loaded. It includes all weights, inclusive of all fluids, cargo, optional equipment and accessories. For safety and product performance do NOT exceed the GVWR.

GAWR (Gross Axle Weight Rating) - is the maximum permissible weight, including cargo, fluids, optional equipment and accessories that can be safely supported by a combination of all axles.

UVW (Unloaded Vehicle Weight)* - is the typical weight of the unit as manufactured at the factory. It includes all weight at the unit's axle(s) and tongue or pin and LP Gas. The UVW does not include cargo, fresh potable water, additional optional equipment or dealer installed accessories.

*Estimated average based on standard build optional equipment.

CCC (Cargo Carrying Capacity)** - is the amount of weight available for fresh potable water, cargo, additional optional equipment and accessories. CCC is equal to GVWR minus UVW. Available CCC should accommodate fresh potable water (8.3 lbs per gallon). Before filling the fresh water tank, empty the black and gray tanks to provide for more cargo capacity.

** Estimated average based on standard build optional equipment

Each Forest River RV is weighed at the manufacturing facility prior to shipping. A label identifying the unloaded vehicle weight of the actual unit and the cargo carrying capacity is applied to every Forest River RV prior to leaving our facilities.

The load capacity of your unit is designated by weight, not by volume, so you cannot necessarily use all available space when loading your unit.

All information contained in this brochure is believed to be accurate at the time of publication. However, during the model year, it may be necessary to make revisions and Forest River, Inc., reserves the right to make all such changes without notice, including prices, colors, materials, equipment and specifications as well as the addition of new models and the discontinuance of models shown in this brochure. Therefore, please consult with your Forest River dealer and confirm the existence of any materials, design or specifications that are material to your purchase decision. Litho. U.S.A. FOR 1338 P/W: 2016.11.14

24/7 EMERGENCY ROADSIDE ASSISTANCE

For a worry-free ownership experience Forest River includes one year of Coach-Net RV Technical & Roadside Assistance with each RV purchase. Whether new to the RV lifestyle or an experienced RV enthusiast, Forest River owners have 24/7 access to technical, operational and emergency road service coverage throughout the US & Canada. Coach-Net's fast, dependable service is just a phone call away.

Coach-Net®

RV Technical & Roadside Assistance

Forest River owners have 24/7 access to technical, operational and emergency road service coverage throughout the US & Canada. Coach-Net's fast, dependable service is just a phone call away.



Forest River, Inc. encourages our customers to purchase their Forest River products from a local dealership whenever possible for the following reasons:

- 1) Forest River, Inc. dealers are independently owned and operated businesses so priority service and scheduling is at their discretion and is often provided to customers that purchased their unit at that dealership.
- 2) Purchasing locally allows customers to establish meaningful relationships with a dealer, enhancing the RV experience through assistance with product questions, user tips or RV regulations for your state or country, and much more!
- 3) Canadian customers must meet requirements to bring an RV purchased out of the country to their home. These requirements may involve additional inspections and certifications, taxes and fees. Your local Canadian Dealer is a professional at meeting these requirements.
- 4) Scheduling timely warranty repairs and adjustments through a local dealership provides far greater flexibility and convenience to you, the customer!

It is the goal of Forest River, Inc. that all of our RV owners fully enjoy the RV experience and that customer satisfaction meets or exceeds their expectations!



PRE-DELIVERY INSPECTION FACILITY

20,000 square feet of quality assurance. The bare essentials for a premium product. This state-of-the-art facility gives immediate daily feedback to production for quality assurance in every unit built.