

Sandpiper HT



Find us on Facebook
keyword "Sandpiper RV's"

LIGHTWEIGHT FIFTH WHEELS



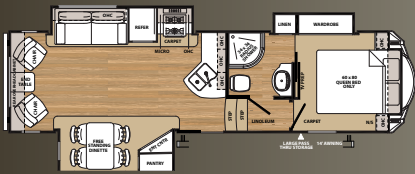


1



2850RL

CREAM DECOR



Sandpiper HT

AT HOME ON THE ROAD.

The Sandpiper 2850RL is a great addition to the Sandpiper fifth wheel fleet. Opposing rear slides make for a large living area with ample floor space. Both the hide-a-bed and two recliners are in view of the 40" LED TV. All of this living space and still under 8000 Lbs. making towing easy for all kinds of trucks.





3

FEATURES

HI RISE FAUCET. SANDPIPER'S HI-RISE FAUCET WITH PULL OUT SPRAYER IS BOTH FUNCTIONAL AND STYLISH.

CONVENIENT FEATURES. OUR STAINLESS STEEL DIGITAL MICROWAVE IS A GREAT WAY TO HEAT UP A CUP OF TEA OR MAKE A QUICK SNACK.

RESIDENTIAL FINISHES. ALL SANDPIPER KITCHENS FEATURE MOCHA ACCENT CROWN MOLDING OVER THE CABINETS.

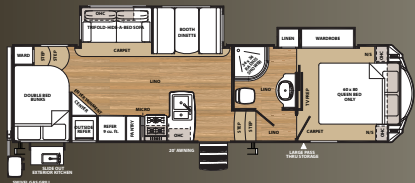
PENDANT LIGHTING. OUR PENDENT LIGHTING FIXTURES ARE JUST ONE MORE EXAMPLE OF OUR COMMITMENT TO TRUE RESIDENTIAL DESIGN.





3275DBOK

BRANDY DECOR



Sandpiper HT



THOUGHTFUL DESIGN.

The 3275 is a great unit for packing up the kids for a long weekend in the woods. Large rear bunks allow for sleeping 4 and that doesn't even count the hide-a-bed. At under 8000 Lbs. and 33 feet long, towing is a breeze.





A



B



C



D



E



F



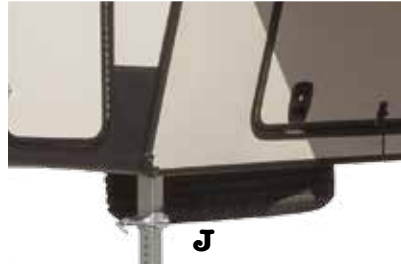
G



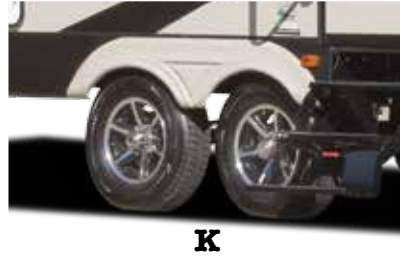
H



I



J



K



L



5

EXTERIOR FEATURES

- A** HICKORY SPRINGS TRIPLE ENTRY STEP
- B** GEL COAT FIBERGLASS PROTECTS FROM UV RAYS AND PREVENTS YELLOWING AND CRACKING
- C** SANDPIPER'S LIGHTED DOCKING STATION
- D** ENTRY DOOR WINDOW WITH INTEGRATED NIGHT SHADE

- E** HEATED AND ENCLOSED UNDERBELLY PROTECTS YOUR COACH AND IMPROVED AIRFLOW ALLOWS FOR A STURDIER RIDE
- F** INSULATED HEAVY DUTY SLAM LOCK BAGGAGE DOORS
- G** SANDPIPER'S CONTROL PANEL ALLOWS YOU TO MONITOR TANKS AND OTHER SYSTEMS QUICKLY AND EASILY
- H** DRIP RAIL WITH EXTRA LONG DRIP SPOUTS HELP PREVENT BLACK STREAKING

- I** POWER FRONT JACKS WITH QUICK RELEASE SNAP PINS
- J** FULL SIZE SPARE TIRE CONVENIENTLY MOUNTED FOR QUICK AND EASY ACCESS
- K** CONTEMPORARY ALUMINUM RIMS WITH D-RATED RADIAL TIRES
- L** CONTROL THE TEMPERATURE WITH THE DUAL ZONE DOMETIC® THERMOSTAT



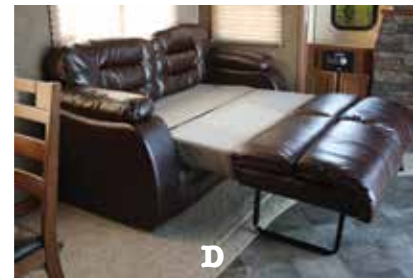
A



B



C



D



E



F



G



H



I



J



K



L

6

INTERIOR FEATURES

- A** HANDCRAFTED FASCIA GIVES THE SLIDE-OUT A DISTINGUISHED LOOK.
- B** RESIDENTIAL MEMORY FOAM MATTRESS
- C** LED HDTV WITH PREMIUM SOUNDBAR AND SONY DVD PLAYER
- D** THE TRI-FOLD HIDE-A-BED SOFA OFFERS YOU AND YOUR GUESTS MORE SLEEPING OPTIONS

- E** CONTEMPORARY CEILING FAN.
- F** REAL WOOD DRAWERS ON SOFT CLOSE, FULL EXTENSION, BALL BEARING DRAWER GUIDES
- G** ENJOY THE WARMTH AND COMFORT OF THE ELECTRIC FIREPLACE.
- H** MOCHA ACCENTED CROWN MOLDING GIVES THE SANDPIPER KITCHEN A TRULY RESIDENTIAL FINISH.

- I** THE SANDPIPER SIGNATURE PACKAGE INCLUDES STAINLESS STEEL APPLIANCES.
- J** CONTEMPORARY MASTER BEDROOM HEADBOARD WITH INTEGRATED LED LIGHTING
- K** THEATER SEATING WITH FOOTRESTS, HEAT AND MASSAGE, LED LIGHTING AND CONSOLE STORAGE. (PER FLOORPLAN).
- L** PORCELAIN FOOT FLUSH TOILET, EASY TO USE, EASY TO CLEAN.

STANDARDS AND OPTIONAL FEATURES

EXTERIOR FEATURES

- Color match high gloss gel coated colored exterior fiberglass
- Painted two tone aerodynamic fiberglass front cap with improved turning radius
- Enclosed and heated dump valves
- Large tinted windows with 80/20 UV prohibitor
- Hickory Springs® radius triple steps with 9" riser (no pinched fingers)
- "One Touch" Dometic® electric awning w/LED light strip
- Power front jacks with spring loaded snap pins
- 15" Radial tires-D Rated
- Automotive-style fender skirts
- Hitch light
- Exterior refrigerator (per floorplan)
- Porch light with interior switch
- 30 lb. double LP tanks with auto change over
- 2 exterior speakers
- Rain gutters with extra long drip spouts (prevents black streaking)
- Insulated heavy duty slam lock baggage doors
- Exterior foldable grab handle
- Unobstructed pass-through storage area
- Upgraded aluminum rims
- 4,400 Lb. axles
- Friction hinge entry door

INTERIOR FEATURES

- Stainless steel appliances
- Beauflor® rustic wood plank linoleum
- Decorative backsplash
- Four color coordinated interiors (Chestnut, Cream, Pecan, Brandy)
- Soft close full extension drawer glides
- Stone cast under mounted kitchen sink
- Delight Maple handmade cabinetry with screwed lumber core stile construction
- LED lighting throughout
- Solid surface countertops
- Recessed residential lighting
- Accent paneling in slideouts
- Accent lighting over dinette
- Walk-in shower with seat (3350BH only)
- Mocha accent crown molding over kitchen cabinets
- Extra large picture windows throughout
- Vented side windows in slideouts
- TV antenna with booster
- Solid wood drawer fronts with birch sides

- Upgraded raised panel cabinet doors with designer rails
- Bedroom slideout fascia
- Serta® memory foam mattress
- Teddy Bear® bunk mats
- 40" flatscreen TV (32" std. in 3275DBOK)
- Premium soundbar with Sony® DVD player
- Designer window treatment accented per decor
- 9 cu. ft. stainless refrigerator
- Ceiling fan
- Tri-fold hide-a-bed sofa
- Residential stain resistant carpet
- Center mounted A/C unit for even cooling
- Quilted bedspread

APPLIANCES/SYSTEMS

- Dual zone ducted High Performance Dometic® (second A/C prep)
- 9 cu. ft. refrigerator
- Dual zone thermostat for living room and bedroom A/C
- Floor ducted 35,000 BTU furnace
- OTR stainless steel microwave
- Three burner high output range with 22" oven
- Interior monitor panel for holding tanks
- Satellite and cable hookup with RG-6 cable for high quality picture
- Porcelain foot flush toilets
- 6 Gal. DSI water heater
- 65 Amp converter
- EZ Breeze® power fan in bathrooms

CONSTRUCTION

- Welded aluminum-framed, vacuum bonded laminated superstructure
- 3/8" roof decking (full walk-on roof)
- Cambered powder coated frame with rust prohibitor
- Fully enclosed heated underbelly
- 5" truss roof rafters
- R-10E sidewall construction
- Laminated sidewalls
- Laminated slideout walls
- Laminated floors

FOR YOUR SAFETY

- Smoke alarm
- Fire extinguisher
- Breakaway switch (battery hook-up required)
- Dead-bolt lock on entry door
- LP/CO₂ gas detector
- Fire escape windows

POPULAR OPTIONS

- Free standing dinette IPO booth dinette
- Theater seating IPO recliners (where available)
- Recliners IPO theater seating
- Second air conditioner in bedroom (ducted)
- Fantastic fan (where available)
- Heated holding tanks
- R-38e roof & all floors insulation
- Tile style Beauflor®
- Electric stabilizer jacks - 1 pair
- Roto flex hitch pin
- Central vacuum
- Slide room awnings (all slides)
- Spare tire kit (15")
- Roof Ladder
- 10 Gal. DSI water heater
- Electric 4 point leveling system

OPTIONAL POLAR TECH PACKAGE

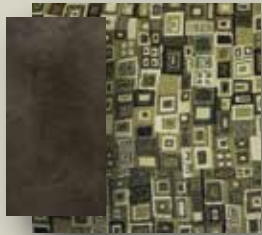
- Thermal pane windows
- Heated holding tanks
- R-38E roof & all floors insulation
- 40K BTU furnace
- Double fiberglass insulation in roof & floor

SANDPIPER HT LUXURY PACKAGE

- 9 cu. ft. stainless refer
- Stainless appliance package
- Serta memory foam mattress
- 30" OTR microwave
- Kitchen backsplash
- Soft close residential drawers
- Docking station
- Color matched gel-coated fiberglass exterior
- 40" Flat screen television (most models)
- Premium sound bar with Sony DVD player
- EZ Breeze power fan in bathroom(s)
- Tri fold hide-a-bed
- "One touch" Dometic electric awning w/LED light strip
- LED interior lighting throughout
- Residential stain resistant carpet
- Slam lock baggage doors
- 15K air conditioner w/prep for 2nd A/C
- Residential pullout kitchen faucet
- "Rustic Wood" Beauflor™ flooring
- Aluminum wheels
- Aerodynamic two tone fiberglass painted front cap
- Water filter system



DECOR OPTIONS



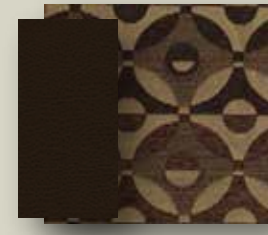
CHESTNUT INTERIOR



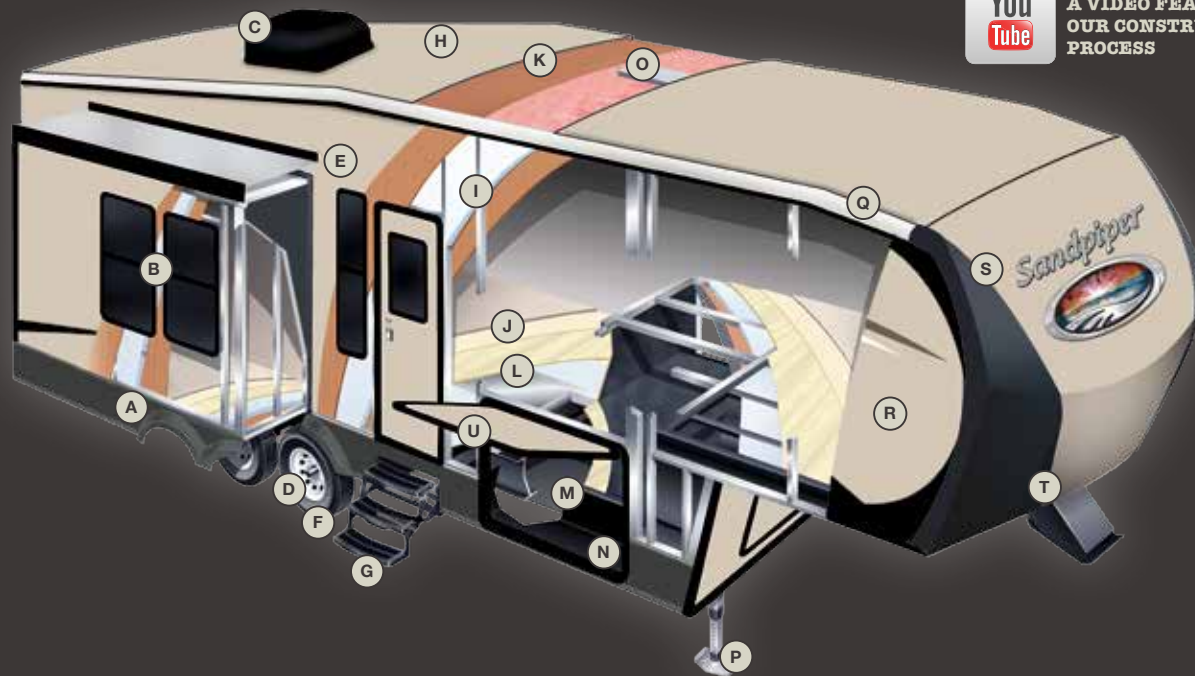
CREAM INTERIOR



PECAN INTERIOR



BRANDY INTERIOR



SEARCH YOUTUBE FOR
A VIDEO FEATURING
OUR CONSTRUCTION
PROCESS

CONSTRUCTION

- A ROLLED ALUMINUM SIDE SKIRTING
- B TINTED SAFETY GLASS WINDOWS (80%)
- C DUAL ZONE DUCTED 15K BTU AIR CONDITIONING
- D DEXTER AXLES WITH AUTO ADJUST BRAKES
- E LAMINATED VACUUM BONDED ALUMINUM SIDEWALLS
- F 15" D-RATED RADIAL TIRES (STANDARD)
- G HICKORY SPRINGS RADIUS TRIPLE ENTRY STEPS
- H COLOR MATCHED SEAMLESS RUBBER ROOF (12 YR. WARRANTY)
- I 2" BLOCK FOAM INSULATION
- J DELUXE STAIN RESISTANT CARPET WITH PADDING
- K 3/8" ROOF DECKING (FULL WALK-ON ROOF)
- L LAMINATED FLOOR
- M ENCLOSED, HEATED UNDERBELLY
- N I-BEAM POWDER-COATED FRAME W/ RUST INHIBITOR
- O A/C DUCT
- P POWER FRONT JACKS WITH QUICK RELEASE SNAP PINS
- Q SLEEK RADIUS ROOF
- R PAINTED COLOR MATCHED HIGH GLOSS GEL-COATED FIBERGLASS EXTERIOR
- S TWO TONE GEL-COAT FIBERGLASS FRONT CAP (STANDARD)
- T IMPROVED FRONT CAP FOR SHARPER TURNING RADIUS
- U INSULATED SLAM LOCK BAGGAGE DOORS

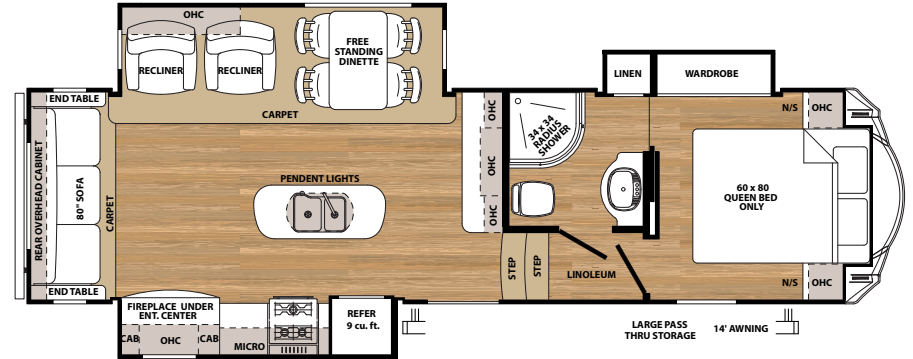
BUILT TO LAST

The Sandpiper is built to last using only the best materials to ensure that your coach is in it for the long haul. Careful engineering, well appointed craftsmanship and an uncompromising sense of pride go into every fifth wheel that we produce. Rest assured that your Sandpiper is built for luxury living.

2850RL

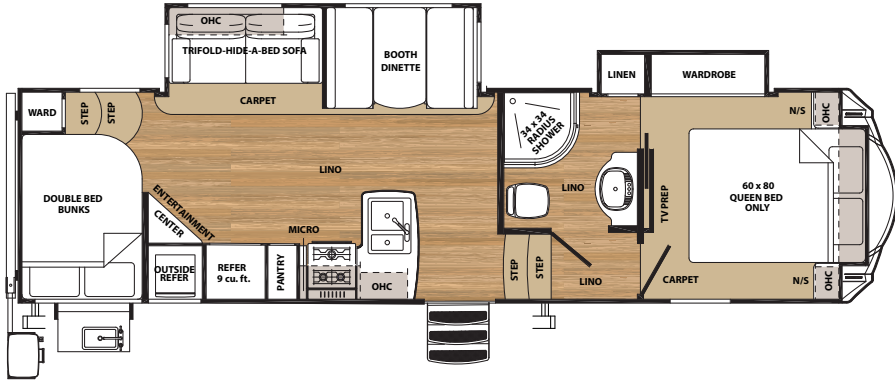


3250IK

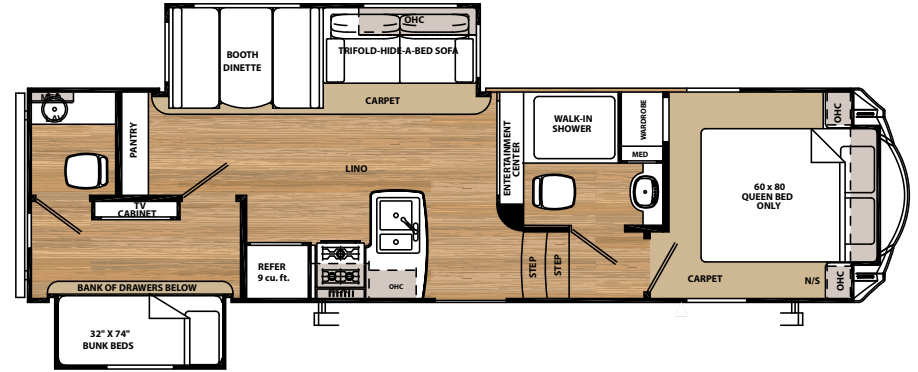


Sandpiper HT

3275DBOK



3350BH



SPECIFICATIONS

MODEL	2850RL	3250IK	3275DBOK	3350BH
HITCH	1,472	1,580	1,373	1,590
UVW	7,815	8,391	7,909	8,370
GVWR	10,000	10,000	10,000	10,000
CARGO	2,185	1,609	2,091	1,630
LENGTH	32'6"	33'2"	33'5"	33'7"
HEIGHT	12'10"	12'10"	12'10"	12'10"
AWNING	14'	14'	19'	18'
GRAY	60	60	60	60
BLACK	30	30	30	60
FRESH	43	43	43	43

PLEASE SEE BACK COVER FOR MORE INFORMATION REGARDING WEIGHTS.

GVWR (Gross Vehicle Weight Rating) - is the maximum permissible weight of the unit when fully loaded. It includes all weights, inclusive of all fluids, cargo, optional equipment and accessories. For safety and product performance do NOT exceed the GVWR.

GAWR (Gross Axle Weight Rating) - is the maximum permissible weight, including cargo, fluids, optional equipment and accessories that can be safely supported by a combination of all axles.

UVW (Unloaded Vehicle Weight)* - is the typical weight of the unit as manufactured at the factory. It includes all weight at the unit's axle(s) and tongue or pin and LP Gas. The UVW does not include cargo, fresh potable water, additional optional equipment or dealer installed accessories.

*Estimated Average based on standard build optional equipment.

CCC (Cargo Carrying Capacity)** - is the amount of weight available for fresh potable water, cargo, additional optional equipment and accessories. CCC is equal to GVWR minus UVW. Available CCC should accommodate fresh potable water (8.3 lbs per gallon). Before filling the fresh water tank, empty the black and gray tanks to provide for more cargo capacity.

** Estimated average based on standard build optional equipment

Each Forest River RV is weighed at the manufacturing facility prior to shipping. A label identifying the unloaded vehicle weight of the actual unit and the cargo carrying capacity is applied to every Forest River RV prior to leaving our facilities.

The load capacity of your unit is designated by weight, not by volume, so you cannot necessarily use all available space when loading your unit.

All information contained in this brochure is believed to be accurate at the time of publication. However, during the model year, it may be necessary to make revisions and Forest River, Inc., reserves the right to make all such changes without notice, including prices, colors, materials, equipment and specifications as well as the addition of new models and the discontinuance of models shown in this brochure. Therefore, please consult with your Forest River dealer and confirm the existence of any materials, design or specifications that are material to your purchase decision.



Sandpiper HT



PRE-DELIVERY INSPECTION FACILITY

20,000 square feet of quality assurance. The bare essentials for a premium product. This state-of-the-art facility gives immediate daily feedback to production for quality assurance in every unit built.

CUSTOMER SATISFACTION



www.ForestRiverBuyLocal.com

24/7 EMERGENCY ROADSIDE ASSISTANCE

For a worry-free ownership experience

Forest River includes one year of Coach-Net RV Technical & Roadside Assistance with each RV purchase. Whether new to the RV lifestyle or an experienced RV enthusiast, Forest River owners have 24/7 access to technical, operational and emergency road service coverage throughout the US & Canada. Coach-Net's fast, dependable service is just a phone call away.

Coach-Net[®]
RV Technical & Roadside Assistance



FREE MEMBERSHIP
to Forest River Owners' Group

www.forestriverfrog.com



Learn More

Scan this barcode using a QR Reader on your smart phone to learn more about Forest River.



A Berkshire Hathaway company.

Forest River, Inc.
55470 C.R. 1, Elkhart, IN 46515
(574) 389-4600
www.forestriverinc.com/Sandpiper
www.forestriveraccessories.com

YOUR LOCAL SANDPIPER DEALER



Find us on Facebook
keyword "Sandpiper RV's"