



FOREST RIVER  
**VIBE**



FOREST RIVER  
**VIBE**



# V

## VALUE

---

- **NXG USA STEEL FRAME**
  - 5 TIMES STRONGER THAN WELDED
- **VACUUM BONDED WALLS AND SLIDEOUT ROOMS, and 2" LAMINATED FLOORING**
- **SUPERFLEX ROOF (THERMOPLASTIC POLYOLEFIN) WALKABLE, LOW MAINTENANCE, LIGHTWEIGHT, EXCELLENT UV PROTECTION. MOLD, ALGAE AND FUNGUS RESISTANT.**
  - 12 YEAR WARRANTY

# I

## INNOVATIVE DESIGN

---

- **AERODYNAMIC PAINTED FIBERGLASS FRONT CAP**
- **ENCLOSED PROPANE TANKS AND BATTERIES**
- **LED LIGHTING**
  - UNDER AWNING
  - THROUGHOUT UNIT
  - UNDER COUNTERTOPS
  - EXTERIOR SPEAKERS
  - LED GROUND EFFECT LIGHTING

# B

## **BEST IN CLASS FEATURES**

- **WHIRLPOOL® 10.7 CUBIC FOOT RESIDENTIAL REFRIGERATOR**
- **STAINLESS STEEL APPLIANCE PACKAGE**
  - REFRIGERATOR
  - MICROWAVE
  - 3 BURNER RANGE/ 22" OVEN
- **WALK AROUND QUEEN BEDS**
- **HARDWOOD PRIVACY DOORS**
- **LARGE POT AND PAN DRAWERS UNDER DINETTE**
- **HEATED AND ENCLOSED UNDERBELLY**
- **82" BARRELED CEILING**

# E

## **EASE and CONVENIENCE**

- **REMOTE CONTROL SETUP**
  - POWER STAB JACKS FRONT AND REAR
  - POWER TONGUE JACK
  - LED AWNING LIGHT
- **WIDE STANCE AXLES**
- **POWER AWNING**
- **SMOOTH EXTERIOR SIDEWALLS**
  - EASY MAINTENANCE
  - DURABILITY
- **LAUNDRY CHUTE**
  - DIRECTLY TO PASS THRU
- **BLACK TANK FLUSH**





268RKS Front to Back View | Brindle Decor

# WELCOME TO **VIBE**

**AT VIBE WE ARE DEDICATED TO BRINGING YOU THE BEST CAMPING EXPERIENCE POSSIBLE. EACH UNIT IS DESIGNED WITH COMFORT AND CONVENIENCE IN MIND. WE OFFER FLOORPLANS FOR FAMILIES AND COUPLES ALIKE, AND OUTFIT THEM WITH HIGH END FINISHES PREVIOUSLY ONLY OFFERED ON UNITS AT MUCH HIGHER PRICE POINTS. TAKE A LOOK AT WHAT WE HAVE TO OFFER AND YOU WILL DEFINITELY FEEL THE VIBE!**



268RKS Bathroom





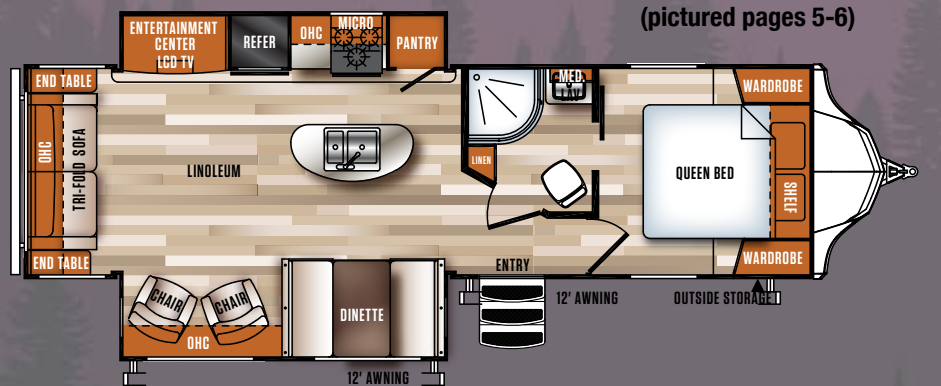
288RLS Back to Front View | Marble Decor

# NON-BUNK MODELS

## 268RKS (pictured pages 3-4)



## 288RLS (pictured pages 5-6)



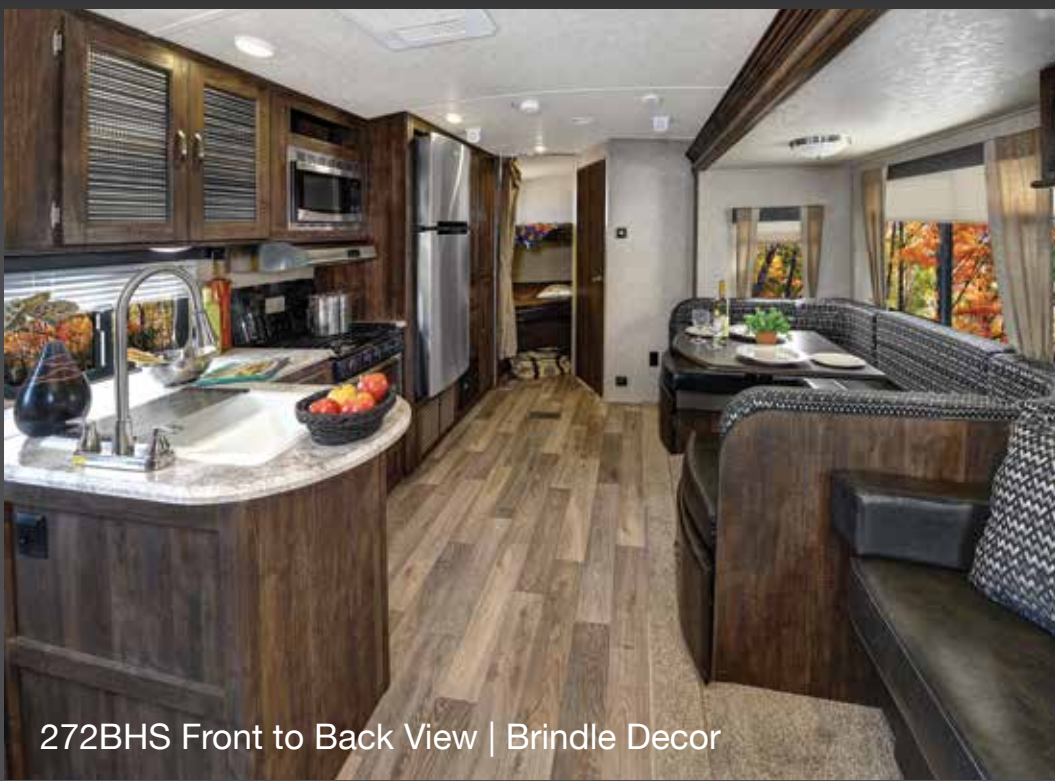
288RLS Bedroom



288RLS Pantry







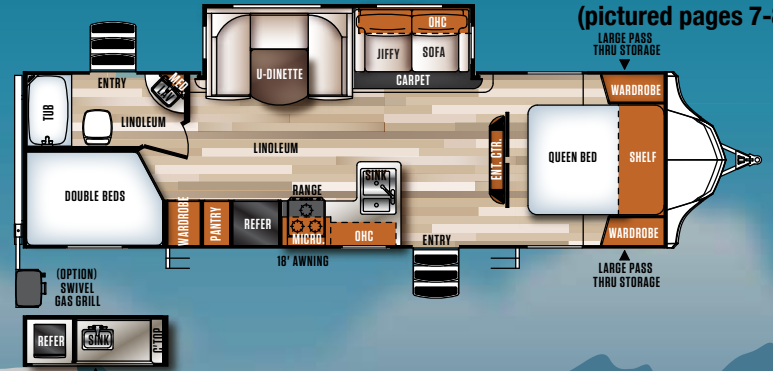
272BHS Front to Back View | Brindle Decor



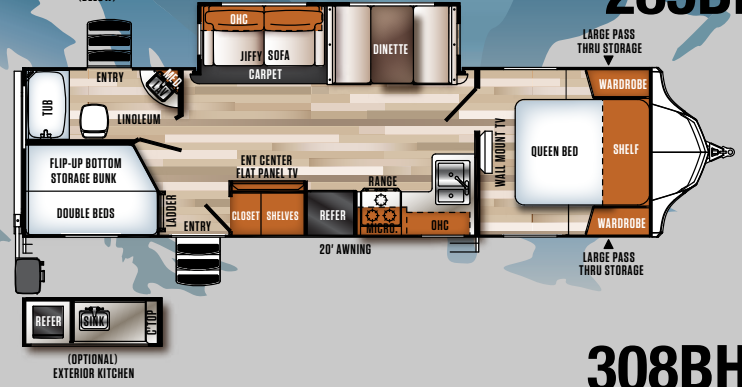
272BHS Bedroom

# BUNKHOUSE MODELS

## 272BHS (pictured pages 7-8)



## 285BHS



## 308BHS (pictured pages 9-10)







308BHS Bunkroom

FOREST RIVER

# VIBE

**Stress Free Setup**  
**Upscale Modern Design**  
**Premium Features**  
**Unmatched Value**



308BHS Front to Back View | Brindle Decor



308BHS Full Size Exterior Kitchen



313BHS Back to Front View | Marble Decor



313BHS Front to Back View | Marble Decor



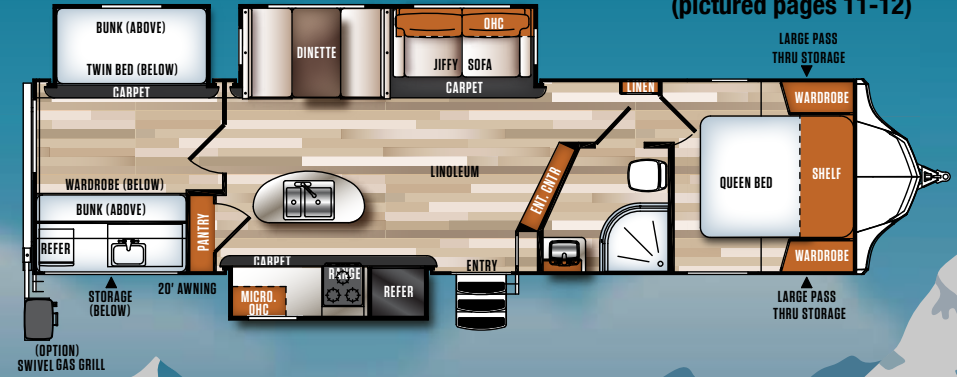
313BHS Bunkroom (TV not included)

# BUNKHOUSE MODELS

CONTINUED

## 313BHS

(pictured pages 11-12)

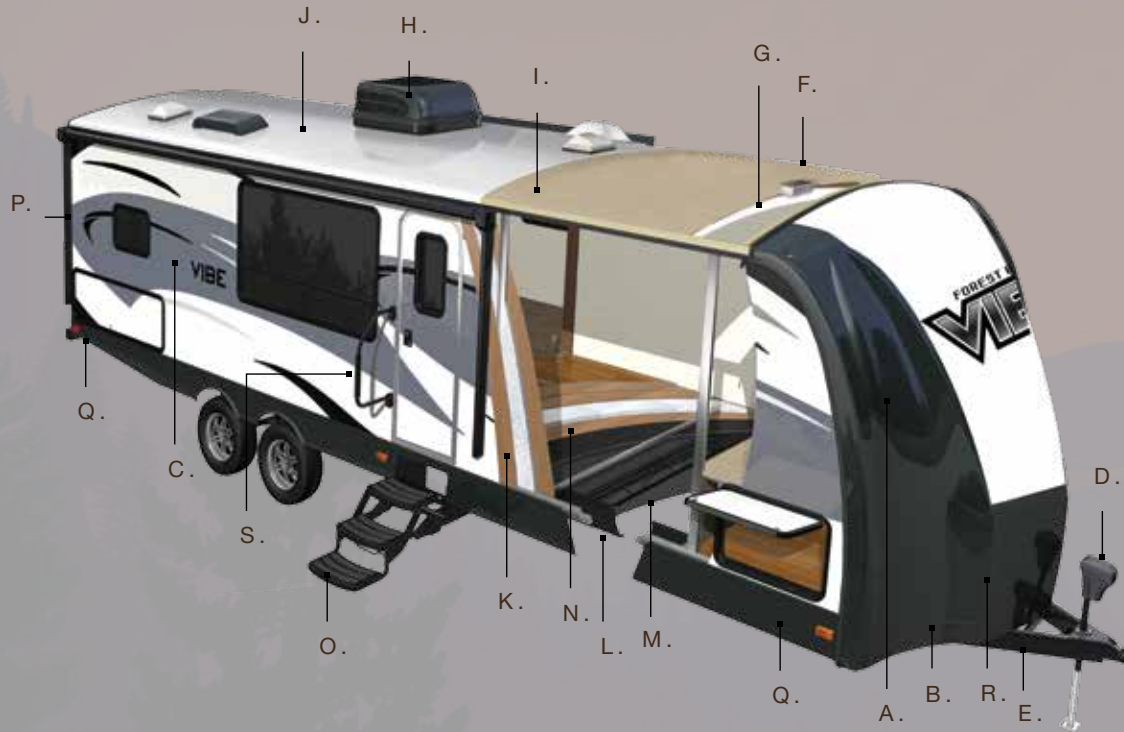


## 323QBS



323QBS Bunkroom (TV not included)

# CONSTRUCTION AND FEATURES



- A. High gloss, fiberglass painted front cap
- B. Sprayed-on heavy duty stone guard
- C. Tri-tone exterior fiberglass
- D. Electric tongue jack
- E. Dual battery tray
- F. Engineered crowned roof rafters
- G. R-14 insulated ceiling
- H. 13.5 BTU high output air conditioning with insulated ducts
- I. 3/8" roof decking (full walk-on roof)
- J. One piece seamless super flex roof
- K. R-8 laminated vacuum-bonded aluminum framed sidewalls
- L. Light weight powder-coated steel frame
- M. Enclosed underbelly
- N. R-11 insulated aluminum framed laminated floor
- O. Triple entry steps
- P. Laminated rear wall
- Q. Power front/rear stabilizing jacks
- R. Enclosed 20 Lbs. LP tanks
- S. XL grab handle



COLORED LED AWNING LIGHT WITH REMOTE



UNDER COUNTER LED LIGHTING



UNDER BOOTH DINETTE STORAGE



LED GROUND EFFECT LIGHTING



RESIDENTIAL WINDOW TREATMENTS



10.7 CU. FT. WHIRLPOOL RESIDENTIAL REFER w/ 1000 WATT INVERTER



6 SPOKE ALUMINUM RIMS



HIGH RISE FAUCET WITH PULL OUT SPRAYER



POWER STAB JACKS



WALK AROUND QUEEN BED AND BEDSPREAD

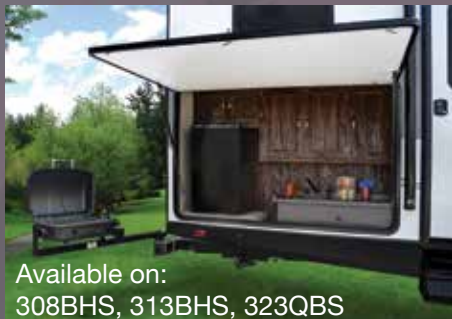


LARGEST OVEN IN ITS CLASS

# STANDARDS AND OPTIONS

## EXTERIOR STANDARD FEATURES

- HYPER LYTE CONSTRUCTION - AMAZINGLY LIGHT!!
- TRI-TONE GEL COAT FIBERGLASS W/ UPGRADED GRAPHICS PACKAGE
- VACUUM BONDED "ALUMA FRAME" SIDE WALLS AND 2" LAMINATED FLOOR
- AERODYNAMIC PAINTED FIBERGLASS FRONT CAP W/SPRAY ON ROCK GUARD
- DUCTED 13.5 BTU AIR CONDITIONING
- HIGH EFFICIENCY A/C COOLING SYSTEM (LARGER DUCT WORK)
- CABLE & SATELLITE PREP
- DIGITAL TV ANTENNA W/ BOOSTER
- EXTRA LARGE, ALUMINUM FRAMED, PASS THRU STORAGE
- ONE TOUCH ELECTRIC AWNING
- LED GROUND EFFECT LIGHTING
- LED LIGHTED EXTERIOR SPEAKERS (2)
- XL GRAB HANDLE
- COACH-NET ROADSIDE ASSISTANCE
- RADIAL TIRES FILLED W/ NITROGEN
- HEATED AND ENCLOSED UNDERBELLY
- STABILIZER JACKS
- 2- 20# LP BOTTLES
- 30" FRICTION HINGE ENTRY DOOR



Available on:  
308BHS, 313BHS, 323QBS



Available on:  
268RKS, 272BHS, 285BHS

## INTERIOR STANDARD FEATURES

- REEDED GLASS IN KITCHEN CABINETS
- 3-BURNER COOK TOP W/ STAINLESS STEEL 22" OVEN
- LARGE DOUBLE BOWL KITCHEN SINK
- DOMETIC DOUBLE DOOR 6 cu. ft. GAS/ELECTRIC REFRIGERATOR W/ STAINLESS FRONT
- 6 GAL. G/E DSI WATER HEATER
- DOMETIC PEDAL FLUSH TOILET
- SOLID SURFACE KITCHEN COUNTERTOPS
- DELUXE WOOD BOOTH TABLE TOP
- CATHEDRAL (BARRELED) CEILING
- HARD DOORS TO BEDROOMS FOR PRIVACY (NOT CURTAINS)
- DECORATIVE KITCHEN BACKSPLASH
- LARGE TRASH CAN W/ DESIGNATED OUT OF THE WAY AREA
- UPGRADED RESIDENTIAL STYLE CARPET
- FULL EXTENSION BALL BEARING DRAWER GUIDES
- STAINLESS STEEL KITCHEN PACKAGE
- POT & PAN DRAWERS UNDER DINETTE SEATS
- STAINLESS STEEL ROLL UP SINK COVER
- BLUETOOTH MP3/DVD/CD/FM W/ SURROUND SOUND
- TEDDY BEAR SERIES BUNK MATS

## OPTIONS

- ALUMINUM WHEELS
- SPARE TIRE
- 10.7 CU FT WHIRLPOOL RESIDENTIAL REFER W/ INVERTER
- OUTSIDE KITCHEN (BUMPER MOUNTED GRILL, FRIDGE, SINK W/DRAIN, METAL COUNTERTOP)
- SKYLIGHT OVER TUB/SHOWER
- JIFFY SOFA IPO LOWER BUNK (308BHS & 313BHS ONLY)
- 40" FLAT SCREEN TV
- OUTSIDE SHOWER
- 15K BTU DUCTED A/C IPO 13.5K
- 50 AMP SERVICE W/ WIRE & BRACE FOR 2ND A/C
- 2ND 13.5K A/C IN BEDROOM (REQUIRES 50 AMP)

## LIMITED SHOWSTOPPER FEATURES

- HIGH RISE FAUCET W/ PULL OUT SPRAYER
- BLACK TANK FLUSH
- SOLAR PANEL PREP
- POWER TONGUE JACK
- POWER STABILIZER JACKS
- COLORED LED AWNING LIGHT
- TOUCH SCREEN REMOTE
- RECESSED STOVE W/GLASS COVER
- DECORATIVE WINDOW TREATMENTS (LIVING ROOM ONLY)
- NIGHT SHADES (LIVING ROOM ONLY)

## SPECIFICATIONS

MODEL	268RKS	272BHS	285BHS	288RLS	308BHS	313BHS	323QBS
HITCH WEIGHT	906	681	TBA	753	786	948	1190
AXLE WEIGHT	5596	5919	TBA	6366	6510	7058	6565
UVW	6540	6638	TBA	7119	7334	8044	7793
CCC (CARGO CAP.)	1867	1867	TBA	1867	1867	1704	1867
EXTERIOR LENGTH	34' 6"	34' 8"	33' 10"	33' 9"	36' 9"	38' 1"	37' 11"
EXTERIOR HEIGHT	11'	11'	11'	11'	11'	11'	11'
FRESH WATER (gal.)	46	46	46	46	46	46	44
BLACK WATER (gal.)	30	30	30	30	30	30	30
GREY WATER (gal.)	60	62	62	70	60	72	32
AWNING SIZE	20'	18'	20'	2- 12'	18'	20'	18'
TIRE SIZE	15"	15"	15"	15"	15"	15"	15"



### PRE-DELIVERY INSPECTION FACILITY

20,000 square feet of quality assurance. The bare essentials for a premium product. This state-of-the-art facility gives immediate daily feedback to production for quality assurance in every unit built.

**GVWR (Gross Vehicle Weight Rating)** - is the maximum permissible weight of the unit when fully loaded. It includes all weights, inclusive of all fluids, cargo, optional equipment and accessories. For safety and product performance do NOT exceed the GVWR.

**GAWR (Gross Axle Weight Rating)** - is the maximum permissible weight, including cargo, fluids, optional equipment and accessories that can be safely supported by a combination of all axles.

**UVW (Unloaded Vehicle Weight)\*** - is the typical weight of the unit as manufactured at the factory. It includes all weight at the unit's axle(s) and tongue or pin and LP Gas. The UVW does not include cargo, fresh potable water, additional optional equipment or dealer installed accessories.

\*Estimated Average based on standard build optional equipment.

**CCC (Cargo Carrying Capacity)\*\*** - is the amount of weight available for fresh potable water, cargo, additional optional equipment and accessories. CCC is equal to GVWR minus UVW. Available CCC should accommodate fresh potable water (8.3 lbs per gallon). Before filling the fresh water tank, empty the black and gray tanks to provide for more cargo capacity.

\*\* Estimated average based on standard build optional equipment

Each Forest River RV is weighed at the manufacturing facility prior to shipping. A label identifying the unloaded vehicle weight of the actual unit and the cargo carrying capacity is applied to every Forest River RV prior to leaving our facilities.

The load capacity of your unit is designated by weight, not by volume, so you cannot necessarily use all available space when loading your unit.

All information contained in this brochure is believed to be accurate at the time of publication. However, during the model year, it may be necessary to make revisions and Forest River, Inc., reserves the right to make all such changes without notice, including prices, colors, materials, equipment and specifications as well as the addition of new models and the discontinuance of models shown in this brochure. Therefore, please consult with your Forest River dealer and confirm the existence of any materials, design or specifications that are material to your purchase decision.



**Forest River, Inc. encourages our customers to purchase their Forest River products from a local dealership whenever possible for the following reasons:**

- 1) Forest River, Inc. dealers are independently owned and operated businesses so priority service and scheduling is at their discretion and is often provided to customers that purchased their unit at that dealership.
- 2) Purchasing locally allows customers to establish meaningful relationships with a dealer, enhancing the RV experience through assistance with product questions, user tips or RV regulations for your state or country, and much more!
- 3) Canadian customers must meet requirements to bring an RV purchased out of the country to their home. These requirements may involve additional inspections and certifications, taxes and fees. Your local Canadian Dealer is a professional at meeting these requirements.
- 4) Scheduling timely warranty repairs and adjustments through a local dealership provides far greater flexibility and convenience to you, the customer!

It is the goal of Forest River, Inc. that all of our RV owners fully enjoy the RV experience and that customer satisfaction meets or exceeds their expectations!

**24/7 EMERGENCY ROADSIDE ASSISTANCE**

For a worry-free ownership experience Forest River includes one year of Coach-Net RV Technical & Roadside Assistance with each RV purchase. Whether new to the RV lifestyle or an experienced RV enthusiast, Forest River owners have 24/7 access to technical, operational and emergency road service coverage throughout the US & Canada. Coach-Net's fast, dependable service is just a phone call away.

**Coach-Net®**



**Learn More**  
Scan this barcode using a QR Reader on your smart phone to learn more about Forest River.



A Berkshire Hathaway company.

VIBE/Forest River Inc.  
411 CR 15  
Elkhart, IN 46516  
(574)-296-2084  
[www.forestriverinc.com](http://www.forestriverinc.com)  
[www.forestriveraccessories.com](http://www.forestriveraccessories.com)