

# FORESTER

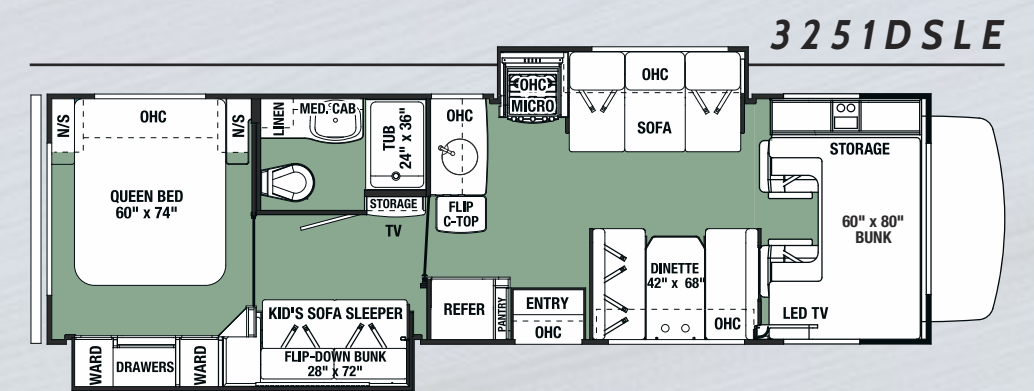
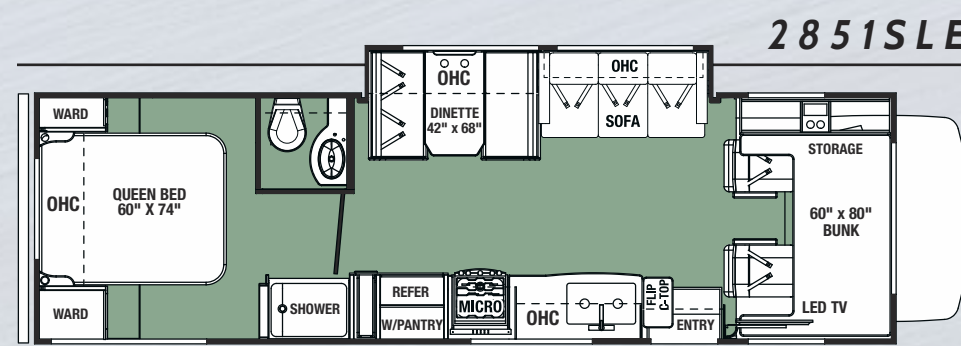
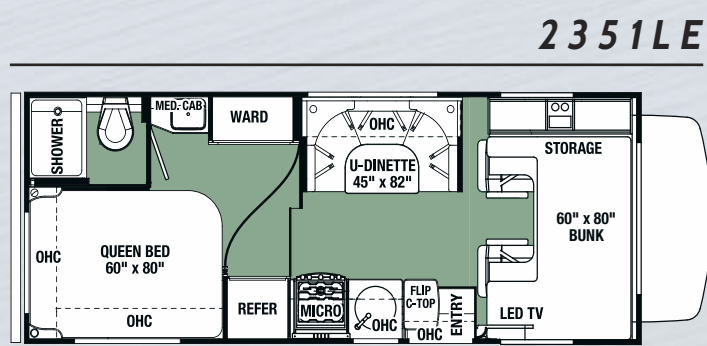
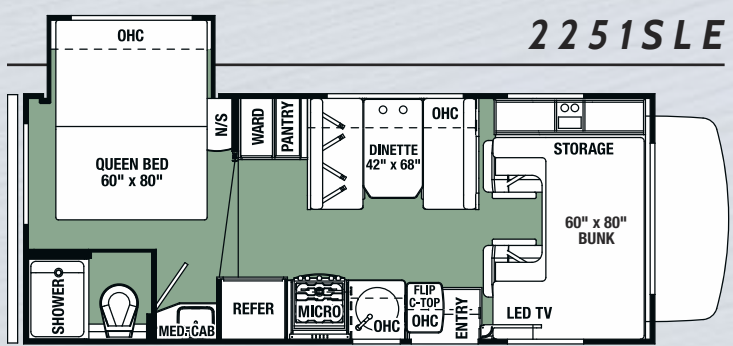
BY FOREST RIVER



Forester LE Series is the industry's best value on the market today! Enjoy years of carefree travel with these well-built Class Cs.



Shown in Chestnut Decor with optional Weathered Teak cabinetry



**USB CHARGING STATION**  
12V 4-port USB charging station (Living room/bedroom)



**SOLAR PREP**  
Easily charges the 12V system with aftermarket solar panels.



**ENCLOSED BATTERIES**  
One battery in a single housing for easy access.



**MEMORY FOAM**  
Memory foam mattress will ensure a good night's sleep.



**SEAMLESS FRONT CAP**  
For enhanced aerodynamics



**CAB OVER BUNK SAFETY NET**  
The overhead bunk is rated for 440 lbs.



**LARGE WINDOWS WITH BLACK-OUT ROLLER SHADES**  
Large panoramic windows for plenty of fresh air and natural light.



**LED LIGHTING**  
LED lights generate almost no heat compared to incandescent lights and use substantially less power.

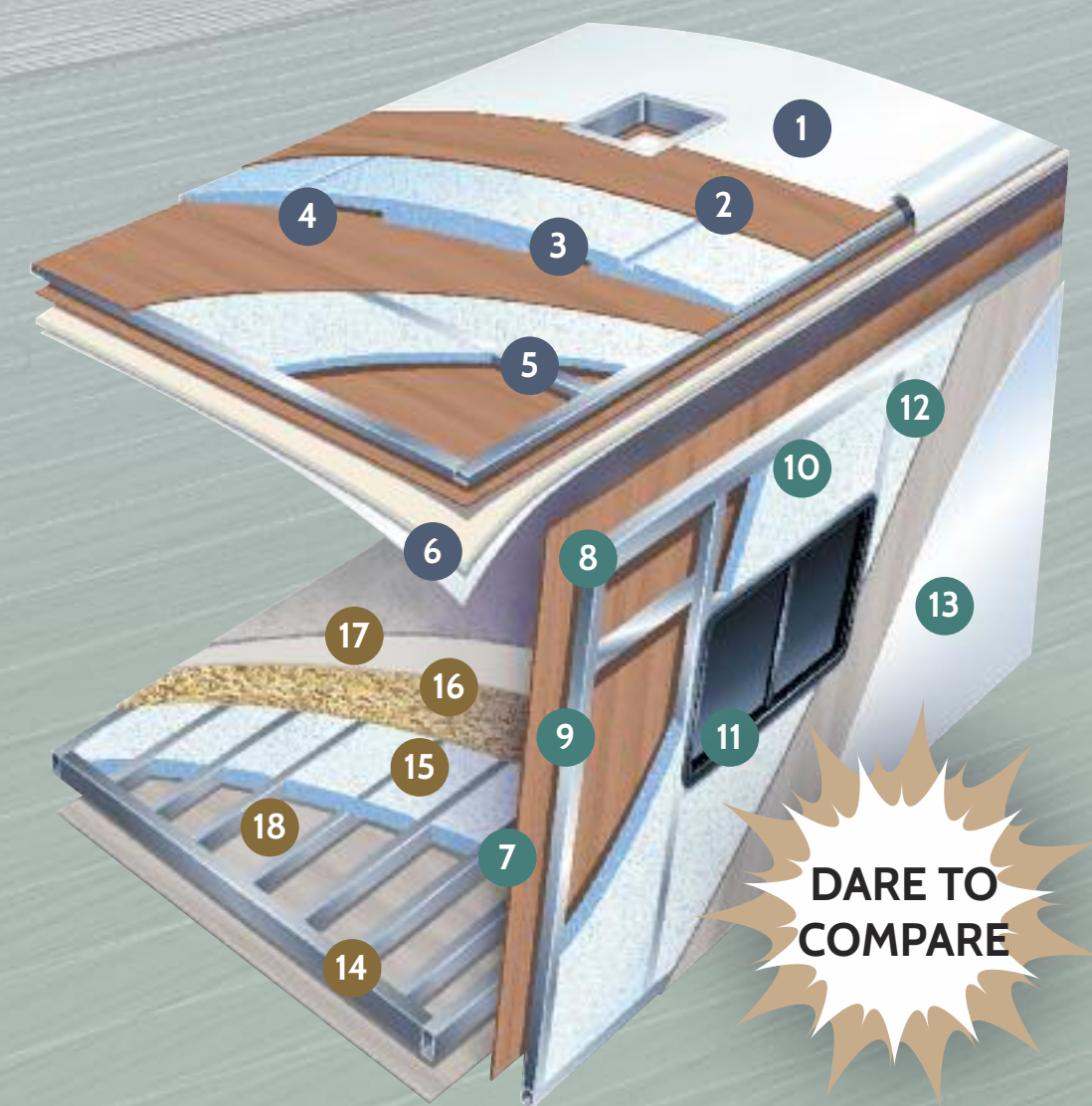


**HEATED AND ENCLOSED**  
Heated/enclosed utility station uses warm air from the furnace to protect tanks and valves. (N/A 2251 SLE)



**INTEGRATED STEP**  
Forester's entry step is integrated into the sidewall. No more slippery, or damaged power steps.

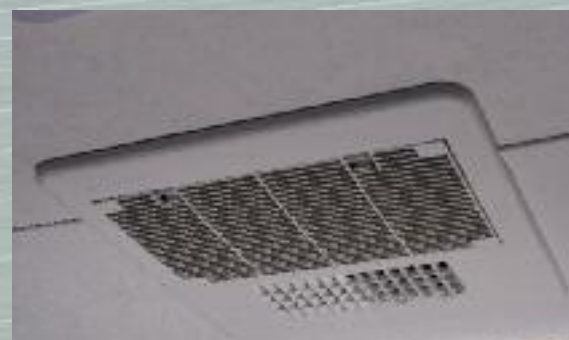
## HIGH QUALITY CONSTRUCTION



**DARE TO COMPARE**



**POWER AWNING WITH LED STRIP**  
Extend and retract your awning with the push of a button. Both arms are adjustable to get just the right angle.



**ATWOOD FULLY DUCTED AIR**  
All floorplans are ducted for quiet, lower voltage, high performance air flow throughout the coach and front cabover.



**RESIDENTIAL STYLE CABINETRY**  
Forester is appointed with ball bearing drawer glides and rich hardwood cabinetry. (Shown in Rustic Cherry)



**OUTSIDE SPEAKERS**  
For directional sound delivery to the campsite.



**WHOLE HOUSE ENTERTAINMENT**  
This multimedia system features AM/FM/DVD, Bluetooth, plus outside speaker control.



**7,500 LB. TOW CAPACITY**  
Ford E450 chassis only



**KING JACK ANTENNA**  
This HD digitally amplified antenna enhances reception.



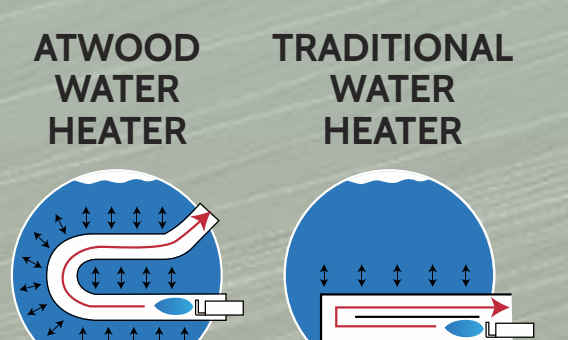
**FIBERGLASS ROOF**  
Durable, easy to clean (R-18) crowned fiberglass sheds water and doesn't cause black streaks like a rubber roof.



**LE SERIES KID'S SOFA SLEEPER WITH FLIP-DOWN BUNK**



**360 SIPHON VENT CAP**  
This holding tank vent cap eliminates odors and gases from the holding tanks and exhausts them out the roof, without the use of costly chemicals.



**ATWOOD WATER HEATER**  
Atwood 18 GPH water heaters (6 gallon tank) out performs traditional 10 and 12 gallon tank water heaters. They're also 50% lighter and have no anode rod to replace.



**CHARGE WIZARD**  
Progressive Dynamics patented 4-stage Charge Wizard® converter system can increase battery life by 2 to 3 times or more. It constantly monitors voltage and usage then selects one of four operating modes to properly charge and maintain the battery. Boost, Normal, Storage and Equalization.

### MULTI-LAYERED LAMINATED ROOF SYSTEM

1. Crowned Fiberglass Roof
2. Luan Decking
3. Block Foam Insulation
4. A/C Ducts
5. Tubular Aluminum Framing
6. Interior Sound Deadening Ceiling Panels

### VACUUM-BOND LAMINATED SIDEWALLS

7. Decorative Interior Wall Board
8. Tubular Aluminum Framing
9. EGS Metal Backers Increase Support for Interior Cabinetry
10. Block Foam Insulation
11. Opening Framed In Aluminum
12. Lightweight Composite - Waterproof Material
13. Gelcoat Fiberglass Exterior

### VACUUM-BOND LAMINATED FLOOR SYSTEM

14. Fiberglass Bottom Board
15. Block Foam Insulation
16. Seamless Floor Decking
17. Resilient Shaw Flooring Throughout Entire Coach
18. Aluminum Framing
19. Fiberglass Laminated Roof
20. Fiberglass Laminated Sidewalls
21. Fiberglass Laminated Floors



## PLUS THESE FEATURES

- ◆ BACK-UP CAMERA
- ◆ JACK KNIFE SOFA WITH FOOT REST
- ◆ 2 LARGE DINETTE STORAGE DRAWERS
- ◆ KID ZONE WITH SEAT BELTS, INCLUDES LED TV AND DVD PLAYER (3251 DSLE ONLY)
- ◆ CAB-OVER CURTAIN
- ◆ PASS THROUGH STORAGE
- ◆ DINETTE CHILD TETHERS
- ◆ CAB-OVER A/C VENT
- ◆ ENCLOSED DUMP STATION
- ◆ SPARE TIRE

For more information please visit: [www.forestriverinc.com/forester](http://www.forestriverinc.com/forester) ♦ 914 CR 1 ♦ Elkhart, IN 46514 ♦ 574.262.2212 ♦ 800.445.2825 ♦ [www.forestriveraccessories.com](http://www.forestriveraccessories.com)

All information contained in this brochure is believed to be accurate at the time of publication. However, during the model year, it may be necessary to make revisions and Forest River, Inc., reserves the right to make all such changes without notice, including prices, colors, materials, equipment and specifications as well as the addition of new models and the discontinuance of models shown in this brochure. Therefore, please consult with your Forest River dealer and confirm the existence of any materials, design or specifications that are material to your purchase decision.

©2017 Forester - a Division of Forest River, Inc. - a Berkshire Hathaway Company 12/17

