

*R*  
**RIVERSTONE**  
LEGACY



---

THE LIFESTYLE OF LUXURY

---

EXTENDED STAY LUXURY FIFTH WHEELS

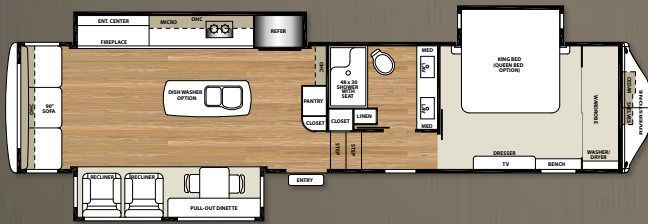






Riverstone Legacy Luxury Fifth Wheels, where expectations are fulfilled with superior appointments and unrivaled quality. Whether it's a weekend escape or an extended tour of bucket list sights, RiverStone Legacy will be your home on the road. Take a look and you will see why more people are choosing RiverStone Legacy as their luxury fifth wheel and enjoying the life they deserve.

## 38MB FLOORPLAN



The RiverStone Legacy 38MB is exquisitely finished and finely appointed. Designed to satisfy even the most discriminating buyer the RiverStone Legacy gives you the ultimate in residential comfort in an extended stay Recreational Vehicle.



Staying true to its extended stay roots RiverStone Legacy series bedrooms feature a large cedar lined mirrored wardrobe, three panel hardwood headboard with fabric panels, 43" LED TV\*, electric fireplace\* and hidden washer/dryer\*. (\*Pictured as item 16 on page 6)



1 20 cu. ft. French Door Refrigerator w/ Ice Maker



1

2 30" Convection Microwave  
3 Optional Fischer Paykal Dishwasher



2



3

4 Deluxe High Rise Faucet and Sprayer  
5 Hardwood Rounded Cabinet



4



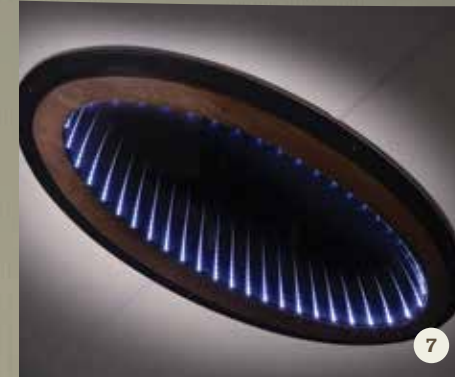
5

6 Sink Covers Matching Corian Solid Surface Countertops



6

7 Large Infinity Light Over Kitchen Island  
8 Pull out Pantry Storage w/Soft Close Drawer Guides



7



8



9



10



12



13



11



14

10 Dyson Cordless Vac  
11 USB and Standard Power Ports

12 Optional Oven and Gas Cooktop

13 Infinity Light Inset in Slide Fascia

14 Continuous Hot Water System w/ Controller

15 60" LED Smart TV with Bose Sound Bar, DVD Entertainment and Fireplace

16 Splendid "Astral" Stackable Washer and Dryer Alongside 43" LED Bedroom TV and Fireplace

17 Hardwood Valances w/ Etched Glass

19 Optional Solar Prep Package

21 Optional Back Up Camera

18 Fantastic Fan with Rain Sensor

20 Control Center w/ MyRV Touch Pad

22 12V Powered 50 AMP Cord Reel



15



16



17



20



21



23



24



18



19



22



25



26

23 Optional 39" Outside LED TV

24 Drop Frame Design Provides Maximum Basement Storage

25 Automotive State-of-the-art LED Tail Lights

26 Exterior LED Side Turn Signal Lights

DECOR OPTIONS

FULL BODY PAINT OPTIONS



EARTH



MERLOT



DUSK



CASHMERE

WOOD OPTIONS

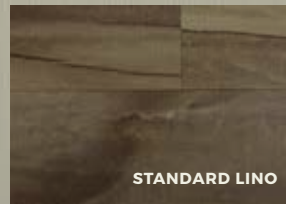


MOCHA



DANVILLE

FLOORING OPTIONS



STANDARD LINO



WOOD PLANK LINO OPTION



## STANDARDS - OPTIONS

### STANDARDS

#### INTERIOR PACKAGE

- 60" LED Smart TV w/Bose Sound Bar & DVD Entertainment
- Induction Instant Heat Cook Top
- Upgraded Corian Solid Surface Countertop in Kitchen and Bathroom
- Large Stainless Steel Kitchen Sinks with Residential Faucet
- 20 cu. ft. French Door Refrigerator w/ Ice Maker and 1,000 Watt Inverter
- LCI MyRV Digital Control Panel with Mobile App
- Residential Soft Close Drawer Guides
- Hardwood Cabinetry and Stiles Throughout
- Continuous Hot Water System
- Shaw Residential Laid Tile Floor (Ginger)
- 43" LED TV in Bedroom
- 30" Stainless Steel Convection Microwave
- Oval Porcelain Toilet w/ Foot Flush
- Dyson Cordless Vac System
- 40,000 BTU Furnace
- Water Manifold System
- Residential Soft Close Hinges on Cabinet Doors
- European Style Aluminum and Slat Bed Frame
- Power Management System w/ 3rd A/C Prep

- Fireplace/Heater in Bedroom

#### EXTERIOR PACKAGE

- Wool-glass, Residential Style Insulation, Featuring a Dual Vapor Barrier to Give you an Incredible R-16 Insulation Value in the Side Walls, Including the Slide Rooms.
- The Roof and Flooring Touts an R-38 Insulation Value. All Designed for Full Time Living Throughout the Country.
- Goodyear 17.5" H Tires with Aluminum Rims
- Hydraulic Slide Outs
- Automatic 6-Point Hydraulic Level Up System
- Electric A&E Awning with Metal Weather Shield and LED Lights
- Side Turning Lights
- Dexter EZ Flex Suspension System w/ Bronze Bushings and Grease Zerks
- 3" Exterior Walls with High Gloss Full Gel Coat Exterior
- Automotive LED Tail Lights
- Drop Frame Design Providing Maximum Basement Storage
- 32" x 78" Extra Large Entry Door
- Full Front and Rear Fiberglass Caps
- Dexter Disc Brakes
- 8000 lb. Dexter EZ Lube Axles
- Dual Pane Frameless Windows
- Full Docking Station
- (2) Dual 6V or 12V Slide-Out Battery Trays

- 12V Powered 50 Amp Power Cord Reel
- 1 ¼" Hitch Receiver for Bike Rack
- Waste Master Tank Emptying System
- 101.5" Wide Body Construction
- 12V Heated Tank Pads
- Fully Enclosed Underbelly
- ½" Plywood Roof Decking

- Zamp Solar Prep Package (Up To 480W)
- Zamp Solar Package Inc. 3 160W Solar Panels on Roof
- MORryde Independent Suspension System w/ Disc Brakes
- King Tailgater Roof Mount Satellite w/ 2 DISH Receivers

#### INTERIOR OPTIONS

- Splendid "Astral" Stackable Washer and Dryer
- 13 cu. ft. Side by Side Gas/Electric Refrigerator with Wood Fronts (Not Available in 34 SLE)
- Fischer Paykal Dishwasher
- Gas Cooktop IPO Induction Cook Top
- Residential Style Gas Oven IPO Cabinets
- 12 Gallon Gas/Electric Water Heater IPO Tankless
- Hand Laid Shaw Tile Floor (Wood Plank)
- Cadet Wall Heater in Bedroom (Not Available in 38FB2)

### OPTIONS

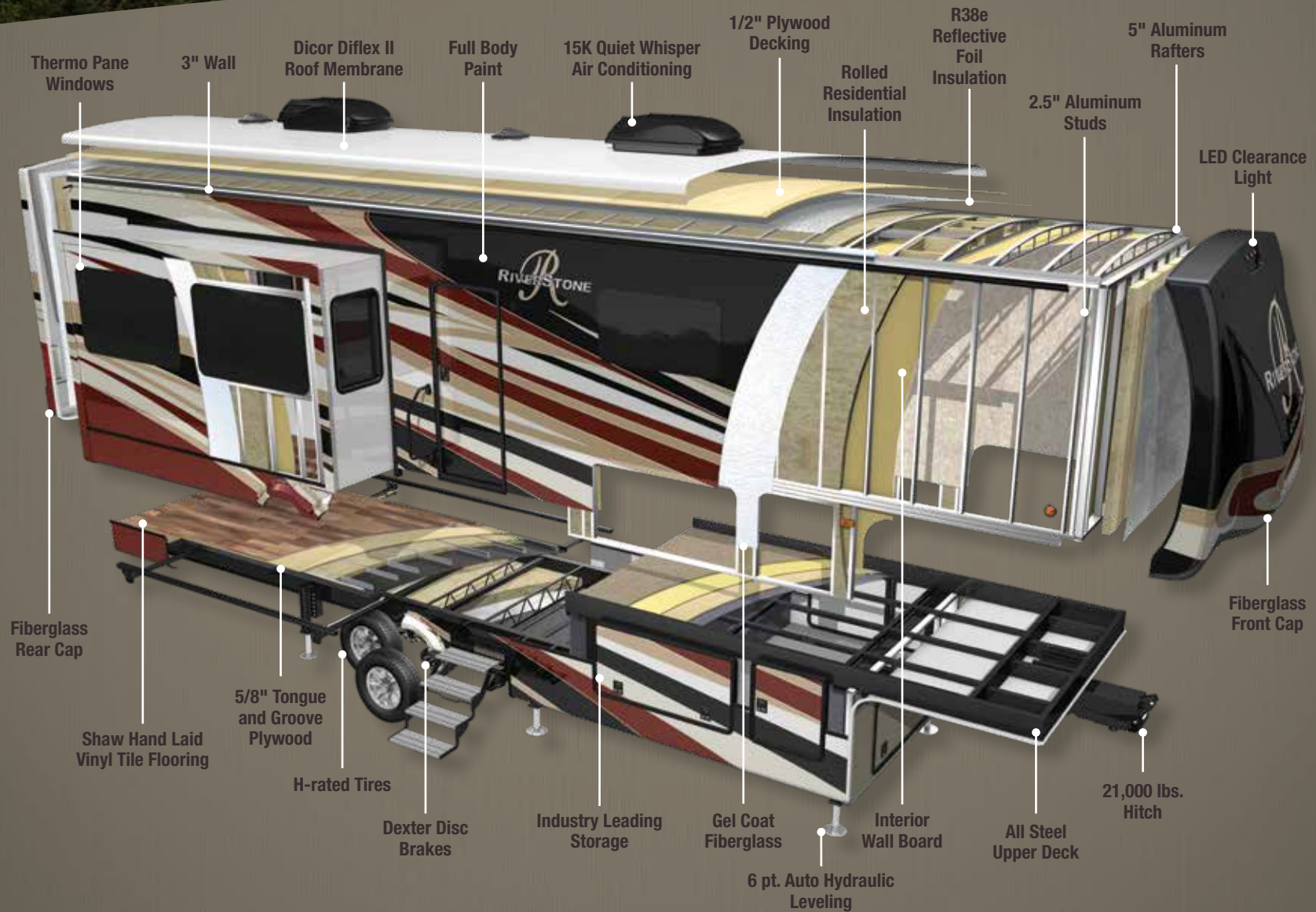
#### EXTERIOR OPTIONS

- 15,000 BTU High Performance Whisper Quiet Ducted 3rd Air Conditioner with Cold Air Returns
- Heat Pump on Main Air Conditioner
- LP Generator Prep Only
- 5.5 Onan Marquis Gold LP Generator w/ Gen Prep
- Trail Air 21K Hitch
- 12' Slide Room Black A&E Awning with Metal Weather Shield (Not Available on 38RE)
- Wireless Rear Camera System
- Slide Room Awning Toppers with Metal Weather Shields
- MORryde Folding Four Step Entry (Standard on 34SLE)
- 110V Mini-Fridge in Basement Storage Compartment
- 39" Outside TV

#### FURNITURE OPTIONS

- Power Theater Seating IPO Recliners
- Queen Bed Suite IPO King Bed Suite

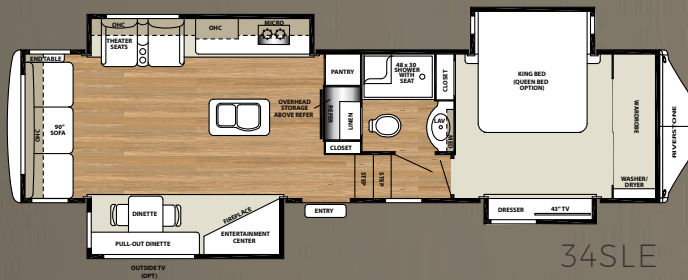
# CONSTRUCTION





**RIVERSTONE**  
LEGACY

# FLOORPLANS



## SPECIFICATIONS

MODEL	34SLE	38MB	38FB-2	38RE
GVWR	19108	19204	19075	19030
HITCH	3108	3204	3075	3030
UVW	14223	16249	16261	16781
CARGO	4885	2955	2814	2249
LENGTH*	36' 11"	40' 4"	40' 6"	41' 11"
HEIGHT	13' 4"	13' 4"	13' 4"	13' 4"
AWNING	18'	20'	20'	18'
FRESH	83 gal.	83 gal.	83 gal.	83 gal.
GRAY	82 gal.	82 gal.	82 gal.	82 gal.
BLACK	41 gal.	41 gal.	82 gal.	41 gal.

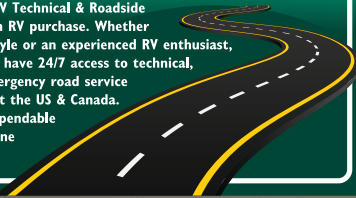
\*ADD 15" FOR TOTAL OVERALL LENGTH

## 24/7 EMERGENCY ROADSIDE ASSISTANCE

For a worry-free ownership experience Forest River includes one

**Coach-Net®**  
RV Technical & Roadside Assistance

year of Coach-Net RV Technical & Roadside Assistance with each RV purchase. Whether new to the RV lifestyle or an experienced RV enthusiast, Forest River owners have 24/7 access to technical, operational and emergency road service coverage throughout the US & Canada. Coach-Net's fast, dependable service is just a phone call away.



**FREE MEMBERSHIP**  
to Forest River Owners' Group

[www.forestriverfrog.com](http://www.forestriverfrog.com)



## CUSTOMER SATISFACTION



[www.ForestRiverBuyLocal.com](http://www.ForestRiverBuyLocal.com)



## PRE-DELIVERY INSPECTION FACILITY

20,000 square feet of quality assurance. The bare essentials for a premium product. This state-of-the-art facility gives immediate daily feedback to production for quality assurance in every unit built.

GVWR (Gross Vehicle Weight Rating) - is the maximum permissible weight of the unit when fully loaded. It includes all weights, inclusive of all fluids, cargo, optional equipment and accessories. For safety and product performance do NOT exceed the GVWR.

GAWR (Gross Axle Weight Rating) - is the maximum permissible weight, including cargo, fluids, optional equipment and accessories that can be safely supported by a combination of all axles.

UVW (Unloaded Vehicle Weight)\* - is the typical weight of the unit as manufactured at the factory. It includes all weight at the unit's axle(s) and tongue or pin and LP Gas. The UVW does not include cargo, fresh potable water, additional optional equipment or dealer installed accessories.

\*Estimated Average based on standard build optional equipment.

CCC (Cargo Carrying Capacity)\*\* - is the amount of weight available for fresh potable water, cargo, additional optional equipment and accessories. CCC is equal to GVWR minus UVW. Available CCC should accommodate fresh potable water (8.3 lbs per gallon). Before filling the fresh water tank, empty the black and gray tanks to provide for more cargo capacity.

\*\* Estimated average based on standard build optional equipment

Each Forest River RV is weighed at the manufacturing facility prior to shipping. A label identifying the unloaded vehicle weight of the actual unit and the cargo carrying capacity is applied to every Forest River RV prior to leaving our facilities.

The load capacity of your unit is designated by weight, not by volume, so you cannot necessarily use all available space when loading your unit.

All information contained in this brochure is believed to be accurate at the time of publication. However, during the model year, it may be necessary to make revisions and Forest River, Inc., reserves the right to make all such changes without notice, including prices, colors, materials, equipment and specifications as well as the addition of new models and the discontinuance of models shown in this brochure. Therefore, please consult with your Forest River dealer and confirm the existence of any materials, design or specifications that are material to your purchase decision.

**RIVERSTONE**  
LEGACY



### Learn More

Scan this barcode using a QR Reader on your smart phone to learn more about Forest River.



A Berkshire Hathaway company.

Forest River, Inc.  
55470 C.R. 1, Elkhart, IN 46515  
(574) 389-4600  
[www.forestriverinc.com/Riverstone](http://www.forestriverinc.com/Riverstone)  
[www.forestriveraccessories.com](http://www.forestriveraccessories.com)

YOUR LOCAL RIVERSTONE DEALER