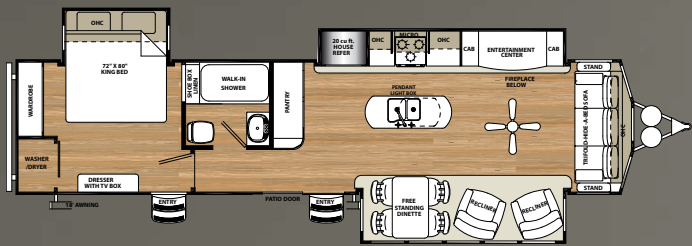


SIERRA

LUXURY DESTINATION TRAILERS







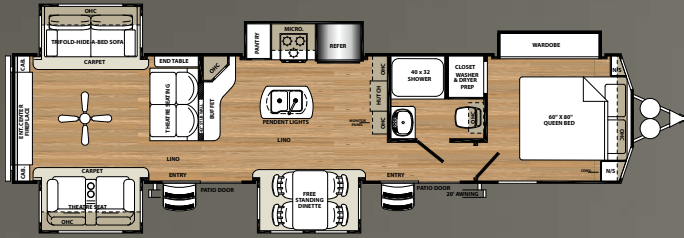
INNOVATIVE.

The 401FLX is filled with big beautiful windows to have the natural sunlight pour inside showing off all the wonderful amenities. The main focal point on this floorplan is the beautifully crafted entertainment center that boasts a 40" flatscreen TV standard. Directly across from the entertainment center and fireplace are two swivel rocker recliners or optional heated/massage theater seats.

401FLX

VINO INTERIOR





ONE OF A KIND.

The 403 RD is a lake side paradise. This floorplan offers two separate sliding glass patio doors to invite mother nature inside. Sunshine will be filling your unit with an abundant of natural light. The rear den entertainment allows ample space for entertaining. Two hide-a-beds and theatre seating with massage and heat offer plenty of sitting space. The kitchen is equipped with an island, a full pantry and buffet style solid surface countertops. Along with a full walk in shower this unit offers a wardrobe slide for hanging clothes. This unit is also prepped to add a separate washer and dryer unit for those long stays. The 403 RD is truly one of a kind.

403RD

DUSK INTERIOR





INTERIOR FEATURES



STAINLESS STEEL APPLIANCE PACKAGE.



THE UPGRADED AND INTRICATELY DETAILED SLIDE-OUT FASCIA.



THEATER SEATS WITH LED LIGHTING, HEAT AND MASSAGE AND CONSOLE STORAGE.



FULL EXTENSION, SOFT CLOSE BALL BEARING DRAWER GUIDES.



THE ELECTRIC FIREPLACE WARMS AND IS A GREAT FOCAL POINT FOR THE LIVING AREA.



CONTEMPORARY MASTER BEDROOM HEADBOARD WITH INTEGRATED LED LIGHTING



ENJOY THE COMFORT OF HOME WITH OUR EXCLUSIVE DENVER MATTRESS.



FLATSCREEN LED HDTV WITH PREMIUM SOUNDBAR AND DVD PLAYER.



THE TRI-FOLD HIDE-A-BED SOFA OFFERS YOU AND YOUR GUESTS MORE SLEEPING OPTIONS



MOCHA ACCENTED CROWN MOLDING GIVES THE SIERRA KITCHEN A TRULY RESIDENTIAL FINISH



CONTEMPORARY CEILING FAN.



PORCELAIN FOOT FLUSH TOILET, EASY TO USE, EASY TO CLEAN.

EXTERIOR FEATURES



SIERRA'S CONTROL PANEL ALLOWS YOU TO MONITOR TANKS AND OTHER SYSTEMS QUICKLY AND EASILY.



GEL COATED FIBERGLASS PROTECTS FROM UV RAYS AND PREVENTS YELLOWING AND CRACKING.



60" PATIO DOOR WITH TINTED GLASS AND VERTICAL BLINDS.



16" E RATED RADIAL TIRES.



DEXTER AUTO ADJUSTING BRAKES.



THE RADIUS ROOF LINE OF THE SIERRA DESTINATION SERIES ALLOWS FOR A 94" INTERIOR HEIGHT.



TRIPLE ENTRY STEPS.



FULLY ENCLOSED UNDERBELLY PROTECTS YOUR COACH. IMPROVED AIRFLOW ALLOWS FOR A STURDY RIDE.



DRIP RAIL WITH EXTRA LONG DRIP SPOUTS HELP PREVENT BLACK STREAKING



CONTROL THE TEMPERATURE WITH THE DUAL ZONE DOMETIC® THERMOSTAT.



ABS TANK COVER WITH 2-30 LB. LP TANKS.



OPTIONAL EXTERIOR KITCHEN AVAILABLE ON THE 404QBWD AND 402QB.

SIERRA CONSTRUCTION

THE SIERRA SUPERSTRUCTURE

The SIERRA has a Welded Aluminum Superstructure that is regarded as the Industry's finest, pictured below is the heavier gauge aluminum tubing used by SIERRA vs. the competitions lighter gauge aluminum.



- A ROLLED ALUMINUM SIDED SKIRTING
- B SAFETY GLASS TINTED WINDOWS (80%)
- C DUAL ZONE DUCTED 15K BTU AIR CONDITIONING
- D DEXTER AXLES WITH AUTO ADJUST BRAKES
- E LAMINATED VACUUM BONDED ALUMINUM SIDEWALLS
- F E RATED RADIAL TIRES
- G TRIPLE ENTRY STEP
- H COLOR MATCHED SEAMLESS RUBBER ROOF (12 YR. WARRANTY)

- I 2" BLOCK FOAM INSULATION
- J STAIN RESISTANT CARPET W/ PADDING
- K 3/8" ROOF DECKING (FULL WALK-ON ROOF)
- L 5/8" TONGUE AND GROOVE PLYWOOD FLOORING
- M ENCLOSED HEATED UNDERBELLY
- N I-BEAM POWDER-COATED FRAME W/ RUST INHIBITOR
- O 60" PATIO DOOR WITH TINTED GLASS AND VERTICAL BLINDS
- P POWER FRONT JACKS WITH QUICK RELEASE SNAP PINS (HYDRAULIC JACKS OPTIONAL)
- Q SLEEK RADIUS ROOF
- R COLOR MATCH HIGH GLOSS GEL-COATED COLORED FIBERGLASS EXTERIOR
- S TWO (2) 30 LB. LP TANKS



EXTERIOR FEATURES

- High gloss gel coated color matched exterior fiberglass
- Enclosed and heated dump valves
- Large tinted windows with 80/20 UV prohibitor
- Dexter auto adjust brakes
- Radius triple steps with 9" riser (no pinched fingers)
- Dometic™ "One-Touch" electric awning with adjustable arms, and integrated LED light
- 16" Radial tires-E Rated
- Automotive-style fender skirts
- Hitch light
- Porch light with interior switch
- 30 lb. double LP tanks with auto change over
- 2 exterior speakers
- Rain gutters with extra long drip spouts (prevents black streaking)
- Exterior folding grab handle
- 60" Patio door

INTERIOR FEATURES

- 94" interior height with 6'4" slide heights
- Radius "barreled" ceiling
- Residential stain resistant carpet
- Rustic Plank pattern Beauflor® linoleum
- Swivel glider recliners
- Three color coordinated interiors (Dusk, Vino, Fawn)
- Full extension ball bearing drawer glides
- Stainless steel under mounted kitchen sink
- Washer/dryer prep (select floorplans)

- Handmade cabinetry with screwed lumber core stile construction
- Residential countertops
- Dual zone A/C prep (living room and bedroom)
- Recessed residential LED lighting throughout
- Colored shower surround with etched tile pattern
- Upgraded adjustable shower head with shelf
- Accent paneling in slideouts
- Accent lighting over dinette
- Walk-in shower (select models)
- Crown molding over kitchen cabinets
- Extra large picture windows throughout
- Vented side windows in slideouts
- TV antenna with booster
- Solid wood drawer fronts with birch sides
- Upgraded raised panel cabinet doors with designer rails
- Bedroom slideout fascia
- Serta® memory foam mattress
- 20 cu. ft. stainless steel refrigerator
- Stainless steel kitchen package
- 40" LED HDTV with premium soundbar
- Designer window treatment accented per decor
- Ceiling fan
- Hide-a-bed sofa with tri-fold
- Residential carpeting
- Center mounted A/C unit for even cooling
- Quilted bedspread
- Home decor package
- Trash receptacle in kitchen

APPLIANCES/SYSTEMS

- Ducted Dometic® 15K A/C
- Dual zone thermostat for living room and bedroom A/C
- Floor ducted 35,000 BTU furnace
- Three burner High output range with Furrion oven
- 20 cu. ft. stainless steel refrigerator
- Interior monitor panel for holding tanks
- Interior thermostat for heating and cooling
- Flush floor hydraulic slideouts (per floorplan)
- Satellite and cable hookup with RG-6 cable for high quality picture
- Porcelain foot flush toilets
- Full coach water filtration system
- 10 Gal. DSI water heater
- 65 Amp converter
- Water filter system
- Fantastic fan in bath

CONSTRUCTION

- Welded aluminum-framed, vacuum bonded laminated superstructure
- 2" x 3" floor joists 12" on center
- 5/8" tongue & groove plywood floor decking
- 3/8" roof decking (full walk-on roof)
- Cambered powder coated frame with rust prohibitor
- Fully enclosed underbelly
- 5" truss roof rafters
- R-10 sidewall construction

SIERRA DECORS, STANDARDS & OPTIONS

POPULAR OPTIONS

- Solid surface countertops in kitchen
- Free-standing dinette with 4 chairs
- Washer and dryer (per floorplan)
- Sofa IPO bottom bunk (per floorplan)
- Second air conditioner-bedroom
- Fantastic fan with power hood operated with wall switch
- 12 Volt heated holding tanks
- R-38e Insulation package
- Tile pattern Beauflor® linoleum
- Central vacuum
- Bedroom ceiling fan
- Roof ladder

FOR YOUR SAFETY

- Smoke alarm
- Fire extinguisher
- Breakaway switch (battery hook-up required)
- Dead-bolt lock on entry door
- Liquid propane (LP) gas detector
- Fire escape windows

POLAR TECH PACKAGE (OPTIONAL)

- Thermal pane windows
- Heated holding tanks
- R-38e roof & all floors insulation
- 40K BTU furnace

SIERRA SIGNATURE PACKAGE

- Residential stain resistant carpet
- Denver mattress
- Radius 94" cathedral ceilings
- "One Touch" Dometic® electric awning w/LED lights
- Stainless steel kitchen package
- 15K BTU air conditioner
- King bed standard
- Ceiling fan in living room
- Décor package
- 50 amp service
- High gloss gel coated fiberglass color matched exterior
- 10 gal. G/E water heater w/DSI
- Residential pullout kitchen faucet
- 20 cu. ft. stainless steel refrigerator
- Tinted patio door
- 40" LED HDTV with Sony DVD and premium soundbar
- Washer/dryer prep (where available)
- Fantastic fan in bathroom
- Tri-fold hide-a-bed
- Wood plank pattern Beauflor® linoleum

DUSK
INTERIOR

VINO
INTERIOR

FAWN
INTERIOR

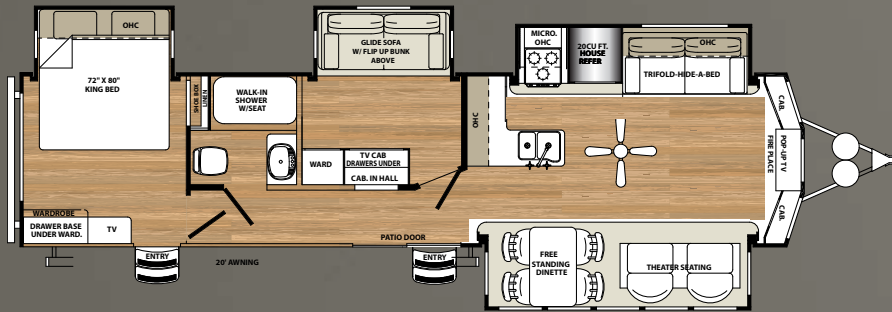
SIERRA

FLOORPLANS

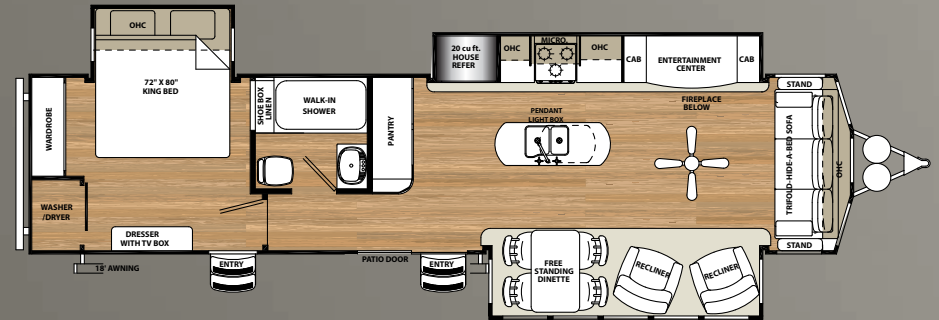
EXTERIOR KITCHEN

The Sierra exterior kitchen includes hot and cold running water and refrigerator.

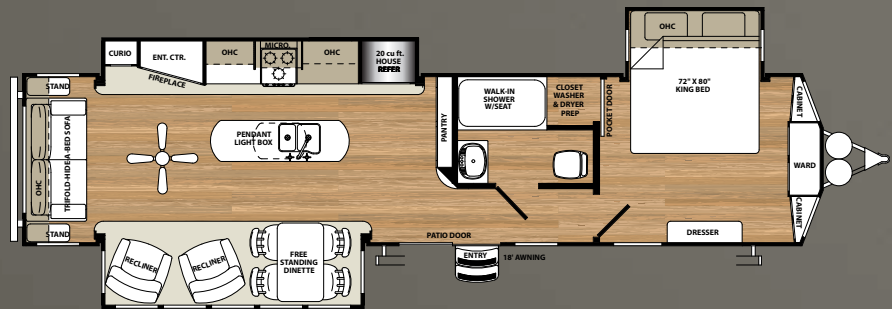
OPTIONAL ON THESE MODELS:
402QB, 404QBWD



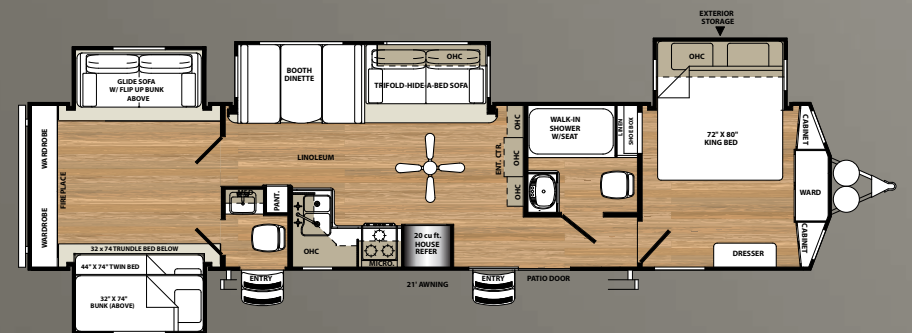
385FKBH



401FLX



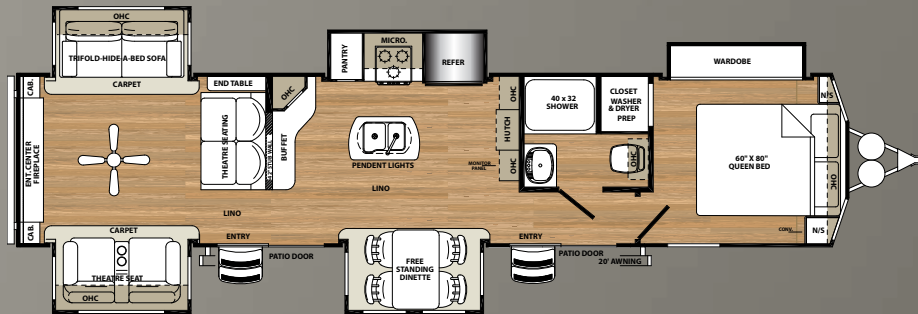
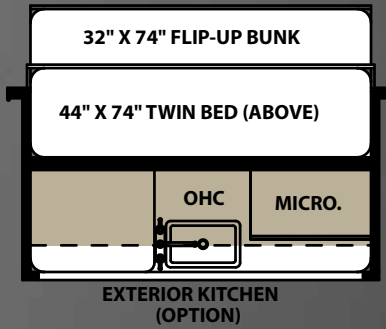
393RL



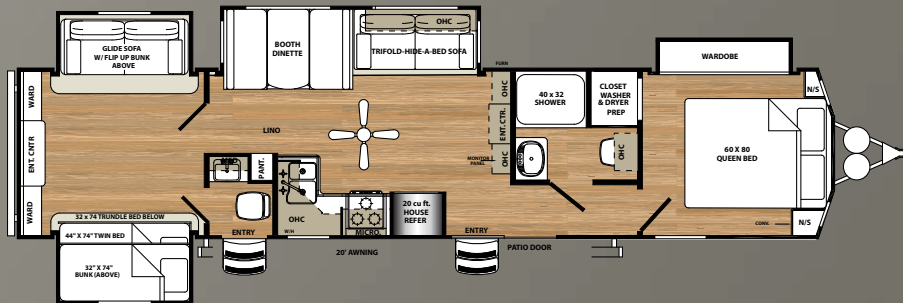
*OPTIONAL EXTERIOR KITCHEN AVAILABLE

402QB

***EXTERIOR KITCHEN**



403RD



*OPTIONAL EXTERIOR KITCHEN AVAILABLE

404QBWD



SPECIFICATIONS

MODEL	385FKBH	393RL	401FLX	402QB	403RD	404QBWD
HITCH	1,615	1,379	1,841	1,180	1,268	1,335
UVW	11,049	10,726	10,771	11,289	11,009	10,967
GVWR	13,615	13,379	13,841	13,180	13,268	13,335
CARGO	2,566	2,653	3,011	1,891	2,259	2,368
LENGTH	40'2"	41'4"	40'7"	42'2"	42'3"	42'2"
HEIGHT	12'7"	12'7"	12'7"	12'7"	12'7"	12'7"
AWNING	20'	19'	17'	20'	20'	20'
GRAY	104	104	156	104	104	104
BLACK	52	52	52	104	52	104
FRESH	60	60	60	60	60	60

Please see back cover for more information regarding weights.

24/7 EMERGENCY ROADSIDE ASSISTANCE

For a worry-free ownership experience

Coach-Net[®]

RV Technical & Roadside Assistance

Forest River includes one year of Coach-Net RV Technical & Roadside Assistance with each RV purchase. Whether new to the RV lifestyle or an experienced RV enthusiast, Forest River owners have 24/7 access to technical, operational and emergency road service coverage throughout the US & Canada. Coach-Net's fast, dependable service is just a phone call away.



FREE MEMBERSHIP

to Forest River Owners' Group

www.forestriverfrog.com



PRE-DELIVERY INSPECTION FACILITY

20,000 square feet of quality assurance. The bare essentials for a premium product. This state-of-the-art facility gives immediate daily feedback to production for quality assurance in every unit built.

CUSTOMER SATISFACTION



www.ForestRiverBuyLocal.com

GVWR (GROSS VEHICLE WEIGHT RATING) - IS THE MAXIMUM PERMISSIBLE WEIGHT OF THE UNIT WHEN FULLY LOADED. IT INCLUDES ALL WEIGHTS, INCLUSIVE OF ALL FLUIDS, CARGO, OPTIONAL EQUIPMENT AND ACCESSORIES. FOR SAFETY AND PRODUCT PERFORMANCE DO NOT EXCEED THE GVWR.

GAWR (GROSS AXLE WEIGHT RATING) - IS THE MAXIMUM PERMISSIBLE WEIGHT, INCLUDING CARGO, FLUIDS, OPTIONAL EQUIPMENT AND ACCESSORIES THAT CAN BE SAFELY SUPPORTED BY A COMBINATION OF ALL AXLES.

UVW (UNLOADED VEHICLE WEIGHT)* - IS THE TYPICAL WEIGHT OF THE UNIT AS MANUFACTURED AT THE FACTORY. IT INCLUDES ALL WEIGHT AT THE UNIT'S AXLE(S) AND TONGUE OR PIN AND LP GAS. THE UVW DOES NOT INCLUDE CARGO, FRESH POTABLE WATER, ADDITIONAL OPTIONAL EQUIPMENT OR DEALER INSTALLED ACCESSORIES.

*ESTIMATED AVERAGE BASED ON STANDARD BUILD OPTIONAL EQUIPMENT.

CCC (CARGO CARRYING CAPACITY)** - IS THE AMOUNT OF WEIGHT AVAILABLE FOR FRESH POTABLE WATER, CARGO, ADDITIONAL OPTIONAL EQUIPMENT AND ACCESSORIES. CCC IS EQUAL TO GVWR MINUS UVW. AVAILABLE CCC SHOULD ACCOMMODATE FRESH POTABLE WATER (8.3 LBS PER GALLON). BEFORE FILLING THE FRESH WATER TANK, EMPTY THE BLACK AND GRAY TANKS TO PROVIDE FOR MORE CARGO CAPACITY.

** ESTIMATED AVERAGE BASED ON STANDARD BUILD OPTIONAL EQUIPMENT

EACH FOREST RIVER RV IS WEIGHED AT THE MANUFACTURING FACILITY PRIOR TO SHIPPING. A LABEL IDENTIFYING THE UNLOADED VEHICLE WEIGHT OF THE ACTUAL UNIT AND THE CARGO CARRYING CAPACITY IS APPLIED TO EVERY FOREST RIVER RV PRIOR TO LEAVING OUR FACILITIES.

THE LOAD CAPACITY OF YOUR UNIT IS DESIGNATED BY WEIGHT, NOT BY VOLUME, SO YOU CANNOT NECESSARILY USE ALL AVAILABLE SPACE WHEN LOADING YOUR UNIT.

ALL INFORMATION CONTAINED IN THIS BROCHURE IS BELIEVED TO BE ACCURATE AT THE TIME OF PUBLICATION. HOWEVER, DURING THE MODEL YEAR, IT MAY BE NECESSARY TO MAKE REVISIONS AND FOREST RIVER, INC., RESERVES THE RIGHT TO MAKE ALL SUCH CHANGES WITHOUT NOTICE, INCLUDING PRICES, COLORS, MATERIALS, EQUIPMENT AND SPECIFICATIONS AS WELL AS THE ADDITION OF NEW MODELS AND THE DISCONTINUANCE OF MODELS SHOWN IN THIS BROCHURE. THEREFORE, PLEASE CONSULT WITH YOUR FOREST RIVER DEALER AND CONFIRM THE EXISTENCE OF ANY MATERIALS, DESIGN OR SPECIFICATIONS THAT ARE MATERIAL TO YOUR PURCHASE DECISION.



SIERRA

YOUR LOCAL SIERRA DEALER



Learn More

Scan this barcode using a QR Reader on your smart phone to learn more about Forest River.



A Berkshire Hathaway company.

Forest River, Inc.
2012 Century Dr.
Goshen, IN 46528
(574) 389-4600
www.forestriverinc.com/Sierra
www.forestriveraccessories.com



© 2018- Sierra - a division of Forest River Inc.,
A Berkshire Hathaway company