

XLR

TOY HAULERS



THUNDERBOLT



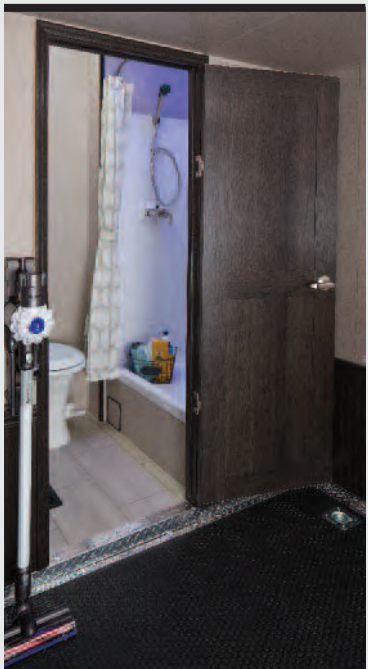


413AMP Gather around for good times! This open, inviting living space features a large LED TV, contemporary stainless steel fireplace and Sony touch-screen Bluetooth stereo. Durable tile patterned Beauflor® flooring compliments the bold rich Shaker style cabinetry. The main entry door window increases natural light and improves security. Thunderbolt features modern ceiling pendant lights, a residential microwave, a recessed stove top with a high output front burner and a 22" oven, a large 12 cu. ft. 4-door gas/electric RV refrigerator, plus European styled power recliners with built-in USB chargers – all standard! Solid wood treaded steps to the second level add safety. For added convenience, the optional "One Control" multiplex system controls lights, awning, temperature, generator, slide outs, the leveling system and much more, with the touch of a screen or smart phone. An 18 cu. ft. stainless steel 110V residential refrigerator is also available as an option.



Rest easy so you can get up and go! This well appointed XLR king bedroom has a slide out wardrobe, overhead storage, night stands and a convenient USB charger.

The 413AMP features a second full bathroom in the garage.



BOLD, LUXURIOUS AND LOADED FOR TRUE MULTI-PURPOSE LIVING!

Choose your destination, load up your friends, all your gear and hit the road! Head turning Thunderbolt fifth wheels are the best toy haulers on the market today. Outstanding details include rich, Espresso cabinetry and wainscoting, contemporary fluted glass cabinet doors, plus LG solid surface countertops and recessed stove tops. Garage "flex-rooms" and outdoor patio configurations maximize versatility and extend living space. Solid main entry steps enhance safety. Thunderbolt toy haulers are designed to fit today's most popular side-by-sides, four wheelers, motorcycles, grills, kayaks and bicycles.



This spacious contemporary bathroom features a 40" shower with convenient seat, skylight and a glass door.

See XLR videos and virtual tours at www.forestriverinc.com/XLR



Raise and lower the lightweight MORyde Zero G ramp door with just one finger! Dual automotive latches and electric key lock for easy access with zero gravity resistance. (413AMP also shown with VIP deck and sidesteps)





422AMP Kick back and relax! This side deck floorplan has it all! Cozy up to the modern, electric fireplace with glass rocks and an energy efficient infrared heating system. Enjoy movies or your favorite sporting event on the large LED TV, with a sound system that puts you in the middle of the action. This plush, four seat, wall-hugging recliner sofa has integrated lumbar support, built-in USB chargers and is the most comfortable seating in the industry. The 422AMP features a large built-in pantry and galley drawers so you can stock up for a long adventure and cook up a storm!

XLR TOY HAULERS THUNDERBOLT



Thunderbolts are renown for modern design and ergonomic floorplans. This well-planned kitchen has plenty of storage and prep space, plus stainless steel, deep bowl sinks with a contemporary faucet. Grey subway tiles accent the cooking area. The second bath can be accessed from the living area, or garage "Flex-room".

The 422 AMP features a side patio deck with an electric fireplace, an LED TV and two entry doors (one to the garage, and the second to the living space). The off door side entrance provides convenient access to the fuel station and your toys.



THUNDERBOLT STANDARDS & OPTIONS



Roto Flex pin box



Solar Kit



Glass cabinet doors with hidden hinges



MaxxAir Power roof vent in bathroom

All American Super Suspension (Optional)

INDEPENDENT SUSPENSION SYSTEM

Bulls-Eye alignment cams capable activation hanger system eliminates vibration damage.

Joy Rider Gas Charged Shocks control spring compression and rebound while restraining sway.

Liberty Rider's new slipper spring suspension system configures the axles for independent operation.



Black out roller shades



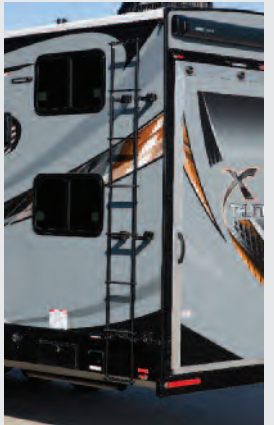
Beavertail storage bin



Hidden hinge cabinet doors



Girard tankless water heater



Collapsible ladder stores flat and is ready when you need it. The NEW Zero Gravity rear door has a hidden hinge system for a clean look



Deep bowl sink with pull-out faucet and solid surface countertop



Pantry storage (Varies by model)



Standard convenience center keeps all your utilities in one place



110V Residential refrigerator with ice maker (Optional)



Tankless water heater control (Optional)



Hid-N-Screen



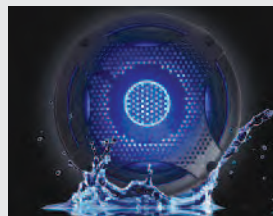
Keyed Alike – single key lock system



Optional free standing table and chairs and a two recliner power sofa with LED lighting



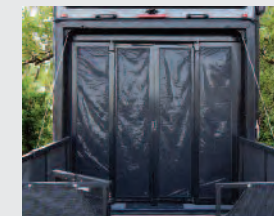
Star Energy high efficiency air conditioner system



Neo-blue exterior marine grade speakers



One Control Multiplex System, Alexa voice activation compatible (Optional)



Three-season patio door provides easy in and out access to the rear VIP deck. Removable panels over the screen doors keep dust and sand out (Optional)



Washer/dryer prep



Tinted safety glass windows



Optional keyless entry



Optional JBL premium sound system



Power sofa with built-in USB charger



Heavy-duty 5,000 lb. steel reinforced tie-down system secures cargo



Garage entertainment center and TV



Convenient pop-up charging station



Touch screen stereo



Main entries are equipped with quad Solid Steps. Garage entry doors are equipped with Tread Lite aluminum triple steps

PACK FOR A PARTY!

Extend your comfort zone with the standard electric awning. This optional VIP Patio deck features a stow away rail system, with easy to use attachment clips, and packs away easily when it's time to head out. Shown with these additional options: a three-season patio door that swings out over the ramp, and access steps to make loading and unloading a breeze. (422AMP shown)



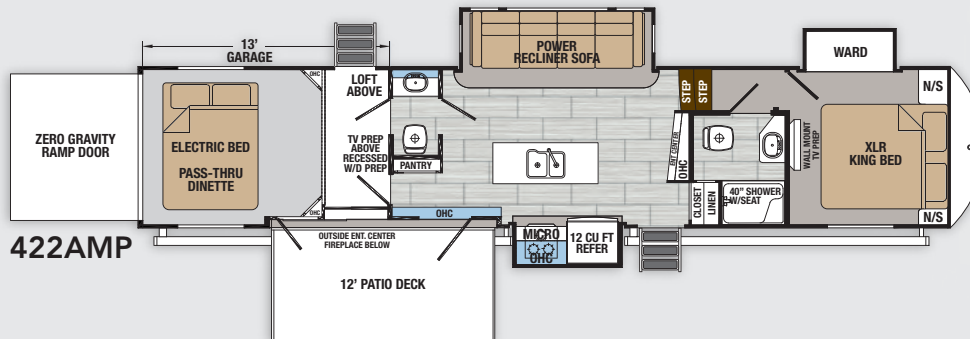
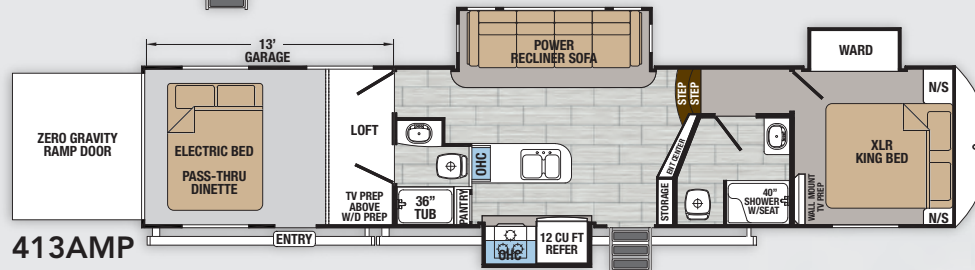
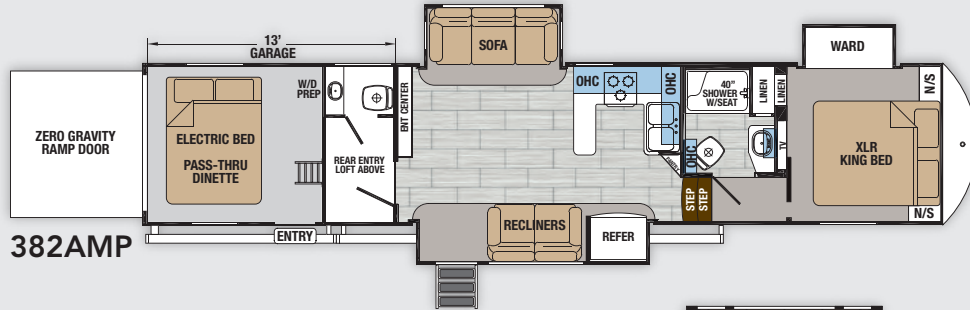
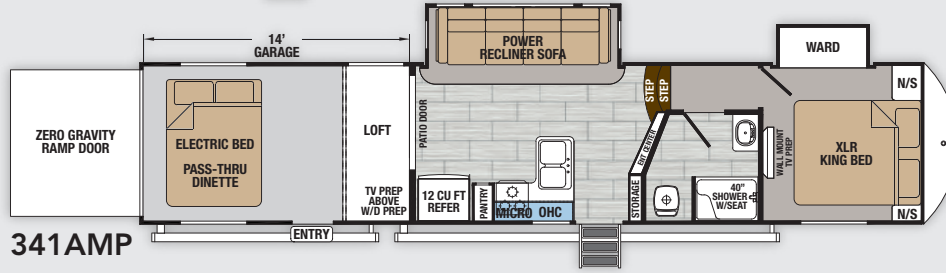
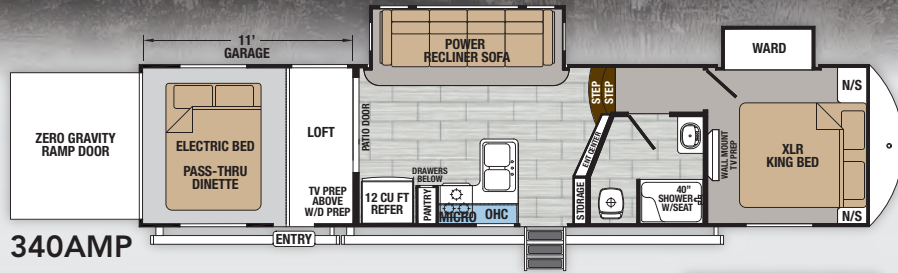
MORryde Zero G Ramp Door and VIP Deck with Electric Awning



See XLR videos and virtual tours at www.forestriverinc.com/XLR



THUNDERBOLT



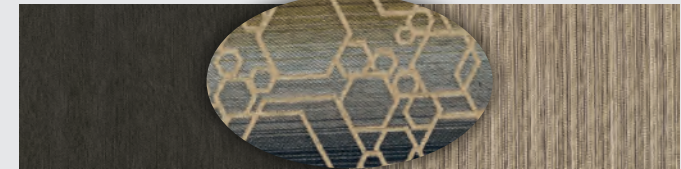
GUNMETAL



LINEN



MICA



382AMP



STANDARDS & OPTIONS

INTERIOR DECOR

- Linen
- Mica
- Gunmetal

EXTERIOR STANDARDS

- Aluminum Framed Laminated Sidewalls,
- Framed Windows
- 102" Wide Body Construction
- Powder Coated Steel I-Beam Chassis
- Marine Grade Speakers
- Hydraulic Front Landing Gear
- Dual 30# LP Tanks
- Collapsible Exterior Ladder
- Heated and Enclosed Underbelly
- Heated Duct Routed to Underbelly
- Utilities Convenience Center
- Reverse Activated Rear Flood Lights
- Gen Prep with 20 Gallon Fuel Tank
- Attic Ventilation System

INTERIOR STANDARDS

- LED Interior Lighting
- Tongue and Groove Plywood Decking
- Beauflor® Tile Pattern Flooring
- Shaker Style Cabinetry
- Stainless Steel Deep Double Bowl Sink with Solid Surface Sink Covers
- Large LCD Living Room TV
- 42K BTU Furnace
- Insulated Garage Floor
- 12 Cu. Ft. Refrigerator
- Hid-N-Screen
- Porcelain Foot Flush Toilet
- Washer/Dryer Prep in Rear Area
- 5,000 lb. Steel Reinforced Tie Downs
- 15K BTU Ducted A/C
- 100 AMP Converter
- Crown Molding - All Rooms
- Upgraded Beadboard Accents
- Flush Floor Living Room Slideouts
- Residential Shower with Seat

2018 LIGHTNING PACKAGE

- Front Cap LED Strip Lighting
- 7,000 lb. Dexter® Axles
- 7' 6" Main Slide Height
- Wide Stance Frame Upgrade
- Spare Tire
- Stainless Steel Appliances
- Residential Kitchen Faucet
- Satellite Prep Coax to Main TV (Ground Dish)
- Dyson Cordless Vacuum
- Pillow Top Residential Mattress
- Solar Charger Input
- Roller Shades (Bedroom, living room)
- Radiant Roof/Floor/Slide Out Floor/ Front Insulation
- 6-Point Hydraulic Auto Level System

2018 ACCELERATOR PACKAGE

- Solid Surface Countertops in Galley
- Residential Power Recliner Sofa with USB Chargers
- Upgraded Electric Awning with LED Lighting
- Upgraded Entry Step Main Entry
- Main Entry Door Friction Hinge with Window and Upgraded Assist Close Screen Door
- Alumi-Tread Entry Steps Rear
- Rear Vision Camera Prep
- Keyed Alike - Single Key Lock System
- MORryde Zero G Ramp Door
- MORryde CRE Suspension Enhancement
- MaxxAir Powered Roof Vent - Bathroom
- Neo Blue LED Marine Grade Exterior Speakers
- LED Lighted Entry Step Well (Where applicable)
- VIP Party Deck, VIP Party Deck Awning

CUSTOM EXTERIOR PACKAGES

- **Full Body Paint with Premium Gel Coat Sidewalls** (Black Pearl, Victory Red, Freedom Blue, Acid Green, HD Orange)

MANDATORY EQUIPMENT

- **Intensity Package** (Two Tone Painted Cap, Premium Gel Coat Grey Sidewalls, Upgraded Graphics)
- 5.5kW Onan CARB EVAP Generator
- Electric Bed with Max Clearance Pass Thru Dinette
- Mobile Fuel Station with Fuel Tank
- Rotoflex 21K Rated Pin Box

OPTIONAL EQUIPMENT

- **Extreme Weather Package** (Dual Pane Windows, 12V Heated Tanks)
- Second Electric Awning
- 12V - 160 Watt Solar Kit
- Multi-Function Wireless Remote System (N/A with Multiplex)
- Keyless Main Entry Door
- 32" Flat Screen TV (Bedroom, Garage, Std. Patio (422AMP))
- JBL Premium Sound System
- Satellite Wiring Package (Satellite Hook-up to each TV Location - Ground Dish Location)
- One Control Multiplex System
- 110V Residential Refrigerator Upgrade with Inverter
- Convection Microwave
- Second Air Conditioner
- Star Energy High Efficiency Air Conditioner with Three 13.5K High Efficiency A/C's
- MaxxAir Power Roof Vent
- Girard Tankless Water Heater IPO Std. Water Heater
- Three Seasons Door IPO Hid-N-Screen
- Free Standing Table with Chairs and Recliner Seating
- Plush Removable Cargo Carpet
- VIP Patio Steps
- VIP Side Patio Steps
- Two Axle G-Rated 14 Ply Radial Tires
- Three Axle G-Rated 14 Ply Radial Tires
- Screen Wall/Tent Wall IPO Hid-N-Screen
- Tuson Sway Control
- All American Independent Super Suspension System

MODEL	340AMP	341AMP	382AMP	413AMP	422AMP
Hitch Weight	2636	2725	3760	3323	3643
UVW	12698	13903	15729	16280	16364
Cargo Capacity	3938	2822	5271	4720	4636
Exterior Length	40' 4"	43' 0"	43' 9"	44' 6"	44' 6"
Exterior Height	13' 4"	13' 4"	13' 4"	13' 4"	13' 4"
Exterior Width	102"	102"	102"	102"	102"
Fresh Water (gal.)	94	94	158	158	158
Grey Water (gal.)	82	82	80	118	86
Black Water (gal.)	54	54	80	86	86

See back page for chart descriptions.

GVWR (Gross Vehicle Weight Rating) - is the maximum permissible weight of the unit when fully loaded. It includes all weights, inclusive of all fluids, cargo, optional equipment and accessories. For safety and product performance do NOT exceed the GVWR.

GAWR (Gross Axle Weight Rating) - is the maximum permissible weight, including cargo, fluids, optional equipment and accessories that can be safely supported by a combination of all axles.

UVW (Unloaded Vehicle Weight)* - is the typical weight of the unit as manufactured at the factory. It includes all weight at the unit's axle(s) and tongue or pin and LP Gas. The UVW does not include cargo, fresh potable water, additional optional equipment or dealer installed accessories.

*Estimated Average based on standard build optional equipment.

CCC (Cargo Carrying Capacity)** - is the amount of weight available for fresh potable water, cargo, additional optional equipment and accessories. CCC is equal to GVWR minus UVW. Available CCC should accommodate fresh potable water (8.3 lbs per gallon). Before filling the fresh water tank, empty the black and gray tanks to provide for more cargo capacity.

**Estimated average based on standard build optional equipment.

Each Forest River RV is weighed at the manufacturing facility prior to shipping. A label identifying the unloaded vehicle weight of the actual unit and the cargo carrying capacity is applied to every Forest River RV prior to leaving our facilities. The load capacity of your unit is designated by weight, not by volume, so you cannot necessarily use all available space when loading your unit.



Standard Intensity Graphics Package - Aztec Grey with two-tone painted cap



Choose from Five Full Body Paint Options - Black Pearl, HD Orange, Victory Red, Freedom Blue and Acid Green

TURN HEADS AMP it up! XLR Thunderbolt offers five of the hottest full body paint schemes on the road, or in the campground.



Standard Intensity Graphics Package - Aztec Grey with two-tone painted cap



Full Body Paint - Black Pearl



Full Body Paint - Victory Red



Full Body Paint - Acid Green



Full Body Paint - Freedom Blue



Full Body Paint - HD Orange

CONSTRUCTION

1. Two-tone Painted Gel Coat
Fiberglass Radius Cap
2. Molded Hitch Pin Cover
3. Radiant Foil Insulation R38 at 80°F
4. 7,000 lb. E-Z Lube® Dexter® Axles
5. 16" Radial Tires
(G-rated is optional)
6. Nitro Filled Tires (Includes one year, no excuses warranty)
7. 5/8" Plywood Floor Decking
8. Fully Enclosed/Heated Underbelly
9. Holding Tanks Secured by Frame Cradle
10. 3" Wood Floor Joists with Fiberglass Insulation
11. Slam Latch Compartment Doors
12. Ultra View Frameless Windows
13. High Gloss Fiberglass Exterior
14. Laminated and Insulated Slideout End Walls/Roof
15. Beavertail Storage Compartment
16. 1" Garage Floor Decking with Rubberized Flooring
17. 8 Ft. Easy Lift, 3,000 lb. Ramp Door
18. One Piece Super Flex Roofing with 12 Year Materials Warranty
19. 15,000 BTU Air Conditioner
20. 6-Point Hydraulic Level-up System
21. Steel Anchor Plates for 5,000 lb. Tie Downs
22. High Efficiency A/C Duct System
23. Vacuum Bonded Sidewall with Block Foam Insulation
24. 3/8" Roof Decking
25. Fiberglass Roof Insulation
26. Radius Metal Roof Transition
27. Attic Vents
28. 102" Widebody Construction
29. Full Walk On Roof
30. 2" Aluminum Framed Sidewalls
31. Hydraulic Wide Stance Front Landing Gear



See XLR videos and virtual tours
at www.forestriverinc.com/XLR





Dining Area



Garage



Bunk House

PLAY HARD AND REST EASY WITH THUNDERBOLT!

Thunderbolt Toy Haulers maximize versatility. The max clearance dinette folds up for a full 8' of space when loading your toys, plus there's an electric bed above.

It's more than an garage, it's a "flex-room", with textured, gas and oil resistant industrial flooring, designed to transport today's most popular side-by-sides, 4-wheelers, motorcycles, grills, kayaks and bicycles. It's also a dining room, a game room/ recreation area, or a private second bedroom with a second full bathroom, (select models). An optional roll-out carpet amps up the comfort.



PRE-DELIVERY INSPECTION FACILITY

20,000 square feet of quality assurance. The bare essentials for a premium product. This state-of-the-art facility gives immediate daily feedback to production for quality assurance in every unit built.

24/7 EMERGENCY ROADSIDE ASSISTANCE

For a worry-free ownership experience Forest River includes one year of Coach-Net RV Technical & Roadside Assistance with each RV purchase. Whether new to the RV lifestyle or an experienced RV enthusiast, Forest River owners have 24/7 access to technical, operational and emergency road service coverage throughout the US & Canada. Coach-Net's fast, dependable service is just a phone call away.

Coach-Net[®]

RV Technical & Roadside Assistance

FREE MEMBERSHIP

to Forest River Owners' Group

www.forestriverfrog.com

Learn More
Scan this barcode using a QR Reader on your smart phone to learn more about Forest River.

A Berkshire Hathaway company.

XLR TOY HAULERS THUNDERBOLT

XLR Thunderbolt by Forest River
 2421 Century Drive ■ Goshen, IN 46528 ■ Phone: 574-642-0438
 E-mail: XLRinfo@forestriverinc.com ■ #XLRtoyhaulers
www.forestriveraccessories.com

Find us on **Facebook**

See XLR videos and virtual tours at www.forestriverinc.com/XLR

YOUR XLR THUNDERBOLT DEALER

FOREST RIVER OWNER "DIGITAL KIT" APP
 Now you can have your Owner's Manual with you wherever you are. Download our FREE App from the App Store or Google Play and you'll have the information right at your fingertips.

CUSTOMER SATISFACTION
FOREST RIVER encourages you to **BUY LOCAL**

PREFERENTIAL SERVICE PRODUCT INFORMATION

www.ForestRiverBuyLocal.com

Actual towing capacity is dependent on your particular loading and towing circumstances, which includes GVWR, GAWR and GCWR, as well as adequate trailer brakes. Please refer to the Owners Manual of your vehicle for further information. All information contained in this brochure is believed to be accurate at the time of publication. However, during the model year, it may be necessary to make revisions and Forest River, Inc., reserves the right to make all such changes without notice, including prices, colors, materials, equipment and specifications as well as the addition of new models and the discontinuance of models shown in this brochure. Therefore, please consult with your Forest River dealer and confirm the existence of any materials, design or specifications that are material to your purchase decision. ©2018 XLR, a Division of Forest River, Inc., a Berkshire Hathaway company. All Rights Reserved. 3/18