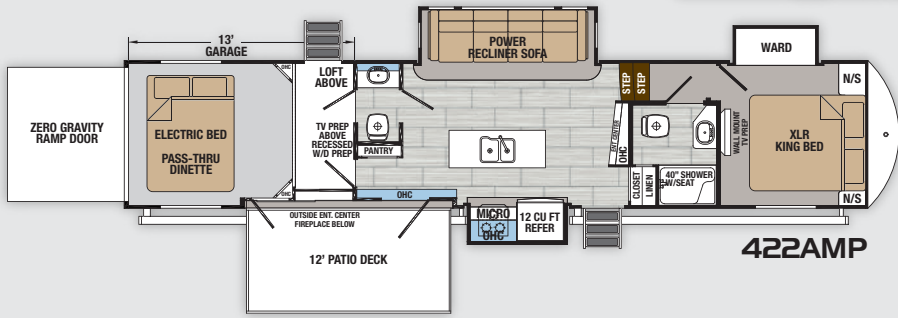
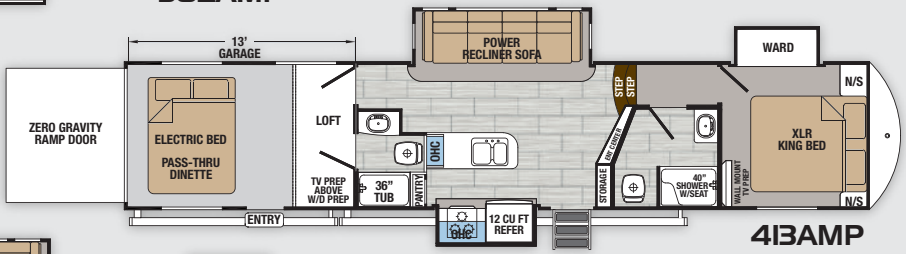
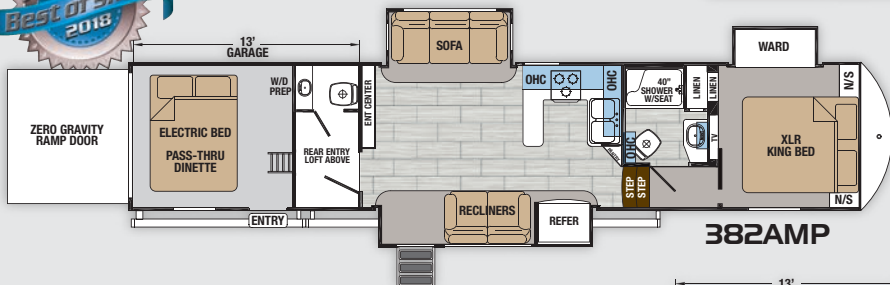
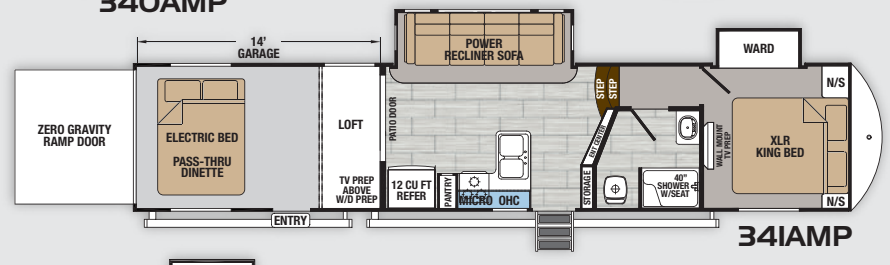
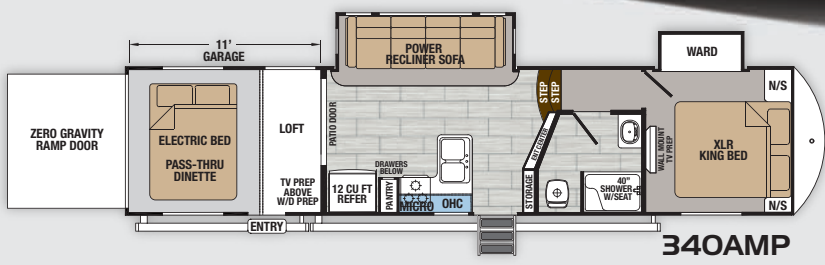


XLR TOY HAULERS THUNDERBOLT



XLR TOY HAULERS THUNDERBOLT

STANDARDS & OPTIONS

INTERIOR DECOR

- Linen ■ Mica ■ Gunmetal

EXTERIOR STANDARDS

- Aluminum Framed Laminated Sidewalls,
- Framed Windows
- 102" Wide Body Construction
- Powder Coated Steel I-Beam Chassis
- Marine Grade Speakers
- Hydraulic Front Landing Gear
- Dual 30# LP Tanks
- Collapsible Exterior Ladder
- Heated and Enclosed Underbelly
- Heated Duct Routed to Underbelly
- Utilities Convenience Center
- Reverse Activated Rear Flood Lights
- Gen Prep with 20 Gallon Fuel Tank
- Attic Ventilation System

INTERIOR STANDARDS

- LED Interior Lighting
- Tongue and Groove Plywood Decking
- Beauflor® Tile Pattern Flooring
- Shaker Style Cabinetry
- Stainless Steel Deep Double Bowl Sink with Solid Surface Sink Covers
- Large LCD Living Room TV
- 42K BTU Furnace
- Insulated Garage Floor
- 12 Cu. Ft. Refrigerator
- Hid-N-Screen
- Porcelain Foot Flush Toilet
- Washer/Dryer Prep in Rear Area
- 5,000 Lb. Steel Reinforced Tie Downs
- 15K BTU Ducted A/C
- 100 AMP Converter
- Crown Molding - All Rooms
- Upgraded Beadboard Accents

- Flush Floor Living Room Slideouts
 - Residential Shower with Seat
- ### 2018 LIGHTNING PACKAGE
- Front Cap LED Strip Lighting
 - 7,000 Lb. Dexter® Axles
 - 7' 6" Main Slide Height
 - Wide Stance Frame Upgrade
 - Spare Tire
 - Stainless Steel Appliances
 - Residential Kitchen Faucet
 - Satellite Prep Coax To Main TV (Ground Dish)
 - Dyson Cordless Vacuum
 - Pillow Top Residential Mattress
 - Solar Charger Input
 - Roller Shades (Bedroom, living room)
 - Radiant Roof/Floor/Slide Out Floor/Front Insulation
 - 6-Point Hydraulic Auto Level System

2018 ACCELERATOR PACKAGE

- Solid Surface Countertops in Galley
- Residential Power Recliner Sofa with USB Chargers
- Upgraded Electric Awning with LED Lighting
- Upgraded Entry Step Main Entry
- Main Entry Door Friction Hinge with Window and Upgraded Assist Close Screen Door
- Alumi-Tread Entry Steps Rear
- Rear Vision Camera Prep
- Keyed Alike - Single Key Lock System
- MORryde Zero G Ramp Door
- MORryde CRE Suspension Enhancement
- MaxxAir Powered Roof Vent - Bathroom
- Neo Blue LED Marine Grade Exterior Speakers
- LED Lighted Entry Step Well (Where applicable)
- VIP Party Deck, VIP Party Deck Awning

CUSTOM EXTERIOR PACKAGES

- **Full Body Paint with Premium Gel Coat Sidewalls:**
Black Pearl, Victory Red, Freedom Blue, Acid Green, HD Orange

MANDATORY EQUIPMENT

- **Intensity Package:** Two Tone Painted Cap, Premium Gel Coat Grey Sidewalls, Upgraded Graphics
- 5.5kW Onan CARB EVAP Generator
- Electric Bed with Max Clearance Pass Thru Dinette
- Mobile Fuel Station with Fuel Tank
- Rotoflex 21K Rated Pin Box

OPTIONAL EQUIPMENT

- **Extreme Weather Package:** Dual Pane Windows, 12V Heated Tanks
- Second Electric Awning
- 12V - 160 Watt Solar Kit
- Multi-Function Wireless Remote System (N/A with Multiplex)
- Keyless Main Entry Door
- 32" Flat Screen TV (Bedroom, Garage, STD Patio 422AMP)
- JBL Premium Sound System
- Satellite Wiring Package (Satellite Hook-up to each TV Location - Ground Dish Location)
- One Control Multiplex System
- 110V Residential Refrigerator Upgrade with Inverter
- Convection Microwave
- Second Air Conditioner
- Energy Management System with Three 13.5K High Efficiency A/C's
- MaxxAir Power Roof Vent
- Girard Tankless Water Heater IPO Std Water Heater
- Three Seasons Door IPO Hid-N-Screen
- Free Standing Table with Chairs and Recliner Seating
- Plush Removable Cargo Carpet
- VIP Patio Steps
- VIP Side Patio Steps
- 2 Axle G-Rated 14 Ply Radial Tires
- 3 Axle G-Rated 14 Ply Radial Tires
- Screen Wall/Tent Wall IPO Hid-N-Screen
- Tuson Sway Control
- All American Independent Super Suspension System

MODEL	340AMP	341AMP	382AMP	413AMP	422AMP
Hitch Weight	2636	2725	3760	3323	3643
UVW	12698	13903	15729	16280	16364
Cargo Capacity	3938	2822	5271	4720	4636
Exterior Length	40' 4"	43' 0"	43' 9"	44' 6"	44' 6"
Exterior Height	13' 4"	13' 4"	13' 4"	13' 4"	13' 4"
Exterior Width	102"	102"	102"	102"	102"
Fresh Water (gal.)	94	94	158	158	158
Grey Water (gal.)	82	82	80	118	86
Black Water (gal.)	54	54	80	86	86

GVWR (Gross Vehicle Weight Rating) - is the maximum permissible weight of the unit when fully loaded. It includes all weights, inclusive of all fluids, cargo, optional equipment and accessories. For safety and product performance do NOT exceed the GVWR.

GAWR (Gross Axle Weight Rating) - is the maximum permissible weight, including cargo, fluids, optional equipment and accessories that can be safely supported by a combination of all axles.

UVW (Unloaded Vehicle Weight)* - is the typical weight of the unit as manufactured at the factory. It includes all weight at the unit's axle(s) and tongue or pin and LP Gas. The UVW does not include cargo, fresh potable water, additional optional equipment or dealer installed accessories.

*Estimated Average based on standard build optional equipment.

CCC (Cargo Carrying Capacity)** - is the amount of weight available for fresh potable water, cargo, additional optional equipment and accessories. CCC is equal to GVWR minus UVW.

Available CCC should accommodate fresh potable water (8.3 lbs per gallon). Before filling the fresh water tank, empty the black and gray tanks to provide for more cargo capacity.

**Estimated average based on standard build optional equipment

Each Forest River RV is weighed at the manufacturing facility prior to shipping. A label identifying the unloaded vehicle weight of the actual unit and the cargo carrying capacity is applied to every Forest River RV prior to leaving our facilities. The load capacity of your unit is designated by weight, not by volume, so you cannot necessarily use all available space when loading your unit.

XLR Thunderbolt by Forest River

2421 Century Drive ■ Goshen, IN 46528 ■ E-mail: XLRinfo@forestriverinc.com

Phone: 574-642-0438 ■ www.forestriverinc.com/XLR

www.forestriveraccessories.com ■ #XLRtoys haulers

