



VENGEANCE

a Division of Forest River

Laminated Product Construction

Chassis & Main Floor Construction



FEATURE:

We use a true **wide body 12" I-beam chassis**.

BENEFITS:

- Wider center of gravity for better towing
- I-beam rails are set **6" wider than industry standard**
- Stronger side wall support for overall structural quality

FEATURE:

5/8" tongue and groove marine grade plywood flooring; 2x3 studs averaging **12" on center**.

BENEFITS:

- Tongue and groove process ensures strength and prevents warping
- Darco wrap blocks moisture and condensation
- Residential insulation built in for additional protection
- 2x3 studs maximize structural integrity



FEATURE:

Enclosed underbelly with **TRIPLE insulation**.

BENEFITS:

- Corrugated underbelly is first line of defense against the elements
- Extra insulation laid on top of underbelly before tanks are dropped in
- Tanks, plumbing, wiring all protected below and above with insulation
- Underbelly lag bolted to cross members from underneath to prevent sagging.

Laminated Product Construction

Vacuum Bonded Aluminum Framed Side Walls



FEATURE:

Vacuum Bonded laminated sidewalls.

BENEFITS:

- Better than pinch rolled process
- Wall is placed in a "bag" then air is sucked out creating even pressure across the wall during the bonding process
- Pinch rolled can have pressure issues depending on machines setting leading to inconsistency and quality issue



FEATURE:

Laminated slide out end walls & slide out roofs

BENEFITS:

- Stronger, yet lighter
- Dense block foam insulation for better insulated protection
- Textured exterior surface to ensure slide out seals properly



FEATURE:

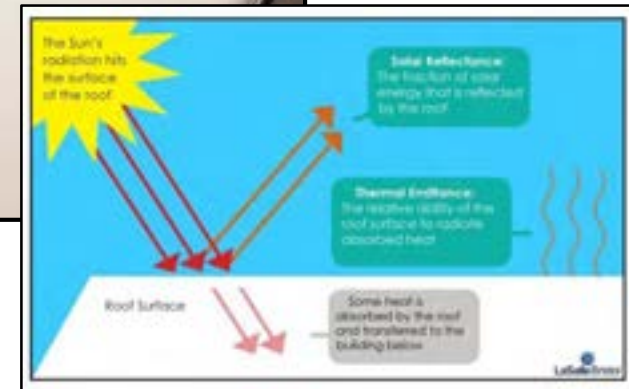
Laminated bed deck floors

BENEFITS:

- Stronger, yet lighter
- Dense block foam insulation for better insulated protection
- 5/8" decking bonded to aluminum frame is stronger and lasts longer.

Laminated Product Construction

Roof Construction



FEATURE:

16" on center truss spacing.

BENEFITS:

- Strongest roof construction in the industry
- Full Walk on capability

FEATURE:

All wires run through **central location** in unit.

BENEFITS:

- Central location to access wiring inside the coach
- Any potential maintenance or later add ons are easier

FEATURE:

Built in **sections** rather than as a "whole" like some competitors.

BENEFITS:

- No warping from long sections
- Better quality control and easier maintenance

FEATURE:

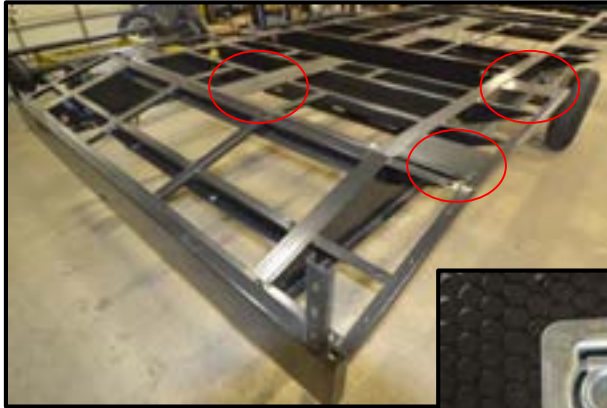
PVC (Poly Vinyl Chloride) Roof Material

BENEFITS:

- 86% Solar reflectivity keeping the coach cooler
- **Highest tear strength and 2x's puncture resistance** of traditional TPO and Rubber.
- Thickest wear layer while being 27% lighter

Laminated Product Construction

Garage Construction



FEATURE:

Welded steel plates for **5,000 lb. tie downs** to be secured to.

BENEFITS:

- 5,000 lb. tie downs secured to welded steel plates on the chassis.



FEATURE:

Tuff-ply cargo floor

BENEFITS:

- Outstanding durability and unmatched traction
- Chemical resistant
- No odor emitted commonly experienced with rubber based membranes

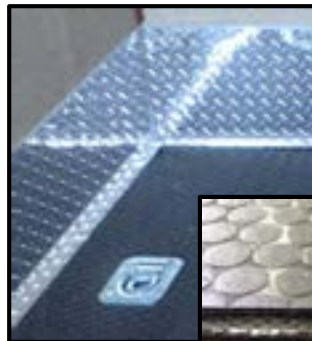


FEATURE:

7/8" Garage floor decking

BENEFITS:

- 1" thick after applying tuff ply cargo floor.
- Extremely thick and solid to prevent soft spots due to high load levels in cargo area
- 3,000 lb. cargo capacity



FEATURE:

12" Diamond plate base boards

BENEFITS:

- Protected walls from wheel scuffs as well as damage when cleaning the garage

FEATURE:

Multiple **overlapping layers** of protection

BENEFITS:

- Darco material is pulled over the edges for first layer
- Tuff-ply flooring overlaps the darco
- Diamond plate overlaps the Tuff-ply
- Top protection of decking making cleaning of the garage safe

Laminated Product Construction

Axles, Brakes & Tires



FEATURE:
16" Radial tires with nitrofil & forward self-adjusting brakes.

BENEFITS:

- Radial tires have a wider footprint, run cooler & a longer tread life.
- Self-adjusting brakes provides 50% better braking distance.
- Prevents premature brake line and magnet wear



FEATURE:
Equa-Flex suspension shock absorbing system.

BENEFITS:

- Helps eliminate damage to cargo and trailer caused by road shock and vibrations
- Reduces fore-to-aft movement (chucking)

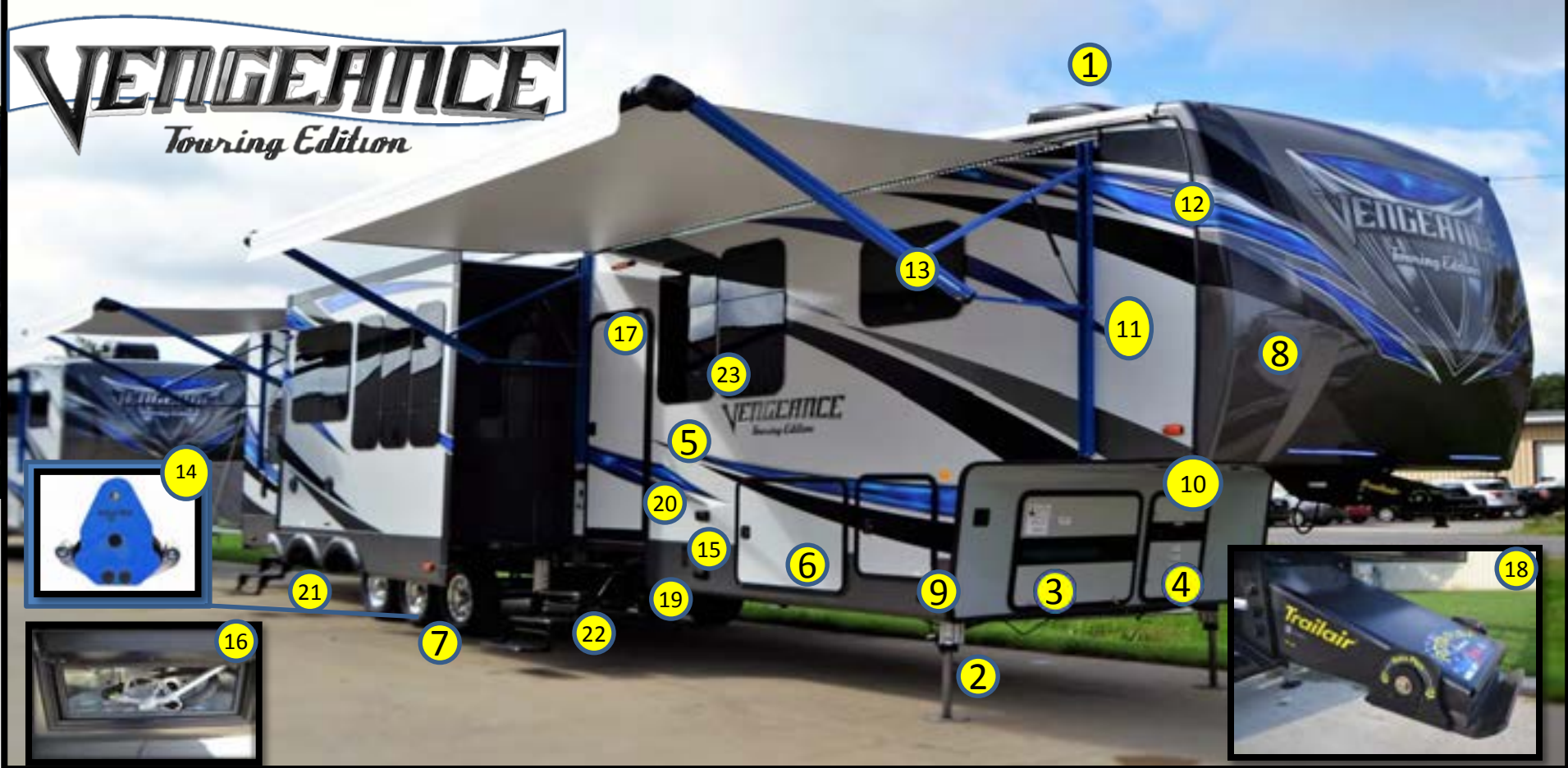
FEATURE:
7,000 lb. E-Z lube axles

BENEFITS:

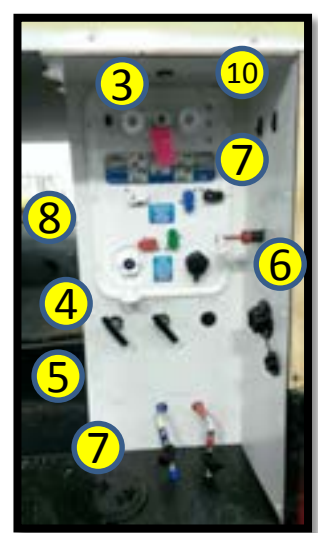
- Heavy duty axle strength for all uses makes our trailers safer.
- E-Z lube system makes maintenance quick and easy.

VENGEANCE

Touring Edition

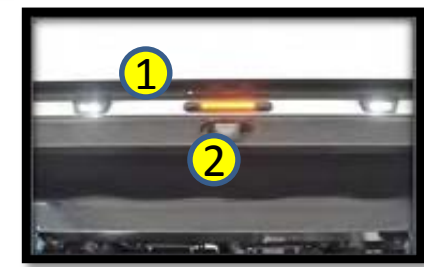


1. 3 A/C's Standard w/ Power Management System
2. 6 Point Hydraulic Leveling System
3. 5.5 Onan Generator
4. Dual 30 lb. LP Tanks
5. Slide Out Selector Valves
6. Slam Latch Insulated Baggage Doors
7. 16" Radial Nitrogen Filled Tires
8. Painted Fiberglass Front Cap w/ LED Lights
9. Solar Prep
10. Alumifoil Insulation in Underbelly , Front Cap, Roof,& Garage Floor
11. Lamilux 1000 Fiberglass Sidewalls
12. 102' Wide Body w/ True Wide Body Chassis
13. Power Awnings w/ LED Light Strips & Vengeance Blue Arms
14. Vengeance Blue Equa Flex Suspension
15. Waste Master Waste Sewer Hose
16. 40 Gallon Fuel Cell W/ Generator prep
17. 30" Wide Entry Doors
18. TrailAir Roto Flex Hitch Pin Box
19. LP Quick Connect
20. Outside Entertainment: Power outlets, Cable out, DVD out, and Speaker Brackets
21. Spare Tire
22. 4 Step Lockable Entry Steps
23. Tinted Frameless Windows



1. Ultra Bright Exterior Loading Lights
2. Back-up Camera Prep
3. Outside shower
4. Evacuation Valves
5. Tank Fills
6. Battery Disconnect
7. Cable Satellite Hook up
8. Winterization
9. Low Point Valves
10. Compartment Light

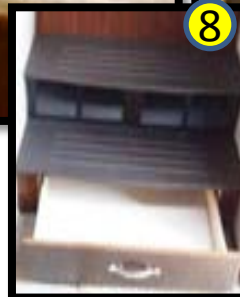
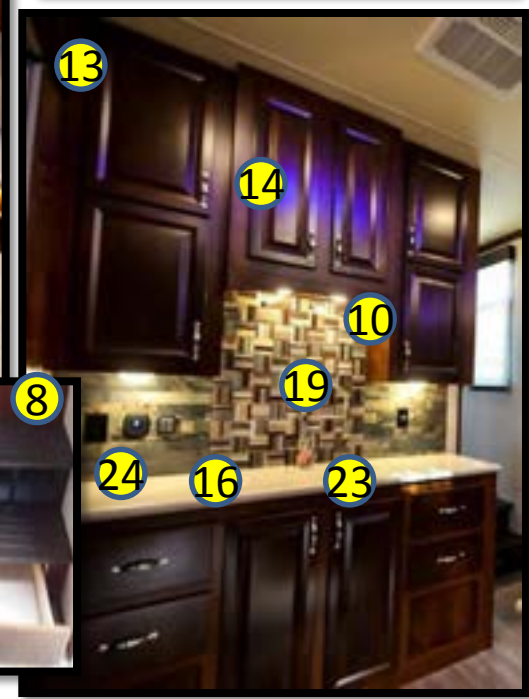
11. Extended Gutter Spout
12. Pull Down Rear Screen Wall
13. 3 Season Wall (optional)
14. Collapsible Roof Ladder
15. Upgraded Ramp Patio System
16. Rear Power Awning with LED Light Strip
17. 15' Cable Lock Equipment Security System
18. 10 Gallon DSI Water Heater
19. Ram Air Garage Ventilation System
20. Exterior LED Lighting
21. 7000 lb. Axles





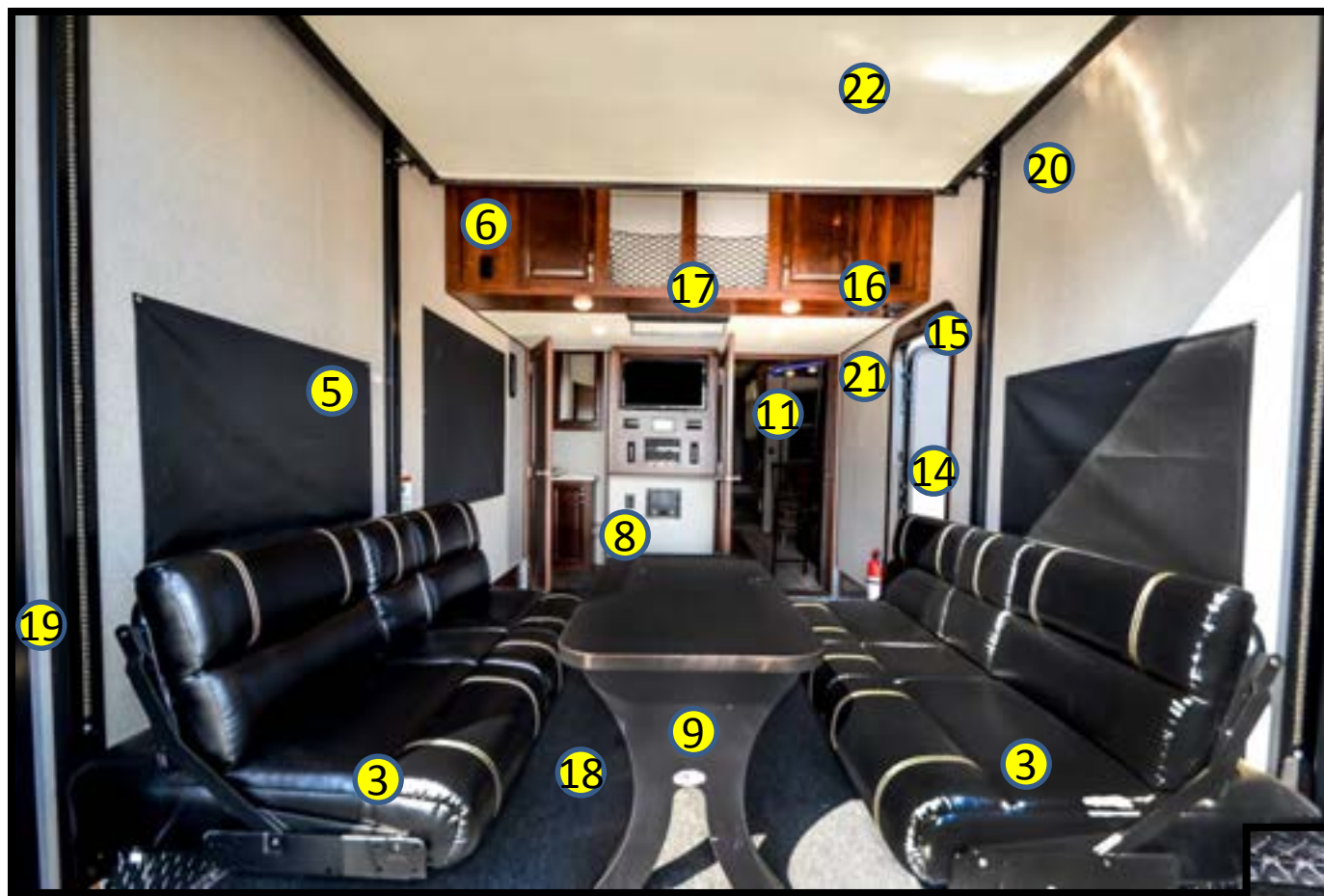
- | | |
|---|---|
| 1. 48" LED TV Flat Screen | 14. Power Kitchen Fan w/ Rain Sensor |
| 2. Sound Bar | 15. Residential Microwave |
| 3. Blue Ray Player | 16. Solid Surface Counters Tops |
| 4. Multiple USB Charging Ports | 17. Interior LED Lighting |
| 5. 20 CF. Residential Refrigerator | 18. Steel Loft Ladder |
| 6. Led Accent Lighting | 19. Oversized Garage Vapor Lock Door |
| 7. 1000 watt Inverter | 20. Flush Mount Living Room Slideout |
| 8. Ball Bearing Drawer Glides | 21. Residential Crown Molding |
| 9. Raised Panel Cabinetry w/ Hidden Hinges | 22. Upgraded Lino Kitchen Slideout Flooring |
| 10. LED Accent Lighting Under Counter & Kickboard | 23. Lockable Swing Arm |
| 11. Real Wood Fascia | 24. Upgraded Decoration LED Lighting |
| 12. Loft TV Prep | |
| 13. Flush Mounted Stove W/ Glass Cover | |

VENGEANCE
Touring Edition



1. Large 48" LED Flat Screen TV in Living Room
2. Steel Loft Ladder
3. Flush Mount Slide out
4. New Window Treatments
5. Decorative LED Accent Lighting
6. Vacuum Bonded Slide Out Walls,& Roof
7. Free Standing Table and Chairs
8. Composite Steps with Storage Compartment
9. TV Prep in Loft
10. Upgraded Residential Kitchen Back Splash
11. C&C Routed Ceiling Treatments- No Pinched Wires
12. Insulated Slide Out Floors
13. Pocket Screwed Cabinetry
14. Lumber Core Stiles
15. Heated Reclining Theater Seats
16. Solid Surface Counters
17. Roller Shades Window Covers
18. 5,000 BTU Electric Fireplace
19. Pull Down Sprayer Faucet
20. Pop Up Power Outlet in Counter Top
21. Ducted A/C
22. Residential Fluted Glass Cabinet Inserts
23. Stainless Steel Under Mount Sink W/ Sink Covers
24. Tons of outlets

VENGEANCE
Touring Edition



- 1. 28" TV in Garage w/ Lockable Swing Arm
- 2. 500 Watt Amplifier
- 3. Overstuffed Hinged Happijac Sofa w/ Fold Down Cup Holder for Improved Clearance Height
- 4. Bluetooth Touchscreen Stereo w/ DVD in Garage
- 5. Snap on Black out Window
- 6. Garage Storage Cabinets
- 7. Dove Tail Garage Floor
- 8. Washer and Dryer Prep
- 9. Weather Resistant Laminated Free Standing Table
- 10. 12" Diamond Plate Base Board
- 11. Oversized Vapor Barrier Garage Door
- 12. Tuff Ply Cargo Floor
- 13. 5000 lb. Tie Downs Anchored to Chassis

- N. Bose Interior and Exterior Speakers w/ Brackets
- O. Outside Cable and DVD wired
- P. Speaker Selection Switch
- Q. Fold Away Mounted Hanging Rod
- R. Indoor/Outdoor Garage Carpet
- S. Standard Roll Down Screen or 3 Seasons Wall Option
- T. 13.5 K BTU A/C Unit w/ 5k BTU Heat Strips Inside
- U. Garage Thermostat
- V. Queen Size Top Bunk
- W. Alumifoil Floor Insulation





1. 28" LED Flat Screen TV
2. 6 Dresser Drawers on Ball Bearing Drawer Guides
3. Pull Down Pleated Shades
4. His/ Hers USB Charging Ports
5. Hard Wood Slide out Fascia
6. Cable and Satellite Hook Ups
7. Large Window
8. Above Bed Storage
9. 13.5 BTU A/C
10. Upgraded light Fixtures (His & Her)
11. Upgraded Padded Headboard
12. Denver Mattress
13. Huge Mirrored Wardrobe
14. Additional Storage Cabinets
15. 2 Heat Ducts Direct from Furnace
16. His & Hers Night Stand
17. Cubby Storage w/ Outlets
18. Upgrade Window Treatment
19. Outlets on Both Sides



VENGEANCE
Touring Edition

VENGEANCE

Touring Edition



1. Large Walk In Shower with Glass Surround
2. Glass Shower Door
3. Shower Bench Seat
4. Adjustable and Removable Shower Head
5. 3 Shower Shelves
6. Upgraded Under lit Solid Surface Counter Top
7. Vessel Bowl Sink
8. Upgraded Faucet

9. Linen Storage Cabinet
10. Extra Large Skylight
11. Under Sink Storage
12. Porcelain Foot Flush Toilet
13. Ceiling Treatment w Two Led Lights
14. Extra Large Mirror
15. Upgraded Bathroom Entry Door
16. Bathroom Door Swings into Bathroom NOT Hallway
17. Extra Bathroom Storage

VENGEANCE

Touring Edition

The Vengeance VALUE difference!

Triple A/C units with Power management system



Vengeance includes 3 A/C units **STANDARD** on every Touring Edition

We also use the industry's **BEST** power management system so **ALL** 3 A/C's can be ran when on 50 Amp service.

Includes:

- 15,000 BTU ducted A/C in living room and bathroom
- 13,500 BTU A/C dedicated to the bedroom
- 13,500 BTU A/C dedicated to the garage
 - Includes 5,000 BTU heat strips
 - On its own thermostat for climate control

FEATURE:

Power management system

BENEFITS:

- Controls the load and will automatically cycle specific electronics to avoid blowing breakers
- Electric on water heater is first to be bypassed
 - Automatically flips to gas
- System will cycle through turning off compressors on A/C units if more power is needed
- Fans continue to run during this time

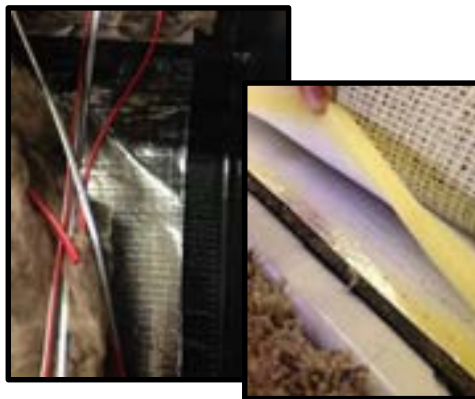
VENGEANCE

Touring Edition

The Vengeance VALUE difference!

Insulation PLUS insulation Package STANDARD

- Outer Layer of R31 Radiant Foil Technology Over R9 Residential Insulation in Ceiling, Front Cap and Gooseneck
- Radiant Foil Technology in Underbelly with Layer of R9 Residential Insulation Overlaid
- 12V Heated Holding Tank Pads on All Tanks
- R9 Residential Insulation Built Into the Floor
- R31 Radiant Foil Technology in Slide Out Floors Overlaid with Foam
- R31 Radiant Foil Technology Built Into Garage



FEATURE:

42,000 BTU furnace.

BENEFITS:

- Upgraded from the 35,000 BTU furnace with only 4 out ports.
- 5 out ports supplying heat distributes better and more evenly throughout multiple rooms of the coach.

FEATURE:

Radiant foil used in **conjunction** with **residential fiberglass insulation and/or foam.**

BENEFITS:

- Necessary to gain total advantage of the radiant foil insulation
- Regulates the foil temperatures
- Additional overall layer of insulation.

FEATURE:

Best in class underbelly insulation and protection

BENEFITS:

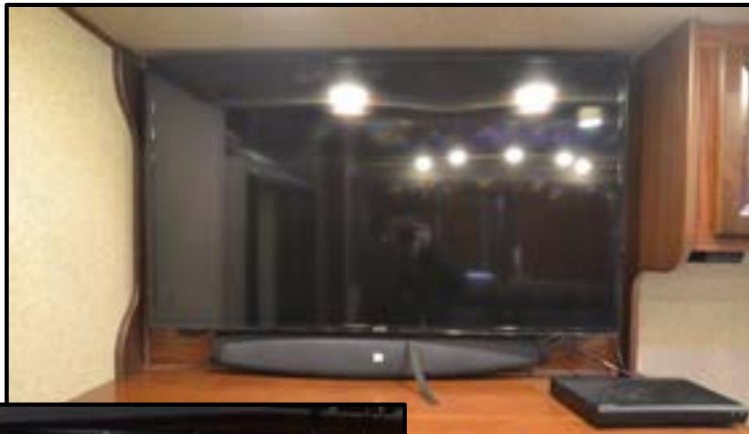
- Corrugated enclosed underbelly
- Radiant Foil Layer
- Residential insulation layer before tanks are dropped in
- 12 volt heat pads on all tanks
- Darco moisture wicking wrap under floor
- Additional layer of residential insulation built into the floor
- **All plumbing and wiring "sandwiched" between those layers for best protection**

VENGEANCE

Touring Edition

The Vengeance VALUE difference!

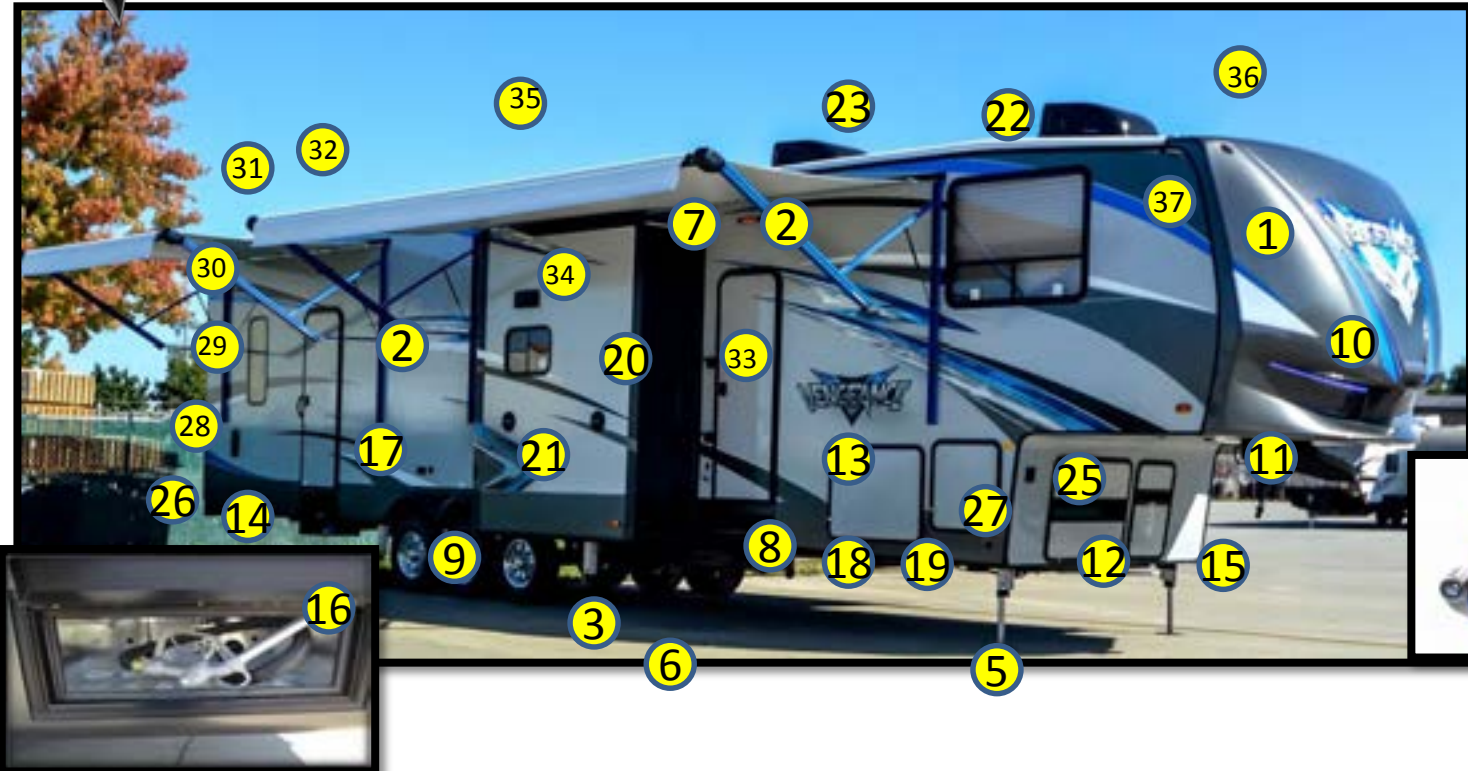
FULLY LOADED Entertainment Package



Package Includes:

- 48" Flat screen TV in living room on locking swing arm bracket
- Sound Bar with bass and surround boost
- Blu ray player
- Satellite and cable ready
- Loft TV Prep
- 28" Flat screen TV in bedroom
- Satellite and cable ready in bedroom
- 28" Flat screen TV in garage
- Sony touchscreen stereo & DVD player
- BOSE marine speakers with interior and exterior brackets
- 500 watt amplifier
- Upgraded Sony Interior Speakers
- Indoor/Outdoor speaker selector switch
- Sony Exterior Speakers
- Cable & DVD wired for outside entertainment
- LED accent lighting

VENGEANCE



- | | | |
|---|---|---|
| <ul style="list-style-type: none"> 1. Aerodynamic Painted Fiberglass Front Cap w/ Improved Turn Radius 2. Power Awning w LED Lighting & Vengeance Blue Arms 3. 7000 lb. axels w/ 8 Lug Wheels 4. Equa Flex Suspension 5. Hydraulic Front Landing Gear(3 Axle & Electric Front Landing Gear on 2 axle models) 6. Enclosed & Heated Underbelly 7. Laminated Slide Out End Walls & Roof 8. Triple 9" Gap Steps w/ Travel Lock 9. ABS Fender Skirts 10. LED Accent Lighting on Front Cap | <ul style="list-style-type: none"> 11. Aerodynamic FRONT Spoiler For Best in Tow Ability in Class 12. Dual 30 lb. LP Tank Upgrade 13. Upgraded Baggage Doors 14. Upgraded Garage w/ 5000 lb. Tie Downs 15. 6" Wider I-Beam on Chassis 16. Fuel Station w/ Pump 17. Exterior TV, Cable Hook up 18. Detachable Coil Spray Hose 19. Detachable Power Cord 20. Vacuum Bonded Aluminum Framed Side Walls 21. Sony Marine Grade Speakers 22. 15K Ducted A/C | <ul style="list-style-type: none"> 23. 2nd A/C Prep 24. Central Docking Station 25. Gen Prep w/ Transfer Switch 26. Spare Tire 27. Solar Prep and Wiring 28. Ram Air Garage Ventilation 29. 100% LED Exterior Lighting 30. Back Up Camera Prep 31. Rear Patio Awning Prep 32. Rear Loading Lights 33. Extra Large Grab Handle 34. Hydraulic Slide Outs(any opposing living room slide) 35. Full Walk On Roof 36. PVC Roof 37. Extended Roof Spout |
|---|---|---|



1. Upgraded Hinged Over Stuffed Happijac w/ Fold Down Cup Holders
2. Black Tank Flush
3. Ramp Door Patio System
4. Garage Bluetooth Stereo With Speakers
5. Outside Shower with Hot and Cold Water
6. LED Rear Loading Lights
7. Screen Wall / Tent Wall
8. 8' Ramp Door
9. Washer & Dryer Prep
10. Queen Size Top loft
11. Snap on Black Out Blinds
12. TV Bracket w/ Cable Prep
13. Washer and Dryer Hook Up(3 axle model only)
14. Ultra Bright LED Loading Lights
15. Ducted Heat into Garage
16. 3000 lb. Cargo Capacity
17. Led Brake Lights
18. Tuff Ply Cargo Floor

19. Free Standing Folding Table
20. Ram Air Garage Ventilation
21. Rear Patio Awning Prep
22. Back up Camera Ready
23. PVC Walk-on Roof
24. Outside Outlet and Cable Prep for Outside Entertainment
25. 24" Beaver Tail Transition
26. 12" Diamond Plate Base Board
27. 92" Under Loft Clearance
28. Indoor/Outdoor Carpet
29. Ramp Door Prep for Patio system
30. Upgraded Ramp Patio System (optional)
31. Outlets mounted Vertically
32. Ducted A/C into Garage

VENGEANCE



- | | |
|--|--|
| 1. 48" Best in Class Viewing Angle Flat LED Screen | 15. Heated Reclining Theatre Seating |
| 2. Upgraded Seamless Counter Tops | 16. 100% LED lighting |
| 3. Under Mounted Stainless Steel Farm House Style Sink | 17. Back Lit Switches |
| 4. Sink Covers | 18. Flush Mounted 3 Burner Cook Top w/ Glass Cover |
| 5. Residential Wood Blinds in Living Room | 19. Slide Out Storage Cab |
| 6. Multiple USB Charging Ports & Outlets | 20. Ball Bearing Drawer Guides |
| 7. Upgraded Stainless Steel Refer w/ 1000w Inverter | 21. Floor Ducted Heat |
| 8. Upscaling Residential DVD Player | 22. Large Kitchen Slide Out Storage |
| 9. Bluetooth Stereo | 23. Decorative Cabinets w/ Fluted Glass Inserts |
| 10. Extra Tall 83" Slide Rooms | 24. New Storage Center |
| 11. Upgraded Residential Pull Down Faucet | 25. Decorative LED Pendant Light |
| 12. Living Room Mirror | 26. Microwave / Convection Oven |
| 13. 15k Ducted A/C | 27. Booth Dinette w/ Accent lighting & Storage |
| 14. New Composite Steps | 28. Backlit Cabinet Accent Lighting |

- 29. Hidden Command Center
- 30. LED Accent Lighting
- 31. Tons of Counter Top Space



VENGEANCE



1. His/Hers USB Charging Stations
2. His/ Her Nightstand lights
3. Ducted Heat
4. 6 Dresser Drawers
5. Multiple Outlets
6. Extra Storage Above Bed
7. Bedside His/Hers Night Stand
8. Vengeance King
9. 13.5 BTU A/C (option)
10. Wardrobe Slide Out w/ Mirrored Wardrobe
11. Outlets on Both Sides of Bed
12. Pleated Window Shades
13. His & Hers Night Tables
14. Interior LED Lighting
15. Under Bed Storage on Struts
16. Padded Head Board
17. 2nd A/C Prep



1. Neo Angle Glass Enclosure
2. Linen Closet Storage
3. Power Fan/ Vent
4. Extra Large Skylight
5. Mirrored Medicine Cabinet
6. Unmatched Floor Space
7. Ducted Heat
8. Ducted A/C
9. Foot Flush Toilet
10. Under Sink Cabinet Storage
11. Large Skylight
12. Dual Entry

VENGEANCE

VENGEANCE

Laminated Travel Trailer Construction



FEATURE:

We use a true **wide body 10" I-beam chassis**.

BENEFITS:

- Wider center of gravity for better towing
- I-beam rails are set 6" wider than industry standard
- Stronger side wall support for overall structural quality
- Added support for the generator compartment



FEATURE:

Lightweight laminated bed/bath floor construction

BENEFITS:

- Aluminum floor framing instead of wood studs to keep weight down
- Thick foam insulation built into the floor



FEATURE:

Enclosed underbelly with **TRIPLE insulation**.

BENEFITS:

- Corrugated underbelly is first line of defense against the elements
- Extra insulation laid on top of underbelly before tanks are dropped in
- Tanks, plumbing, wiring all protected below and above with insulation
- Underbelly lag bolted to cross members from underneath to prevent sagging.

FEATURE:

Vacuum Bonded laminated sidewalls.

BENEFITS:

- Better than pinch rolled process
- Wall is placed in a "bag" then air is sucked out creating even pressure across the wall during the bonding process
- Pinch rolled can have pressure issues depending on machines setting leading to inconsistency and quality issue



FEATURE:

7/8" Garage floor decking

BENEFITS:

- 1" thick after applying tuff ply cargo floor.
- Extremely thick and solid to prevent soft spots due to high load levels in cargo area
- 3,000 lb. cargo capacity



VENGEANCE

Laminated Travel Trailer Construction



FEATURE:

Multiple **overlapping layers** of protection

BENEFITS:

- Darco material is pulled over the edges for first layer
- Tuff-ply flooring overlaps the darco
- Diamond plate overlaps the Tuff-ply
- Top protection of decking making cleaning of the garage safe



FEATURE:

Tuff-ply cargo floor

BENEFITS:

- Outstanding durability and unmatched traction
- Chemical resistant
- No odor emitted commonly experienced with rubber based membranes



FEATURE:

Welded steel plates for **5,000 lb. tie downs** to be secured to.

BENEFITS:

- 5,000 lb. tie downs secured to welded steel plates on the chassis.



FEATURE:

16" on center truss spacing.

BENEFITS:

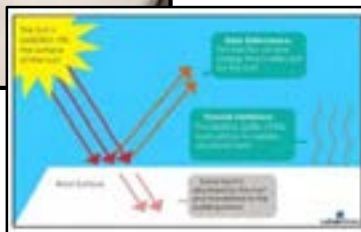
- Strongest roof construction in the industry
- Full Walk on capability

FEATURE:

All wires run through **central location** in unit.

BENEFITS:

- Central location to access wiring inside the coach
- Any potential maintenance or later add ons are easier



FEATURE:

PVC (Poly Vinyl Chloride) Roof Material

BENEFITS:

- 86% Solar reflectivity keeping the coach cooler
- **Highest tear strength and 2x's** puncture resistance of traditional TPO and Rubber.
- Thickest wear layer while being 27% lighter

Exterior Features



102" WIDE BODY means we FIT THE BIGGEST TOYS!

1. Vacuum bonded, laminated, aluminum framed side walls
2. Block foam insulated side walls
3. Wide body chassis
4. Power awning with LED lighting
5. Chassis prep for fuel station and generator (4.0 Onan)
6. Marine grade exterior speakers
7. Extra large entry grab handle
8. Outside power outlet
9. LED exterior lighting
10. Ramp patio prep
11. Back up camera ready
12. ABS fender skirts
13. 5,200lb. Axles
14. Aluminum rims
15. Triple step entry steps
16. Corrugated enclosed underbelly
17. Insulated underbelly
18. Two 20lb. LP bottles for easy exchange
19. ABS easy access LP bottle cover
20. Outside shower with hot and cold
21. Black tank flush
22. Aerodynamic radius front end
23. Aluminum framed front end construction
24. Diamond plate rock guard
25. 13,500 BTU ducted A/C
26. 6 gallon gas/electric DSI water heater
27. Extended drip spouts
28. Walk-on radius roof
29. PVC roof

26FB13



23FB13



VENGEANCE TOURING TT	T23FB13	T26FB13
Dry Hitch Weight	876-lbs	TBA-lbs
Unloaded Vehicle Weight	5526-lbs	TBA-lbs
Axle Weight	4612-lbs	TBA-lbs
GVWR w/Brakes	9525-lbs	TBA-lbs
Cargo Carrying Capacity	3999-lbs	3999-lbs
Exterior Length	28'-6"	32'-0"
Exterior Height w/ AC	11' 7"	11' 7"
Exterior Width	102"	102"
Grey Capacity	32-gal	64-gal
Black Capacity	32-gal	32-gal
Fresh Capacity	53-gal	53-gal
Awning Size	15'	18'
Cargo Area Size-Off DS	70"	72"
Cargo Area Size-DS	166"	162"

Bedroom & Bathroom Features



1. Queen Bed
2. Large 2 door wardrobe
3. Three dresser drawers
4. Nightstand with outlet
5. Under bed storage
6. Multiple wall outlets
7. TV/Cable prep
8. TV bracket mounted
9. Ducted heat
10. Ducted A/C
11. Decorative headboard
12. 48" walking space at the foot of the bed
13. 70" Walking space on the side of the bed
14. Additional wardrobe storage
15. Pull down shade for window

-
1. Shower with surround and curtain
 2. Adjustable and removable shower head
 3. Large skylight
 4. Three built in shelves in shower
 5. Power vent
 6. Large sink
 7. Self edge countertop
 8. Medicine cabinet storage
 9. Additional storage under the sink
 10. Foot flush toilet
 11. GFI outlet

SUPER SPORT Product Construction

Chassis & Main Floor Construction



FEATURE:

We use a **rust resistant powder coated** frame with **full length outriggers**

BENEFITS:

- Our outriggers are full length ensuring floors and walls are 100% supported by the frame
- I-beams engineered specific for each floor plan

FEATURE:

5/8" tongue and groove marine grade plywood flooring; 2x3 studs averaging **12" on center**.

BENEFITS:

- Tongue and groove process ensures strength and prevents warping
- Darco wrap blocks moisture and condensation
- Residential insulation built in for additional protection
- 2x3 studs maximize structural integrity



FEATURE:

Enclosed underbelly with **TRIPLE insulation**.

BENEFITS:

- Corrugated underbelly is first line of defense against the elements
- Extra insulation laid on top of underbelly before tanks are dropped in
- Tanks, plumbing, wiring all protected below and above with insulation
- Underbelly lag bolted to cross members from underneath to prevent sagging.

Product Construction

Side Walls Construction



FEATURE:

Jig construction technique guarantees consistent product construction

BENEFITS:

- All walls for similar floor plans are built to exact specs
- Maintains quality

FEATURE:

2x2 Wall studs average **12" on center**; 4" better than industry standard of 16"

BENEFITS:

- Stronger wall
- Durable during towing
- Wood offers added insulation



FEATURE:

Residential **batten insulation** throughout

BENEFITS:

- Fiberglass insulation is glued into every possible portion of the walls and front cap
- Thick layers are cut to fit perfectly
- Same insulation used in homes

Product Construction

Side Walls Construction Continued



FEATURE:

4 7/8" x 1 1/2" **13 ply LDL wood** slide out frames.

BENEFITS:

- Slide outs are framed with these heavy duty beams to ensure wall quality.

FEATURE:

High wind strapping

BENEFITS:

- Shown here on the slide out framing for additional support
- We also have these straps placed between roof wall and floor and wall to add to the structural stability



FEATURE:

Front radius **wood**

BENEFITS:

- Wood added to the radius to ensure a tight and secure seal



FEATURE:

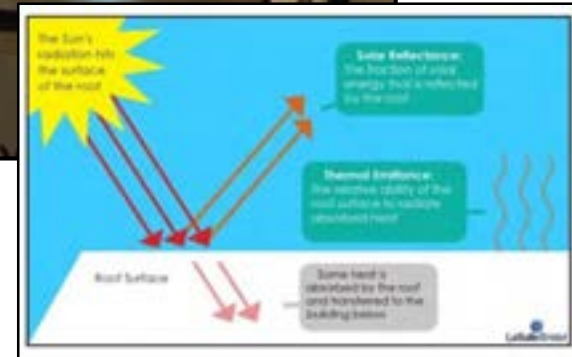
On aluminum sided units we use **foam-core** around windows and doors.

BENEFITS:

- Ensures tight seal of windows and doors when added to the trailer

Product Construction

Roof Construction



FEATURE:

16" on center truss spacing.

BENEFITS:

- Strongest roof construction in the industry
- Full Walk on capability

FEATURE:

Built in **sections** rather than as a "whole" like some competitors.

BENEFITS:

- No warping from long sections
- Better quality control and easier maintenance

FEATURE:

PVC (Poly Vinyl Chloride) Roof Material

BENEFITS:

- 86% Solar reflectivity keeping the coach cooler
- **Highest tear strength and 2x's puncture resistance** of traditional TPO and Rubber.
- Thickest wear layer while being 27% lighter

Product Construction

Garage Construction



FEATURE:

5/8" Tongue and groove plywood garage floors w/**Tuff ply cargo flooring**

BENEFITS:

- Tongue and groove process ensures strength and prevents warping
- Tuff-ply flooring is durable and offers unmatched traction
- Chemical resistant
- No odor emitted commonly experienced with other rubber membrane



FEATURE:

5" Diamond plate base boards w/**1" floor crimp** for overlapping

BENEFITS:

- Diamond plate protects the walls when loading and unloading
- Additional protection for walls when cleaning garage
- Crimped at the bottom to form an overlapping layer on top of tuff-ply material for additional protection



FEATURE:

2,500lb. Tie downs **screwed and glued** into the floor.

BENEFITS:

- Triple screwed into floor studs
- Our tie downs are more reliable with the addition of sikaflex glue; the same glue used to hold side walls on hung wall units.
- A sealant is also applied around the radius to ensure a tight seal between the tie down and the tuff ply flooring.

VENGEANCE



- | | | |
|---|--|---|
| 1. Aerodynamic painted fiberglass cap | 14. Ultra bright LED strip light | 27. Triple entry steps |
| 2. Spoiler designed cap offers BEST IN CLASS towing | 15. Aluminum rims | 28. Extended drip spouts |
| 3. 21' Power awning w/LED light strip | 16. Radial tires | 29. Rear stabilizer jacks |
| 4. Sony marine grade exterior speakers | 17. Enclosed, triple insulated, underbelly | 30. Entry door lighting |
| 5. Cable, outlet & TV mount for outside entertainment | 18. Solar Prep | 31. Extra large bedroom window |
| 6. Friction hinged entry doors | 19. Back up camera prep | 32. 6 gallon gas/electric DSI quick recovery water heater |
| 7. Extra large entry grab handle | 20. Ultra bright LED rear ramp loading light | |
| 8. 102" wide body | 21. RAM air cargo ventilation system | |
| 9. Electric front landing gear | 22. Walk on radius roof | |
| 10. LED Accent cap lighting | 23. PVC roof material | |
| 11. Battery compartment w/ battery disconnect | 24. 13,500 BTU A/C (15,000 opt) | |
| 12. 6,000lb axles | 25. All-in-one docking station (off door side) | |
| 13. EZ lube bearings | 26. Two 30lb. LP bottles | |



VENGEANCE

- | | |
|-----------------------------------|-------------------------------------|
| 1. Flat screen TV | 14. Ducted heat |
| 2. Hinging TV bracket | 15. Back Lit switches |
| 3. Bluetooth stereo | 16. LED accent lighting |
| 4. Entertainment shelf | 17. Decorative Valances |
| 5. U-shape dinette | 18. Pull down faucet |
| 6. Removable pedestal table | 19. Large under mount sink w/ Cover |
| 7. Collapsible full size bed | 20. Ball bearing drawers |
| 8. Storage drawers | 21. Entertainment center storage |
| 9. 100% LED lighting | 22. Tons of outlets & USB Ports |
| 10. Living room ceiling speakers | 23. Door side kitchen window |
| 11. Extra large slide out windows | 24. Ultra durable linoleum flooring |
| 12. Residential wood blinds | |
| 13. Ducted A/C | |



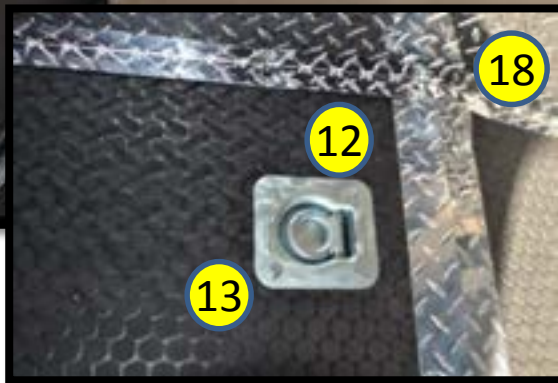
1. 8 cu. Ft. gas/electric refrigerator
2. Raised panel wood refrigerator fronts
3. Triple burner stove
4. Flush mount glass top doubles as splash guard
5. Convection oven/microwave combination
6. Tons of kitchen storage
7. Pull down faucet
8. Extra large sink
9. Extra deep drawers w/ball bearing drawer glides
10. Kitchen window
11. Residential wood blinds
12. 100% LED lighting
13. Steel removable loft ladder
14. Loft bed/storage
15. Loft bed window
16. Loft bed outlet
17. Vapor barrier door to garage
18. Ducted A/C
19. Ducted heat
20. Living room speakers
21. Tons of outlets
22. Friction hinge door

VENGEANCE



1. Overstuffed Happi jac sofas
2. Upgraded hinged sofa system
3. Top Queen Bunk
4. Free standing folding table
5. Beaver tail transition
6. Upgraded ramp patio system
7. Back up camera prep
8. Ultra bright LED loading light
9. Screen Wall/Tent wall
10. Black out snap on window covers
11. Indoor/outdoor carpeting
12. Tuff ply cargo floor

13. Nine 2,500 lb. tie downs screwed and glued
14. Friction hinge door
15. LED lighting
16. Lighted switches
17. RAM air cargo ventilation system
18. 5" diamond plate base boards
19. Cable prep with outlet
20. TV Backer built into the wall (TV not included)
21. Tons of outlets around walls
22. 75" loft height
23. Ramp door bar locks
24. Vapor barrier door into living room
25. Ducted A/C
26. Ducted Heat





1. 75" Ceiling height
2. Hanging closet storage
3. Enclosed cabinet storage above bed
4. Pleated shades over windows
5. Extra large window
6. Outlet on right side of bed
7. Outlet on left side of bed
8. Tons of walk around space
9. LED reading light
10. Decorative head board
11. Under bed storage on struts
12. Bathroom access from bedroom
13. Hard valances over windows
14. Reversible bed spread
15. Cable prep with outlet
16. TV backer built into the wall
17. Ducted A/C
18. Ducted Heat
19. Lighted Switches
20. 60x74 Queen Bed
21. LED lighting

VENGEANCE

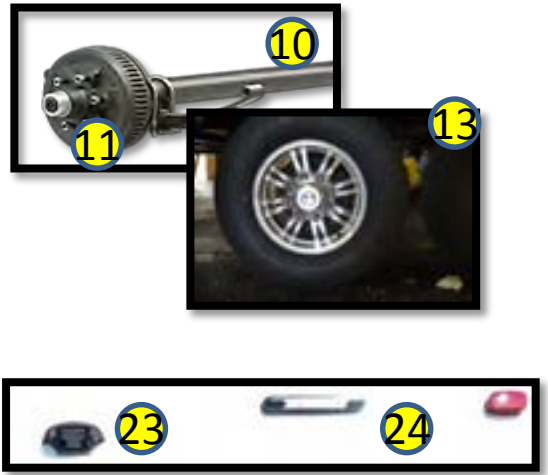
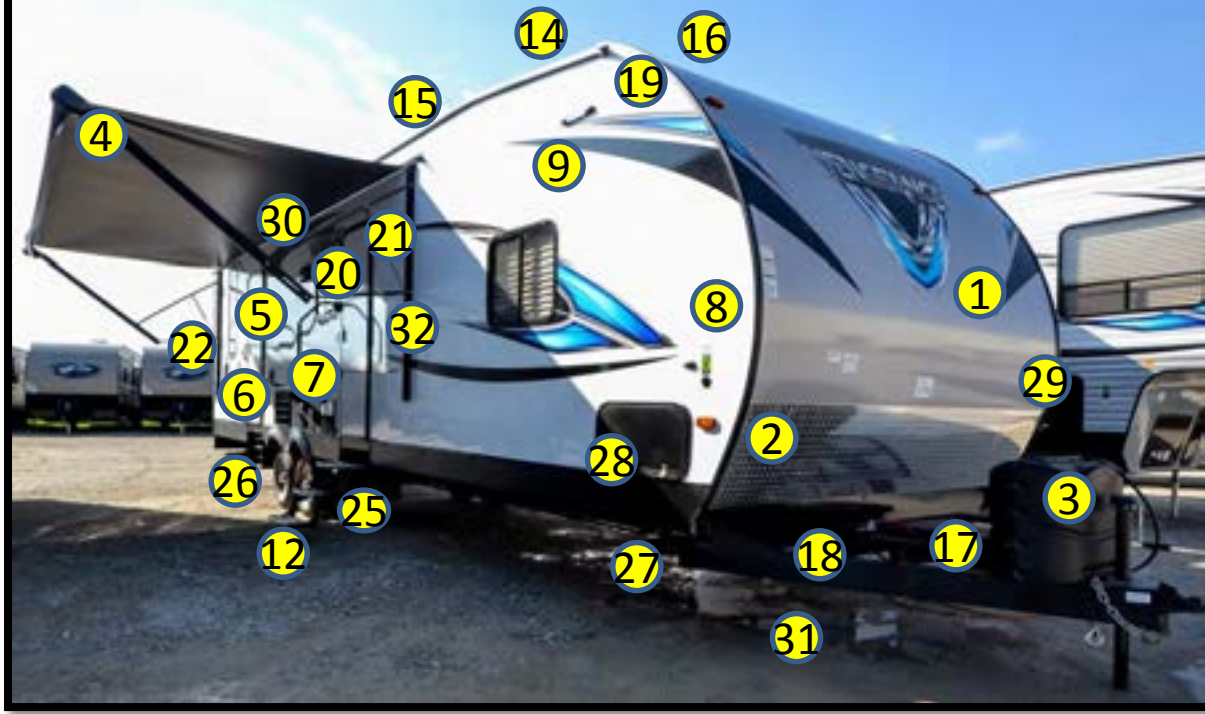
VENGEANCE



1. Neo-angle shower (shown with optional glass enclosure)
2. Shower surround
3. Built in shelves in shower
4. Removable shower head
5. Extra large skylight
6. Medicine cabinet
7. Additional storage cabinet
8. Under sink storage

9. GFI outlet
10. Large sink
11. Foot flush toilet
12. Ducted A/C
13. Ducted heat
14. Entry from hallway opens in to bathroom
15. Entry from bedroom
16. Power fan/ventilation
17. Best in class space for getting ready
18. LED lighting

VENGEANCE



- | | | |
|--|--|---|
| <ol style="list-style-type: none"> 1. Aerodynamic radius metal front 2. Diamond plate front cap rock guard 3. 20lb. LP bottles w/cover 4. 21' Power awning w/LED light strip 5. Sony marine grade exterior speakers 6. Cable and outlet for outside entertainment 7. TV backer for exterior TV 8. Solar prep 9. Ultra bright LED scare light 10. 5,200lb. Axles 11. EZ lube bearings 12. Aluminum rims 13. Radial tires | <ol style="list-style-type: none"> 14. 13,500 BTU A/C 15. Walk on radius roof 16. PVC roof material 17. Generator storage rack on A-frame 18. Dual battery storage rack on A-frame 19. Extended drip spouts 20. Extra large main entry grab handle 21. Friction hinge doors 22. RAM air cargo ventilation system 23. Back up camera prep 24. Ultra bright LED rear ramp loading light 25. Triple entry steps 26. Easy access spare tire | <ol style="list-style-type: none"> 27. Enclosed, triple insulated, underbelly 28. Outside storage 29. All-in-one docking station 30. 102" wide body 31. 6 gallon gas/electric DSI quick recovery water heater 32. Entry door lighting |
|--|--|---|



1. Reclining theater style seating (U-shape dinette in 29V)
2. Flat screen TV
3. Wall mount TV bracket
4. Bluetooth stereo
5. Entertainment shelf for DVD player
6. Storage cabinet near entry
7. Vapor barrier door to garage
8. 100% LED lighting
9. Living room ceiling speakers
10. Extra large slide out windows
11. Residential wood blinds
12. Ducted A/C
13. Ducted heat
14. Lighted switches
15. Tons of kitchen cabinet storage
16. LED accent lighting
17. Decorative hard valances
18. Pull down faucet
19. Large sink
20. Slide out cabinet storage
21. Removable pedestal table
22. Tons of outlets
23. Friction hinge door
24. Door side kitchen window
25. Ultra durable linoleum flooring
26. Huge 83" slide out height

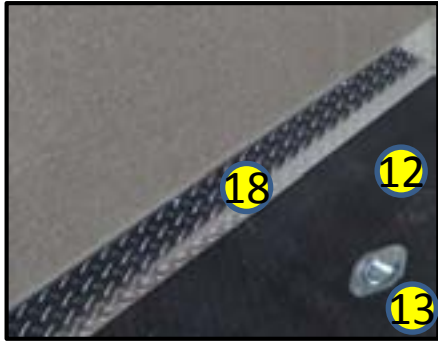
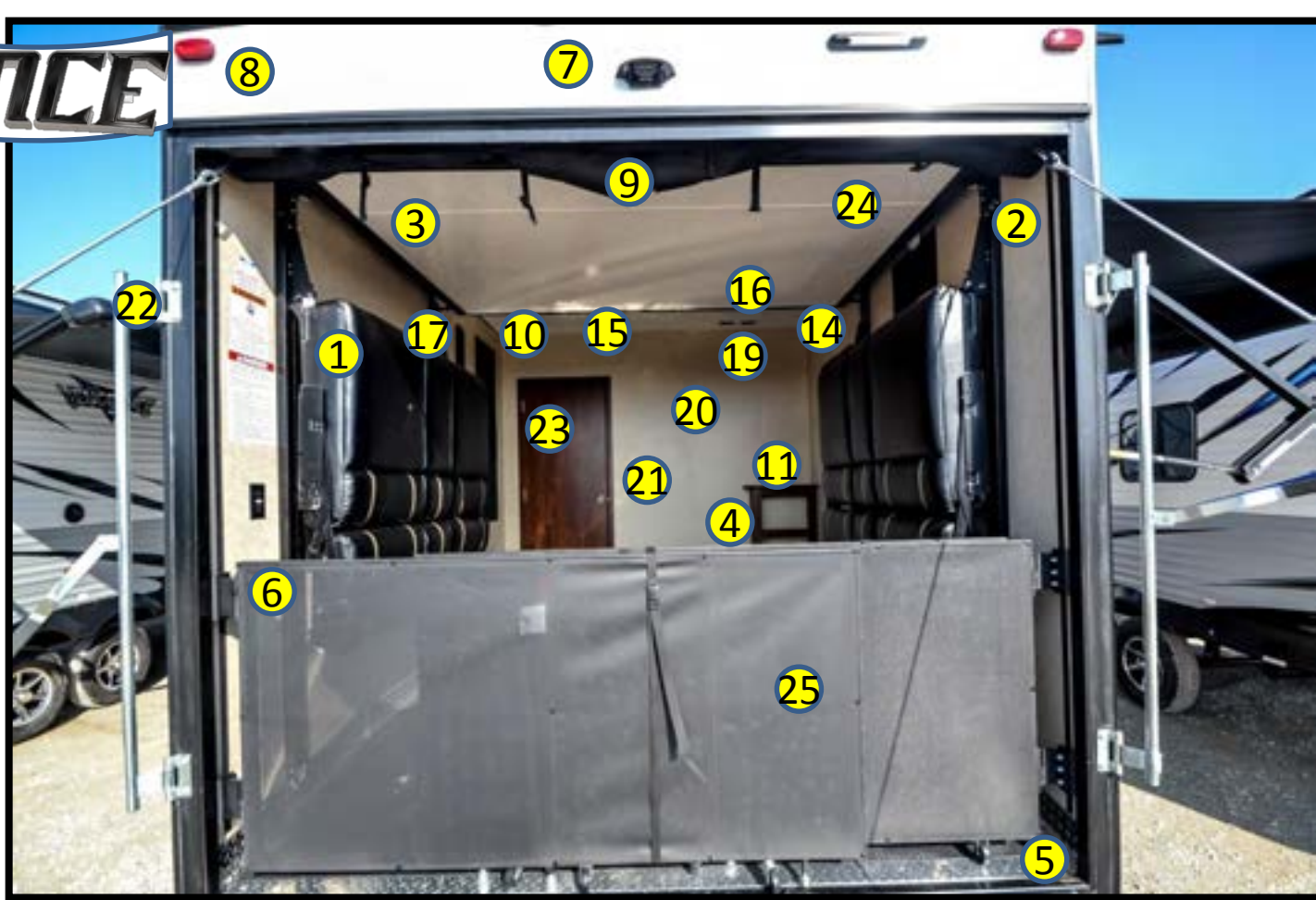




- | | |
|--|-------------------------------|
| 1. 8 cu. Ft. gas/electric refrigerator | 14. Ducted A/C |
| 2. Raised panel wood refer fronts | 15. Ducted heat |
| 3. Triple burner stove | 16. Living room speakers |
| 4. Flush mount glass top doubles as splash guard | 17. Tons of outlets |
| 5. Convection oven/microwave combination | 18. Friction hinge door |
| 6. Tons of kitchen storage | 19. Lighted switches |
| 7. Pull down faucet | 20. LED accent lighting |
| 8. Extra large sink | 21. Huge 83" slide out height |
| 9. Kitchen window | |
| 10. Residential wood blinds | |
| 11. 100% LED lighting | |
| 12. Large counter top | |
| 13. Vapor barrier door to garage | |

VENGEANCE

VENGEANCE



1. Overstuffed Happi jac sofas
2. Hinged happi jac sofa system
3. Top happi jac bed
4. Free standing folding table (not shown)
5. Beaver tail transition
6. Roll out ramp patio system
7. Back up camera prep
8. Ultra bright LED loading light
9. Screen Wall/Tent wall
10. Black out snap on window covers
11. Storage cubbies
12. Tuff ply cargo floor
13. Nine 2,500 lb. tie downs screwed and glued
14. Friction hinge door
15. LED lighting
16. Lighted switches
17. RAM air cargo ventilation system
18. 5" diamond plate base boards
19. Cable prep with outlet
20. TV Backer built into the wall (TV not included)
21. Tons of outlets around walls
22. Hinged ramp securing bars
23. Vapor barrier door into living room
24. Ducted A/C
25. Ducted Heat

VENGEANCE

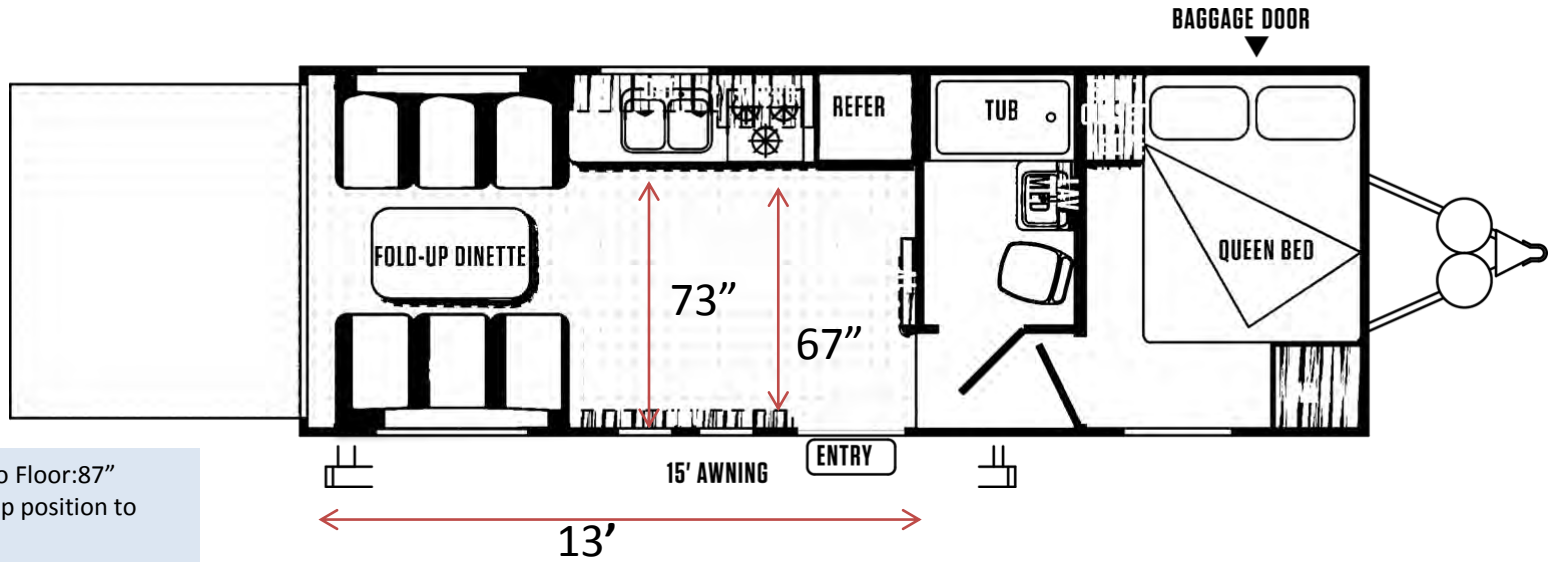


1. 75" Ceiling height
2. Hanging closet storage
3. Enclosed cabinet storage above bed
4. Pleated shades over windows
5. Windows on both sides of the bed
6. Outlet on right side of bed
7. Outlet on left side of bed
8. Tons of walk around space
9. LED lighting
10. Under bed storage on struts
11. Hard valances over windows
12. Reversible bed spread
13. Cable prep with outlet
14. TV backer built into the wall
15. Ducted A/C
16. Ducted Heat
17. Lighted Switches
18. 66x74 Queen bed



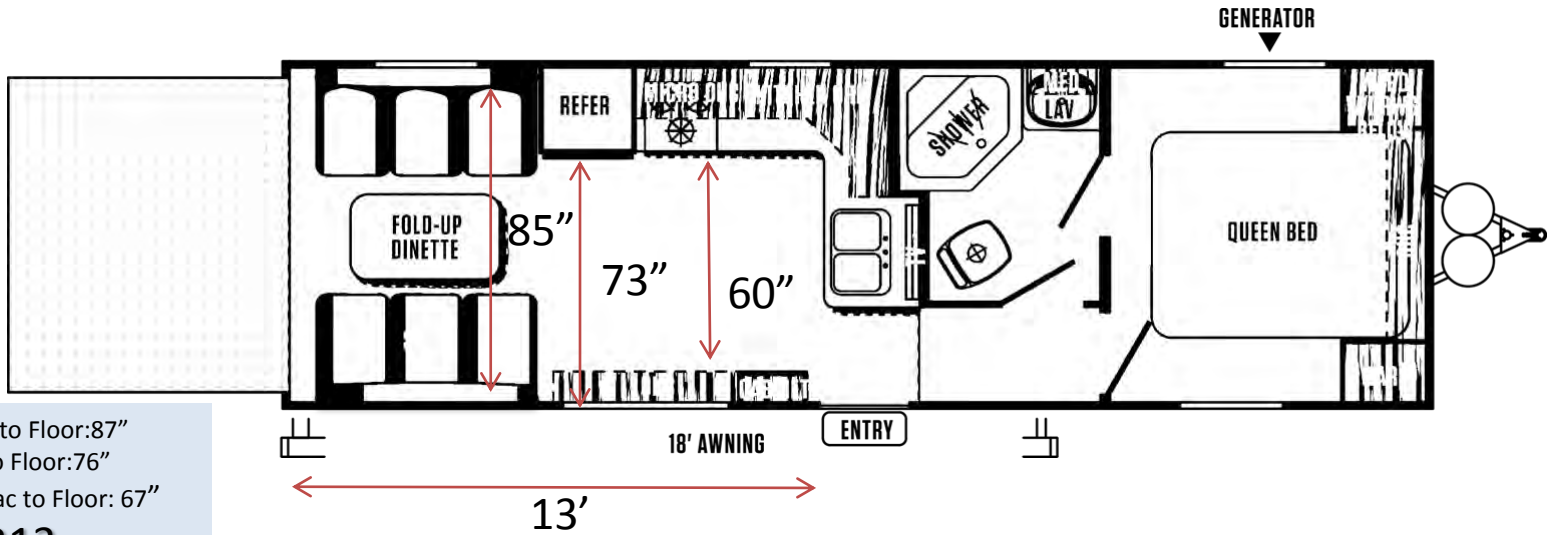
- 1. Neo-angle shower
- 2. Shower surround
- 3. Built in shelves in shower
- 4. Removable shower head
- 5. Extra large skylight
- 6. Medicine cabinet
- 7. Under sink storage
- 8. GFI outlet
- 9. Large sink
- 10. Foot flush toilet
- 11. Ducted A/C
- 12. Ducted heat
- 13. Power fan/ventilation
- 14. Best in class space for getting ready
- 15. LED lighting

VENGEANCE



Height of Ceiling to Floor:87"
 Height of Sofa in up position to Floor:76"

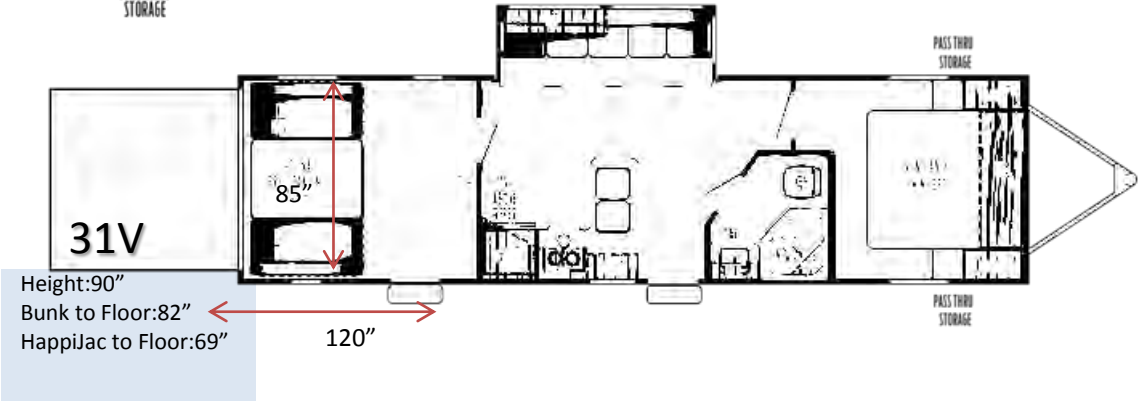
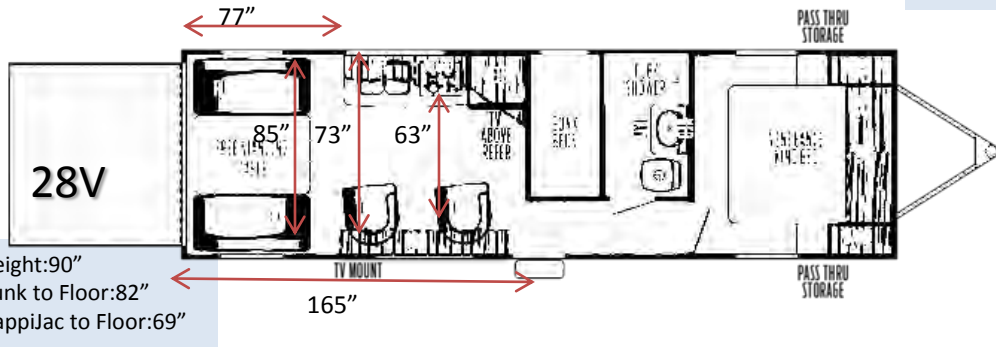
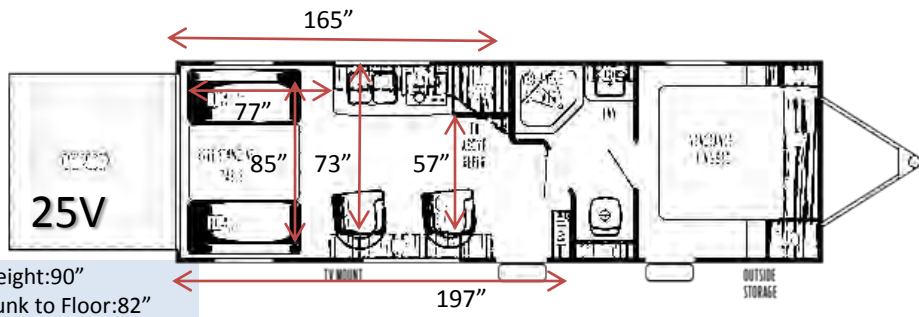
23FB13



Height of Ceiling to Floor:87"
 Height of Bunk to Floor:76"
 Height of HappiJac to Floor: 67"

26FB13

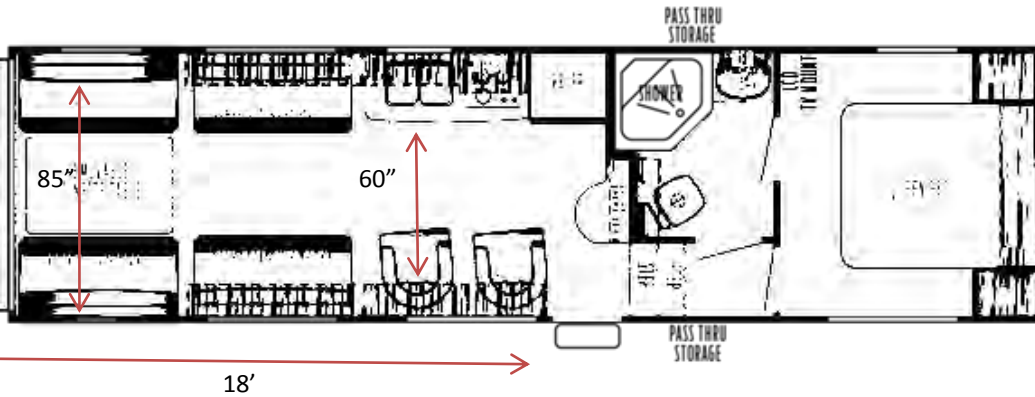
Laminated Travel Trailers



SS Travel Trailers & Fifth Wheels

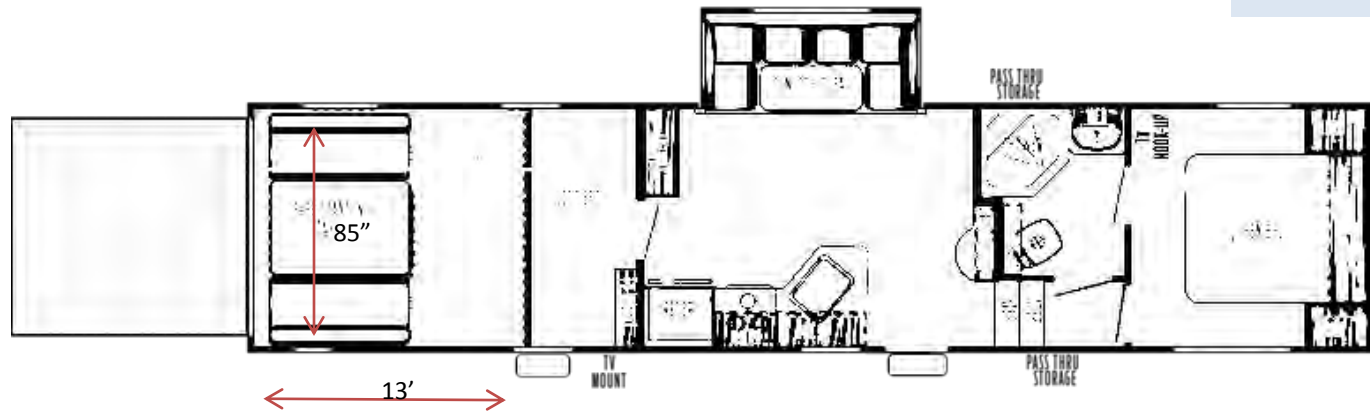
295A18

Height:102"
Bunk to Floor:91"
Happijac to Floor:81"



311A13

Height:102"
Bunk to Floor:91"
Happijac to Floor:81"



314A12

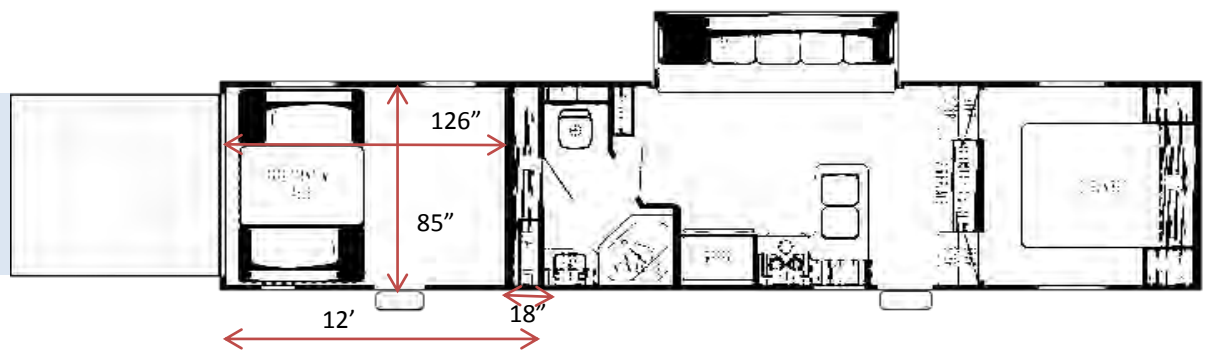
Height:102"
Bunk to Floor:91"
Happijac to Floor:81"



SS Travel Trailers & Fifth Wheels

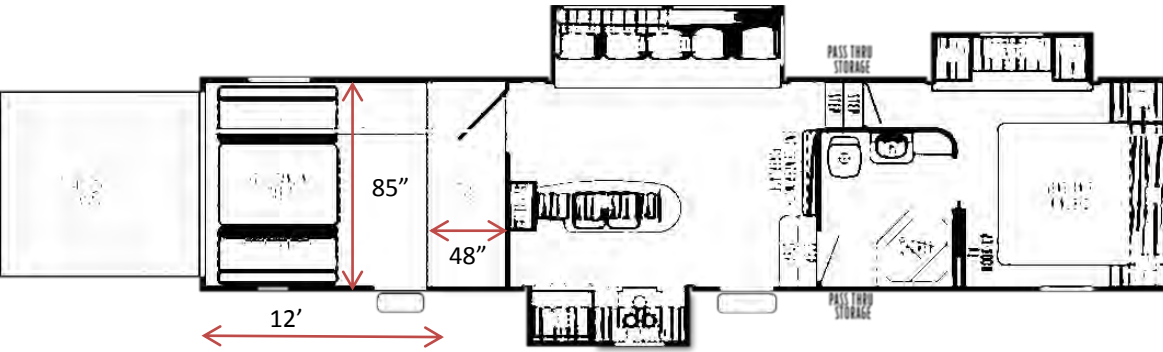
Height of Ceiling to Floor:103"
Height of Bunk to Floor:91"
Height of HappiJac to Floor: 81"

312A12



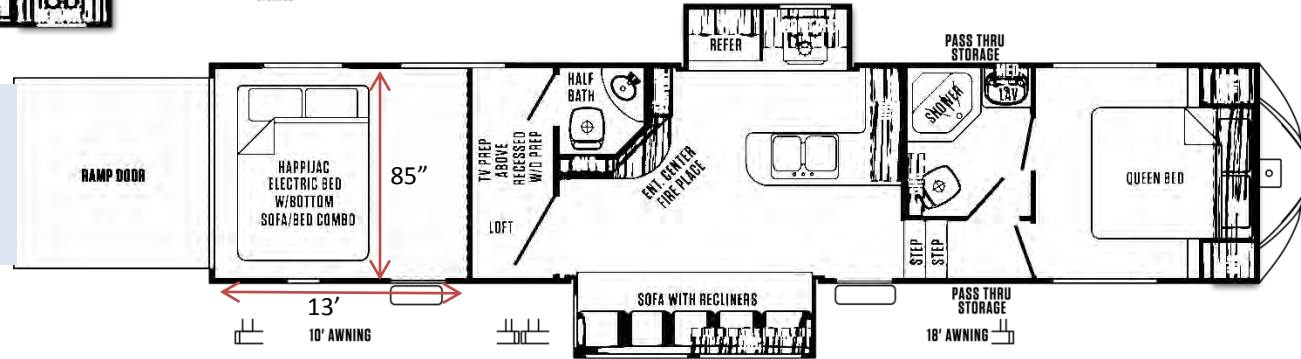
Height of Ceiling to Floor:103"
Height of Bunk to Floor:91"
Height of HappiJac to Floor: 81"

320A



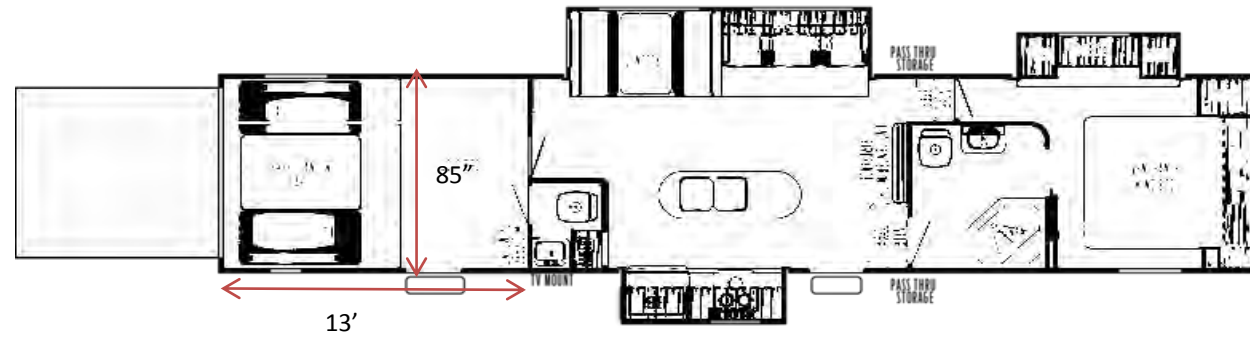
Height of Ceiling to Floor:103"
Height of Bunk to Floor:91"
Height of HappiJac to Floor: 81"

348A13



Height of Ceiling to Floor:103"
Height of Bunk to Floor:91"
Height of HappiJac to Floor: 81"

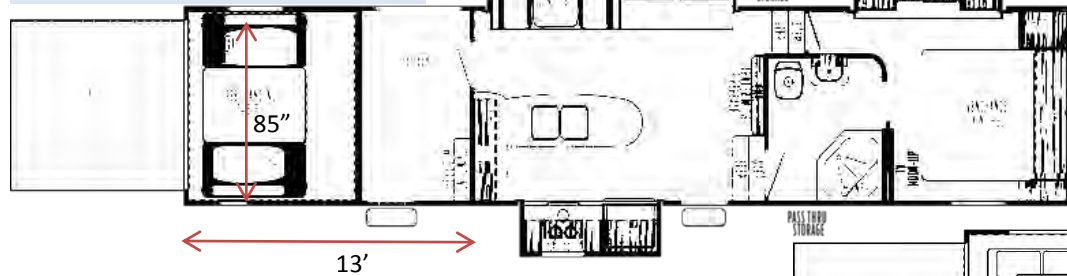
377V



Vengeance Fifth Wheels

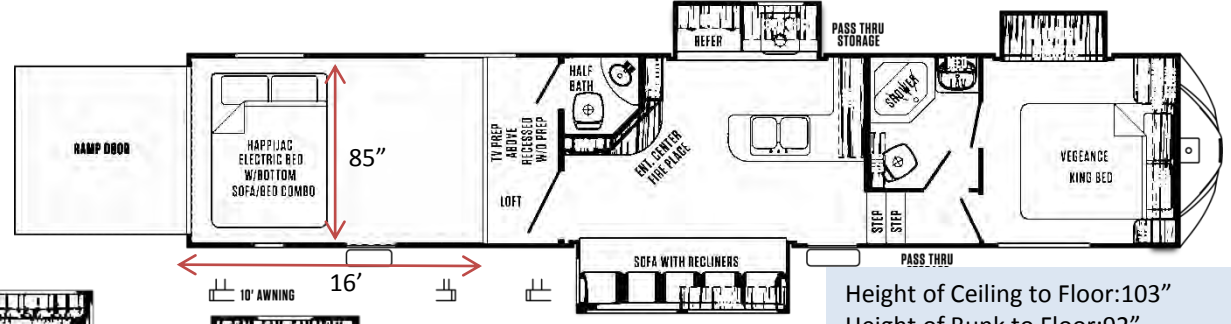
Height of Ceiling to Floor:103"
 Height of Bunk to Floor:91"
 Height of HappiJac to Floor: 81"

394V13



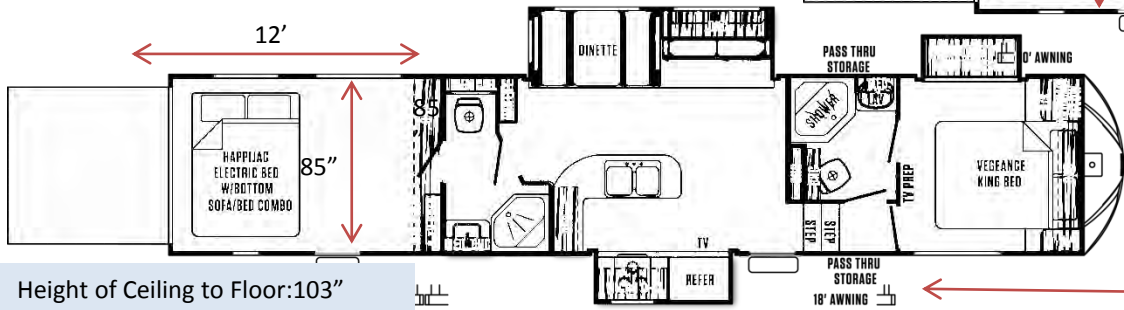
Height of Ceiling to Floor:103"
 Height of Bunk to Floor:92"
 Height of HappiJac to Floor: 86"

388V16



Height of Ceiling to Floor:103"
 Height of Bunk to Floor:91"
 Height of HappiJac to Floor: 81"

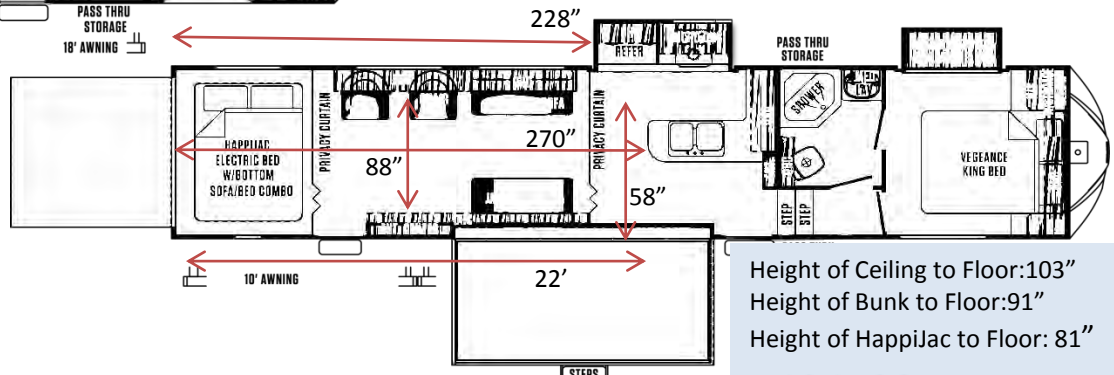
420V12



Height of Ceiling to Floor:103"
 Height of Bunk to Floor:91"
 Height of HappiJac to Floor: 81"

422V12-6

Height of Ceiling to Floor:103"
 Height of Bunk to Floor:91"
 Height of HappiJac to Floor: 81"

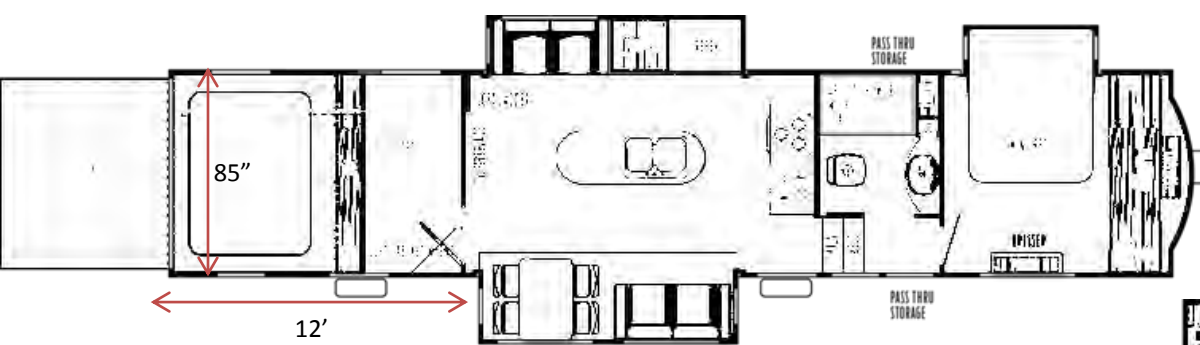


Height of Ceiling to Floor:103"
 Height of Bunk to Floor:91"
 Height of HappiJac to Floor: 81"

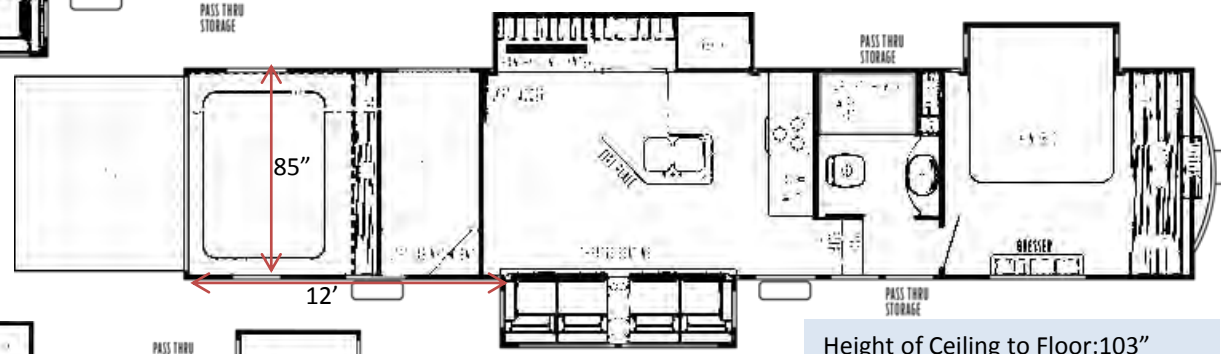
424v22

Vengeance Fifth Wheels

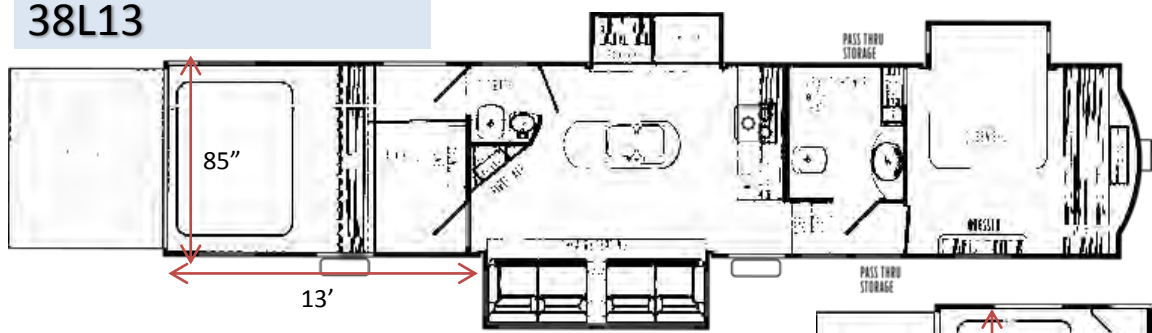
STEPS
 OPTIONAL



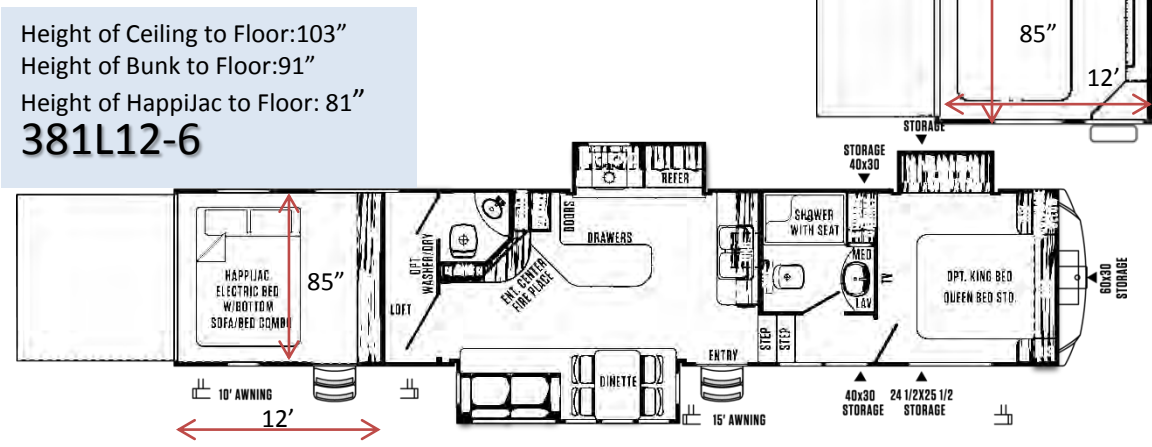
Height of Ceiling to Floor:103"
 Height of Bunk to Floor:91"
 Height of HappiJac to Floor: 81"
38D12



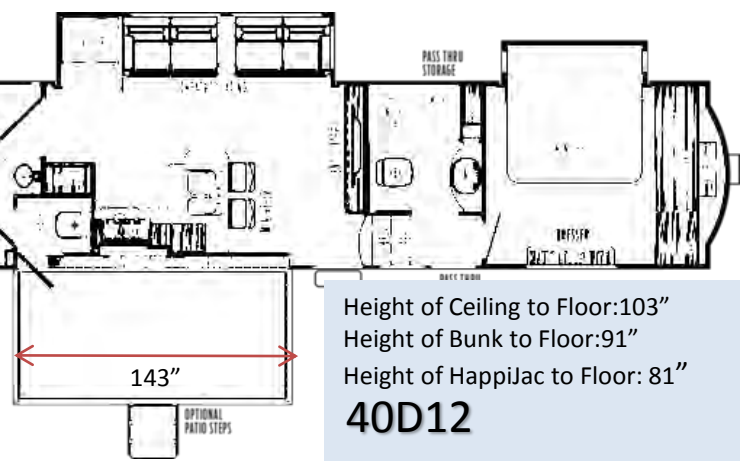
Height of Ceiling to Floor:103"
 Height of Bunk to Floor:91"
 Height of HappiJac to Floor: 81"
38L13



Height of Ceiling to Floor:103"
 Height of Bunk to Floor:91"
 Height of HappiJac to Floor: 81"
39R12



Height of Ceiling to Floor:103"
 Height of Bunk to Floor:91"
 Height of HappiJac to Floor: 81"
381L12-6



Height of Ceiling to Floor:103"
 Height of Bunk to Floor:91"
 Height of HappiJac to Floor: 81"
40D12

Vengeance Touring Edition