

EST. 1974

FLAGSTAFF

WE'RE YOUR LIGHT-WEIGHT SPECIALIST

FW

FIFTH WHEELS



FLAGSTAFF FIFTH WHEELS



SUPER LITE & CLASSIC FIFTH WHEELS

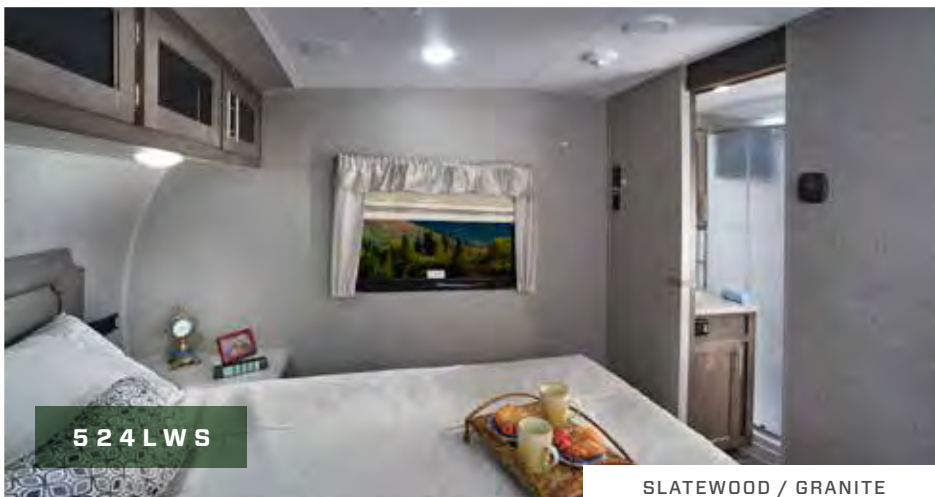
FLAGSTAFF

Super Lite Fifth Wheels

So you didn't think you could pull a fifth wheel? The Flagstaff Super Lite Fifth Wheel models provide light weight alternatives with a variety of floor plans, features and options for owners of 1/2 ton pick up trucks. Equipped with a standard LCI Turning Point hitch, you can tow with almost any size truck bed. Take a close look and you will see that our Super Lite fifth wheels have been custom designed with the best in styling and amenities while keeping your towing needs in mind.



SLATEWOOD / GRANITE



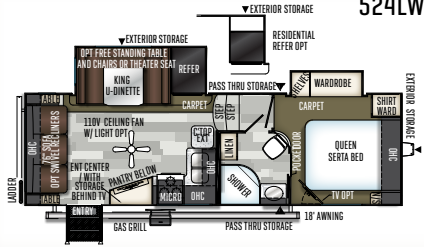
SLATEWOOD / GRANITE



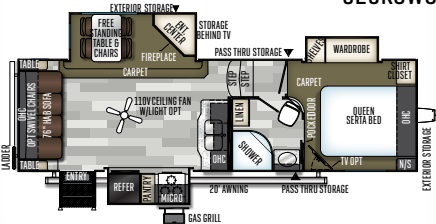
Standard Champagne Exterior

Optional White Exterior

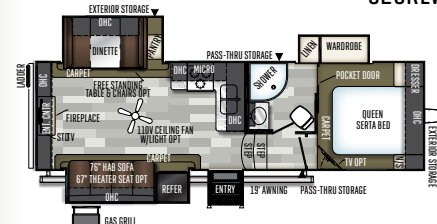
524LWS



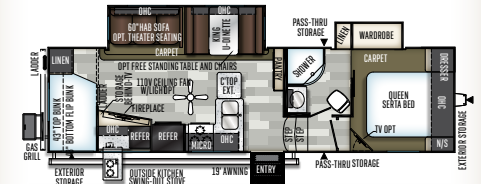
526KWS



526RLWS



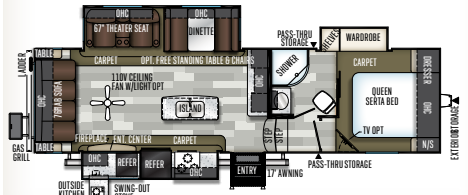
527BHS



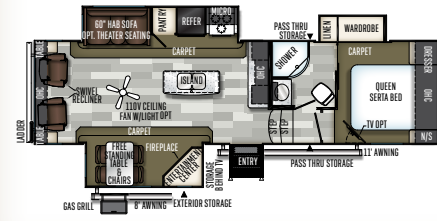
528RKS



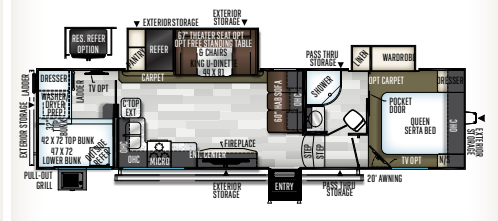
528CKWS



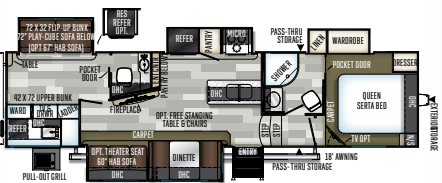
528IKWS



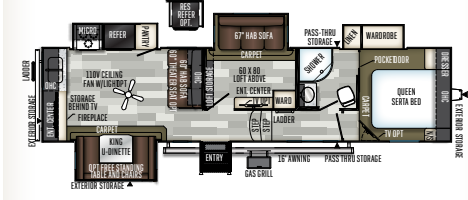
529BH



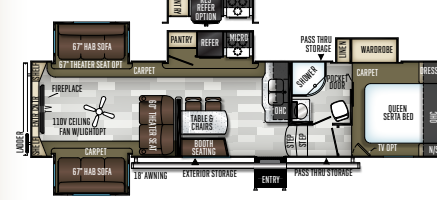
529RBS



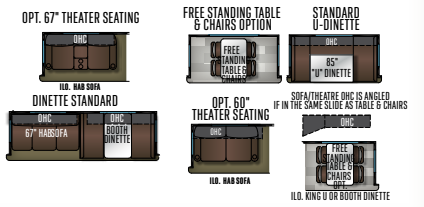
529MBS



529RLKS



SLIDE OPTIONS



MODEL NUMBER	524LWS	526KWS	526RLWS	527BHS	528RKS	528CKWS	528IKWS	529BH	529RBS	529MBS	529RLKS
UNLOADED VEHICLE WEIGHT*	7149	7430	7766	8472	8163	8694	8709	8964	9839	9324	9402
BASE DRY HITCH WEIGHT	1165	1130	1263	1280	1265	1365	1375	1305	1450	1435	1456
BASE DRY AXLE WEIGHT	5925	6241	6444	7133	6839	7270	7275	7600	8330	7830	7887
CARGO CAPACITY	2016	1700	1497	1608	1902	2671	2666	2341	1611	2111	2054
LENGTH (HITCH TO BUMPER)	28' 5"	29'10"	29'10"	32' 5"	32' 5"	32' 5"	32' 5"	36'	36'	36'	36'
WIDTH	96"	96"	96"	96"	96"	96"	96"	96"	96"	96"	96"
HEIGHT (W/ AC)	156"	156"	156"	156"	156"	156"	156"	156"	156"	156"	156"
FRESH WATER CAPACITY	60 gal	60 gal	60 gal	60 gal	60 gal	60 gal	60 gal	60 gal	60 gal	60 gal	60 gal
GRAY WATER CAPACITY	45 gal	45 gal	45 gal	90 gal	90 gal	75 gal	90 gal	90 gal	108 gal	90 gal	90 gal
BLACK WATER CAPACITY	45 gal	45 gal	45 gal	45 gal	45 gal	45 gal	45 gal	45 gal	90 gal	45 gal	45 gal

The Unloaded Vehicle Weight (UWV) listed represents the weight of one trailer with that model's standard equipment including the content of specified option packages. * See back cover for further specification definitions.



8529FLS

AMERICAN MAPLE / TOPAZ



8529FLS



8529FLS

FLAGSTAFF

Classic

BY FLAGSTAFF

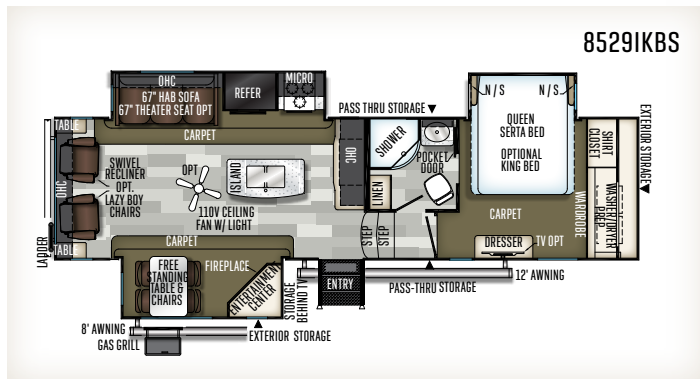
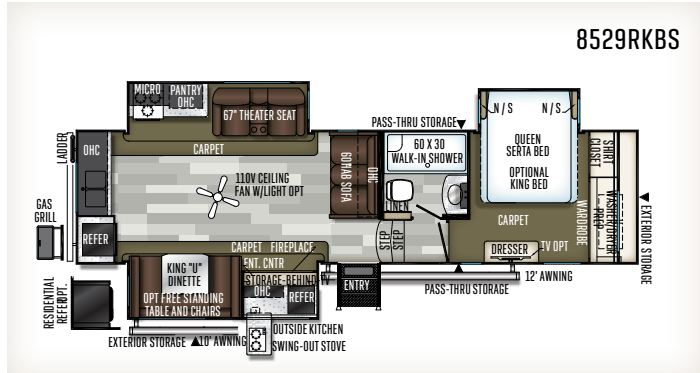
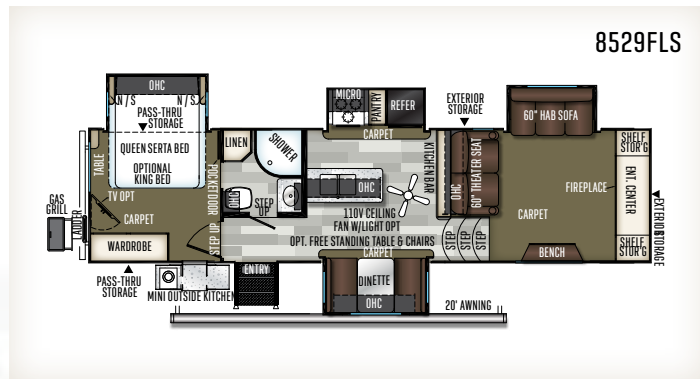
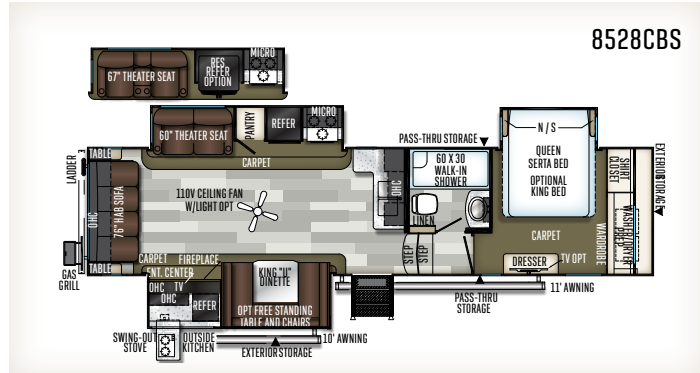
Full size comforts in a light weight Fifth Wheel. The ample counter top space, large cabinets and plush furniture bring the feeling of home to life on the road. The Flagstaff Classic makes camping a memorable experience. All Flagstaff Classic Fifth Wheels come standard with the LCI Turning Point Pin Box allowing you to tow with almost any size truck bed.



OPTIONAL WHITE EXTERIOR



STANDARD CHAMPAGNE EXTERIOR



SLIDE OPTIONS

OPT. 67" THEATER SEATING



I.L.O. HAB SOFA

DINETTE STANDARD



FREE STANDING TABLE & CHAIRS OPTION



OPT. 60" THEATER SEATING



I.L.O. HAB SOFA



I.L.O. KING U OR BOUTH DINETTE

KING "U" DINETTE STANDARD



LAYOUT MAY BE MIRRORED DEPENDING ON THE MODEL

MODEL NUMBER	8528CBS	8529RKBS	8529FLS	8529IKBS
UNLOADED VEHICLE WEIGHT*	10072	9516	9379	9505
BASE DRY HITCH WEIGHT	1574	1637	1550	1581
BASE DRY AXLE WEIGHT	8439	7820	7770	7865
CARGO CAPACITY	1502	2121	2171	2076
LENGTH (HITCH TO BUMPER)	36' 7"	34' 11"	34' 11"	34' 1"
WIDTH	96"	96"	96"	96"
HEIGHT (W/ AC)	156"	156"	156"	156"
FRESH WATER CAPACITY	60 gal	60 gal	58 gal	60 gal
GRAY WATER CAPACITY	75 gal	90 gal	90 gal	90 gal
BLACK WATER CAPACITY	45 gal	45 gal	45 gal	45 gal

The Unloaded Vehicle Weight (UVW) listed represents the weight of one trailer with that model's standard equipment including the content of specified option packages. * See back cover for further specification definitions.

Popular Features

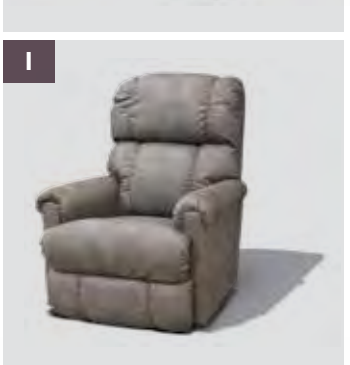
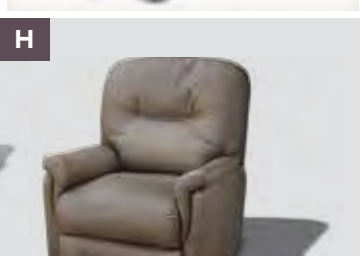
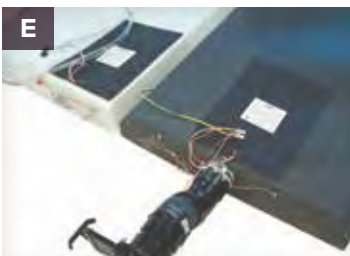
Features that make your trips feel like home. Flagstaff takes careful consideration to each feature added into each product produced. Every detail is considered ranging from extra sleeping room, storage, comfort and convenience. Take time to review the features listed below and match them with the competition's products. We're confident you'll discover Flagstaff is the superior choice.



STANDARD CHAMPAGNE EXTERIOR



- A** Power Awning with adjustable rain dump and LED lighting (Std.)
- B** Large LCD TV and entertainment center with "Bluetooth" technology.
- C** Radius glass door shower (N/A Models with tub bases)
- D** Solid surface counter top with under mount sink
- E** Water Filtration System (Std. Opt.)
- F** Nautilus Water Management System (Std.)
- G** Deluxe tri-fold sleeper sofa w/ comfortable, easy set-up bed (Per floorplan)



A Rear camera prep. (Std. all models) The Furrion observation camera system with digital wireless technology is sold separately.

B Forest River switch center (Std.)

C WIFI Sky 4 WIFI Booster with LTE Internet connectivity. (Std.)

D The LCI Turning Point pin box provides:
 1) Full 90 degree worry free turning,
 2) Eliminates the need for a slider hitch
 3) Greatly enhances maneuverability (Std.)

E Heated holding tanks with 12 volt heat pads secured to the bottom. No need to use the furnace to heat tanks when traveling. (Opt.)

F Solar panel prep (Std. All Models) The Zamp 40 amp. portable solar panel shown is sold separately.

G Tri-fold sofa. Fabric matched to decor.

H Swivel Rocker Recliner where applicable. Fabric to match. (Per floorplan)

I La-Z-Boy swivel recliner where applicable. Fabric to match decor. (Opt.)

J 67" Heated theatre seating per plan where available. Fabric matched to decor. (Per floorplan)

GRANITE

SOFA, CHAIRS, DINETTE CUSHIONS
 (LEATHER APPEARANCE) (LEVI CHOCOLATE)

ACCENTS (TYPHOON PEBBLE)



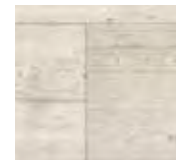
CURTAINS (DELORES GRAPHITE)



SLATEWOOD
 STANDARD



AMERICAN MAPLE
 OPTIONAL



STANDARD
 FLOOR COVERING



OPTIONAL
 FLOOR COVERING



CARPET

TOPAZ

SOFA, CHAIRS, DINETTE CUSHIONS
 (LEATHER APPEARANCE) (OMBRE PEBBLE)

ACCENTS (OZZI MICA)



CURTAINS (TYPHOON PEBBLE)

ACCENTS (OMBRE SEAL)

Quality Construction

The details are what make all the difference. Flagstaff takes pride in constructing the very best products possible in each price point. From our entry level units to our top of the line products, no short cuts are taken to achieve excellence. From the all-steel I-beams to the residential interior amenities to the vacuum-bonded exteriors, Flagstaff products are quality built from the ground-up.



- A** Glued and screwed wood cabinetry
- B** Aluminum dinette frames for added strength and weight savings
- C** 5/8" tongue and groove plywood glued and screwed to aluminum framing.
- D** Extra large dinette storage drawers and full extension metal drawer guides in the kitchen
- E** Dexter Torflex Axles:
 - Independent wheel suspension and self-damping action
 - Rubber cushioning eliminates metal-to-metal contact.
 - Forged torsion arm for maximum strength
- Models are also equipped with E-Z Lube® System and Nev-R-Adjust® Brakes.
- F** Standard under belly to protect trailer components as well as increasing aerodynamics
- G** Aluminum Frame Construction with high gloss fiberglass exterior and deluxe graphics

ROOF CONSTRUCTION



Vacuum-bonded radius roof with vaulted ceiling providing Ultraior insulation and more interior height.



4" thick roof with built in insulated A/C ducts



Built strong to enable you to conveniently perform periodic roof maintenance.

WALL STRENGTH



Structurally engineered materials makes our vacuum-bonded walls some of the strongest in the industry.

VACUUM-BONDED LAMINATED CONSTRUCTION



Flagstaff is one of only a few manufacturers with six sided aluminum framing. Vacuum bonded walls and roof to ensure a well-insulated, light weight, strong structural trailer.

Flagstaff Super Lite and Classic

STANDARDS & OPTIONS

MODELS	SL	C	MODELS	SL	C	MODELS	SL	C
STANDARD PACKAGES INCLUDE:		PKG. A						
6 Sided Aluminum Cage Construction	S	S	Residential Serta Mattress	S	S	Solid Wood Cabinet Doors and Drawers	S	S
Vacuum Laminated 1 Piece Roof and Walls	S	S	Outside Speakers	S	S	Upgraded Cabinetry Hardware	S	S
5/8" Plywood Tongue and Groove Sub Floor	S	S	LCD TV With Upgraded Sound Bar Speaker System and			Engineered Mold and Mildew Resistant Floor Covering	S	S
Aluminum Bed and Dinette Base	S	S	Multi-directional Antenna	S	S	Bedroom Carpet	S	S
Fiberglass Exterior with High Gloss Finish	S	S	Multi Zone Stereo w/ DVD/CD/Blu Ray/ AM&FM, Plus			Step Mount Vacuum Cleaner	--	S
High Gloss Front Cap	S	S	Bluetooth Control and MP3 Player Hook up (Blu Ray N/A on SL)	--	S	35,000 BTU Floor Ducted Furnace	S	S
Enclosed Underbelly	S	S	Touch Button Control Pad w/ Bluetooth App Control	--	S	15,000 BTU Ducted Roof Air	0	0
Thermostatically Controlled Heated Holding Tanks	S	S	WiFi Ranger Sky 4 (LTE ready to create your own WiFi when WiFi			2nd Roof A/C w/ Chill Chaser Heat Strip in Bedroom with		
Tinted Bonded Frameless Windows	S	S	is not available. SIM Card and LTE module are sold separately)	S	S	50 Amp Service and Digital Dual Thermostat	0	0
Power Awning w/ Adjustable Rain Dump and LED Light Strip	S	S	Torsion Axle, Rubber-Ryde Suspension	S	S	50 Amp Service with 2nd A/C prep	S	S
LCI *Turning Point Pin Box Hitch	S	S	Polished Alloy Wheels	S	S	Fireplace, Where Available	S	S
Power Landing Legs & Stabilizer Jacks	S	S	Spare Tire Carrier & Cover	S	S	110V Ceiling Fan	0	0
13,500 BTU Ducted A/C with 50 Amp Service and Prepped for 2nd A/C	S	S	Nitro Filled Tires	S	S	Carbon Monoxide Detector	S	S
Upgraded 22" Gas Oven	S	S	Slam Latch Baggage Doors and Magnetic Door Holds	S	S	12 Volt Power Plug With USB Charging Port	S	S
Microwave Oven	S	S	Rear Observation Camera Prep w/ Molded Mounting Plate	S	S	CSA (Canadian Standards)	0	0
Recessed Cooktop and Oven w/ Flush Mount Cover	S	S	Solar Panel Prep	S	S	Battery Disconnect Switch	S	S
Hidden Hinge Cabinet Doors	--	S	Rear Ladder	S	S	55 Amp Converter With Charger	S	S
Residential Full Extension Metal Soft Close Drawer Guides	--	S	Black Tank Flush	S	S	Flush Mount Ceiling LED 12 Volt Interior Lighting w/		
Extra Large Double Door 2 Way Refrigerator	S	S*	MORryde Strut Assist Fold-Out Steps	S	S	Multiple Switches	S	S
Solid Surface Kitchen Countertops	S	S				Interior Floor Light by Entrance Door	S	S
Kitchen Backsplash	S	S	INTERIOR FEATURES			Deluxe Tri-Fold Sleeper Sofa	S*	S*
Flush Mount Stainless Steel Sinks With "High Rise" Faucet Lift-Off	S	S	Slatewood Interior	S	S	Push Back Swivel Rocker Recliner (Std. 528IKWS, 8529IKBS)	S*	S*
6 Gallon Quick Recovery Auto Ignition Gas/Electric Water Heater	S	S	American Maple Interior	0	0	Lazy Boy Swivel Rocker Recliner (8529IKBS Only)	--	0*
Shower Miser Water Saver System	S	S	Decorative Slide Out Fascia	S	S	Theatre Seating	0*	S*
360 Siphon Black Water Venting	S	S	Decorative Cove Trim Along Ceiling and Overhead Cabinets	S	S	Theater Seat ILO Sofa	0*	0*
			Screwed and Glued Cabinetry	S	S	Deluxe Interior Window Treatment	S	S

STANDARDS & OPTIONS ARE SUBJECT TO CHANGE.



MODELS	SL	C
Day/Night Pull Shade	S	S
Day/Night Roller Shades	--	O
Stainless Steel Appliances	O*	O*
9 Cubic Ft. Gas / Electric Refrigerator	--	S*
12 Cubic Foot Auto Gas/Electric Refrigerator W/ Stainless Steel Panels (8529IKBS)	--	S*
8 Cubic Foot Gas/Electric Refrigerator	S	--
22 Cubic Foot Residential Refrigerator w/ Invertor	O*	O*
12 Cubic Foot Residential Refrigerator w/ Invertor	O*	O*
Decorative Wood Refrigerator Panels	O*	O*
Three Burner High Output Gas Range with Glass Top Cover	S	S
Water-Pur Filtration System	S	S
Counter Top Extension (Per floorplan)	S	S*
Trash Can in Kitchen (Most Models)	--	S
Bathroom Skylight	S	S
Interior Gas and Electric Switches	S	S
Water Heater By-Pass Kit	S	S
Residential Style Porcelain Bowl Foot Flush Toilet	--	S
Maxxair® Ventilation Fan and Vent Cover	S	S
Extra Maxxair® Ventilation and Vent Cover	O	O
King Bed Slide	--	O
Washer/Dryer Prep (528RKS, 529BH, 8528CBS, 8529IKBS, 8529RKBS Only)	S*	S*
Larger 76" Entry Doors	S	S

MODELS	SL	C
EXTERIOR FEATURES		
Fully Aluminum Frame (Floor, Sidewall, & Roof)	S	S
Insulation Factors R-7 Side Wall, R-12 Floor and R-14 Roof	S	S
Radius Roof With Vaulted Interior Ceilings	S	S
One Piece Seamless Roofing Membrane	S	S
TV Antenna w/ Cable & Satellite Hook-Up	S	S
Bike Rack Ladder Attachment	O	O
Rear Bike Deck (200 lbs. Max Load)	O	O
Laminated Champagne Color Fiberglass Sidewalls	S	S
Laminated White Fiberglass Sidewalls	O	O
Electric Slide-Out(s)	S	S
Decorative Frame Skirting	S	S
Distinctive Black Exterior Trim	S	S
Power Awning With Adjustable Rain Dump and LED Lighting	S	S
Shielded Awning Covers	--	O
Awning Slide Topper	O	O
30" Primary Entrance Door	S	S
Friction Hinge Entrance Door	S	S
Lighted Entry Step	S	S
Large Grab Handles	S	S
Tinted Bonded Frameless Windows	S	S
Thermo Pane Window Upgrade	O	O
Outside RVQ Grill w/ LP Hookup and Work Table	S	S
Outside Shower	S	S

MODELS	SL	C
Front Outside "Trunk" Storage Separated From Heated Pass Thru Storage Compartment	S	S
Outside Antifreeze Inlet for Convenient Winterizing	S	S
Slam Latches on Most Exterior Storage Doors	S	S
Magnetic Storage Door Latches	S	S
Two 30 lb Gas Bottles	S	S
Enclosed Gas Bottles w/ Storage Door Access	S	S
Surface Coated Steel I-Beam Frame	S	S
Power Front Jack	S	S
4.0 Auto Leveling Jacks	O	O
Easy Lube Axles & Never Adjust Brakes	S	S
15" Tires	S	S

SL = SUPER LITE FIFTH WHEELS, C = CLASSIC FIFTH WHEELS, S = STANDARD, O = OPTIONAL, -- NOT AVAILABLE, * = SELECTED MODELS

Look for our other popular lines of Flagstaff camping trailers.



FLAGSTAFF E-PRO



FLAGSTAFF TENT CAMPERS



FLAGSTAFF TRAVEL TRAILERS

FREE MEMBERSHIP
to Forest River Owners' Group

www.forestriverfrog.com



PRE-DELIVERY INSPECTION FACILITY

20,000 square feet of quality assurance. The bare essentials for a premium product. This state-of-the-art facility gives immediate daily feedback to production for quality assurance in every unit built.

SPECIFICATION DEFINITIONS

GVWR (Gross Vehicle Weight Rating) - is the maximum permissible weight of the unit when fully loaded. It includes all weights, inclusive of all fluids, cargo, optional equipment and accessories. For safety and product performance do NOT exceed the GVWR.

GAWR (Gross Axle Weight Rating) - is the maximum permissible weight, including cargo, fluids, optional equipment and accessories that can be safely supported by a combination of all axles.

UVW (Unloaded Vehicle Weight)* - is the typical weight of the unit as manufactured at the factory. It includes all weight at the unit's axle(s) and tongue or pin and LP Gas. The UVW does not include cargo, fresh potable water, additional optional equipment or dealer installed accessories.

*Estimated average based on standard build optional equipment.

CCC (Cargo Carrying Capacity)** - is the amount of weight available for fresh potable water, cargo, additional optional equipment and accessories. CCC is equal to GVWR minus UVW. Available CCC should accommodate fresh potable water (8.3 lbs per gallon). Before filling the fresh water tank, empty the black and gray tanks to provide for more cargo capacity.

** Estimated average based on standard build optional equipment

Each Forest River RV is weighed at the manufacturing facility prior to shipping. A label identifying the unloaded vehicle weight of the actual unit and the cargo carrying capacity is applied to every Forest River RV prior to leaving our facilities.

The load capacity of your unit is designated by weight, not by volume, so you cannot necessarily use all available space when loading your unit.

Flagstaff Warranty. Our Promise.

FOR DETAILS ON FLAGSTAFF'S COMPLETE WARRANTY PROGRAM, SEE YOUR FLAGSTAFF DEALER. When it comes to backing products with the same quality and commitment it does when it begins the manufacturing process, the only name you have to remember when you're looking for a recreational vehicle is Flagstaff. Flagstaff offers the following additional limited warranties to the original purchasers. Consult written warranty for details.

- 1. Twelve-year vinyl roof warranty, 2. Two-year fiberglass warranty, 3. Ten-year Torflex® axle warranty, 4. One-year bumper to bumper warranty



Learn More
Scan this barcode using a QR Reader on your smart phone to learn more about Forest River.



A Berkshire Hathaway company.

201 WEST ELM MILLERSBURG, IN 46543 WWW.FORESTRIVERINC.COM/FLAGSTAFF 574.642.2640

CUSTOMER SATISFACTION



YOUR FLAGSTAFF DEALER

www.ForestRiverBuyLocal.com

All information contained in this brochure is believed to be accurate at the time of publication. However, during the model year, it may be necessary to make revisions and Forest River, Inc., reserves the right to make all such changes without notice, including prices, colors, materials, equipment and specifications as well as the addition of new models and the discontinuance of models shown in this brochure. Therefore, please consult with your Forest River dealer and confirm the existence of any materials, design or specifications that are material to your purchase decision. Litho. U.S.A FOR 1582 W: 2018.12.01

**24/7 EMERGENCY
ROADSIDE ASSISTANCE
WITH VEHICLE PURCHASE***

- | | |
|-----------------|-------------------------|
| TOWING | WINCH-OUT |
| JUMP-STARTS | MOBILE MECHANIC |
| TIRE CHANGES | TECHNICAL |
| FLUID DELIVERY | SUPPORT |
| LOCKOUT SERVICE | DEALER LOCATOR SERVICES |



*VALID FOR 1 YEAR FROM DATE OF PURCHASE