

CEDAR CREEK HATHAWAY FIFTH WHEELS



Cedar Creek

HATHAWAY EDITION



**EXTENDED STAY
APPROVED**

The Smart Choice for the Experienced RV'er





Cedar Creek

HATHAWAY EDITION

THE SMART CHOICE-

Experienced RV'ers know what they want. Cedar Creek is dedicated to helping people enjoy the outdoors by building better quality recreational vehicles. With 20 years in the RV industry, Cedar Creek is truly considered

one of the best built products in the marketplace. Many of our owners are enjoying their second and third units. See for yourself why Cedar Creek is the smart choice for the experienced RV'er.

KITCHEN FEATURES:

Anything but basic - Cedar Creek's modern luxury kitchens are fit for a gourmet chef with durable countertops, spacious islands and residential styling.

- Overhead LED Edison lighting above the island and dining table
- Decorative, backlit embossed ceiling panel over the island
- Easy-to-clean, one-piece backsplash
- Stainless steel 30" microwave with outside vent
- Furrion® RV Chef's Collection includes a 3-burner gas cooktop, a large gas oven with LED knobs, pulse igniter and interior halogen lighting to view what's cooking
- Removable silverware organizer
- Insignia 18 Cu. ft. stainless steel, residential refrigerator backed by Best Buy® and the Geek Squad™ with a dedicated battery inverter
- Self-closing kitchen drawer guides plus a double waste basket cabinet
- Solid surface counter tops with oversized, 60/40 stainless steel sinks
- Freestanding table with four chairs and leaf extension (2 folding, 2 solid chairs)
- Full size pantry with full extension pull-out drawers and shelves (N/A 34IK, 34RL2)
- Dining with a view, automotive frameless windows – 100% of our windows open
- New 48" x 22" solid window in the kitchen slide

Cedar Creek's residential design creates a feeling of home away from home. Name brand products including Congoleum®, Shaw®, Franklin™ and La-Z-Boy® offer high quality products for comfort and peace of mind while on the road.



A Fisher & Paykel stainless steel dishwasher is optional on select models.



36CK2



Cedar Creek

HATHAWAY EDITION

38DBRK

A TRAVELER'S DREAM - The 38DBRK floorplan offers luxury features that make RV ownership a pleasure. Home style amenities include a full pantry, 1-1/2 baths, a main level washer/dryer closet, Franklin™ residential power theater seating, a hide-a-bed sofa and an office desk.



The iN-Command® Control System is a central hub for RV operations. Control and monitor many systems via the panel or smart phone app.





REST EASY

The generous master bedroom includes a King Denver residential, 8" thick mattress with a fitted bedspread and pillows. Additional features include: a 32" Jensen television, King WiFiMax signal booster, washer/dryer prep, Congoleum™ Designer Series® vinyl floor covering. A luxury, 10" Champagne Dreamer triple foam mattress is an available option.



Cedar Creek Hathaway's luxurious bathrooms feature a 48", one-piece, fiberglass shower with sliding glass doors, built-in shelves and seating, an 18" high porcelain toilet with circular flush, a Create-a-Breeze Fantastic fan, LED night lighting, plus a Jack and Jill vanity with a full size backlit mirror, eight below the counter drawers, two large doors and a large walk-in closet.

INTRODUCING THE CEDAR CREEK OUTDOOR PARTY CENTER



This new party slide is only 20" wide, and tucks nicely into any fifth wheel front storage compartment. It packs a whopping punch with a 50" hidden TV on a double lift, a fold-up countertop with hidden storage, a 110V mini refrigerator and a Suburban gas griddle on a steel slide out tray. (N/A 38FLX)





Our freestanding table comes standard with a large leaf extension and four chairs, (two with hidden storage and two fold-away).



Swivel mounts on our 50" TVs allow for great viewing areas anywhere within the fifth wheel.

All Hathaway fifth wheels are now prewired for an optional Furion rear wireless camera or three camera security system, with voice activation and night vision. These back-up and security systems utilize wireless digital technology for a clearer view and enhanced safety.



Cedar Creek

HATHAWAY EDITION

The 12V Jensen Home Theater System fully integrates with smart devices, including Apple, and features a 50" LED TV, CD/DVD player, and AM/FM stereo. The 12V sound bar has two midrange speakers, two tweeters, two woofers and includes two outside speakers. Download the J-Control app and have complete access to the stereo from your mobile devices, indoors or out.



SEATING OPTIONS *Hathaway premium furnishings are American made and include a limited lifetime warranty.*



LA-Z-BOY
RECREATION
RECLINERS

Live life comfortably with our standard La-Z-Boy® recliners. Choose Graphite, Almond or Cashmere for residential comfort that lasts.



FRANKLIN
CORPORATION

THEATER SEATS

Optional Franklin™ residential power theater seating features exclusive "Wow" gel injected foam and premium springs for the ultimate in comfort. Graphite, Almond or Cashmere.



DÉCOR OCEAN TIDE



GOLD DUST



PEBBLESTONE





Hathaway's Z-frame, heated front storage compartment provides over 100 cu. ft. of storage and includes an extra vacuum port for outside clean-ups.



The Docking Station includes outside shower, black tank flush, water bypass, 12V battery disconnect, selector switches, dump valves, water tank and city fills for centralized convenience.



MorRyde "Step Above"® 5 tier entry step provides secure footing as you enter our extra wide 32" entry door.



Rinse off to avoid tracking the outdoors, indoors with this convenient door side cold water port.



Another feature that we've taken from residential construction is our super quiet "HP" (High performance) 15,000 BTU air conditioning system, which includes a larger compressor and cold air returns! This means 30% more air is being forced into the coach than a standard 15,000 BTU air conditioner.

KING The standard KING WiFiMAX WiFi router/range extender creates your own personal, private and secure WiFi network, just like at home. It can be configured to connect to available networks and devices with password access.



A&E awning with LED night light strip.



These day shades with blackout roller shades offer the best of both worlds. They're actually two shades in one – a night fabric lowers completely for privacy, or can be retracted to the top to reveal a full length day shade. Both day and night shades can be set in any position and are designed with speed and length controls for privacy or a scenic view.

All Cedar Creeks are equipped with an efficient, on-demand, tankless water heater that uses 50% less propane than a standard RV water heater. An optional 12 gallon gas/electric water heater is available.

CONSIDER THE OPTIONAL MULTI-FUNCTION CHOTTOMAN

Is it an ottoman or a chair? You decide.



CEDAR CREEK CONSTRUCTION – FOR YEARS OF CAREFREE CAMPING

Side Walls R-Value (R-11*)

- Handmade 2" x 2" - 16" (on center or less) sidewalls with individually fastened custom "L" brackets combined with 3M® Silaprene adhesives for a stronger frame without welding or lamination. (475 PSI at 2" per minute)

- "True" High Gloss Classic Gelcoat on all exteriors - the best of the best in fiberglass. Don't accept "hi-gloss fiberglass" or "gel-coated" sidewalls - only True gelcoat stands the test of time.
- 3M® Silaprene Bonded Sidewalls – resilient, grows stronger with age. Also has outstanding resistance to UV, heat, cold, moisture, oils, gasoline, highway chemicals, and creates a bond that cannot separate with time

- Sidewalls are bolted to the floor with 5/16" x 6-1/2" carriage bolts at each outrigger
- Glued R-7 glass wool insulation expanded to its full capacity within the sidewall frame
- Slide rooms insulated on all five sides

Floors R-Value (R-45*)

- 3" Aluminum frame floor with in-floor heat ducting and radius "L" brackets combined with 3M® Silaprene adhesives
- Cambered 12" I-beam "Z" frame with large support outriggers and full length welds

- 5/8" Tongue and groove plywood floor is attached to the aluminum frame with Silaprene and screwed every 6"
- Fully enclosed ABS removable panels for easier access into the underbelly. We use wood stringers to attach with no holes in the frame
- Triple layer insulation enhances the protective values of plywood, vinyl, carpet, carpet pads, tank heaters, etc.
- 12 Volt tank heaters on all tanks
- Radiant shield insulation – 97% reflectivity, 3% emission
- Water lines are protected inside the floor and away from exterior walls

Roof R-Value (R-40*)

- Full length 3/8" wood roof decking for a full walk-on roof
- Triple layer insulation
- Aluminum Truss Rafters on 16" centers with 8" wide circular air duct. Circular ducting combined with our high performance (bigger compressor) air conditioner gives Cedar Creek a 30% increase in air conditioning performance over our competitors in hotter climates
- Optional second Whisper Quiet roof mount air conditioner (Bedroom)
- Two ply – Tuff Ply rubber roof membrane
- Roof is bolted to sidewall with 5/16" x 3-1/2" carriage bolts
- Radiant shield insulation extends around to the bottom of the front cap – R Value 40, 97% reflectivity, 3% emission
- Attic vents

* Equivalent R-Value



Cedar Creek
HATHAWAY EDITION

View our construction video, or read the "Back to Basics" construction booklet at: www.forestriverinc.com/cedarcreek



Cold room tested to 0°F with standard insulation and heating pads.

SUPERIOR PERFORMANCE

Dexter® Axles/Brakes Suspension For Performance and Safety

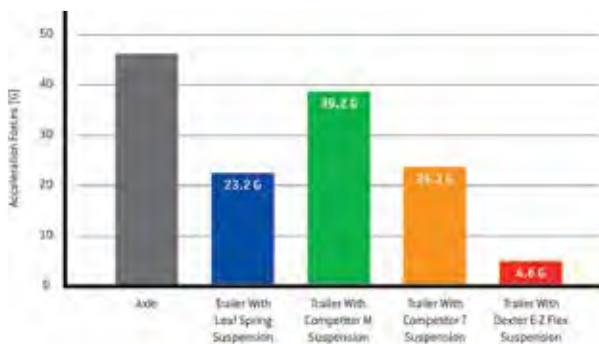
- Nev-R-Adjust® Brakes are always properly adjusted for improved stopping power in half the distance
- E-Z Flex® rubber equalization system with 1/2" link plates and eight grease zerks per side
- Heavy duty axles with bronze bushings in shackles (No plastic bushings like our competitors)
- 16" Eight lug, ST, "G" rated, 14 ply tires on 7000 lb. Dexter® Axles
- "H" rated, 16 ply tires on 8000 lb. Dexter® Axles



Dexter® Nev-R-Adjust® Brakes Standard



Dexter® E-Z Flex® Suspension Standard



Compare acceleration forces experienced by an axle and trailer while traveling over railroad tracks at 30 MPH. The E-Z Flex® System provides up to an 80% reduction in forces on the trailer frame vs. a standard equalizer. E-Z Flex® significantly outperforms all other competitors in the same road test for a smoother, more protective ride for your trailer and cargo.



Residential Glasswool Insulation, designed by nature.



Cedar Creek's famous residential All-aluminum Super-structure (Roof, sidewalls, and floor) on 16" centers or less.



3" Aluminum floor studs, heat duct and 5/8" tongue and groove plywood floor.



Aluminum window frames.



R-38 Radiant shield Therma-foil wrap through ceilings, underbellies and under front caps.



High-Performance Quiet Zone™ Ducted Air System with a 15,000-BTU HP air conditioner, a residential-style return air duct system and Comfort Control Center creates a dynamic combination for powerful results. It's the most efficient AC system in existence with both the industry's highest-performance AC and the industry's lowest power draw, with second Bedroom air conditioner too!



STATE-OF-THE-ART CONSTRUCTION

Top grade building components give Cedar Creek its reputation for long-lasting quality.

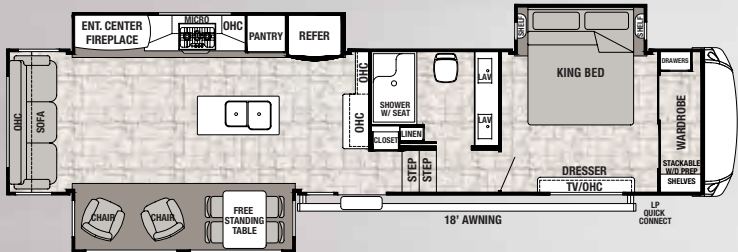
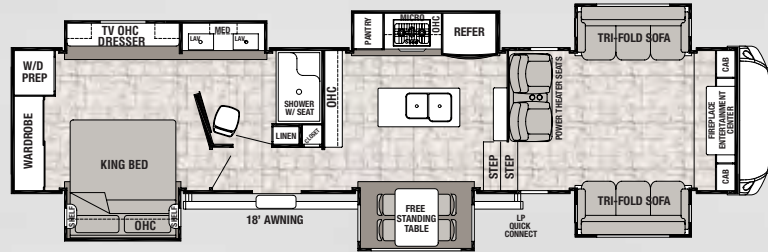
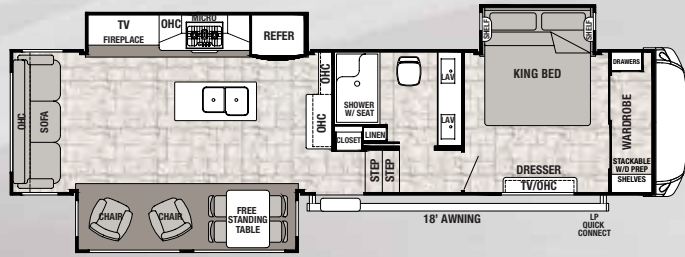
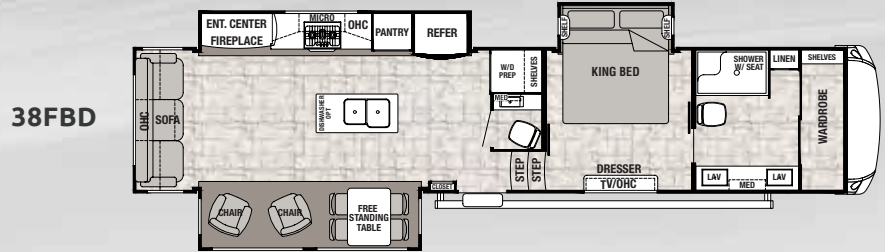
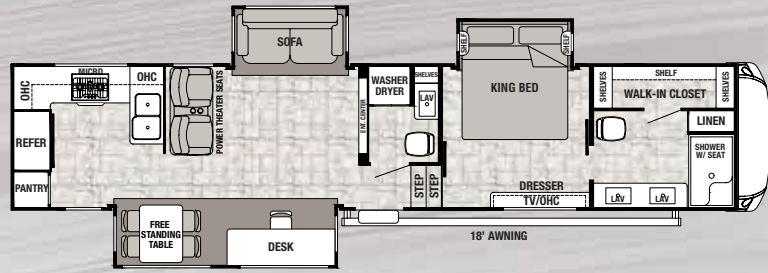
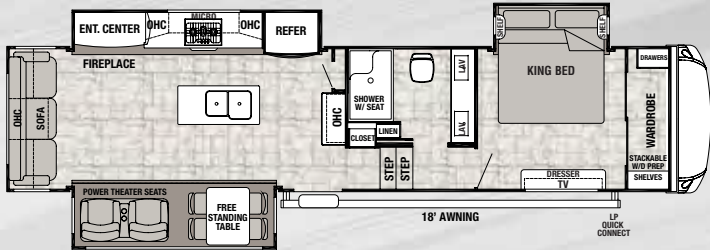
- Cedar Creek's famous all aluminum super-structure
- Bonded True High Gloss Classic™ Pearl gelcoat exteriors
- 100% Hehr automotive frameless windows
- Optional Level-Up 6-point hydraulic leveling system
- The Dexter® difference - safety and performance package
- Wired for wireless rear camera
- The iN-Command® Control System is a central hub for RV operations. Control and monitor many systems via the panel or smart phone app.
- 100% Aluminum framed windows and baggage doors
- Water lines are insulated within the floor substrate, not below the floor
- Heating pads on all tanks



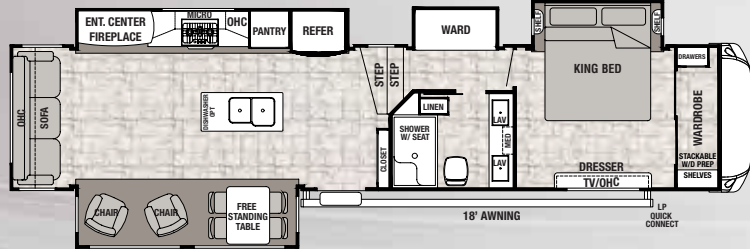
True High Gloss Classic fiberglass gelcoat exteriors and end walls. Truly the best of the best in fiberglass. Accept no imitations.

Cedar Creek

HATHAWAY EDITION



MODEL	341K	34RL2	36CK2	38CK2	38DBRK	38FBD	38FLX
GVWR	16190 lb.	16270 lb.	16525 lb.	18000 lb.	18000 lb.	18000 lb.	18000 lb.
Hitch Weight	2190 lb.	2270 lb.	2525 lb.	2455 lb.	2100 lb.	2295 lb.	2756 lb.
UVW	12224 lb.	12009 lb.	13134 lb.	13609 lb.	12809 lb.	13824 lb.	14569 lb.
CCC	3966 lb.	4261 lb.	3391 lb.	4391 lb.	5191 lb.	4176 lb.	3431 lb.
Exterior Length	37' 7"	37' 11"	40' 7"	41' 6"	40' 10"	41' 8"	41' 11"
Exterior Height	13' 5"	13' 5"	13' 5"	13' 5"	13' 5"	13' 5"	13' 5"
Exterior Width	96"	96"	96"	96"	96"	96"	96"
Fresh Water*	57 gal.	57 gal.	57 gal.	57 gal.	57 gal.	57 gal.	57 gal.
Gray Water	80 gal.	80 gal.	80 gal.	80 gal.	80 gal.	80 gal.	80 gal.
Black Water	40 gal.	40 gal.	40 gal.	40 gal.	40 gal.	80 gal.	40 gal.
Awning Size	18 ft.	16 ft.	18 ft.	18 ft.	18 ft.	18 ft.	21 ft.



*On-Demand, Tankless Water Heater

GVWR (Gross Vehicle Weight Rating) - is the maximum permissible weight of the unit when fully loaded. It includes all weights, inclusive of all fluids, cargo, optional equipment and accessories. For safety and product performance do NOT exceed the GVWR.

GAWR (Gross Axle Weight Rating) - is the maximum permissible weight, including cargo, fluids, optional equipment and accessories that can be safely supported by a combination of all axles.

UVW (Unloaded Vehicle Weight)* - is the typical weight of the unit as manufactured at the factory. It includes all weight at the unit's axle(s) and tongue or pin and LP Gas. The UVW does not include cargo, fresh potable water, additional optional equipment or dealer installed accessories.

*Estimated Average based on standard build optional equipment.

CCC (Cargo Carrying Capacity)** - is the amount of weight available for fresh potable water, cargo, additional optional equipment and accessories. CCC is equal to GVWR minus UVW. Available CCC should accommodate fresh potable water (8.3 lbs per gallon). Before filling the fresh water tank, empty the black and gray tanks to provide for more cargo capacity.

**Estimated average based on standard build optional equipment.

Each Forest River RV is weighed at the manufacturing facility prior to shipping. A label identifying the unloaded vehicle weight of the actual unit and the cargo carrying capacity is applied to every Forest River RV prior to leaving our facilities. The load capacity of your unit is designated by weight, not by volume, so you cannot necessarily use all available space when loading your unit.

FEATURES AND OPTIONS

HATHAWAY EDITION PACKAGE (Mandatory Features)

- Cedar Creek's famous all aluminum superstructure on 16" centers or less
- "True" pearl gelcoat exterior – truly the best of the best in gelcoat exteriors. 40% thicker and keeps it's high gloss longer than our competitors less expensive exteriors
- 100% "True" gelcoat front painted cap
- Jensen Home Theater System includes: 50" LED TV, swing arm, bracket, CD/DVD player, AM/FM stereo, and J-Control app for your smart devices. Apple licensing is also included
- 12V sound bar with 2 midrange speakers, 2 tweeters, 2 woofers and 2 outside speakers
- High sheen, European Beech cabinet doors with hidden hinges
- 36" Fireplace with remote and thermostat
- MORryde® 5 tier, "Step Above" entry steps with easy lifting mount, extra wide, 32" friction hinge, entry door
- LED Edison lighting fixtures with lighted tin medallion
- 88" Franklin® deluxe davenport and La-Z-Boy® recliners with lifetime warranty on parts. (N/A 38FLX, 38DBRK)
- Full pantry in the kitchen area with full extension drawers and 110V outlet (N/A 34RL2, 34IK)
- Insignia 18 cu. ft. stainless steel, electric refrigerator with dedicated inverter
- Furrion® Chef's Collection with gas cooktop and oven
- USB ports in kitchen and bedroom
- New panoramic window in kitchen area
- Solid surface counter-tops with oversized 60/40 stainless steel sinks
- Self-closing drawer guides with silverware organizer
- Jack and Jill sinks with full wall, backlit mirror (N/A 38FLX)
- Denver® king 8" mattress
- Congoleum® Carefree™ designer flooring, throughout (Dining slides will have Shaw® carpet)

- One-piece ceramic backsplash
- New IN-Command control system with smart phone remote app
- On Demand hot water heater
- Day shades and night black out shades
- InterVac central vacuum system with automatic dust pan, includes a new vacuum port in the front storage compartment
- Heated front storage compartment with diamond tread flooring
- Quick Disconnect LP gas line

EXTERIOR FEATURES

- DEXTER® Safety and Performance Package
 - Nev-R-Adjust® brakes are always properly adjusted for improved stopping power in half the distance
 - E-Z Flex™ rubber equalization system with 1/2" link plates and (8) grease zerks per side
 - E-Z Lube®, heavy duty axles with bronze bushings in shackles
- 16" 8-lug, ST, "G" rated tires on 7,000 lb. Dexter® axles, 17.5 "H" rated tires on 8,000 lb. Dexter® Axles
- Prepped for wireless observation system
- 100% automotive frameless windows with tinted safety glass – all windows open!
- Satellite pre-wire from docking station to both the living room and the bedroom
- Thicker 1-1/4" compartment doors with slam door latches and dedicated key lock
- Electric awning with LED night strip
- 50 Amp service
- Solid state 55 Amp power converter
- Central docking station
- Ducted 15,000 BTU Duo-Therm "HP" (High performance) air conditioner with larger compressor, circular motion, 8" ductwork and cold air returns. Larger compressor forces 30% more air into the coach - the most powerful air conditioner in RVs today.



- Braced and wired for second air conditioner
- Ladder
- Radius wrapped bottom metal skirt to the frame
- New door side cold water port

LIVING ROOM

- New decorative ceiling panels with flat roof design
- Ceiling fan
- Sculpted solid hardwood slide room fascia in living room

KITCHEN FEATURES

- Redesigned island with LED back lighting
- Create-A-Breeze Fantastic fan with thermostat and rain sensor
- Stainless steel 30" over the range microwave vented to the outside
- Large crown and cove molding throughout
- Free-standing table with hidden table leaf extension, (2) standard chairs and (2) folding chairs

MISCELLANEOUS FEATURES

- 12V battery disconnect
- Dometic comfort control center with dual zone control for heating and cooling
- Washer/dryer prep
- LP gas/carbon monoxide detector
- Smoke detector
- Suburban 35,000 BTU furnaces
- One year of SafeRide RV roadside assistance
- Membership to the Forest River Owner's Group (F.R.O.G.)

BEDROOM FEATURES

- Bedroom package redesign
- 32" LED Jensen television
- Ceiling mounted overhead reading lights with individual switches
- Extra wide mirrored closet doors
- Walk-in closet

OPTIONS

- Level-Up hydraulic 6-point leveling system
- Second 15,000 BTU ducted "Whisper Quiet" Penguin air conditioner
- Third 15,000 BTU ducted "Whisper Quiet" Penguin air conditioner with power management system
- Norcold 18 Cu. ft. stainless steel gas/ electric refrigerator
- 20 Cu. ft. stainless steel electric refrigerator with pull-out lower freezer compartment, inverter and ice maker (N/A 34RL2)
- 30" Stainless steel convection oven/ microwave
- Fisher and Paykel dishwasher (N/A 34RL2, 38FLX)
- Upgraded Champagne Dreamer mattress, 10" Thick
- Awning toppers
- 12' Electric slide room awning (N/A 38FLX)
- 1-1/4" Bike rack receiver hitch
- Create-A-Breeze Fantastic fans with thermostat and rain sensor in the bedroom area
- Matching Chottoman with interior storage (Chair or ottoman - you decide)
- Full body paint - Midnight Mist, Kristal
- Heat pump on main air conditioner
- Power theater seating IPO recliners (Standard 34IK, 38DBRK, 38FLX)
- LP generator prep
- Onan 5.5 kw Marquis Gold LP generator
- Cadet self-regulating bedroom wall heater (N/A 38FLX)
- Splendide® combination washer/dryer
- Splendide® stackable washer/dryer
- Cedar Creek Outdoor Party Center
- Wireless rear observation camera
- Dual pane windows
- Trail Air™ air ride hitch coupler
- 50 Amp cord reel
- Solar prep
- 200W Solar panels
- 12 Gal. gas/electric water heater
- Shaw® carpet with rebond carpet pad in living room
- Shaw® carpet with rebond carpet pad in bedroom

CEDAR CREEK FULL BODY PAINT

Full Body Paint, adorned with Cedar Creek graphics, will turn heads wherever you travel. These bold new exterior options are offered along with our Standard Graphics.



KRISTAL



MIDNIGHT MIST

INTERACTIVE MOBILE MANUALS

Download our Cedar Creek mobile app or visit our dynamic online manual to enhance your ownership experience. These interactive options provide incredible ease and insight into use, maintenance and enjoyment of your Cedar Creek product. Ranging from "How-To" videos, pictures and illustrations of various components, systems and features, to fully searchable content and downloadable PDFs for individual component owner's manuals, answers are always just a click away.



View the online manual at www.forestriverinc.com/cedarcreek/ownersmanuals, or download our FREE app from the App Store or Google Play!



PRE-DELIVERY INSPECTION FACILITY

20,000 square feet of quality assurance. The bare essentials for a premium product. This state-of-the-art facility gives immediate daily feedback to production for quality assurance in every unit built.

FREE MEMBERSHIP
to Forest River Owners' Group

www.forestriverfrog.com



**24/7 EMERGENCY
ROADSIDE ASSISTANCE
WITH VEHICLE PURCHASE***

TOWING JUMP-STARTS TIRE CHANGES FLUID DELIVERY LOCKOUT SERVICE	WINCH-OUT MOBILE MECHANIC TECHNICAL SUPPORT DEALER LOCATOR SERVICES
--	--



*VALID FOR 1 YEAR FROM DATE OF PURCHASE



Learn More
Scan this barcode using a QR Reader on your smart phone to learn more about Forest River.



A Berkshire Hathaway company.

Cedar Creek

HATHAWAY EDITION The Smart Choice for the Experienced RV'er

FOREST RIVER INC. ■ CEDAR CREEK DIVISION

501 Hawpatch Road ■ Topeka, IN 46571

Phone : 260-593-2404 ■ Fax: 260-593-2447 ■ Parts & Service: 260-593-4000

On The Web at: www.forestriverinc.com/cedarcreek

All information contained in this brochure is believed to be accurate at the time of publication. However, during the model year, it may be necessary to make revisions and Forest River, Inc., reserves the right to make all such changes without notice, including prices, colors, materials, equipment and specifications as well as the addition of new models and the discontinuance of models shown in this brochure. Therefore, please consult with your Forest River dealer and confirm the existence of any materials, design or specifications that are material to your purchase decision. ©2018 Cedar Creek, a Division of Forest River, Inc., a Berkshire Hathaway company. All Rights Reserved. 12/18

YOUR CEDAR CREEK DEALER



www.ForestRiverBuyLocal.com