

EST. 1974

FLAGSTAFF

WE'RE YOUR LIGHT-WEIGHT SPECIALIST

EP
E-PRO



FLAGSTAFF E-PRO



E19FD



E19FD



E12RK

FLAGSTAFF

E-Pro

The floor plan you want in the size you need. We have custom designed our trailers with the best in style and amenities while keeping your towing needs in mind. The Flagstaff E-Pro line of trailers are for those campers that have chosen to drive today's more fuel efficient and smaller SUV's. With floor plan weights within these vehicles towing capability, E-Pro is an exciting way to go camping using the vehicle you drive every day.

E-Pro is now offering more standards and options than anyone in its class. Standard on most models include a AM/FM stereo with Bluetooth and a USB port, a 12Volt TV with a built in DVD Player, a rear ladder, a WIFI Ranger booster with available WIFI connectivity, a roof mount solar panel with a 1000 Watt converter, a Shower Miser Water Saver, plus many more standard features. Options include a 13,500 BTU AC, a tongue mount bike rack, an off road package that includes a lift kit and 15" Mud Rover radial tires and other great features.



E19FD



E16BH



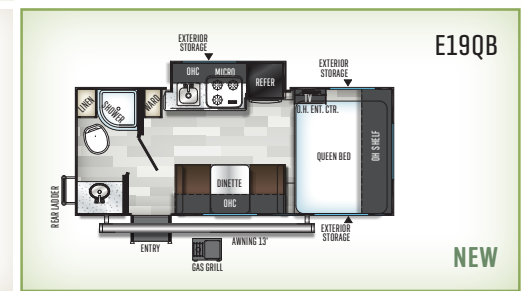
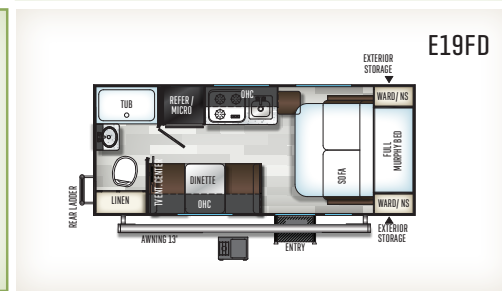
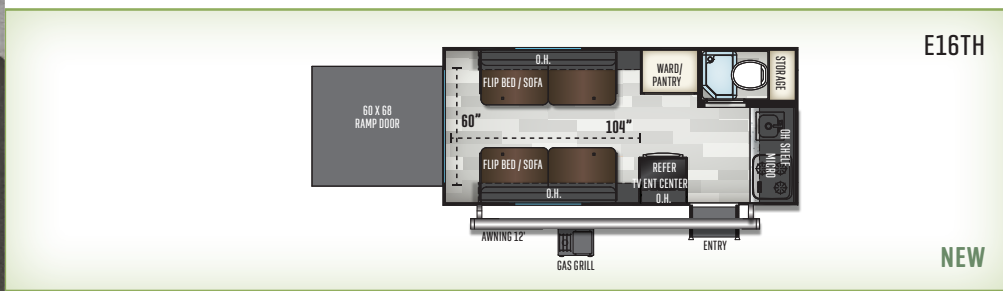
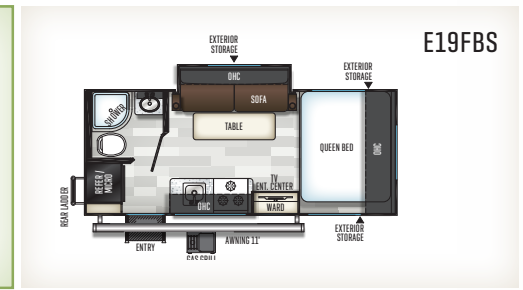
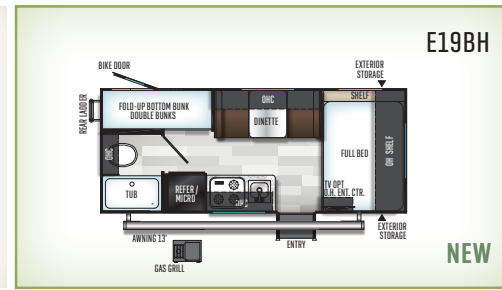
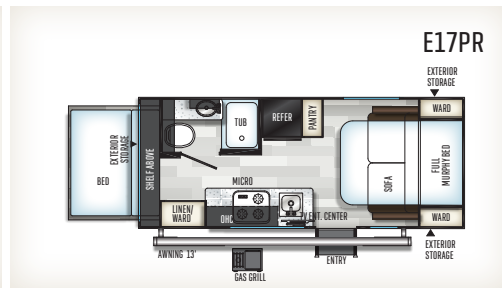
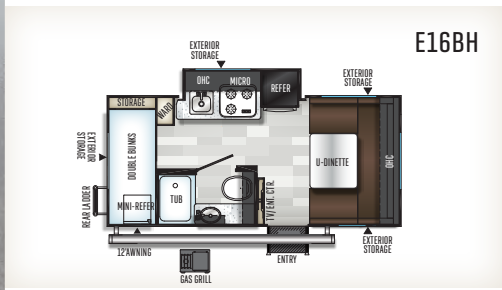
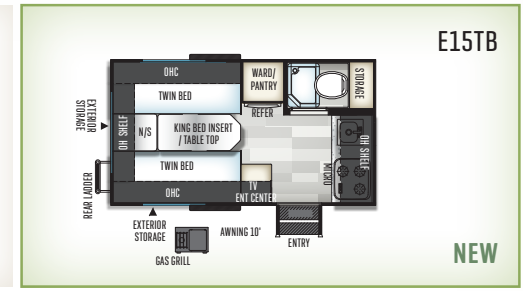
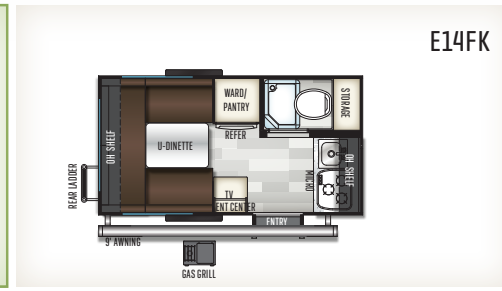
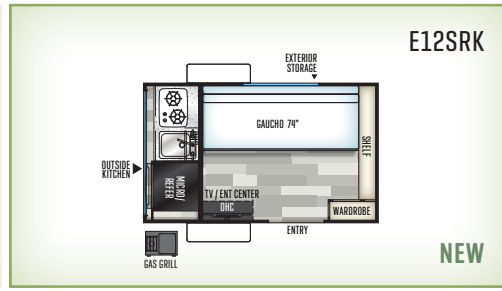
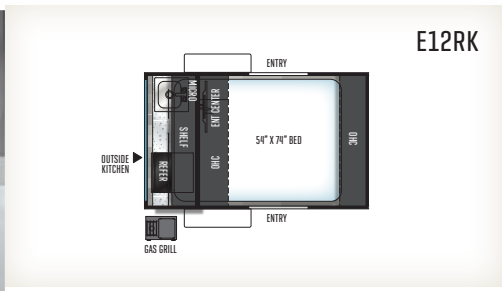
E16BH

FLAGSTAFF

Modern Styling & Amenities

The floor plan you want in the size you need. We have custom designed our trailers with the best in style and amenities while keeping your towing needs in mind. Quality craftsmanship and attention to detail have been put into our E-Pro trailers, all with you in mind. The well equipped E-Pro E16TH is our very first toyhauler and allows you take your toys with you and get off the beaten path.





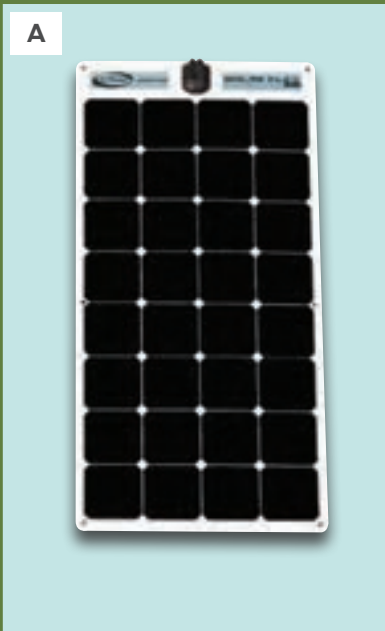
| MODEL NUMBER | E12RK | E12SRK | E14FK | E15TB | E16BH | E16TH | E17PR | E19FD | E19FBS | E19BH | E19QB |
|--------------------------|--------|--------|--------|---------|--------|--------|--------|--------|--------|--------|--------|
| UVW | 1164 | 1763 | 2259 | 2483 | 2993 | 2842 | 3161 | 2829 | 3075 | 3088 | 3144 |
| BASE DRY HITCH WEIGHT | 162 | 258 | 331 | 366 | 420 | 530 | 452 | 390 | 413 | 360 | 413 |
| CCC | 798 | 1135 | 712 | 1383 | 927 | 1688 | 791 | 1061 | 838 | 772 | 769 |
| LENGTH (HITCH TO BUMPER) | 11' 4" | 12' | 14' 1" | 15' 10" | 18' 4" | 18' 4" | 20' | 20' | 20' | 20' | 20' |
| WIDTH | 76" | 84" | 76" | 88" | 88" | 88" | 88" | 88" | 88" | 88" | 88" |
| HEIGHT W/ A/C | 90" | 90" | 112" | 115" | 115" | 117" | 115" | 115" | 115" | 115" | 115" |
| INTERIOR HEIGHT | 58" | 58" | 78" | 78" | 78" | 78" | 78" | 78" | 78" | 78" | 78" |
| FRESH WATER CAPACITY | 20 gal | 20 gal | 26 gal | 37 gal | 37 gal | 37 gal | 37 gal | 37 gal | 37 gal | 37 gal | 37 gal |
| GRAY WATER CAPACITY | 6 gal | 6 gal | 12 gal | 12 gal | 30 gal | 12 gal | 30 gal | 30 gal | 30 gal | 30 gal | 30 gal |
| BLACK WATER CAPACITY | NA | NA | 12 gal | 12 gal | 30 gal | 12 gal | 30 gal | 30 gal | 30 gal | 30 gal | 30 gal |

The Unloaded Vehicle Weight (UVW) listed represents the weight of one trailer with that model's standard equipment including the content of specified option packages.
 * See back cover for further specification definitions.

FLAGSTAFF E-PRO SERIES

Popular Features

FEATURES THAT MAKE YOUR TRIPS FEEL LIKE HOME. Flagstaff takes careful consideration to each feature added into each product produced. Every detail is considered ranging from extra sleeping room, storage, comfort and convenience. Take time to review the features listed below and match them with the competition's products. We're confident you'll discover Flagstaff is the superior choice.



A Standard 100W Roof Mount Solar Panel w/ 1000W Inverter (NA E12RK)

B Shower Miser Water Saver (Std on all models with showers)

C WIFI Ranger Sky 4 WIFI Booster with LTE available connectivity

D Optional Tongue Mount Bike Rack

E Dexter Torflex Axles:
• Independent wheel suspension and self-damping action
• Rubber cushioning eliminates metal-to-metal contact.
• Forged torsion arm for maximum strength

Models are also equipped with E-Z Lube® System and Nev-R-Adjust® Brakes.

Flagstaff E-Pro

STANDARDS & OPTIONS

| MODELS | E | MODELS | E | MODELS | E |
|---|----|--|-------|---|----|
| STANDARD PACKAGE A (N/A E12RK) | | Coleman Stove/Grill Combo | S | Shower Miser Water Saver (NA E12RK, E12STK) | S* |
| Roller Shades | S | Ground Solar Prep | S | Power Awning (NA E12RK & E12SRK) | S* |
| 12 Volt TV w/ DVD Player | S | | | Black Tank Flush (N/A E12RK) | S* |
| AM/FM Stereo w/ Bluetooth and USB | S | STANDARDS | | 360 Siphon Cap on Black Tank (N/A E12RK, E12SRK) | S* |
| Multidirectional TV Antenna | S | Aluminum Cage Dinette Base (Dinette models) | S* | Spare Tire W/ Carrier | S |
| Quick recovery Gas/Electric Water Heater | S | 6 Sided Aluminum Cage Construction | S | Water-Pur Filtration System (N/A E12RK) | S* |
| Outside Speaker (N/A E12SRK) | S* | Vacuum Laminated Roof and Walls | S | | |
| 100 Watt Roof Mount Solar Panel w/ 1000 Watt Inverter | S | 4 Frame Mounted Stabilizer Jacks (2 on E12RK, E12SRK) | S | OPTIONS | |
| WiFi Ranger WiFi Booster Sky 4 | S | MORryde Entry Steps (N/A E12RK, E12SRK) | S* | 13,500 Low Profile Roof A/C | 0 |
| Power Awning (N/A E12SRK) | S* | Roof Ladder (NA E12RK, E12SRK) | S* | Chill Chaser Heat Strip For A/C (E12RK only) | S* |
| 20,000 BTU Furnace | S | Torsion Axle, Rubber-Ryde Suspension | S | Manual Awning E12RK & E12SRK | 0* |
| Coleman Stove/Grill Combo | S | Nitro Filled Radial Tires | S | CSA (Canadian Standards) | 0* |
| 2- 20# LP Bottles | S | Prewire for Back Up Camera (N/A E12RK, E12SRK, E16TH) | S* | Gas Oven (E19BH, E19FBS, E19FD) | 0* |
| Microwave | S | Magnetic Baggage Door Catches | S | Convection Microwave (N/A E12RK, E12SRK) | 0* |
| Polished Alloy Wheels | S | WiFi Ranger Sky 4 WiFi Booster, LTE Ready | S | Pro Rac Mounting Bars (E12RK & E12SRK Only) | 0* |
| Tinted Bonded Frameless Windows | S | Maxxair® Ventilation Fan and Vent Cover | | Pro Rac Mounting Bars w/ Removable Ladder | |
| Spare Tire | S | (Opt E12RK, N/A E14FK, E15TB & E16TH) | S*/0* | (N/A E12RK & E12SRK) | 0* |
| Heated Mattress, (NA E14FK, E16BH, E15TB, E16TH) | S* | Power Vent Fan (E14FK, E15TB & E16TH Only) | S* | Pro Rac Kayak, Bike, Tie Downs, Etc. Accessories | 0 |
| | | Recessed Cooktop W/ Flush Mount Cover (N/A E12RK, E12SRK) | S* | Tongue Mount Bike Rack | 0 |
| STANDARD PACKAGE B (E12RK Only) | | Microwave Oven | S | Off Road Pkg. includes 15" Mud Rover Radial Tires and a | |
| AM/FM Stereo w/ Bluetooth and USB | S | Auto Gas/Electric Refrigerator | | Lift Kit (Step extention on the E12RK and E12SRK) | 0* |
| 12 Volt TV w/ DVD Player | S | (E19BH, E19FBS & E19FD) (N/A E12RK) | S* | | |
| Multidirectional TV Antenna | S | 3-Way Refrigerator (N/A E12RK, E19BH, E19FBS & E19FD) | S | | |
| Outside Speaker | S | Water Heater, Gas/Electric (N/A E12RK) | S* | | |

STANDARDS & OPTIONS ARE SUBJECT TO CHANGE.

Look for our other popular lines of Flagstaff camping trailers.



FLAGSTAFF TENT CAMPERS



FLAGSTAFF TRAVEL TRAILERS



FLAGSTAFF FIFTH WHEELS

FREE MEMBERSHIP
to Forest River Owners' Group

www.forestriverfrog.com



PRE-DELIVERY INSPECTION FACILITY

20,000 square feet of quality assurance. The bare essentials for a premium product. This state-of-the-art facility gives immediate daily feedback to production for quality assurance in every unit built.

SPECIFICATION DEFINITIONS

GVWR (Gross Vehicle Weight Rating) - is the maximum permissible weight of the unit when fully loaded. It includes all weights, inclusive of all fluids, cargo, optional equipment and accessories. For safety and product performance do NOT exceed the GVWR.

GAWR (Gross Axle Weight Rating) - is the maximum permissible weight, including cargo, fluids, optional equipment and accessories that can be safely supported by a combination of all axles.

UVW (Unloaded Vehicle Weight)* - is the typical weight of the unit as manufactured at the factory. It includes all weight at the unit's axle(s) and tongue or pin and LP Gas. The UVW does not include cargo, fresh potable water, additional optional equipment or dealer installed accessories.

*Estimated average based on standard build optional equipment.

CCC (Cargo Carrying Capacity)** - is the amount of weight available for fresh potable water, cargo, additional optional equipment and accessories. CCC is equal to GVWR minus UVW. Available CCC should accommodate fresh potable water (8.3 lbs per gallon). Before filling the fresh water tank, empty the black and gray tanks to provide for more cargo capacity.

** Estimated average based on standard build optional equipment

Each Forest River RV is weighed at the manufacturing facility prior to shipping. A label identifying the unloaded vehicle weight of the actual unit and the cargo carrying capacity is applied to every Forest River RV prior to leaving our facilities.

The load capacity of your unit is designated by weight, not by volume, so you cannot necessarily use all available space when loading your unit.

Flagstaff Warranty. Our Promise.

FOR DETAILS ON FLAGSTAFF'S COMPLETE WARRANTY PROGRAM, SEE YOUR FLAGSTAFF DEALER. When it comes to backing products with the same quality and commitment it does when it begins the manufacturing process, the only name you have to remember when you're looking for a recreational vehicle is Flagstaff. Flagstaff offers the following additional limited warranties to the original purchasers. Consult written warranty for details.

1. Twelve-year vinyl roof warranty.
2. Two-year fiberglass warranty.
3. Ten-year Torflex® axle warranty.
4. One-year bumper to bumper warranty.
5. Five-year tent warranty



Learn More
Scan this barcode using a QR Reader on your smart phone to learn more about Forest River.



A Berkshire Hathaway company.

201 WEST ELM MILLERSBURG, IN 46543 WWW.FORESTRIVERINC.COM/FLAGSTAFF 574.642.2640

CUSTOMER SATISFACTION



YOUR FLAGSTAFF DEALER

www.ForestRiverBuyLocal.com

All information contained in this brochure is believed to be accurate at the time of publication. However, during the model year, it may be necessary to make revisions and Forest River, Inc., reserves the right to make all such changes without notice, including prices, colors, materials, equipment and specifications as well as the addition of new models and the discontinuance of models shown in this brochure. Therefore, please consult with your Forest River dealer and confirm the existence of any materials, design or specifications that are material to your purchase decision. Litho. U.S.A FOR 1582 W: 2019.01.14

**24/7 EMERGENCY
ROADSIDE ASSISTANCE
WITH VEHICLE PURCHASE***

TOWING
JUMP-STARTS
TIRE CHANGES
FLUID DELIVERY
LOCKOUT
SERVICE

WINCH-OUT
MOBILE MECHANIC
TECHNICAL
SUPPORT
DEALER LOCATOR
SERVICES



*VALID FOR 1 YEAR FROM DATE OF PURCHASE