



# GEORGETOWN **GT3**

BY FOREST RIVER

## 3 SERIES DIMENSIONS & CAPACITIES

**GVWR (Gross Vehicle Weight Rating)** is the maximum permissible weight of the unit when fully loaded. It includes all weights, inclusive of all fluids, occupants, cargo, optional equipment and accessories. For safety and product performance do NOT exceed the GVWR.

**GCWR (Gross Combined Weight Rating)** is the maximum permissible loaded weight of your motor home and any towed trailer or towed vehicle. Actual GCWR of this vehicle may be limited by the sum of the GVWR and the installed hitch receiver maximum capacity rating; see hitch rating label for detail.

**GAWR (Gross Axle Weight Rating)** is the maximum permissible weight, including cargo, fluids, optional equipment and accessories that can be safely supported by each axle.

**UVW (Unloaded Vehicle Weight)\*** is the typical weight of the unit as manufactured at the factory. It includes all weight at the unit's axle(s), including full fuel, all fluids and LP Gas. The UVW does not include cargo, fresh potable water, additional optional equipment or dealer installed accessories.

\*Estimated Average based on standard build optional equipment.

**CCC (Cargo Carrying Capacity)\*\*** is the amount of weight available for fresh potable water, cargo, passengers, additional optional equipment and accessories. CCC is equal to GVWR minus UVW. Available CCC should accommodate fresh potable water (8.3 lbs per gallon). Before filling the fresh water tank, empty the black and gray tanks to provide for more cargo capacity.

\*\* Estimated average based on standard build optional equipment

Each Forest River RV is weighed at the manufacturing facility prior to shipping. A label identifying the unloaded vehicle weight of the actual unit and the cargo carrying capacity is applied to every Forest River RV prior to leaving our facilities.

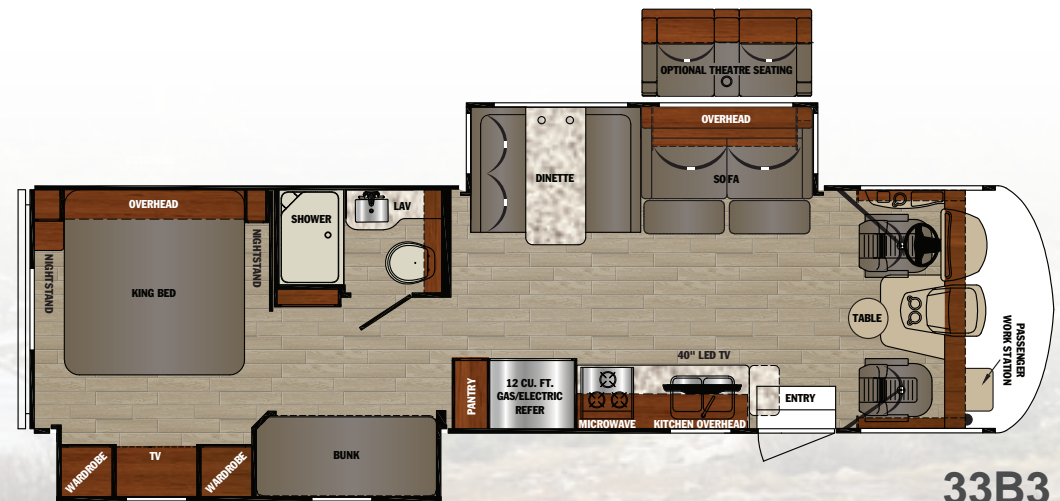
The load capacity of your unit is designated by weight, not by volume, so you cannot necessarily use all available space when loading your unit.

Actual towing capacity is dependent upon your particular loading and towing circumstances, which includes the GVWR, GAWR and GCWR as well as adequate trailer brakes. Please refer to the Operator's Manual of your vehicle for further towing information.

	30X3	33B3
Chassis	Ford F53	Ford F53
Engine	V-10	V-10
Horsepower	320 HP	320 HP
Torque (ft-lbs)	460	460
Wheelbase	190"	228"
Fuel Capacity (gal)	80	80
GVWR (lbs)	18,000	20,500
GCWR (lbs)	23,000	26,000
GAWR Front (lbs)	7,000	7,500
GAWR Rear (lbs)	12,000	13,500
Exterior Storage (cu ft)	133	156
LP Tank (gal)	24.5	24.5
Fresh Water (gal)	50	50
Water Heater (gal)	6	6
Grey Tank (gal)	42	42
Black Tank (gal)	42	42
Length	31' 11"	34' 6"
Exterior Width	99.5"	99.5"
Exterior Height	12' 3"	12' 3"
Interior Width	95.5"	95.5"
Interior Height	82"	82"
Awning Length	20'	12'
Furnace (BTU)	35K	35K



30X3



33B3

## 3 SERIES STANDARDS & OPTIONS

### STANDARDS

One Piece Fiberglass Roof  
 Custom Countertops Throughout  
 Undermount Stainless Steel Kitchen Sink  
 Fiberglass Front Cap w/ Back-lit Logo, LED Accent Lights and Automotive Bonded Front Windshield  
 Power Patio Awning w/ LED Light **Chrome Package:**  
 Chrome Headlight Bezels  
 Chrome Foglight Bezels  
 Chrome Mirrors  
 Slideout Room Awning(s)  
 Stainless Steel Bathroom Sink  
 Dream Dinette  
 "SUPER STORAGE" Rear Cargo Compartment  
 30" Wide Entrance Door  
 Outside Shower  
 Flush Floor Construction Throughout  
 Rotocast Storage Compartments w/ Drains  
 Rear Roof Ladder  
 Remote/Heated Exterior Mirrors  
 Outside Entertainment Center w/ 32" LED TV  
 Pioneer Dash Entertainment System w/ AM/FM/DVD/Bluetooth/USB  
 Rubber Tread Entry Steps  
 Custom Cockpit Dash w/ ABS Side Consoles, Drink Holders, 110V Outlet/USB  
 Low Profile Engine Cover w/ Drink Holders  
 Adjustable 3 Point Seat Belts  
 Deluxe Driver Passenger Seating  
 Hide-A-Bed Sofa w/ Footrests

Night Shades Throughout  
 40" LED Main TV  
 Full Extension Ball Bearing Drawer Guides  
 Heated and Enclosed Holding Tanks w/ Arctic Package  
 Pocket Door To Bedroom  
 32" LED Bedroom TV w/ Flip Up  
 Bedside Nightstands w/ 12V and USB  
 5000 lbs. Tow Hitch w/ 7-Way Plug  
 Dual Coach Batteries  
 Hydraulic 4-Point Leveling Jacks  
 Color Side and Rear Camera Package  
 Black Water Tank Flush  
 Driver/Passenger LED Map Lights  
 LED Bunk Accent Lights  
 (2) High Output Quiet Air Command™ Ducted Roof A/Cs w/ Chill Construction and (1) Heat Pump  
 KING Jack™ Digital TV Antenna w/ Mount & Built-in Signal Meter  
 Solar Prep  
 6 Gallon Gas/Electric Water Heater  
 5.5 KW Onan Generator  
 50 AMP Service  
 Auto Transfer Switch  
 Vacuum Bonded Gel Coated Sidewalls w/ Graphics  
 Steel Front Cockpit Cage  
 Triple Electric Entrance Step  
 Rubberized Entry Assist Handle (exterior)  
 Stainless Steel Entry Assist Handle (interior)  
 Power Front Sun Shade  
 Manual Cockpit Side Sun Shades  
 Passenger Side Workstation  
 Diamond Plate Rubber Floor Covering (driver area)

Shaw Residential Vinyl Flooring  
 3-Burner Cooktop w/ Oven and Flush Mount Glass Stove Cover  
 Flip-up Countertop Extension  
 Emergency Start Switch  
 Quick Connect Exterior LP Fitting

### POPULAR OPTIONS

Manual Front Overhead Bunk  
 P2K Power Front Overhead Bunk  
 MaxxAir Power Fan  
 Manual Theatre Seating

### CABINETRY

Landis Ash  
 Raised Panel Solid Wood Cabinet Doors

### INTERIOR DÉCOR OPTIONS

Café  
 Sand Castle  
 Granite

### EXTERIOR OPTIONS

Champagne Colored Exterior Gel Coat

### CUSTOMER SATISFACTION



[www.ForestRiverBuyLocal.com](http://www.ForestRiverBuyLocal.com)

**FREE MEMBERSHIP**  
 to Forest River Owners' Group

[www.forestriverfrog.com](http://www.forestriverfrog.com)



For more information on Coach-Net, scan here.



## GEORGETOWN BY FOREST RIVER GT3

For more information visit  
[www.forestriverinc.com/gt3](http://www.forestriverinc.com/gt3)

Forest River, Inc.  
 Georgetown Division  
 902 County Road 1  
 Elkhart, IN 46515  
 (574) 367.3285



YOUR GT3 DEALER



**Learn More**  
 Scan this barcode using a QR Reader on your smart phone to learn more about Forest River.



A Berkshire Hathaway company.

All information contained in this brochure is believed to be accurate at the time of publication. However, during the model year, it may be necessary to make revisions and Forest River, Inc., reserves the right to make all such changes without notice, including prices, colors, materials, equipment and specifications as well as the addition of new models and the discontinuance of models shown in this brochure. Therefore, please consult with your Forest River, Inc., dealer and confirm the existence of any materials, design or specifications that are material to your purchase decision. 9/18

©2018 GT3

a Division of Forest River, Inc., a Berkshire Hathaway company. All Rights Reserved.