

ROCKWOOD FIFTH WHEELS

# Rockwood

PROVIDING OUTDOOR FUN SINCE 1974.



## FIFTH WHEELS

ULTRA LITE AND SIGNATURE FIFTH WHEELS



# Ultra Lite Fifth Wheels

**LIGHTEN YOUR LOAD AND RELAX IN COMFORT.** The Rockwood Ultra Lite Fifth Wheel models provide excellent light weight alternatives for most owners of 1/2 ton pick up trucks. Equipped with a standard LCI Turning Point hitch, you can tow with almost any size truck bed. Our Ultra Lite fifth wheels have been custom designed with the best in styling and amenities while keeping your towing needs in mind.



2881S  
SLATEWOOD / PEBBLE

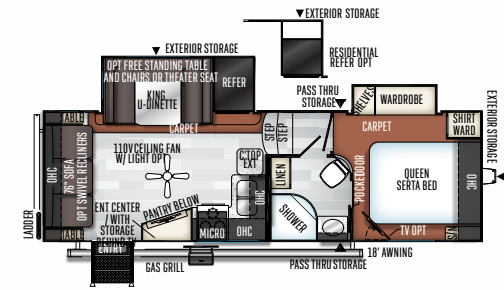


OPTIONAL WHITE EXTERIOR

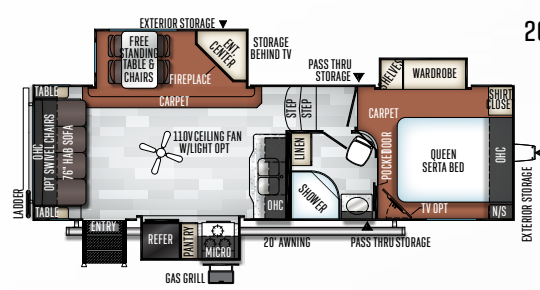


STANDARD TAN EXTERIOR

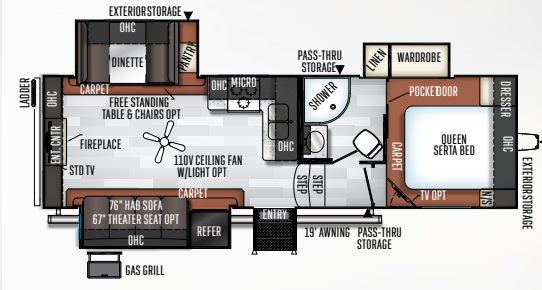




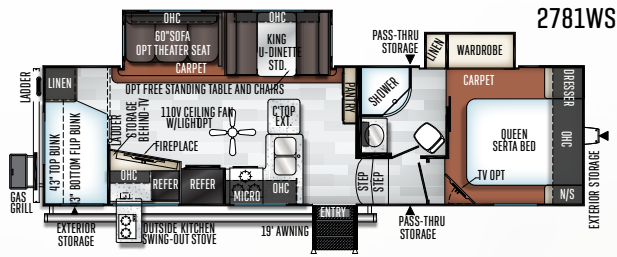
2441WS



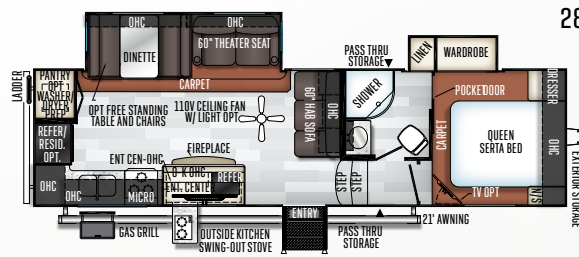
2620WS



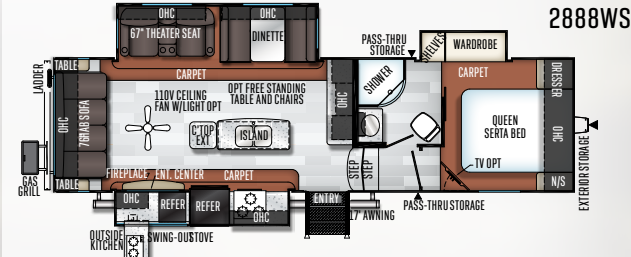
2650WS



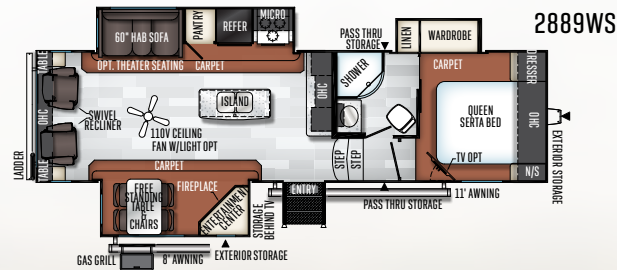
2781WS



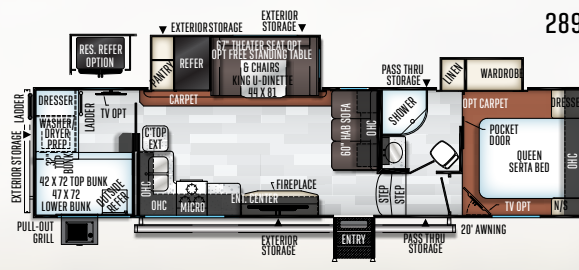
2881S



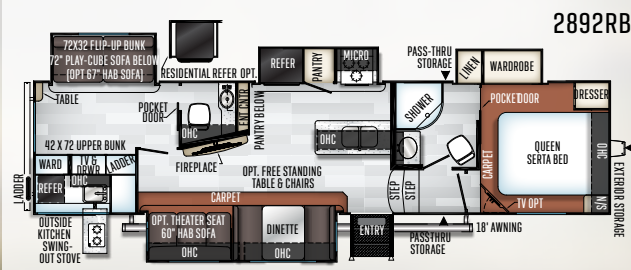
2888WS



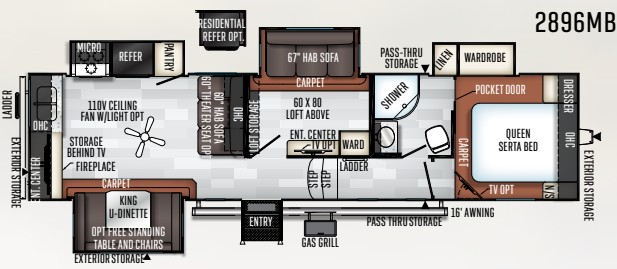
2889WS



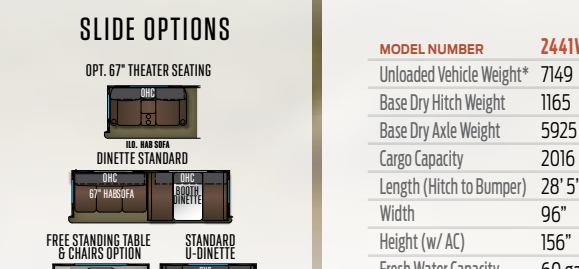
2891BH



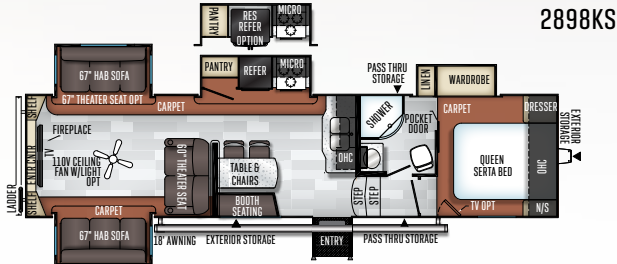
2892RB



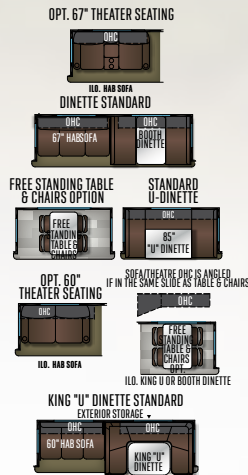
2896MB



2898KS



SLIDE OPTIONS



LAYOUT MAY BE MIRRORRED DEPENDING ON THE MODEL

MODEL NUMBER	2441WS	2620WS	2650WS	2781WS	2881S	2888WS	2889WS	2891BH	2892RB	2896MB	2898KS
Unloaded Vehicle Weight*	7149	7430	7766	8472	8163	8694	8709	8964	9839	9324	9402
Base Dry Hitch Weight	1165	1130	1263	1280	1265	1365	1375	1305	1450	1435	1456
Base Dry Axle Weight	5925	6241	6444	7133	6839	7270	7275	7600	8330	7830	7887
Cargo Capacity	2016	1700	1497	1608	1902	2671	2666	2341	1611	2111	2054
Length (Hitch to Bumper)	28' 5"	29'10"	29'10"	32' 5"	32' 5"	32' 5"	32' 5"	36'	36'	36'	36'
Width	96"	96"	96"	96"	96"	96"	96"	96"	96"	96"	96"
Height (w/ AC)	156"	156"	156"	156"	156"	156"	156"	156"	156"	156"	156"
Fresh Water Capacity	60 gal	60 gal	60 gal	60 gal	60 gal	60 gal	60 gal	60 gal	60 gal	60 gal	60 gal
Gray Water Capacity	45 gal	45 gal	45 gal	45 gal	45 gal	90 gal	90 gal	90 gal	108 gal	90 gal	90 gal
Black Water Capacity	45 gal	45 gal	45 gal	45 gal	45 gal	45 gal	45 gal	45 gal	90 gal	45 gal	45 gal

The Unloaded Vehicle Weight (UJV) listed represents the weight of one trailer with that model's standard equipment including the content of specified option packages. \* See back cover for further specification definitions.

# Signature

## BY ROCKWOOD

**PROVIDING THE COMFORTS OF HOME WHILE ON THE ROAD.** We have custom designed our fifth wheels with the best in style and amenities while keeping your towing needs in mind. Quality craftsmanship and attention to detail have been put into our Signature fifth wheels, all with you in mind. Our fully equipped kitchens with modern conveniences and spacious bedrooms featuring residential queen bed-slideouts will make you feel like you never left home.



OPTIONAL WHITE EXTERIOR



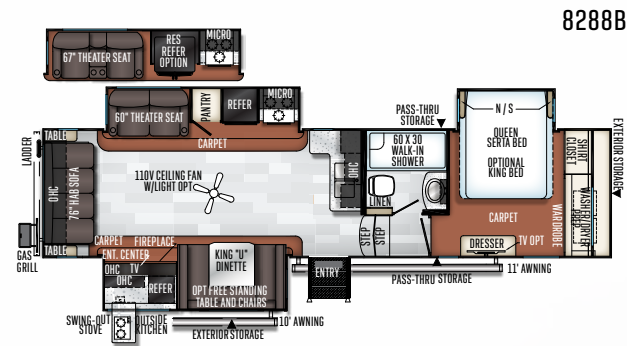
STANDARD CHAMPAGNE EXTERIOR



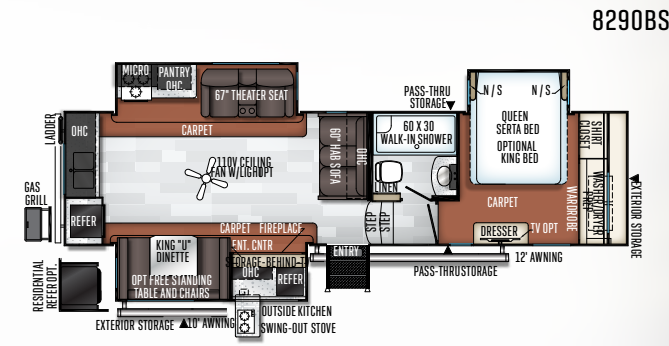




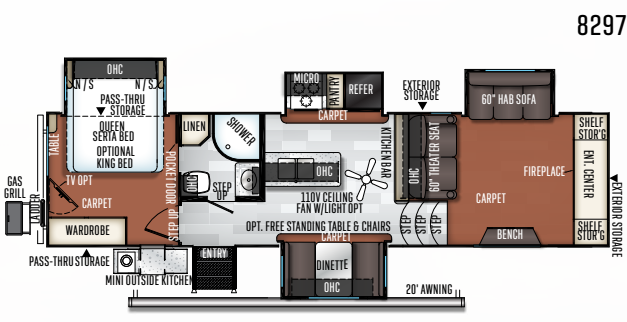
**8297S**  
AMERICAN MAPLE / CHOCOLATE



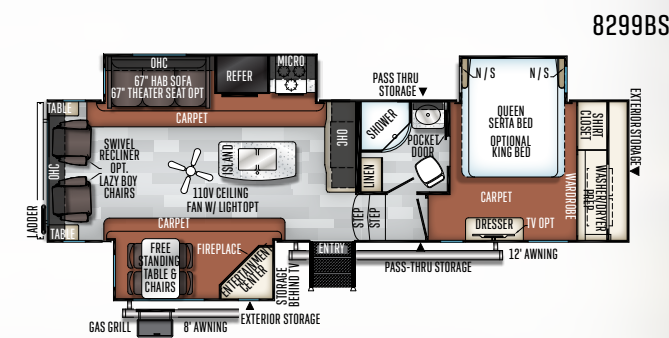
**8288BS**



**8290BS**

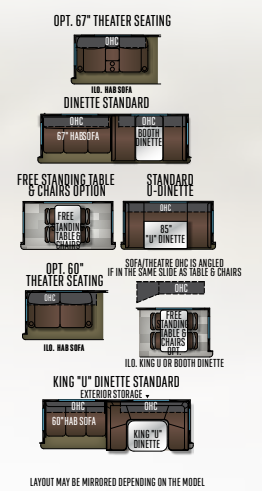


**8297S**



**8299BS**

**SLIDE OPTIONS**



MODEL NUMBER	8288BS	8290BS	8297S	8299BS
Unloaded Vehicle Weight*	10072	9516	9379	9505
Base Dry Hitch Weight	1574	1637	1550	1581
Base Dry Axle Weight	8439	7820	7770	7865
Cargo Capacity	1502	2121	2171	2076
Length (Hitch to Bumper)	36' 7"	34' 11"	34' 11"	34' -1"
Width	96"	96"	96"	96"
Height (w/ AC)	156"	156"	156"	156"
Fresh Water Capacity	60 gal	60 gal	58 gal	60 gal
Gray Water Capacity	75 gal	90 gal	90 gal	90 gal
Black Water Capacity	45 gal	45 gal	45 gal	45 gal

The Unloaded Vehicle Weight (UVW) listed represents the weight of one trailer with that model's standard equipment including the content of specified option packages. \* See back cover for further specification definitions.

ROCKWOOD FIFTH WHEELS SERIES

# Popular Features

**FEATURES THAT MAKE YOUR TRIPS FEEL LIKE HOME.** Rockwood takes careful consideration to each feature added into each product produced. Every detail is considered ranging from extra sleeping room, storage, comfort and convenience. Take time to review the features listed below and match them with the competition's products. We're confident you'll discover Rockwood is the superior choice.

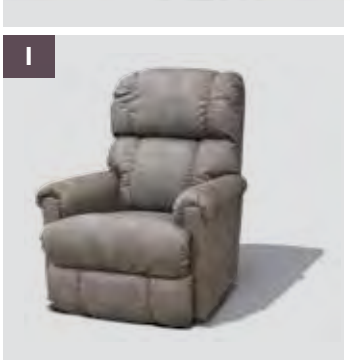
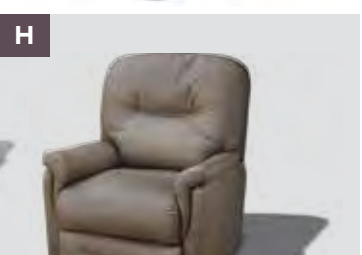
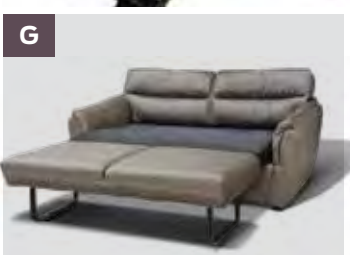
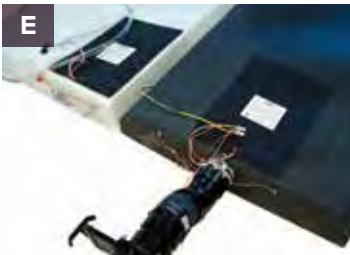


Optional White Exterior



- A Power Awning with adjustable rain dump and LED lighting (Std.)
- B Large LCD TV's and entertainment center with "Bluetooth" technology.
- C Radius glass door shower (N/A Models with tub bases)
- D Solid surface counter top with under mount sink
- E Water Filtration System (Std. Opt.)
- F Nautilus Water Management System (Std.)
- G Deluxe tri-fold sleeper sofa w/ comfortable, easy set-up bed (Per floorplan)





**A** Rear camera prep. (Std. all models) The Furion observation camera system with digital wireless technology is sold separately.

**B** Forest River switch center (Std.)

**C** WIFI Ranger Sky 4 WIFI Booster and available internet connectivity (Std.)

**D** The LCI Turning Point hitch provides:  
 1) Full 90 degree worry free turning,  
 2) Eliminates the need for a slider hitch  
 3) Greatly enhances maneuverability

**E** Heated holding tanks with 12 volt heat pads secured to the bottom. No need to use the furnace to heat tanks when traveling. (Std.)

**F** Solar panel prep (Std. All Models) The Zamp 40 amp. portable solar panel shown is sold separately.

**G** Tri-fold sofa. Fabric matched to decor.

**H** Swivel Rocker Recliner where applicable. Fabric to match. (Per floorplan)

**I** La-Z-Boy swivel recliner where applicable. Fabric to match decor. (Opt.)

**J** 67" Heated theatre seating per plan where available. Fabric matched to decor. (Per floorplan)

## CHOCOLATE

SOFA, CHAIRS, DINETTE CUSHIONS  
 (LEATHER APPEARANCE) (LEVI CHOCOLATE)

ACCENTS (TYPHOON PEBBLE)



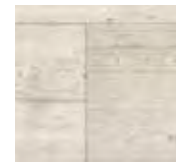
CURTAINS (DELORES GRAPHITE)



SLATEWOOD  
STANDARD



AMERICAN MAPLE  
OPTIONAL



STANDARD  
FLOOR COVERING



OPTIONAL  
FLOOR COVERING



CARPET

## PEBBLE

SOFA, CHAIRS, DINETTE CUSHIONS  
 (LEATHER APPEARANCE) (OMBRE PEBBLE)

ACCENTS (OZZI MICA)



CURTAINS (TYPHOON PEBBLE)

ACCENTS (OMBRE SEAL)

# Quality Construction

**THE DETAILS ARE WHAT MAKE ALL THE DIFFERENCE.** Rockwood takes pride in constructing the very best products possible in each price point. From our entry level units to our top of the line products, no short cuts are taken to achieve excellence. From the all-steel I-beams to the residential interior amenities to the vacuum-bonded exteriors, Rockwood products are quality built from the ground-up.



- A** Glued and screwed wood cabinetry
- B** Aluminum dinette frames for added strength and weight savings
- C** 5/8" Tongue & Groove Plywood sub-floor glued and screwed down.
- D** Extra large dinette storage drawers and full extension metal drawer guides in the kitchen
- E** Dexter Torflex Axles:
  - Independent wheel suspension and self-damping action
  - Rubber cushioning eliminates metal-to-metal contact.
  - Forged torsion arm for maximum strength
- Models are also equipped with E-Z Lube® System and Nev-R-Adjust® Brakes.
- F** Enclosed underbelly protects trailer components as well as increasing aerodynamics
- G** Aluminum Frame Construction with high gloss fiberglass exterior and deluxe graphics

Optional White Exterior



## ROOF CONSTRUCTION



Vacuum-bonded radius roof with vaulted ceiling providing Ultraior insulation and more interior height.



4" thick roof with built in insulated A/C ducts



Built strong to enable you to conveniently perform periodic roof maintenance.

## WALL STRENGTH



Structurally engineered materials makes our vacuum-bonded walls some of the strongest in the industry.

## VACUUM-BONDED LAMINATED CONSTRUCTION



Rockwood is one of only a few manufacturers with six sided aluminum framing. Vacuum bonded walls and roof to ensure a well-insulated, light weight, strong structural trailer.

# Rockwood Ultra Lite & Signature

## STANDARDS & OPTIONS

MODELS	UL	S	MODELS	UL	S	MODELS	UL	S
<b>STANDARD PACKAGES INCLUDE:</b>		<b>PKG. A</b>	Residential Serta Mattress	S	S	Solid Wood Cabinet Doors and Drawers	S	S
6 Sided Aluminum Cage Construction	S	S	Outside Speakers	S	S	Upgraded Cabinetry Hardware	S	S
Vacuum Laminated 1 Piece Roof and Walls	S	S	LCD TV With Upgraded Sound Bar Speaker System and	S		Engineered Mold and Mildew Resistant Floor Covering	S	S
5/8" Plywood Tongue and Groove Sub Floor	S	S	Multi-directional Antenna	S	S	Bedroom Carpet	S	S
Aluminum Bed and Dinette Base	S	S	Multi Zone Stereo w/ DVD/CD/Blu Ray/ AM&FM, Plus			Step Mount Vacuum Cleaner	--	S
Fiberglass Exterior with High Gloss Finish	S	S	Bluetooth Control and MP3 Player Hook up (Blu Ray N/A on UL)	S	S	35,000 BTU Floor Ducted Furnace	S	S
High Gloss Front Cap	S	S	Touch Button Control Pad w/ Bluetooth App Control	--	S	15,000 BTU Ducted Roof Air	0	0
Enclosed Underbelly	S	S	WiFi Ranger Sky 4 (LTE ready to create your own WiFi when WiFi			2nd Roof A/C w/ Chill Chaser Heat Strip in Bedroom with		
Thermostatically Controlled Heated Holding Tanks	S	S	is not available. SIM Card and LTE module are sold separately)	S	S	50 Amp Service and Digital Dual Thermostat	0	0
Tinted Bonded Frameless Windows	S	S	Torsion Axle, Rubber-Ryde Suspension	S	S	50 Amp Service with 2nd A/C prep	S	S
Power Awning w/ Adjustable Rain Dump and LED Light Strip	S	S	Polished Alloy Wheels	S	S	Fireplace, Where Available	S	S
LGI *Turning Point Pin Box Hitch	S	S	Spare Tire Carrier & Cover	S	S	110V Ceiling Fan	0	0
Power Landing Legs & Stabilizer Jacks	S	S	Nitro Filled Tires	S	S	Carbon Monoxide Detector	S	S
13,500 BTU Ducted A/C with 50 Amp Service and Prepped for 2nd A/C	S	S	Slam Latch Baggage Doors and Magnetic Door Holds	S	S	12 Volt Power Plug With USB Charging Port	S	S
Upgraded 22" Gas Oven	S	S	Rear Observation Camera Prep w/ Molded Mounting Plate	S	S	CSA (Canadian Standards)	0	0
Microwave Oven	S	S	Solar Panel Prep	S	S	Battery Disconnect Switch	S	S
Recessed Cooktop and Oven w/ Flush Mount Cover	S	S	Rear Ladder	S	S	55 Amp Converter With Charger	S	S
Hidden Hinge Cabinet Doors	--	S	Black Tank Flush	S	S	Flush Mount Ceiling LED 12 Volt Interior Lighting w/		
Residential Full Extension Metal Soft Close Drawer Guides	--	S	MORryde Strut Assist Fold-Out Steps	S	S	Multiple Switches	S	S
Extra Large Double Door 2 Way Refrigerator	S	S*				Interior Floor Light by Entrance Door	S	S
Solid Surface Kitchen Countertops	S	S	<b>INTERIOR FEATURES</b>			Deluxe Tri-Fold Sleeper Sofa	S*	S*
Kitchen Backsplash	S	S	Slatewood Interior	S	S	Push Back Swivel Rocker Recliner (Std. 2889WS, 8299BS)	S*	S*
Flush Mount Stainless Steel Sinks With "High Rise" Lift-Off Faucet	S	S	American Maple Interior	0	0	Lazy Boy Swivel Rocker Recliner (8299BS Only)	--	0*
6 Gallon Quick Recovery Auto Ignition Gas/Electric Water Heater	S	S	Decorative Slide Out Fascia	S	S	Theatre Seating	0*	S*
Shower Miser Water Saver System	S	S	Decorative Cove Trim Along Ceiling and Overhead Cabinets	S	S	Theater Seat ILO Sofa	0*	0*
360 Siphon Black Water Venting	S	S	Screwed and Glued Cabinetry	S	S	Deluxe Interior Window Treatment	S	S

STANDARDS & OPTIONS ARE SUBJECT TO CHANGE.





**MODELS**

	UL	S
Day/Night Pull Shade	S	S
Day/Night Roller Shades	--	O
Stainless Steel Appliances	O	O
9 Cubic Ft. Gas / Electric Refrigerator	--	S*
12 Cubic Foot Auto Gas/Electric Refrigerator W/ Stainless Steel Panels (8299BS)	--	S*
8 Cubic Foot Gas/Electric Refrigerator	S	--
22 Cubic Foot Residential Refrigerator w/ Invertor	O*	O*
12 Cubic Foot Residential Refrigerator w/ Invertor	O*	O*
Decorative Wood Refrigerator Panels	O*	O*
Three Burner High Output Gas Range with Glass Top Cover	S	S
Water-Pur Filtration System	S	S
Counter Top Extension (Per floorplan)	S	S*
Trash Can in Kitchen (Most Models)	--	S
Bathroom Skylight	S	S
Interior Gas and Electric Switches	S	S
Water Heater By-Pass Kit	S	S
Residential Style Porcelain Bowl Foot Flush Toilet	--	S
Maxxair® Ventilation Fan and Vent Cover	S	S
Extra Maxxair® Ventilation and Vent Cover	O	O
King Bed Slide	--	O
Washer/Dryer Prep (2881S, 2891BH, 8288BS, 8299BS, 8290BS Only)	S*	S*
Larger 76" Entry Doors	S	S

**MODELS**

**EXTERIOR FEATURES**

	UL	S
Fully Aluminum Frame (Floor, Sidewall, & Roof)	S	S
Insulation Factors R-7 Side Wall, R-12 Floor and R-14 Roof	S	S
Radius Roof With Vaulted Interior Ceilings	S	S
One Piece Seamless Roofing Membrane	S	S
TV Antenna w/ Cable & Satellite Hook-Up	S	S
Bike Rack Ladder Attachment	O	O
Rear Bike Deck (200 lbs. Max Load)	O	O
Laminated Champagne Color Fiberglass Sidewalls	S	S
Laminated White Fiberglass Sidewalls	O	O
Electric Slide-Out(s)	S	S
Decorative Frame Skirting	S	S
Distinctive Black Exterior Trim	S	S
Power Awning With Adjustable Rain Dump and LED Lighting	S	S
Shielded Awning Covers	--	O
Awning Slide Topper	O	O
30" Primary Entrance Door	S	S
Friction Hinge Entrance Door	S	S
Lighted Entry Step	S	S
Large Grab Handles	S	S
Tinted Bonded Frameless Windows	S	S
Thermo Pane Window Upgrade	O	O
Outside RVQ Grill w/ LP Hookup and Work Table	S	S

**MODELS**

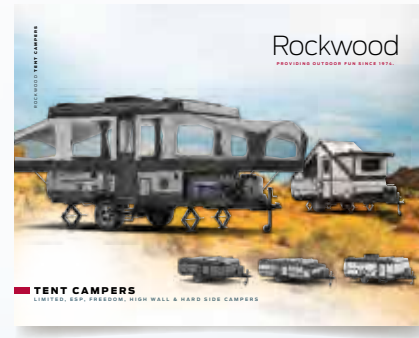
	UL	S
Outside Shower	S	S
Front Outside "Trunk" Storage Separated From Heated Pass Thru Storage Compartment	S	S
Outside Antifreeze Inlet for Convenient Winterizing	S	S
Slam Latches on Most Exterior Storage Doors	S	S
Magnetic Storage Door Latches	S	S
Two 30 lb Gas Bottles	S	S
Enclosed Gas Bottles w/ Storage Door Access	S	S
Surface Coated Steel I-Beam Frame	S	S
Power Front Jack	S	S
4.0 Leveling Jacks	O	O
Easy Lube Axles & Never Adjust Brakes	S	S
15" Tires	S	S
Nautilus Water Management System	S	S

UL = ULTRA LITE FIFTH WHEEL, S = SIGNATURE FIFTH WHEEL, S = STANDARD, O = OPTIONAL, -- NOT AVAILABLE, \* = SELECTED MODELS

Look for our other popular lines of Rockwood camping trailers.



Rockwood Geo Pro



Rockwood Tent Campers



Rockwood Travel Trailers

**FREE MEMBERSHIP**  
to Forest River Owners' Group

[www.forestriverfrog.com](http://www.forestriverfrog.com)



**PRE-DELIVERY INSPECTION FACILITY**

20,000 square feet of quality assurance. The bare essentials for a premium product. This state-of-the-art facility gives immediate daily feedback to production for quality assurance in every unit built.

**Specification Definitions**

**GVWR (Gross Vehicle Weight Rating)** - is the maximum permissible weight of the unit when fully loaded. It includes all weights, inclusive of all fluids, cargo, optional equipment and accessories. For safety and product performance do NOT exceed the GVWR.

**GAWR (Gross Axle Weight Rating)** - is the maximum permissible weight, including cargo, fluids, optional equipment and accessories that can be safely supported by a combination of all axles.

**UVW (Unloaded Vehicle Weight)\*** - is the typical weight of the unit as manufactured at the factory. It includes all weight at the unit's axle(s) and tongue or pin and LP Gas. The UVW does not include cargo, fresh potable water, additional optional equipment or dealer installed accessories.

\*Estimated average based on standard build optional equipment.

**CCC (Cargo Carrying Capacity)\*\*** - is the amount of weight available for fresh potable water, cargo, additional optional equipment and accessories. CCC is equal to GVWR minus UVW. Available CCC should accommodate fresh potable water (8.3 lbs per gallon). Before filling the fresh water tank, empty the black and gray tanks to provide for more cargo capacity.

\*\* Estimated average based on standard build optional equipment

Each Forest River RV is weighed at the manufacturing facility prior to shipping. A label identifying the unloaded vehicle weight of the actual unit and the cargo carrying capacity is applied to every Forest River RV prior to leaving our facilities.

The load capacity of your unit is designated by weight, not by volume, so you cannot necessarily use all available space when loading your unit.

**Rockwood Warranty. Our Promise.**

**FOR DETAILS ON ROCKWOOD'S COMPLETE WARRANTY PROGRAM, SEE YOUR ROCKWOOD DEALER.** When it comes to backing products with the same quality and commitment it does when it begins the manufacturing process, the only name you have to remember when you're looking for a recreational vehicle is Rockwood. Rockwood offers the following additional limited warranties to the original purchasers. Consult written warranty for details.

1. Twelve-year vinyl roof warranty,
2. Two-year fiberglass warranty,
3. Ten-year Torflex® axle warranty,
4. One-year bumper to bumper warranty



**Learn More**  
Scan this barcode using a QR Reader on your smart phone to learn more about Forest River.



A Berkshire Hathaway company.

201 WEST ELM MILLERSBURG, IN 46543 [WWW.FORESTRIVERINC.COM/ROCKWOOD](http://WWW.FORESTRIVERINC.COM/ROCKWOOD) 574.642.2640

**CUSTOMER SATISFACTION**



[www.ForestRiverBuyLocal.com](http://www.ForestRiverBuyLocal.com)

All information contained in this brochure is believed to be accurate at the time of publication. However, during the model year, it may be necessary to make revisions and Forest River, Inc., reserves the right to make all such changes without notice, including prices, colors, materials, equipment and specifications as well as the addition of new models and the discontinuance of models shown in this brochure. Therefore, please consult with your Forest River dealer and confirm the existence of any materials, design or specifications that are material to your purchase decision. Litho. U.S.A. FOR 1592 W: 2018.12.01

YOUR ROCKWOOD DEALER

**24/7 EMERGENCY  
ROADSIDE ASSISTANCE  
WITH VEHICLE PURCHASE\***

TOWING  
JUMP-STARTS  
TIRE CHANGES  
FLUID DELIVERY  
LOCKOUT  
SERVICE

WINCH-OUT  
MOBILE MECHANIC  
TECHNICAL  
SUPPORT  
DEALER LOCATOR  
SERVICES



\*VALID FOR 1 YEAR FROM DATE OF PURCHASE