

# Sandpiper

LUXURY DESTINATION TRAILERS

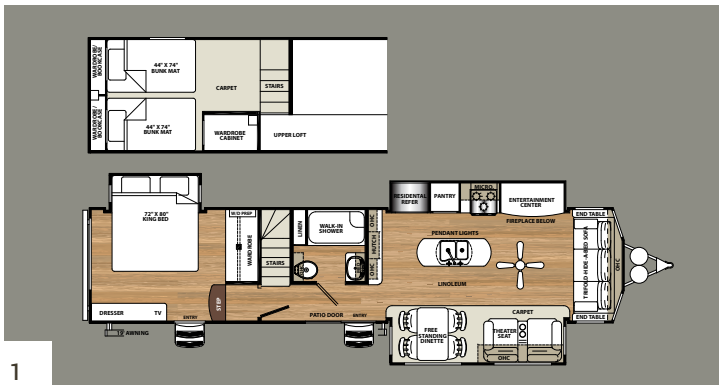


399LOFT

ASH  
DECOR

## GROUNDBREAKING

The 399LOFT is one of Sandpiper's amazing creations for family camping. This loft unit provides a private upstairs room for the children, totally tucked away and private. The best thing, though, is that this floorplan still offers an amazing kitchen and living room at the same time. This unit far outshines your standard bunkhouse layout.



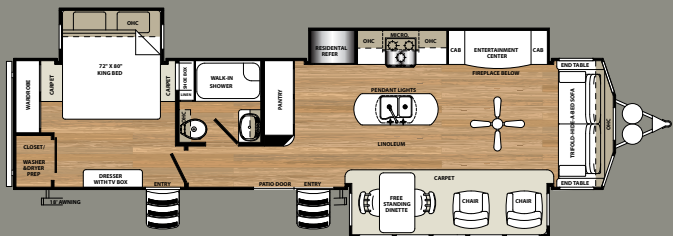


# 401FLX

CEDAR  
DECOR

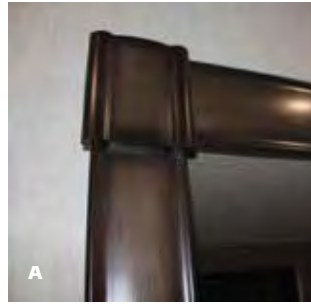
## THOUGHTFUL DESIGN

The 401FLX is the ultimate “open concept” floorplan. It offers opposing slideouts in the living area that creates a great floor space for relaxing. It also offers ample pantry space, washer/dryer prep and a great island kitchen. The “atrium” window layout on the door side offers you a great view of nature’s beauty.



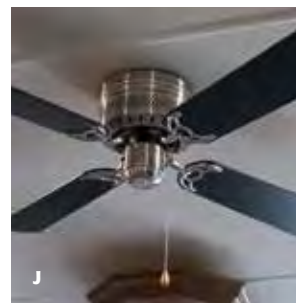
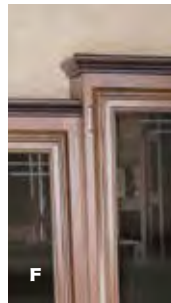


# INTERIOR FEATURES



- A Handcrafted fascia gives the slide-out a distinguished look
- B Porcelain foot flush toilet, easy to use, easy to clean
- C Exclusive Denver Mattress
- D The Tri-fold hide-a-bed sofa offers you and your guests more sleeping options
- E LED HDTV with premium soundbar
- F Mocha accented crown molding gives the Sandpiper kitchen a truly residential finish

- G Real wood drawers on soft close, full extension, ball bearing drawer guides
- H Contemporary master bedroom headboard with integrated LED lighting
- I Theater seating with LED lighting.
- J Contemporary ceiling fan
- K Enjoy the warmth and comfort of the electric fireplace
- L The Sandpiper Signature package includes stainless steel appliances



H

I

J

K

L



# EXTERIOR FEATURES



A



B



C



A 60" Patio door with tinted glass and vertical blinds

B Wall mounted digital thermostat

C ABS Tank cover and 2-30 Lb. LP tanks.

D Optional exterior kitchen available on the 404QBWD includes a single lever faucet, deep bowl sink, mini refrigerator, abundant storage and bumper mounted swing arm gas grill.

E Dexter auto adjusting brakes.

F Radiused triple entry steps

G The radius roof line of the Sandpiper Destination series allows for a 99" inch interior height.

H Gel coat fiberglass protects from UV rays and prevents yellowing and cracking.

I Drip rail with extra long drip spouts help prevent black streaking

J 16" E-Rated tires with aluminum rims

K Heated and enclosed underbelly protects your coach and improved airflow allows for a sturdier ride

L OAV control panel allows you to do everything from operate your awning and lights to monitoring holding tank levels



D



E



F



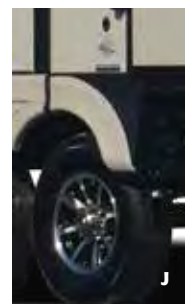
G



H



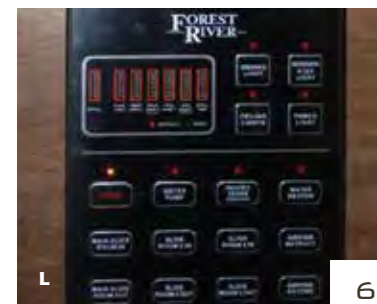
I



J



K

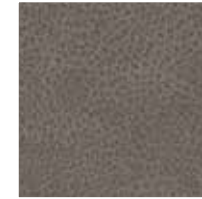


L

# STANDARDS AND OPTIONAL FEATURES

## DECOR OPTIONS

ASH INTERIOR



CEDAR INTERIOR



### EXTERIOR FEATURES

- Gel coated color matched exterior fiberglass
- Enclosed and heated dump valves
- Large tinted windows with 80/20 UV prohibitor
- Dexter auto adjust brakes
- Radius triple steps with 9" riser (no pinched fingers)
- Dometic™ "One-Touch" electric awning with adjustable arms, and integrated LED light
- 16" Radial tires-E Rated
- Automotive-style fender skirts
- Hitch light
- Porch light with interior switch
- 30 lb. double LP tanks with auto change over
- 2 exterior speakers
- Rain gutters with extra long drip spouts (prevents black streaking)
- Exterior folding grab handle
- 60" Dual pane patio door

### INTERIOR FEATURES

- 99" interior height with 6'4" slide heights
- Denver mattress
- Residential stain resistant carpet
- Rustic Plank pattern Beauflor® linoleum
- Swivel glider recliners (where applicable)
- Two color coordinated interiors (Ash, Cedar)

- Full extension ball bearing drawer glides
- Stainless steel under mounted kitchen sink
- Washer/dryer prep (select floorplans)
- Handmade cabinetry with screwed lumber core stile construction
- Residential countertops
- Recessed residential LED lighting throughout
- Colored shower surround with etched tile pattern
- Upgraded adjustable shower head with shelf
- Accent paneling in slideouts
- Accent lighting over dinette
- Walk-in shower (select models)
- Crown molding over kitchen cabinets
- Extra large picture windows throughout
- Vented side windows in slideouts
- TV antenna with booster
- Solid wood drawer fronts with birch sides
- Upgraded raised panel cabinet doors with designer rails
- Bedroom slideout fascia
- 20 cu. ft. stainless steel refrigerator
- Stainless steel kitchen package
- 40" LED HDTV
- Residential carpeting
- Trash receptacle in kitchen

- Designer window treatment accented per decor
- Ceiling fan
- Hide-a-bed sofa with tri-fold

### APPLIANCES/ SYSTEMS

- Ducted 15K A/C
- Digital thermostat for living room and bedroom A/C
- Interior thermostat for heating and cooling
- Flush floor hydraulic slideouts (per floorplan)
- Satellite and cable hookup with RG-6 cable for high quality picture
- Porcelain foot flush toilets
- Full coach water filtration system
- 10 Gal. DSI water heater
- 65 Amp converter

### CONSTRUCTION

- Welded aluminum-framed, vacuum bonded laminated superstructure
- 2" x 3" floor joists 12" on center
- 5/8" tongue & groove plywood floor decking
- 3/8" roof decking (full walk-on roof)
- Cambered powder coated frame with rust prohibitor
- Fully enclosed underbelly
- 5" truss roof rafters
- R-10 sidewall construction

### POPULAR OPTIONS

- Free standing dinette IPO booth dinette (404QBWD)
- Detachable hitch
- All weather exterior kitchen (404QBWD)
- Hide a bed IPO glide sofa
- 2<sup>nd</sup> air conditioner in bedroom (ducted)
- Fantastic fan w/rain sensor in bunk room
- Fantastic fan w/rain sensor in kitchen
- Fantastic fan w/rain sensor in living room
- Fantastic fan w/rain sensor in bathroom
- Fantastic fan w/rain sensor in half bathroom
- Ceiling paddle fan w/wall switch 12V (bedroom only) (N/A 399LOFT)
- Heated holding tanks (12v)
- R-38e roof & all floors insulation
- Stab jacks (4)
- Roof ladder
- Slide room awnings (all slides)
- Theater seating IPO recliners (where available)
- Non self contained (no holding tanks w/ house type toilet)
- Central vacuum
- 2 Folding dinette chairs

### YOUR SAFETY

- Smoke alarm
- Fire extinguisher
- Breakaway switch (battery hook-up required)
- Dead-bolt lock on entry door
- Liquid propane (LP) gas detector
- Fire escape windows

### POLAR TECH PACKAGE

- Thermal pane windows
- Heated holding tanks
- R-38e roof & all floors insulation
- 40K BTU furnace

### FREE PREMIUM PLUS PACKAGE

(LIMITED TIME OFFER)

- Premium Corian solid surface kitchen countertops
- Roller shades throughout
- Gas cooktop with stainless steel oven
- King Wifi Extender System

### SANDPIPER SIGNATURE PACKAGE

- LED lighting throughout
- Denver pillowtop mattress
- 50 Amp service
- "One Touch" Dometic® electric awning w/LED lights
- Stainless steel kitchen package
- 15K BTU air conditioner with prep for second A/C
- Ceiling fan in living room
- 50 amp service
- Gel coated fiberglass exterior
- 10 gal. G/E water heater w/DSI
- Residential pullout kitchen faucet
- 20 Cu. Ft. stainless steel refrigerator
- Tinted dual paned patio door
- 40" LED HDTV (most models)
- Premium soundbar with DVD
- Washer/dryer prep (where available)
- Power fan in bathroom(s)
- Tri-fold hide-a-bed sofa
- Wood plank pattern Beauflor® linoleum



## BUILT TO LAST

The Sandpiper is built to last using only the best materials to ensure that your coach is in it for the long haul. Careful engineering, well appointed craftsmanship and an uncompromising sense of pride go into every destination trailer that we produce. Rest assured that your Sandpiper is built for luxury living.



- A** ROLLED ALUMINUM SIDE SKIRTING
- B** TINTED SAFETY GLASS WINDOWS (80%)
- C** THERMOSTAT CONTROLLED DUCTED 15K BTU AIR CONDITIONING
- D** DEXTER AXLES WITH AUTO ADJUST BRAKES
- E** LAMINATED VACUUM BONDED ALUMINUM SIDEWALLS
- F** 16" E-RATED RADIAL TIRES (STANDARD)
- G** TRIPLE ENTRY STEPS
- H** SEAMLESS ONE PIECE ROOFING (12 YR. WARRANTY)
- I** 2" BLOCK FOAM INSULATION
- J** DELUXE STAIN RESISTANT CARPET WITH PADDING
- K** 3/8" ROOF DECKING (FULL WALK-ON ROOF)
- L** 5/8" TONGUE AND GROOVE PLYWOOD FLOORING
- M** ENCLOSED UNDERBELLY

## SOLID CONSTRUCTION

- N** I-BEAM POWDER-COATED FRAME W/ RUST INHIBITOR
- O** 60" DUAL PANED PATIO DOOR WITH TINTED GLASS AND VERTICAL BLINDS
- P** PAINTED COLOR MATCHED GEL-COATED FIBERGLASS EXTERIOR
- Q** TWO (2) 30 LB. LP TANKS WITH ABS COVER

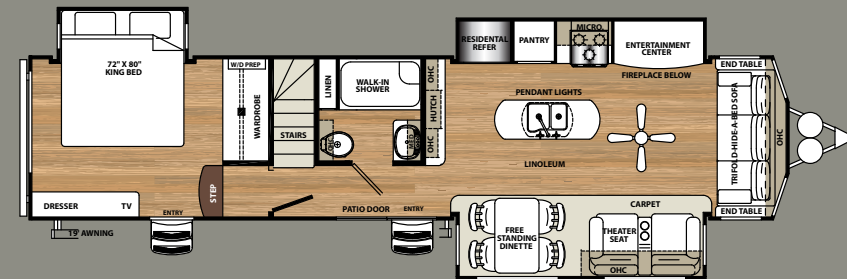
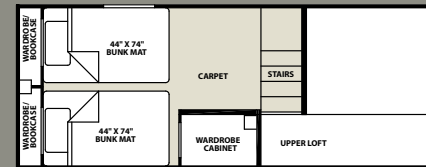


# Sandpiper



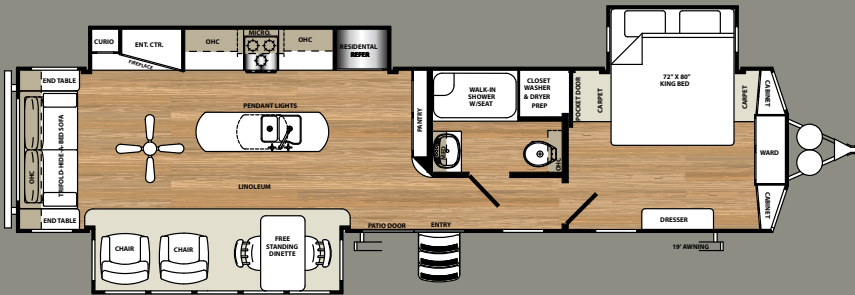
## FLOORPLANS AND SPECIFICATIONS

MODEL	399LOFT	393RL	401FLX	403RD	404QBWD
<b>HITCH</b>	1,619	1,379	1,841	1,268	1,335
<b>UVW</b>	10,998	10,726	10,830	11,009	10,967
<b>GVWR</b>	13,619	13,379	13,841	13,268	13,335
<b>CARGO</b>	2,621	2,653	3,011	2,259	2,368
<b>LENGTH</b> (BUMPER TO HITCH)	40'11"	41'4"	40'7"	42'3"	42'2"
<b>HEIGHT</b>	13'2"	13'2"	13'2"	13'2"	13'2"
<b>AWNING</b>	19'	19'	17'	20'	20'
<b>GRAY</b>	104	104	156	104	104
<b>BLACK</b>	52	52	52	52	104
<b>FRESH</b>	60	60	60	60	60

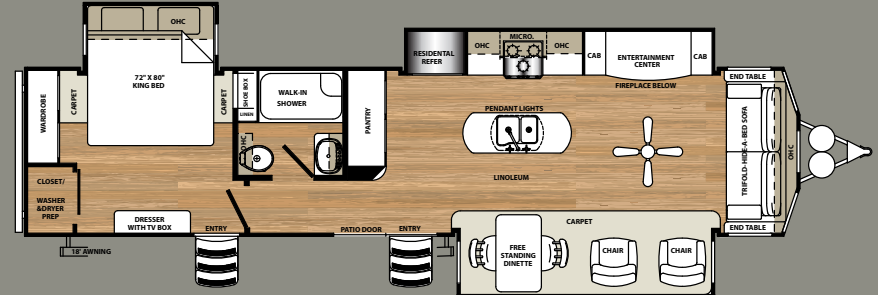


**399LOFT**

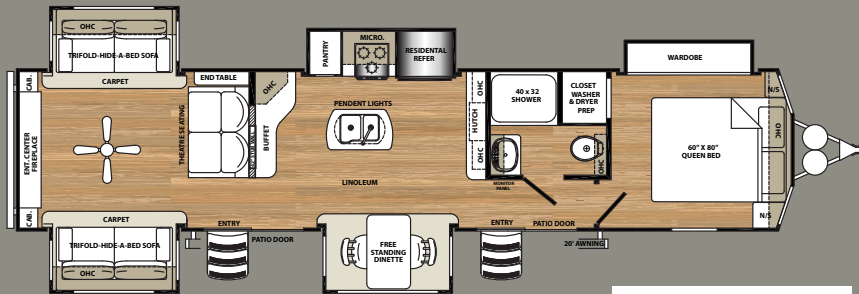
PLEASE SEE BACK COVER FOR MORE INFORMATION REGARDING WEIGHTS.



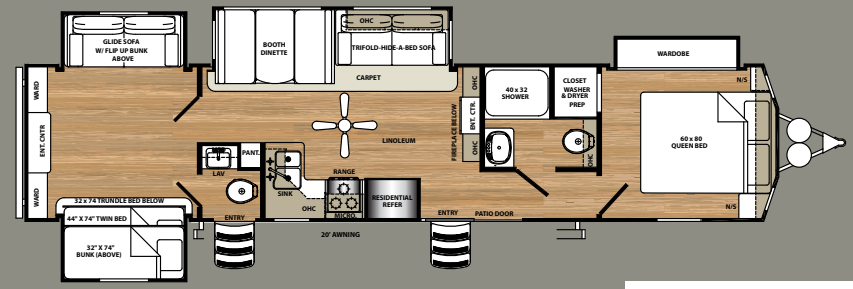
393RL



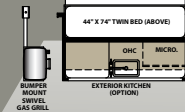
401FLX



403RD



404QBWD



# Sandpiper



THE OPTIONAL EXTERIOR KITCHEN AVAILABLE ON THE 404QBWD.

THIS KITCHEN INCLUDES A SINGLE LEVER FAUCET, DEEP BOWL SINK, MINI REFRIGERATOR, ABUNDANT STORAGE AND BUMPER MOUNTED SWING ARM GAS GRILL.

GVWR (Gross Vehicle Weight Rating) - is the maximum permissible weight of the unit when fully loaded. It includes all weights, inclusive of all fluids, cargo, optional equipment and accessories. For safety and product performance do NOT exceed the GVWR.

GAWR (Gross Axle Weight Rating) - is the maximum permissible weight, including cargo, fluids, optional equipment and accessories that can be safely supported by a combination of all axles.

UVW (Unloaded Vehicle Weight)\* - is the typical weight of the unit as manufactured at the factory. It includes all weight at the unit's axle(s) and tongue or pin and LP Gas. The UVW does not include cargo, fresh potable water, additional optional equipment or dealer installed accessories.

\*Estimated Average based on standard build optional equipment.

CCC (Cargo Carrying Capacity)\*\* - is the amount of weight available for fresh potable water, cargo, additional optional equipment and accessories. CCC is equal to GVWR minus UVW. Available CCC should accommodate fresh potable water (8.3 lbs per gallon). Before filling the fresh water tank, empty the black and gray tanks to provide for more cargo capacity.

\*\* Estimated average based on standard build optional equipment

Each Forest River RV is weighed at the manufacturing facility prior to shipping. A label identifying the unloaded vehicle weight of the actual unit and the cargo carrying capacity is applied to every Forest River RV prior to leaving our facilities.

The load capacity of your unit is designated by weight, not by volume, so you cannot necessarily use all available space when loading your unit.

All information contained in this brochure is believed to be accurate at the time of publication. However, during the model year, it may be necessary to make revisions and Forest River, Inc., reserves the right to make all such changes without notice, including prices, colors, materials, equipment and specifications as well as the addition of new models and the discontinuance of models shown in this brochure. Therefore, please consult with your Forest River dealer and confirm the existence of any materials, design or specifications that are material to your purchase decision.



# Sandpiper



### PRE-DELIVERY INSPECTION FACILITY

20,000 square feet of quality assurance. The bare essentials for a premium product. This state-of-the-art facility gives immediate daily feedback to production for quality assurance in every unit built.



[www.ForestRiverBuyLocal.com](http://www.ForestRiverBuyLocal.com)

24/7 EMERGENCY ROADSIDE ASSISTANCE WITH VEHICLE PURCHASE*	
TOWING	WINCH-OUT
JUMP-STARTS	MOBILE MECHANIC
TIRE CHANGES	TECHNICAL
FLUID DELIVERY	SUPPORT
LOCKOUT SERVICE	DEALER LOCATOR SERVICES
VALID FOR 1 YEAR FROM DATE OF PURCHASE	

**FREE MEMBERSHIP**  
to Forest River Owners' Group

[www.forestriverfrog.com](http://www.forestriverfrog.com)



### Learn More

Scan this barcode using a QR Reader on your smart phone to learn more about Forest River.



A Berkshire Hathaway company.

Forest River, Inc.  
55470 C.R. 1, Elkhart, IN 46515  
(574) 389-4600  
[www.forestriverinc.com/Sandpiper](http://www.forestriverinc.com/Sandpiper)  
[www.forestriveraccessories.com](http://www.forestriveraccessories.com)

### YOUR LOCAL SANDPIPER DEALER