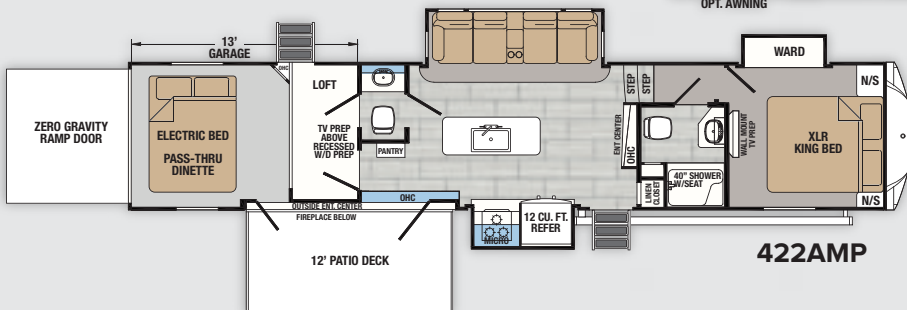
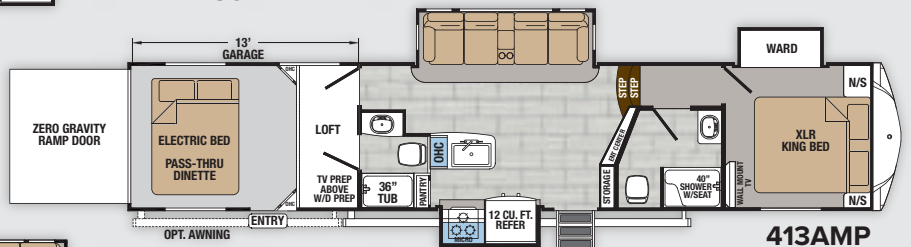
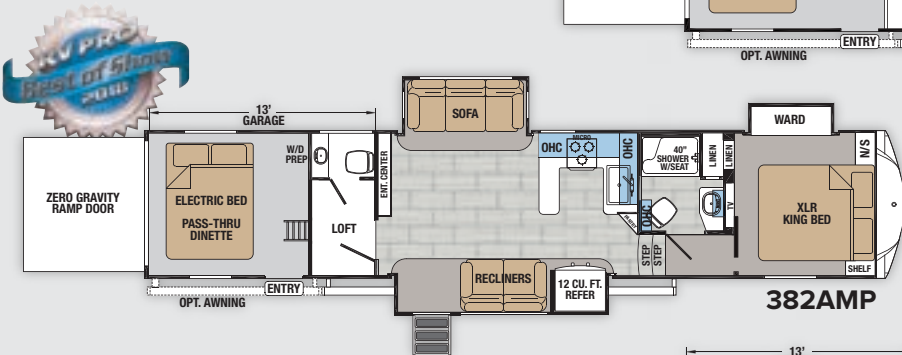
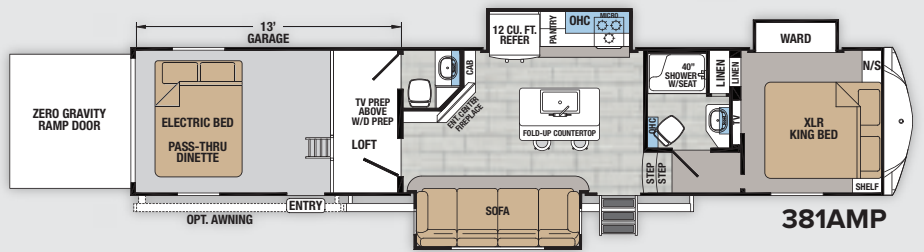
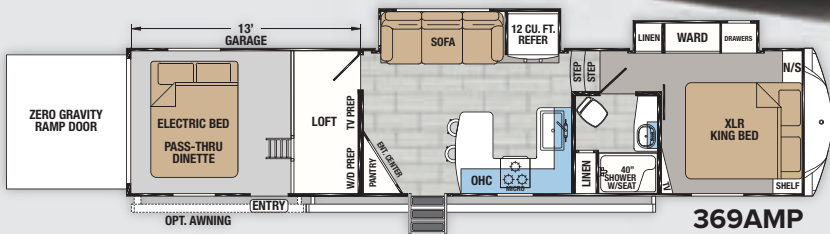


XLR TOY HAULERS THUNDERBOLT



See XLR videos and virtual tours at www.forestriverinc.com/XLR



XLR TOY HAULERS THUNDERBOLT

STANDARDS & OPTIONS

INTERIOR DECOR

- Linen ■ Mica ■ Gunmetal

EXTERIOR

- 21,000 Lb. Pin Box
- Roof Solar Power Pre-wired
- Backup Camera Prep
- Black Tank Flush
- 80% Tint Radius Safety Glass Windows
- 30 Lb. LP Bottles (2)
- 30" Radius Entry Door
- Exterior Marine Grade Speakers
- High Capacity Water Pump
- Battery Disconnect Switch
- Oversized Tank Capacities
- Collapsible Ladder

KITCHEN

- Modern Sink & Grate Style Sink Cover
- Residential Faucet
- Residential Solid Surface Countertops
- Convection Microwave
- Three Burner Cooktop and Oven with Grates
- 12 Cu. Ft. Gas/Electric Refrigerator

BATHROOM

- Skylight Over Shower
- Medicine Cabinet with Mirror
- Porcelain Toilet
- Residential Shower Curtain
- Linen Storage
- Towel Hooks

BEDROOM

- Master Suite with 66" x 80" XLR King Bed
- Solid Wood Master Suite Bedroom Door
- Oversized Under-bed Storage
- Residential Bedspring, Headboard, Pillows
- TV and Cable Prep
- USB and 110V Outlets on Dual Nightstands

INTERIOR

- Decorative Glass Cabinet Inserts (Kitchen Upper)
- Solid Core Cabinet Stiles
- Hidden Hinge Residential Cabinet Hardware
- Full Extension Ball Bearing Drawer Glides
- Large Panoramic Windows
- Residential Power Recliners with USB Chargers
- Hardwood Maple Cabinet Doors
- Triple Zone - CD/DVD/Bluetooth Sound System
- JBL Speakers
- LCD Living Room TV
- 100 AMP Converter
- Washer/Dryer Prep
- 7' 6" Main Slide Room Height
- Crown Molding
- Dyson Cordless Vacuum

CONSTRUCTION

- High Gloss Gelcoat Fiberglass Exterior
- Two-Tone Automotive Painted Fiberglass Cap
- One-piece Roof Membrane with 12 Year Warranty
- Ducted Roof A/C Distribution System

- Insulated Storage Compartment Doors
- Magnetic Storage and Entry Door Holdbacks
- Laminated and Insulated Rear Ramp Door
- Vacuum-bonded, Aluminum-Framed Sidewalls
- Laminated and Insulated Slide End Walls & Roof
- Residential Wood Framed Main Floor
- 5" Radius Wood Framed Roof Rafter
- Gas/Electric Water Heater

FULL BODY PAINT (w/ Premium Gel Coat Sidewalls)

- Black Pearl ■ Freedom Blue ■ HD Orange
- Victory Red ■ Acid Green ■ Custom

POPULAR OPTIONS

- Second Electric Awning with Smart Arm Controls
- Second 15K BTU Roof A/C (Bedroom, Garage)
- Energy Management System with Three High Efficiency A/Cs
- Multiplex System
- Three Season Door IPO Screen Wall/Tent Wall
- Girard Tankless Water Heater IPO Gas/Electric
- VIP Party Deck Steps
- 110V Residential Refrigerator Upgrade with Inverter

EXTENDED SEASON PACKAGE (Mandatory)

- 12V Heated Tank Pads
- Radiant Foil Insulation Technology - Roof, Slide Floors
- Front Cap and Underbelly
- MAXXAir Power Roof Vent - Main Bath
- Privacy Screen Wall
- Window Inserts
- Fully Enclosed Underbelly with Rotoflex Heat Duct

ULTIMATE PACKAGE 3 (Mandatory)

- 5.5kW Onan Generator
- Mobile Fuel Station
- Solar Roof Prep
- Single Electric Bed with Max Clearance Pass-thru Dinette
- 50AMP Service with Transfer Switch
- One Touch Hydraulic 6-Point Auto Leveling System
- MORRYde CRE 3000 Suspension Enhancement
- Rotoflex Pin Box Upgrade
- Zero Gravity VIP Party Deck
- Rear Electric Awning
- Upgraded Main Entry Step
- Upgraded Main Awning with LED Lights
- Upgraded Main Entry Door with Window and Friction Hinge
- Aluminum Wheels
- 7,000 Lb. E-Z Lube™ and Nev-R-Adjust™ Axles
- Radial Tires with Nitrofill and No Fuss Warranty
- Full Sized Spare Tire
- 15K BTU Ducted Roof A/C
- 5,000 Lb. Rated Cargo D-Rings

MODEL	369AMP	381AMP	382AMP	413AMP	422AMP
Hitch Weight (lbs.)	3140	3335	3760	3323	3643
UVW (lbs.)	13644	15449	15729	16280	16364
Cargo Capacity (lbs.)	3496	5551	5271	4720	4636
Exterior Length	39' 10"	44'	43' 9"	44' 6"	44' 6"
Exterior Height	13' 4"	13' 4"	13' 4"	13' 4"	13' 4"
Exterior Width	102"	102"	102"	102"	102"
Fresh Water (gal.)	150	102	158	158	158
Grey Water (gal.)	64	100	80	118	86
Black Water (gal.)	32	80	80	86	86
Awning Size	18'	20'	20'	20'	24'

GVWR (Gross Vehicle Weight Rating) - is the maximum permissible weight of the unit when fully loaded. It includes all weights, inclusive of all fluids, cargo, optional equipment and accessories. For safety and product performance do NOT exceed the GVWR.

GAWR (Gross Axle Weight Rating) - is the maximum permissible weight, including cargo, fluids, optional equipment and accessories that can be safely supported by a combination of all axles.

UVW (Unloaded Vehicle Weight) - is the typical weight of the unit as manufactured at the factory. It includes all weight at the unit's axle(s) and tongue or pin and LP Gas. The UVW does not include cargo, fresh potable water, additional optional equipment or dealer installed accessories.

*Estimated Average based on standard build optional equipment.

CCC (Cargo Carrying Capacity)** - is the amount of weight available for fresh potable water, cargo, additional optional equipment and accessories. CCC is equal to GVWR minus UVW. Available CCC should accommodate fresh potable water (8.3 lbs per gallon). Before filling the fresh water tank, empty the black and gray tanks to provide for more cargo capacity.

**Estimated average based on standard build optional equipment.

Each Forest River RV is weighed at the manufacturing facility prior to shipping. A label identifying the unloaded vehicle weight of the actual unit and the cargo carrying capacity is applied to every Forest River RV prior to leaving our facilities. The load capacity of your unit is designated by weight, not by volume, so you cannot necessarily use all available space when loading your unit.

XLR Thunderbolt by Forest River

2421 Century Drive ■ Goshen, IN 46528 ■ E-mail: XLRinfo@forestriverinc.com
 Phone: 574-642-0438 ■ www.forestriverinc.com/XLR
 www.forestriveraccessories.com ■ #XLRtoyhaulers



Learn More
 Scan this barcode using a QR Reader on your smart phone to learn more about Forest River.

