

SALEM VILLA

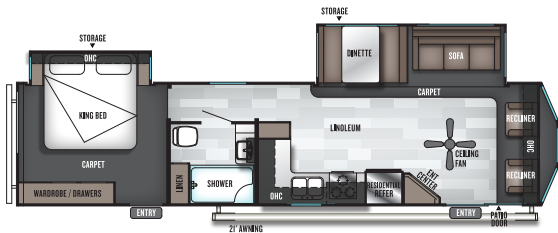


**SALEM**

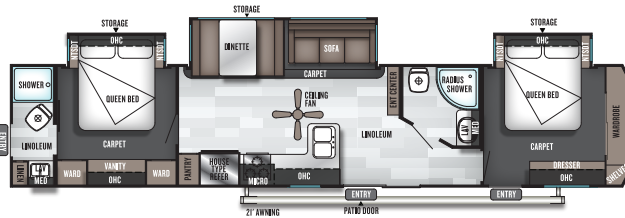
*Villa*

BY FOREST RIVER

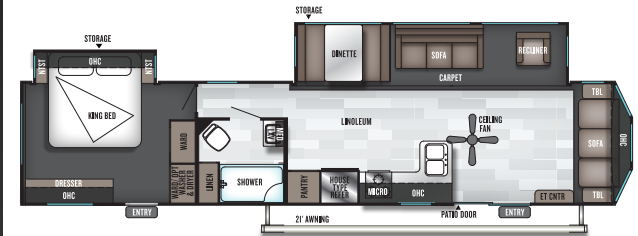




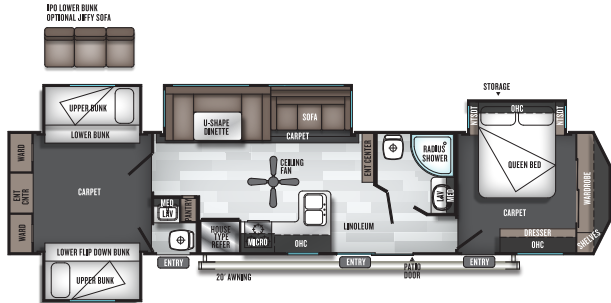
**353FLFB** CLASSIC SERIES UVW 8620



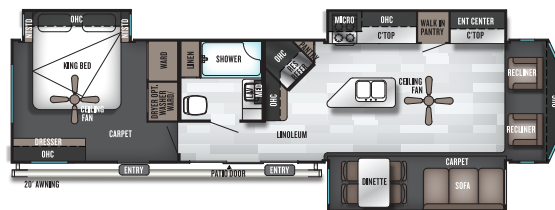
**4002Q** CLASSIC SERIES UVW 10240



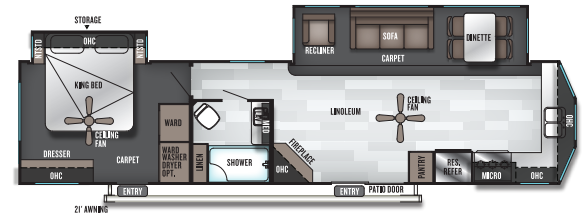
**40FDEN** CLASSIC SERIES UVW 9720



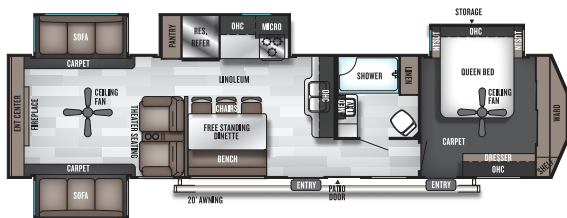
**42QBQ** CLASSIC SERIES UVW 11700



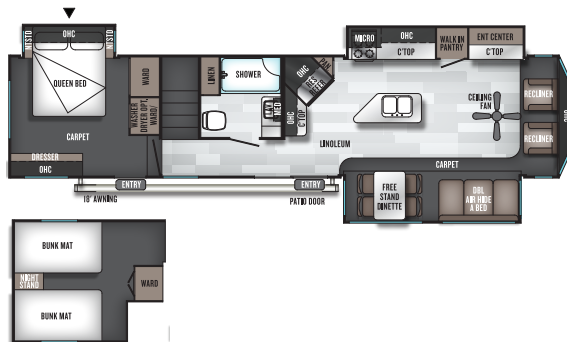
**393FLT** ESTATE SERIES UVW 10970



**394FKDS** ESTATE SERIES UVW 10075



**395RET** ESTATE SERIES UVW 11298



**4092BFL** ESTATE SERIES UVW 11853



**42DL** GRAND VILLA UVW 12660

	<b>353FLFB</b>	<b>4002Q</b>	<b>40FDEN</b>	<b>42QBQ</b>	<b>393FLT</b>	<b>394FKDS</b>	<b>395RET</b>	<b>4092BFL</b>	<b>42DL</b>
UVW	8620	10240	9720	11700	10970	10075	11298	11853	12660
Hitch Wt.	1290	1260	1295	1325	1535	1555	1468	1605	1855
Ext. Length	38'3"	43'7"	42'6"	42'10"	40'5"	40'8"	40'10"	41'8"	41'8"
Ext. Height	11'11"	12'3"	11'11"	12'3"	12'8"	12'8"	12'8"	13'4"	13'4"
Fresh Water	39	39	40	40	39	39	39	39	40
Gray Water	50	90	40	80	80	90	80	80	80
Black Water	40	80	40	80	40	40	40	40	40
Awning Size	21'	21'	21'	20'	21'	21'	21'	18'	20'

VILLA SERIES

**360° TOURS**



<https://i.ead/bbi/vg>





42DL (SHOWN IN OYSTER DECOR)



42QBQ (SHOWN IN MARBLE DECOR)

# DETAILS MATTER.

WHERE AFFORDABILITY  
AND LUXURY COLLIDE.



VILLA



OTHER BRANDS

### Housekeeping matters.

Our central vacuum system helps with quick and easy cleanup. Featuring a hypo-allergenic bag equaling less dust and better than home feeling.



VILLA

### Solid Surface Matters.

Our LG® solid surface counter-tops are much easier to clean, more resistant to staining, and certainly catch the eye.



OTHER BRANDS

### Appliances matter.

When practicality and beauty collide, you have kitchens that you truly enjoy preparing meals in.



OTHER BRANDS



VILLA



VILLA

### Warmth matters.

Our 30" built in fireplace with crystals is not only functional, but with several color options, it is a stunning addition to your luxury "getaway".



OTHER BRANDS



9" PILLOW-TOP



OTHER BRANDS

### Sleep matters.

Camping has always been associated with bad mattresses, until now! Meet your big days head on, after a night on our thick, pillow-top Denver® mattresses.

**VISIT FORESTRIVERINC.COM/SALEM**

TO EXPERIENCE COMPLETE  
STANDARDS & MUCH MORE

## SPECIFICATION DEFINITIONS

**GVWR (Gross Vehicle Weight Rating)** - is the maximum permissible weight of the unit when fully loaded. It includes all weights, inclusive of all fluids, cargo, optional equipment and accessories. For safety and product performance do NOT exceed the GVWR.

**GAWR (Gross Axle Weight Rating)** - is the maximum permissible weight, including cargo, fluids, optional equipment and accessories that can be safely supported by a combination of all axles.

**UVW (Unloaded Vehicle Weight)\*** - is the typical weight of the unit as manufactured at the factory. It includes all weight at the unit's axle(s) and tongue or pin and LP Gas. The UVW does not include cargo, fresh potable water, additional optional equipment or dealer installed accessories.

\*Estimated average based on standard build optional equipment.

**CCC (Cargo Carrying Capacity)\*\*** - is the amount of weight available for fresh potable water, cargo, additional optional equipment and accessories. CCC is equal to GVWR minus UVW. Available CCC should accommodate fresh potable water (8.3 lbs per gallon). Before filling the fresh water tank, empty the black and gray tanks to provide for more cargo capacity.

\*\* Estimated average based on standard build optional equipment

Each Forest River RV is weighed at the manufacturing facility prior to shipping. A label identifying the unloaded vehicle weight of the actual unit and the cargo carrying capacity is applied to every Forest River RV prior to leaving our facilities.

The load capacity of your unit is designated by weight, not by volume, so you cannot necessarily use all available space when loading your unit.

# THE SALEM LINE-UP



SALEM



SALEM CRUISE LITE



SALEM VILLA | VILLA ESTATE



SALEM HEMISPHERE

## CUSTOMER SATISFACTION



[www.ForestRiverBuyLocal.com](http://www.ForestRiverBuyLocal.com)

**FREE MEMBERSHIP**  
to Forest River Owners' Group

[www.forestrivermag.com](http://www.forestrivermag.com)



**Learn More**  
Scan this barcode using a QR Reader on your smart phone to learn more about Forest River.



A Berkshire Hathaway company.

Forest River, Inc. 55470 C.R. 1 Elkhart, IN 46515 | (574) 533-5934  
[www.forestriverinc.com/Salem](http://www.forestriverinc.com/Salem) | [www.forestriveraccessories.com](http://www.forestriveraccessories.com)



### PRE-DELIVERY INSPECTION FACILITY

20,000 square feet of quality assurance. The bare essentials for a premium product. This state-of-the-art facility gives immediate daily feedback to production for quality assurance in every unit built.

### 24/7 EMERGENCY ROADSIDE ASSISTANCE WITH VEHICLE PURCHASE\*

- |                |                 |
|----------------|-----------------|
| TOWING         | WINCH-OUT       |
| JUMP-STARTS    | MOBILE MECHANIC |
| TIRE CHANGES   | TECHNICAL       |
| FLUID DELIVERY | SUPPORT         |
| LOCKOUT        | DEALER LOCATOR  |
| SERVICE        | SERVICES        |



\*VALID FOR 1 YEAR FROM DATE OF PURCHASE

### YOUR SALEM DEALER

2019