

WILDWOOD LODGE / DLX



WE DON'T WAIT FOR THE FUTURE. **WE BUILD IT!**

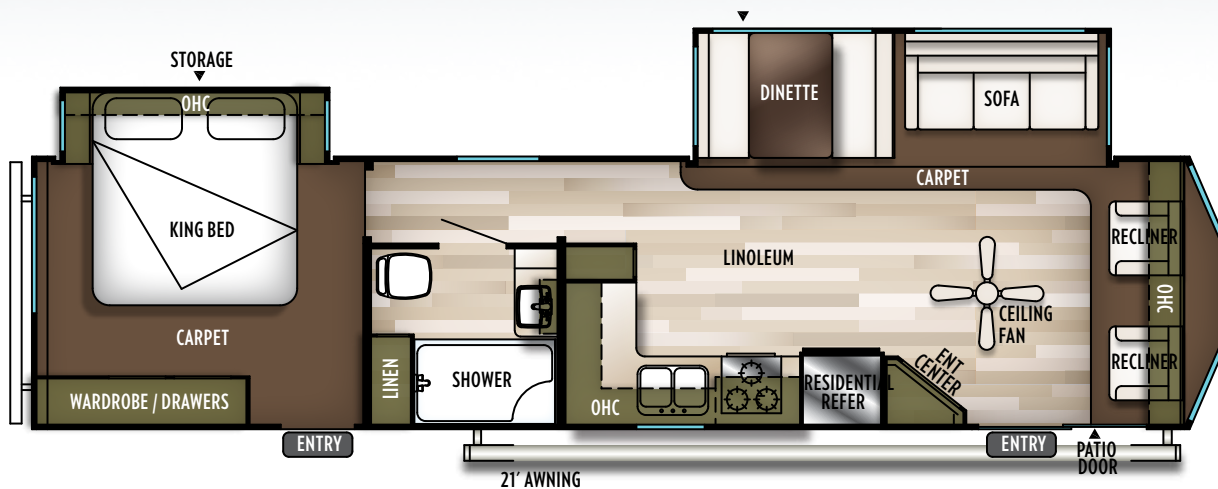


**353FLFB**  
CLAY INTERIOR



**WHISPER-QUIET  
COMFORT A/C**  
DLX / LODGE

**OBNOXIOUS  
NOISY A/C**  
COMPETITION



**COZY & WARM**  
DLX / LODGE

\* FRONT COVER SHOWN WITH OPTIONAL FIBERGLASS EXTERIOR.

WHO KNOWS?

COMPETITION

ALWAYS ON  
USB PORTS

DLX / LODGE

PANORAMIC  
BEAUTY

DLX / LODGE

WHO KNOWS?

COMPETITION

WHO KNOWS?

COMPETITION

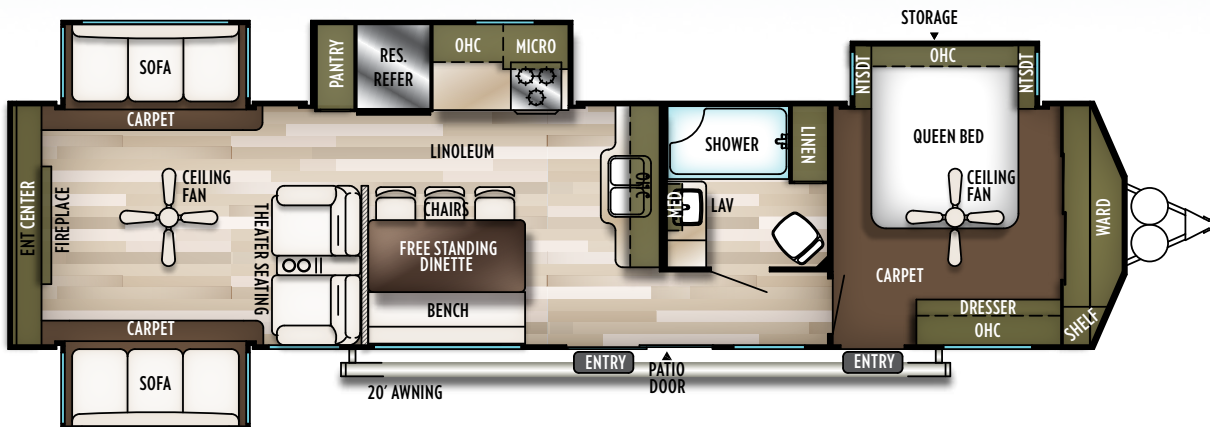
WHEN YOU  
**COMPARE**  
THE DIFFERENCE IS CLEAR.

**395RET**  
CLAY INTERIOR



**RESIDENTIAL  
APPLIANCES**  
WILDWOOD

**WHO KNOWS  
COMPETITION**



**PERFECT SLEEP**

**WILDWOOD**

WHO KNOWS?

COMPETITION

ACCENT  
LIGHTS

WILDWOOD

SLIDE-OUT  
LIGHTING

WILDWOOD

WHO KNOWS?

COMPETITION

WHO KNOWS?

COMPETITION

WHEN YOU  
**COMPARE**  
THE DIFFERENCE IS CLEAR.

42DL

CLAY INTERIOR



**SOLID SURFACE  
COUNTERS**  
WILDWOOD

**OBNOXIOUS  
NOISY A/C**  
COMPETITION



**SOFT & COMF**  
WILDWOOD



WHO KNOWS?

COMPETITION

FULL-SIZE  
MICROWAVE

WILDWOOD

KEEPING IT  
CLEAN

WILDWOOD

WHO KNOWS?

COMPETITION

WHO KNOWS?

COMPETITION

WHEN YOU  
**COMPARE**  
THE DIFFERENCE IS CLEAR.



**TINTED RADIUS  
SAFETY GLASS WINDOWS**

DLX & LODGE



**SHAW®  
PLANK WOOD  
LINOLEUM**

DLX & LODGE



**WHIRLPOOL®  
1.6 CU. FT.  
MICROWAVE**

DLX & LODGE



**5/8" TONGUE  
& GROOVE  
PLYWOOD FLOORING**

DLX & LODGE



**PATIO DOOR**

DLX & LODGE



**HIGH RISE  
SPRING FAUCET**

DLX & LODGE



**PORCELAIN  
FLUSH TOILET**

DLX & LODGE

POPULAR FEATURES

**DLX**



**LIVING ROOM  
CEILING FAN**

DLX & LODGE



**RECESSED STOVE  
WITH GLASS COVER**

(OPTIONAL IN DLX MODELS ONLY)

DLX & LODGE



**THOMAS PAYNE®  
FURNITURE**

DLX & LODGE





8'

**8' CEILINGS**

LODGE

**FREE STANDING  
DINETTE**

LODGE

**EXTRA LARGE  
MICROWAVE**

LODGE

**ELECTRIC  
FIREPLACE**

(MOST LODGE MODELS)

LODGE

POPULAR UPGRADES

**LODGE**

**DOUBLE BASIN  
KITCHEN SINK**

LODGE

**20 GALLON  
ELECTRIC WATER  
HEATER**

DLX & LODGE

**FANTASTIC FAN**

LODGE

**SHAW®  
STAIN-RESISTANT  
CARPET**

LODGE

**3-BURNER RANGE  
WITH 20" X 20" OVEN**

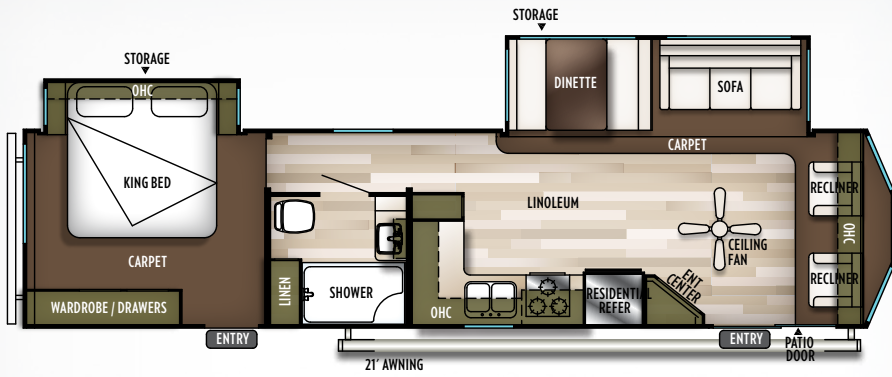
LODGE

# WILDWOOD DLX, LODGE & GRAND LODGE CONSTRUCTION

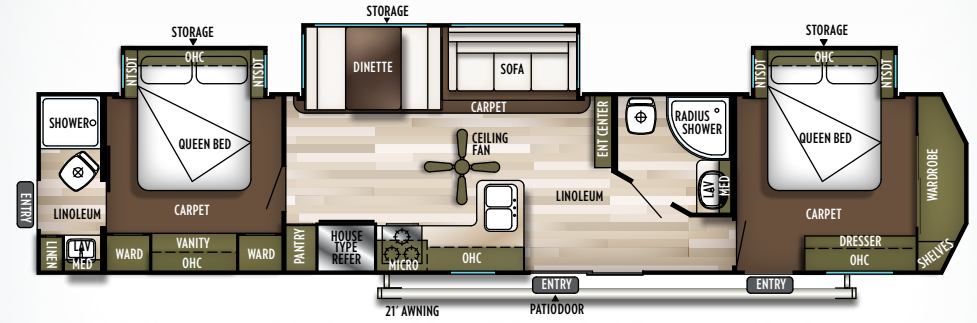
- 1 Radiused triple entry steps
- 2 102" exterior width for increased living space (96" on DLX Models)
- 3 Tinted safety glass windows
- 4 Standard patio door (3 window door on some models)
- 5 12" powder coated I-beam (Most models)
- 6 5/8" tongue and groove plywood flooring
- 7 Shaw® stain resistant Carpet with padding
- 8 Radiused fender skirt
- 9 2" wall studs 16" on center
- 10 15K BTU A/C (13.5K on DLX, 2 15K BTU AC units Std. on Grand Lodge)
- 11 Seamless one-piece roof (18 yr. manufacturer defect warranty)
- 12 3/8" roof decking (Full walk-on roof)
- 13 R-7 fiberglass insulation throughout
- 14 Dual 30 lb. bottle cover w/ easy access
- 15 5" truss roof rafters 16" on center
- 16 Aluminum siding (Fiberglass opt.)
- 17 84" interior height DLX (96" interior height Lodge)



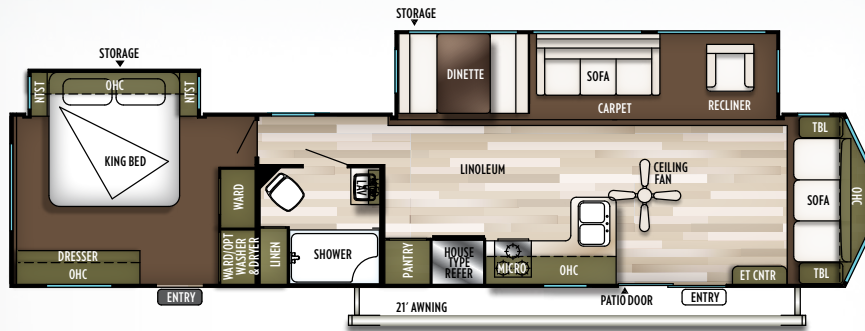




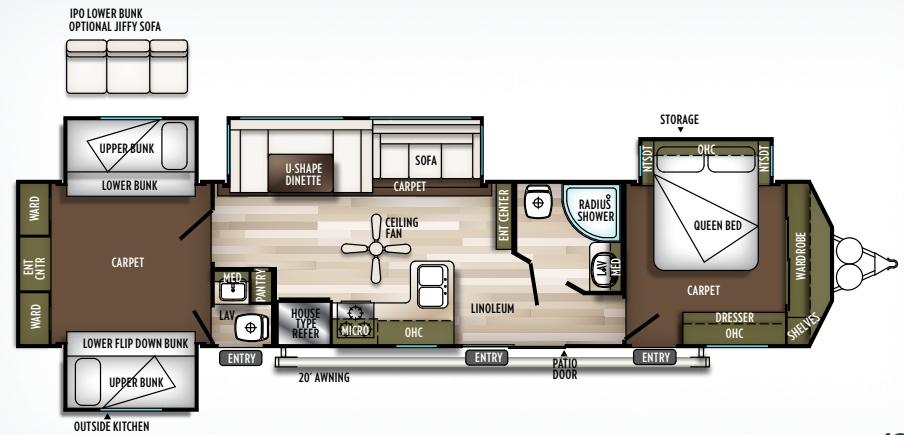
353FLFB



4002Q



40FDEN



42QBQ

# WILDWOOD FLOORPLAN KEY

*Pillows and blankets shown on beds and bunks are for demonstration purposes only and do not come with your new coach.*

- OHC** OVERHEAD CABINET
- WARD** WARDROBE
- MICRO** MICROWAVE
- LAV** BATHROOM SINK

	353FLFB	40FDEN	42QBQ	4002Q
HITCH WEIGHT (LBS.)	1290	1295	1325	1260
AXLE WEIGHT (LBS.)	7330	8425	10375	8980
UNLOADED VEHICLE WEIGHT (LBS.)	8620	9720	11700	10240
CARGO CARRYING CAPACITY (LBS.)	2811	1716	1566	1161
EXTERIOR LENGTH (LBS.)	38' 3"	42' 6"	42' 10"	43' 7"
EXTERIOR HEIGHT (LBS.)	11' 3"	11' 2"	11' 2"	11' 4"
FRESH WATER (GAL.)	39	39	40	39
BLACK WATER (GAL.)	40	40	80	80
GREY WATER (GAL.)	50	80	80	90
TIRE SIZE (IN.)	15	15	15	15

# STANDARDS & OPTIONS

## COMFORT & CONVENIENCE

- 84" interior height with 8' peak on the cathedral ceilings
- Black framed tinted safety glass windows
- Modern privacy shades w/ autostop (Living room, bed)
- Triple sealed slide outs
- Water heater by-pass
- 6-gallon quick recovery DSI gas/electric water heater
- Ducted Coleman® 13,500 BTU central air conditioner w/ quick cool feature
- In-floor ducted heat w/ 35K BTU furnace
- Stain resistant carpet with padding
- Flush-floor hydraulic slide rooms with manual override (Most models)
- Systems monitor panel
- 6' 2" Tall slide rooms
- Solid wood drawer fronts with ball bearing drawer guides
- Shaw® vinyl flooring

## KITCHEN

- Extra large overhead cabinets w/hidden hinges
- Mortise and tenon shaker style hardwood cabinet doors
- 16 cu. ft. residential refrigerator
- 12-volt power range hood w/ light
- Whirlpool® 1.6 cu. ft. oversized microwave
- One piece, water resistant, designer backsplash
- Stainless double basin residential style undermount kitchen sink
- High definition countertops
- 3 burner Furrion® range and oven w/ glass cover

- High rise spring faucet at kitchen sink
- Kitchen waste basket (Some models)
- Pantry with shelves

## LIVING ROOM

- NEW Bluetooth sound bar w/ TV hook-up
- Thomas Payne® recliners (Per floorplan)
- Thomas Payne® tri-fold sofa (Per floorplan)
- Cathedral ceiling w/ ceiling fan (8' peak)
- Digital TV antenna w/ booster
- Cable and satellite ready
- Extra large picture window at dinette
- Extra large dinette for more comfortable dining and sleeping
- Decorative lights in slide-out

## BEDROOM

- Modern roller shade window treatment (Limited time option package)
- "Teddy bear" bunk mattresses (Per floorplan)
- Denver 9" pillowtop mattress
- LED reading lights over master bed
- Designer residential bedspread with five pillows
- Lift up beds w/ gas struts (Most models)
- Cable TV hook-up
- Stain resistant carpet w/ padding
- Solid privacy doors

## BATHROOM

- Giant mirror w/ vanity light
- Ceiling light w/ convenient wall switch
- ABS tub or shower w/ one-piece surround

## EXTERIOR:

- New 2 exterior speakers w/ Blue LED Lights
- Patio awning
- Patio door w/ screen
- Radiused entry door
- 15" radial tires (16" with optional fiberglass exterior)
- Entry assist handle
- 2 - 30 lb. LP tanks w/ automatic change over & EZ access LP cover
- City water fill

## CONSTRUCTION

- 12" forged I-beam frame (Per model)
- Cambered chassis
- 2" x 3" floor joists 12" on center
- 5/8" 5-ply tongue and groove plywood floor decking
- 2" wall studs maximum 16" on center
- 5" bowed truss roof rafters
- 3/8" walk-on roof decking
- R-7 insulation
- Seamless one piece roof w/ 18 year manufacturer defect warranty

## SECURITY & SAFETY

- Smoke detector
- Fire extinguisher
- Carbon monoxide detector
- LP gas leak detector
- Porch light w/ interior switch
- GFI receptacles and covered patio outlet
- Heavy duty safety chains
- Built to code ANSI 119.2

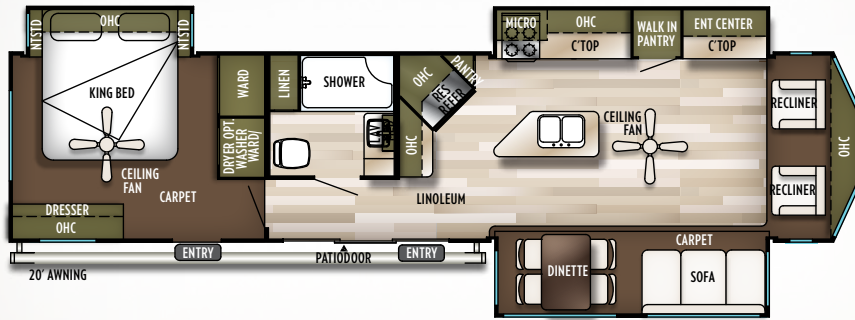
- Certified to meet all national highway traffic safety administration specs

## POPULAR OPTIONS:

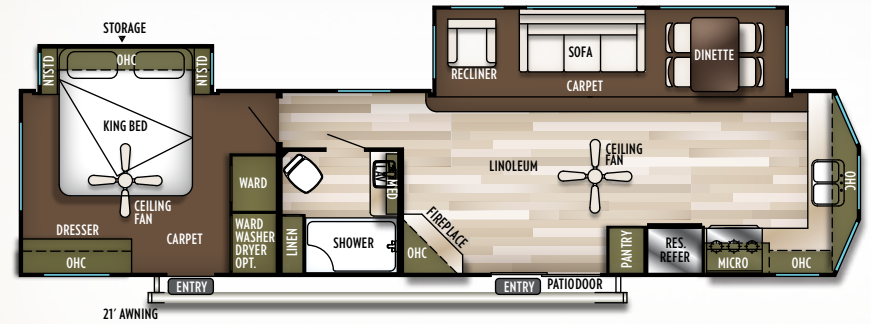
- Beige gel coat fiberglass exterior
- 10-gallon gas/electric DSI water heater
- Skylight over tub
- Outside kitchen (42QBB only)
- Free standing dinette w/ 4 chairs
- Outside shower
- Detachable hitch
- Power awning

## LIMITED TIME PROGRAM OPTIONS:

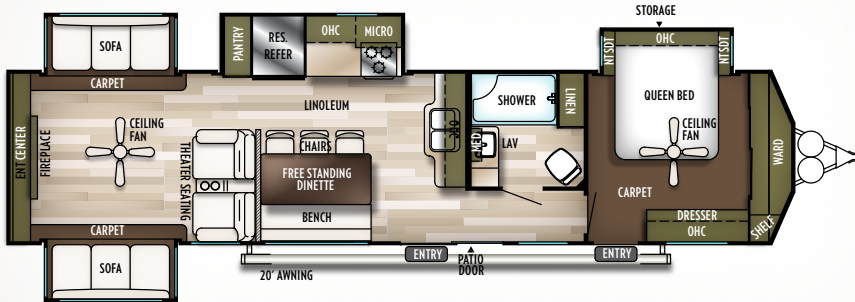
- Exterior LED Light Strip Under Awning
- LED Interior Mushroom Style Bright Lights
- Central Vacuum
- Solid Surface Kitchen Counter Tops
- Modern Cloth Roller Shades w/AutoStop (Living, Bed)
- New Furrion Recessed Stove with Glass Stove Cover
- Stainless Steel Kitchen Appliances
- 1.6 Cu. Ft. Oversized Whirlpool Microwave
- Stainless Steel Dual Basin Undermount Sink
- LED Accent Light Pkg: Under-Cabs and Over LR Slide outs
- Stainless Steel Roll Up Sink Cover
- 30" Built in Electrical Fireplace w/ Crystals



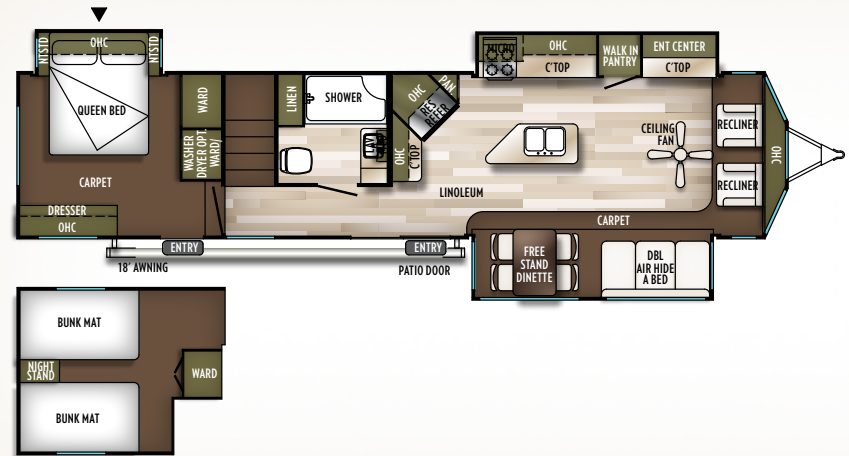
393FLT



394FKDS



395RET



4092BFL

GRAND LODGE



42DL

SEE DEALER FOR STANDARDS & OPTIONS LIST

	393FLT	394FKDS	395RET	4092BFL	42DL
HITCH WEIGHT (LBS.)	1535	1555	1468	1605	1855
AXLE WEIGHT (LBS.)	9435	8520	9830	10248	10805
UNLOADED VEHICLE WEIGHT (LBS.)	10970	10075	11298	11853	12660
CARGO CARRYING CAPACITY (LBS.)	2506	1621	2111	1693	1136
EXTERIOR LENGTH (LBS.)	40' 5"	40' 8"	40' 10"	41' 8"	41' 8"
EXTERIOR HEIGHT (LBS.)	11' 5"	11' 2"	11' 3"	11' 2"	11' 2"
FRESH WATER (GAL.)	39	39	39	39	40
BLACK WATER (GAL.)	40	40	40	40	40
GREY WATER (GAL.)	80	90	80	80	80
TIRE SIZE (IN.)	15	15	15	15	15

# STANDARDS & OPTIONS

## COMFORT AND CONVENIENCE

- 8 Foot tall ceiling heights
- 7 Foot tall slide out heights
- Deluxe window package with tinted glass windows
- Shaw® plank wood linoleum
- 102" Exterior width for increased living space
- Wider hallways, and bathrooms
- Water heater by-pass
- Wired and braced for second A/C (2nd A/C standard on 4092BFL and 42DL)
- Ducted Coleman® 15,000 BTU central air conditioner w/ quick cool feature
- Modern privacy shades w/ autostop in living room, bed (Limited program option)
- 20-Gallon electric water heater
- In-floor ducted heat w/ 35K BTU furnace
- Flush-floor hydraulic slide rooms w/ manual override (Most models)
- Systems monitor panel
- Shaw® stain resistant carpet with padding
- 50 Amp electrical service and
- 65 Amp 12 volt converter
- Solid hardwood drawer fronts, and cabinet doors

## KITCHEN

- Whirlpool 1.6 cu. ft. oversized microwave
- One piece designer backsplash
- 2 outlets in every kitchen
- Skylight in every kitchen
- Brushed nickel hardware
- Free standing dinette with 4 chairs
- Extra large, shaker style, hard wood overhead cabinets
- Full extension ball bearing drawer guides

- Residential style, built-in oven and cooktop
- 16 Cu. Ft. Residential electric refrigerator
- Pantry with shelves
- High-definition countertops
- Dual basin stainless steel sink

## LIVING ROOM

- NEW Bluetooth sound bar w/ remote and TV hook-up
- Thomas Payne® collection tri-fold sofa
- Thomas Payne® collection rocker recliners (Per floorplan)
- Digital TV antenna w/ booster
- Cable and satellite hookup
- Glass sliding patio door
- Ceiling fan with wall switch

## BEDROOM

- NEW - 2.4 amp dual USB ports at master bed
- Upgraded "teddy bear" bunk mattresses (Per model)
- Shoe nook at foot of master bed
- Outlets at back-side of master bed
- Denver 9" pillowtop mattress
- Bedspread and decorative pillows
- Ceiling fan (N/A 4092BFL and 42DL)
- Comfort flex bed frame and base with storage (Most models)
- Under bed storage (Most models)
- Solid privacy doors

## BATHROOM

- 50" Walk-in shower with seat (Most models)

- Giant mirror w/ vanity light
- Full extension ball bearing drawer guides
- Porcelain foot flush toilet(s)
- 12" 10-Blade fantastic bath fan™

## EXTERIOR

- NEW 2 Exterior Speakers w/ Blue LED
- Black exterior moldings
- (2) 110V lights on front (Some models)
- Cold crack and mildew resistant awning
- 15" Radial tires (Per floorplan)
- 30 Lb. Double LP tanks w/ automatic change over
- EZ access LP tank cover
- City water fill w/ brass valve
- Swing out entry assist handle

## CONSTRUCTION

- 12" Forged I-beam frame
- Cambered chassis
- Seamless holding tanks
- Color coded water lines
- 2" X 3" floor joists 12" on center
- 5/8" 5-Ply tongue and groove plywood floor decking
- 2" Wall studs maximum 16" on center
- 5" Bowed truss roof rafters
- 3/8" Walk-on roof decking
- One-piece, seamless roof w/ 18 year warranty
- Triple sealed slide outs
- R-7 insulation throughout (Floors, walls, ceilings, and slide-outs)

## SECURITY AND SAFETY

- Smoke detector
- Fire extinguisher
- Carbon monoxide detector
- LP gas leak detector
- Door latch w/ integrated dead bolt lock
- GFI receptacles and covered patio outlet
- Heavy duty safety chains
- Lockable fiberglass radius baggage doors
- Built to code: ANSI 119.2
- Certified to meet all national highway traffic safety administration specifications

## POPULAR OPTIONS

- Power awning
- Trifold Sofa in Bunk Room IPO Bunk
- Detachable tongue hitch (NA 42DL)
- Outside shower
- Skylight over tub (NA 42DL)
- Beige gel coat fiberglass exterior

## LIMITED TIME PROGRAM OPTIONS

- Exterior LED Light Strip Under Awning
- LED Interior Mushroom Style Bright Lights
- Central Vacuum
- Solid Surface Kitchen & Bathroom Counter Tops
- Modern Cloth Roller Shades w/ AutoStop (Living, Bed)
- Stainless Steel Kitchen Appliances
- 1.6 CuFt Oversized Whirlpool Microwave
- Stainless Steel Dual Basin Undermount Sink
- LED Accent Light Pkg: Under-Cabs and Over LR Slides
- Stainless Steel Roll Up Sink Cover



### 24/7 EMERGENCY ROADSIDE ASSISTANCE WITH VEHICLE PURCHASE\*

- |                |                 |
|----------------|-----------------|
| TOWING         | WINCH-OUT       |
| JUMP-STARTS    | MOBILE MECHANIC |
| TIRE CHANGES   | TECHNICAL       |
| FLUID DELIVERY | SUPPORT         |
| LOCKOUT        | DEALER LOCATOR  |
| SERVICE        | SERVICES        |



\*VALID FOR 1 YEAR FROM DATE OF PURCHASE

## FREE MEMBERSHIP to Forest River Owners' Group

[www.forestriverfrog.com](http://www.forestriverfrog.com)



**Learn More**  
Scan this barcode using  
a QR Reader on your  
smart phone to learn  
more about Forest River.



A Berkshire Hathaway company.

FOREST RIVER, INC. 55470 C.R. 1 ELKHART, IN 46515 | (574) 533-5934  
[WWW.FORESTRIVERINC.COM/WILDWOOD](http://WWW.FORESTRIVERINC.COM/WILDWOOD) | [WWW.FORESTRIVERACCESSORIES.COM](http://WWW.FORESTRIVERACCESSORIES.COM)



#### PRE-DELIVERY INSPECTION FACILITY

20,000 square feet of quality assurance. The bare essentials for a premium product. This state-of-the-art facility gives immediate daily feedback to production for quality assurance in every unit built.

#### Specification Definitions

**GVWR (Gross Vehicle Weight Rating)** - is the maximum permissible weight of the unit when fully loaded. It includes all weights, inclusive of all fluids, cargo, optional equipment and accessories. For safety and product performance do NOT exceed the GVWR.

**GAWR (Gross Axle Weight Rating)** - is the maximum permissible weight, including cargo, fluids, optional equipment and accessories that can be safely supported by a combination of all axles.

**UVW (Unloaded Vehicle Weight)\*** - is the typical weight of the unit as manufactured at the factory. It includes all weight at the unit's axle(s) and tongue or pin and LP Gas. The UVW does not include cargo, fresh potable water, additional optional equipment or dealer installed accessories.

\*Estimated average based on standard build optional equipment.

**CCC (Cargo Carrying Capacity)\*\*** - is the amount of weight available for fresh potable water, cargo, additional optional equipment and accessories. CCC is equal to GVWR minus UVW. Available CCC should accommodate fresh potable water (8.3 lbs per gallon). Before filling the fresh water tank, empty the black and gray tanks to provide for more cargo capacity.

\*\* Estimated average based on standard build optional equipment

Each Forest River RV is weighed at the manufacturing facility prior to shipping. A label identifying the unloaded vehicle weight of the actual unit and the cargo carrying capacity is applied to every Forest River RV prior to leaving our facilities.

The load capacity of your unit is designated by weight, not by volume, so you cannot necessarily use all available spare when loading your unit.

All information contained in this brochure is believed to be accurate at the time of publication. However, during the model year, it may be necessary to make revisions and Forest River, Inc., reserves the right to make all such changes without notice, including prices, colors, materials, equipment and specifications as well as the addition of new models and the discontinuance of models shown in this brochure. Therefore, please consult with your Forest River dealer and confirm the existence of any materials, design or specifications that are material to your purchase decision. Litho. U.S.A. FOR 1538 P/W: 2019.03.08

YOUR WILDWOOD DEALER 2019



[www.ForestRiverBuyLocal.com](http://www.ForestRiverBuyLocal.com)



X-LITE



WILDWOOD



HERITAGE GLEN



DLX | LODGE | GRAND LODGE