

Wildwood

NORTHWEST EDITION

Wildwood
X-lite

WILDWOOD / X-LITE:
NORTHWEST EDITION





241BHXL



SHOWN IN:
MINK

SOME FEATURES HAVE
LIMITED AVAILABILITY



GLASS COOKTOP COVER



UNDERMOUNT SINK WITH FAUCET



Spacious for all.

263BHXL



SHOWN IN:
**TIFFANY
LEATHER**

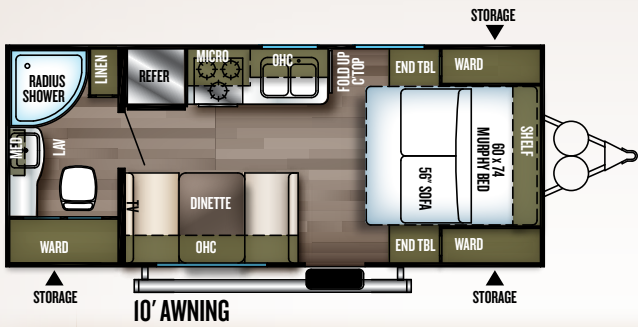
SHOWN WITH STANDARD
BEAUFLO[®] PLANK WOOD
LINOLEUM, CUSTOMER
SUPPLIED TV. SOME
FEATURES HAVE LIMITED
AVAILABILITY



LIVING AREA



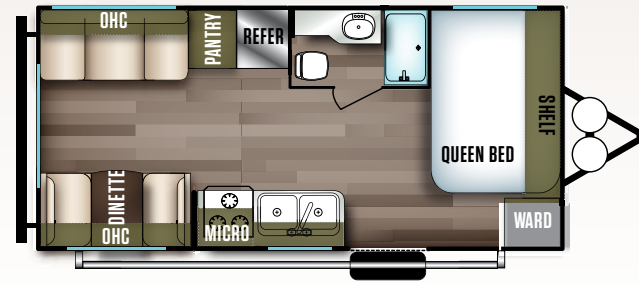
BEDROOM



171RBXL

DRY WEIGHT:
4092

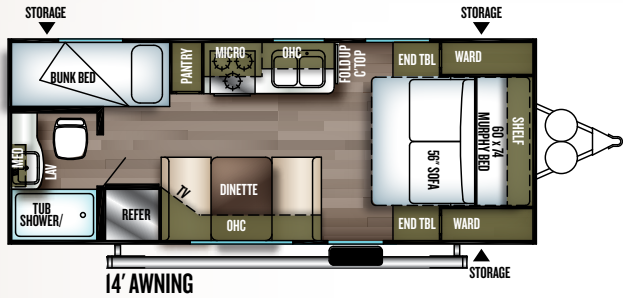
EXT. LENGTH:
23'



191RDXL

DRY WEIGHT:
4249

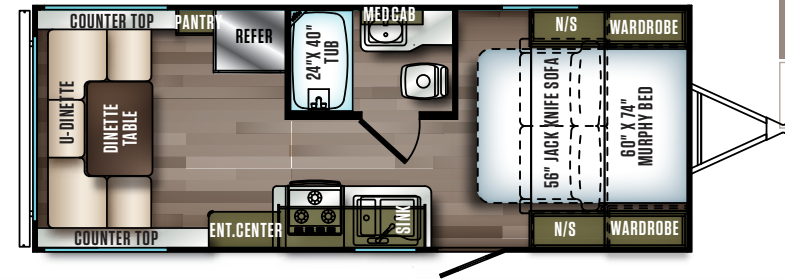
EXT. LENGTH:
23' 4"



201BHXL

DRY WEIGHT:
4314

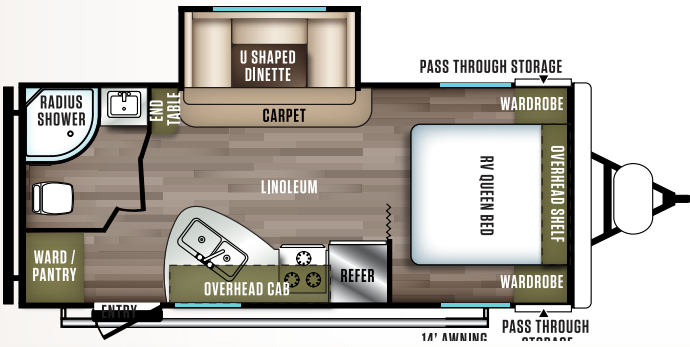
EXT. LENGTH:
24' 2"



207RUXL

DRY WEIGHT:
4423

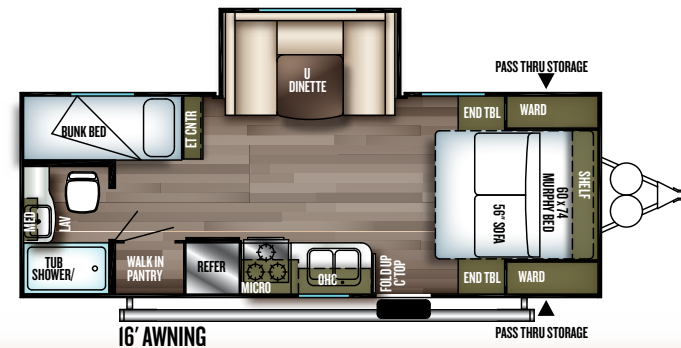
EXT. LENGTH:
25'



210RBXL

DRY WEIGHT:
4830

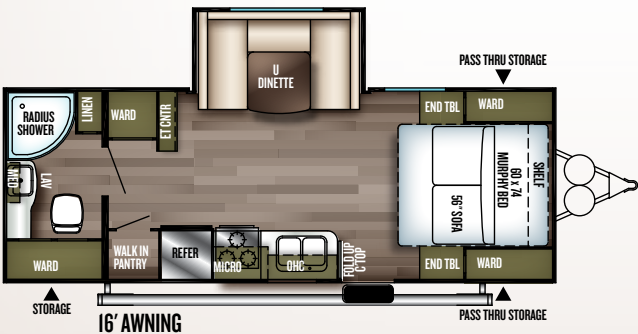
EXT. LENGTH:
25' 2"



230BHXL

DRY WEIGHT:
4985

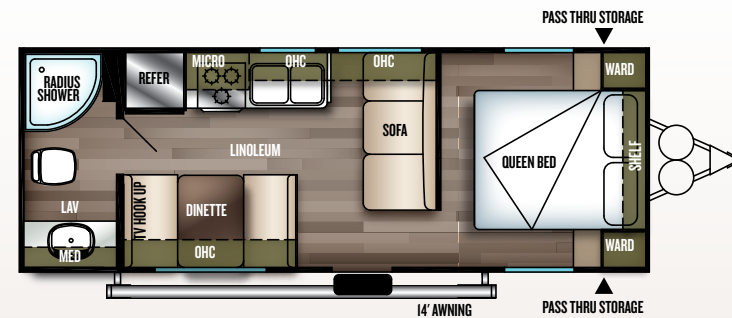
EXT. LENGTH:
26' 3"



233RBXL

DRY WEIGHT:
5278

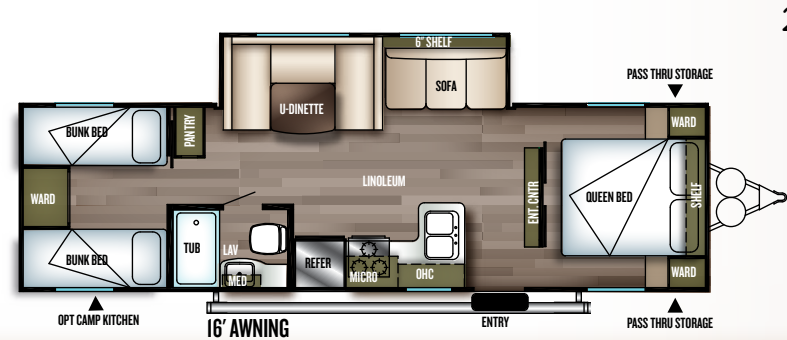
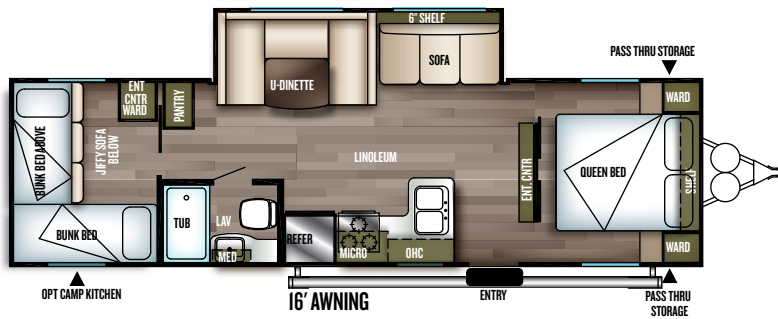
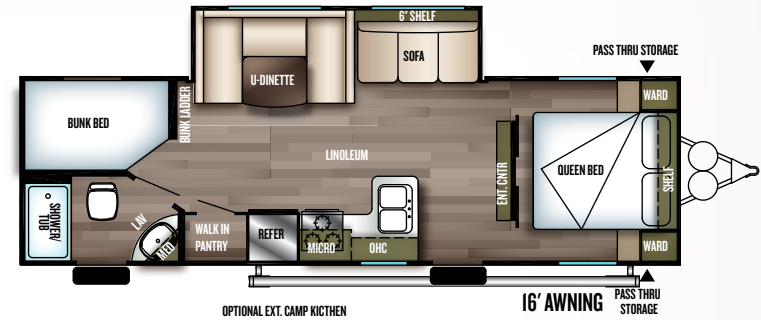
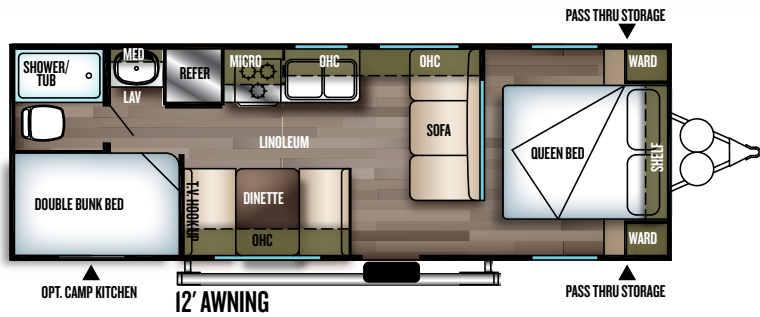
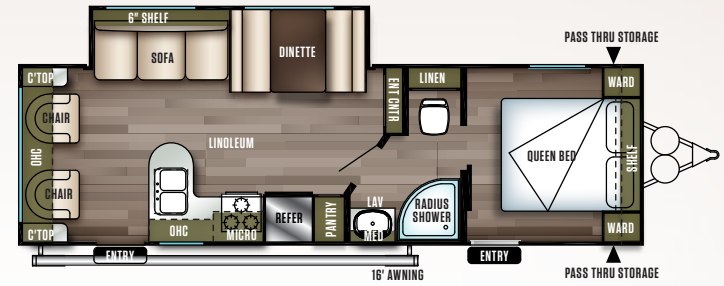
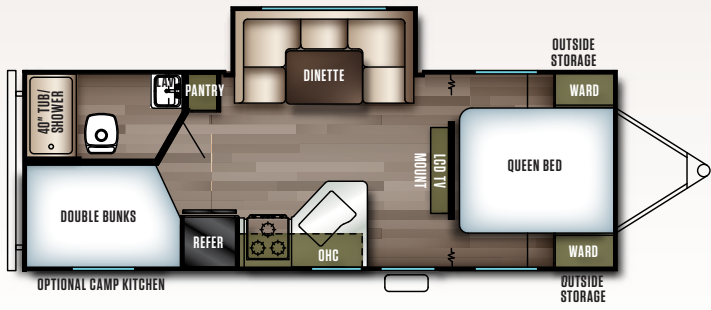
EXT. LENGTH:
26' 3"



241QBXL

DRY WEIGHT:
4624

EXT. LENGTH:
26' 10"



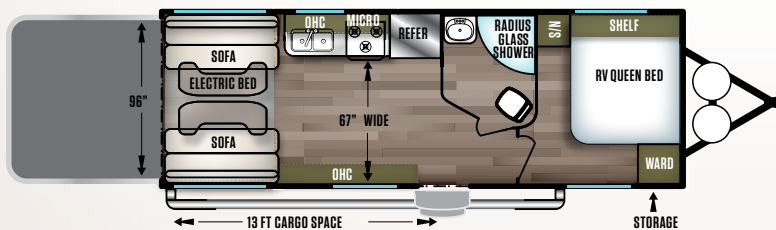
	171RBXL	191RDXL	201BHXL	207RUXL	210RBXL	230BHXL	233RBXL	241QBXL	243BHXL	254RLXL	261BHXL	263BHXL	273QHXL	282QBXL
GVWR	7,522	7,465	7,544	7,489	7,500	7,655	7,596	7,470	7,566	7,630	7,500	7,635	7,702	7,688
HITCH WEIGHT (LBS.)	522	465	544	489	500	655	596	470	566	630	635	702	688	688
UVW (LBS.)	4,092	4,249	4,314	4,423	4,830	4,985	5,278	4,624	5,492	5,793	4,448	5,866	6,162	6,458
CCC (LBS.)	3,430	3,216	3,230	3,066	2,670	2,670	2,318	2,846	2,074	1,837	3,052	1,769	1,540	1,230
EXTERIOR LENGTH	23' 0"	23' 4"	24' 2"	25' 0"	25' 2"	26' 3"	26' 3"	26' 10"	28' 2"	30' 8"	28' 7"	31' 11"	33' 8"	33' 4"
EXTERIOR HEIGHT	10' 1"	10' 3"	10' 1"	10' 1"	10' 3"	10' 3"	10' 3"	10' 1"	10' 1"	10' 3"	10' 1"	10' 3"	10' 3"	10' 3"
EXTERIOR WIDTH	96"	96"	96"	96"	96"	96"	96"	96"	96"	96"	96"	96"	96"	96"
FRESH WATER (GAL.)	42	29	42	46	61	42	42	29	46	61	29	61	61	61
GRAY WATER (GAL.)	32	42	32	42	28	32	32	28	74	32	28	74	32	32
BLACK WATER (GAL.)	32	42	32	42	32	32	32	32	32	42	42	32	42	42
AWNING SIZE (FT)	10	15	14	10	14	16	14	16	12	16	16	16	16	16

211SSXL

SHOWN IN: TIFFANY LEATHER

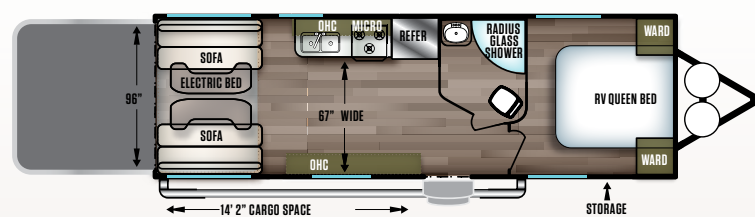
SHOWN WITH STANDARD
BEAUFLO®R PLANK WOOD
LINOLEUM AND OPTIONAL
SWIVEL CHAIRS IN PLACE
OF STANDARD SOFA

	211SSXL	251SSXL
GVWR	8,540	8,546
HITCH WEIGHT (LBS.)	740	746
UVW (LBS.)	5,262	5,664
CCC (LBS.)	3,278	2,882
EXTERIOR LENGTH	27' 5"	29' 5"
EXTERIOR HEIGHT	11' 8"	11' 8"
EXTERIOR WIDTH	96"	96"
FRESH WATER (GAL.)	61	61
GRAY WATER (GAL.)	26	26
BLACK WATER (GAL.)	32	32
AWNING SIZE (FT)	18	18



211SSXL

DRY WEIGHT:
5262
EXT. LENGTH:
27' 5"



251SSXL

DRY WEIGHT:
5664
EXT. LENGTH:
29' 5"



UNDERMOUNT SINK W/ FAUCET



OUTSIDE STEPS



GLASS COOKTOP COVER

WILDWOOD XLITE

Standards & Options

STANDARD FEATURES

- Upgraded kitchen faucet
- 6-way adjustable hidden hinges
- Modern roller shades
- Large entertainment center, allows for larger TV (Some models)
- Aerodynamic front profile
- Mortise and tenon shaker style cabinet doors
- 3 Burner cooktop
- 13.5K A/C (Non-ducted)
- Diamond plate rock guard
- SolidStep entry steps
- Digital TV antenna w/ booster
- Cable / satellite ready
- Bluetooth stereo
- "Teddy bear bunk mattress
- Shoe nook at the end of the main bed (Per floorplan)
- Large tables at U-dinette
- 2 Exterior speakers
- 2 - 20 lb. LP bottles w/ hard cover
- Extra large kitchen overhead cabinets
- Stainless steel look appliances
- Water heater by-pass
- Ball bearing drawer guides
- 6 Gal. Gas DSI water heater
- Radius shower enclosure (Per floorplan)
- Pass thru storage
- One piece kitchen backsplash
- High definition countertops
- Brushed nickel cabinet hardware
- Beauflor® linoleum flooring

- Black tank flush
- Outside shower
- Skylight over tub
- Radial tires with full spare and carrier
- Double door refrigerator
- Glass cooktop cover w/oven
- Undermount sink w/sink cover
- Flip-up countertop extension (Per floorplan)
- LP quick disconnect
- Power awning
- Power tongue jack
- Push button remote w/holster
- External LED strip lighting
- Solar prep and LED lights

POPULAR OPTIONS

- Fiberglass siding
- Backpack flip down rack
- Chrome wheels
- Tub surround (Per floorplan)
- Ducted A/C
- Enclosed holding tanks (Some models)
- 12 Volt heat strips
- Exterior camp kitchen (Some models)
- 2nd Bunk Window
- Power Stab Jacks



Luxurious and affordable.

27REI



ENTERTAINMENT
CENTER SHOWN WITH
CUSTOMER-SUPPLIED TV



SHOWN IN:
**TIFFANY
LEATHER**

LIVING AREA



BATHROOM

SHOWN IN:
**TIFFANY
LEATHER**

SHOWN WITH STANDARD
BEAUFLO[®] PLANK WOOD
LINOLEUM, CUSTOMER-
SUPPLIED TV





Interior Features

SOME FEATURES SHOWN HAVE LIMITED AVAILABILITY.

1. Undermount sink
2. 3 Burner / Glass cooktop cover
3. Extra deep kitchen cabinets
4. Premium faucet
5. Solid surface countertop
6. Stainless steel look appliances
7. Modern roller shades
8. Additional storage



WILDWOOD
Construction

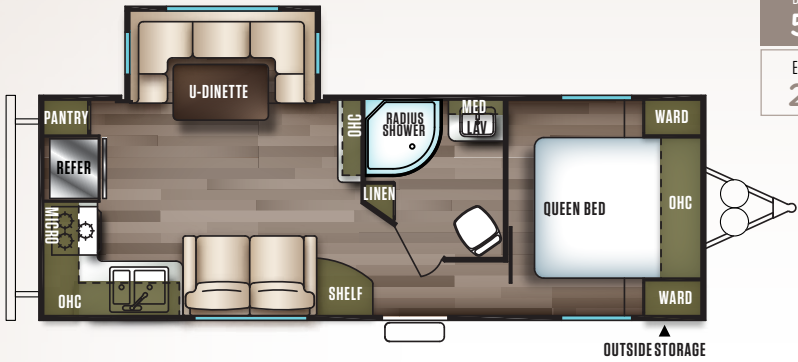
- 1 2" x 3" floor joists 12" on center
- 2 5/8" flooring
- 3 2" wall studs 16" or less on center
- 4 30" fiberglass radius entry door
- 5 Aluminum siding
- 6 5" bowed truss roof rafters
- 7 One piece seamless roof (12 yr. manufacturer defect warranty)
- 8 R-7 fiberglass insulation throughout

- 9 Pass-thru storage
- 10 Smooth rolled skirting
- 11 In floor ducted heat
- 12 Diamond plate rockguard
- 13 3/8" roof decking (full walk-on roof)
- 14 LP bottle cover w/ easy access
- 15 13.5K ducted roof, high output AC w/ quick cool

- 16 Stain resistant carpet
- 17 One piece linoleum flooring
- 18 Safety glass windows
- 19 Polystyrene foam insulated A/C duct work
- 20 "Darco" anti-puncture underbelly wrap

At Wildwood your satisfaction is serious business and it shows. Our commitment to your satisfaction includes:

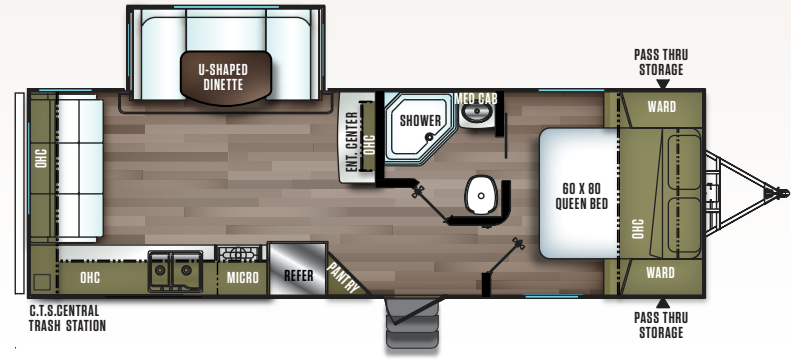
- A. Fiberglass option
- B. Flip down rack option
- C. 6 gallon Gas/Electric DSI water heater with Quick Recovery
- D. New Centralized Command Center



25RKS

DRY WEIGHT:
5794

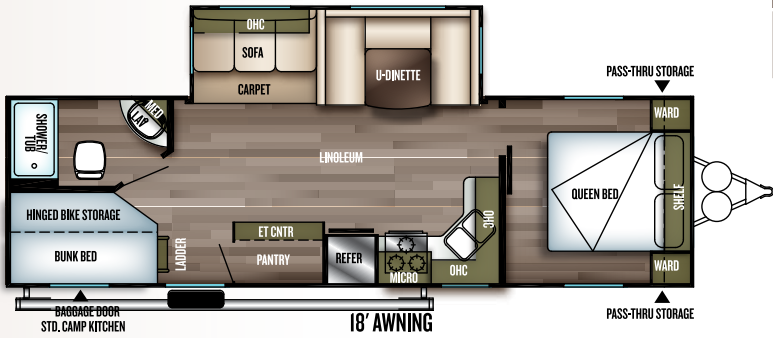
EXT. LENGTH:
29' 1"



25RLS

DRY WEIGHT:
5987

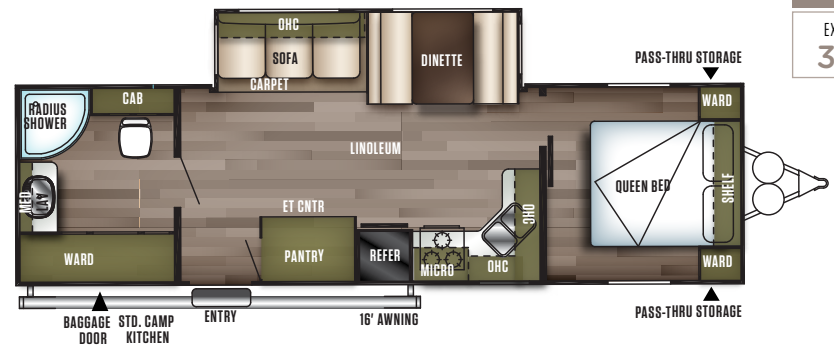
EXT. LENGTH:
30' 9"



27DBK

DRY WEIGHT:
6898

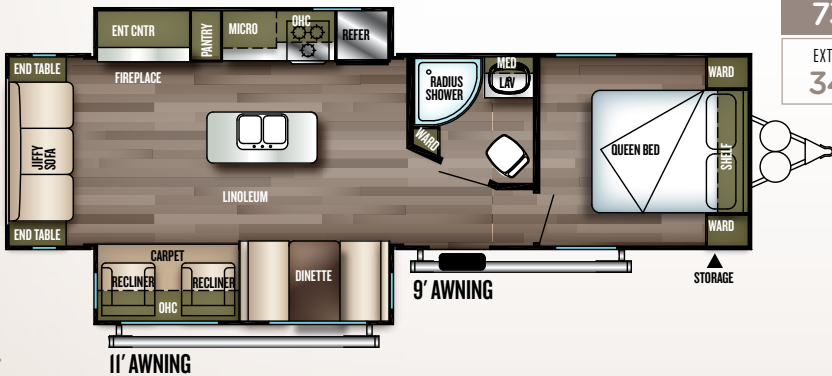
EXT. LENGTH:
32' 4"



27RBK

DRY WEIGHT:
7346

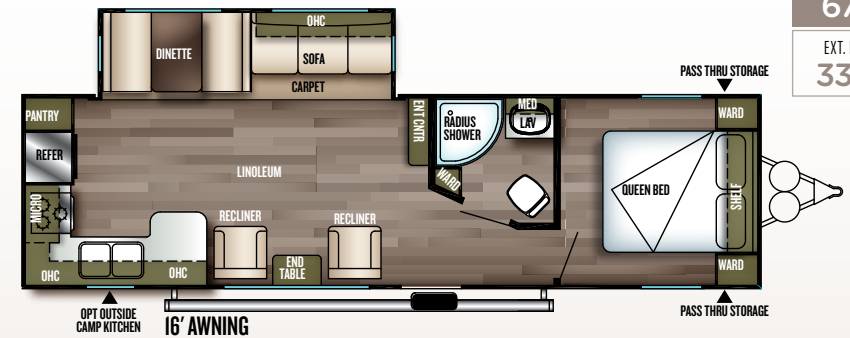
EXT. LENGTH:
32' 7"



27REIS

DRY WEIGHT:
7365

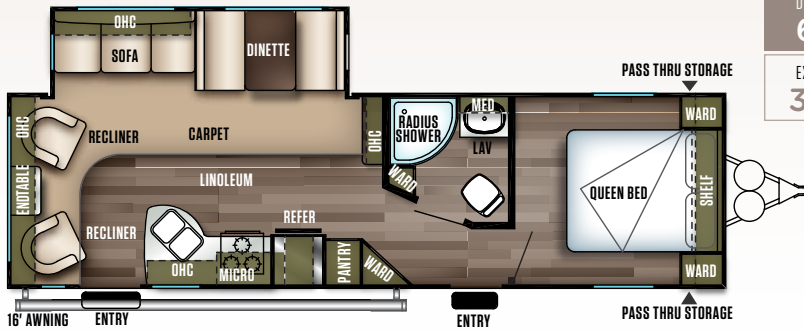
EXT. LENGTH:
34' 1"



27RKSS

DRY WEIGHT:
6798

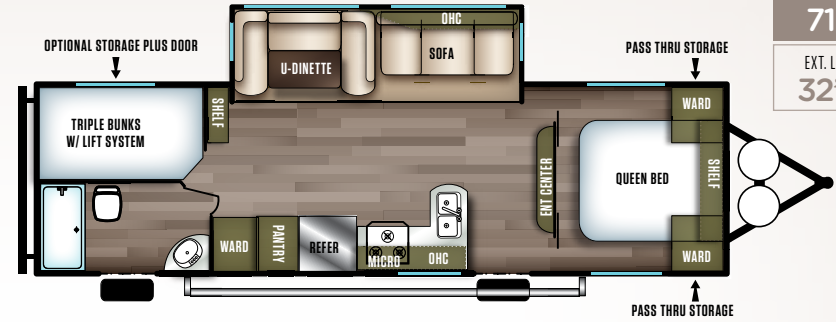
EXT. LENGTH:
33' 6"



27RLSS

DRY WEIGHT:
6418

EXT. LENGTH:
32' 3"



27TDSS

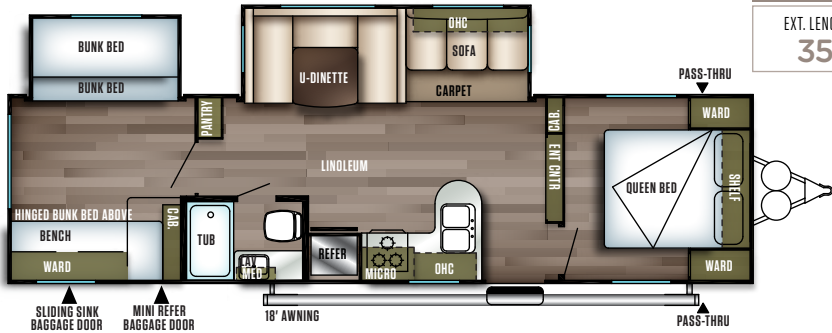
DRY WEIGHT:
7162

EXT. LENGTH:
32' 8"

28CKDS

DRY WEIGHT:
8000

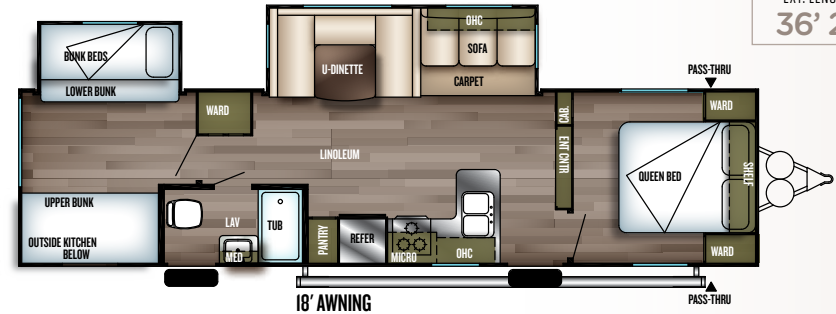
EXT. LENGTH:
35'



32BHDS

DRY WEIGHT:
8283

EXT. LENGTH:
36' 2"



	25RKS	25RLS	27DBK	27RBK	27REIS	27RKSS	27RLSS	27TDSS	28CKDS	32BHDS
GVWR	7,578	7,597	9,488	9,538	9,535	9,660	9,497	9,610	9,676	11,070
HITCH WEIGHT (LBS.)	578	597	688	738	735	860	697	810	876	910
UVW (LBS.)	5,794	5,987	6,898	7,346	7,365	6,798	6,418	7,162	8,000	8,283
CCC (LBS.)	1,784	1,610	2,590	2,192	2,170	2,862	3,079	2,448	1,676	2,787
EXTERIOR LENGTH	29' 1"	30' 9"	32' 4"	32' 7"	34' 1"	33' 6"	32' 3"	32' 8"	35'	36' 2"
EXTERIOR HEIGHT	11' 3"	11'	11'	11' 5"	11' 5"	11' 3"	11' 3"	11' 3"	11' 5"	11' 5"
EXTERIOR WIDTH	96"	96"	96"	96"	96"	96"	96"	96"	96"	96"
FRESH WATER (GAL.)	61	61	61	61	61	61	61	61	61	61
GRAY WATER (GAL.)	66	66	64	42	33	66	66	74	32	32
BLACK WATER (GAL.)	42	42	28	33	42	42	42	32	42	32
AWNING SIZE (FT)	16	18	17	17	11 & 10	16	16	16	18	18

The Wildwood Product Lineup



WILDWOOD



X-LITE



HERITAGE GLEN



DLX | LODGE | GRAND LODGE

CUSTOMER SATISFACTION



www.ForestRiverBuyLocal.com

FREE MEMBERSHIP
to Forest River Owners' Group

www.forestriverfrog.com



Learn More
Scan this barcode using a QR Reader on your smart phone to learn more about Forest River.



A Berkshire Hathaway company.

FOREST RIVER, INC. 55470 C.R. 1 ELKHART, IN 46515 | (574) 533-5934
WWW.FORESTRIVERINC.COM/WILDWOOD | WWW.FORESTRIVERACCESSORIES.COM



PRE-DELIVERY INSPECTION FACILITY

20,000 square feet of quality assurance. The bare essentials for a premium product. This state-of-the-art facility gives immediate daily feedback to production for quality assurance in every unit built.

Specification Definitions

GVWR (Gross Vehicle Weight Rating) - is the maximum permissible weight of the unit when fully loaded. It includes all weights, inclusive of all fluids, cargo, optional equipment and accessories. For safety and product performance do NOT exceed the GVWR.

GAWR (Gross Axle Weight Rating) - is the maximum permissible weight, including cargo, fluids, optional equipment and accessories that can be safely supported by a combination of all axles.

UVW (Unloaded Vehicle Weight)* - is the typical weight of the unit as manufactured at the factory. It includes all weight at the unit's axle(s) and tongue or pin and LP Gas. The UVW does not include cargo, fresh potable water, additional optional equipment or dealer installed accessories.

*Estimated average based on standard build optional equipment.

CCC (Cargo Carrying Capacity)** - is the amount of weight available for fresh potable water, cargo, additional optional equipment and accessories. CCC is equal to GVWR minus UVW. Available CCC should accommodate fresh potable water (8.3 lbs per gallon). Before filling the fresh water tank, empty the black and gray tanks to provide for more cargo capacity.

** Estimated average based on standard build optional equipment

Each Forest River RV is weighed at the manufacturing facility prior to shipping. A label identifying the unloaded vehicle weight of the actual unit and the cargo carrying capacity is applied to every Forest River RV prior to leaving our facilities.

The load capacity of your unit is designated by weight, not by volume, so you cannot necessarily use all available space when loading your unit.

All information contained in this brochure is believed to be accurate at the time of publication. However, during the model year, it may be necessary to make revisions and Forest River, Inc., reserves the right to make all such changes without notice, including prices, colors, materials, equipment and specifications as well as the addition of new models and the discontinuance of models shown in this brochure. Therefore, please consult with your Forest River dealer and confirm the existence of any materials, design or specifications that are material to your purchase decision. Litho. U.S.A. FOR 1420 P/W: 2017.11.15

YOUR XLITE DEALER

2018

Extra Large Cabinets
with Base Shelf and
Frosted Glass Inserts

Stainless Steel
Appliance Package

Recessed Stove
with Glass Cover

"High Definition"
Countertops

Interior features

SOME FEATURES SHOWN HAVE LIMITED AVAILABILITY.

263BHXL BUNK UNIT PICTURED

Mushroom Style
LED Interior Lights

Modern Roller Shades
in Living Areas

Beauflor® Linoleum Scratch,
Tear, and Cold Crack
Resistant Flooring.

Double-Stitched
pillow Back Jiffy Sofa



27REI



TIFFANY LEATHER
8133 LBS

SHOWN WITH STANDARD
BEAUFLO® PLANK WOOD
LINOLEUM, CUSTOMER-
SUPPLIED TV



BED STORES AWAY, FULLY MADE
IN UNDER 10 SECONDS.