



THE SIGN OF COMFORT

EN

Gravity discharge toilet
instruction manual



Model 310 Gravity-Flush Toilet

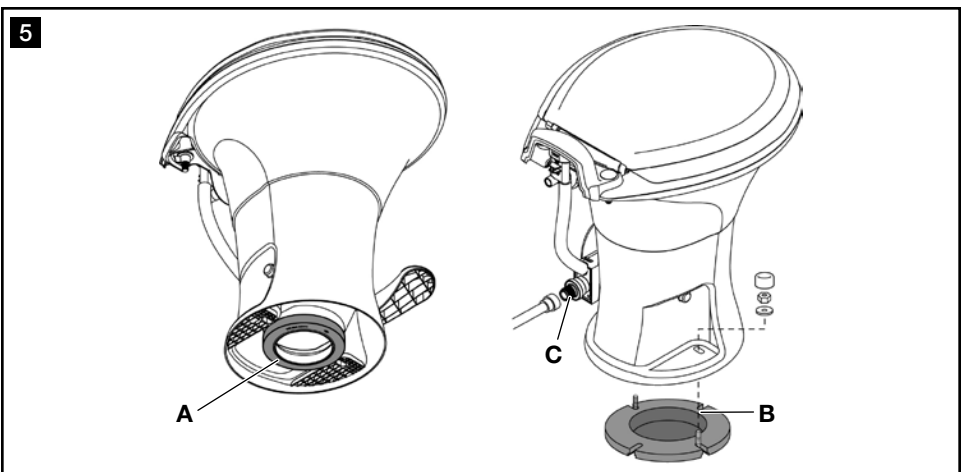
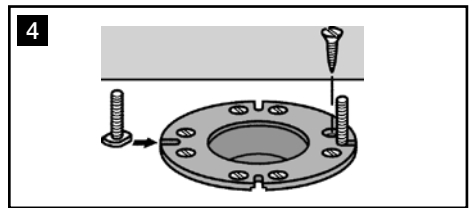
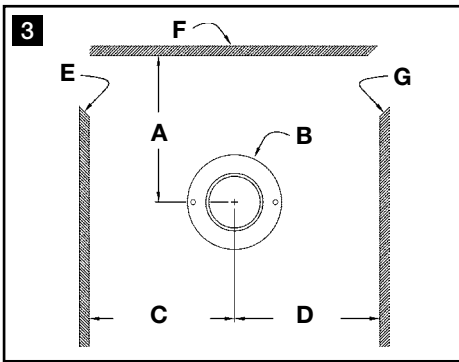
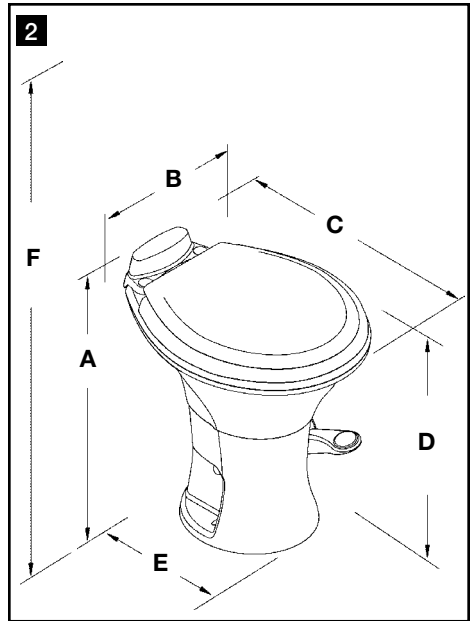
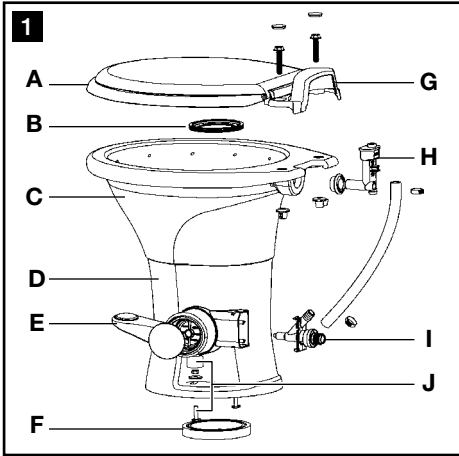


Table of contents

EN

1	Notes on using the manual	3
2	General safety instructions	3
3	Intended use	4
4	Specifications	4 - 5
5	Components	5
6	Installation	5 - 6
7	Operation	6
8	Cleaning	6 - 7
9	Winterization and storage	7
10	Troubleshooting	8
11	Warranty	9 - 10
12	Customer service	11

1 Notes on using the manual



Caution!

Safety Instruction: Failure to observe this instruction can cause material damage and impair the function of the device.



Note

Supplementary information for operating the device.

fig. **1** A, page 2 : This refers to an element in an illustration. In this example, item A in figure 1 on page 2.

2 General safety instructions

The manufacturer will not be held liable for claims for damage resulting from the following:

- Faulty installation or connection
- Damage to the unit from mechanical influences, misuse or abuse
- Alterations to the unit without express written permission from the manufacturer
- Use for purposes other than those described in this manual

2.1 Warnings

The following statements must be read and understood before installing, servicing and/or operating this product. Modification of this product may result in property damage.

1. Do not use chlorine or caustic chemicals, such as laundry bleach or drain-opening types, in the system. These products damage the seals in toilets and other plumbing valves.
2. Do not permit foreign objects (paper towels, paper cups, diapers, sanitary napkins, etc.) to be flushed through the toilet.
3. Mechanical seal toilets are designed to only discharge directly into a holding tank. Horizontal pipe runs as found in conventional residential or commercial plumbing systems cannot be accommodated.
4. Toilet bowl must be regularly cleaned and winterized according to "Cleaning" and "Winterization and Storage" procedures on pages 6-7, or your warranty coverage may be voided.

3 Intended use

Dometic model 310 toilet provides a lightweight, residential-size toilet for installation directly above a holding tank.

3.1 Benefits

PowerFlush technology. Improved pressurized rim flow creates high-speed vortex of water for full bowl rinsing.

Premium user comfort. Full-size seat, deep bowl and 18-in. (457 mm) seat height result in greater homelike performance.

Easy installation. Two-bolt design fits most existing toilet floor flanges – great for new or replacement installations. Just place on floor flange, tighten bolts, connect water, and it's ready.

Compact design. Small footprint and 10-inch (254 mm) rough-in fits in most any restroom.

Ergonomically enhanced pedal operation. Lower pedal height for easier use; “one-direction” action to add water and flush.

4 Specifications

4.1 Materials

Toilet bowl: vitreous ceramic

Foot pedal: polypropylene

Toilet seat: polypropylene

Water valve: polypropylene

Flush ball seal: nitrile butyl rubber

Vacuum breaker: ABS/polypropylene

Toilet base: polypropylene

Floor seal: nitrile rubber, foam

4.2 Minimum installation requirements

Water Supply	Fitting	0.5 in. NPT
	Flow rate	3.0-5.0* gpm / 11.4-18.9 lpm recommended 2.0 gpm / 9.5 lpm minimum
	Static pressure	30-100 PSI / 206.8-689.5 kPa
Discharge	Floor flange	3 in./76 mm ID

* Water supply that exceeds 5.0 gpm may require a flow restrictor at toilet inlet.
Specifications subject to change without notice.

4.3 Toilet Dimensions (fig. 2, page 2)

Ref.	Dimension
A	20 in. / 508 mm
B	15 in. / 381 mm
C	19 in. / 483 mm
D	18 in. / 457 mm - seat height
E	14.75 in. / 375 mm
F	33 in. / 838 mm - seat lid up

4.4 Rough-in dimensions (fig. 3, page 2)

Ref.	Dimension/Description
A	10 in. / 254 mm
B	Floor flange
C	11 in. / 279 mm
D	11 in. / 279 mm

Ref.	Dimension/Description
E	Left wall
F	Back wall
G	Right wall

5 Components (fig. 1, page 2)

Ref.	Description
A	Toilet seat
B	Flush ball seal
C	Toilet bowl
D	Toilet base
E	Flush pedal
F	Floor flange seal

Ref.	Description
G	Vacuum breaker cover
H	Vacuum breaker
I	Water valve
J	Floor mounting hardware kit

Refer to complete parts list (packed separately) for additional information.

6 Installation



Note

Be sure to follow recommended installation requirements in section 4.2 of this manual.

6.1 Tools required

- pliers or adjustable wrench
- 7/16-in. / 11 mm wrench

6.2 Toilet installation

1. To replace an older toilet, turn off water supply to toilet. Remove and drain water supply line. Remove toilet hold-down bolts/screws. Remove toilet from floor. Remove and discard old floor flange seal and hold-down bolts. Verify center of floor flange is at least 10 inches / 254 mm from back wall (fig. 3 A, page 2). Make sure top surface of floor flange is clean and free of any debris or sealant.
2. If installing a new floor flange, make certain that toilet mounting holes are located at the correct angle (fig. 3 B, page 2). Floor flange must be secured to floor with a minimum of four screws (8 is preferred). Insert two supplied T-bolts into slots in floor flange (fig. 4, page 2)
3. Verify that floor flange seal is installed on base of toilet (fig. 5 A, page 2). Carefully set toilet over floor flange. Align holes in toilet base with T-bolts as toilet is lowered onto floor flange. Toilet must be aligned so that outlet of base fits inside of floor flange outlet hole.

**Note**

Base will not rest on floor at this point. Floor seal must be compressed in following steps.

4. Install floor mounting nuts and washers onto T-bolts. Carefully torque nuts to 30-40 inch-pounds. DO NOT OVERTIGHTEN. Alternate between sides when tightening to prevent distortion of base. When tight, base should be securely attached and flat against floor. Attach bolt covers onto nuts. (Fig. 5 B, page 2)
5. If toilet is being installed in a shower stall apply a bead of caulk around base of toilet to prevent water seepage under base.
6. Connect water supply line and torque connection to 30-40 inch-pounds. DO NOT OVERTIGHTEN. (Fig. 5 C, page 2)
7. Turn on water supply line. Flush toilet several times and check for leaks.

7 Operation

7.1 Add water to bowl

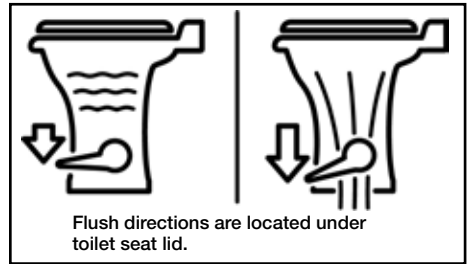
To add water to the toilet, press the flush pedal part way down. Water flows into the bowl while flush ball remains closed. If the flush ball moves, let up on the pedal slightly. Adding water to an empty bowl helps prevent holding tank odors from entering the living space. Adding water is recommended prior to flushing solids and toilet paper.

7.2 Flush toilet

To flush, press pedal down until it contacts the floor. Release pedal after complete flush.

- When flushing liquids, press the pedal for 1-2 seconds.
- When flushing solids, press pedal until contents are rinsed from bowl. Flushing longer than necessary will cause holding tank to fill too quickly.

A small amount of water will collect in the bowl after a flush to create an airtight seal.

**Note**

To prevent holding tank odors from entering the living space, make sure a small amount of water remains in the toilet bowl.

8 Cleaning

8.1 Routine toilet cleaning

For routine cleaning, use SeaLand® Toilet Bowl Cleaner. If you cannot find it in your area, contact Dometic for your nearest dealer. If the cleaner is not available, use most any non-abrasive bathroom and toilet bowl cleaner (Bar Keeper's Friend® spray cleaner, Clorox® toilet bowl cleaner, SaniFlush® toilet bowl cleaner, etc.). Please follow label instructions.

To avoid damaging the seal, Do not use:

- abrasives (Comet®, Soft Scrub® cleansers, etc.)
- caustic chemicals (Drano® clog remover, etc.)
- lubricants and cleaners containing alcohols or petroleum distillates (Pam® cooking spray, Pine-Sol® cleaner, WD-40® lubricant, etc.).

8.2 Flush ball/seal cleaning

After a period of time, mineral deposits from hard water may build up on the flush ball or seal, resulting in a slow water leak. To prevent this, periodically clean the flush ball and seal.

1. Remove minor debris from the flush ball and seal by slowly pressing and releasing the flush pedal several times. This will loosen and rinse debris from the surfaces. Repeat several times for stubborn buildup.
2. If step 1 does not fully clean the ball and seal, they may be cleaned using a soft bristle brush and Dometic toilet bowl cleaner. Fully clean the topside of the flush ball and the underside of the seal where it contacts the flush ball. After cleaning underside of seal, apply light downward pressure to top of seal while brushing around full perimeter of seal.
3. If the above two steps do not correct a leaking seal, the seal may require replacement.



9 Winterization and storage

When a Dometic toilet is stored for long periods of time or may be exposed to temperatures below freezing, the toilet must be winterized or stored according to one of the following procedures.



Note

Use nontoxic antifreeze designated for potable water systems. (See vehicle owner's manual.)



Caution

Never use automotive-type antifreeze in freshwater systems.

9.1 Storage options

Non-toxic Antifreeze Winterization (recommended method)

1. Pour antifreeze in potable water tank according to instructions from antifreeze manufacturer.
2. Flush toilet several times until antifreeze has flowed completely through toilet. For toilets with hand sprayer, the hand sprayer must be turned on to assure antifreeze is cycled through the sprayer.

Drain Water from Toilet

1. Turn off water supply to toilet.
2. Remove water supply line from water valve.
3. Place a small container under water valve inlet to catch draining water.
4. Press flush pedal and allow water to completely drain from water valve and vacuum breaker.

Remove Water Valve and Vacuum Breaker

1. Remove water valve (fig. **1** I, page 2) by disconnecting water supply hose and hose from vacuum breaker, pressing on top and bottom latches, and pulling it from water valve housing.
2. Remove vacuum breaker (fig. **1** H, page 2) by disconnecting hose from water valve and pulling it out of sealing grommet in back of toilet.
3. Store water valve and vacuum breaker in heated area.

10 Troubleshooting

Problem	Possible Cause	Service Instruction
1. Odor from toilet when flush ball is open.	<ul style="list-style-type: none"> a. Plugged holding tank vent. b. Odor from holding tank contents. 	<ul style="list-style-type: none"> a. Clear obstruction from vent. b. Add deodorant to holding tank.
2. Odor from toilet when flush ball is closed.	<ul style="list-style-type: none"> a. No water in bowl. b. Damaged flush ball seal. c. Damaged floor flange seal. 	<ul style="list-style-type: none"> a. Add water to bowl. b. Replace seal. c. Replace floor seal.
3. Water will not stay in bowl.	<ul style="list-style-type: none"> a. Flush ball or seal is dirty. b. Worn or damaged flush ball seal. 	<ul style="list-style-type: none"> a. Clean flush ball and seal. b. Replace seal.
4. Flush ball will not close completely.	<ul style="list-style-type: none"> a. Too much friction between flush ball and seal. 	<ul style="list-style-type: none"> a. Clean and lubricate flush ball and seal with silicone spray or furniture polish.
5. Water flow into toilet will not stop.	<ul style="list-style-type: none"> a. Worn or defective water valve. 	<ul style="list-style-type: none"> a. Replace water valve.
6. Water does not enter toilet bowl properly.	<ul style="list-style-type: none"> a. Insufficient water flow rate at toilet inlet. b. Screen at water valve inlet is clogged. c. Water valve is clogged. d. Water valve is worn or damaged. e. Plugged rim wash holes in toilet. 	<ul style="list-style-type: none"> a. Make sure flow rate at toilet inlet is 3.0-5.0 gpm / 11.4-18.9 lpm (recommended rate). b. Remove and clean screen. c. Remove and clean out water valve. d. Replace water valve. e. Clean rim wash holes.
7. Hand sprayer leaks.	<ul style="list-style-type: none"> a. Hand sprayer is defective. 	<ul style="list-style-type: none"> a. Replace hand sprayer.
8. Water is leaking from water valve.	<ul style="list-style-type: none"> a. Water line connection is loose or not seated properly. b. Water valve is damaged or defective. 	<ul style="list-style-type: none"> a. Insure that threads are not cross-threaded and tighten connection. b. Replace water valve.
9. Water is leaking from toilet base.	<ul style="list-style-type: none"> a. Toilet is not secure to floor. b. Worn or defective floor flange seal. 	<ul style="list-style-type: none"> a. Tighten toilet mounting bolts. b. Replace floor flange seal.
10. Water is leaking from rear of toilet.	<ul style="list-style-type: none"> a. Loose vacuum breaker. b. Worn or defective vacuum breaker. c. Cracked or defective toilet bowl. 	<ul style="list-style-type: none"> a. Make sure vacuum breaker stem is pushed fully into sealing grommet in back of bowl. b. Replace vacuum breaker. c. Replace toilet.

11 Warranty and product liability

North America and Rest of the World:

Manufacturer's Two-Year and Ten-Year Limited Warranty

Dometic Corporation warrants, to the original purchaser only, that this Dometic® gravity discharge toilet, if used for personal, family or household-like purposes, is free from defects in material and workmanship for a period of two (2) years from the date of purchase.

Dometic also warrants, to the original purchaser only, that the ceramic portion of the toilet bowl will not discolor, stain, scratch or craze for a period of ten (10) years if used for personal, family or household-like purposes, and is regularly cleaned as described in the product owner's manual.

If this Dometic product is placed in commercial or business use, it will be warranted, to the original purchaser only, to be free of defects in material and workmanship for a period of ninety (90) days from the date of purchase.

Dometic reserves the right to replace or repair any part of this product that proves, upon inspection by Dometic, to be defective in material or workmanship. All labor and transportation costs or charges incidental to warranty service are to be borne by the purchaser-user.

EXCLUSIONS

IN NO EVENT SHALL DOMETIC BE LIABLE FOR INCIDENTAL OR CONSEQUENTIAL DAMAGES, FOR DAMAGES RESULTING FROM IMPROPER INSTALLATION, OR FOR DAMAGES CAUSED BY NEGLIGENCE, ABUSE, ALTERATION, OR USE OF UNAUTHORIZED COMPONENTS. THIS INCLUDES FAILURES WHICH MAY RESULT FROM NOT FOLLOWING THE WINTERIZATION OR CLEANING PROCEDURES AS DESCRIBED IN THIS OWNER'S MANUAL. ALL IMPLIED WARRANTIES, INCLUDING ANY IMPLIED WARRANTY OF MERCHANTABILITY OR FITNESS FOR ANY PARTICULAR PURPOSE, ARE LIMITED TO A PERIOD OF ONE (1) YEAR FROM DATE OF PURCHASE.

IMPLIED WARRANTIES

No person is authorized to change, add to, or create any warranty or obligation other than that set forth herein.

Implied warranties, including those of merchantability and fitness for a particular purpose, are limited to one (1) year from the date of purchase for products used for personal, family or household-like purposes, and ninety (90) days from the date of purchase for products placed in commercial or business use.

OTHER RIGHTS

Some states do not allow limitations on the duration of an implied warranty, and some states do not allow exclusions or limitations regarding incidental or consequential damages; so, the above limitations may not apply to you. This warranty gives you specific legal rights, and you may have other rights which vary from state to state.

To obtain warranty service, first contact the local dealer from whom the product was purchased or go to <http://www.dometic.com/enus/Americas/USA/Customer-Support/> for a dealer near you.

Europe:**Warranty and Customer Service**

Warranty arrangements are in accordance with EC Directive 44/1999/CE and the normal conditions applicable for the country concerned. For warranty or other service, please contact our Dometic Customer Service department listed elsewhere in this manual. Any damage due to improper use is not covered by the warranty.

The warranty does not cover any modifications to the product or the use of non-original Dometic parts; the warranty does not apply if the installation and operating instructions are not adhered to and no liability shall be entertained.

Product Liability

Product liability of Dometic Group and its subsidiary companies does not include damages which may arise from: faulty operation; improper alterations or intervention in the equipment; adverse effects from the environment which may impact the equipment itself or the direct vicinity of the equipment or persons in the area.

To obtain warranty service, first contact your local dealer from whom you purchased this product or go to <http://www.dometic.com/enuk/Europe/United-Kingdom/Customer-Center/> for a dealer near you.

12 Customer service

12.1 Toilet model identification

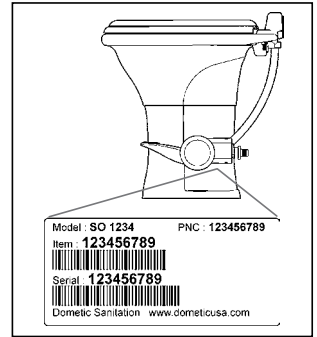
The toilet model identification label is located on the toilet base under the water valve. Please have this information ready if contacting Dometic for customer service.

12.2 Contact information

There is a strong, worldwide network to assist in servicing and maintaining your toilet system. For the Authorized Service Center near you, please call from 8:00 a.m. to 5:00 p.m. (ET) Monday through Friday.

You may also contact or have your local dealer contact the Parts Distributor nearest you for quick response to your replacement parts needs. They carry a complete inventory for the Dometic product line.

Telephone:	1 800-321-9886	U.S.A. and Canada
	330-496-3211	International
Fax:	330-496-3097	U.S.A. and Canada
	330-496-3220	International
Web sites:	http://www.Dometic.com	
	http://www.DometicSanitation.com	



Dometic Group is a customer-driven, world-leading provider of leisure products for the RV, automotive, truck and marine markets. We supply the industry and aftermarket with a complete range of air conditioners, refrigerators, awnings, cookers, sanitation systems, lighting, mobile power equipment, comfort and safety solutions, windows, doors and other equipment that make life more comfortable away from home.

Dometic Group supplies a wide range of workshop equipment for service and maintenance of built-in air conditioners. Dometic Group also provides specially designed refrigerators for hotel rooms, offices, wine storage and transport and storage of medical products.

Our products are sold in almost 100 countries and are produced mainly in wholly-owned production facilities around the world.

