

SALEM HEMISPHERE

TRAVEL TRAILERS + FIFTH WHEELS

BEGIN YOUR OUTDOOR
ADVENTURES WITH A
TRUSTED BRAND



SALEM HEMISPHERE HYPER-LYTE

TRAVEL TRAILERS



FREE 2019 HYPER-LYTE VIP PACKAGE \$3,915 VALUE

- + Extra Large Max Tint Panoramic Window Package in Main Slide
- + High Rise Faucet with Pull Out Sprayer
- + Recessed Glass Stove Top Cover
- + Stainless Steel Range Hood
- + Stainless Steel Microwave
- + Back up Camera Prep
- + Solar Panel Prep
- + Solid-Step, Aluminum Entry Steps (Main Entry Door)
- + Jensen 32" LED TV with Bluetooth CD/DVD/FM/USB Player and Bar Speakers
- + 10.7 Cu. Ft. 12 Volt "Everchill" Refrigerator
- + Flip down Bike/Storage Rack
- + Friction Door Hinge, Baggage Door Magnets, Slam Latches
- + LED Awning Light
- + Power Tongue Jack with LED Docking Light
- + Denver 9" Pillow Top Mattress



NATURAL LIGHT, SKYLIGHT STANDARD IN ALL KITCHENS

SHOWN IN DOVE DECOR



40" TV OPTIONAL ON SELECT MODELS

DECORATIVE VALANCE WITH RESIDENTIAL ROLLER SHADES

XL PANORAMIC WINDOW PACKAGE

TRI-FOLD SOFAS STANDARD (WHERE APPLICABLE)

10.7 CU. FT. RESIDENTIAL 12V REFER

LARGE ENTRYWAYS INTO BATHROOMS AND BEDROOMS

SHAW® RESIDENTIAL LINOLEUM

LARGE POT AND PAN DRAWER BELOW OVEN (MOST MODELS)

OVEN WITH LED LIT KNOBS

32" FIREPLACE STANDARD ON SELECT MODELS



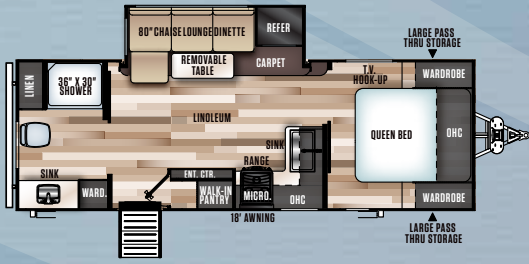
WIDE STANCE AXLES FOR IMPROVED TOWABILITY



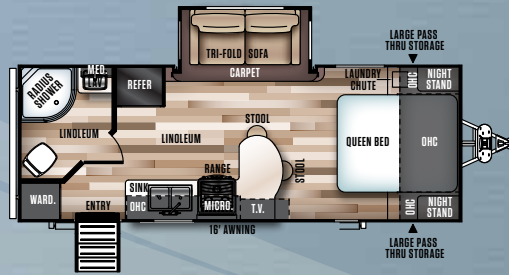
TEXAS SIZE PASS-THRU STORAGE



HUGE CAPACITY 10.7 CU. FT. 12V REFER



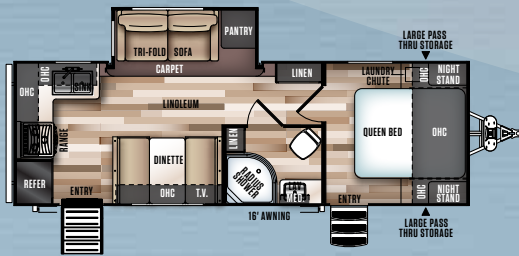
22RBHL



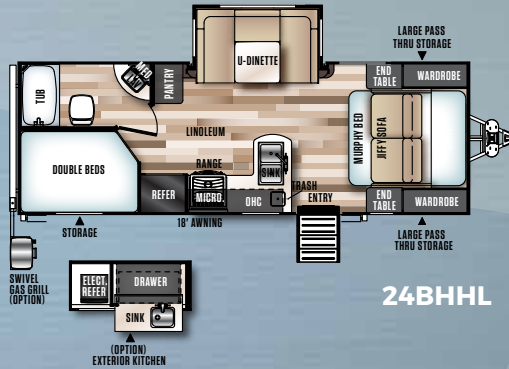
23RBHL



23BHHL



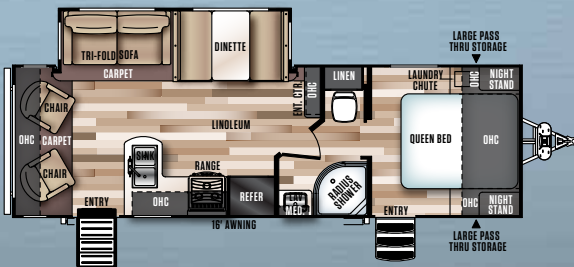
24RKHL



24BHHL



26BHHL



26RLHL



29BHHL

HYPER-LYTE

SPECIFICATIONS

TRAVEL TRAILERS

MODEL	22RBHL	23RBHL	23BHHL	24RKHL	24BHHL	26BHHL	26RLHL	29BHHL
HITCH WEIGHT (lbs)	570	520	575	565	510	TBD	625	645
AXLE WEIGHT	4805	4210	5420	4740	4570	TBD	5065	5590
UVW	5413	4768	5984	5363	5118	TBD	5728	6273
CCC (cargo cap)	2157	2752	1542	2222	2392	TBD	1897	3172
EXT LENGTH	27' 0"	25' 11"	30' 2"	28' 7"	27' 0"	33' 6"	30' 1"	32' 7"
EXT HEIGHT	10' 10"	10' 10"	10' 10"	10' 10"	10' 10"	10' 11"	10' 10"	10' 11"
FRESH WATER CAP (gal)*	48	64	48	48	48	48	48	48
BLACK WATER CAP (gal)	32	32	32	32	32	27	32	27
GREY WATER CAP (gal)	64	32	54	64	32	54	32	54
TIRE SIZE (in)	15"	15"	15"	15"	15"	15"	15"	15"
AWNING SIZE (ft)	18'	16'	21'	16'	18'	20'	16'	16'

SALEM HEMISPHERE GLX

TRAVEL TRAILERS



2-TONE PAINTED FULL FIBERGLASS FRONT CAP

FREE 2019 GLX VIP PACKAGE \$5,075 VALUE

- + Extra Large Max Tint Panoramic Window Package in Main Slide
- + Stainless Steel Single Bowl Undermount Sink w/ Roll Up Sink Cover
- + Recessed Glass Stove Top Cover
- + Stainless Steel Range Hood
- + Stainless Steel Microwave
- + Back up Camera Prep
- + Solar Panel Prep
- + Solid-Step, Aluminum Entry Steps (Main Entry Door)
- + Jensen Bluetooth CD/DVD/FM/USB Player & Bar Speakers
- + 10.7 Cu. Ft. 12 Volt "Everchill" Refrigerator
- + Denver 9" Pillowtop Mattress
- + Friction Door Hinge, Baggage Door Magnets, Slam Latches,
- + LED Awning Light
- + Power Tongue Jack w/LED Docking Light



SHOWN IN BRADFORD DECOR

XL PANORAMIC WINDOW PACKAGE IN MAIN SLIDE

DECORATIVE VALANCE WITH RESIDENTIAL ROLLER SHADES

U-SHAPED DINETTE ON SELECT BUNK MODELS

TRI-FOLD SOFA STANDARD WHERE APPLICABLE

50" TV ON SELECT TRAVEL TRAILER MODELS

NATURAL LIGHT, SKYLIGHT STANDARD IN ALL KITCHENS

RESIDENTIAL VAULTED CEILINGS



JENSEN® SPEAKERS, BLUETOOTH STEREO AND DVD PLAYER

HIGH RISE FAUCET W/ PULL DOWN SPRAYER

RANGE W/ GLASS STOVE TOP COVER

32" LINEAR CRYSTAL FIREPLACE

LED LIT RESIDENTIAL OVEN

LARGE POT AND PAN DRAWER BELOW OVEN ON MOST MODELS

SHAW RESIDENTIAL LINOLEUM



WARDROBE STORAGE TO ACTUALLY ACCOMMODATE HANGING CLOTHES!





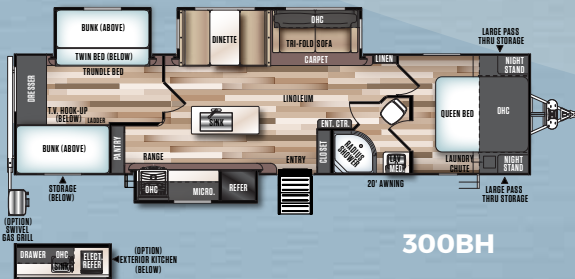
269RL



273RL



283RK



300BH



309BOK



314BUD



322BH



326RL

HEMISPHERE GLX

SPECIFICATIONS

TRAVEL TRAILERS

MODEL	269RL	273RL	283RK	300BH	309BOK	314BUD	322BH	326RL
HITCH WEIGHT (lbs)	730	845	700	880	800	960	990	977
AXLE WEIGHT	5390	6390	6040	7500	6160	7335	7025	7168
UVW	6179	7294	6799	8439	7019	8354	7986	8204
CCC (cargo cap)	3351	2351	2701	1401	2581	1566	1876	1733
EXT LENGTH	33' 3"	34' 4"	35' 0"	37' 5"	35' 10"	39' 0"	37' 4"	37' 10"
EXT HEIGHT	11' 1"	11' 1"	11' 4"	11' 2"	11' 2"	11' 2"	11' 2"	11' 2"
FRESH WATER CAP (gal)*	48	48	48	48	48	48	48	48
BLACK WATER CAP (gal)	30	30	27	32	32	64	64	27
GREY WATER CAP (gal)	60	48	54	96	59	77	64	32
TIRE SIZE (in)	15"	15"	15"	15"	15"	15"	15"	15"
AWNING SIZE (ft)	20'	20'	21'	20'	20'	18'	20'	12'

SALEM HEMISPHERE GLX

FIFTH WHEELS

FREE 2019 GLX VIP PACKAGE \$5,075 VALUE

- + Extra Large Max Tint Panoramic Window Package in Main Slide
- + Stainless Steel Single Bowl Undermount Sink w/ Roll Up Sink Cover
- + Recessed Glass Stove Top Cover
- + Stainless Steel Range Hood
- + Stainless Steel Microwave
- + Back up Camera Prep
- + Solar Panel Prep
- + Solid-Step, Aluminum Entry Steps (Main Entry Door)
- + Jensen Bluetooth CD/DVD/FM/USB Player & Bar Speakers
- + 10.7 Cu. Ft. 12 Volt "Everchill" Refrigerator
- + Denver 9" Pillowtop Mattress
- + Friction Door Hinge, Baggage Door Magnets, Slam Latches,
- + LED Awning Light



SHOWN IN DOVE DECOR



YACHT TRIM
CEILING
BATTENS

HIGH RISE
FAUCET W/
PULL DOWN
SPRAYER

RANGE W/
GLASS STOVE
TOP COVER

10.7 CU. FT.
STAINLESS
STEEL
12V REFER

LED LIT
RESIDENTIAL
OVEN W/ DRAWER
(MOST MODELS)

LG® SOLID
SURFACE
COUNTERTOPS

SIDE MOUNTED
HEAT DUCTS IPO
FLOOR REGISTERS

SHAW
RESIDENTIAL
LINOLEUM



50" LED TV
STANDARD
(N/A 295BH)

DECORATIVE
VALANCE WITH
RESIDENTIAL
ROLLER SHADES

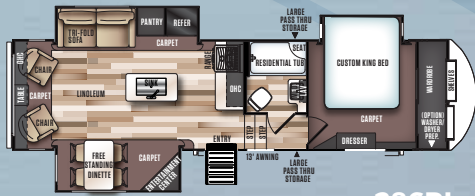
JENSEN®
SPEAKERS,
BLUETOOTH
STEREO AND
DVD PLAYER

32" LINEAR
CRYSTAL
FIREPLACE

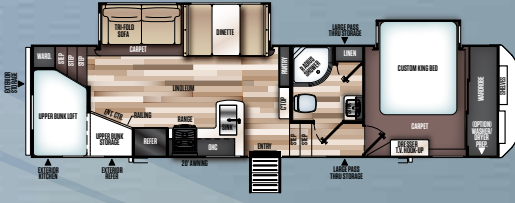


STACKABLE
WASHER/DRYER
PREP STANDARD

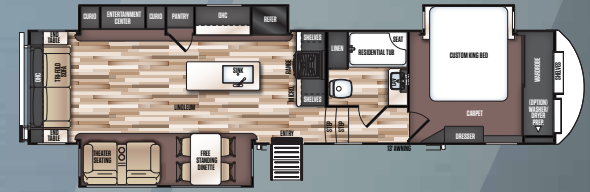




286RL



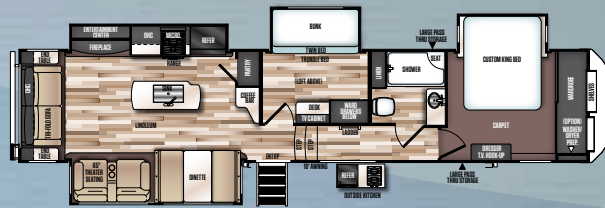
295BH



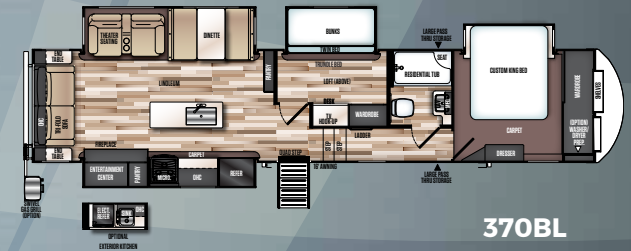
338BAR



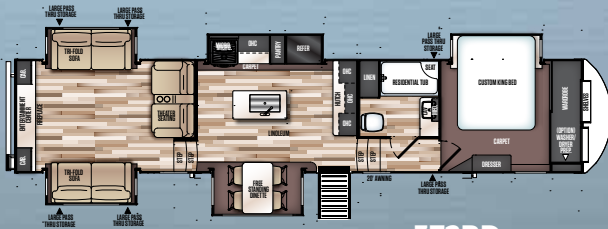
356QB



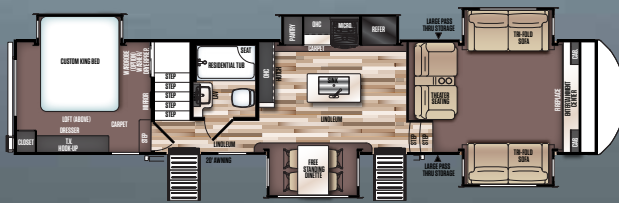
369BL



370BL



372RD



378FL



HEMISPHERE GLX

SPECIFICATIONS

FIFTH WHEELS

MODEL	286RL	295BH	338BAR	356QB	369BL	370BL	372RD	378FL
HITCH WEIGHT (lbs)	1625	1985	2135	1790	TBD	2275	2125	2140
AXLE WEIGHT	6815	7290	8070	9400	TBD	9190	8965	9390
UVW	8499	9334	10264	11249	TBD	11524	11149	11589
CCC (cargo cap)	2086	2851	2071	2541	TBD	2751	2976	2551
EXT LENGTH	34' 1"	36' 0"	38' 6"	42' 3"	43' 1"	41' 6"	42' 8"	43' 5"
EXT HEIGHT	12' 7"	12' 7"	13' 2"	13' 2"	13' 1"	13' 1"	13' 3"	13' 6"
FRESH WATER CAP (gal)*	48	48	48	48	48	48	48	48
BLACK WATER CAP (gal)	30	30	30	60	30	30	30	27
GREY WATER CAP (gal)	62	80	62	57	62	80	60	57
TIRE SIZE (in)	15"	16"	16"	16"	16"	16"	16"	16"
AWNING SIZE (ft)	13'	20'	13'	21'	18'	16'	20'	20'

SALEM HEMISPHERE

Elite Series

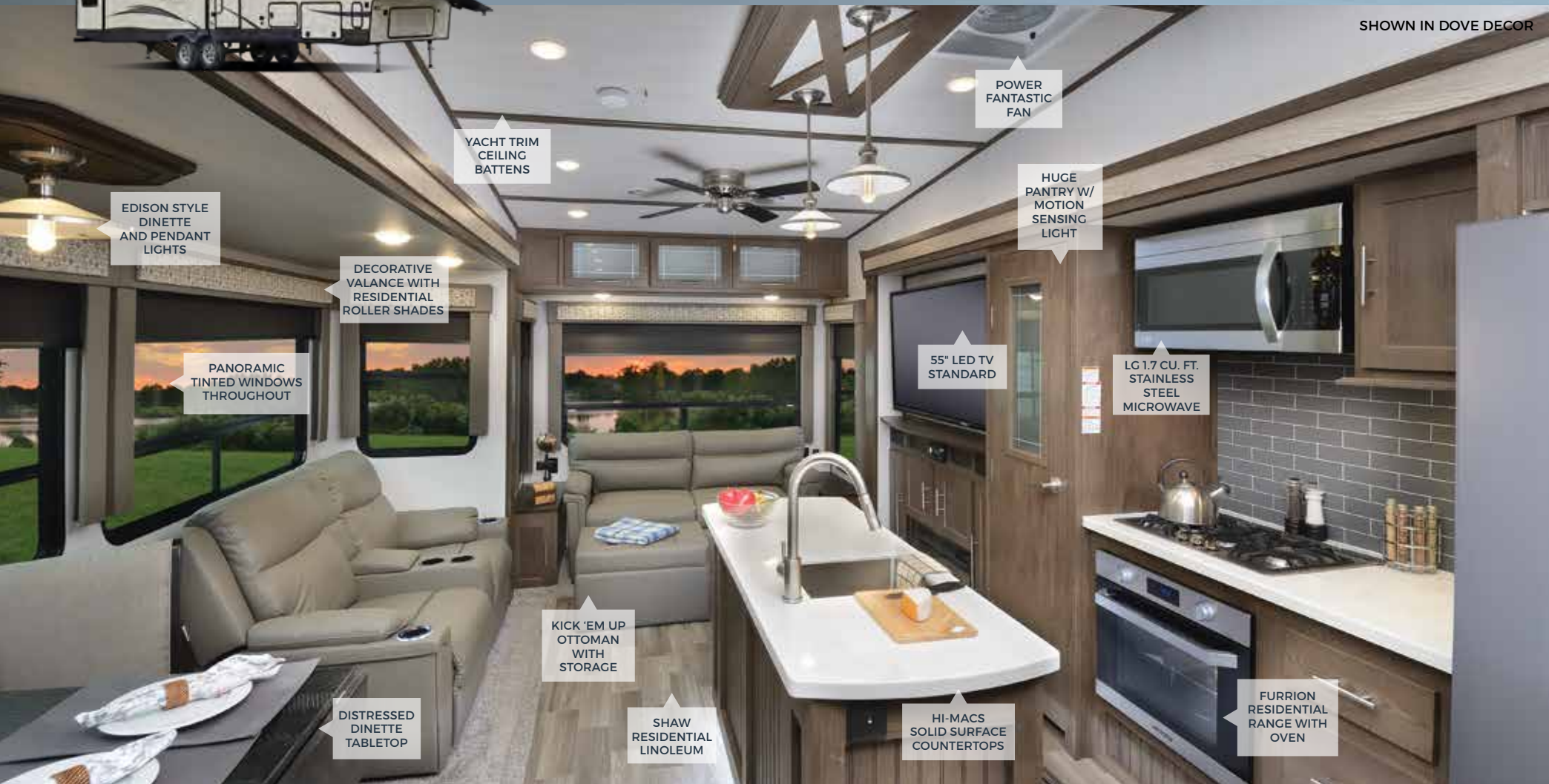
FIFTH WHEELS

Elite (noun): A select part of a group that is superior to the rest in terms of ability, rank, skill set and qualities.

Elite Series by Hemisphere is the answer to a High Profile Luxury Fifth Wheel affordable to America's Working Class. Loaded with features you've asked for and the amazing value you have come to know in the Hemisphere Brand, America's Trusted Brand.



SHOWN IN DOVE DECOR



EDISON STYLE
DINETTE
AND PENDANT
LIGHTS

PANORAMIC
TINTED WINDOWS
THROUGHOUT

DECORATIVE
VALANCE WITH
RESIDENTIAL
ROLLER SHADES

YACHT TRIM
CEILING
BATTENS

KICK 'EM UP
OTTOMAN
WITH
STORAGE

DISTRESSED
DINETTE
TABLETOP

SHAW
RESIDENTIAL
LINOLEUM

55" LED TV
STANDARD

HI-MACS
SOLID SURFACE
COUNTERTOPS




POWER
FANTASTIC
FAN

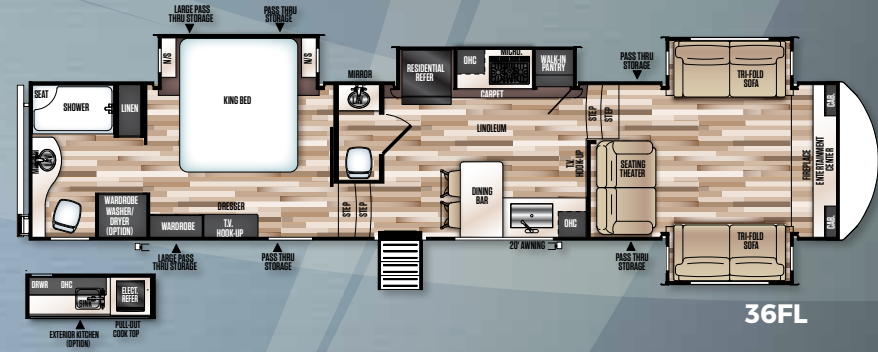
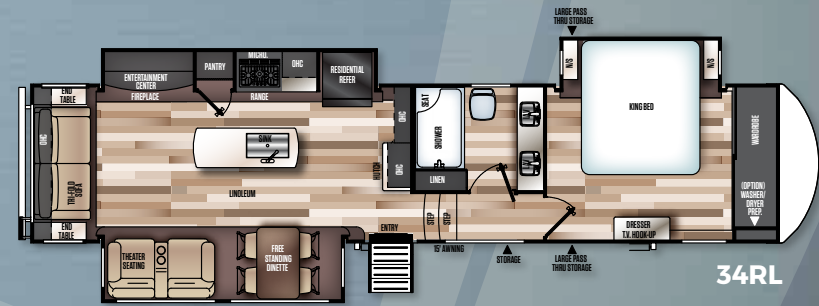
HUGE
PANTRY W/
MOTION
SENSING
LIGHT

LG 1.7 CU. FT.
STAINLESS
STEEL
MICROWAVE

FURRION
RESIDENTIAL
RANGE WITH
OVEN

FREE 2019 ELITE SERIES VIP PACKAGE \$5,365 VALUE

- + Power Fantastic Fan in Kitchen
- + LG® Hi-Macs Genova Luxurious Kitchen Countertops 
- + Upgraded Bedding Package and Headboard
- + 1.7 Cu. Ft. OTR 30" Stainless Steel Microwave
- + Panoramic Tinted Safety Glass Windows Throughout
- + Stainless Steel Gas Cooktop with Built-in Oven w/ LED Lit Knobs
- + King Wifi Router/Range Extender 
- + Denver 72" x 80" King Pillowtop Mattress 
- + Kick 'em Up Ottoman with Huge Storage in Living Room



FOR A MORE COMPREHENSIVE LOOK AT OUR FLOORPLANS AND 360° TOURS PLEASE VISIT WWW.FORESTRIVERINC.COM

ELITE SERIES FIFTH WHEELS

SPECIFICATIONS

MODEL	34RL	36FL
HITCH WEIGHT (lbs)	2005	TBD
AXLE WEIGHT	9065	TBD
UVW	11129	TBD
CCC (cargo cap)	2876	TBD
EXT LENGTH	39' 4"	TBD
EXT HEIGHT	13' 2"	13' 4"
FRESH WATER CAP (gal)*	48	48
BLACK WATER CAP (gal)	52	TBD
GREY WATER CAP (gal)	79	TBD
TIRE SIZE (in)	16"	16"
AWNING SIZE (ft)	16'	20'



STANDARDS AND OPTIONS

S - STANDARD O - OPTION P - VIP PACKAGE

CONSTRUCTION AND EQUIPMENT	HL	GLX TT	GLX FW	ELITE
Dexter Axles w/15" Radial Tires (16" Select Models) & Aluminum Wheels	S	S	S	S
Full Wrap Around Aerodynamic Front Cap w/ Led Light Strip (TT's & FW)		S	S	S
2-Tone Painted Fiberglass Front Cap		S	S	S
Wide Track Suspension	S	S		
Aluminum-Framed Vacuum-Bonded Construction	S	S	S	S
Gel Coated Fiberglass Exterior	S	S	S	S
Laminated Sidewalls	S	S	S	S
Laminated Aluminum Framed Floor	S	S	S	S
6'5" Full Walk-In 5th Wheel Slide-Outs (N/A Bed Slides)			S	S
One Level, Full Stand-Up Height 5th Wheel Upper Decks			S	S
Solid Step Main Entry Steps (Main Entry Door)	P	P	P	P
30" Smooth Fiberglass Radius Main Entry Door w/ Friction Hinge	S	S	S	S
Swing Arm Entry Assist Handle	S	S	S	S
Extra Large Full Pass-Thru Storage w/ Slam latches (per floorplan)	S	S	S	S
One Touch Electric Awning w/ Adjustable Legs (1 year warranty)	S	S	S	S
Marine Grade Exterior Speakers w/ Blue LED Light	S	S	S	S
Exterior TV Bracket w/ Cable and Power Outlet	S	S	S	S
Upgraded ABS Fender Skirts	S	S	S	S
Interior Grab Handle at Entry Door	S	S	S	S
Powder Coated I-Beam Frame	S	S	S	S
Cambered Chassis	S	S	S	S
Water Heater By-Pass	S	S	S	S
5th Wheel Docking Station			S	S
Norco Cable Slide Out Systems	S			
Rack & Pinion Power Flush Floor Slide-Out Systems		S	S	S
16 Gal. per Hour G/E Quick Recovery DSI Water Heater (2 yr. Warranty)	S	S	S	S
Stabilizer Jacks	S	S	S	S
Backer For Rear Ladder		S	S	S
Full Walk-on Roof	S	S	S	S
Power Front Landing Gear (5th Wheels)			S	S

	HL	GLX TT	GLX FW	ELITE
One Piece Seamless Roof (12 yr. Warranty)	S	S	S	S
Tinted Safety Glass Windows	S	S	S	S
Black Tank Flush	S	S	S	S
Fold Down Bike Rack	P			
Spare Tire	S	S	S	S
Outside Shower	S	S	S	S
Enclosed & Heated Under Belly w/ Radiant Heated Tanks	S	S	S	S
Heated Holding Tanks (Heat Pads)				S
15K A/C	O	S	S	S
50 AMP Service w/ Wire Brace for 2nd A/C & Washer/Dryer Prep			S	S
Ceiling Fan			S	S
10 Gal. Gas/Elec DSI Water Heater			S	S

KITCHEN

	HL	GLX TT	GLX FW	ELITE
Stainless Steel Everchill 12V Residential Refrigerator	P	P	P	
One Piece Solid Surface Beveled Countertop	S	S	S	S
Large Deep Bowl Residential Sink	S	S	S	S
Decorative Midnight Metal Subway Style Backsplash	S	S	S	S
Stainless Steel Roll up Sink Cover	S	S	S	
Microwave w/ Carousel (1 Year Warranty)	S	S	S	S
High Arc Pull down Sprayer Kitchen Faucet	S	S	S	S
Vented Range Hood w/ Light	S	S	S	
Shaw Guardian Hickory Way Linoleum	S	S	S	S
Solid Wood Drawer Fronts w/ Full Extension Ball Bearing Guides	S	S	S	S
Solid Wood Framed Shaker Style Cabinet Doors w/ Hidden Hinges	S	S	S	S
Larger Overhead Cabinets (Per Floorplan)	S	S	S	S
Wall-Mounted Systems Monitor Panel	S	S	S	S
Brushed Nickel Hardware	S	S	S	S
Pots and Pans Drawer Below Oven (Per Floorplan)	S	S	S	S
Skylight in Kitchen (Most Floorplans)	S	S	S	S
22 Cu. Ft. SS French Door Refer w/ Ice Maker				S
Solid Surface Sink Covers				S
Large Residential Pantry (Per Floorplan)	S	S	S	S

LIVING ROOM

	HL	GLX TT	GLX FW	ELITE
Shaw® Residential Stain Resistant Carpet	S	S	S	S
Residential Roller Shades with Decorative Valance	S	S	S	S
Deluxe Dinette Tabletop	S	S	S	S
Solid Wood Drawer Fronts	S	S	S	S
Extra Large Opening Windows in Slideout	S	S	S	S
Winegard TV Antenna	S	S	S	S
Cable TV and Satellite Prep	S	S	S	S
30K or 35K BTU Furnace (2 Yr. Warranty) w/ Digital Thermostat	S	S	S	S
Tri-Fold Hide-a-Bed Sofa w/ Storage	S	S	S	S
Push Back Recliners (Per Floorplan)	S	S	S	
Large U-Shaped Dinette w/ 62" Sofa (Per Floorplan)	S	S	S	S
LED Lit Theatre Seating w/ Built-In Recliners (Per Floorplan)	S	S	S	S
Large LED HDTV w/ Jensen CD/DVD Bluetooth Stereo w/ 2 Speaker	S	S	S	S
Multiple 110 Outlets & Dual USB Ports Throughout	S	S	S	S
Electric Fireplace (Per Floorplan)	S	S	S	S

BEDROOM

	HL	GLX TT	GLX FW	ELITE
Strut Lifted Storage Area Under Bed	S	S	S	S
Load-N-Go Collapsible Storage Bins Under Bed (Per Floorplan)	S	S		
Oversized Bunks (Per Floorplan)	S	S	S	S
Solid Bedroom Privacy Doors	S	S	S	S
Tall Mirrored Wardrobes w/ 4 overhead Cabinets (Travel Trailers)	S	S		
110 Outlets and Dual USB Ports on Both Sides of Bed	S	S	S	S
72" x 80" Denver 9" Pillowtop Mattress				P
66" x 80" Denver 9" Pillowtop Mattress (Bedslides)			P	
60" x 74" Denver 9" Pillowtop Mattress (Non-Bedslides)	P	P		
Tall Window on Awning Slide			S	S
Wall Mounted TV Bracket Facing Bed			S	S
Tall Window on Awning Slide			S	S
Tall 3 Drawer Dresser (5th Wheel Bedrooms)			S	S
Night Shelf On End Of Bed Slide Out			S	S

BATHROOM

	HL	GLX TT	GLX FW	ELITE
12-Volt Power Bath Roof Exhaust Fan	S	S	S	S
Huge Residential Shower (Most Models)	S	S	S	S
Dometic Foot Flush Toilet	S	S		
Dometic Porcelain Foot Flush Toilet			S	S
Vinyl Tub Surround	S	S	S	S
30" x 50" Walk-In Shower w/ Sliding Glass Door (5th Wheels)			S	S
Stainless Steel Lavatory Sinks			S	S

SECURITY AND SAFETY

	HL	GLX TT	GLX FW	ELITE
LP Leak Detector	S	S	S	S
Smoke Detector	S	S	S	S
Carbon Monoxide Detector	S	S	S	S
Fire Extinguisher	S	S	S	S
LED Hitch Light	S	S	S	S
Battery Disconnect	S	S	S	S
Welded Heavy Duty Safety Chains (Travel Trailers)	S	S		
Electric Brakes (All Wheels)	S	S	S	S
GFI Receptacles	S	S	S	S
ANSI 119.2	S	S	S	S
LED Marker, Brake & Tail Lights	S	S	S	S
Certified to Meet National Highway Traffic Safety Administration Specs	S	S	S	S

OPTIONS

	HL	GLX TT	GLX FW	ELITE
Free-Standing Dinette w/ 4 Chairs	O	O	O	S
3/4 White Gel Coat Fiberglass Front Cap (Hyper-Lytes)	O			
Extreme Weather Package (Calc. @ R38 Floor, Front Cap and Roof)		O	O	S
Second 15K A/C in Bedroom		O	O	O
Washer/Dryer Prep w/ 50 Amp Service & Wire/Brace for Second A/C			S	S
Exterior Kitchen/Bar	O	O	O	O
4 Point & 6 Point Electric Auto Leveling (5th Wheels)			O	O
Extra Large Double Door RV Refrigerator	O	O	O	
50 AMP Service		O		
12 cu. Ft. 4 Door G/E Refer				O
14.7 110V French Door Refer			O	

FOREST RIVER HEMISPHERE



GVWR (Gross Vehicle Weight Rating) - is the maximum permissible weight of the unit when fully loaded. It includes all weights, inclusive of all fluids, cargo, optional equipment and accessories. For safety and product performance do NOT exceed the GVWR.

GAWR (Gross Axle Weight Rating) - is the maximum permissible weight, including cargo, fluids, optional equipment and accessories that can be safely supported by a combination of all axles.

UVW (Unloaded Vehicle Weight)* - is the typical weight of the unit as manufactured at the factory. It includes all weight at the unit's axle(s) and tongue or pin and LP Gas. The UVW does not include cargo, fresh potable water, additional optional equipment or dealer installed accessories.

*Estimated Average based on standard build optional equipment.

CCC (Cargo Carrying Capacity)** - is the amount of weight available for fresh potable water, cargo, additional optional equipment and accessories. CCC is equal to GVWR minus UVW. Available CCC should accommodate fresh potable water (8.3 lbs per gallon). Before filling the fresh water tank, empty the black and gray tanks to provide for more cargo capacity.

** Estimated average based on standard build optional equipment

Each Forest River RV is weighed at the manufacturing facility prior to shipping. A label identifying the unloaded vehicle weight of the actual unit and the cargo carrying capacity is applied to every Forest River RV prior to leaving our facilities.

The load capacity of your unit is designated by weight, not by volume, so you cannot necessarily use all available space when loading your unit.

All information contained in this brochure is believed to be accurate at the time of publication. However, during the model year, it may be necessary to make revisions and Forest River, Inc., reserves the right to make all such changes without notice, including prices, colors, materials, equipment and specifications as well as the addition of new models and the discontinuance of models shown in this brochure. Therefore, please consult with your Forest River dealer and confirm the existence of any materials, design or specifications that are material to your purchase

**24/7 EMERGENCY
ROADSIDE ASSISTANCE
WITH VEHICLE PURCHASE***

TOWING	WINCH-OUT
JUMP-STARTS	MOBILE MECHANIC
TIRE CHANGES	TECHNICAL
FLUID DELIVERY	SUPPORT
LOCKOUT	DEALER LOCATOR
SERVICE	SERVICES

**SAFERIDERV
MOTOR CLUB**

*VALID FOR 1 YEAR FROM DATE OF PURCHASE



www.ForestRiverBuyLocal.com



PRE-DELIVERY INSPECTION FACILITY

20,000 square feet of quality assurance. The bare essentials for a premium product. This state-of-the-art facility gives immediate daily feedback to production for quality assurance in every unit built.

FREE MEMBERSHIP
to Forest River Owners' Group

www.forestriverfrog.com



Learn More

Scan this barcode using a QR Reader on your smart phone to learn more about Forest River.



A Berkshire Hathaway company.

Forest River, Inc.
55470 C.R. 1, Elkhart, IN 46515
(574) 389-4600
www.forestriverinc.com/Hemisphere
www.forestriveraccessories.com

YOUR LOCAL HEMISPHERE DEALER