

# ARCTIC WOLF

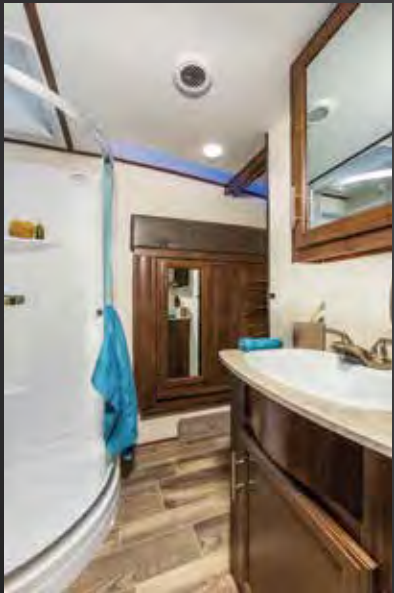


ARCTIC WOLF FIFTH WHEELS



CHERKEE  
LIGHTWEIGHTS

**DURABILITY, DRIVABILITY & DESIGN**



# ARCTIC WOLF

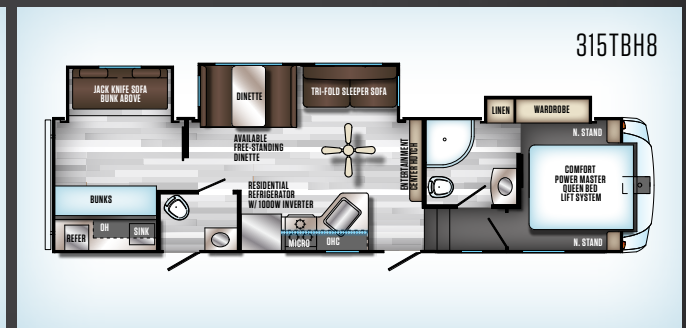
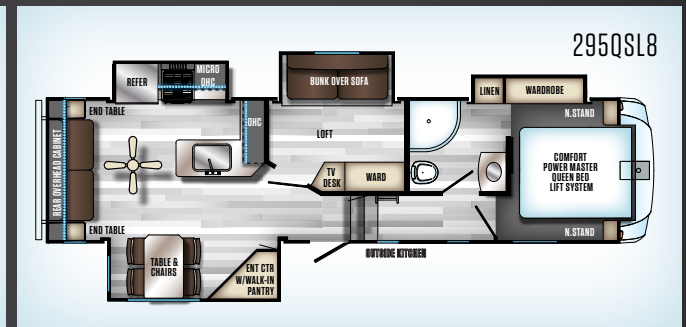
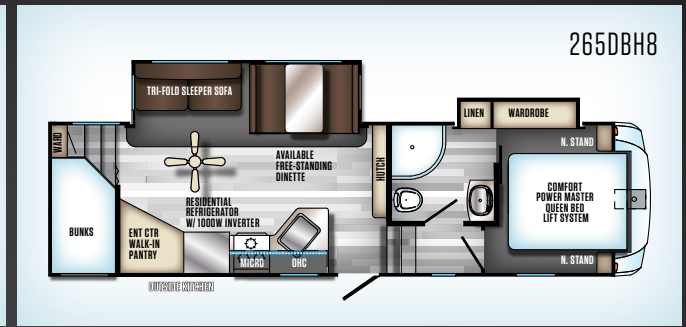
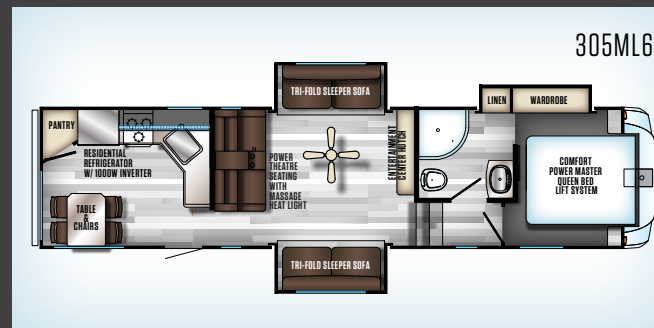
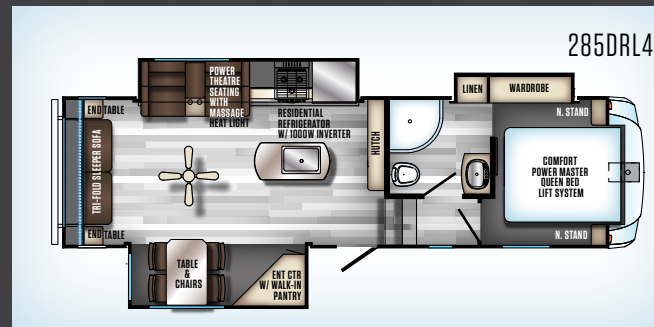
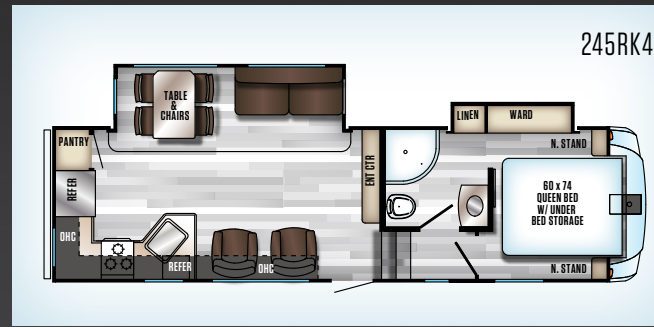
## DURABILITY, DRIVABILITY & DESIGN

More than a slogan, we strive to be best in class every day. At Arctic Wolf, we are constantly refining our process to provide the best built campers that offer the best towing, and have more luxurious appointments than anyone else in our class.

We are changing the 5th wheel landscape by leveraging our immense buying power, years of Cherokee manufacturing innovation, along with the industry's best design team and production force to create a product that has unparalleled value and sustainable quality.

When you are buying an RV, you are investing in the memories that you will cherish the rest of your life. These moments are too valuable to trust anything less than an Arctic Wolf.

2018 / 2019  
**BEST VALUE**  
FIFTH WHEEL



	245RK4	265DBH8	285DRL4	295QSL8	305ML6	315TBH8
AXLE WEIGHT (LBS.)	6,583	6,631	6,823	7,599	7,038	7,798
HITCH WEIGHT (LBS.)	1,345	1,359	1,452	1,391	1,452	1,520
UNLOADED VEHICLE WEIGHT (LBS.)	7,928	7,990	8,275	8,990	8,490	9,318
CARGO CARRYING CAPACITY (LBS.)	1,972	1,910	1,625	1,930	2,430	1,602
GVWR W/BRAKES (LBS.)	9,900	9,900	9,900	10,920	10,920	10,920
EXTERIOR LENGTH	31'-0"	31'-9"	31'-2"	33'-4"	35'-3"	36'-0"
EXTERIOR HEIGHT W/ AC	12'-5"	12'-5"	12'-5"	12'-5"	12'-5"	12'-5"
EXTERIOR WIDTH	96"	96"	96"	96"	96"	96"
FRESH WATER CAPACITY (GAL)	49 GAL	49 GAL	49 GAL	49 GAL	49 GAL	49 GAL
GREY WATER CAPACITY (GAL)	84 GAL	84 GAL	84 GAL	84 GAL	84 GAL	84 GAL
BLACK WATER CAPACITY (GAL)	42 GAL	42 GAL	42 GAL	42 GAL	42 GAL	84 GAL
AWNING (FT.)	15'-0"	20'-0"	12'-0"	15'-0"	20'-0"	20'-0"

# FREE MEMBERSHIP

to Forest River Owners' Group

www.forestriverfrog.com



## CUSTOMER SATISFACTION



www.ForestRiverBuyLocal.com



### PRE-DELIVERY INSPECTION FACILITY

20,000 square feet of quality assurance. The bare essentials for a premium product. This state-of-the-art facility gives immediate daily feedback to production for quality assurance in every unit built.

## 24/7 EMERGENCY ROADSIDE ASSISTANCE

For a worry-free ownership experience

Forest River includes one

year of Coach-Net RV Technical & Roadside

Assistance with each RV purchase. Whether new to the RV lifestyle or an experienced RV enthusiast, Forest River owners have 24/7 access to technical, operational and emergency road service coverage throughout the US & Canada.

Coach-Net's fast, dependable service is just a phone call away.

# Coach-Net®

RV Technical & Roadside Assistance



## ARCTIC WOLF PACKAGES \*Not available on all models

### Extreme Weather Package

\*Not all items available on all models

- 35,000 BTU Furnace
- Enhanced Fiberglass High Gloss Sidewalls
- Heated & Enclosed Underbelly
- High Circulation Ceiling Fan
- Insulated Upper Deck
- Quick Cool Fantastic Fan
- Racetrack Ducted A/C
- Upgraded Arctic Insulation

### Options

- 2nd 15K Air Conditioner in Bedroom
- Arctic Wolf Swing Arm Bumper and Grill
- Fireplace with 5200btu Heat
- Portable Ice maker
- Large LED TV
- Rear Travel Rack

### Arctic Package

\*Not all items available on all models

- 40" Dinette Drawers\*
- Backup Camera Prep
- Black Out Roller Shades in Main Floor Slides
- Black Tank Flush
- Friction Hinge Entry Door
- Home Entertainment System
- Large Exterior Folding Assist Grab Handle
- Outside Shower with Hot & Cold Water
- Outside TV Bracket with Hookups
- Oversized Pantry\*
- RVQ Quick Connect
- Shower Surround
- Solar Prep & Wiring
- Upper Bunk Windows

### Limited Package

\*Not all items available on all models

- 15K Air Conditioner in Main Living Area with 50amp Service
- 6'4" Slides with Oversized Panoramic Windows
- Aluminum Rims
- Automatic Leveling w/18,000 lbs capacity with NXG Frame
- Comfort Power Master Bed Lift System
- Custom Deluxe Furniture w/ Tri-Fold Sleeper Sofa
- Double Door Residential Refer w/ 1000 watt Power Inverter
- Evergreen Upgraded Mattress
- Fireplace Prep
- Gel Coated High Gloss Fiberglass Front Cap

- LED Interior and Exterior Lighting
- Morryde Cherokee Stable Step with Laser Engraving (Entry Step)
- Morryde Orbit Hitch
- Rear Travel Rack Prep
- Seamless Counter Tops
- Secure Cable Slides
- Stainless Kitchen Suite Appliance Package w/ Farm Style Sink
- Super Kitchen (Extra Lighting, Designer Glass Doors, Luxury Hardware and Accents)
- Tire Pressure Monitoring System
- TV Prep
- USB charging stations (Up to 12 per coach)

FIND OUT MORE AT:

[HTTP://WWW.FORESTRIVERINC.COM/FIFTH-WHEELS/ARCTIC-WOLF](http://www.forestriverinc.com/fifth-wheels/arctic-wolf)

YOUR ARCTIC WOLF DEALER



**Learn More**  
Scan this barcode using a QR Reader on your smart phone to learn more about Forest River.



A Berkshire Hathaway company.

All information contained in this brochure is believed to be accurate at the time of publication. However, during the model year, it may be necessary to make revisions and Forest River, Inc., reserves the right to make all such changes without notice, including prices, colors, materials, equipment and specifications as well as the addition of new models and the discontinuance of models shown in this brochure. Therefore, please consult with your Forest River, Inc., dealer and confirm the existence of any materials, design or specifications that are material to your purchase decision. Litho. U.S.A. FOR 1438 P/W: 2017.11.13

### Specification Definitions

**GVWR (Gross Vehicle Weight Rating)** - is the maximum permissible weight of the unit when fully loaded. It includes all weights, inclusive of all fluids, cargo, optional equipment and accessories. For safety and product performance do NOT exceed the GVWR.

**GAWR (Gross Axle Weight Rating)** - is the maximum permissible weight, including cargo, fluids, optional equipment and accessories that can be safely supported by a combination of all axles.

**UVW (Unloaded Vehicle Weight)\*** - is the typical weight of the unit as manufactured at the factory. It includes all weight at the unit's axle(s) and tongue or pin and LP Gas. The UVW does not include cargo, fresh potable water, additional optional equipment or dealer installed accessories.

\*Estimated average based on standard build optional equipment.

**CCC (Cargo Carrying Capacity)\*\*** - is the amount of weight available for fresh potable water, cargo, additional optional equipment and accessories. CCC is equal to GVWR minus UVW. Available CCC should accommodate fresh potable water

(8.3 lbs per gallon). Before filling the fresh water tank, empty the black and gray tanks to provide for more cargo capacity.

\*\* Estimated average based on standard build optional equipment

Each Forest River RV is weighed at the manufacturing facility prior to shipping. A label identifying the unloaded vehicle weight of the actual unit and the cargo carrying capacity is applied to every Forest River RV prior to leaving our facilities.

The load capacity of your unit is designated by weight, not by volume, so you cannot necessarily use all available space when loading your unit.