

*Luxury*

# *Cardinal*

BY FOREST RIVER



EXQUISITELY CRAFTED AND GRANDLY APPOINTED





3456RLX

SLATE METALLIC PAINT OPTION

SHOWN IN JAVA DECOR





3750BKX

ONYX PAINT OPTION

SHOWN IN JAVA DECOR



CARDINAL  
LUXURY  
FEATURES



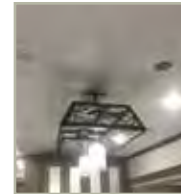
MORRYDE CRE 3000  
SUSPENSION



BUILT IN HOME  
VACUUM SYSTEM



FURRIION CHEF  
COLLECTION OVEN  
AND STOVE



CATHEDRAL  
CEILINGS  
THROUGHOUT



HARDWOOD VALANCES  
WITH GLASS INSERTS



PREPPED  
FOR 3RD AC



THEATER SEAT WITH LIGHT  
AND MASSAGE



BUFFET DINETTE WITH EXTERIOR  
ENTERTAINMENT CENTER



DEXTER NEVER-ADJUST  
BRAKES



FRAMELESS WINDOWS



HUGE 60/40 STAINLESS  
STEEL SINK W/HIGH RISE  
SPRING FAUCET



POWER CORD  
REEL



USB PORTS



FANTASTIC FAN WITH  
RAIN SENSOR -  
KITCHEN & BATHROOM



ROOF SOLAR PANEL PREP



MORRYDE PIN BOX



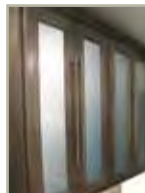
ENERGY MANAGEMENT SYSTEM - CAN RUN  
2 A/C'S ON 30 AMP & 3 A/C'S ON 50 AMP



ONE PIECE FIBERGLASS  
SHOWER



MORRYDE STRUT ASSIST  
ENTRY STEP



SOFT CLOSING  
HIDDEN HINGES



SHAW LINOLEUM  
THROUGHOUT  
& NO CARPET



JENSEN SOUND BAR WITH  
INDEPENDENT ZONE  
CONTROL AND  
APP CONTROL



WATER  
FILTRATION  
SYSTEM



FURRIION OBSERVATION CAMERA  
SYSTEM PREP ON REAR AND  
BOTH SIDES OF UNIT

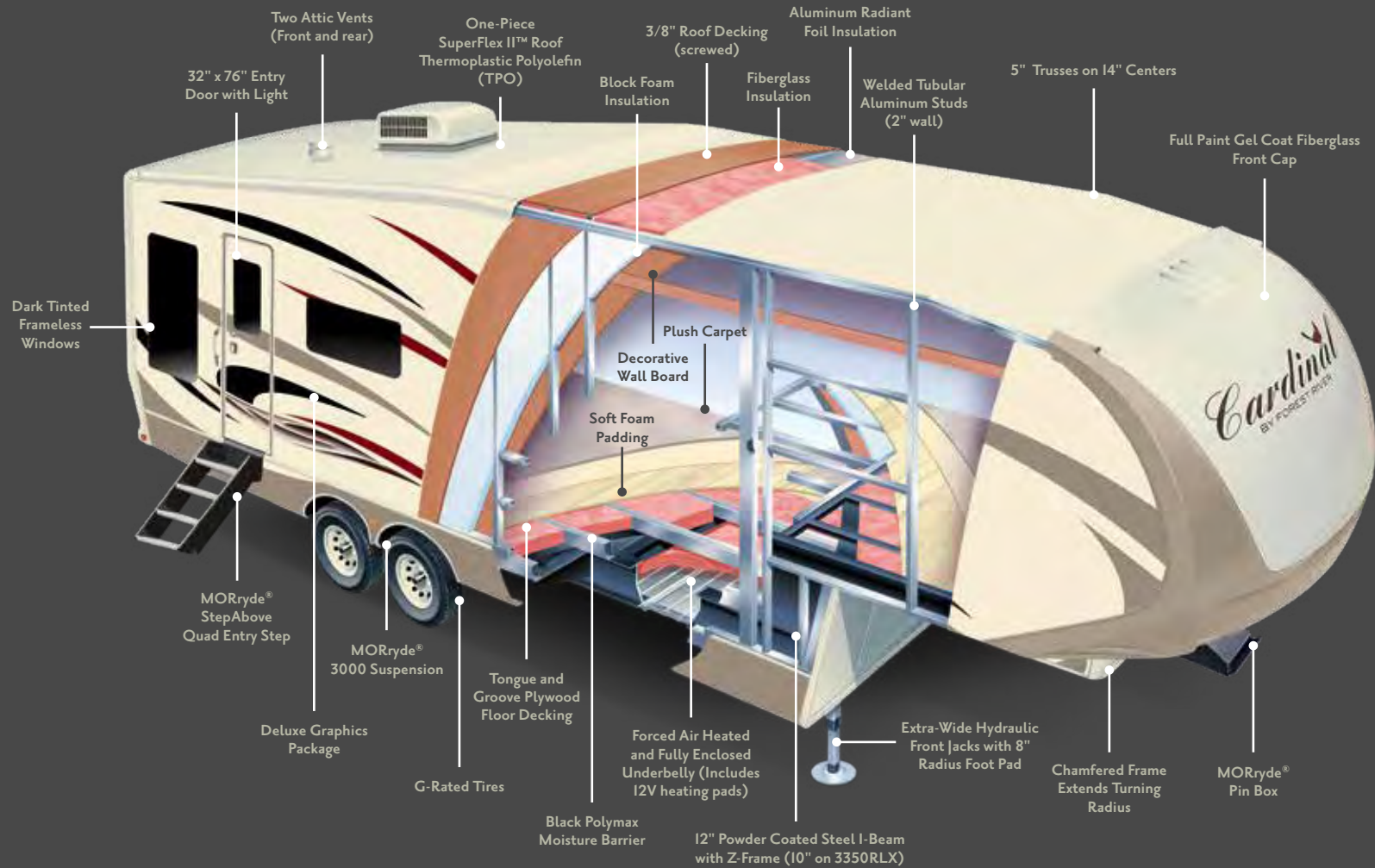


HIDDEN LIFT UP TV  
STORAGE WITH 50"  
TV (MOST MODELS)



TV IN BEDROOM

## WIDE BODY CONSTRUCTION



## STANDARDS & OPTIONS

### STANDARDS

#### INTERIOR

- Crown Molding Cabinet Accents with back lighting
- Crown Molding Ceiling Trim
- Solid Wood (Baltic Birch) Drawer Boxes
- Shaw® Lino Throughout
- Satin Nickel Plumbing Fixtures
- Decorative Solid Wood Frame Entry Door
- Solid Wood Exit Assist Handle
- Built-in Home Vacuum

#### GALLEY

- Dual Bowl "Giant" Stainless Steel Kitchen Sink
- High Rise Single Handle Pull-down Kitchen Faucet
- Fantastic Fan with Rain Sensor
- Flush Floor Galley Slides
- Coat Closet (Where applicable)
- Drawers in Pantry
- Dishwasher Prepped (Most Models)

#### INTERIOR LED LIGHTING

- LED Lighting Throughout
- Indirect LED Lighting
- Decorative Ceiling Light above Dinette
- Pendant Lights in Galley
- Dimmer Switch (Living area only)

#### FURNITURE AND WINDOW COVERINGS

- Three Seat Leather Rear Sofa with Tri-fold Bed
- End Tables with IIO and 2.0 USB Ports
- Theater Seats with LED Light and Massage
- (4) Residential Chairs (2) with Flip-up Storage (2) Folding
- Designer Hard Valance Window Treatments (Where available)

- Designer Soffits with LED Lighting (Where available)
- Solid Wood Window Frame Covering

#### BATHROOM

- Fantastic Fan with Rain Sensor
- Porcelain Toilet with Foot Flush
- Shower Skylight/Dome
- Glass Shower Door
- Adjustable Shower Head
- Medicine Cabinet with Mirrored Door
- Dedicated Heat and A/C Duct

#### BEDROOM

- Denver Mattress
- Designer Bedspread, Pillows and Sham
- Full Height Hanging Wardrobe
- Washer/Dryer Dual Electrical Outlets (Operates Washer/Dryer at same time)
- Chest of Drawers
- Under Bed Storage
- 2 Reading Lights w/Individual Controls
- 2 Bed Side Power Outlets
- Night Stands with 2 USB Ports

#### APPLIANCES

- Stainless Steel Residential Refrigerator with Inverter
- "Shurflo" On-demand High Output Water Pump (3 g/min at 55 psi)
- Dual 30 lb. Propane Bottles with Auto Switch Over
- LP Leak Detector
- Carbon Monoxide Detector

#### ELECTRONICS

- 50" LED TV (Living Area)
- 32" Outside Entertainment
- 32" LED HDTV (bedroom)
- Digital TV Antenna with Signal Booster
- Cable TV Hook-up (All TV's)

#### EXTERIOR

- High-gloss Colored Fiberglass (Premium quality and thickness)
- Front Cap: Molded High-gloss Gel Coat Fiberglass with Extended Turning Radius (Chamfered Front)
- Full Paint Cap with Raised Graphics
- Laminated Front Bulkhead with High Gloss Fiberglass
- Marker Light Camera Prep
- Back-up Monitor Camera Prep
- 32" X 76" Entry and Screen Door
- 45° Enclosed Wrap Skirting

- Slam Latch Insulated Doors with High Gloss Fiberglass
- Laminated Slide End Walls
- Frameless Windows
- Hydraulic Slide Room Power
- Individual Slide Room Selector Switches
- Roof Ladder
- Entry Assist Handle (XL – folding)
- 1.5" Aluminum Belt Rail with Caps (No exposed screws)
- Roto-cast Spun Seamless Water/Waste Tanks
- Enclosed and Heated Underbelly (Forced air heat)
- LED Tail Lights & Rear Running Lights
- LP Quick Disconnect

#### SLIDE ROOM SEAL AND GASKET SYSTEM

- Aluminum "H" Frame Slide Room Perimeter
- Dual Neoprene Squeegee Seals
- Exterior and Interior "D" Seals
- Exterior "H" Seal

#### EXTERIOR LIGHTING

- LED Docking Lights (4 – mounted into front cap)
- Rear Lighting: Red Running/Brake Lights
- Security Lights (2)
- Amber Patio Light
- Entry Door Auto Threshold Light
- LED Awning Lights

#### UTILITY DOCKING COMPARTMENT

- Light (12 Volt)
- Outside Shower (Hot and cold)
- Black Tank Flush System
- Fresh Water Heater Bypass Valve
- Full Coach Water Filtration System
- Winterizing Bypass System
- Protected/Insulated Pull Waste Valves
- Nautilus Control

#### CHASSIS/FOUNDATION

- I-beam "Z" Frame Powder Coated Chassis
- Chamfered Frame Technology
- I2" I-beam Frames (I0" I-beam frame, 3350RLX)
- Dexter® E-Z Lube Bearing Lubrication System and Nev-R-Adjust Brakes
- (8) Lug Hubs

- Spare Tire (Under Frame)
- Hydraulic Front Jacks
- 8" Radius Front Jack Pads
- Electric Rear Stabilizing Jacks
- Pinless Front Jack Legs
- Flush Floor Slide Design w/Steel Ramp and Glide Bar (Main slide rooms)
- Hydraulic Slide System with 2" Steel Rams
- Hydraulic Pump Station with Manual Override
- Electric Cable above Floor Slides (Select Models)

#### CONSTRUCTION

- Roof: 5" Trusses I4" on Centers
- Roof: Alpha Super Flex II TPO Roof Material
- Front Wall: Welded Aluminum Frame
- Rear Wall: Welded Aluminum Frame
- Bath/Bed Deck: Welded Aluminum Frame
- Slide Roof: 2" Welded Aluminum Frame, Vacuum Bonded, Laminated
- Slide Floor: I" Wood Flooring

#### INSULATION

- Sidewalls: High Density Block Foam Insulation (R-9)
- Roof: Fiberglass Batten Insulation and Radiant Foil Insulation (R-38)
- Main Floor: Tongue and Groove Plywood with Batten and Radiant Foil (R-38)
- Sub floor: Honey Combed Polyurethane with Aluminum Radiant Foil Insulation and Direct Forced Air Heat
- Front Cap: Fiberglass Insulation and Radiant Foil Insulation (R-38)

#### ELECTRICAL SYSTEMS

- 70 AMP Converter (Progressive Dynamics)
- 50 AMP Service
- I2 Volt Battery Disconnect
- Battery Prep Box (2)
- Energy Management System (Second and third A/C prep 2 A/C's on 30 AMP)

## OPTIONS

#### INTERIOR

- Winegard Connect 2.0 4G LTE and Wifi Extender
- 18 Cu. Ft. 4-Door Gas/Electric Refrigerator
- Whirlpool Washer and Dryer
- Furion Countertop Dishwasher
- 32" TV in Kitchen (3700FLX)

#### EXTERIOR

- Full-body Paint Package
- 3, 4 or 5 Slide-out Awnings
- Low Profile 13,500 BTU Quiet Cool Ducted A/C in Bedroom
- Third Low Profile 13,500 BTU Quiet Cool Ducted A/C in Living Area
- Heat Pump for 15,000 BTU A/C (Main A/C) (N/A 3700FLX)
- Dual Pane Frameless Windows with Safety Glass
- Generator Prep
- "Level Up" 6-Point One Touch Automatic Hydraulic Leveling System
- Bike Hitch

## PACKAGES

#### EXTENDED SEASONS CAMPING PACKAGE

- I2V Heat Pads with Underbelly Ducted Heat
- 35k BTU Furnace
- 15k BTU whisper quiet A/C
- Prep for 2nd Whisper Quiet A/C
- Exterior Ventilated Attic
- Ceiling Fan
- Electric Fireplace
- Full Pass Through Front Storage with Heat
- Sidewalls: High Density Block Foam Insulation (R-9)
- Roof: Fiberglass and Foil Insulation (R-38)
- Floor: Fiberglass and Foil Insulation

#### ESSENTIALS PACKAGE

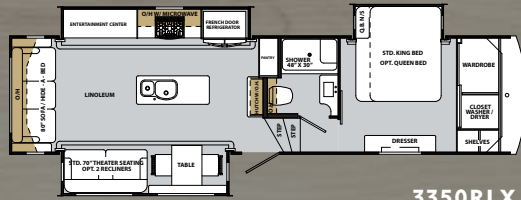
##### \*MANDATORY\*

- Furion RV Chef Collection Oven
- Furion RV Chef Collection Cooktop (Gas)
- Jensen AM/FM/CD/AUX/HDMI/DVD/Bluetooth Stereo with App Control
- Buffet Dinette with Exterior Entertainment Center
- Winegard Wifi/4G Prep

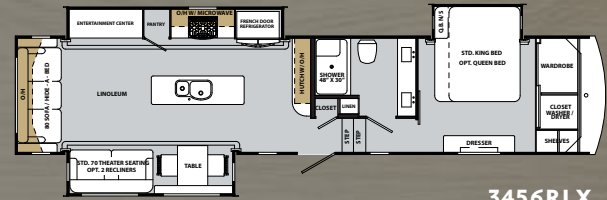
#### CARDINAL LUXURY PACKAGE

- Wide Body Construction
- All Welded Aluminum Structure
- 2" Vacuum Bonded Walls and Slide Boxes
- Tongue and Groove Plywood Main Floor
- 10 Gal. Quick Recover G/E Water Heater
- Mor/Ryde Pin Box
- 7K Dexter Axels with Never Adjust Brakes
- G Rated Tires on I6" Aluminum Rims
- Mor/Ryde 3000 Suspension
- Mor/Ryde Strut Assist Step Above Entry Steps
- Energy Management System
- Residential Roman Shades
- 30" Microwave Oven
- LG Solid Surface Counter Tops Throughout Kitchen
- Stackable Washer/Dryer Prep
- Dual Awnings with LED Lights N/A 3950TZ, 3750BKX
- Soft Close Hidden Hinge Cabinet Doors and Drawers
- Cathedral Ceiling with Crown Molding
- Roof Mounted Solar Panel Prep
- 72" x 80" King Bed with Outlets on Both Sides
- Power Cord Reel
- One Piece Fiberglass Shower with Seat

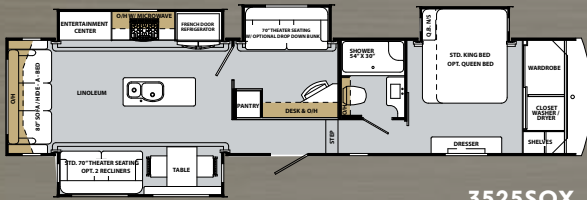
# CARDINAL LUXURY FLOORPLANS



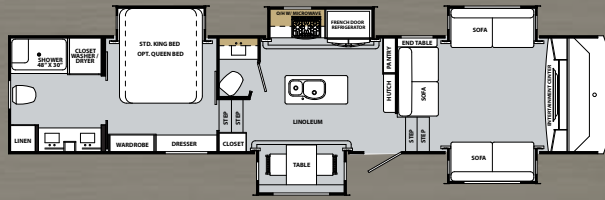
3350RLX



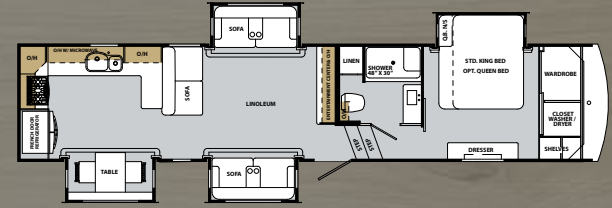
3456RLX



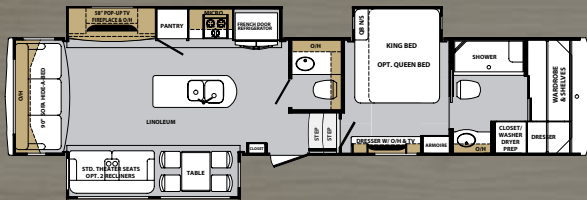
3525SOX



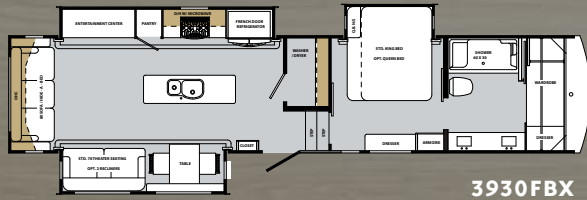
3700FLX



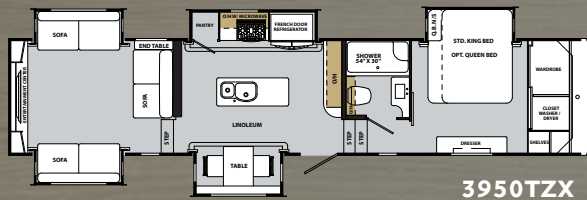
3750BKX



3875FBX



3930FBX



3950TZX

2019 CARDINAL LUXURY	3350RLX	3456RLX	3525SOX	3700FLX	3750BKX	3875FBX	3930FBX	3950TZX
LENGTH (center of pin to rear of back wall)	35' - 2"	40' - 2"	40' - 2"	41' - 4"	40' - 6"	TBD	39' - 11"	40' - 6"
UVW	12085	13307	13624	13856	13540	TBD	13236	14449
HITCH WEIGHT	2216	2264	2343	2340	2385	TBD	2403	2780
GVWR	16215	16264	16343	16340	16385	TBD	16403	16780
CARGO CARRYING CAPACITY	4131	2957	2719	2484	2845	TBD	3167	2331
EXTERIOR HEIGHT	13' 6"	13' 6"	13' 6"	13' 6"	13' 6"	13' 6"	13' 6"	13' 6"
EXTERIOR WIDTH	100"	100"	100"	100"	100"	100"	100"	100"
TIRE SIZE	16"	16"	16"	16"	16"	16"	16"	16"
FRESH WATER	64 GAL.	64 GAL.	64 GAL.	64 GAL.	64 GAL.	TBD	64 GAL.	64 GAL.
WASTE WATER	110 GAL.	120 GAL.	120 GAL.	120 GAL.	120 GAL.	TBD	120 GAL.	120 GAL.
PATIO AWNING	14' and 11'	19' and 11'	18' and 11'	16' and 6'	16'	TBD	18' and 11'	16'



**PRE-DELIVERY INSPECTION FACILITY**  
 20,000 square feet of quality assurance. The bare essentials for a premium product. This state-of-the-art facility gives immediate daily feedback to production for quality assurance in every unit built.



[www.ForestRiverBuyLocal.com](http://www.ForestRiverBuyLocal.com)

**24/7 EMERGENCY  
 ROADSIDE ASSISTANCE  
 WITH VEHICLE PURCHASE\***

TOWING	WINCH-OUT
JUMP-STARTS	MOBILE MECHANIC
TIRE CHANGES	TECHNICAL
FLUID DELIVERY	SUPPORT
LOCKOUT SERVICE	DEALER LOCATOR SERVICES

**SAFERIDERV**  
 MOTOR CLUB

\*VALID FOR 1 YEAR FROM DATE OF PURCHASE

**FREE MEMBERSHIP**  
 to Forest River Owners' Group

[www.forestriverfrog.com](http://www.forestriverfrog.com)

GVWR (Gross Vehicle Weight Rating) - is the maximum permissible weight of the unit when fully loaded. It includes all weights, inclusive of all fluids, cargo, optional equipment and accessories. For safety and product performance do NOT exceed the GVWR.

GAWR (Gross Axle Weight Rating) - is the maximum permissible weight, including cargo, fluids, optional equipment and accessories that can be safely supported by a combination of all axles.

UVW (Unloaded Vehicle Weight)\* - is the typical weight of the unit as manufactured at the factory. It includes all weight at the unit's axle(s) and tongue or pin and LP Gas. The UVW does not include cargo, fresh potable water, additional optional equipment or dealer installed accessories.

\*Estimated Average based on standard build optional equipment.

CCC (Cargo Carrying Capacity)\*\* - is the amount of weight available for fresh potable water, cargo, additional optional equipment and accessories. CCC is equal to GVWR minus UVW. Available CCC should accommodate fresh potable water (8.3 lbs per gallon). Before filling the fresh water tank, empty the black and gray tanks to provide for more cargo capacity.

\*\* Estimated average based on standard build optional equipment

Each Forest River RV is weighed at the manufacturing facility prior to shipping. A label identifying the unloaded vehicle weight of the actual unit and the cargo carrying capacity is applied to every Forest River RV prior to leaving our facilities.

The load capacity of your unit is designated by weight, not by volume, so you cannot necessarily use all available space when loading your unit.

All information contained in this brochure is believed to be accurate at the time of publication. However, during the model year, it may be necessary to make revisions and Forest River, Inc., reserves the right to make all such changes without notice, including prices, colors, materials, equipment and specifications as well as the addition of new models and the discontinuance of models shown in this brochure. Therefore, please consult with your Forest River dealer and confirm the existence of any materials, design or specifications that are material to your purchase decision.



STANDARD EXTERIOR

MISTY GARNET

ONYX

SLATE METALLIC



**Learn More**  
 Scan this barcode using a QR Reader on your smart phone to learn more about Forest River.



A Berkshire Hathaway company.

**CARDINAL**  
 3603 S. Nappanee St, Elkhart, IN 46517  
 (574) 296-7700  
[www.forestriverinc.com/Cardinal](http://www.forestriverinc.com/Cardinal)  
[www.forestriveraccessories.com](http://www.forestriveraccessories.com)

**YOUR LOCAL CARDINAL DEALER**