

CEDAR CREEK SILVERBACK EXTENDED STAY FIFTH WHEELS



Cedar Creek

SILVERBACK EDITION



**EXTENDED STAY
APPROVED**

The Smart Choice for the Experienced RV'er



Cedar Creek

SILVERBACK EDITION

THE SILVERBACK ADVANTAGE

Travel without leaving behind the comforts and conveniences of home with Silverback extended stay fifth wheels. Spacious floorplans, name brand appliances, residential furniture with lifetime warranties, and solid construction provides the safety and security experienced RV enthusiasts expect from Cedar Creek. Wherever the road leads, whether full-timing or weekending, Silverback enhances peace of mind for life's great adventures.



The popular 311k rear living room offers plenty of open living space for family and friends. The Franklin™ hide-a-bed sofa converts to an additional sleeping area for guests. Large landscape view windows let in plenty of light and fresh air.



311K



SILVERBACK EDITION PACKAGE

(Mandatory Features)

- "True" Pearl Gelcoat Exterior – truly the best of the best in gelcoat exteriors. Stronger, thicker, and maintains its high gloss longer than our competitor's less expensive gel-coated exteriors
- Cedar Creek's famous, all aluminum super structure with radius wrap metal skirt
- Z-Frame
- IN-Command operations control system with smart phone remote app
- Jensen® 50" LED TV with swing arm in living room
- Jensen® 12 volt CD/DVD, AM/FM, Bluetooth, MP3/USB stereo system with smart control app and two outside speakers
- Satellite prep
- King WiFiMax campground WiFi extender
- Pre-wired for optional safety and security cameras (One or three)
- High sheen, European Beech cabinet doors
- Redesigned slide fascia in living room, kitchen, and bedroom
- Deluxe blackout roller shades
- 36" Electric fireplace
- Ceiling fan
- Congoleum® Carefree, Designer Series flooring throughout (Except dining slide)
- Shaw® carpeting on dining slide
- Franklin™ sofa and La-Z-Boy® recliners (Where applicable)
- Franklin™ power theater seating (Standard 31IK, 37RTH, 37FLK only)
- Central vacuum system with automatic dustpan and front storage compartment vacuum port
- Furrion® Chef's Kitchen with gas cooktop
- Upgraded kitchen and shower faucets
- Self-closing drawer guides
- 20" Glass door pantry (33IK, 37MBH, 37FLK, 37RTH)
- 18 Cu. Ft. stainless steel, electric refrigerator with dedicated 1000 watt inverter (N/A 29IK, 37FLK, 37RTH)
- Freestanding table with leaf extension and four chairs (Two folding)
- Denver® 8" queen mattress
- Jensen® 32" LED TV in bedroom
- MORryde® Step Above entry steps
- Two full panel backsplashes (Where applicable)
- 100% Automotive frameless windows
- Door side cold water port
- 50 Amp cord reel
- Heated front storage compartment
- Quick disconnect LP gas line



31IK

All spacious slide out master bedrooms come standard with a 32" LED TV, Denver Mattress queen bed, residential bedspread and matching pillow shams. A king bed is available as an option.



Silverback's luxurious bath includes a large 48" shower with seat and glass doors, porcelain toilet, and a Create-a-Breeze fan.

SEATING OPTIONS

GRAPHITE

ALMOND

CASHMERE

SEATING OPTIONS Silverback premium furnishings are American made and include a limited lifetime warranty.



L A Z B O Y

RECLINERS

Live life comfortably with our standard La-Z-Boy® recliners. Choose Graphite, Almond or Cashmere for residential comfort that lasts.



FRANKLIN CORPORATION

THEATER SEATS

Optional Franklin™ residential power theater seating features exclusive "Wow" gel injected foam and premium springs for the ultimate in comfort. Graphite, Almond or Cashmere.



DÉCOR SAPPHIRE MOON

PEPPERCORN

CHESTNUT





Cold room tested to 0°F with standard insulation and heating pads.

CEDAR CREEK'S FAMOUS ALL ALUMINUM SUPER-STRUCTURE FOR YEARS OF CAREFREE CAMPING

ROOF - R-VALUE (R-40)*

- Full length 3/8" wood roof decking for a full walk-on roof
- Triple layer insulation
- Aluminum Truss Rafters on 16" centers with 8" wide circular air duct. Circular ducting combined with our high performance (bigger compressor) air conditioner gives Cedar Creek a 30% increase in air conditioning performance over our competitors in hotter climates
- Optional second Whisper Quiet roof mount air conditioner (Bedroom)
- Two ply – Tuff Ply rubber roof membrane
- Roof is bolted to sidewall with 5/16" x 3-1/2" carriage bolts
- Radiant shield insulation extends around to the bottom of the front cap – R Value 40, 97% reflectivity, 3% emission
- Attic Vent

FLOORS & UNDERBELLY - R-VALUE (R-45)*

- 3" Aluminum frame floor with in-floor heat ducting and radius "L" brackets combined with 3M® Silaprene adhesives
- 5/8" Tongue and groove plywood floor is attached to the aluminum frame with Silaprene and screwed every 6"
- Fully enclosed 4' x 8' ABS removable panels for easier access into the underbelly. We use wood stringers to attach with no holes in the frame
- Triple layer insulation enhances the protective values of plywood, vinyl, carpet, carpet pads, tank heaters, etc.
- 12 Volt tank heaters on all tanks
- Radiant shield insulation – 97% reflectivity, 3% emission
- Water lines are protected inside the floor and away from exterior walls

2" THICK SIDE WALLS - R-VALUE (R-11)*

- Handmade 2" x 2" - 16" (or less) on center sidewalls with individually fastened custom "L" brackets combined with 3M® Silaprene adhesives for a stronger frame without welding or lamination. (475 PSI at 2" per minute)
- "True" High Gloss Classic Gelcoat on all exteriors - the best of the best in fiberglass. Don't accept "hi-gloss fiberglass" or "gel-coated" sidewalls - only true gelcoat stands the test of time.
- 3M® Silaprene Bonded Sidewalls – resilient, grows stronger with age. Also has outstanding resistance to UV, heat, cold, moisture, oils, gasoline, highway chemicals, and creates a bond that cannot delaminate with time
- Sidewalls are bolted to the floor with 5/16" x 6-1/2" carriage bolts at each outrigger
- Glued R-7 fiberglass insulation expanded to its full capacity within the sidewall frame
- Slide rooms insulated on all five sides

*Equivalent R-Value

Check out our construction video at www.forestriverinc.com/silverback.



Aluminum studded sidewalls and roof trusses on 16" centers or less.



Residential, glasswool insulation designed by nature.



R-38 Radiant shield Thermo-foil wrap through ceilings, underbellies and under front cap.



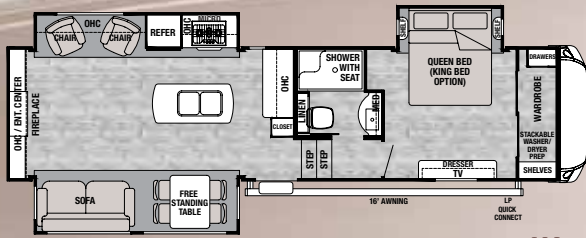
Thick Silaprene super adhesive (475 PSI) guarantees solid contact between the True bonded gelcoat and aluminum frame without lamination



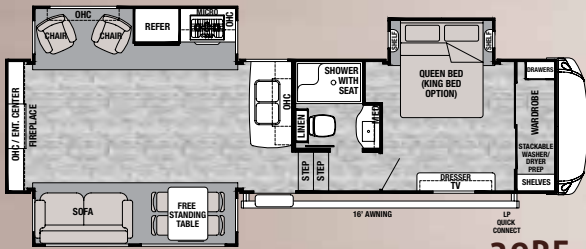
2" x 3" Aluminum floor studs

Cedar Creek

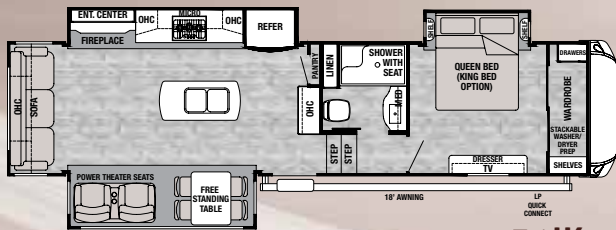
SILVERBACK EDITION



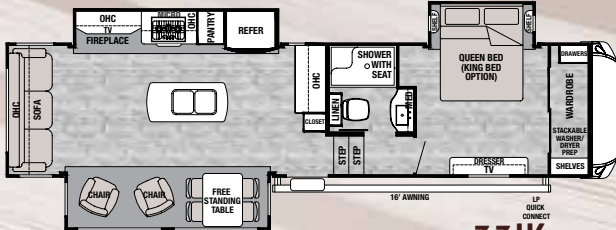
291K



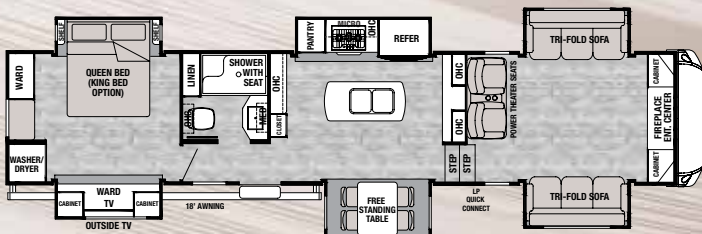
29RE



311K



331K



37FLK

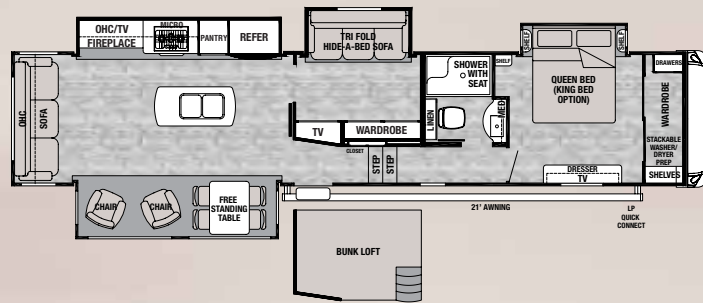


Cedar Creek's **37RTH** features a spacious rear garage that offers plenty of room for gear and toys. Stay outside where the action is with a convenient outdoor refrigerator and 32" television. When the garage is fully extended it measures 110" D x 61" W x 84" H.

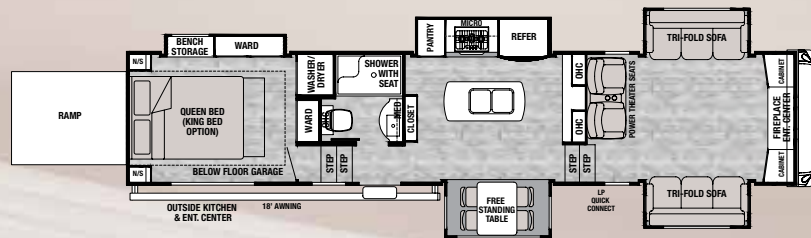


Silverback's Z-frame, heated front storage compartment provides over

100 cu. ft. of storage and includes an extra vacuum port for outside clean-ups.



37MBH



37RTH

GVWR (Gross Vehicle Weight Rating) - is the maximum permissible weight of the unit when fully loaded. It includes all weights, inclusive of all fluids, cargo, optional equipment and accessories. For safety and product performance do NOT exceed the GVWR.

GAWR (Gross Axle Weight Rating) - is the maximum permissible weight, including cargo, fluids, optional equipment and accessories that can be safely supported by a combination of all axles.

UVW (Unloaded Vehicle Weight)* - is the typical weight of the unit as manufactured at the factory. It includes all weight at the unit's axle(s) and tongue or pin and LP Gas. The UVW does not include cargo, fresh potable water, additional optional equipment or dealer installed accessories.

*Estimated Average based on standard build optional equipment.

CCC (Cargo Carrying Capacity)** - is the amount of weight available for fresh potable water, cargo, additional optional equipment and accessories. CCC is equal to GVWR minus UVW. Available CCC should accommodate fresh potable water (8.3 lbs per gallon). Before filling the fresh water tank, empty the black and gray tanks to provide for more cargo capacity.

**Estimated average based on standard build optional equipment.

Each Forest River RV is weighed at the manufacturing facility prior to shipping. A label identifying the unloaded vehicle weight of the actual unit and the cargo carrying capacity is applied to every Forest River RV prior to leaving our facilities. The load capacity of your unit is designated by weight, not by volume, so you cannot necessarily use all available space when loading your unit.

MODEL	291K	29RE	311K	331K	37FLK	37MBH	37RTH
GVWR	13965 lb.	13985 lb.	14435 lb.	14067 lb.	16764 lb.	16135 lb.	18000 lb.
Hitch Weight	1965 lb.	1985 lb.	2435 lb.	2067 lb.	2764 lb.	2135 lb.	3176 lb.
UVW	10689 lb.	10705 lb.	11244 lb.	10880 lb.	13484 lb.	12679 lb.	14190 lb.
CCC	3335 lb.	3280 lb.	3191 lb.	3187 lb.	3280 lb.	3456 lb.	3810 lb.
Exterior Length	34' 9"	34' 9"	36'	36' 11"	41' 1"	42' 2"	41' 1"
Exterior Height	13' 5"	13' 5"	13' 5"	13' 5"	13' 5"	13' 5"	13' 5"
Exterior Width	96"	96"	96"	96"	96"	96"	96"
On Demand Fresh Water	69 gal.	69 gal.	69 gal.	69 gal.	69 gal.	69 gal.	69 gal.
Gray Water	80 gal.	80 gal.	80 gal.	80 gal.	80 gal.	80 gal.	80 gal.
Black Water	40 gal.	40 gal.	40 gal.	40 gal.	40 gal.	40 gal.	40 gal.
Awning Size	16 ft.	16 ft.	16 ft.	16 ft.	18 ft.	21 ft.	18 ft.

(3 axles)



The standard KING Wi-FiMAX WiFi router/range extender creates your own personal, private and secure WiFi network, just like at home. It can be configured to connect to available networks and devices with password access.



The iN-Command® Control System is a central hub for RV operations. Control and monitor many systems via the panel or smart phone app.



Another feature that we've taken from residential construction

is our super quiet "HP" (High performance) 15,000 BTU air conditioning system, which includes a larger compressor and cold air returns! This means 30% more air is being forced into the coach than a standard 15,000 air conditioner.

All Silverback fifth wheels are now prewired for an optional Furrion rear wireless camera or three camera security system, with voice activation and night vision. These back-up and security systems utilize wireless digital technology for a clearer view and enhanced safety.



This single handle, pull-out faucet with sprayer makes clean up quick and easy.

SILVERBACK EDITION PACKAGE

(Mandatory Features)

- "True" Pearl Gelcoat Exterior – truly the best of the best in gelcoat exteriors. Stronger, thicker, and maintains its high gloss longer than our competitor's less expensive gel-coated exteriors
- Cedar Creek's famous, all aluminum super-structure with radius wrap metal skirt
- Z-Frame
- IN-Command operations control system with smart phone remote app
- Jensen® 50" LED TV with swing arm in living room
- Jensen® 12V CD/DVD, AM/FM, Bluetooth, MP3/USB stereo system with smart control app and 2 outside speakers
- Satellite prep
- King Wi-FiMax campground WiFi extender
- Pre-wired for optional safety and security cameras
- High sheen, European Beech cabinet doors
- Redesigned slide fascia in living room, kitchen, and bedroom
- Deluxe blackout roller shades
- 36" Electric fireplace
- Ceiling fan
- Congoleum® Carefree, Designer Series flooring throughout (Except dining slide)
- Shaw® carpeting on dining slide
- Franklin™ sofa and La-Z-Boy® recliners (Where applicable)
- Central vacuum system with automatic dustpan and front storage compartment vacuum port
- Furrion® Chef's Kitchen with gas cooktop
- Full panel backsplash
- Upgraded kitchen and shower faucets
- Self-closing drawer guides
- 20" Glass door pantry (33IK, 37MBH, 37FLK, 37RTH)
- 18 Cu. ft. stainless steel, electric only, refrigerator with 1000 watt inverter (N/A 29IK)
- Freestanding table with leaf extension and four chairs (two folding)
- Denver® 8" queen mattress
- Jensen® 32" LED TV in bedroom
- MORryde® Step Above entry steps
- 100% Automotive frameless windows
- Door side cold water port
- 50 Amp cord reel
- Heated front storage compartment
- Quick disconnect LP gas line

STANDARD FEATURES

- Dexter® Safety and Performance Package
 - Dexter® axles/brakes/suspension performance package
 - Dexter® E-Z Flex® rubber equalization system with bronze bushings and six greased zerks per side
 - Dexter® E-Z Lube® hubs
 - Dexter® Nev-R-Adjust® brakes
- 16" ST tires and aluminum rims
- 30" Over the range microwave with outside venting
- Black tank flush
- Bathroom Breeze power fan with wall switch in the bathroom
- Front hydraulic landing legs
- Cedar Creek switch control center
- Prepped for Furrion rear wireless camera, or 3 camera security system
- "Quite Zone" ducted 15,000 "HP" (High performance), air conditioner with circular motion ductwork and cold air returns. The larger compressor on this AC pushes 30% more air into the coach.
- Attic vents
- Braced and wired for second air conditioner
- Enclosed and insulated underbelly with 12V heating pads on all holding tanks
- Solid wood slide room fascia in living room – Try the tap test...
- 5/8" Tongue and groove plywood floor
- Braced for optional "Level-Up" 6-point hydraulic level system
- LED tail lights and lower front lights
- Locked docking station with water heater by-pass, slide room controls, outside shower, satellite and cable hook-ups, 12 Volt battery disconnect, city and fresh water fills, and easy to use tank handles
- 12 Gallon gas/electric DSI water heater
- Create-A-Breeze Fantastic fan with rain sensor in kitchen
- LED lighting fixtures throughout
- Digital thermostat for heat and air
- 48" Shower with seat and glass doors
- Porcelain toilet with top swirl flush
- Franklin™ trifold Comfort Sleep sofa (37MBH Only)



OPTIONS

- "Level-Up" 6-point hydraulic level system
- "Quiet Zone" ducted Penguin 15,000 BTU roof mount second air conditioner
- Create-a-Breeze fan with rain sensor and thermostat in the bedroom IPO vent (N/A second AC option)
- Shaw® carpeting with rebond pad in living room
- Shaw® carpeting with rebond pad in bedroom
- Power Franklin® theater seating (Standard 31IK, 37RTH, 37FLK)
- Booth dinette table IPO free standing table and chairs
- Denver® mattress 8" king bed
- "Champagne Dreamer" 10" luxury queen mattress
- "Champagne Dreamer" 10" luxury king mattress
- 8 Cu. ft. gas/electric refrigerator with solid glazed wood door front (29RE)
- 18 Cu. ft. stainless steel, gas/electric refrigerator (N/A 29RE, 29IK)
- 20 Cu. ft. stainless steel, electric refrigerator with double drawer freezers and 1000 watt dedicated inverter (Standard on 37FLK, 37RTH) (N/A 29IK, 29RE)
- Washer/dryer prep
- Splendide stackable washer/dryer
- Cedar Creek Outdoor Party Center
- Dual pane windows
- 1-1/4" Bike rack hitch receiver
- Furrion rear camera – mounted
- Furrion wireless rear camera and two side cameras for safety and security – mounted
- Awning toppers
- Solar prep
- 200W Solar panel
- Roof mounted King® Satellite
- Matching Chottoman with interior storage
- Generator prep
- 5.5 Marquis Gold LP generator
- Full body paint

CEDAR CREEK OUTDOOR PARTY CENTER

This new party slide is only 20" wide, and tucks nicely into any fifth wheel front storage compartment. It packs a whopping punch with a 50" hidden TV on a double lift, a fold-up countertop with hidden storage, a 110V mini refrigerator and a suburban gas griddle on a steel slide out tray. (N/A 37FLK, 37RTH, 38FLX)





37MBH

The 37MBH features a second bedroom with a tri-fold sleeper sofa, and a residential, sliding barn door. The versatile upper loft can be used as an private sleeping area for kids, or attic storage space.

For information on Cedar Creek Silverback floorplans, visit www.forestriverinc.com/silverback. Take a look at our Matterport 360° tours and see why Cedar Creek is the smart choice for the experienced RV'er.

Cedar Creek
SILVERBACK EDITION

THE SMART CHOICE FOR THE EXPERIENCED RV'ER
Forest River Inc. ■ Cedar Creek division
501 Hawpatch Road ■ Topeka, IN 46571 ■ Phone: 260-593-2404
Parts & Service Phone: 260-593-4000
On The Web at: www.forestriverinc.com/silverback

INTERACTIVE MOBILE MANUALS

Download our Forest River mobile app or visit our dynamic online manual to enhance your ownership experience. These interactive options provide incredible ease and insight into use, maintenance and enjoyment of your Forest River product. Ranging from "How-To" videos, pictures and illustrations of various components, systems and features, to fully searchable content and downloadable PDFs for individual component owner's manuals, answers are always just a click away.



All information contained in this brochure is believed to be accurate at the time of publication. However, during the model year, it may be necessary to make revisions and Forest River, Inc., reserves the right to make all such changes without notice, including prices, colors, materials, equipment and specifications as well as the addition of new models and the discontinuance of models shown in this brochure. Therefore, please consult with your Forest River dealer and confirm the existence of any materials, design or specifications that are material to your purchase decision. ©2018 Cedar Creek. A division of Forest River, Inc., a Berkshire Hathaway Company. 11 /18 Silverback



PRE-DELIVERY INSPECTION FACILITY


20,000 square feet of quality assurance. The bare essentials for a premium product. This state-of-the-art facility gives immediate daily feedback to production for quality assurance in every unit built.

**24/7 EMERGENCY
ROADSIDE ASSISTANCE
WITH VEHICLE PURCHASE***


<p>TOWING JUMP-STARTS TIRE CHANGES FLUID DELIVERY LOCKOUT SERVICE</p>	<p>WINCH-OUT MOBILE MECHANIC TECHNICAL SUPPORT DEALER LOCATOR SERVICES</p>
---	--



*VALID FOR 1 YEAR FROM DATE OF PURCHASE



Learn More
Scan this barcode using a QR Reader on your smart phone to learn more about Forest River.



A Berkshire Hathaway company.

CUSTOMER SATISFACTION

FOREST RIVER
encourages you to
BUY LOCAL

PREFERRED SERVICE PRODUCT INFORMATION

www.ForestRiverBuyLocal.com

FREE MEMBERSHIP
to Forest River Owners' Group

www.forestriverfrog.com

YOUR CEDAR CREEK SILVERBACK DEALER