

SALEM



# SALEM

BY FOREST RIVER

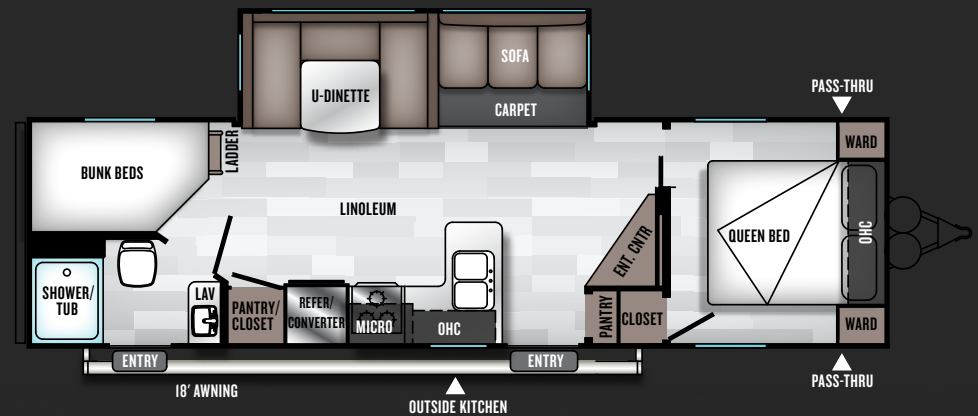




# 26DBUD

SHOWN WITH CUSTOMER-SUPPLIED TV | INTERIOR: MARBLE

The 26DBUD was designed based on the growing demand for a family friendly model with sufficient storage. This model offers two pantries, walk-in closet in bedroom and exclusive 14 .4 cu ft of STOW & GO storage. Providing not only sufficient but, plenty of storage.







### **Organization matters.**

With new compartmentalized storage solutions in the bedroom, organizing clothes and camping goods will be a snap. And as always, a separate shoe-kick keeps them out of the way.

**OTHER BRANDS**



### **Refrigerators matter.**

Our massive 10.7 cu. ft. fridge is almost double the size of a traditional RV refer, has glass shelves instead of wire racks, and is perfect for both dry camping, and plug-in.

**OTHER BRANDS**



**SALEM**

### **Storage matters.**

Salem hosts tremendous storage and solutions, which are sure to accommodate even the largest families.

**OTHER BRANDS**



**SALEM**

**SALEM**



**9" THICK**

**SALEM**



**OTHER BRANDS**

### **Mattresses matter.**

Our Denver @ pillow-top mattress is truly one-of-kind. We understand the importance of a great night's sleep. Saving money, doesn't have to be uncomfortable!



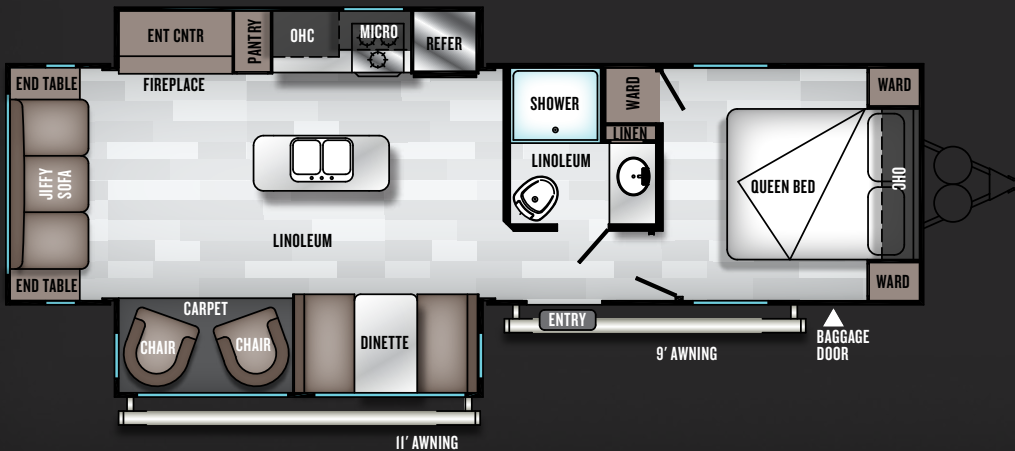


# 27RE

SHOWN WITH CUSTOMER-SUPPLIED TV,  
 OPTIONAL TABLE & CHAIRS  
 INTERIOR: OYSTER

## Your Dream Escape.

Time to completely unwind, and relax in this beautiful couple's coach. Everything from massive patio windows, comfortable TV viewing at almost every location, and a perfect separation of eating areas and family entertainment, this unit will leave you wanting for nothing.



# Exteriors matter.



**SALEM**

## Tuff-Coat matters.

Our Tuff-Coat siding not only offers the same benefits as traditional gloss siding, it adds the benefit of being harder to scratch and dent. Your trailer will look good for years to come.

**OTHER BRANDS**



**SALEM**



**OTHER BRANDS**

## Stairs matter.

Entering your coach should be safe and easy. Our triple step system is unparalleled for safety and convenience.

## Anti-sway matters.

JT-Strong Arms - Typically reserved for high-end fifth wheels, will make your trailer feel like it is sitting on a house foundation...Rock Solid Setup - Every time.



**OTHER BRANDS**



**SALEM**



**SALEM**



**OTHER BRANDS**

## Power features matters.

Our Power Awning with LED Strip light and Power Tongue Jacks make camping much easier.





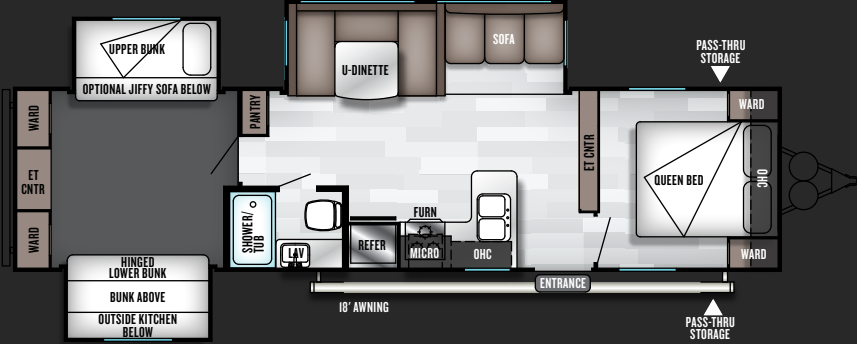
6 SHOWN WITH CUSTOMER-SUPPLIED TV

31KQBTs

SHOWN IN MARBLE



# 31KQBTS



## The Family Getaway.

Nothing is lacking in this trailer. It includes a beautiful outside kitchen, quad bunks, massive bunk room for total comfort even on those less-than-desirable days, and a master bedroom that just begs for you to stop in and unwind.







LED Lights

16 x 24 Residential Style Cabinets with Glass Inserts and Base Shelves (Where applicable)

80" CEILING HEIGHT

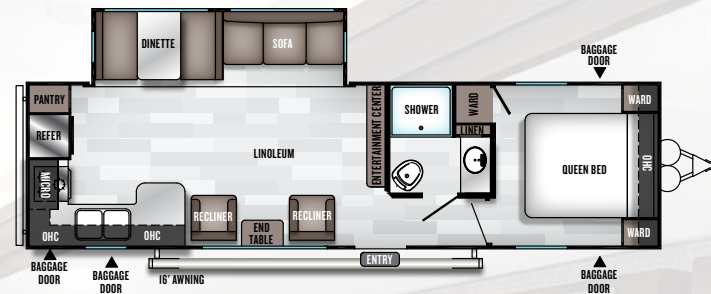
10.7 cu ft. Stainless Steel Refrigerator

LG® Solid Surface Countertops

Thomas Payne Collection Recliners

Shaw® Linoleum Scratch, Tear, and Cold, Crack Resistant Flooring

Stow and Go Storage Under Jiffy Sofa



27RKS PICTURED

Modern Roller Shades With "Blackout" Privacy

# INTERIOR FEATURES

SOME FEATURES SHOWN HAVE LIMITED AVAILABILITY.

27RKS PICTURED WITH OPTIONAL TABLE & CHAIRS





1



2



3



4



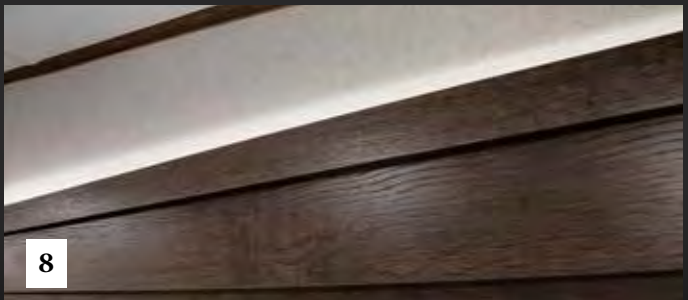
5



6



7



8

SALEM

# POPULAR FEATURES

MORE REASONS WHY PEOPLE CHOOSE SALEM

1. Full Extension Ball Bearing Drawer Guides
2. High Rise Spring Faucet
3. NEW Deluxe Entertainment Center with Standard 30" Fireplace, Shoe Nook (Most Models)  
(Shown with customer supplied TV)
4. Large 10.7 cu. ft. Everchill refrigerator with magnetic door holder.
5. Bluetooth Soundbar Stereo with Remote and HDMI Passthrough
6. Extra Large Pass-Through Storage
7. LG® Solid Surface Countertops (Limited Time Options\*)
8. Over Slide LED Accent Lighting (Limited Time Options\*)

\* See your dealer for more details about our Limited Time Options

# DETAILS MATTER.

WHERE AFFORDABILITY AND LUXURY COLLIDE.



SALEM

## Windows matter.

Panoramic windows create an atmosphere of comfort. Most trailers are dark and uncomfortable, but Salem invested in much larger windows, so you can feel right at home - or better!



OTHER BRANDS



SALEM

## Comfort matters.

Coleman Brand Air Conditioners are the leaders in quiet, and efficient systems. No more yelling over the noise. Enjoy comfort and quiet with Coleman.



OTHER BRANDS



SALEM



OTHER BRANDS

## Closets matter.

How often do you see a full closet in a master bedroom, along with tremendous additional Stow and Gow Storage? (Varies by Floorplan)



SALEM



OTHER BRANDS

## Convenience matters.

Even the smallest things, such as USB Ports, can add a bit of "home" back into your camping trip!



SALEM

## Fireplaces matter.

Our 30" Built in Fireplace with Crystals is not only functional, but with several color options, it is a stunning addition to your luxury "getaway."



OTHER BRANDS





## CONSTRUCTION BUILT TO LAST.

- 1 2" x 3" floor joists 12" on center
- 2 2" wall studs 16" or less on center
- 3 30" fiberglass radius entry door
- 4 Aluminum siding with Tuff-Coat
- 5 5" bowed truss roof rafters
- 6 One piece seamless roof  
(12 yr. manufacturer defect warranty)
- 7 R-7 fiberglass insulation throughout
- 8 Extra large full pass-thru storage
- 9 Smooth rolled skirting
- 10 In floor ducted heat
- 11 Diamond plate rockguard
- 12 3/8" roof decking (full walk-on roof)
- 13 LP bottle cover w/ easy access
- 14 13.5K ducted roof, high output AC w/ quick cool
- 15 Stain resistant carpet
- 16 One piece linoleum flooring
- 17 Safety glass windows
- 18 A/C ducts
- 19 "Darco" anti-puncture underbelly wrap
- 20 5/8" Tongue and Groove Plywood Floor Decking



## FUNCTIONAL, QUALITY STANDARDS

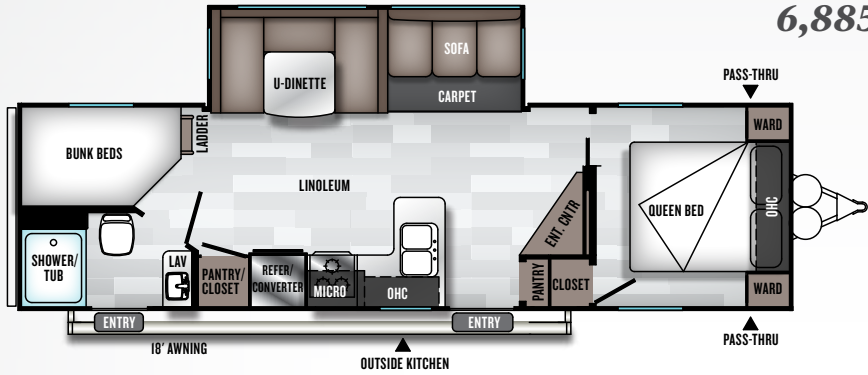
At Salem your satisfaction is serious business and it shows. Our commitment to your satisfaction includes:

A: 5/8" Tongue and Groove Plywood Flooring System

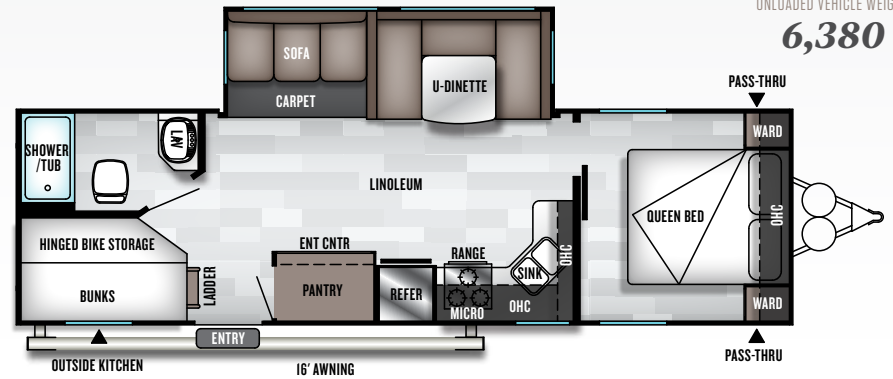
B: 6 gallon GE DSI water heater with Quick Recovery

C: Central Switch Command Center

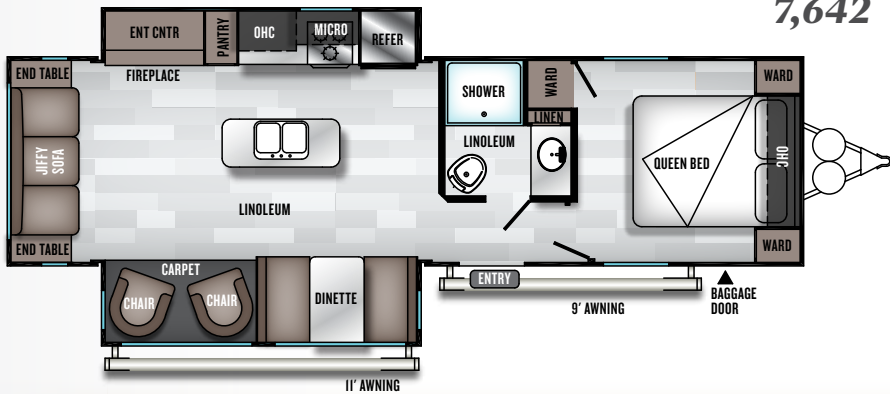
**26DBUD**  
UNLOADED VEHICLE WEIGHT:  
**6,885**



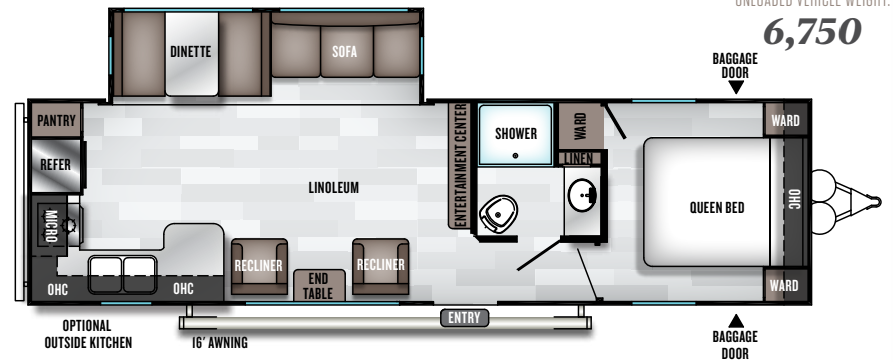
**27DBK**  
UNLOADED VEHICLE WEIGHT:  
**6,380**



**27RE**  
UNLOADED VEHICLE WEIGHT:  
**7,642**



**27RKS**  
UNLOADED VEHICLE WEIGHT:  
**6,750**

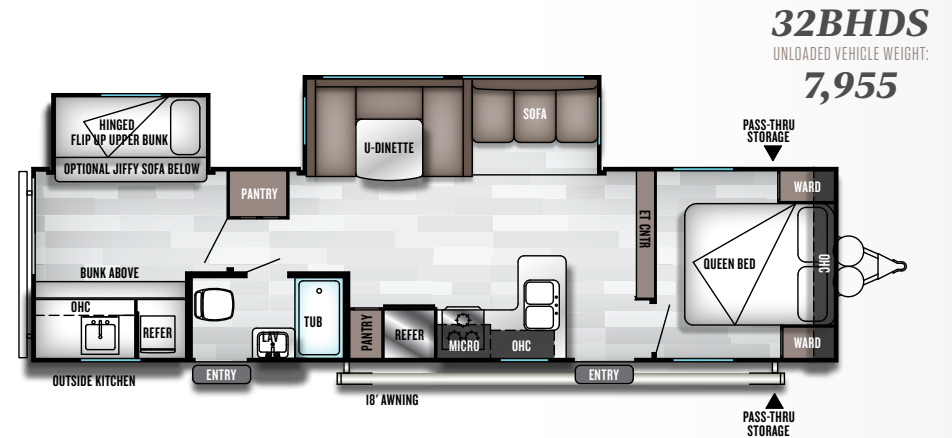
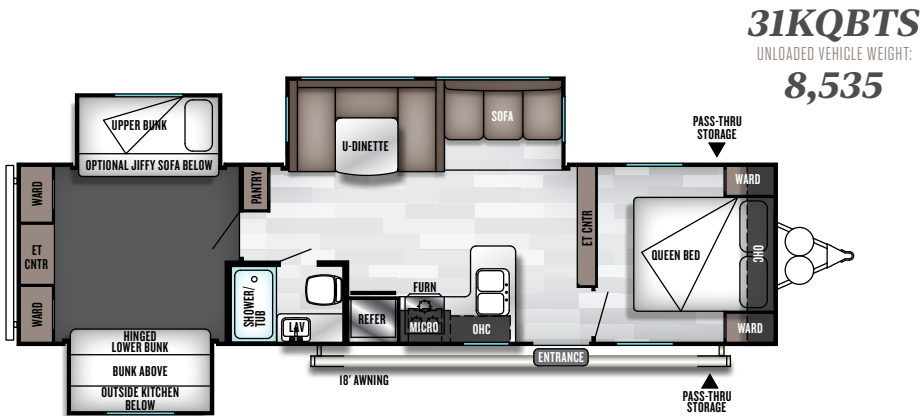
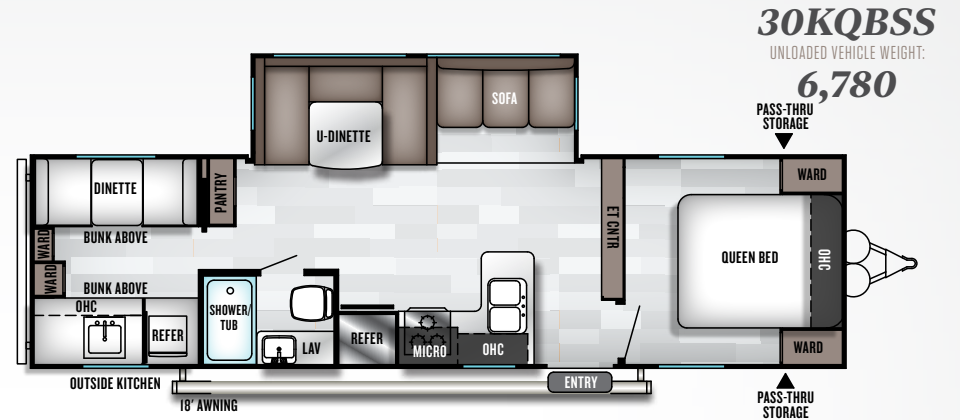
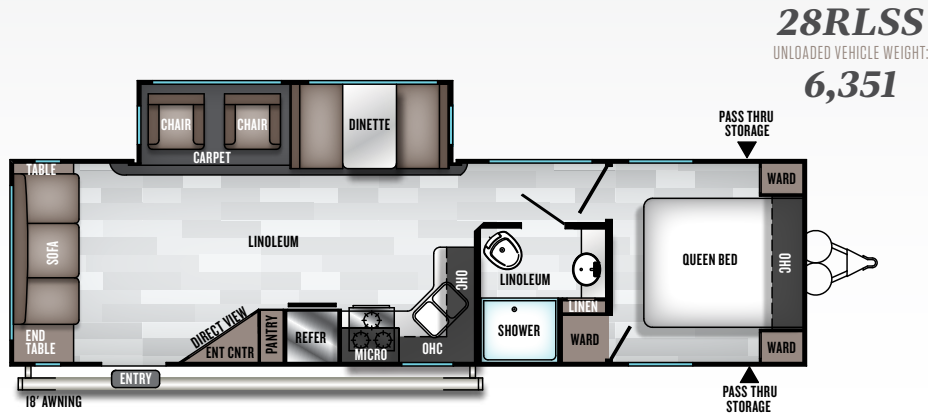


SALEM  
**TRAVEL TRAILERS**

FLOORPLANS & SPECIFICATIONS







|                                | 26DBUD | 27DBK  | 27RE   | 27RKS  | 28RLSS | 30KQBSS | 31KQBTS | 32BHDS |
|--------------------------------|--------|--------|--------|--------|--------|---------|---------|--------|
| HITCH WEIGHT (LBS.)            | 795    | 701    | 965    | 950    | 762    | 860     | 905     | 859    |
| AXLE WEIGHT (LBS.)             | 6090   | 5679   | 6677   | 5800   | 5589   | 5920    | 7630    | 7096   |
| UNLOADED VEHICLE WEIGHT (LBS.) | 6885   | 6380   | 7642   | 6750   | 6351   | 6780    | 8535    | 7955   |
| CARGO CARRYING CAPACITY (LBS.) | 872    | 1283   | 2245   | 1162   | 1373   | 2777    | 1292    | 1826   |
| EXTERIOR LENGTH (LBS.)         | 33' 2" | 32"    | 33' 6" | 33' 7" | 34' 1" | 33'     | 36' 6"  | 35' 8" |
| EXTERIOR HEIGHT (LBS.)         | 11' 3" | 11' 4" | 11' 2" | 11' 2" | 11' 5" | 11' 2"  | 11' 3"  | 11' 2" |
| FRESH WATER (GAL.)             | 40     | 39     | 40     | 40     | 40     | 39      | 39      | 39     |
| BLACK WATER (GAL.)             | 30     | 30     | 27     | 27     | 30     | 27      | 27      | 30     |
| GREY WATER (GAL.)              | 60     | 60     | 27     | 54     | 30     | 57      | 54      | 57     |
| TIRE SIZE (IN.)                | 15     | 15     | 15     | 15     | 15     | 15      | 15      | 15     |

SALEM  
**FLOORPLAN KEY**

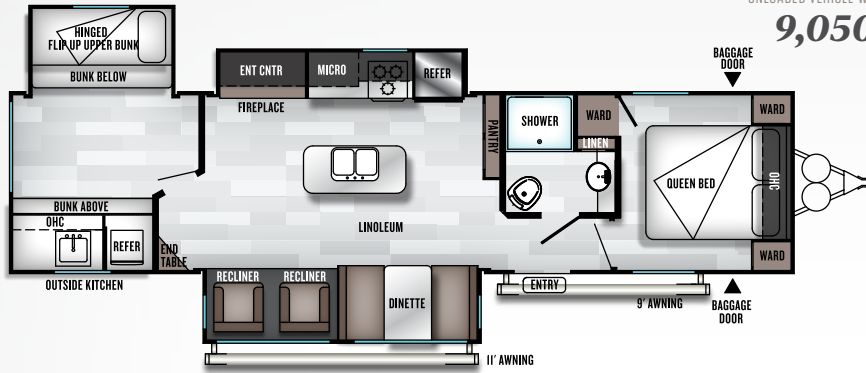
Pillows and blankets shown on beds and bunks are for demonstration purposes only and do not come with your new coach.

OHC :: OVERHEAD CABINET  
WARD :: WARDROBE

MICRO :: MICROWAVE  
LAV :: BATHROOM SINK

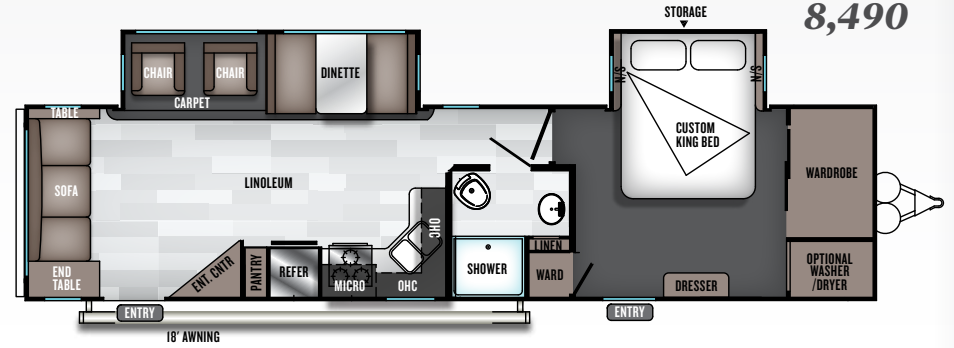
### 32BHT

UNLOADED VEHICLE WEIGHT:  
**9,050**



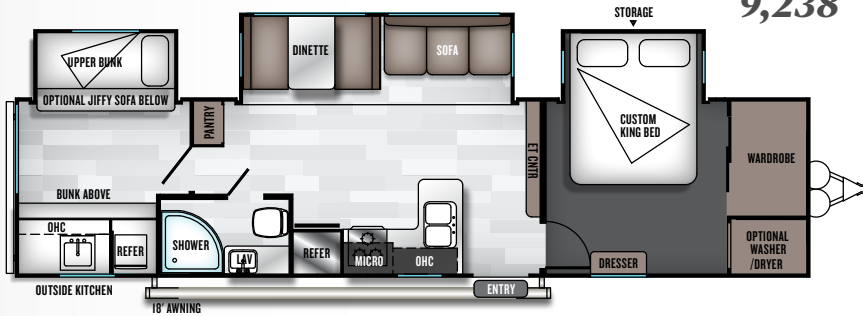
### 32RLDS

UNLOADED VEHICLE WEIGHT:  
**8,490**



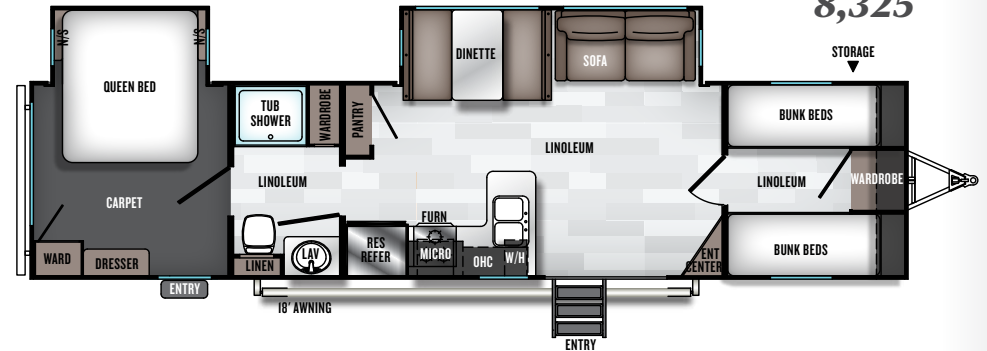
### 33TS

UNLOADED VEHICLE WEIGHT:  
**9,238**



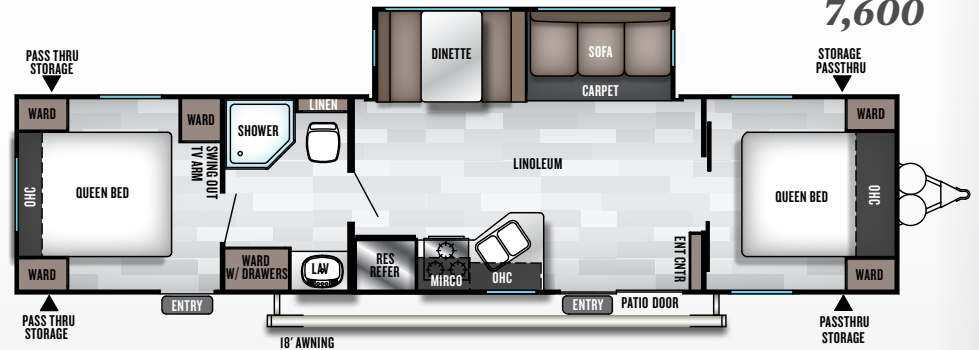
### 36BHDS

UNLOADED VEHICLE WEIGHT:  
**8,325**



### 37BHSS2Q

UNLOADED VEHICLE WEIGHT:  
**7,600**



|                                | 32BHT  | 32RLDS | 33TS   | 36BHDS | 37BHSS2Q |
|--------------------------------|--------|--------|--------|--------|----------|
| HITCH WEIGHT (LBS.)            | 1080   | 980    | 1088   | 1015   | 970      |
| AXLE WEIGHT (LBS.)             | 7970   | 7510   | 8150   | 7310   | 6630     |
| UNLOADED VEHICLE WEIGHT (LBS.) | 9050   | 8490   | 9238   | 8325   | 7600     |
| CARGO CARRYING CAPACITY (LBS.) | 2192   | 1412   | 1852   | 3316   | 2271     |
| EXTERIOR LENGTH (LBS.)         | 37' 6" | 38'    | 38' 9" | 38' 8" | 39'      |
| EXTERIOR HEIGHT (LBS.)         | 11' 7" | 11' 6" | 11' 4" | 11' 5" | 11' 2"   |
| FRESH WATER (GAL.)             | 40     | 40     | 40     | 40     | 39       |
| BLACK WATER (GAL.)             | 38     | 27     | 30     | 38     | 27       |
| GREY WATER (GAL.)              | 57     | 27     | 54     | 27     | 30       |
| TIRE SIZE (IN.)                | 15     | 15     | 15     | 15     | 15       |



# SALEM STANDARDS & OPTIONS

## **Construction & Exterior**

- 5/8" tongue & groove plywood floor decking
- Full walk on one-piece seamless SuperFlex® roof w/ 12 year manufacturer defect warranty
- Extra large full pass through storage (Per floorplan)
- Cold crack and mildew resistant vinyl patio awning
- Safety glass windows
- Metal framed 30" smooth radius corner fiberglass main entry door
- Powder coated I-beam frame
- Cambered chassis
- 16-gal. per hour Gas/Electric quick recovery DSI water heater
- Water heater by-pass
- Nitrogen filled tires
- 2" wall construction, 16" (or less) on center
- R-7 fiberglass insulation throughout
- 13 ply cross micro-laminated beam header above slide out
- Triple seal slide out system
- Flush floor electric slide out systems
- Swing arm entry assist handle
- Two LED marine grade exterior speakers
- Aerodynamic front radius profile
- .040 Smooth aluminum front cap
- One-piece slip-resistant Shaw® vinyl flooring

## **Kitchen**

- New Mortise and Tenon Shaker Style Cabinet Doors
- 10.7 cu. ft. 12v Ever Chill® refrigerator (Limited Program Option)

- High rise spring faucet (Limited Program Option)
- Residential Undermount Kitchen Sink
- Stainless steel finish microwave w/ carousel
- 3-Burner, high output range with oven (2 yr. warranty) Stainless steel / Black finish on oven door
- Stainless steel finish range hood w/ 12-volt exhaust fan and light
- 27" tall overhead cabinet (Kit)
- Wood drawers w/ furniture-grade plywood sides
- Full extension ball bearing drawer guides
- Shelving in overhead cabinets in kitchen
- Central switch location for command center
- Brushed stainless finish hardware
- Abundant cabinet storage
- Roll-up stainless steel sink cover

## **Living Room**

- 80" interior height (Limited Program Option)
- Ducted 13,500 BTU roof air conditioner w/ quick cool
- Stow & Go storage under jiffy sofa
- Booth dinette (Most models) and U-shaped dinette (Some models)
- Panoramic windows with cross ventilation
- Digital antenna with booster
- Bluetooth FM stereo and New soundbar.
- 25K BTU Suburban® forced air DSI furnace w/ digital thermostat (2 yr. warranty)
- In-floor ducted heat
- Cable TV hookup living room and bedroom
- Wall switch controls for ceiling lights at living room and bathroom

## **Bedroom**

- NEW - Overhead cabinets in bedroom
- NEW USB ports
- NEW Denver mattress with pillow top in master bed (Limited program option)
- Strut lifted storage area under bed (Master bedroom) 80 lb. struts
- Bedside mirrored wardrobes w/ shelf above bed
- Bedside 110-volt power outlets (2)
- Increased space at the foot of the bed (Most models)
- Solid bedroom privacy doors (Most models)
- Shoe nook at the foot of the master bed with 4 cu ft. of NEW stow and go storage.
- Double USB ports by beds

## **Bathroom**

- 12-volt power bath roof exhaust vent
- Foot flush toilet
- Standard molded surround showers
- Retractable shower door on all 30 x 36 showers (per floorplan)

## **Security & Safety**

- LP leak detector
- Smoke detector
- Carbon monoxide detector
- Fire extinguisher
- Welded heavy duty safety chains
- Electric brakes (All wheels)
- GFI receptacles
- ANSI 119.2 certified
- Meets all national highway administration specifications
- RVIA approved product

## **Options**

- Skylight over tub
- 30-lb LP bottles w/ cover and auto change-over
- 15,000 BTU ducted air w/ quick cool
- Radial tires (Mandatory option)
- Spare tire and carrier

## **Limited Time Options**

**(Contact your local dealer for more information)**

- 10.7 cu. ft. 12v Ever Chill® refrigerator
- Denver 9" pillowtop mattress
- SolidStep triple step (Main door only)
- Exterior white LED light strip under awning
- LG Solid Surface Kitchen Countertops
- Modern roller shades w/ autoStop (Living, Bed)
- Residential designer spring faucet
- Green pkg: Furrion® solar prep & LED mushroom lights
- Power awning w/ adjustable legs
- J.T. Strong Arm jacks and power tongue jack
- Furrion® backup camera prep
- Power tongue jack
- Fireplace

**Contact your dealer for a complete list of options.**

## SPECIFICATION DEFINITIONS

**GVWR (Gross Vehicle Weight Rating)** - is the maximum permissible weight of the unit when fully loaded. It includes all weights, inclusive of all fluids, cargo, optional equipment and accessories. For safety and product performance do NOT exceed the GVWR.

**GAWR (Gross Axle Weight Rating)** - is the maximum permissible weight, including cargo, fluids, optional equipment and accessories that can be safely supported by a combination of all axles.

**UVW (Unloaded Vehicle Weight)\*** - is the typical weight of the unit as manufactured at the factory. It includes all weight at the unit's axle(s) and tongue or pin and LP Gas. The UVW does not include cargo, fresh potable water, additional optional equipment or dealer installed accessories.

\*Estimated average based on standard build optional equipment.

**CCC (Cargo Carrying Capacity)\*\*** - is the amount of weight available for fresh potable water, cargo, additional optional equipment and accessories. CCC is equal to GVWR minus UVW. Available CCC should accommodate fresh potable water (8.3 lbs per gallon). Before filling the fresh water tank, empty the black and gray tanks to provide for more cargo capacity.

\*\* Estimated average based on standard build optional equipment

Each Forest River RV is weighed at the manufacturing facility prior to shipping. A label identifying the unloaded vehicle weight of the actual unit and the cargo carrying capacity is applied to every Forest River RV prior to leaving our facilities.

The load capacity of your unit is designated by weight, not by volume, so you cannot necessarily use all available space when loading your unit.

# THE SALEM LINE-UP



SALEM CRUISE LITE



SALEM



SALEM VILLA | VILLA ESTATE



SALEM HEMISPHERE

## CUSTOMER SATISFACTION



[www.ForestRiverBuyLocal.com](http://www.ForestRiverBuyLocal.com)

**FREE MEMBERSHIP**  
to Forest River Owners' Group

[www.forestriverfrog.com](http://www.forestriverfrog.com)



**Learn More**  
Scan this barcode using a QR Reader on your smart phone to learn more about Forest River.



A Berkshire Hathaway company.

Forest River, Inc. 55470 C.R. 1 Elkhart, IN 46515 | (574) 533-5934  
[www.forestriverinc.com/Salem](http://www.forestriverinc.com/Salem) | [www.forestriveraccessories.com](http://www.forestriveraccessories.com)



## PRE-DELIVERY INSPECTION FACILITY

20,000 square feet of quality assurance. The bare essentials for a premium product. This state-of-the-art facility gives immediate daily feedback to production for quality assurance in every unit built.

## 24/7 EMERGENCY ROADSIDE ASSISTANCE WITH VEHICLE PURCHASE\*

|                |                 |
|----------------|-----------------|
| TOWING         | WINCH-OUT       |
| JUMP-STARTS    | MOBILE MECHANIC |
| TIRE CHANGES   | TECHNICAL       |
| FLUID DELIVERY | SUPPORT         |
| LOCKOUT        | DEALER LOCATOR  |
| SERVICE        | SERVICES        |



\*VALID FOR 1 YEAR FROM DATE OF PURCHASE

## YOUR SALEM DEALER

2019