

LUXURY FIFTH WHEELS

Sandpiper



GET BACK TO NATURE ON YOUR OWN TERMS

Wherever your travels may take you, with Sandpiper you will enjoy all of the conveniences and comfort of home while your on the road. Residential finishes, comfortable living spaces and abundant storage are the hallmarks of Sandpiper fifth wheels.



Sandpiper



FREE PREMIUM PLUS PACKAGE*

*LIMITED TIME OFFER



PREMIUM CORIAN SOLID SURFACE KITCHEN COUNTERTOPS

Quality and durability are synonymous with this brand name countertop.



ROLLER SHADES THROUGHOUT

Both stylish and functional the roller shades look great and provide privacy when you want it.



KING WIFI EXTENDER

Stay connected anywhere you go with an on board gateway between all your web-enabled devices and a local Wi-Fi source.



OAV CONTROL PANEL

OAV one touch control panel with smart phone app.



STAINLESS STEEL GAS OVEN

Upgraded stainless steel gas oven with digital readout.



RESIDENTIAL REFER

20 cu. ft. stainless French door residential refer with 1,000 watt inverter and battery disconnect



SIDE SECURITY AND BACKUP CAMERA PREP

Our units are ready for the latest technology to deliver the best camping experience.



WIDE STANCE HYDRAULIC LANDING GEAR

Quickly and easily set up and breakdown you Sandpiper.



RADIUS ALUMINUM QUAD STEP

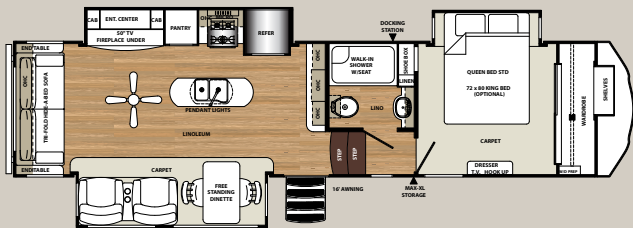
Safe and secure these entry steps are the epitome of form follows function.

33RLIK

CEDAR
DECOR

OPEN LIVING

The 33RLIK is a great floorplan that is towable, livable, and user friendly. Its open concept offers opposing slides in the rear that opens the unit up to almost 14' of inside living space. With the theatre seating directly across from the entertainment center it makes spending time lounging very comfortable.





THOUGHTFUL FEATURES



HI-RISE FAUCET

Sandpiper's Hi-Rise faucet with sprayer is both functional and stylish.



CONVENIENT FEATURES

Our stainless steel digital microwave is a great way to heat up a cup of tea or make a quick snack.



PENDANT LIGHTING

Our pendant lighting fixtures are just one more example of our commitment to true residential design.



RESIDENTIAL FINISHES

All Sandpiper kitchens feature Mocha accent crown molding over the cabinets.

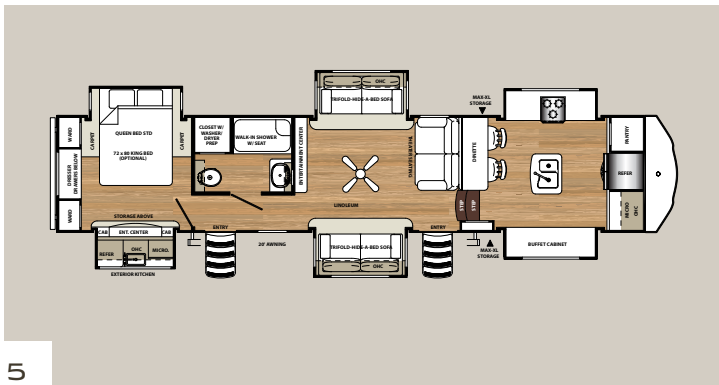


38FKOK

ASH DECOR

RESIDENTIAL STYLING

The 38FKOK leaves nothing out when it comes to entertainment. While you're inside enjoying the abundant living area, notice the seating is directly across from the LED HDTV. In the kitchen the storage is endless with more countertop space than ever offered before. All Sandpipers feature stainless steel appliances to complete the residential design of the interior.



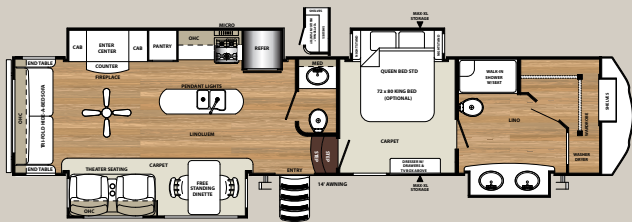


368FBDS

CEDAR
DECOR

CONVENIENT COMFORT

The 368FBDS is a dynamic addition to the Sandpiper line-up. This floorplan offers a huge rear living area with a large island for accommodating most any kitchen chef. Also this floorplan offers the largest walk-in closet available in any Sandpiper.



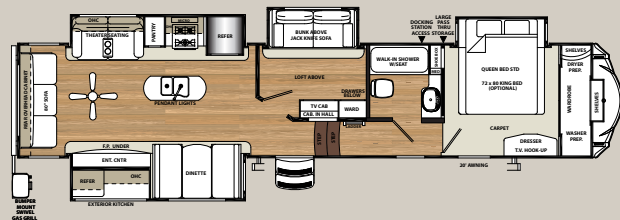


372LOK

CEDAR
DECOR

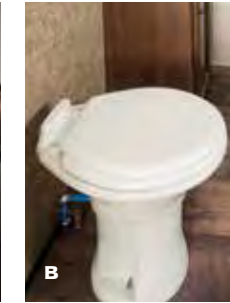
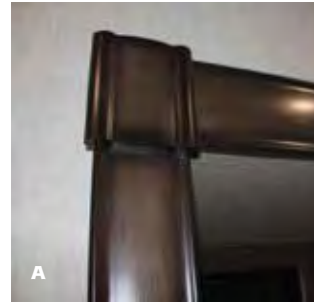
THOUGHTFUL DESIGN

The 372LOK is a great floorplan to accommodate a couple of extra visitors. This floorplan has a private room in the center of the unit that can be used for a spare bedroom, office space, or just storage. Above the spare room you will find a nice loft area for even more sleeping or storage.



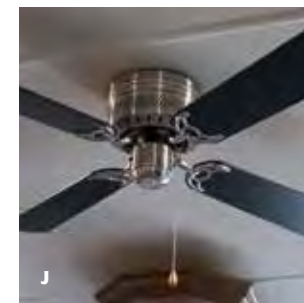
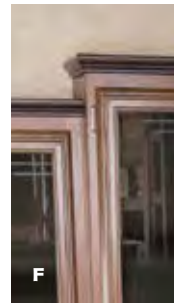


INTERIOR FEATURES



- A Handcrafted fascia gives the slide-out a distinguished look
- B Porcelain foot flush toilet, easy to use, easy to clean
- C Exclusive Denver Mattress
- D The Tri-fold hide-a-bed sofa offers you and your guests more sleeping options
- E LED HDTV with premium soundbar and Sony DVD player
- F Mocha accented crown molding gives the Sandpiper kitchen a truly residential finish

- G Real wood drawers on soft close, full extension, ball bearing drawer guides
- H Contemporary master bedroom headboard with integrated LED lighting
- I Theater seating with LED lighting.
- J Contemporary ceiling fan
- K Enjoy the warmth and comfort of the electric fireplace
- L The Sandpiper Signature package includes stainless steel appliances



EXTERIOR FEATURES



A



B



C



- A Insulated heavy duty pass thru storage area with Slam Lock baggage doors
- B Wall mounted digital thermostat
- C Optional hydraulic wide stance power front jacks
- D Quadruple aluminum entry steps

- E The quick connect spray port is great for easy clean up
- F 110v outlet and cable outlet conveniently located in the pass-thru storage area
- G Sandpiper's lighted docking station

- H Gel coat fiberglass protects from UV rays and prevents yellowing and cracking.
- I Drip rail with extra long drip spouts help prevent black streaking
- J 16" F-Rated tires with aluminum rims

- K Heated and enclosed underbelly protects your coach and improved airflow allows for a sturdier ride
- L QAV control panel allows you to do everything from operate your awning and lights to monitoring holding tank levels



D



E



F



G



H



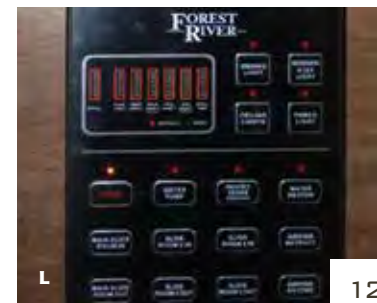
I



J



K

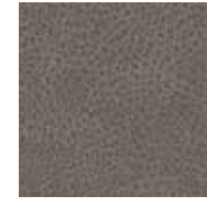


L

STANDARDS AND OPTIONAL FEATURES

DECOR OPTIONS

ASH INTERIOR



CEDAR INTERIOR



EXTERIOR FEATURES

- Color match high gloss gel coated colored exterior fiberglass
- Painted two tone aerodynamic fiberglass front cap with improved turning radius
- Docking station: easy winterization, hot and cold spray port, black tank flush, pull valves for tanks
- Enclosed and heated dump valves
- Large tinted windows with 80/20 UV prohibitor
- Aluminum radius quad entry steps
- "One Touch" Dometic® electric awning with LED light strip
- Power front jacks with spring loaded snap pins
- 16" Radial tires-F Rated
- Automotive-style fender skirts
- Hitch light
- Exterior kitchen (per floorplan)
- Porch light with interior switch
- 30 lb. double LP tanks with auto change over
- Roof ladder
- 2 LED lighted exterior speakers
- Rain gutters with extra long drip spouts (prevents black streaking)
- Insulated heavy duty slam lock baggage doors
- Exterior foldable grab handle
- Unobstructed drop frame pass through storage are with cable jacks and 110V outlet
- 2 spray ports with 25' hose (one on each side)
- Upgraded aluminum rims
- 7,000 Lb. axles
- Friction hinge entry door
- Hydraulic front jacks

INTERIOR FEATURES

- 84" interior height with 6'4" slide heights
- Hardwood slideout fascia
- Stainless steel appliances
- Beauflor® rustic wood plank linoleum
- Decorative backsplash
- Two color coordinated interiors (Ash, Cedar)
- Soft close full extension drawer glides
- Hidden hinged cabinet doors with soft close full extension drawer glides
- Stainless steel double bowled under mounted kitchen sink
- Washer/Dryer prep
- Handmade cabinetry with screwed lumber core stile construction
- LED lighting throughout
- Residential countertops
- Recessed residential lighting
- Colored shower surround with etched tile pattern
- Upgraded adjustable shower head with shelf
- Theater seating with LED lighting
- Accent paneling in slideouts
- Accent lighting over dinette
- LED lighting at islands
- Night lights on fifth wheel steps
- Walk-in shower with seat (most models)
- Mocha accent crown molding over kitchen cabinets
- Extra large picture windows throughout
- Vented side windows in slideouts
- TV antenna with booster
- Solid wood drawer fronts with birch sides
- Upgraded raised panel cabinet doors with designer rails

- Bedroom slideout fascia
- LED lighted headboard
- Teddy Bear® bunk mats
- 40" flat screen LED HD TV
- Premium soundbar with built in flush mounted DVD player
- Designer window treatment accented per decor
- 9 cu. ft. stainless refrigerator
- Ceiling fan
- Tri-fold hide-a-bed sofa
- Glider sofa with USB/110 outputs (standard in all off door bunk slides)
- Residential stain resistant carpet
- Quilted bedspread
- Trash receptacle in kitchen

APPLIANCES/ SYSTEMS

- 15K A/C with Quick Cool
- 9 cu. ft. refrigerator
- Floor ducted 35,000 BTU furnace
- OTR stainless steel microwave
- Three burner high output range with 22" oven
- Interior monitor panel for holding tanks
- Flush floor hydraulic slideouts (per floorplan)
- Dual battery prep
- Satellite and cable hookup with RG-6 cable for high quality picture
- Porcelain foot flush toilets
- 10 Gal. DSI water heater
- 65 Amp converter
- EZ Breeze® power fan in bathroom

CONSTRUCTION

- Welded aluminum-framed, vacuum bonded laminated superstructure

- 2" x 3" floor joists 12" on center
- 5/8" tongue & groove plywood floor decking
- 3/8" roof decking (full walk-on roof)
- Cambered powder coated frame with rust prohibitor
- Fully enclosed heated underbelly
- 5" truss roof rafters
- R-10E sidewall construction
- Laminated sidewalls
- Laminated slide-out walls

POPULAR OPTIONS

- MOR/ryde "Step Above" entry step
- Roto Flex hitch pin
- Electric rear jacks
- Tri-fold hide-a-bed with hinged bunk overhead (bunk slides)
- 6 point hydraulic leveling system
- Solid surface countertops in kitchen
- Free-standing dinette with 4 chairs (372LOK, 382VIEW, 383RBLOK, 384QBOK)
- Washer and dryer (per floorplan)
- Generator prep
- 15K air conditioner-bedroom
- Fantastic fan with rain sensor
- 32" bedroom TV
- 12 Volt heated holding tanks
- Equaflex® equalizer system
- Central vacuum
- R-38E insulation
- Slide room awnings (all slides)
- King Bed (N/A 381RBOK, 382VIEW, 383RBLOK, 384QBOK)
- Two color coordinated folding chairs

FOR YOUR SAFETY

- Smoke alarm
- Fire extinguisher
- Breakaway switch (battery hook-up required)
- Dead-bolt lock on entry door
- LP/CO2 gas detector
- Fire escape windows

POLAR TECH PACKAGE

- Thermal pane windows
- Heated holding tanks
- R-38E roof & all floor insulation
- 40K BTU furnace

SANDPIPER SIGNATURE PACKAGE

- 9 cu. ft. stainless refer
- Stainless appliance package
- Slam lock baggage doors
- Denver pillowtop mattress
- 15K air conditioner w/prep for 2nd A/C
- 30" OTR microwave
- Residential pullout kitchen faucet
- Backsplash
- 10 Gal. G/E water heater w/DSI
- Soft close residential drawer and cabinet doors
- 16" Spare tire kit
- Docking station
- Aluminum wheels w/7K axles
- High gloss color matched gel-coated Fiberglass exterior
- Washer/dryer prep
- 40" Flat screen television (most models)
- Water filter system
- Premium sound bar with built in DVD player

- Rustic wood Beauflor™ flooring
- Power fan in bathroom(s)
- Aerodynamic two tone painted front Cap
- Tri fold hide-a-bed sofa
- "One touch" domestic electric awning with LED light strip
- LED interior lighting throughout

PREMIUM PLUS PACKAGE (LIMITED TIME OFFER)

- Premium Corian solid surface kitchen countertops
- Wide stance hydraulic landing gear
- 20 cu. ft. stainless French door residential refer with 1,000 watt inverter and battery disconnect
- Roller shades throughout
- Gas cooktop with stainless steel oven
- Quad Aluminum Step (Both main and second entry doors standard)
- King Wifi Extender System
- Back Up Camera Prep

BUILT TO LAST

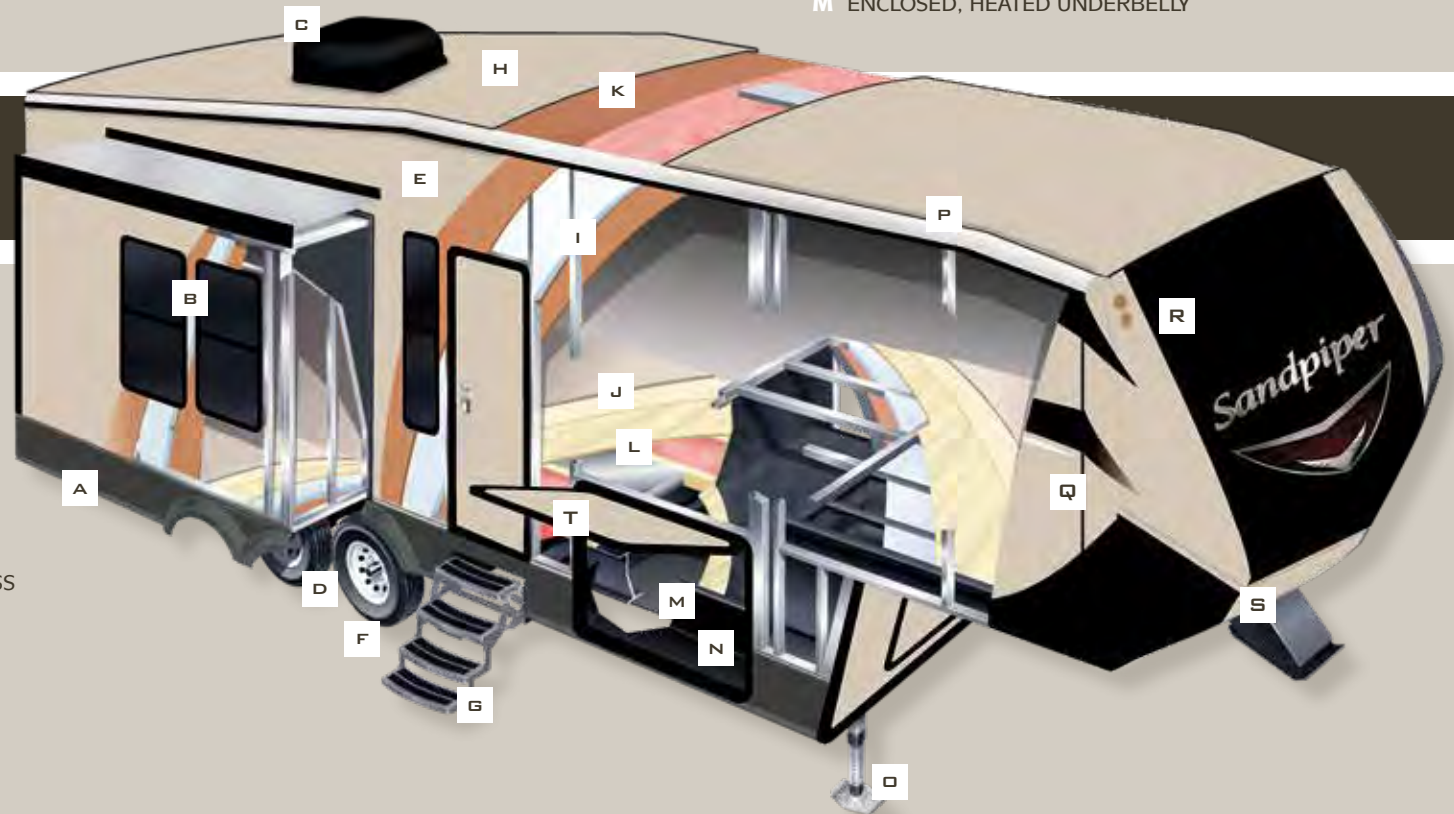
The Sandpiper is built to last using only the best materials to ensure that your coach is in it for the long haul. Careful engineering, well appointed craftsmanship and an uncompromising sense of pride go into every fifth wheel that we produce. Rest assured that your Sandpiper is built for luxury living.



- A ROLLED ALUMINUM SIDE SKIRTING
- B TINTED SAFETY GLASS WINDOWS (80%)
- C THERMOSTAT CONTROLLED DUCTED 15K BTU AIR CONDITIONING
- D DEXTER AXLES WITH AUTO ADJUST BRAKES
- E LAMINATED VACUUM BONDED ALUMINUM SIDEWALLS
- F 16" F-RATED RADIAL TIRES (STANDARD)
- G ALUMINUM RADIUS QUAD ENTRY STEPS
- H SEAMLESS ONE PIECE ROOFING (12 YR. WARRANTY)
- I 2" BLOCK FOAM INSULATION
- J DELUXE STAIN RESISTANT CARPET WITH PADDING
- K 3/8" ROOF DECKING (FULL WALK-ON ROOF)
- L 5/8" TONGUE AND GROOVE PLYWOOD FLOORING
- M ENCLOSED, HEATED UNDERBELLY

SOLID CONSTRUCTION

- N I-BEAM POWDER-COATED FRAME W/ RUST INHIBITOR
- O POWER FRONT JACKS WITH QUICK RELEASE SNAP PINS (HYDRAULIC OPTIONAL)
- P SLEEK RADIUS ROOF
- Q PAINTED COLOR MATCHED HIGH GLOSS GEL-COATED FIBERGLASS EXTERIOR
- R TWO TONE PAINTED GEL-COAT FIBERGLASS FRONT CAP (STANDARD)
- S IMPROVED FRONT CAP FOR SHARPER TURNING RADIUS
- T INSULATED SLAM LOCK BAGGAGE DOORS



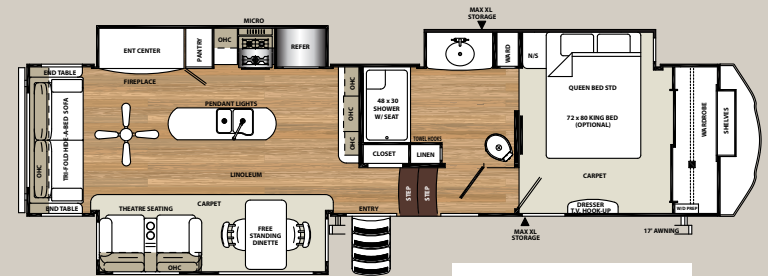


FLOORPLANS

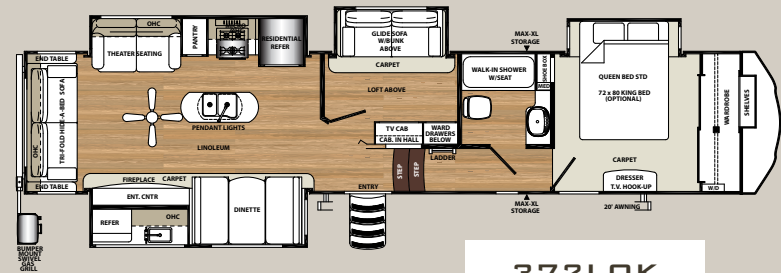
MODEL	33RLIK	345RLOK	357RE	367DSOK	368FBDS	372LOK	377FLIK
HITCH	1,980	TBD	2,319	2,415	2,173	2,474	2,235
UVW	10,648	10,883	11,573	12,461	11,892	12,962	12,283
GVWR	15,500	15,500	15,500	15,500	15,500	15,500	15,500
CARGO	4,852	4,617	3,927	3,039	3,608	2,538	3,217
LENGTH*	35'7"	35'3"	37'11"	40'5"	41'3"	41'9"	40'7"
HEIGHT	13'2"	13'2"	13'2"	13'2"	13'2"	13'2"	13'2"
AWNING	14'	14'	20'	20'	12'	20'	21'
GRAY	52	134	104	134	104	134	134
BLACK	52	52	52	52	104	52	52
FRESH	60	60	60	60	60	60	60

*LENGTH BUMPER TO HITCH

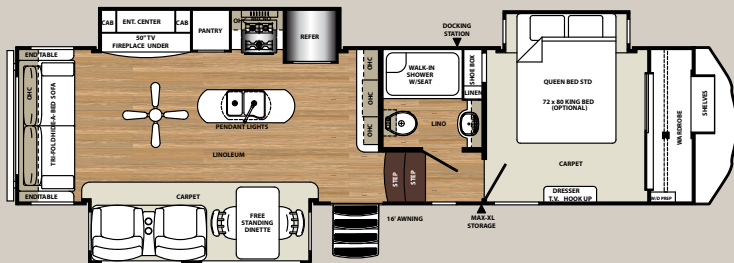
PLEASE SEE BACK COVER FOR MORE INFORMATION REGARDING WEIGHTS.



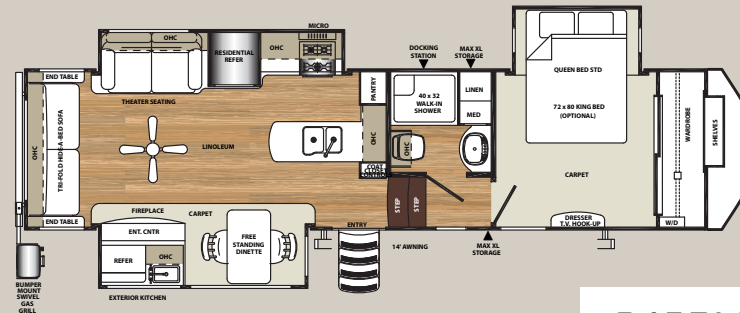
357RE



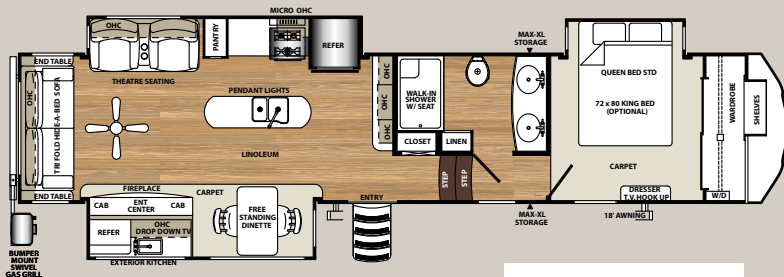
372LOK



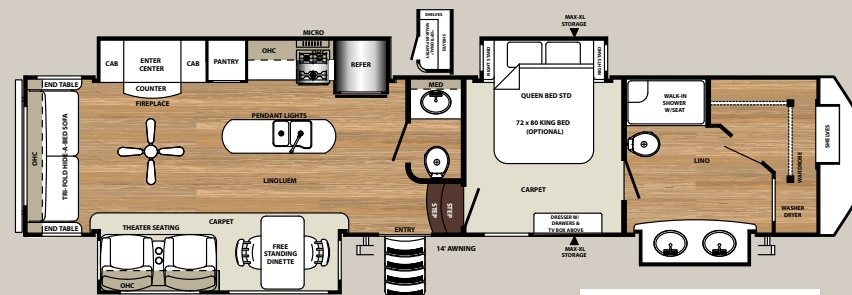
33RLIK



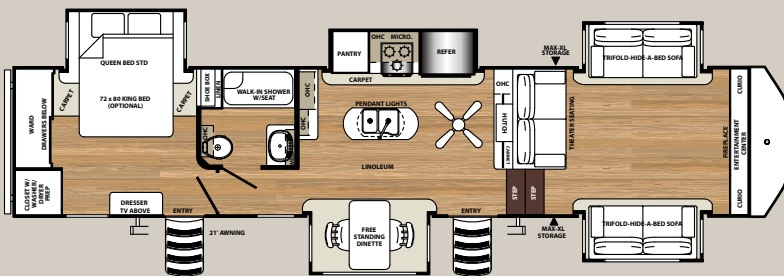
345RLOK



367DSOK



368FBDS



377FLIK

Sandpiper

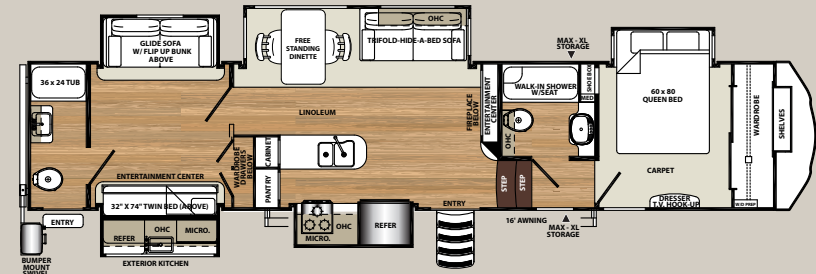


FLOORPLANS

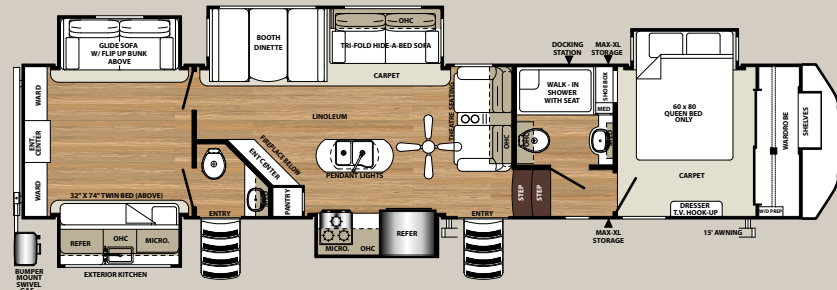
MODEL	379FLOK	38FKOK	381RBOK	382VIEW	383RBLOK	384QBOK	389RD
HITCH	2,495	2,256	2,519	2,618	2,184	2,261	2,384
UVW	12,819	12,823	13,131	12,898	13,469	13,132	13,042
GVWR	15,500	15,500	15,500	15,500	15,500	15,500	15,500
CARGO	2,681	2,677	2,369	2,602	2,031	2,368	2,458
LENGTH*	41'5"	41'8"	41'8"	41'4"	42'2"	41'8"	41'8"
HEIGHT	13'2"	13'2"	13'2"	13'2"	13'2"	13'2"	13'2"
AWNING	20'	20'	16'	18'	15'	15'	20'
GRAY	134	134	134	134	127	134	104
BLACK	52	52	82	104	82	104	52
FRESH	60	60	60	60	60	60	60

*LENGTH BUMPER TO HITCH

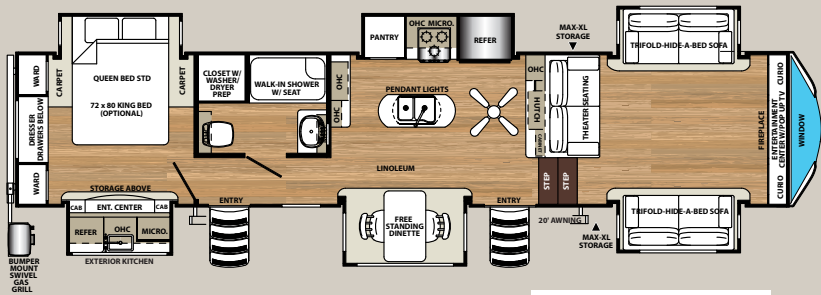
PLEASE SEE BACK COVER FOR MORE INFORMATION REGARDING WEIGHTS.



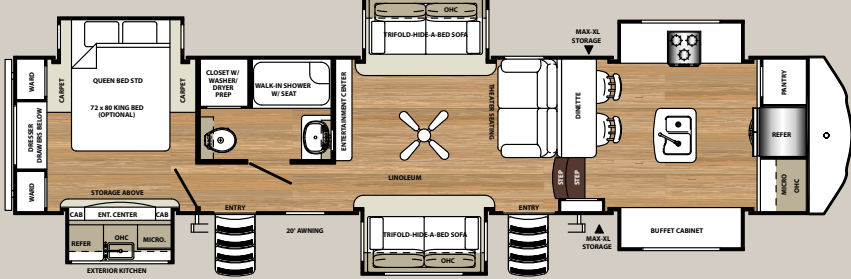
381RBOK



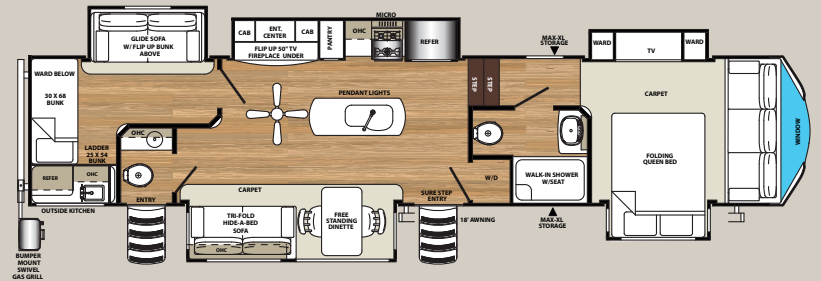
384QBOK



379FLOK



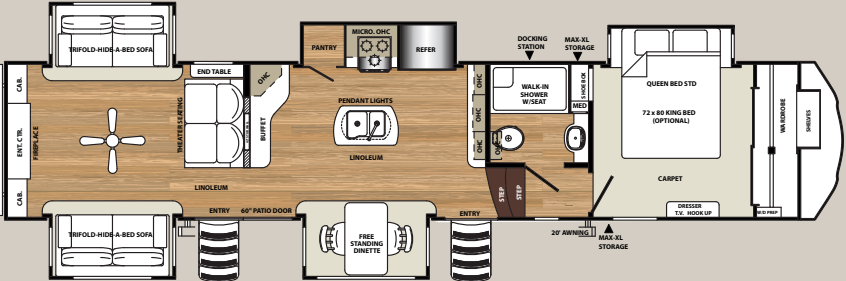
38FKOK



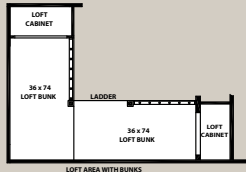
382VIEW



383RBLOK



389RD



Sandpiper

GVWR (Gross Vehicle Weight Rating) - is the maximum permissible weight of the unit when fully loaded. It includes all weights, inclusive of all fluids, cargo, optional equipment and accessories. For safety and product performance do NOT exceed the GVWR.

GAWR (Gross Axle Weight Rating) - is the maximum permissible weight, including cargo, fluids, optional equipment and accessories that can be safely supported by a combination of all axles.

UVW (Unloaded Vehicle Weight)* - is the typical weight of the unit as manufactured at the factory. It includes all weight at the unit's axle(s) and tongue or pin and LP Gas. The UVW does not include cargo, fresh potable water, additional optional equipment or dealer installed accessories.

*Estimated Average based on standard build optional equipment.

CCC (Cargo Carrying Capacity)** - is the amount of weight available for fresh potable water, cargo, additional optional equipment and accessories. CCC is equal to GVWR minus UVW. Available CCC should accommodate fresh potable water (8.3 lbs per gallon). Before filling the fresh water tank, empty the black and gray tanks to provide for more cargo capacity.

** Estimated average based on standard build optional equipment

Each Forest River RV is weighed at the manufacturing facility prior to shipping. A label identifying the unloaded vehicle weight of the actual unit and the cargo carrying capacity is applied to every Forest River RV prior to leaving our facilities.

The load capacity of your unit is designated by weight, not by volume, so you cannot necessarily use all available space when loading your unit.

All information contained in this brochure is believed to be accurate at the time of publication. However, during the model year, it may be necessary to make revisions and Forest River, Inc., reserves the right to make all such changes without notice, including prices, colors, materials, equipment and specifications as well as the addition of new models and the discontinuance of models shown in this brochure. Therefore, please consult with your Forest River dealer and confirm the existence of any materials, design or specifications that are material to your purchase decision.



Sandpiper



PRE-DELIVERY INSPECTION FACILITY

20,000 square feet of quality assurance. The bare essentials for a premium product. This state-of-the-art facility gives immediate daily feedback to production for quality assurance in every unit built.



www.ForestRiverBuyLocal.com

24/7 EMERGENCY ROADSIDE ASSISTANCE

For a worry-free ownership experience Forest River includes one year of Coach-Net RV Technical & Roadside Assistance with each RV purchase. Whether new to the RV lifestyle or an experienced RV enthusiast, Forest River owners have 24/7 access to technical, operational and emergency road service coverage throughout the US & Canada. Coach-Net's fast, dependable service is just a phone call away.

Coach-Net[®]

RV Technical & Roadside Assistance

FREE MEMBERSHIP
to Forest River Owners' Group

www.forestriverfrog.com



Learn More

Scan this barcode using a QR Reader on your smart phone to learn more about Forest River.



A Berkshire Hathaway company.

Forest River, Inc.
55470 C.R. 1, Elkhart, IN 46515
(574) 389-4600
www.forestriverinc.com/Sandpiper
www.forestriveraccessories.com

YOUR LOCAL SANDPIPER DEALER