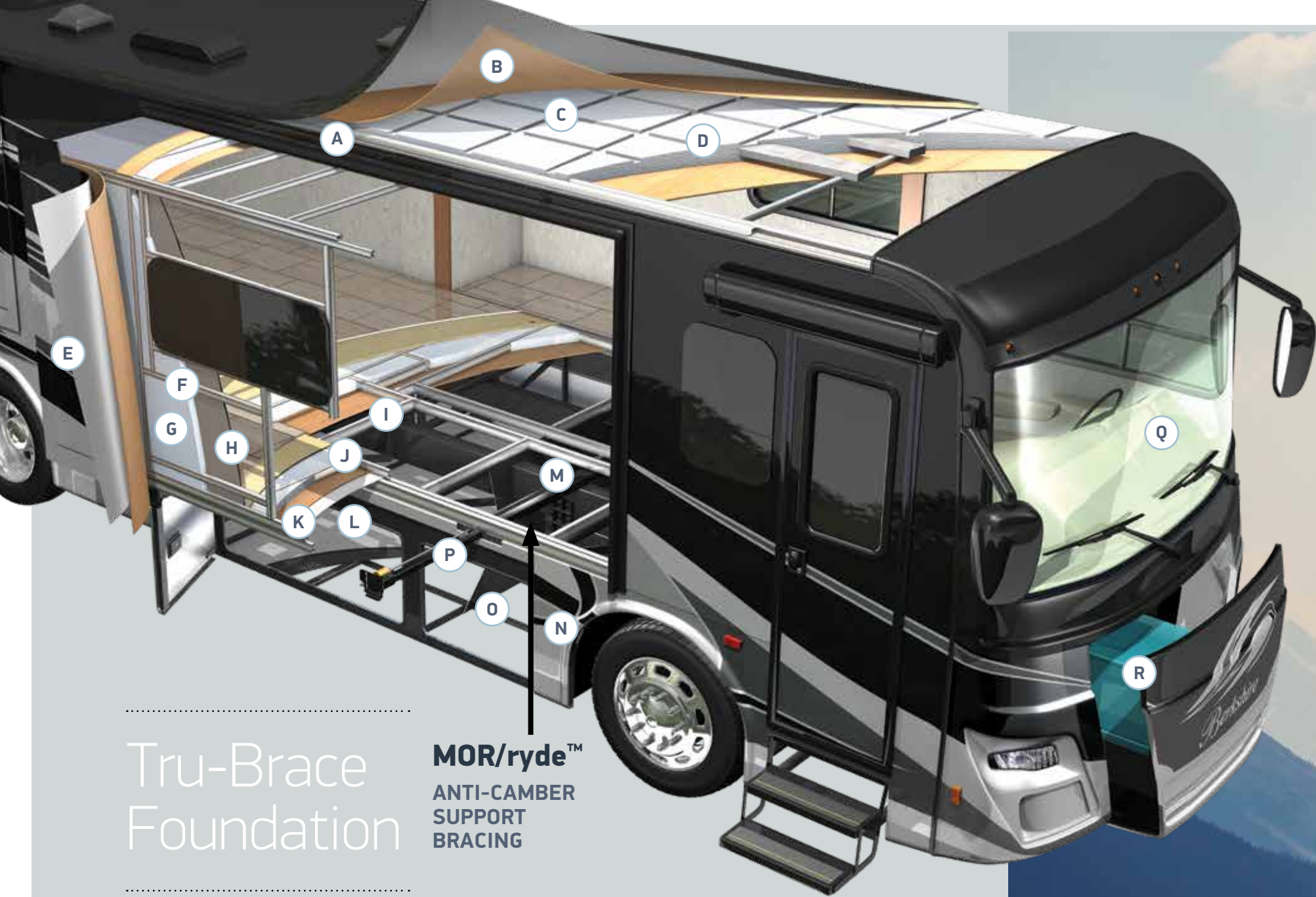


*Berkshire*<sub>XLT</sub>



by Forest River



Tru-Brace  
Foundation

**MOR/ryde™**  
ANTI-CAMBER  
SUPPORT  
BRACING

6" Roof at the Crown,  
Welded Aluminum  
Tube - Laminated  
Vacuum Bonded with  
Integrated A/C Ducting

- A Framing is welded 2" aluminum tube
- B 1/4" Luan top layer with 1 piece fiberglass
- C 5-1/4" radius polystyrene insulation
- D Galvanized metal backers for A/C's, satellite, solar panel and antennae

1-7/8" Thick Sidewall,  
Welded Aluminum Tube -  
Laminated Vacuum Bonded.

- E 1/4" Luan backed fiberglass sidewall
- F Heavy wall aluminum tube around perimeter and around slide openings
- G 1-1/2" polystyrene insulation
- H 1/8" interior décor finishing board

3-1/8" Floor, Vacuum  
Bonded Laminated

- I Framing is welded 2-1/2" aluminum tube
- J 2-1/2" polystyrene insulation
- K 1-piece 1/2" structure board
- L Darco, a waterproof underbelly material

Full Paint Welded Steel  
Chassis Structure

- M Tru-Brace, chassis stiffener system
- N 1-piece aluminized steel side skirt
- O 1-piece bent steel storage compartments
- P 1-1/2" insulated steel tube firewall

Fiberglass Molded  
Front and Rear Caps

- Q 1-piece automotive grade bonded windshield
- R Generator slide system



With the automotive-like feel and maneuverability of the ZF™ Independent Front Suspension, you'll have the driving confidence and peace-of-mind that comes with knowing you can access the tightest spaces with minimal turns. Essentially, it feels similar to driving a car.

Introducing the V-Ride™ Rear RV Suspension System from FCCC. As the first ever single axle suspension rated at 21,000 pounds and higher, it's designed for today's demanding luxury motorhome owners- who want the ability to carry more gear, the freedom to equip their interiors with premium amenities, and a comfortable, confident driving experience.



The standard UltraSteer I-Series features an independent suspension on the tag axle. This provides enhanced overall ride quality and stability, with comparable weight capacity and turning angle to the B-Series.\*

for more information please visit  
[www.forestriverinc.com/BerkshireXLT](http://www.forestriverinc.com/BerkshireXLT)





Your Luxury. Your Destination.

### **BERKSHIRE XLT**

Take a look inside the Berkshire XLT, this TAG axle model brings you more. More room, more control and more luxury. Shown here is the 45A floorplan with Saddle leatherette, Native Cherry woodgrain option and the Rustic Iron decor.

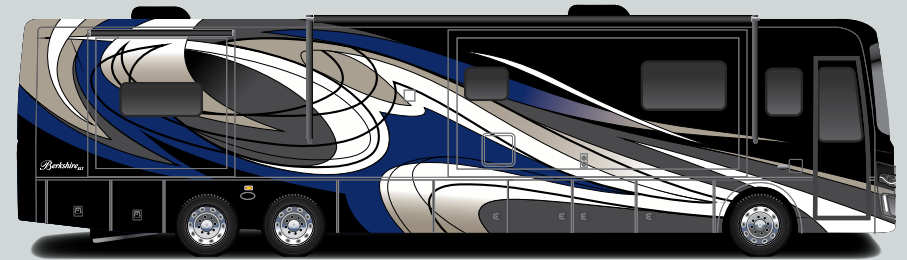




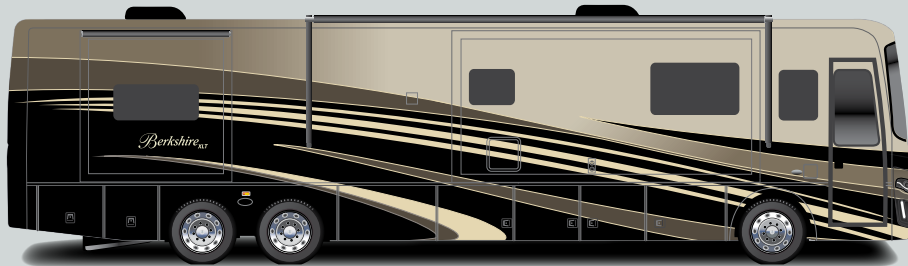


# Paint Options

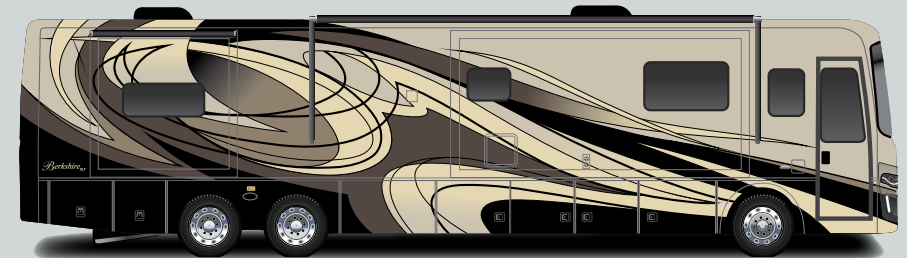
XLT



MALIBU



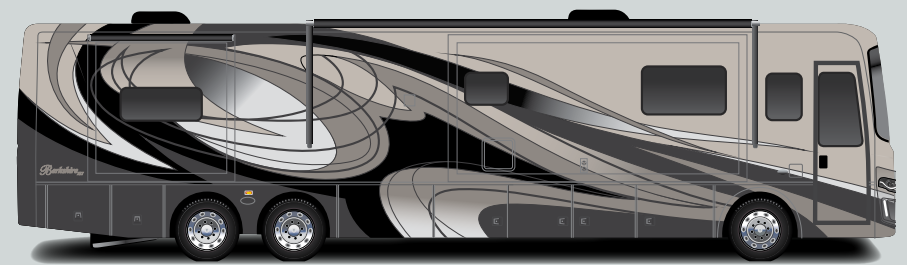
FOSSIL



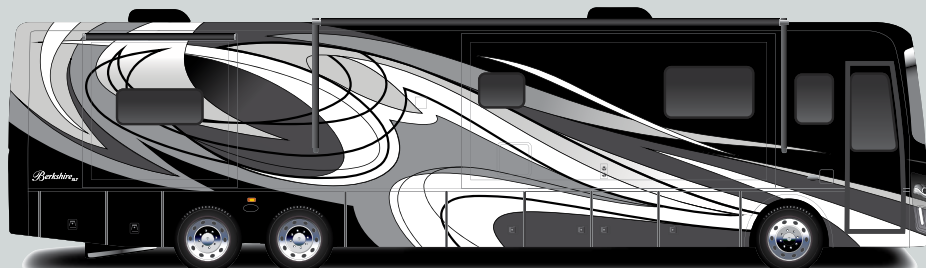
PATAGONIA



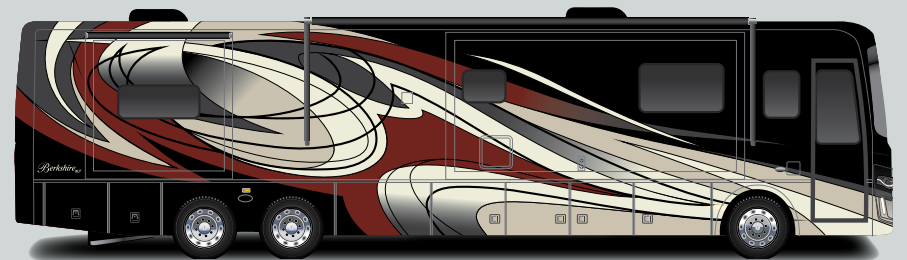
HEMATITE



CANTERBURY



SMOKEY GREY



FLORENCE



# Decor Options

## CUSTOMIZE YOUR INTERIOR

### WOOD GRAIN OPTIONS

(CHOOSE ONE)

- A Native Cherry
- B Bronze Maple



### LEATHERETTE OPTIONS

(CHOOSE ONE)

- A Champagne
- B Saddle



### DESIGNER FABRIC OPTIONS

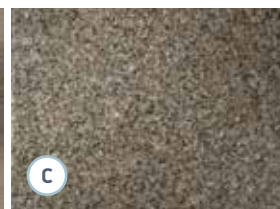
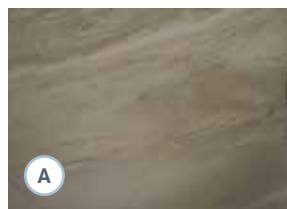
(CHOOSE ONE)

- A Rustic Iron
- B Silver Bay



### SURFACE OPTIONS

- A Standard Flooring
- B Wood Plank Flooring
- C Standard Countertop



## FIXED INTERIOR | White Diamond

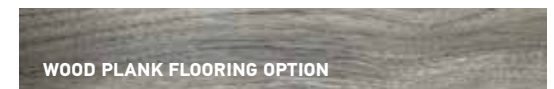
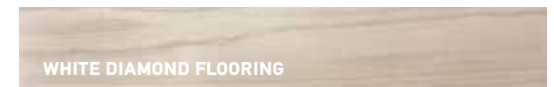


Executive  
Dark Cherry  
Wood Grain



Brisa  
Leatherette

### Designer Fabrics



# Standards + Options



## STANDARDS

### Chassis

- + Freightliner XCR Raised Rail Chassis
- + Cummins L9 Turbo Diesel, 450HP @ 2100RPM, 1250lb/ft Torque @1400RPM
- + Allison 3000MH 6-speed transmission
- + Optiview glass instrument panel
- + Steering wheel - w/radio audio, wipers, engine brake, cruise, adjustable pedals & transmission mode control
- + 120V Engine Heater 1000W
- + 22.5" Polished Aluminum Wheels
- + Michelin 315/80R22.5 Front, 295/80R22.5 Rear/Tag Tires
- + Trailer Hitch, 15,000 # Capacity
- + 150 gallon, locking dual fill fuel tank
- + Driver side remote fill, 15 Gallon DEF Tank
- + Day time running lights
- + 7-Pin tow power connector
- + 18.7 CFM air compressor
- + Farr Eco-air cleaner
- + Air filter restriction indicator
- + Brake line Air Dryer w/Heater
- + Automatic, heated moisture ejectors

- + Heavy duty-windshield wipers w/intermittent function
- + 160 amp alternator
- + Full air ABS brakes w/ auto slack adjuster
- + Two (2) 1900 CCA at 0 degree Fahrenheit, maint. free 12V batteries
- + Jacobs compression brake
- + Suspension Neway (front & tag axles) & V-ride (rear axle)
- + Sachs custom tuned shock absorbers
- + Auto air suspension deflation system
- + Side radiator cooling package
- + Transmission oil cooler
- + 5 year / 100,000 mile coolant (some maintenance required)
- + Electronic cruise control w/ high idle
- + Independent front suspension, IFS
- + Ultra steer tag axle

### Construction & Exterior

- + Fiberglass front and rear caps
- + Full body painted exterior
- + Four (4) point fully auto hydraulic leveling system w/ auto air dump
- + Steel basement structure

- + Tru-Brace Anti Camber chassis support system
- + Rust resistant aluminized steel chassis skirts
- + Diamond shield front mask protective film
- + Chrome top-mount remote mirrors w/ heat, turn signal & sideview cameras
- + Frameless dual pane, dark tint windows
- + Automotive foam and Ziebart seal undercoating
- + Carefree power door awning
- + Carefree Latitude dual pitch patio awning w/LED lights & wind sensor
- + Carefree s/o topper w/covers
- + Full height strut assisted compartment doors w/full pass through storage
- + "One Key" system, ext-compartment, entry door & fuel fill doors
- + Quiet integrated A/C intake/ducting roof system
- + Crowned and layered vacuum bonded fiberglass roof
- + Vacuum bonded 3" floor w/ tubular aluminum frame
- + Gel coat vacuum bonded sidewalls, s/o floors & walls
- + Block foam polystyrene insulation in walls, roof and floors
- + 30" Entryway
- + Channeled drains for A/Cs
- + Lighted exterior assist handle
- + 84" interior ceiling height
- + PTL steel entrance door with deadbolt (keyless prep)
- + Auxiliary air chuck (front driverside compartment)

- + LED Marker Lights
- + Full length mud flap w/ chrome "Berkshire" name
- + Slide tray in basement compartment

### Electrical

- + 50A service w/auto transfer switch & 34' power cord reel
- + 10kW Onan diesel generator w/manual slide tray
- + Energy management system
- + Electronic house power disconnect switch
- + Generator start/stop switch (On dash/bedroom)
- + Multi-plex w/Precision plex app control
- + Dimmer control lighting throughout
- + LED lighting package
- + Individual bed LED reading lights in overhead
- + 2000w pure sine inverter/converter
- + Auto generator start control
- + Four (4) Six volt deep cycle house batteries
- + Chassis & house battery bank master shut off switches
- + LED porch & patio lights
- + Solar prep w/mppt controller and roof prep (550w capacity)
- + Automotive chassis fuse panel (front driverside compartment)
- + Ceiling fan in bedroom
- + Kitchen & living room accent lighting

### Plumbing

- + Variable speed 4GPM water pump
- + Individual zoned hot/cold manifold water supply system
- + 4-way water management valve in water bay compartment
- + Bath - solid surface under mount sink
- + Kitchen - Farmhouse stainless steel under mount sink
- + Solid Surface shower walls, glass door,teakwood seat & skylight
- + Whole house water filter
- + Black water tank flush system
- + Kitchen single lever faucet w/ pull-out sprayer
- + Porcelain china bowl toilet w/ foot flush (N/A 45B)
- + Tecma-macerator toilet(rear bath) (45B applicable in 2 bathrooms) (N/A 43B)
- + Clean-easy exterior shower hose
- + Convenience monitor panel in water bay door
- + 360 Roof vent caps



# Berkshire<sup>XLT</sup>

## Interior

- + Polished porcelain tile throughout
- + Hardwood raised panel cabinet doors w/glazing
- + Front bed lift in cockpit
- + Hidden hinges and bar pull style cabinet hardware
- + Living room ceiling crown molding
- + Window valances
- + "Soft Touch" Dream booth dinette w/ storage underneath
- + Villa Ultrafab love seat (N/A 45A)
- + Villa Ultrafab hide-a-bed sofa
- + Polished solid surface kit/bath c-tops & backsplash w/tile inserts
- + Full extension ball bearing metal drawer guides throughout
- + Galley storage compartment for sink covers
- + Kitchen Pantry
- + Pull out kitchen counter top (N/A 43B, 43C)
- + Bi-fold doors, bunk beds (N/A 43C, 45A)
- + "Soft Touch" padded ceiling
- + Roller style day/night shades
- + 72"x 80" Serta king bed w/ bedspread and decorative pillows
- + Bed night stands, w/dual USB jack & overhead cabinetry
- + Mirrored vanity overhead cabinet doors
- + Lighted living room ceiling feature
- + Electronic safe

- + LP gas, carbon monoxide & smoke detectors
- + Fire extinguisher

## Driver/Passenger Cockpit

- + One piece windshield
- + Power front day/night shades
- + Passenger & driver window day/night shades
- + 3D Carbon fiber dash panels
- + Auxiliary fog lights
- + 10" Dash radio w/ color back-up and side view camera pkg w/Navigation
- + Sirius/XM satellite roof mounted antenna
- + Flexsteel soft touch wide driver seat, swivel, recline seat w/6-Way pwr adj.
- + Flexsteel soft touch wide passenger seat, swivel, recline & power foot rest
- + Driver/Passenger side consoles w/cupholders
- + Driver console wireless cellphone charger
- + Lighted step well
- + Two (2) Defroster fans w/ high and low settings
- + Automotive dash AC/heater w/ deluxe controls
- + Multiple auxiliary/USB & 12V charging ports at dash
- + Power flush floor stepwell cover
- + Entry assist handles
- + Driver & Passenger LED ceiling map lights

- + Emergency/aux engine start switch at dash
- + Fitted Cockpit floor mat w/"Berkshire" logo

## Entertainment

- + 49" LED TV, living room (N/A 45A)
- + 43" LED TV, living room (45A only)
- + 43" LED TV exterior TV w/ bluetooth radio & speakers
- + 32" LED TV, bedroom
- + 32" LED TV in cockpit overhead
- + 22" LED TV, (2)each bunk w/ easy access HDMI jack (N/A 43C, 45B)
- + Bose Soundbar w/integrated sub & bluetooth
- + Roof mount Winegard Trav'ler satellite prep
- + Park/cable prep
- + High Definition Cat6 matrix signal distribution
- + Hi-Definition digital TV antenna
- + Blu-ray DVD player

## Appliances

- + 15,000 BTU w/heat pump (Front & Rear), 13,500 BTU (Mid), low pro A/C's
- + Heated holding tank compartment
- + Aqua Hot hydronic heat w/ continuous flow hot water
- + Electric heated tile floors

- + 30" OTR convection microwave oven
- + 23 Cu. Ft. French door residential refrigerator w/ice maker
- + Electric induction glass cook top
- + Power fan in bathroom w/rain cover
- + Maxxair in galley w/wireless remote control w/rain cover
- + Washer/dryer prep
- + Electric fireplace (N/A 43C, 45B)
- + Central vacuum system

## OPTIONS

- + Free standing dinette w/hutch and 4 chairs (N/A 45CA)
- + Theater seating IPO of hide-a-bed sofa
- + Ceramic wood plank tile
- + Second Patio awning (rear passenger slideout) (43B only)
- + Trav'ler (Winegard) satellite antenna- Direct TV (US)
- + Trav'ler (Winegard) satellite antenna- Shaw (Canada)
- + Stackable washer & dryer
- + Stainless steel dishwasher

## Optional Convenience Package

- + Kicker Dash radio tuned amplifier system
- + Keyless entry
- + Auto WiFi extended range antenna
- + 100W solar panel

## FEATURES

- + Cummins L9 Turbo Diesel, 450HP @ 2100RPM, 1250lb/ft Torque @1400RPM
- + Allison 3000MH Transmission, V-Ride Rear Suspension, IFS, Ultra Steer Steerable Tag, 15k Towing
- + Side Radiator, 150 Gal fuel Tank, 15 gal Drivers Side DEF Tank
- + Michelin 315/80R Front Tires, 295/80R Rear Tires/Tag Tires
- + Fiberglass Roof, 3" Vacuum Bonded Floor, 30" Entry w/ True Diesel Motorhome Entry Door
- + Automotive Optiview Digital Dash
- + Smart Steering Wheel w/ Radio, Audio, Wipers, Engine Brake, Cruise Control and Transmission Controls Integrated
- + Full Height, Strut Assisted, Insulated Diesel Motorhome Baggage Doors
- + Individual Water Manifold system w/ point to point plumbing, Water-Mizer Water Saver
- + Rust Resistant Aluminized Chassis Skirts
- + L/R Hydraulic Sides (Applicable Floorplans)
- + Aqua Hot 400D, All Electric Coach, Heated Floor
- + Cockpit Drop Down Bed
- + Precision Circuits Multiplex Wiring w/ Smart Phone App Controls
- + Convenience Monitor Panel in Water Bay Door
- + Upgraded Hardwood Cabinetry Throughout
- + Name Brand Appliances Throughout
- + Convenience Package Option w/ Keyless Entry, WiFi Extender, 100w Solar Panel and Kicker Dash Radio Amplifier
- + (5) Exterior Paint Options Featuring Premium Automotive BASF Paint and 4x Clearcoat
- + (3) Interior Wood Options with (5) Interior Décor Options

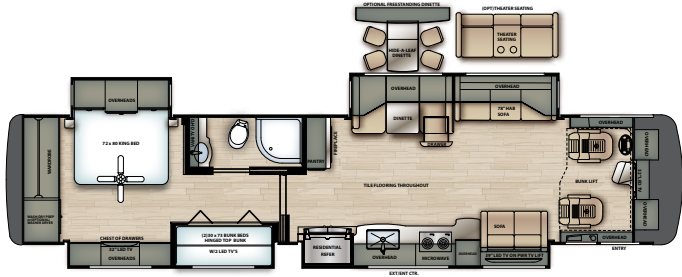


## Features:

**1.** We're taking the RV driving experience into the future with OptiView, the industry's first fully integrated, all-digital LCD instrument cluster. Designed in collaboration with Mercedes-Benz, OptiView is inspired by the current S-Class dash. This user-friendly system features a bright, anti-glare display, touch screen radio and input operation, camera system views and Bluetooth steering wheel controls. **2.** Strategically placed cup holders and wireless phone charging. **3.** Conveniently located cockpit controls. **4.** Standard 10kW Onan diesel generator on manual slide tray. **5.** Electric drop down bunk over cockpit area. **6.** Individual water manifold system with point to point plumbing and exterior shower with hot and cold controls.



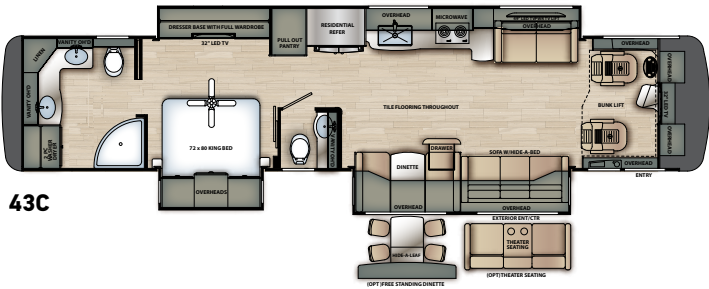
# Floorplans + Specifications



= 9  
 = STD. 8  
 OPT. 10

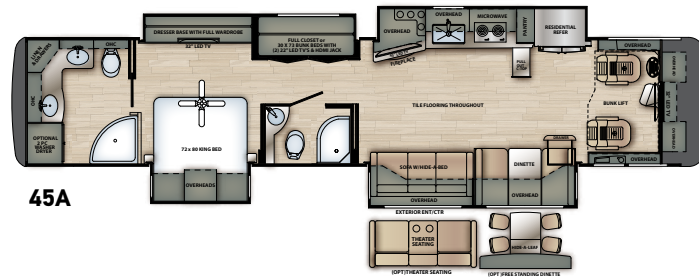
= SEAT BELTS  
 = SLEEPS  
 (STD. /Standard  
 OPT. /with Options)

43B



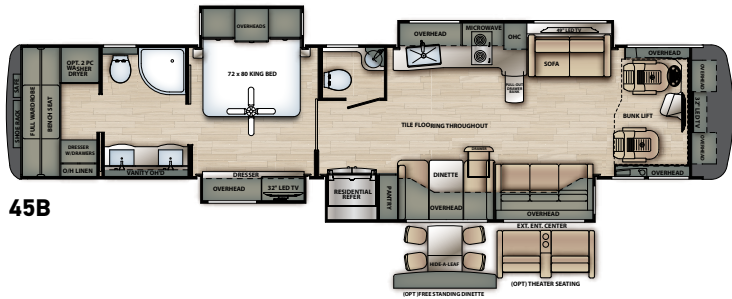
= 9  
 = STD. 6  
 OPT. 8

43C



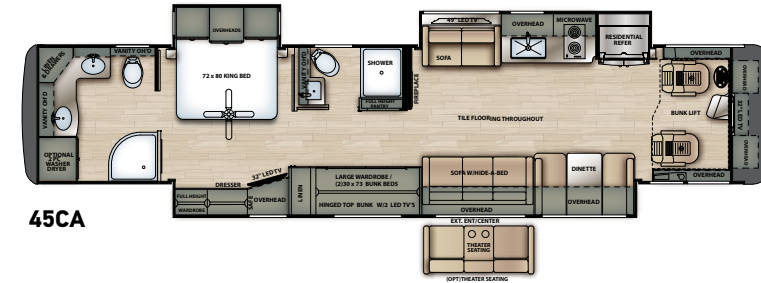
= 7  
 = STD. 7  
 OPT. 9

45A



= 9  
 = STD. 6  
 OPT. 8

45B



= 9  
 = STD. 8  
 OPT. 10

45CA

Floorplan	Length (Feet)	GVWR (Lbs.)	GCWR (Lbs.)	GAWR Front (Lbs.)	GAWR Rear (Lbs.)	GAWR TAG (Lbs.)	Wheelbase (Inches)	Height* (Feet)	Width* (Inches)	Basement storage* (Cu. Ft.)	Awning (Feet)	Fresh Tank* (Gal.)	Gray Tank (Gal.)	Black Tank (Gal.)	LP Tank (Gal.)	Furnace (BTU's)	Hot Water
43B	42' 10"	47,000	62,000	17,000	20,000	10,000	273"	12' 9"	100"	227'	12' 9" (2)	103	66	42	24.5	65,600	Continuous
43C	42' 10"	47,000	62,000	17,000	20,000	10,000	273"	12' 9"	100"	227'	12' 9"	103	66	42	24.5	65,600	Continuous
45A	44' 10"	47,000	62,000	17,000	20,000	10,000	294"	12' 9"	100"	261'	12' 9"	103	66	42	24.5	65,600	Continuous
45B	44' 10"	47,000	62,000	17,000	20,000	10,000	294"	12' 9"	100"	261'	16' 0"	103	66	42	24.5	65,600	Continuous
45CA	44' 10"	47,000	62,000	17,000	20,000	10,000	294"	12' 9"	100"	261'	18' 0"	103	66	42	24.5	65,600	Continuous

\*Fresh water tank includes quick drain valve | Please see back cover for more information regarding weights



XLT

**GVWR (Gross Vehicle Weight Rating)** - is the maximum permissible weight of the unit when fully loaded. It includes all weights, inclusive of all fluids, occupants, cargo, optional equipment and accessories. For safety and product performance do NOT exceed the GVWR.

**GCWR (Gross Combined Weight Rating)** - Is the maximum permissible loaded weight of your motor home and any towed trailer or towed vehicle. Actual GCWR of this vehicle may be limited by the sum of the GVWR and the installed hitch receiver maximum capacity rating; see hitch rating label for detail.

**GAWR (Gross Axle Weight Rating)** - is the maximum permissible weight, including cargo, fluids, optional equipment and accessories that can be safely supported by each axle.

**UVW (Unloaded Vehicle Weight)\*** - is the typical weight of the unit as manufactured at the factory. It includes all weight at the unit's axle(s), including full fuel, all fluids and LP Gas. The UVW does not include cargo, fresh potable water, additional optional equipment or dealer installed accessories.

\*Estimated Average based on standard build optional equipment.

**CCC (Cargo Carrying Capacity)\*\*** - is the amount of weight available for fresh potable water, cargo, passengers, additional optional equipment and accessories. CCC is equal to GVWR minus UVW. Available CCC should accommodate fresh potable water (8.3 lbs per gallon). Before filling the fresh water tank, empty the black and gray tanks to provide for more cargo capacity.

\*\* Estimated average based on standard build optional equipment.

Each Forest River RV is weighed at the manufacturing facility prior to shipping. A label identifying the unloaded vehicle weight of the actual unit and the cargo carrying capacity is applied to every Forest River RV prior to leaving our facilities.

The load capacity of your unit is designated by weight, not by volume, so you cannot necessarily use all available space when loading your unit.

Actual towing capacity is dependent upon your particular loading and towing circumstances, which includes the GVWR, GAWR and GCWR as well as adequate trailer brakes. Please refer to the Operator's Manual of your vehicle for further towing information.

All information contained in this brochure is believed to be accurate at the time of publication. However, during the model year, it may be necessary to make revisions and Forest River, Inc., reserves the right to make all such changes without notice, including prices, colors, materials, equipment and specifications as well as the addition of new models and the discontinuance of models shown in this brochure. Therefore, please consult with your Forest River dealer and confirm the existence of any materials, design or specifications that are material to your purchase decision.



**Learn More**  
Scan this barcode using a QR Reader on your smart phone to learn more about Forest River.



A Berkshire Hathaway company.

Forest River Diesel Division  
1800 W. Hively Ave.  
Elkhart, IN 46517  
(574) 522-3693  
[www.forestriverinc.com](http://www.forestriverinc.com)  
[www.forestriveraccessories.com](http://www.forestriveraccessories.com)



**PRE-DELIVERY INSPECTION FACILITY**

20,000 square feet of quality assurance. The bare essentials for a premium product. This state-of-the-art facility gives immediate daily feedback to production for quality assurance in every unit built.

**24/7 EMERGENCY  
ROADSIDE ASSISTANCE  
WITH VEHICLE PURCHASE\***

---

<p>TOWING JUMP-STARTS TIRE CHANGES FLUID DELIVERY LOCKOUT SERVICE</p>	<p>WINCH-OUT MOBILE MECHANIC TECHNICAL SUPPORT DEALER LOCATOR SERVICES</p>
---	--



\*VALID FOR 1 YEAR FROM DATE OF PURCHASE

**CUSTOMER SATISFACTION**



[www.ForestRiverBuyLocal.com](http://www.ForestRiverBuyLocal.com)

**FREE MEMBERSHIP**  
to Forest River Owners' Group

[www.forestriverfrog.com](http://www.forestriverfrog.com)

