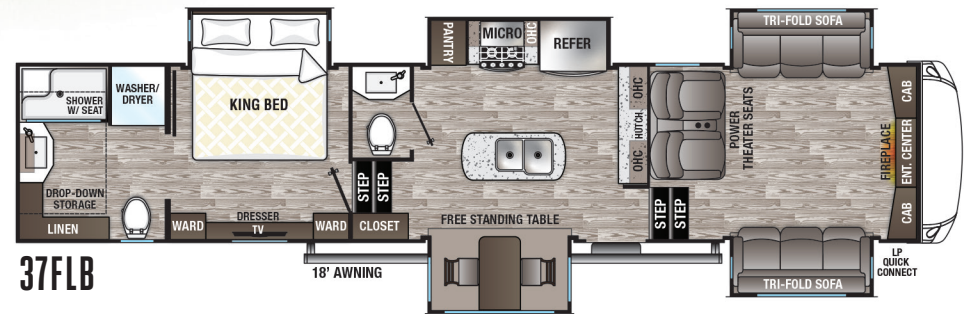
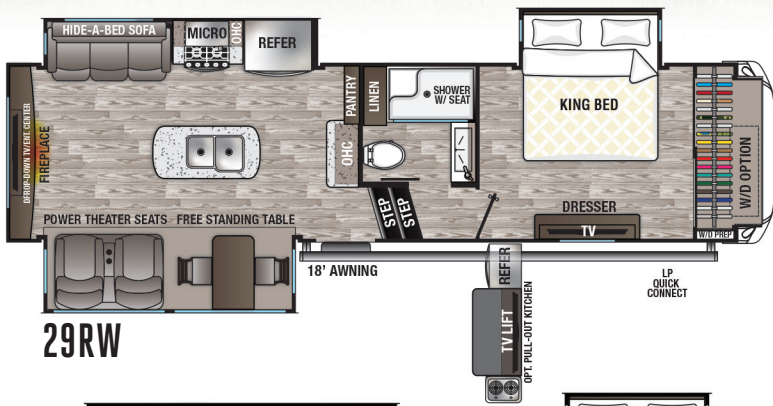




SILVERBACK



THE SMART CHOICE FOR THE EXPERIENCED RV'ER ... WHEREVER THE ROAD LEADS



FEATURES AND OPTIONS

SILVERBACK EDITION PACKAGE

(Mandatory Features)

- "True" gelcoat exterior (the best of the best in exteriors)
- "True" gelcoat front cap
- Cedar Creek's famous all aluminum superstructure on 16" centers or less
- Silaprene® bonded sidewalls – resilient, grows stronger with age. Also has outstanding resistance to UV, heat, cold, moisture, oils, gasoline, highway chemicals and creates a bond that cannot delaminate with time
- Extra wide 32" entry door with a friction hinge and MorRyde® Easy-Steps™
- 50 Amp cord reel
- 12 Gallon DSI/Electric hot water heater with bypass kit
- Solar prep
- LED lighting throughout
- Congoleum floor covering in the living room and bedroom (Mandatory in the BR Slide)
- Shaw carpeting in the dining slide
- Full Pantry in the kitchen areas
- (2) Whisper Quiet, ducted, high capacity air conditioners with dual zone control and cold air returns
- King satellite prep to roof and docking station
- Ceiling fan
- 50" Television with swing arm
- 20 Cu. ft. stainless steel electric refrigerator with icemaker with dedicated inverter
- Black-out night shades
- Power theater seating with USB Ports
- Luxury hide-a-bed sofa
- 36" Fireplace
- Standard 72" x 80" gel foam King bed mattress

EXTERIOR FEATURES

- Exterior graphics design with 5 year warranty
- Hehr® frameless, tinted automotive style windows
- Z-frame with metal wrapped skirting to the frame

- DEXTER® Safety and Performance Package
 - Heavy duty axles with E-Z Lube® hubs
 - Nev-R-Adjust® brakes
 - E-Z Flex™ suspension with greased zerk fittings
 - Bronze bushings for shackles (no plastic)
- 16" E and G special trailer (ST) tires 17.5 on "H"
- 1-1/4" Thick baggage doors with slam latches
- Quick Disconnect exterior LP Gas Connection
- 4' x 6' ABS, ribbed, removable underbelly panels for easy access into the underbelly
- Full, walk-on roof with TPO vinyl roof covering
- Wired for Furrrion® rear camera
- 12V Heating pads on all black, grey and fresh water tanks
- A and E Black electric awning with upgraded fabric and LED night lights
- Full docking station with multi-function tank levers, outside shower, black tank flush, 12V battery disconnect
- Door side, cold water port
- Heated front storage compartment with slam door baggage latches with magnetic catches
- 2" Bike rack receiver
- One year of Saferide™ RV Roadside Assistance
- Free membership to Forest River Owners Group F.R.O.G.



ELECTRONICS

- NEW Cedar Creek Connect Anywhere control center
- 32" Television in the bedroom
- 12V AM/FM/DVD Stereo system with phone app with interior and exterior speakers
- (2) Exterior satellite and cable hook-ups to bedroom and living room
- Pre-wired for satellite to the roof

KITCHEN FEATURES

- European Beech cabinet doors and fascia in kitchen and living room with high sheen glaze
- Full extension drawer glides with self-closing drawers
- Residential, high top, swivel, kitchen faucet with pull-out sprayer
- Stainless steel, 30" over the range microwave

- Insignia, free standing 24" gas range
- Full panel backsplashes where applicable
- Intervac central vacuum system with front storage compartment port
- Free standing table with leaf and (4) chairs (2 Folding/2 stationary with hidden storage)
- Solid surface countertops with stainless steel under-mounted sinks
- Fantastic Create-A-Breeze fan with rain sensor and thermostat

LIVING ROOM

- Larger full view windows (Every window opens for ventilation)
- Congoleum® flooring (Carpet mandatory in dining slide)

BATH FEATURES

- Full 48" x 30" rectangular shower with large seat and sliding glass doors
- New single basin trough sink
- Skylight
- Upgraded shower head
- 18" High porcelain toilet with top circular flush system
- Large 10" blade Create-A-Breeze Fan with wall switch
- Convenient wall switches for fan and lights
- Congoleum® flooring
- Extra storage for linens
- LED night lighting under the vanity

BEDROOM FEATURES

- Black-out night shades
- Congoleum® flooring
- Residential style headboard with luxurious bedding décor
- Redesigned front wardrobe closet with removable cabinets to accommodate a side-by-side washer/dryer
- USB Plug-ins on each side of the bed
- Storage area under the bed
- Prepped for an optional washer and dryer

OPTIONS

- 6-Point hydraulic leveling system
- Trailair air ride hitch
- Dual pane, frameless tinted windows
- Slide-out awning toppers
- Second 12' THULE® power awning on dining slide (N/A 37FLB)
- Heat pump on main air conditioner
- Truma™ On-Demand hot water system
- Full body paint package
- Generator prep
- 5.5 Marquis Gold Onan generator with prep
- Forest River exclusive – 200 watt solar panel
- King, roof-mounted satellite – My Dish RV flexible programming including local channels
- 18 Cu. Ft., stainless steel, gas/electric refrigerator
- 30" Convection/microwave
- Trackless Shaw® carpet in the living room or bedroom
- Booth dinette
- Cedar Creek Outdoor Party Center in front storage compartment
- Upgraded luxury 10" king mattress
- Upgraded luxury 10" queen mattress
- Optional side-by-side washer/dryer
- Cadet wall-mounted heater with circulation fan
- Wireless Rear Observation Camera
- (4) Camera Safety and Security System



The Smart Choice for the Experienced RV'er

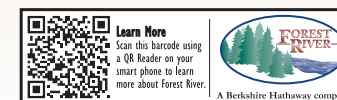
FOREST RIVER INC. CEDAR CREEK DIVISION

501 Hawpatch Road • Topeka, IN 46571

Phone: 260-593-2404

Parts & Service Phone: 260-593-4000

On The Web at: www.forestriverinc.com/cedarcreek



YOUR CEDAR CREEK SILVERBACK DEALER

MODEL	29RW	31IK	33IK	37FLB	37MBH
GVWR	14350 lb.	14435 lb.	14067 lb.	16615 lb.	16135 lb.
Hitch Weight	2350 lb.	2435 lb.	2067 lb.	2615 lb.	2135 lb.
UVW	11414 lb.	11244 lb.	10880 lb.	13564 lb.	12679 lb.
CCC	2936 lb.	3191 lb.	3187 lb.	3051 lb.	3456 lb.
Exterior Length	33' 3"	35' 3"	35' 5"	40' 11"	40' 8"
Exterior Height	13' 5"	13' 5"	13' 5"	13' 5"	13' 5"
Exterior Width	96"	96"	96"	96"	96"
On Demand Fresh Water	69 gal.	69 gal.	69 gal.	69 gal.	69 gal.
Gray Water	80 gal.	80 gal.	80 gal.	80 gal.	80 gal.
Black Water	40 gal.	40 gal.	40 gal.	40 gal.	40 gal.
Awning Size	18 ft.	18 ft.	16 ft.	18 ft.	21 ft.

GVWR (Gross Vehicle Weight Rating) - is the maximum permissible weight of the unit when fully loaded. It includes all weights, inclusive of all fluids, cargo, optional equipment and accessories. For safety and product performance do NOT exceed the GVWR.

GAWR (Gross Axle Weight Rating) - is the maximum permissible weight, including cargo, fluids, optional equipment and accessories that can be safely supported by a combination of all axles.

UVW (Unloaded Vehicle Weight)* - is the typical weight of the unit as manufactured at the factory. It includes all weight at the unit's axle(s) and tongue or pin and LP Gas. The UVW does not include cargo, fresh potable water, additional optional equipment or dealer installed accessories.

*Estimated Average based on standard build optional equipment.

CCC (Cargo Carrying Capacity)** - is the amount of weight available for fresh potable water, cargo, additional optional equipment and accessories. CCC is equal to GVWR minus UVW. Available CCC should accommodate fresh potable water (8.3 lbs per gallon). Before filling the fresh water tank, empty the black and gray tanks to provide for more cargo capacity.

**Estimated average based on standard build optional equipment.

Each Forest River RV is weighed at the manufacturing facility prior to shipping. A label identifying the unloaded vehicle weight of the actual unit and the cargo carrying capacity is applied to every Forest River RV prior to leaving our facilities. The load capacity of your unit is designated by weight, not by volume, so you cannot necessarily use all available space when loading your unit.



All information contained in this brochure is believed to be accurate at the time of publication. However, during the model year, it may be necessary to make revisions and Forest River, Inc., reserves the right to make all such changes without notice, including prices, colors, materials, equipment and specifications as well as the addition of new models and the discontinuance of models shown in this brochure. Therefore, please consult with your Forest River dealer and confirm the existence of any materials, design or specifications that are material to your purchase decision. ©2019 Cedar Creek A division of Forest River, Inc., a Berkshire Hathaway Company. 9/19 Silverback