

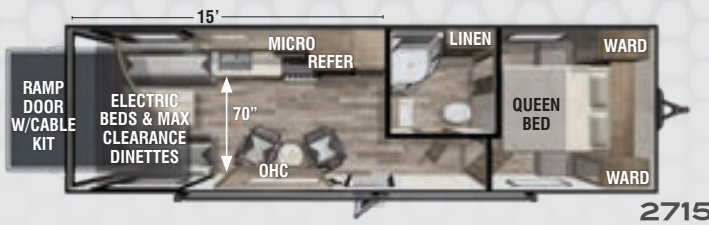
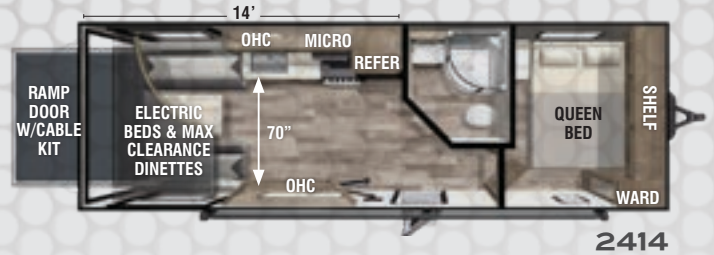
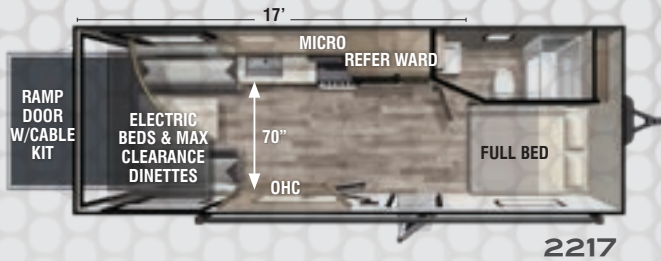
ACTION CAMPING



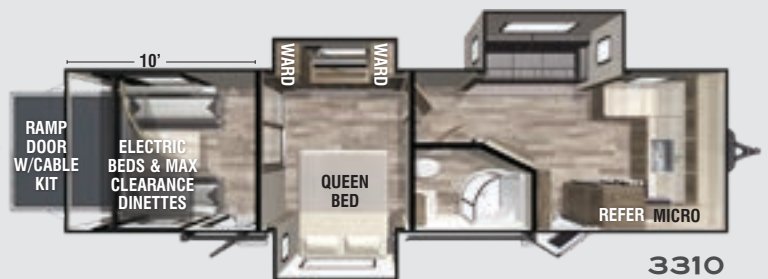
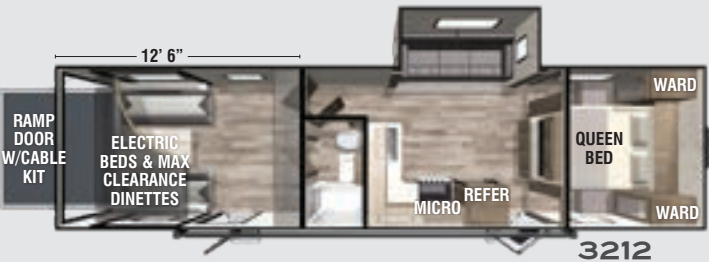
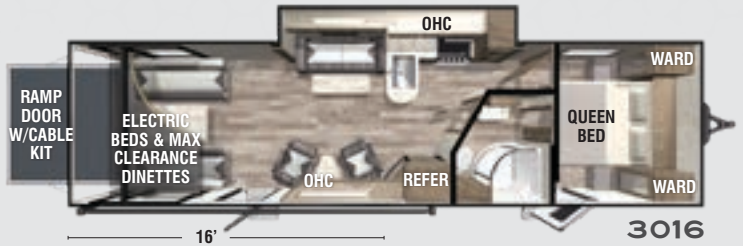
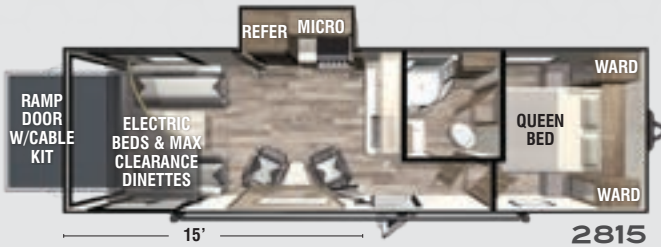
XLR
TOY HAULERS

HYPER LITE

STANDARD MODELS



HD MODELS



HYPER LITE

STANDARD EQUIPMENT

EXTERIOR PACKAGE

Friction Hinge Entry Door(s) w/ Window, Dual 20# LP Tanks w/ Cover, 30AMP Service w/ Transfer Switch, Black Tank Flush, UV Resistant Gel-Coated Fiberglass Exterior, Radius Fully-Walkable Roof, Singular Roof Membrane w/ 12 Year Warranty, Insulated Storage Compartment Doors, Vacuum-Bonded Aluminum-Framed Sidewalls, Laminated & Insulated Slide Room Walls, Fully Enclosed "Body-Armor" Underbelly w/ Radiant Foil Layer, Electric Awning w/ LED Lights, Full-LED Rear Taillights, Alumi-Tread Main Entry Steps

CHASSIS & SUSPENSION PACKAGE

MORRyde CRE3000 Suspension Enhancement, Aluminum Wheels, Dexter EZLube® Axles, Full-Sized Spare Tire, Nev-R-Adjust® Brakes, Radial Tires w/ Nitrofill™

SAFETY PACKAGE

Power Tongue Jack, 12V Battery Disconnect Switch, 80% Tint Radius Safety Glass Windows, LP/CO Detector, Fire Extinguisher, No Excuses Lionshead® Tire Warranty

INTERIOR PACKAGE

17" Oven w/ Cast Iron Three Burner Cooktop, Bathroom Skylight, Lumber Core Cabinet Stiles, Adjustable Hidden Hinge Cabinet Hardware, Full Extension Four-Sided Craftsman Drawers, Radiant Foil Insulation Technology - Ceiling, Floors, Front, Stainless Steel Single Basin Sink, 15,000 BTU Ducted Air Conditioning Distribution System, Grate Style Sink Cover/Drying Rack, Hardwood Cabinet Doors, Gas/Electric Refrigerator, LED Accent Lighting, Metropolitan Grey Countertops, Master Suite w/ Queen Bed, 72" Solid Passage Doors, Master Bedroom Accent Wall, Black Cabinet Hardware, Underbed Storage Shelf, Black Faucets, Congoleum™ Stain-Resistant Vinyl Flooring, Roller Shades in Bedroom & Living Room

HD PACKAGE (N/A 2217, 2414, 2715)

Fiberglass Front Cap w/ Automotive Window, Residential Microwave, Solid Surface Kitchen Countertop, 100 Gallons Fresh Water Tank, 16" Radial Tires, "Quick Clean" Central Vac, Electric Fireplace (N/A 2815), Rubber Garage Flooring (3212 & 3310 only)

MANDATORY

GARAGE PACKAGE

Generator Prep, 20 Gallon Fuel Station, Single Electric Queen Bed w/ Max Clearance Sofa/ Dinette, 5,000# Cargo Tie Downs, Insulated Floor, Black Rear Privacy Screen, Insulated Ramp Door, Black Night Shades, Ramp Patio Cable Kit, Alumi-Tread Rear Entry Steps

TECHNOLOGY PACKAGE

Winegard Air 360 Antenna w/ WiFi & 4G LTE Prep, Backup Camera Prep, Dual Zone Soundbar w/ Built-in Subwoofer, TV and Cable Connections in Bedroom & Garage, Exterior Speakers, Convenient USB Charging Stations, 39" Living Room TV

OPTIONS

OPTIONAL EQUIPMENT

- 4.0 Onan Generator
- VIP Party Deck (Railing Only)
- U-shaped Booth Dinette (3212 & 3310 only)
- Quick Cool Package
- Solar Package
- 12V Heated Holding Tanks

STANDARD MODELS

SPECS	2217	2414	2715	2815	3016	3212	3310
Hitch Weight	955 lb	1,050 lb	940 lb	1,230 lb	TBD	1,485 lb	TBD
UVW	5,993 lb	6,398 lb	6,963 lb	7,718 lb	TBD	8,593 lb	TBD
CCC	3,762 lb	3,452 lb	2,777 lb	3,712 lb	TBD	3,092 lb	TBD
Exterior Length	26' 3"	28'	31' 2"	32' 2"	TBD	36' 1"	TBD
Exterior Height	TBD	TBD	TBD	TBD	TBD	TBD	TBD
Exterior Width	96"	96"	96"	102"	102"	102"	102"
Fresh Water	50 gal	50 gal	50 gal	102 gal	102 gal	102 gal	102 gal
Gray Water	64 gal	64 gal	64 gal	64 gal	64 gal	64 gal	64 gal
Black Water	32 gal	32 gal	32 gal	32 gal	32 gal	32 gal	32 gal
Awning Size	14'	18'	18'	20'	20'	20'	20'

HD MODELS

Actual towing capacity is dependent on your particular loading and towing circumstances, which includes GVWR, GAWR and GCWR, as well as adequate trailer brakes. Please refer to the Owners Manual of your vehicle for further information. All information contained in this brochure is believed to be accurate at the time of publication. However, during the model year, it may be necessary to make revisions and Forest River, Inc., reserves the right to make all such changes without notice, including prices, colors, materials, equipment and specifications as well as the addition of new models and the discontinuance of models shown in this brochure. Therefore, please consult with your Forest River dealer and confirm the existence of any materials, design or specifications that are material to your purchase decision. ©2019 XLR, a Division of Forest River, Inc., a Berkshire Hathaway company. All Rights Reserved. 9/19



ACTION CAMPING

2421 Century Drive / Goshen, IN 46528
Phone: 574-642-0438
E-mail: XLRinfo@forestriverinc.com

