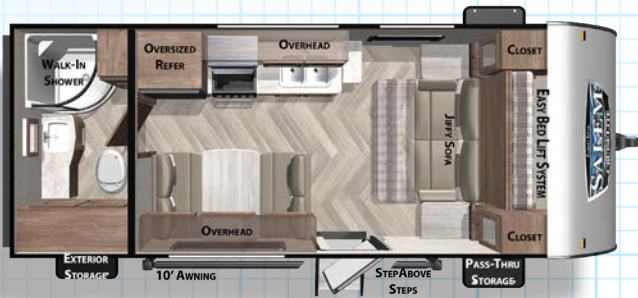
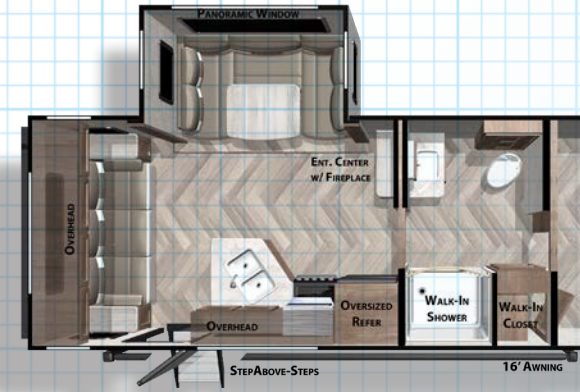




171RBXL



19DBXL



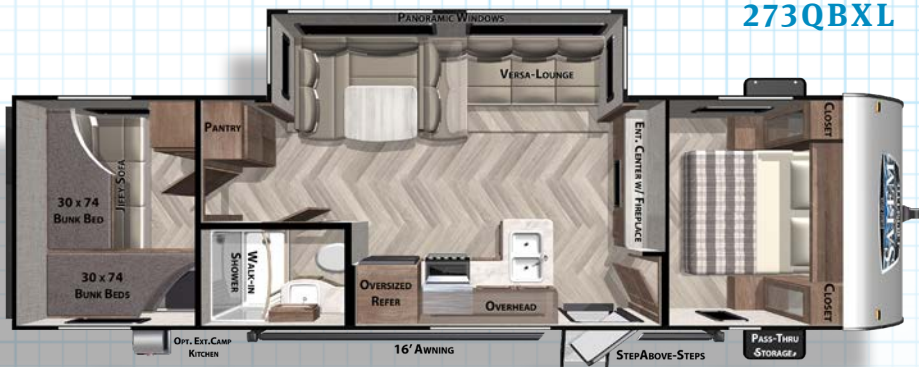
241QBXL



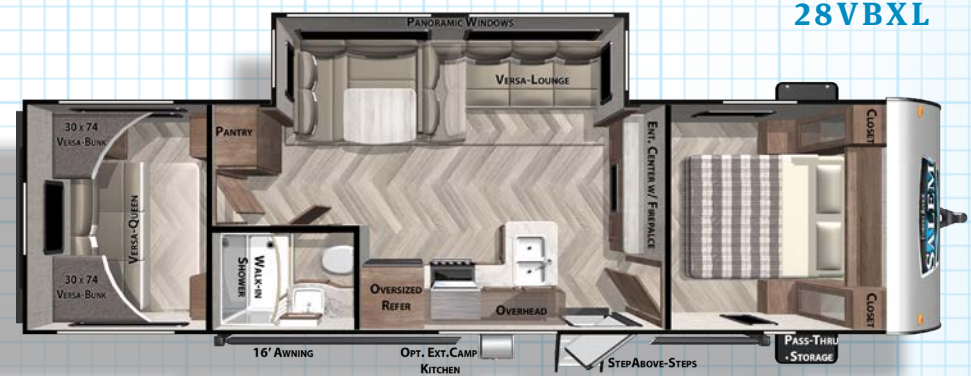
261BHXL



273QBXL

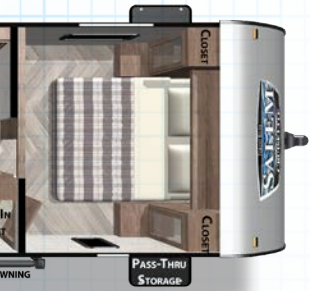


28VBXL





24RLXL



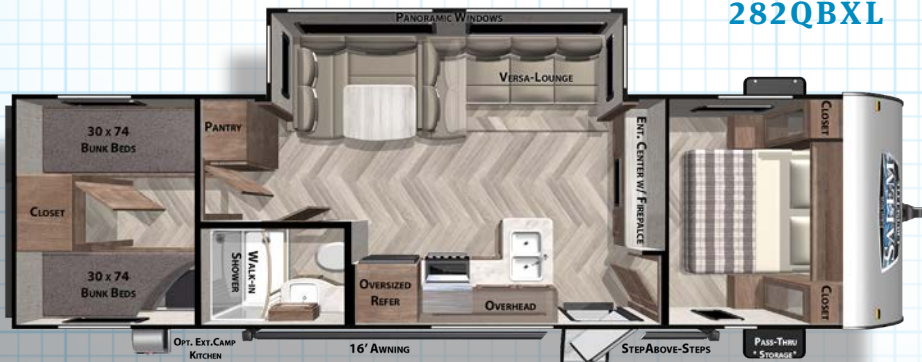
240BHXL



263BHXL



282QBXL



## BEST IN CLASS PACKAGE

- » Upgraded Designer Furniture Package
- » 20.3 CU FT of Stow N Go Storage (Non-Slide Models 10.4 CU FT)
- » Versa Lounge (Select Models)
- » MORryde™ StepAbove Double Step (Main Door Only)
- » Exterior LED Light Strip Under Awning
- » Modern Cloth Roller Shades w/ AutoStop
- » Green PKG: Furion Solar Prep & LED Mushroom Lights
- » Power Awning w/ Adjustable Legs
- » True Stabilizer Jacks w/ JT StrongArms
- » Power Tongue Jack w/ LED Light
- » Stainless Steel Roll Up Sink Cover
- » Ext. Convenience PKG: Friction Hinge & Baggage Door Magnets
- » Furion Backup Camera Prep
- » Large Capacity 11 CU FT Frost-Free Refrigerator (12-volt)
- » Slide-Out Awning Prep
- » Black Tank Flush
- » Seamless Countertops (No T-mold)
- » Designated CPAP Storage



28VBXL

	171RBXL	190BXL	240BHXL	24RLXL	241QBXL	261BHXL	263BHXL	273QBXL	28VBXL	282QBXL
HITCH WEIGHT:	521 lb.	520 lb.	570 lb.	550 lb.	499 lb.	450 lb.	682 lb.	752 lb.	790 lb.	636 lb.
UVW:	3836 lb.	4483 lb.	5343 lb.	5063 lb.	4173 lb.	4818 lb.	5854 lb.	6028 lb.	6208 lb.	6193 lb.
CCC:	3685 lb.	3037 lb.	2227 lb.	2487 lb.	3326 lb.	2632 lb.	1828 lb.	1724 lb.	1582 lb.	1443 lb.
EXTERIOR LENGTH:	22' 8"	24' 8"	28'10"	28' 11"	26' 7"	28'8"	31' 9"	33' 5"	33' 2"	33' 2"
EXTERIOR HEIGHT:	10' 1"	10' 1"	10'4"	10' 5"	10' 1"	10' 1"	10' 4"	10' 4"	10' 4"	10' 4"
EXTERIOR WIDTH:	96"	96"	96"	96"	96"	96"	96"	96"	96"	96"
FRESH WATER:	40 gal.	40 gal.	40 gal.	40 gal.	40 gal.	40 gal.	40 gal.	40 gal.	40 gal.	40 gal.
GRAY WATER:	30 gal.	28 gal.	60 gal.	30 gal.	40 gal.	28 gal.	60 gal.	30 gal.	28 gal.	28 gal.
BLACK WATER:	30 gal.	30 gal.	30 gal.	40 gal.	30 gal.	30 gal.	30 gal.	28 gal.	28 gal.	28 gal.
AWNING SIZE:	10'	12'	18'	16'	14'	18'	15'	16'	16'	16'

# SALEM PRODUCT FAMILY



FSX

CRUISE LITE

SALEM

VILLA / GRAND VILLA

HEMISPHERE



## 24/7 EMERGENCY ROADSIDE ASSISTANCE WITH VEHICLE PURCHASE\*

TOWING  
JUMP-STARTS  
TIRE CHANGES  
FLUID DELIVERY  
LOCKOUT  
SERVICE

WINCH-OUT  
MOBILE MECHANIC  
TECHNICAL  
SUPPORT  
DEALER LOCATOR  
SERVICES



\*VALID FOR 1 YEAR FROM DATE OF PURCHASE

## FREE MEMBERSHIP to Forest River Owners' Group

[www.forestriverfrog.com](http://www.forestriverfrog.com)



### Learn More

Scan this barcode using  
a QR Reader on your  
smart phone to learn  
more about Forest River.



A Berkshire Hathaway company.

## Specification Definitions

**GVWR (Gross Vehicle Weight Rating)** - is the maximum permissible weight of the unit when fully loaded. It includes all weights, inclusive of all fluids, cargo, optional equipment and accessories. For safety and product performance do NOT exceed the GVWR.

**GAWR (Gross Axle Weight Rating)** - is the maximum permissible weight, including cargo, fluids, optional equipment and accessories that can be safely supported by a combination of all axles.

**UVW (Unloaded Vehicle Weight)\*** - is the typical weight of the unit as manufactured at the factory. It includes all weight at the unit's axle(s) and tongue or pin and LP Gas. The UVW does not include cargo, fresh potable water, additional optional equipment or dealer installed accessories.

\*Estimated average based on standard build optional equipment.

**CCC (Cargo Carrying Capacity)\*\*** - is the amount of weight available for fresh potable water, cargo, additional optional equipment and accessories. CCC is equal to GVWR minus UVW. Available CCC should accommodate fresh potable water (8.3 lbs per gallon). Before filling the fresh water tank, empty the black and gray tanks to provide for more cargo capacity.

\*\* Estimated average based on standard build optional equipment

Each Forest River RV is weighed at the manufacturing facility prior to shipping. A label identifying the unloaded vehicle weight of the actual unit and the cargo carrying capacity is applied to every Forest River RV prior to leaving our facilities.

The load capacity of your unit is designated by weight, not by volume, so you cannot necessarily use all available space when loading your unit.

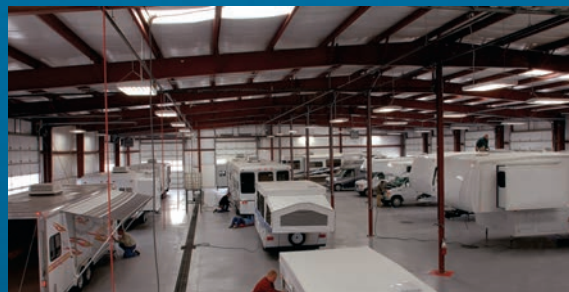
All information contained in this brochure is believed to be accurate at the time of publication. However, during the model year, it may be necessary to make revisions and Forest River, Inc., reserves the right to make all such changes without notice, including prices, colors, materials, equipment and specifications as well as the addition of new models and the discontinuance of models shown in this brochure. Therefore, please consult with your Forest River dealer and confirm the existence of any materials, design or specifications that are material to your purchase decision. Litho. U.S.A. FOR 1609 P/W: 2019.01.22

## MEET YOUR CRUISE LITE DEALER

## CUSTOMER SATISFACTION



[www.ForestRiverBuyLocal.com](http://www.ForestRiverBuyLocal.com)



## PRE-DELIVERY INSPECTION FACILITY

20,000 square feet of quality assurance. The bare essentials for a premium product. This state-of-the-art facility gives immediate daily feedback to production for quality assurance in every unit built.