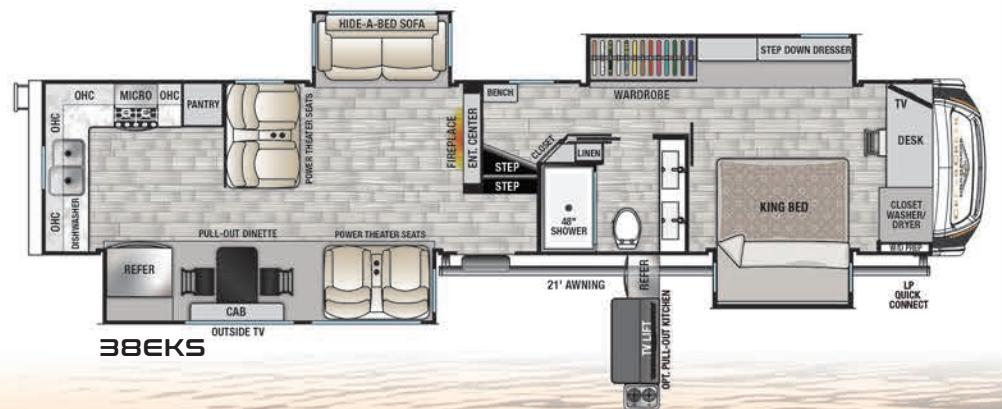
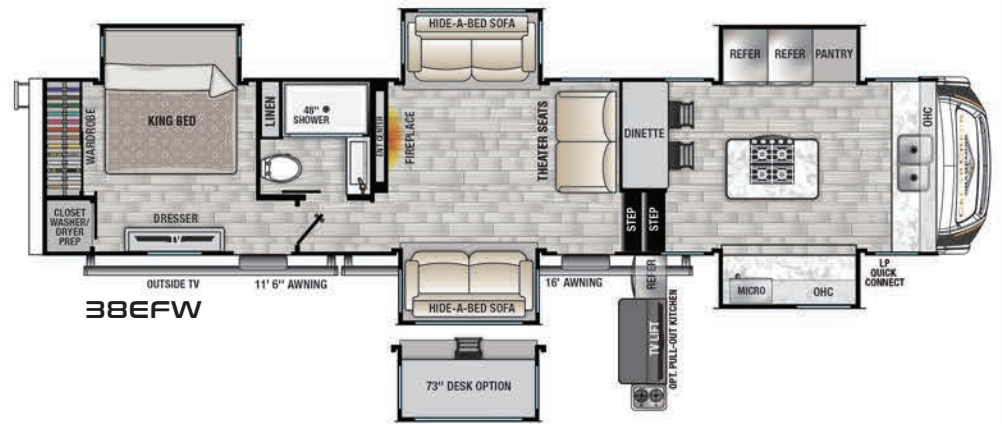
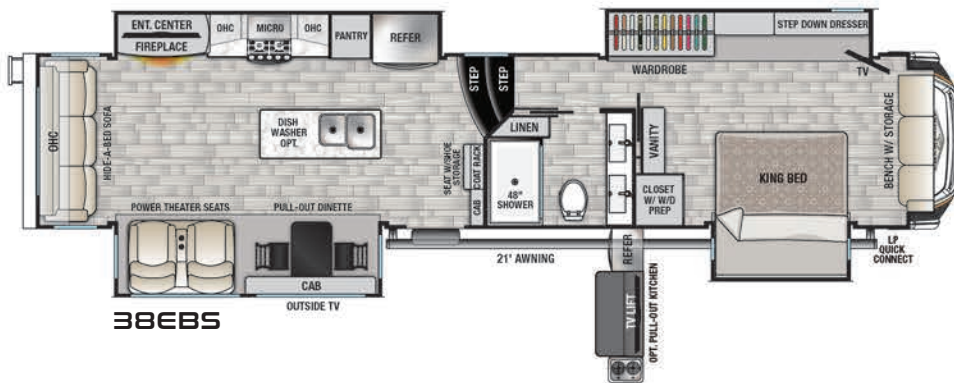




# CEDAR CREEK

## CHAMPAGNE

THE SMART CHOICE FOR  
THE EXPERIENCED RV'ER





- Intra-Vac Central Vacuum System with Front Storage Port
- (2) Whisper Quiet, Ducted, Air Conditioners with Dual Zone Control and Cold Air Returns
- Extra Wide, 32" Entry Door
- Congoleum® Vinyl Flooring in Living Room and Bedroom
- 55" 4K, TV in the Living Room with Swing Arm
- Washer/Dryer Prep with a New Front Closet Redesign for a Side-by-side Washer/Dryer Option
- Cadet® Heater with Fan in the Bedroom
- Truma On-demand Hot Water Heater
- Keyless Entry System
- Power Theater Seating
- USB Ports in Kitchen and Bedroom
- King WiFi Router/Range Extender
- Solar Prep
- (2) Variable Speed Power Fans with Rain Sensor Override
- Washer/Dryer Prep
- Total Unit Control with Vegatouch® Panel and Firefly Dimmer Switches that Include Wireless Connectivity to Your Phone
- Slam Latch Baggage Doors
- Prep for Rear Observation Camera

## STANDARD FEATURES

### EXTERIOR

- DEXTER® Safety and Performance Package
  - Nev-R-Adjust® Brakes are Always Properly Adjusted for Improved Stopping Power in Half the Distance
  - E-Z Lube®, Heavy Duty Axles
- 17.5" "H" Rated Tires on 8,000 lb. Dexter® Axles
- Trailair Road Warrior Suspension with Wet Bolts and Bronze Bushings
- 21,000 Lb. Rhino Hitch
- Electric Awnings with LED Night Lighting
- 50 Amp Service
- 65 Amp Power Converter



MODEL	38EBS	38EFW	38EL	38EKS
GVWR	18,790 lb.	TBD	18,000 lb.	18,510 lb.
Hitch Weight	2,790 lb.	TBD	2,710 lb.	2,510 lb.
UVW	14,364 lb.	TBD	14,429 lb.	14,724 lb.
CCC	4,426 lb.	TBD	3,571 lb.	3,206 lb.
Exterior Length	43' 1"	TBD	42' 2"	43' 1"
Exterior Height	13' 5"	13' 5"	13' 5"	13' 5"
Exterior Width	96"	96"	96"	96"
On-Demand Fresh Water*	57 gal.	57 gal.	57 gal.	57 gal.
Gray Water	82 gal.	82 gal.	80 gal.	82 gal.
Black Water	41 gal.	41 gal.	41 gal.	41 gal.
Awning Size	21 ft.	21 ft.	21 ft.	21 ft.

\*On-Demand, Tankless Water Heater

- Rear Ladder
- Exterior Compartment with 32" TV
- Doorside, Cold Water Port
- 8000# Axles with 17.5, "H" Rated Tires
- Power Cord Reel
- Go Power® Solar Panel with Battery

### INTERIOR

- Central Docking Station
- Satellite and Cable Hook-ups Located in Docking Station Wired into the Living Room and Bedroom
- Flip-top Dresser Storage
- Illuminated Ceiling Fan
- Valances
- Shaw® R2X Stain and Soil Resistant Carpeting in Living Room Slide
- Crown Molding Complimenting all Overhead Cabinets
- 48" Shower with Upgraded Shower Head and Triple Sliding Glass Doors
- 12V Battery Disconnect
- Walk-in Front Closet
- Mixed Tone, High Sheen Cabinet Doors and Drawers with Hidden Hinges
- Stainless Steel 30" Microwave Oven
- Pantry with Full Extension Drawer Guides
- Dining Table with (4) Chairs (2 Folding, 2 Non-folding with Leaf Extension)
- New Bathroom Redesign
- 36" Fireplace with Thermostat
- Champagne LED Lighting Package
- 32" TV in the Bedroom
- Designer Kitchen Backsplash

### SAFETY & SUPPORT

- Carbon Monoxide Detector
- LP Gas Detector
- Smoke Detector
- One Year of SafeRide RV Roadside Assistance
- Membership to the Forest River Owner's Group (F.R.O.G.)

GVWR (Gross Vehicle Weight Rating) - is the maximum permissible weight of the unit when fully loaded. It includes all weights, inclusive of all fluids, cargo, optional equipment and accessories. For safety and product performance do NOT exceed the GVWR.

GAWR (Gross Axle Weight Rating) - is the maximum permissible weight, including cargo, fluids, optional equipment and accessories that can be safely supported by a combination of all axles.

UVW (Unloaded Vehicle Weight) - is the typical weight of the unit as manufactured at the factory. It includes all weight at the unit's axle(s) and tongue or pin and LP Gas. The UVW does not include cargo, fresh potable water, additional optional equipment or dealer installed accessories.

\*Estimated Average based on standard build optional equipment.  
CCC (Cargo Carrying Capacity)\*\* - is the amount of weight available for fresh potable water, cargo, additional optional equipment and accessories. CCC is equal to GVWR minus UVW. Available CCC should accommodate fresh potable water (8.3 lbs per gallon). Before filling the fresh water tank, empty the black and gray tanks to provide for more cargo capacity.

\*\*Estimated average based on standard build optional equipment.

Each Forest River RV is weighed at the manufacturing facility prior to shipping. A label identifying the unloaded vehicle weight of the actual unit and the cargo carrying capacity is applied to every Forest River RV prior to leaving our facilities. The load capacity of your unit is designated by weight, not by volume, so you cannot necessarily use all available space when loading your unit.

## OPTIONS

### EXTERIOR OPTIONS

- Full Body Paint Package
- Thule Slide Room, Power Awning (N/A 38ERD)
- LP Generator Prep Only
- 5.5 Onan Marquis Gold LP Generator with Generator Prep
- Whisper Quiet Third A/C with Power Management System
- Heat Pump on Main Air Conditioner
- Slide Room Awning Toppers
- Cedar Creek Party Center

### INTERIOR OPTIONS

- Shaw Carpeting in the Living Room with Rebond
- Shaw Carpeting in the Bedroom with Rebond (N/A 38EKS)
- Splendide Front Loading, Washer and Dryer
- 18 Cu. Ft. Gas/Electric Stainless Steel Refrigerator
- Fisher & Paykel Dishdrawer™, Stainless Steel Dishwasher in Island
- 30" Stainless Steel Convection Oven/Microwave
- 110V Bedroom Refrigerator in Front Closet

### FURNITURE OPTIONS

- Luxury Queen Mattress IPO King

### MISCELLANEOUS OPTIONS

- King Dish Satellite System with (2) Receivers and (3) Viewing Areas
- 21,000 Lb. Trailair Air Ride Hitch Coupler
- Wireless Rear Camera Observation System
- (4) Camera Safety and Security System
- 12 Gallon Gas/Electric Hot Water Heater

# CEDAR CREEK

CHAMPAGNE

THE SMART CHOICE FOR THE EXPERIENCED RVER

FOREST RIVER INC. CEDAR CREEK DIVISION

501 Hawpatch Road • Topeka, IN 46571

Phone: 260-593-2404

Parts & Service Phone: 260-593-4000

On The Web at: [www.forestriverinc.com/cedarcreek](http://www.forestriverinc.com/cedarcreek)

YOUR CEDAR CREEK CHAMPAGNE DEALER

## CHAMPAGNE ADVANTAGE PACKAGE

### (Mandatory Features)

- "True" High Gloss Gelcoat Exterior
- Cedar Creek's All Aluminum Superstructure
- Automatic 6-point Hydraulic Leveling System
- 2" Bike Hitch Receiver
- Solid Surface Countertops
- Molded, Motorhome Style Rear Fiberglass Cap
- 20 Cu. Ft. Stainless Steel Electric Refrigerator with Ice Maker and Dedicated 1000W Inverter
- Quick Disconnect, Exterior, LP Gas Connection
- Heated Front Storage Compartment
- Deluxe Hide-a-Bed Sofa
- Dual Pane Windows
- Upgraded Luxury King Mattress
- 24" Freestanding Gas Range
- TST Tire Pressure Monitor System
- Pet Leash Latch

## CHAMPAGNE CONVENIENCE PACKAGE

- "True" Gelcoat, Painted Front Cap
- Sliding, Battery Trays
- MORryde®, 5 Tier, "Step Above" Entry Stairs



Find us on Facebook

All information contained in this brochure is believed to be accurate at the time of publication. However, during the model year, it may be necessary to make revisions and Forest River, Inc., reserves the right to make all such changes without notice, including prices, colors, materials, equipment and specifications as well as the addition of new models and the discontinuance of models shown in this brochure. Therefore, please consult with your Forest River dealer and confirm the existence of any materials, design or specifications that are material to your purchase decision. ©2021 Cedar Creek. A division of Forest River, Inc., a Berkshire Hathaway Company. 8/21

